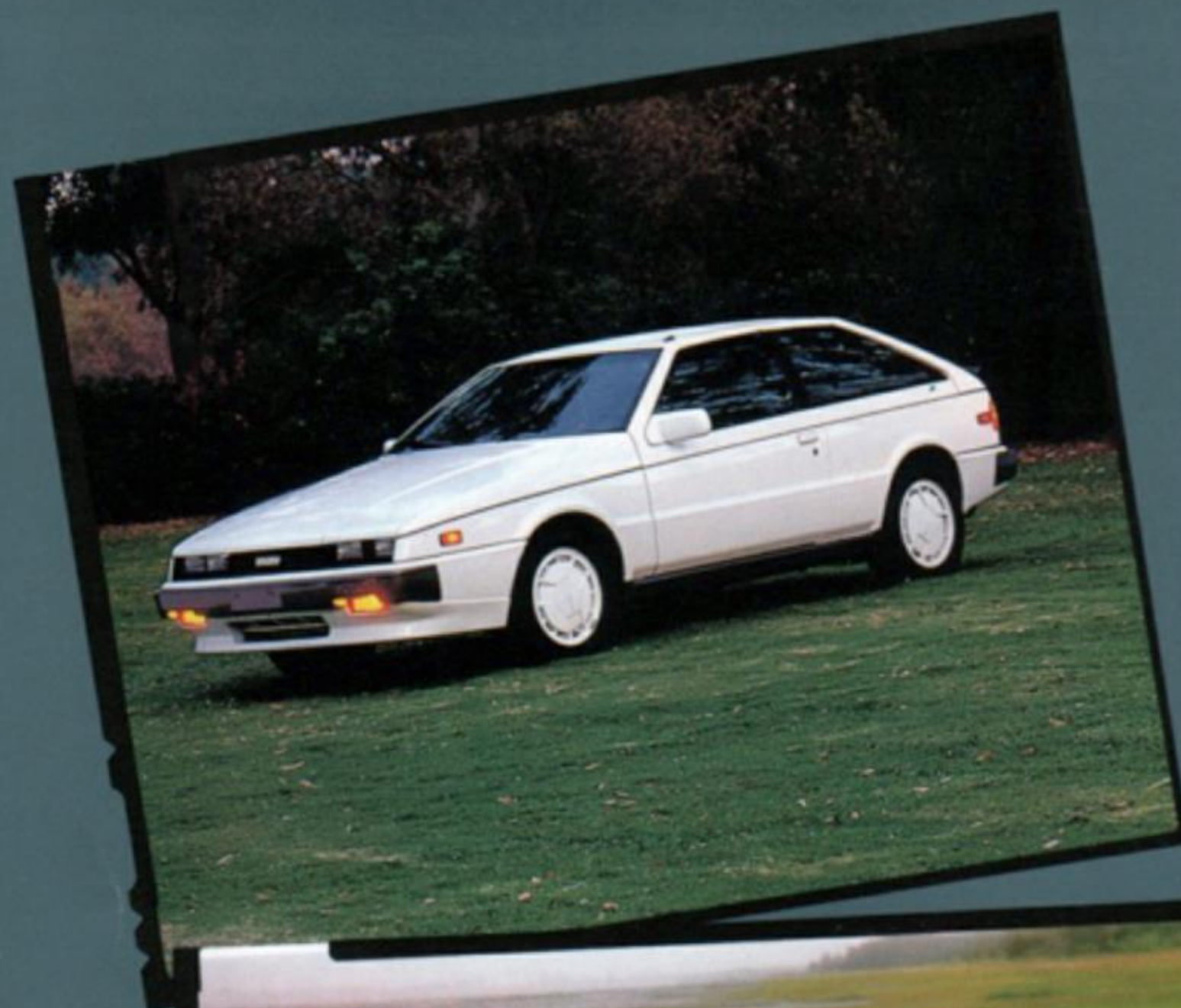


# *Pictures of Performance*

THE FAMILY OF ISUZU CARS AND TRUCKS



# ISUZU





## P<sup>ower</sup>-city express

Get a whole new slant on sports car performance, courtesy of the 1987 Isuzu RS Turbo Impulse. It's sexy; it's daring. It's turbo-charged, intercooled and fuel-injected. Nothing in its class can touch it. A 2-liter SOHC power plant delivers 140 horsepower, rocketing you from 0 to 50 mph in just over 5 seconds. A crisp 5-speed manual transmission, limited-slip differential and specially-tuned suspension help you savor those hairpin turns and endless straightaways.

Every Impulse is a power trip—Impulse, Impulse Turbo and the all-new RS Turbo. Each features an amazing mix of standard equipment and options to make your cockpit a custom fit and your ride an unforgettable experience. What's more, if you have music on your mind, Impulse plays it perfectly with an optional AM/FM E/T stereo cassette system, power booster and 7-band graphic equalizer. Impulse lets you blow doors off, inside and out.

Impulse...it's radical!



## E<sup>cono</sup>zoned

The 1987 Isuzu I-Mark is zoned for economy while setting new standards for value, reliability and performance. Its peppy 1.5-liter engine features many of the same design characteristics of yesteryear's muscle cars—hemisphere heads, high-swirl ports and overhead cam. Yet the computer-controlled carburetion sips just enough gas to give you an EPA estimated 40 mpg on the highway and 34 mpg overall. Acceleration is a breeze with I-Mark taking you from 0 to 50 in just over 8 seconds (based on independent test results). Other performance features include rack and pinion steering, front power-assisted disc brakes, aluminum alloy wheels and road-hugging steel-belted radial tires. Every I-Mark comes with space-saving front wheel drive.

The best part of I-Mark is its value. Affordably priced, it's the smart choice for students, the sensible choice for singles and young families and the right choice for sure.



## O<sup>pen</sup> door policy

Getting into the 1987 Isuzu Trooper II is easier than you may expect. Six doors provide a myriad of access combinations, storage retrieval and all-around passenger convenience. Trooper II is built with utility in mind and 79 cubic feet of interior cargo space proves it. A 2-door Trooper II is also available.

Trooper II is an urban masterpiece, just right for scaling parking structures and shopping malls. Appearances can be deceiving, though. Under the hood lies a snarling 2.3-liter gas engine. A 2.2-liter turbo diesel is optional (not available in California). A 5-speed manual transmission, heavy-duty independent front suspension and three undercarriage skid plates are set to transform your urban masterpiece into an off-road wasteland warrior. Choose 4-wheel drive or 2-wheel drive.

Trooper II puts it together for you—hard-edged performance and civil comforts.



## H<sup>aulin'</sup> machine

It's fast; it's functional. It's the 1987 Isuzu PUP. Pick a bed from a spread of 17 different standard beds, long beds and short beds, all pumped up with the widest assortment ever of standard equipment and road-taming options. Choose either everyday 2-wheel drive or work-day 4-wheel drive. Choose the power plant for the energy you need: the high performance 2.3-liter overhead cam gas engine, the money-saving 1.9-liter gas engine, the fleet-fit 2.2-liter diesel or the husky 2.2-liter turbo diesel (not available in California).

If you need a bed with room for passengers, the PUP Spacecab is the ticket. Pile in passengers and over 37 cubic feet of cargo. Plus, an optional AM/FM ETR cassette stereo system and other goodies will help you brave the elements without missing a beat.

An optional Value Package makes PUP a good looker. Available in six colors, the package includes bright front bumper and grille, black body side moulding with red insert, double wall cargo panels, white spoke wheels and more.

When you need a haulin' machine that's primed for action, choose PUP.





# SPECIFICATIONS

## IMPULSE

IMPULSE	IMPULSE		TURBO IMPULSE	
	MAN.	AUTO.	MAN.	AUTO.
<b>EXTERIOR DIMENSIONS — in.</b>				
Wheelbase	96.1 in.			
Overall length	172.6 in.			
Overall width	65.2 in.			
Overall height	51.4 in.			
<b>INTERIOR DIMENSIONS — in.</b>				
Head room — front	36.9 in.			
— rear	35.8 in.			
Leg room — front	41.9 in.			
— rear	28.1 in.			
<b>WEIGHTS/CAPACITIES</b>				
Curb weight (lbs.)	2727	2749	2895 (RS)	2923
Fuel tank (gal.)	15.1			
<b>ENGINES AVAILABLE</b>				
Type	Gas in-line, 4-cyl, 4-cycle, water-cooled SOHC		Turbocharged gas in-line, 4-cyl, 4-cycle, water-cooled SOHC	
Displacement	1949cc		1994cc	
Net Horsepower (SAE)	90bhp@5000rpm		140bhp@5400rpm	
<b>TRANSMISSIONS AVAILABLE</b>				
Type	5-speed manual overdrive 4-speed automatic overdrive (Turbo w/lock-up clutch)			

## I-MARK

I-MARK			
	3-Door		4-Door
<b>EXTERIOR DIMENSIONS—in.</b>			
Wheelbase	94.5 in.		94.5 in.
Overall length	157.4 in.		160.2 in.
Overall width	63.5 in.		63.5 in.
Overall height	54.1 in.		54.1 in.
<b>INTERIOR DIMENSIONS—in.</b>			
Head room — front	38.0 in.		37.7 in.
— rear	37.1 in.		37.6 in.
Leg room — front	41.7 in.		41.7 in.
— rear	33.3 in.		33.5 in.
<b>WEIGHTS/CAPACITIES</b>			
Curb weight (lbs.)			
5-speed manual	1923		1937
3-speed automatic	1944		1960
Fuel tank (gal.)	11.1		11.1
<b>ENGINES AVAILABLE</b>			
Type	I-MARK "S"	I-MARK	I-MARK TURBO
Displacement	Gas SOHC 4-cyl in-line 1471cc	4-cyl trans- verse 1471cc	4-cyl transverse (fuel injected) 1471cc
Net Horsepower (SAE)	70s-e@5400rpm	70s-e@5400rpm	110s-e@5400rpm
<b>TRANSMISSIONS AVAILABLE</b>			
Type	5-speed manual 3-speed automatic		

## PUP

POP

	STANDARD BED	LONG BED	SPACECAB
<b>EXTERIOR DIMENSIONS—in.</b>			
Wheelbase	104.3 in.	117.9 in.	117.9 in.
Overall length	174.4 in.	191.5 in.	191.5 in.
Overall width — 2WD	63.0 in.	63.0 in.	63.0 in.
4WD	63.2 in.	63.2 in.	63.2 in.
Overall height — 2WD	59.3 in.	59.8 in.	63.0 in.
4WD	61.0 in.	61.6 in.	64.8 in.
<b>GROUND CLEARANCE—in.min.</b>		7.5 in.	
<b>PICKUP BOX—in.</b>			
Inside length	73.0 in.	90.2 in.	73.6 in.
Inside width	55.7 in.	55.7 in.	55.7 in.
Inside height	15.7 in.	15.7 in.	15.7 in.
Width @ wheelhouse	39.1 in.	39.1 in.	39.1 in.
<b>FUEL TANK CAPACITY (gal.)</b>		13.2	19.1
<b>ENGINES AVAILABLE</b>		Gas in-line, water-cooled, 4-cyl SOHC	Diesel in-line, water-cooled, 4-cyl OHV
Type			
Displacement	1949cc/2254cc	2238cc	
Net Horsepower (SAE)	82hp@4600rpm	62hp@4300rpm (60CAL)	
	96hp@4600rpm	80hp@4000rpm (T/D)	
<b>TRANSMISSIONS AVAILABLE</b> (depends on model)		4-speed manual	
Type		5-speed manual	
		3-speed automatic	

## TROOPER II

	DLX	LS
<b>EXTERIOR DIMENSIONS—in.</b>	2-DR/4-DR	
Wheelbase	104.3 in.	
Overall length	175.2 in.	
Overall width	65.0 in.	
Overall height	71.7 in.	
<b>INTERIOR DIMENSIONS—in.</b>	2-DR/4-DR	
	Front Seat	w/optional Rear Seat
Head room	40.2 in.	39.4 in.
Leg room	39.9 in.	36.1 in.
<b>GROUND CLEARANCE—in.min.</b>	8.3 in.	
<b>WEIGHTS/CAPACITIES</b>	2.3L Gas	2.2L Turbo Diesel
Gross payload-gas (lbs.)	1374	1319
Gross payload-turbo diesel (lbs.)	1193	1136
Fuel tank (gal.)	21.9	
<b>ENGINES AVAILABLE</b>	Gas in-line, water-cooled, 4-cyl, 4-cycle SOHC 2254cc 96hp@4600rpm	Turbo diesel in-line, water-cooled, 4-cyl, 4-cycle OHV* 2238cc 80hp@4000rpm
<b>TRANSMISSION AVAILABLE</b>	5-speed manual	

\*Not available in California.

A 24-month/24,000-mile powertrain limited warranty accompanies Isuzu's standard 12-month/12,000-mile limited warranty from date of purchase. Also a 36-month rust perforation limited warranty (no mileage limit). See Dealer for details.

Technical data and equipment shown in this brochure are based upon the latest available information at the time of publication. American Isuzu Motors Inc. reserves the right to make changes at any time, without notice, in prices, colors, materials, equipment specifications and models. Some vehicles are shown with optional equipment.

## See the family of quality-built Isuzu vehicles at:



The First Car Builders of Japan.