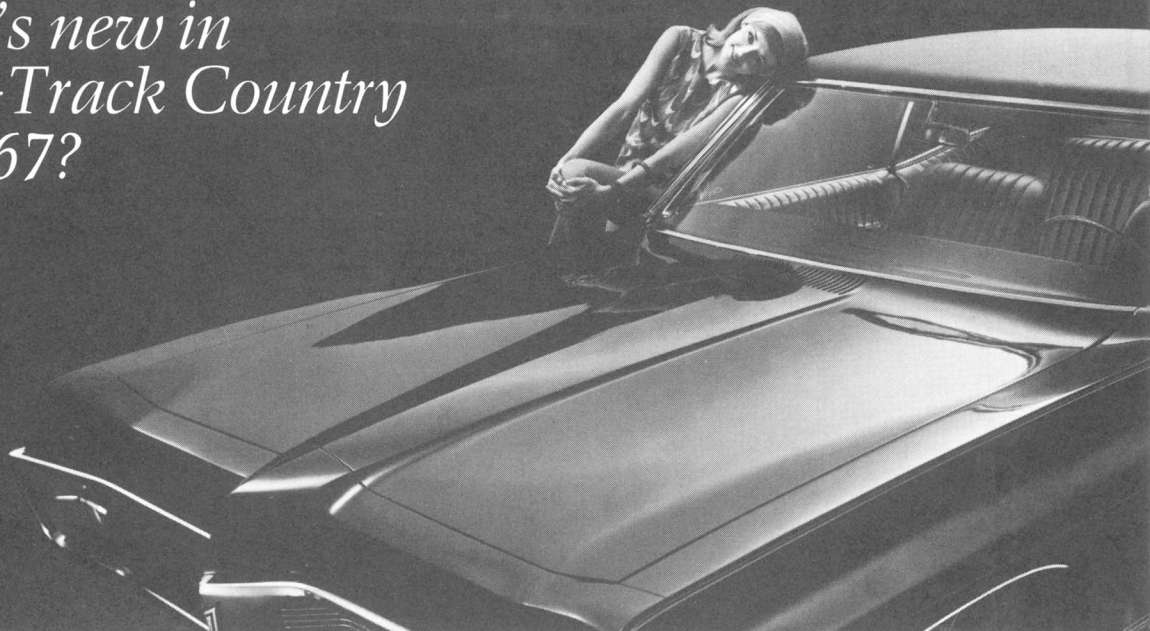


*What's new in
Wide-Track Country
for 1967?*



Everything is new in Wide-Track Country!

The 1967 Pontiac lineup is no lunch-hour alteration; it's a major change. You quickly get the idea of all-new styling when one is coming at you . . . or going away. And there's more newness to the '67 Pontiac than meets the eye. Take a few for instances—there are new safety features, new riding and driving features and a new engine lineup. When anyone asks you "What's new in Wide-Track Country?" riffle through these pages.



All-new Convertible model added / Concealed headlights are revealed when grille sections swing up and out of the way automatically as lights are turned on / Recessed windshield wipers inset below windshield molding give hood a clean, customized look* / Upper ventilation system provides draft-free air circulation with all windows closed / Unobstructed picture window effect achieved by elimination of vent windows on the

Grand Prix Hardtop Coupe / All Grand Prix engines have special cylinder heads with larger valves that allow better engine breathing, therefore better performance / Two full-length paint stripes are optional for upper fender and body side / Distinctive Grand Prix front and rear end styling. Two models available in Grand Prix series.

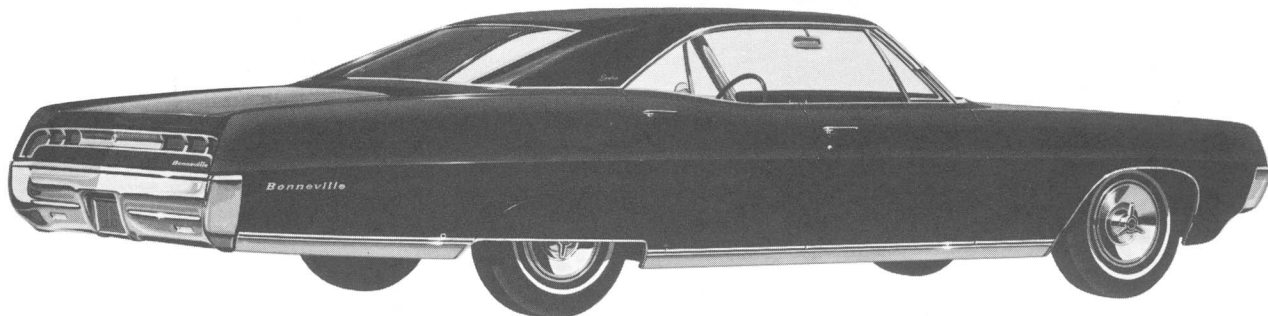
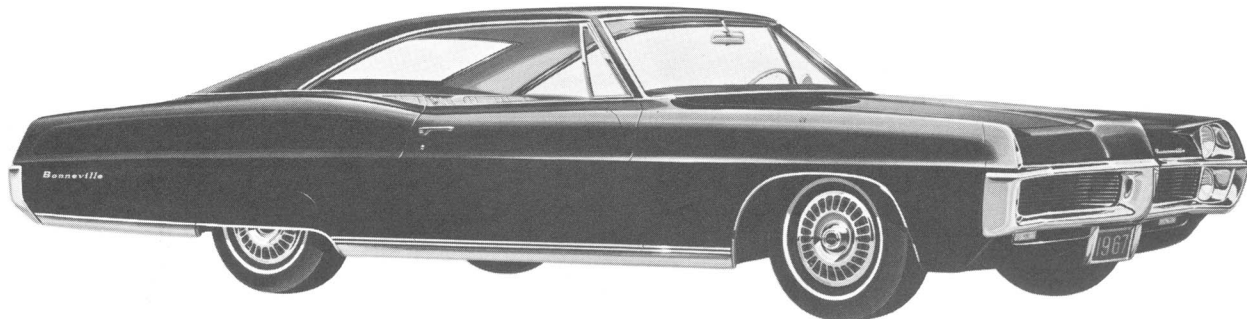
*Standard on Catalina, Executive, Bonneville and Grand Prix.

Grand Prix

Bonneville

Longer—222.6 inches / Unique Carpathian elm burl grain appearance on instrument panel / Notch-back bench front seat with standing center armrest / Redesigned roof line on Hardtop Coupe and 4-Door Hardtop / Redesigned rear end styling distinctive to

Bonneville / Bonneville nameplates on left upper hood extension, on rear fenders and rear panel / 400 cu. in. 4-BBL carb. 333-hp engine standard. Four models available in Bonneville series.



Brougham Custom Interiors feature: Strato-bench front seat with free standing center armrest / New cloth patterns / More deeply padded armrests and door panels / Power window lifts with controls for all windows in driver's armrest / Carpathian elm burl grain

appearance on upper door and instrument panels / All-new flexible door pulls integrated with door moldings / Newly styled instrument panel knobs / Script Brougham emblems on right and left sail panels. Available on Hardtop Coupe and 4-Door Hardtop.

Brougham

Executive

All-new 2- and 3-seat Safari Station Wagon models added to Executive Series / Walnut grain appearance paneling on exterior sides and on lower section of tailgate of Safari models / Deluxe wheel discs standard / Rich gunstock walnut grain finish on instrument panel / 3-spoke deluxe steering wheel standard / Decor

Group moldings / All expanded Morrokide interior / Electric clock, map and courtesy lamp are standard equipment / Executive nameplate on front fenders, Safari signature on tailgate. Five Executive models are available.



Catalina

Restyled front and rear / Overall length increased to 215.6 inches / Map and courtesy lamp is standard / 400 cu. in. 2-BBL carb. V-8 290-hp standard when you order the automatic transmission / Lower 2.29:1 axle ratio available for greater gas economy / Walnut

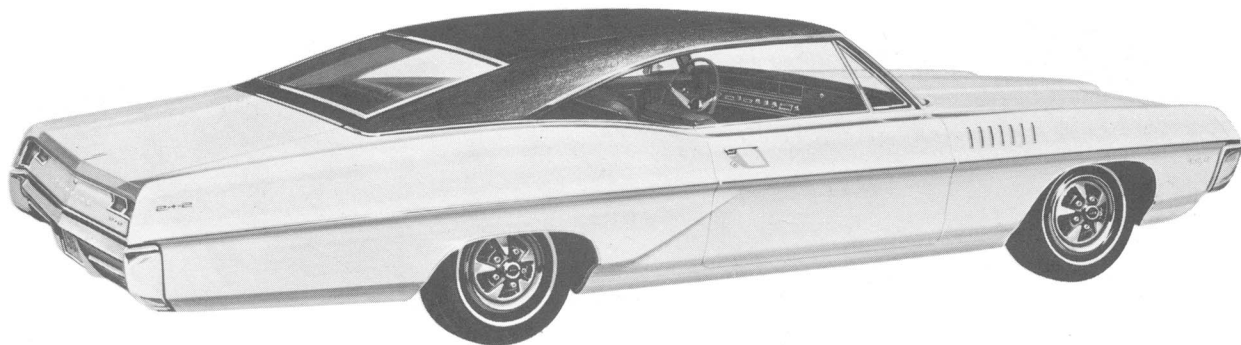
grain appearance instrument panel / Inside Day-Night Mirror with shatter-resistant vinyl edged glass and breakaway support* / Lane change feature incorporated in direction signal control.* Seven models available in Catalina series.

*Standard on all Pontiac cars.

2+2

Catalina 2+2 Sport Option features: Strato-bucket seats in expanded Morrokide/Exclusive 2+2 depressed louvers on both front fenders/Chromed air cleaner and rocker arm covers/Special performance rear axle/Sports-car type front and rear springs/Sports-car

type front and rear shock absorbers/Heavy-duty stabilizer bar/Dual exhausts/428 cu. in. V-8 360-hp premium fuel engine standard/4-BBL Quadrajet carburetor standard/Redesigned cylinder heads with larger valve ports.



Catalina Ventura Custom features: Strato-bucket seats for Hardtop Coupe and Convertible/Choice of cloth and expanded Morrokide or all expanded Morrokide in 4-Door Sedan and 4-Door Hardtop/All expanded Morrokide in Hardtop Coupe and Convertible/Rear seat radio speaker grille standard in Convertible and

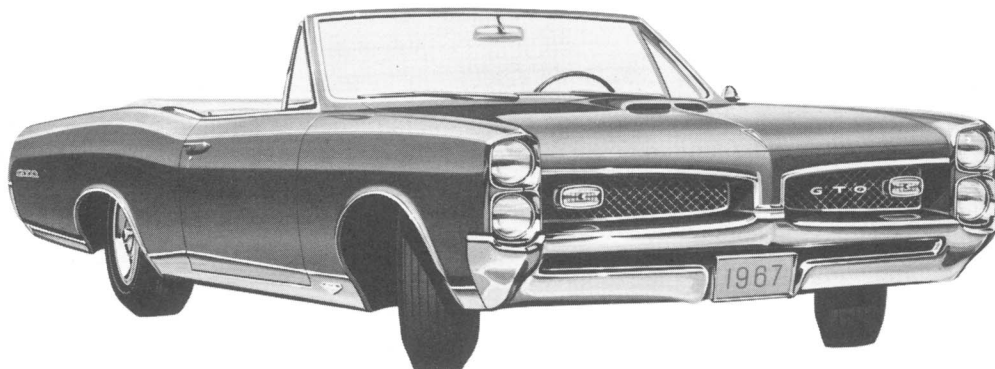
standard in Hardtop Coupe equipped with bucket seats/Chrome rear seat valance molding on Convertible/Added insulation in roof—all models except Convertible "Ventura" in block letters at rear of front fenders. Available on Hardtop Coupe, 4-Door Sedan, 4-Door Hardtop and Convertible.

Ventura

GTO

Exclusive GTO rear end design / Exclusive GTO paint stripes extending length of car / Strato-bucket front seats or Notch-back bench front seat with center armrest / Dual exhausts / Chrome-plated rocker arm covers, filler cap and air cleaner / 400 cu. in. V-8 4-BBL carb.

premium fuel 335-hp engine standard / 400 cu. in. V-8 2-BBL carb. regular fuel 255-hp engine now optional at no extra cost / Turbo Hydra-Matic transmission available at extra cost with all GTO engines. Three GTO models available.



Tempest Safari

New Tempest series added / These 2-seat Safari models feature: Exterior dark walnut grain appearance paneling extending from front to rear and across tailgate / Exclusive "Safari" nameplate / Walnut grain appearance paneling on instrument panel / 3-spoke deluxe steering wheel standard / Dual master cylinder brake

system with warning light. Front and rear brakes are hydraulically independent. Warning light indicates front or rear brake hydraulic problem. Also lights when parking brake is left on if car is moving.* One Safari model available.

*Standard on all Pontiac cars.

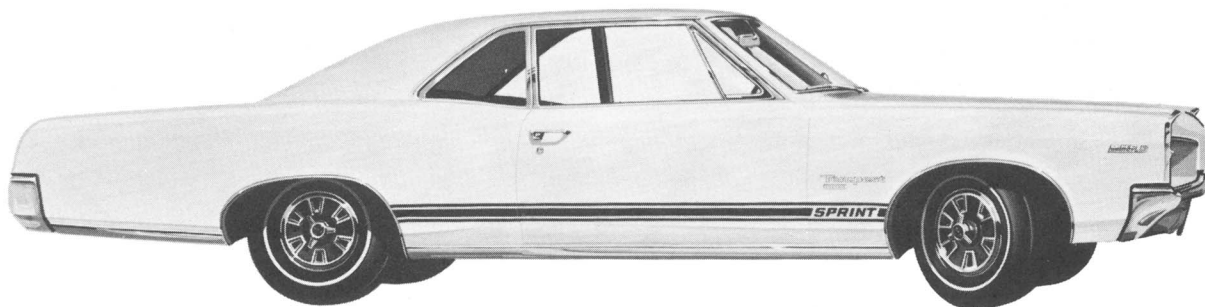
Le Mans

(with Sprint Option*)

Exclusive Le Mans rear end design / New Le Mans exterior and interior emblems / Deluxe steering wheel / Strato-bucket front seats or Notch-back bench front seat with center armrest / Overall body length increased to 206.6 inches / Sprint Option features: Distinctive Sprint Stripes and Sprint emblems / Stainless steel wheel opening moldings / High compression OHC 6

engine / Sports type front shocks and front springs / Heavy-duty front stabilizer bar / High lift camshaft / 4-BBL Quadrajets carb. / Heavy-duty main and connecting rod bearings / High RPM harmonic balancer / Heavy-duty fuel lines / Heavy-duty valve springs / Heavy-duty clutch assembly. Four Le Mans models available.

*Sprint option also available with Tempest, Tempest Custom.



Tempest Custom

Redesigned front and rear end / Bright rocker moldings / Overall body length increased to 206.6 inches / New custom-styled interiors / Restyled vinyl plastic kick pads have integral vent control knobs / Larger

instrument panel controls are labeled for easier identification* / Direction signal light indicates either right or left turn* / Delco eye energizer battery.* Six Tempest Custom models available.

*Standard on all Pontiac cars.

Tempest

Redesigned front and rear end styling / Energy absorbing steering column* / Passenger-guard door locks on all doors. When lock buttons are depressed, doors cannot be opened* / Folding seat back latches on wagons and two-doors keep seat back securely in place* / 4-way

hazard warning flasher. All direction signals blink when operated by control lever* / Front and rear seat belts (4) with pushbutton buckles.* Three models available in Tempest Series.

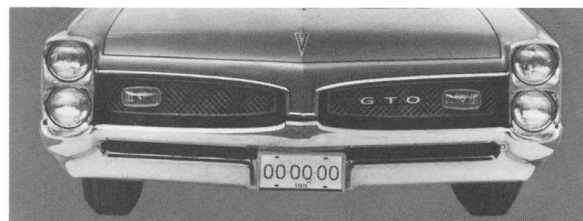
*Standard on all Pontiac cars.



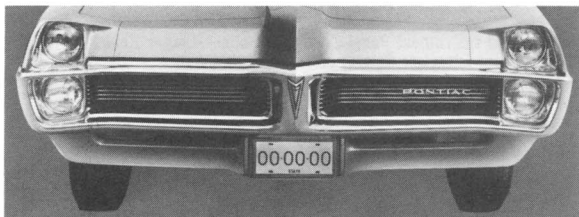
Same family but different faces



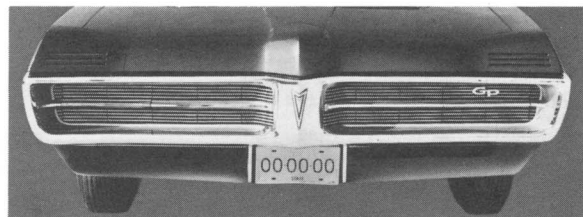
Grille on Tempest, Tempest Custom, Le Mans and Tempest Safari



Grille on GTO



Grille on Catalina, Executive, Bonneville



Grille on Grand Prix

New Product Features

1967 Tempest, Tempest Custom, Le Mans, Tempest Safari, GTO

- All New Safari Station Wagon Added
- New 400 cu. in. Engine—Standard on GTO
- Improved OHC 6 Engine Provides Better Cooling, Better Oil Economy and Oil Filtration
- New Standard Safety Features Include:
 - Energy Absorbing Steering Column
 - Four-way Hazard Warning Flasher
 - Lane Change Feature Incorporated in Direction Signal Control
 - Dual Master Cylinder Brake System with Warning Light
 - Front and Rear Seat Belts (4) with Pushbutton Buckles
 - Parking Brake Warning Light
 - Passenger-guard Door Locks — All Doors
 - Folding Front Seat Back Latches
 - Inside Day-Night Mirror with Shatter-resistant Vinyl Edged Glass and Breakaway Support
- Labeled Instrument Panel Control Switches
- Dual Direction Signal Indicator Lights
- New Steering Wheel
- Powerful Energizer Battery is Standard
- New Interior Fabrics—New Color Combinations
- All New Exterior Styling Features
- 12 New Exterior Colors
- New Options and Accessories

1967 Catalina, Executive, Bonneville, Grand Prix

- New 400 cu. in. V-8 Engines are Standard
- 2 New Executive Safari Station Wagons Added
- New Grand Prix Convertible Added
- 2+2 Now Available as a Catalina Option
- New Standard Safety Features Include:
 - Energy Absorbing Steering Column
 - Four-way Hazard Warning Flasher
 - Lane Change Feature Incorporated in Direction Signal Control
 - Dual Master Cylinder Brake System with Warning Light
 - Front and Rear Seat Belts (4) with Pushbutton Buckles
 - Parking Brake Warning Light
 - Passenger-guard Door Locks — All Doors
 - Folding Front Seat Back Latches
 - Inside Day-Night Mirror with Shatter-resistant Vinyl Edged Glass and Breakaway Support
- New Lower 2.29:1 Axle Ratio Available for Catalina
- Recessed-park Articulated Overlap Windshield Wipers
- New Self-adjusting Hood Latch
- Rich Wood Grain Appearance Instrument Panel
- Labeled Instrument Panel Control Switches—Larger Knobs
- Powerful Energizer Battery is Standard
- New Steering Wheel
- Concealed Stationary Headlamps with Movable Covers —Grand Prix
- Upper Level Draft-free Ventilation—Grand Prix
- New Interior Fabrics—New Color Combinations
- All New Exterior Styling Features
- 12 New Exterior Colors
- New Options and Accessories