

Behind everything we do, behind all the thinking and the research, the sketching and the designing, the all-nighters and grey hairs, the scale models and clay models, the engineering, the collaboration, the heated discussions, the obsessing and the fine-tuning, the countless rounds of testing, the choosing of materials, the shaping and the smoothing, the comfort testing and the performance testing, the incessant refining, the tooling and the building, there's just one thing. A philosophy.

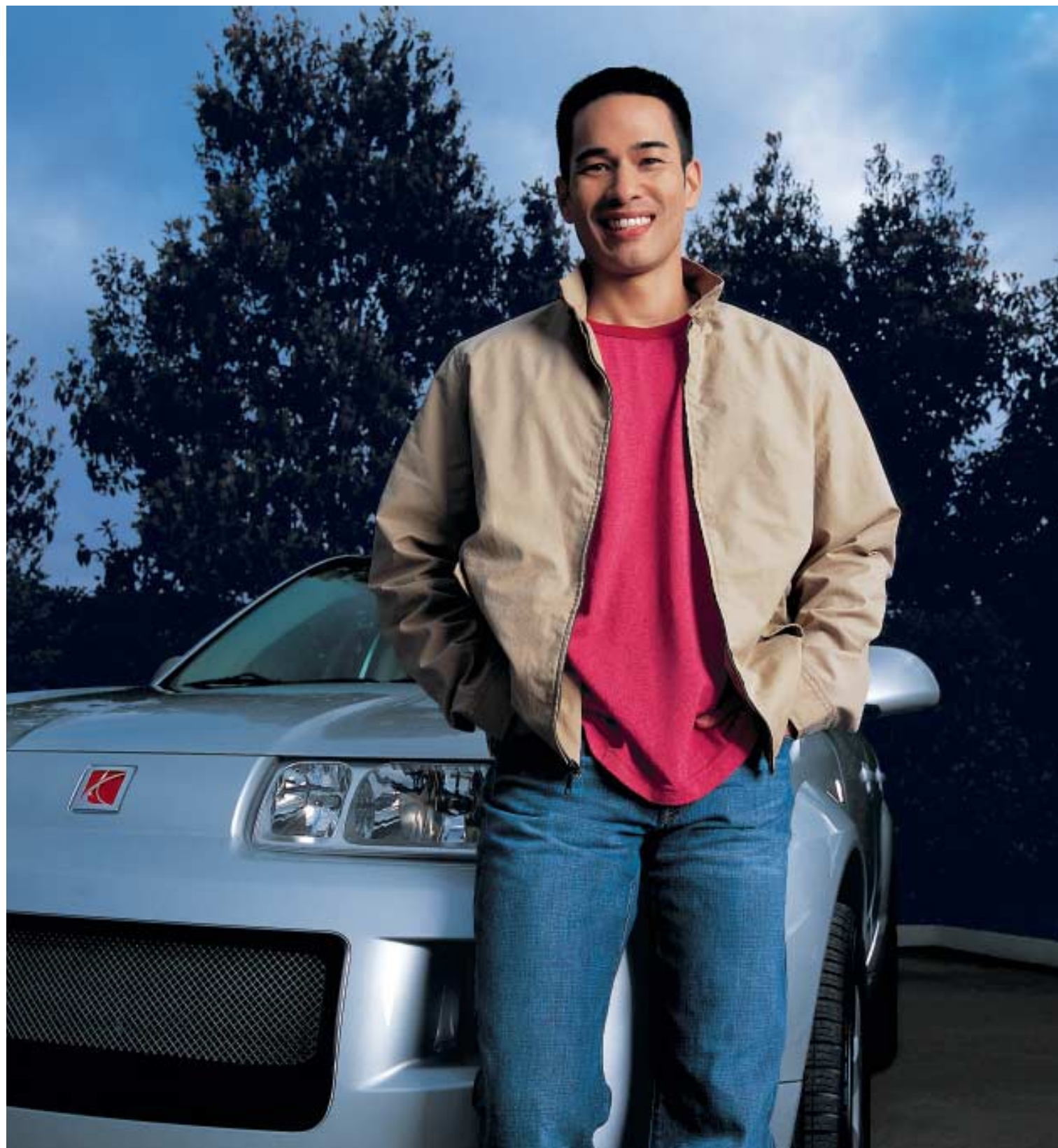


Saturn. People first.

saturncanada.com



Saturn. People first.



People first. It's a simple statement, just two words. And yet, it defines everything we do, from design and engineering to the way you're treated every time you visit a Saturn store.

As you go through the pages of this brochure, you'll learn more about each of our models. But you'll also discover that the thinking we put into every Saturn defines who we are as a company. Our designers study how and when and why people use their cars, so they can create vehicles that have the ability to both perform and amaze. Our engineers contemplate, modify, test and scrutinize every component down to the smallest bolt and microchip. And finally, there are Saturn Retailers, who have mastered the art of creating a perfect match between people and the vehicles they drive.

So, if you've ever wondered what gets us up and out of bed in the morning, here's the answer: It's you.

Welcome to Saturn 2005.

*VUE® and VUE Red Line
Pages 8–23*



*ION® sedan
Pages 24–35*



*ION Quad Coupe and ION Red Line
Pages 36–49*



*RELAY™
Pages 50–63*





Unlike conventional air bags, dual-stage front air bags¹ use sensors to deploy at two different rates of inflation to better match collision force. They're an important addition to our safety belt system, and they come standard on every ION, VUE and RELAY.



Research it. Build it. Price it.
Schedule a visit to test-drive it.
All the tools you need are
online at saturncanada.com.



Safety is part of every Saturn's DNA. When you drive a Saturn, you're actually driving a tightly integrated and rigorously tested system of safety features. The foundation is a steel structure that creates a cage around the passenger compartment and helps direct crash energy away from the interior. The strength and structural integrity of steel cage construction make it an essential component of most racecars and other high-performance vehicles. Of course, protecting people is an ongoing responsibility, and our engineers' continuous innovation has made dozens of unexpected safety and security features possible, like three-ply laminated windshields that have the strength and flexibility to help absorb the force of impact, an engine-immobilizing theft-deterrent feature that disables the fuel pump if someone tampers with the ignition, and a front safety belt system that's specially designed to work together with our dual-stage air bags¹ to help reduce collision-related injuries.

The Saturn Promise. Too often, customer service is treated as some sort of luxury, like an option with a really high sticker price. But not here. At Saturn, we believe you should be allowed to browse the showroom without getting hassled, and talk about price and financing without going through the bothersome and antiquated ceremony of haggling. And because hearts and minds can change, we offer our 30-day Vehicle Exchange Program.² In fact, we think of ourselves as an always-available resource for any question you might have about your Saturn—either the one you already own, or the one you might buy. Simply put, the Saturn Promise means we focus on doing what's right instead of doing what's easy. If you need help, we'll offer it. If you want something, we'll get it. If there's a problem, we'll work to fix it.

¹See inside back cover for important information about air bags, including a note about child safety.

²See inside back cover for details.



It only takes a single moment of distraction to find yourself on one side of a locked car door and your keys on the other. So it's no surprise that Remote Door Unlock is one of the features OnStar subscribers use the most. One call to an OnStar operator, and you and your keys will be reunited.

Bring a support crew with you wherever you go. OnStar® takes the combined power of the GPS satellite network and digital cellular technology and concentrates it in a single button. Just a few of the things OnStar can do: unlock your doors remotely, help locate your car if it has been stolen, send assistance if you're stranded, and send help automatically if your air bags deploy. Depending on which services you subscribe to, OnStar can also deliver personalized weather and traffic updates, provide detailed directions, and help with hard-to-get reservations and tickets.¹



¹OnStar is available on most Saturn models. See model specifications pages and inside back cover for important information.

Welcome to the Design Lab. It's the place where ideas are celebrated, boundaries get pushed, and the work rarely ever stops. It's also where every Saturn begins its journey from pencil sketch to sheet metal. The designers who work here are keen collaborators, and work in tandem with colleagues located around the world. Those partnerships will be even more evident in the next generation of Saturn cars, which will be more advanced, more powerful and more head-turning than ever before.



Ideas can come from anywhere. In Saturn's case, they come from everywhere: Detroit and the California coast to South America, England, Sweden, Australia, and beyond. With designers located all over the world, we're able to keep tabs on the latest and best technologies, materials and trends and incorporate them into each of our models.



Meet The **Don't Fence Me In** Barretts.



Meet Their **250-horsepower V-6** VUE.



250-hp V-6 engine. Available with front-wheel drive or all-wheel drive. Independent front and rear suspension. Anti-lock brakes. Power windows and door locks with remote keyless entry. Auto-dimming inside rearview mirror with temperature and compass display. Air conditioning with dust and pollen filter. Saturn Security System. Reclining rear seats. Fold-flat front passenger seatback. Rear cargo organizer. Low step-in height and eight inches of ground clearance. Leather-wrapped steering wheel.

This is the AWD V6 with Retailer-installed side step bars and roof rack, shown in Chili Pepper Red. To see the VUE in all seven colours, visit saturncanada.com/vue.





Heated front seats don't just ward off the cold. They also have a knack for soothing muscles made stiff from sitting at a desk all day. They're part of the Comfort Package that is available on the VUE.



Passengers are denied the fun of driving. So keep them entertained with the available DVD entertainment system with 7-inch flip-down screen.

The vehicle of choice for those with way too much to do. Life isn't always simple, and it isn't about doing the same thing over and over again. That's why the VUE is practical and luxurious, rugged and comfortable, commute-friendly and getaway-oriented—all at the same time. Its interior is packed with thoughtful amenities, including air conditioning with a dust and pollen filter, reclining rear seats, and liftgate loading lights. Standard features on the V-6 models also include remote keyless entry, auto-dimming inside rearview mirror with temperature and compass display, power windows and fog lamps. And for those who like choices, the VUE has plenty of options to consider, including a power sunroof, Leather Package, and Premium Audio, just to name a few. For a complete list, visit saturncanada.com/vue.

AWD V6 shown with available features.





- A. Fold-up rear cargo organizer, standard.
 B. Rear cargo bins, standard.
 C. Fold-flat scuff-resistant front passenger seatback, standard.
 D. Cargo cover, available as a Retailer-installed accessory.
 E. Roof rack with bike attachment, available as a Retailer-installed accessory.



The first rule of cargo space: Be flexible. Sometimes you have more passengers than gear; other times, more gear than passengers. That's why the VUE's passenger seating and cargo spaces are efficiently flexible, thanks to features like the easily folded 70/30-split rear seats and fold-flat front passenger seatback. The rear cargo organizer locks quickly into place when you need a place to put grocery bags and water bottles, folds flat when you don't. Integrated roof rails with crossbar mounting locations, are standard with a range of available attachments, making it easy to bring along the outdoor equipment of your choice.

Cargo and load capacity limited by weight and distribution.



With hundreds of thousands of kilometres of testing under their belts, VUE engineers know that the road is notoriously unpredictable. Since you can't always foresee slippery conditions, the VUE's available all-wheel drive is always on and there when you need it.

BELOW. The 250-hp V-6 engine has a refined power: quick to respond, but equally comfortable at cruising speeds. It also allows both the FWD V6 and AWD V6 models to be designated as Ultra Low Emissions Vehicles.¹

Engines don't thrive on horsepower alone. Additional elements like torque, gear ratios, and precise tuning work together to balance the VUE's powerful and rugged side with its easygoing and versatile side. The 143-horsepower, 2.2-litre, 4-cylinder engine produces 152 ft. lbs. of torque, and is tuned for the quick starts and stops of errand-running and city driving. Designed with a steel timing chain, it's a durable, low-maintenance choice. The 24-valve V-6 engine offers a hefty dose of muscle—250 horsepower with a towing capacity of up to 1587.6 kg (3,500 lb)²—so it's perfectly at home in the passing lane, but still offers a relaxed, polished ride for weekend excursions to out-of-the-way places. As for handling, every VUE has tight, responsive electric power steering and independent front and rear suspension. Of course, the VUE's performance story doesn't end there; details on the VUE's transmission and powertrain combinations can be found at saturncanada.com/vue, including the outstanding fuel economy results.

¹Certified to California Low Emission Vehicle Standards-II and Federal Tier-II Standards.

²Maximum trailer ratings are calculated assuming a properly equipped base vehicle plus driver. Towing capacity is not applicable to VUE Red Line models. See specifications page and your Retailer for details.





The VUE Red Line is shown here in Black Onyx, but is also available in Silver Nickel and Electric Lime.

2005 VUE Red Line

ION SEDAN





The VUE Red Line is equipped with performance springs and struts for a lowered look and a tight, road-responsive ride with precise cornering and handling.



When they're not busy customizing their own cars and attending club meets and track events, you can find Saturn's Red Line engineers poring over the pages of tUNINGWERKS, evo, and BBC TopGear—required reading for tuners everywhere.



How to stand out in a crowded parking lot. Saturn's Red Line team was created for one reason—to design vehicles that offer the best of Saturn, only more of it. More looks, more performance, more driving fun. The VUE Red Line combines the performance of the 250-horsepower V-6 engine with the aggressive, lowered look of a street machine. Among its credentials: eighteen-inch alloy wheels with low-profile tires, front and rear ground effects, side rocker ground effects, a lowered chassis, modified front grille, chrome exhaust tip, performance-tuned suspension, and a generous envelope for additional personalization.

If you're thinking about adding your own modifications, see the inside back cover for an important note about alterations and warranties.

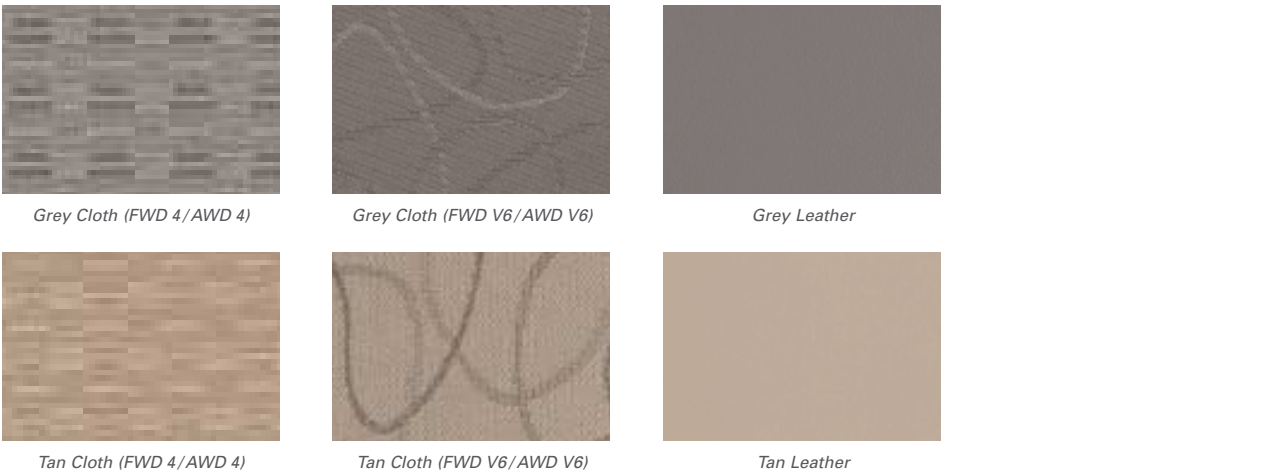


VUE Exterior Colours

Want to see all the colours from a different angle? Visit saturncanada.com/vue, and the VUE is yours to control.



VUE Interior Colours



VUE Colour Combinations

Exterior Paint	Cloth	Available Leather Package	Red Line Cloth	Red Line Available Leather Package
Polar White	Grey, Tan	Grey, Tan	—	—
Black Onyx	Grey, Tan	Grey, Tan	Grey, Tan	Grey, Tan
Silver Nickel	Grey	Grey	Grey	Grey
Chili Pepper Red	Grey, Tan	Grey, Tan	—	—
Pacific Blue	Grey, Tan	Grey, Tan	—	—
Dragonfly Green	Grey, Tan	Grey, Tan	—	—
Storm Grey	Grey, Tan	Grey, Tan	—	Grey, Tan

VUE Wheels



¹Cargo and load capacity limited by weight and distribution. ²Maximum trailer ratings are calculated assuming a properly equipped vehicle, except for any options necessary to achieve the ratings, plus driver. The weight of other optional equipment, passengers and cargo will reduce the maximum trailer weight your vehicle can tow. See your Retailer for details.³Requires Power Package. ⁴Service Contract required. Includes 1 year Safe & Sound Plan. OnStar services require vehicle electrical system and wireless service to be available and operating for features to function properly. OnStar relies on existing emergency service providers as well as wireless and satellite technologies and is subject to their limitations. Due to the transition of the wireless industry from analog to digital technology, as of January 1, 2008, OnStar plans to offer service only through equipment that operates on the digital network, which may require the purchase of a system upgrade. Call 1-888-4ONSTAR (1-888-466-7827), see your OnStar Owner's Guide, or visit www.onstarcanada.com for system information and details. ⁵Requires Radio 1 or Radio 2 and Power Package.

VUE Specifications

Engine and Transmission	FWD 4	AWD 4	FWD V6	AWD V6
Engine	2.2-litre, DOHC, 16-valve, inline-4, twin balance shafts	2.2-litre, DOHC, 16-valve, inline-4, twin balance shafts	3.5-litre, SOHC, 24-valve, V-6	3.5-litre, SOHC, 24-valve, V-6
Horsepower	143 @ 5,400 rpm	143 @ 5,400 rpm	250 @ 5,800 rpm	250 @ 5,800 rpm
Torque (ft. lbs.)	152 @ 4,000 rpm	152 @ 4,000 rpm	242 @ 4,500 rpm	242 @ 4,500 rpm
Transmission (standard)	5-speed manual	Variable (VTi)	5-speed automatic	5-speed automatic
Transmission (available)	4-speed automatic	—	—	—
Chassis	Front-engine/front-wheel drive (FWD 4/FWD V6); Front-engine/all-wheel drive (AWD 4/AWD V6)			
Drivetrain	Steel spaceframe with front and rear crumple zones, side-impact protection and front and rear vibration-isolating subframes			
Body construction	Four-wheel independent with front and rear stabilizer bars			
Suspension	Electric power with variable assist			
Steering	Power-assisted ventilated front disc/rear drum			
Brakes				
Weights and Capacities				
Curb weight, manual/automatic kg. (lbs.)	1,472.36 / 1,411.13 (3,246 / 3,111)	— / 1,555.82 (— / 3,430)	— / 1,577.59 (— / 3,478)	— / 1,646.99 (— / 3,631)
Passenger volume litres (cu. ft.)	2,832 (100.0)	2,832 (100.0)	2,832 (100.0)	2,832 (100.0)
Cargo-area volume with seatbacks up / down litres (cu. ft.) ²	873 / 1,807 (30.8 / 63.8)	873 / 1,807 (30.8 / 63.8)	873 / 1,807 (30.8 / 63.8)	873 / 1,807 (30.8 / 63.8)
Fuel capacity aprox. litres (imp. gal.)	61.7 (13.6)	61.7 (13.6)	61.7 (13.6)	61.7 (13.6)
Towing capacity ² (max.kg. (lbs.); not applicable to Red Line models) ³	680.39 (1,500)	680.39 (1,500)	1,587.57 (3,500)	1,587.57 (3,500)
Passenger seating	5	5	5	5
Fuel Consumption City / Hwy (L / 100 km)				
Manual transmission	10.4 / 7.4	—	—	—
VTi Variable transmission	—	11.0 / 8.1	—	—
Automatic transmission	Figures not available at time of print	—	11.9 / 7.8	12.6 / 8.5
Exterior Dimensions mm (in.)				
Length	4,605 (181.3)	4,605 (181.3)	4,605 (181.3)	4,605 (181.3)
Wheelbase	2,707 (106.6)	2,707 (106.6)	2,707 (106.6)	2,707 (106.6)
Width	1,817 (71.5)	1,817 (71.5)	1,817 (71.5)	1,817 (71.5)
Height	1,686 (66.4)	1,686 (66.4)	1,686 (66.4)	1,686 (66.4)
Track, front/rear	1,550/1,550 (61.0/61.0)	1,550/1,550 (61.0/61.0)	1,550/1,550 (61.0/61.0)	1,550/1,550 (61.0/61.0)
Ground clearance	203 (8.0)	203 (8.0)	203 (8.0)	203 (8.0)
Interior Dimensions front/rear mm (front / rear in.)				
Legroom	1,047 / 934 (41.2 / 36.8)	1,047 / 934 (41.2 / 36.8)	1,047 / 934 (41.2 / 36.8)	1,047 / 934 (41.2 / 36.8)
Headroom*	1,027 / 1,025 (40.4 / 40.3)	1,027 / 1,025 (40.4 / 40.3)	1,027 / 1,025 (40.4 / 40.3)	1,027 / 1,025 (40.4 / 40.3)
Shoulder room	1,408 / 1,405 (55.4 / 55.3)	1,408 / 1,405 (55.4 / 55.3)	1,408 / 1,405 (55.4 / 55.3)	1,408 / 1,405 (55.4 / 55.3)
Hip room	1,311.2 / 1,337 (51.6 / 52.7)	1,311.2 / 1,337 (51.6 / 52.7)	1,311.2 / 1,337 (51.6 / 52.7)	1,311.2 / 1,337 (51.6 / 52.7)
*without sunroof				
VUE Features and Options	FWD 4	AWD 4	FWD V6	AWD V6
Comfort and Convenience				
70/30-split folding rear seatbacks and two-position reclining rear seats	●	●	●	●
Air conditioning with dust and pollen filter	●	●	●	●
Comfort Package: 6-way power driver's seat with adjustable lumbar support and heated front seats ³	○	○	○	○
Dent/corrosion-resistant bodyside panels	●	●	●	●
Flat-towable behind recreational vehicle	●	—	●	—
Floor mats, carpeted front and rear	●	●	●	●
Fold-flat front passenger seatback with scuff-resistant back	●	●	●	●
Front and rear 12-volt power outlets	●	●	●	●
Height-adjustable driver's seat	●	●	●	●
Leather Package: leather seating surfaces and leather wrapped steering wheel with leather shifter knob ³	○	○	○	○
Liftgate loading lights	●	●	●	●
Power Package: power windows, Saturn Security System (power door locks with remote keyless entry, content theft, anti-lock out and theft deterrent system), auto-dimming rearview mirror with compass and temperature, power remote control side mirrors, cruise control, overhead console light and automatic light control	○	○	●	●
Automatic light control	—	—	●	●
Power sunroof (not available with DVD entertainment system) ³	○	○	○	○
Rear cargo organizer	●	●	●	●
Rear window washer/wiper and defogger with timer	●	●	●	●
Reclining front bucket seats with adjustable head restraints and inboard fold-down armrests	●	●	●	●
Safety and Security				
Anti-lock brakes	—	○	—	●
Anti-lock brakes with Traction Control	○	—	●	—
Daytime running lamps	●	●	●	●
Dual-stage driver and front passenger air bags	●	●	●	●
Engine-immobilizing theft-deterrent feature	●	●	●	●
Foglamps	—	○	●	●
Head Curtain Side Air Bags	○	○	○	○
Height-adjustable front safety belts with pretensioners and energy-absorbing retractors	●	●	●	●
Lower Anchorages and Top Tethers for Children (LATCH) in all rear seating positions	●	●	●	●
Safe & Sound Package: includes Head Curtain Side Air Bags, AM/FM stereo with single CD, MP3, auto tone, clock and RDS, OnStar and Comfort Package. Can upgrade to Radio 2 or Radio 3 ⁴	—	—	○	○
Entertainment Systems				
Radio 1: Single CD/MP3 player with AM / FM stereo and 6 coaxial speakers	○	○	○	○
Radio 2: 6-disc, in-dash CD /MP3 player with AM / FM stereo and 6 coaxial speakers	○	○	○	○
AM/FM stereo, single CD/MP3, navigation, DVD with rear seat entertainment package ³	○	○	○	○
Saturn Advanced Audio System: 180-watt external amplifier, 8" subwoofer, 6 premium speakers ⁵	○	○	○	○
Red Line Package				
Lowered sport-tuned suspension with performance springs and struts, 18" alloy wheels, fascia and side-rocker ground effects and chrome exhaust tip	—	—	○	○

● = standard ○ = available — = not available

Meet Sara Knows A Good Thing When She Sees It Briscoe.



Meet Her Easy To Buy, Easy To Own ION•3 Sedan.



140-hp, 2.2-litre, 4-cylinder Ecotec™ engine. Independent front suspension with semi-independent torsion-beam rear suspension. CD/MP3 player. Power windows, door locks and exterior mirrors. Air conditioning with dust and pollen filter. Remote keyless entry. Cruise control. Automatic halogen headlamps. Height-adjustable driver's seat with lumbar support. Rear theatre seating. Dent- and ding-resistant polymer side panels. 16-inch alloy wheels.

The re-styled ION-3, shown in Storm Grey. To build and price an ION in the colour of your choice, visit saturncanada.com/ionedan.





The Articulation Index measures the ability to have a conversation without yelling and hear music without raising the volume to eleven. Thanks to numerous refinements, the ION's index numbers are better than ever.



From the exact amount of pressure required to activate the horn to the precise angle of the gearshift knob, every element of the ION's cockpit has been analyzed in order to improve ergonomic comfort.



It's a well-known meteorological fact that rain and low visibility go together. Which is why the ION-3's headlamps go on automatically when there's low light or when you activate the windshield wipers. It's just one less thing to think about when you're driving.



Designed by people who know that good enough isn't good enough. Behold the refined interior of the ION•3, with its chrome accents, redesigned steering wheel and gearshift knob, and front seats with substantial side bolsters for generous lateral support and driving comfort. ION engineers also incorporated several new noise-reduction technologies, including Quiet Steel® laminate in the dash area, and advanced hydraulic bushings—the components that connect the spaceframe to the chassis—which automatically become more pliant over rough roads for a well-insulated ride.

The ION•3 sedan in this brochure is shown with available Grey Leather Package and other available features.



Where does practicality end and luxury begin? The ION wisely blurs the line between the two, with intuitive features and options that could leave you wondering how you ever lived without them. Some examples: the engine oil-life monitor, in-dash storage bins, turn signal left-on reminder, retained accessory power, available 6-disc CD/MP3 player, and available OnStar System¹, just to name a few. For a complete list, visit saturncanada.com/ion sedan.

¹Not available on ION•1. See inside back cover for important information about OnStar. ²Comparison based on GM's 2004 Low Sedan segment and latest available competitive data at time of printing. Cargo and load capacity limited by weight and distribution.



ION engineers borrowed an idea from theaters and stadiums and raised the rear seats by over an inch. Now everyone has a good view.



A. Split folding rear seatbacks, standard.

B. 6-disc, in-dash CD/MP3 player, available on ION-2 and ION-3.

C. Power windows and side mirrors, standard on the ION-3, available on the ION-2.

D. The ION sedan's mammoth (and class-leading) 416 litre (14.7-cu.ft.) trunk.²



Choose the ION's available 4-speed automatic 4T-45E transaxle transmission, and you get an automatic designed to make authoritative gear selections. After all, decisive shifting is what smooth rides are made of.

A tribute to the instant when red goes green. The ION's 140-hp 4-cylinder Ecotec engine serves up a bundle of torque at low speeds for quick off-the-mark performance. It's paired with a 5-speed Getrag manual transmission, which comes standard, or an available 4-speed automatic transmission. The electric power steering has been painstakingly calibrated to each of the ION's wheel-tire combinations to balance excellent handling at fast cruising speeds with easy steering at low parking-lot speeds. The combination of anti-lock brakes and Traction Control is available on any ION sedan—the system is designed with an electronic control unit and individual wheel-speed sensors to help prevent wheels from locking up during hard braking situations or losing grip in slippery driving conditions.

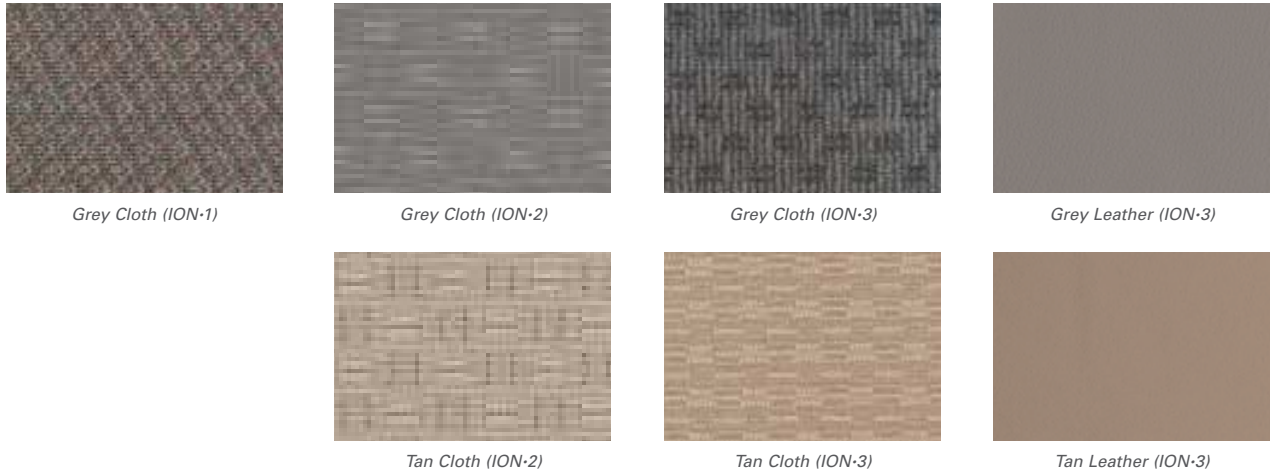


ION Sedan Exterior Colours

Every colour and lots of angles. Visit saturncanada.com/ionsedan for an even better view.



ION Sedan Interior Colours



ION Sedan Colour Combinations

Exterior Paint	Cloth (ION-1)	Cloth (ION-2/ION-3)	Available Leather Package (ION-3)
Polar White	Grey	Grey, Tan	Grey, Tan
Black Onyx	Grey	Grey, Tan	Grey, Tan
Silver Nickel	Grey	Grey	Grey
Berry Red	Grey	Grey, Tan	Grey, Tan
Storm Grey	—	Grey	Grey
Golden Wheat	—	Tan	Tan
Pacific Blue	—	Grey, Tan	Grey, Tan
Dragonfly Green	—	Tan	Tan

ION Sedan Wheels



¹Cargo and load capacity limited by weight and distribution. ²Requires Convenience Package. ³Requires Radio 2 or Radio 3 and Travel Package. Service Contract required. Includes 1 year Safe & Sound Plan. OnStar services require vehicle electrical system and wireless service to be available and operating for features to function properly. OnStar relies on existing emergency service providers as well as wireless and satellite technologies and is subject to their limitations. Due to the transition of the wireless industry from analog to digital technology, as of January 1, 2008, OnStar plans to offer service only through equipment that operates on the digital network, which may require the purchase of a system upgrade. Call 1-888-4ONSTAR (1-888-466-7827), see your OnStar Owner's Guide, or visit www.onstarcanada.com for system information and details. ⁴Requires Radio 2 or Radio 3 and Convenience Package.

ION Sedan Specifications

Engine and Transmission	ION-1	ION-2	ION-3
Engine	2.2-litre, DOHC, 16-valve, inline-4, twin balance shafts 140 @ 5,800 rpm	2.2-litre, DOHC, 16-valve, inline-4, twin balance shafts 140 @ 5,800 rpm	2.2-litre, DOHC, 16-valve, inline-4, twin balance shafts 140 @ 5,800 rpm
Horsepower	145 @ 4,400 rpm	145 @ 4,400 rpm	145 @ 4,400 rpm
Torque (ft. lbs.)	5-speed manual	5-speed manual	5-speed manual
Transmission (standard)	4-speed automatic	4-speed automatic	4-speed automatic
Transmission (available)			
Chassis			
Drivetrain	Front-engine/front-wheel drive		
Body construction	Steel spaceframe construction with front and rear crumple zones and side-impact protection		
Suspension	Independent front and semi-independent torsion-beam rear with front and rear stabilizer bars		
Steering	Electric power with variable assist, tuned for each model		
Brakes	Power-assisted ventilated front disc/rear drum		
Weights and Capacities			
Curb weight, manual / automatic kg. (lbs.)	1,234.68/1,261.44 (2,722/2,781)	1,244.2/1,270.97 (2,743/2,802)	1,257.36/1,284.12 (2,772/2,831)
Passenger volume litres (cu. ft.)	2,632 (93.0)	2,632 (93.0)	2,632 (93.0)
Cargo-area volume litres (cu. ft.) ¹	416 (14.7)	416 (14.7)	416 (14.7)
Fuel capacity approx. litres (imp. gal.)	50 (11.2)	50 (11.2)	50 (11.2)
Passenger seating	5	5	5
Fuel Consumption City / Hwy (L / 100 km)			
Manual transmission	9.5 / 6.1	9.5 / 6.1	9.5 / 6.1
Automatic transmission	9.9 / 6.6	9.9 / 6.6	9.9 / 6.6
Exterior Dimensions mm (in.)			
Length	4,686 (184.5)	4,686 (184.5)	4,686 (184.5)
Wheelbase	2,621 (103.2)	2,621 (103.2)	2,621 (103.2)
Width	1,707 (67.2)	1,707 (67.2)	1,707 (67.2)
Height	1,458 (57.4)	1,458 (57.4)	1,458 (57.4)
Track, front / rear	1,494/1,483 (58.8/58.4)	1,494/1,483 (58.8/58.4)	1,494/1,483 (58.8/58.4)
Interior Dimensions front / rear mm (in.)			
Legroom	1,072/845 (42.2/33.3)	1,072/845 (42.2/33.3)	1,072/845 (42.2/33.3)
Headroom	1,016/940 (40.0/37.0)	1,016/940 (40.0/37.0)	1,016/940 (40.0/37.0)
Shoulder room	1,364/1,341 (53.7/52.8)	1,364/1,341 (53.7/52.8)	1,364/1,341 (53.7/52.8)
Hip room	1,257/1,259 (49.5/49.6)	1,257/1,259 (49.5/49.6)	1,257/1,259 (49.5/49.6)

ION Sedan Features and Options

Comfort and Convenience	ION-1	ION-2	ION-3
60/40-split folding rear seatbacks	●	●	●
Adjustable steering column	●	●	●
Air conditioning with dust and pollen filter	○	●	●
Dent/corrosion-resistant bodyside panels	●	●	●
Dual 12-volt power outlets	●	●	●
Dual visor vanity mirrors	●	●	●
Flat-towable behind recreational vehicle	●	●	●
Floor mats, carpeted front and rear	●	●	●
Front console with open storage and two cupholders	●	—	—
Console – front console with adjustable armrest, enclosed storage and dual front cupholders	—	●	—
Console – front console with adjustable armrest, enclosed storage and dual front and rear cupholders	—	—	●
Height-adjustable driver's seat (ION-3 also includes manual lumbar adjustment)	—	●	●
LCD message center including low-fuel indicator and oil-life monitor	●	●	●
Leather Package: leather seating surfaces, leather wrapped steering wheel and automatic shift knob	—	—	○
Power door locks with anti-lockout, delayed locking and programmable lock / unlock	—	●	●
Convenience Package: cruise control, power windows, power exterior mirrors, remote keyless entry and alarm	—	○	●
Power sunroof ²	—	○	○
Rear spoiler	—	○	○
Rear window defogger with manual shutoff and timed reset	●	●	●
Retained accessory power	●	●	●
Storage compartments: three bins in instrument panel, front and rear door map pockets, and glove box	●	●	●
Travel Package: auto-dimming interior rearview mirror with outside temperature and compass display, and driver and passenger map lights	—	○	○
Warning chimes for headlamps on, key in ignition, parking brake on and turn signal left on	●	●	●
Safety and Security			
Anti-lock brakes with Traction Control	○	○	○
Halogen headlamps	●	●	●
Automatic light control	—	—	●
Battery run-down protection for interior and cargo area lighting	●	●	●
Child-security rear-door locks	●	●	●
Daytime running lamps	●	●	●
Dual-stage driver and front passenger air bags	●	●	●
Emergency trunk release handle	●	●	●
Engine-immobilizing theft-deterrent feature	●	●	●
Foglamps	—	—	●
Head Curtain Side Air Bags	○	○	○
Height-adjustable front safety belts with pretensioners and energy-absorbing retractors	●	●	●
Lower Anchorages and Top Tethers for Children (LATCH) in all rear seating positions	●	●	●
OnStar System with one-year Safe & Sound Service Plan ³	—	○	○
Secure trunk feature with locking seatbacks and interior remote trunk release disable	●	●	●
Entertainment Systems			
AM/ FM stereo with 4 extended-range speakers	●	—	—
Radio 1: CD player with AM / FM stereo and 4 extended-range speakers	○	●	—
Radio 2: Radio 2: Single CD/MP3 player with AM / FM stereo and 4 coaxial speakers	○	○	●
Radio 3: Radio 3: 6-disc, in-dash CD /MP3 player with AM / FM stereo and 4 coaxial speakers	—	○	○
Saturn Advanced Audio System: 160-watt external amplifier and 6 premium speakers ⁴	—	○	○

● = standard ○ = available — = not available

Meet John Master Of The Hairpin Turn Weber.

Meet His Sport-tuned ION•3 Quad Coupe.



140-hp, 2.2-litre, 4-cylinder Ecotec engine. Dual rear access doors. Independent front suspension with semi-independent torsion-beam rear suspension. CD/MP3 player. Power windows, door locks and exterior mirrors. Air conditioning with dust and pollen filter. Remote keyless entry. Cruise control. Fold-flat front passenger seat. Height-adjustable driver's seat with lumbar support. Dent- and ding-resistant polymer side panels. 16-inch alloy wheels.

The ION-3 quad coupe with standard 16-inch alloy wheels. Shown here in Pacific Blue, and at saturncanada.com/quadcoupe in every available colour.





Fold down the quad coupe's split rear seatbacks and the fold-flat front passenger seat and suddenly, you have an eight-foot-long space to fill.

The sporty lines of a coupe, the pragmatic heart of a sedan. Invite your friends, use it as a workhorse—utility is the secret to the quad coupe's success. The rear doors offer back seat accessibility, while split folding rear seatbacks and a fold-flat front passenger seat make quick work of hauling longer cargo. But functionality isn't the only thing that makes the quad coupe stand out. A short list of the many features that come standard: power door locks, CD player, height-adjustable driver's seat, engine oil-life monitor, and air conditioning with dust and pollen filter. Check saturncanada.com/quadcoupe for all the amenities.

Cargo and load capacity limited by weight and distribution.
ION[®]3 quad coupe shown with Black Leather Package.



Start looking for hills to climb, curves to tackle, highways to conquer. ION engineers set out to make driving fun again, so they took a 140-horsepower 4-cylinder Ecotec engine and matched it to a 5-speed Getrag manual transmission. A smooth-shifting 4-speed automatic transmission is also available as an option. Needless to say, we were also in search of a fluid ride and excellent road feel, so we equipped the ION with independent front suspension and semi-independent torsion-beam rear suspension, which allows the wheels to react with precision to varying road conditions. For those with a taste for an even tighter ride, the strut valves on the ION•3 have been sport-tuned, paired with larger stabilizer bars, and equipped with road-responsive hydraulic bushings.



In a world populated by wayward golf balls and badly behaved shopping carts, polymer panels have spared many Saturn owners the heartache of seeing their car sullied by dents and dings.



The ION is equipped with a trunk-mounted battery. It's an uncommon configuration that optimizes vehicle weight distribution and contributes to the ION's impressive handling. As an added bonus, its location away from engine heat also helps to extend battery life.





The ION Red Line, shown in Black Onyx with aero-wing spoiler, which is available as a Retailer-installed accessory.

2005 ION Red Line

RELAY





The Nürburgring. It's one of the most daunting and most famous test tracks in the world. It's a place where zero-to-sixty times are just the beginning. And it's where we tested the ride, handling and overall performance of the ION Red Line, by putting it through its paces on hairpin turns, steep inclines and long straightaways.



It may not chase a checkered flag, but the ION Red Line has oil-jet-cooled pistons—as do Formula One™ cars. They're specifically designed to keep performance engines working at maximum capacity.

Keep your eye on the stopwatch. Designed by engineers who know their way around the racing circuit, the ION Red Line has all the hallmarks of a performance car. The low-profile, Z-rated tires are coupled with 17-inch forged alloy wheels, which are lightweight and strong. Leather-trimmed RECARO Sport Seats offer substantial lateral support for a track-inspired ride. The carefully sculpted aero-wing spoiler is an available accessory that combines aggressive good looks with the physics of aerodynamics. Under the hood, the 205-horsepower engine is supercharged, intercooled, and paired with a heavy-duty five-speed manual transmission with close-ratio gearing. The suspension is performance-tuned and equipped with progressive-rate springs that stiffen as you enter a curve to cut down on body lean. With 200 ft. lbs. of torque, a zero-to-sixty time of 6.3 seconds, and the cornering power to generate 0.85 lateral Gs, this is a car you can miss in the blink of an eye.



ION Quad Coupe Exterior Colours

Visit saturncanada.com/quadcoupe. It's the closest you can come to kicking the tires without leaving home.



Polar White



Black Onyx



Silver Nickel



Chili Pepper Red

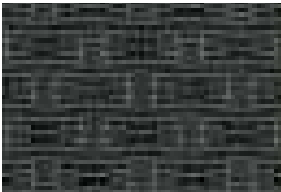


Electric Lime¹

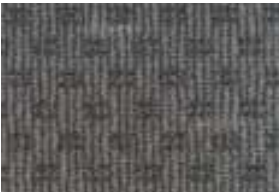


Pacific Blue

ION Quad Coupe Interior Colours



Black Cloth (ION-2)



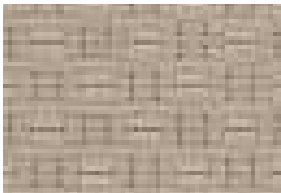
Black Cloth (ION-3)



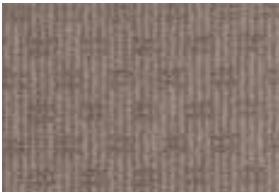
Black Leather (ION-3)



Blue Weave Cloth (Red Line)



Tan Cloth (ION-2)



Tan Cloth (ION-3)



Tan Leather (ION-3)

ION Quad Coupe Colour Combinations

Exterior Paint	Cloth (ION-2)	Cloth (ION-3)	Available Leather Package (ION-3)	Leather Package/ Cloth (Red Line)
Polar White*	Black, Tan	Black, Tan	Black, Tan	—
Black Onyx	Black, Tan	Black, Tan	Black, Tan	Black / Blue Weave
Silver Nickel	Black	Black	Black	Black / Blue Weave
Chili Pepper Red	Black, Tan	Black, Tan	Black, Tan	Black / Blue Weave
Electric Lime ¹	Black	Black	Black	—
Pacific Blue	Black, Tan	Black, Tan	Black, Tan	Black / Blue Weave

ION Quad Coupe Wheels



15" Standard Cover (ION-2)



15" Available Alloy (ION-2)



16" Standard Alloy (Standard on ION-3) (Available on ION-2)



17" Standard Forged Alloy (Red Line)

ION Quad Coupe Specifications

Engine and Transmission	ION-2	ION-3	Red Line
Engine	2.2-litre, DOHC, 16-valve, inline-4, twin balance shafts 140 @ 5,800 rpm 145 @ 4,400 rpm 5-speed manual 4-speed automatic	2.2-litre, DOHC, 16-valve, inline-4, twin balance shafts 140 @ 5,800 rpm 145 @ 4,400 rpm 5-speed manual 4-speed automatic	2.0-litre, supercharged, intercooled, 16-valve 205 @ 5,600 rpm 200 @ 4,400 rpm 5-speed manual —
Horsepower Torque (ft. lbs.) Transmission (standard) Transmission (available)			
Chassis			
Drivetrain	Front-engine / front-wheel drive		
Body construction	Steel spaceframe with front and rear crumple zones and side-impact protection		
Suspension	Independent front and semi-independent torsion-beam rear with front and rear stabilizer bars (ION-2/ION-3) Sport-tuned strut valves and larger diameter stabilizer bars (ION-3) Performance-tuned springs, shocks, bushings and stabilizer bars (Red Line) Electric power with variable assist, tuned for each model Power-assisted ventilated front disc / rear drum (ION-2/ION-3)		
Steering			
Brakes			
Weights and Capacities			
Curb weight, manual / automatic kg (lbs.)	1,263 / 1,290 (2,784 / 2,843)	1,276 / 1,302 (2,812 / 2,871)	1,330 / — (2,933 / —)
Passenger volume litres (cu. ft.)	2,470 (87.3)	2,470 (87.3)	2,470 (87.3)
Cargo-area volume litres (cu. ft.) ²	401 (14.2)	401 (14.2)	401 (14.2)
Fuel capacity approx. litres (imp. gal.)	50 (11.2)	50 (11.2)	50 (11.2)
Passenger seating	4	4	4
Fuel Consumption City / Hwy (L / 100 km)			
Manual transmission	9.5 / 6.1	9.5 / 6.1	10.2 / 7.4
Automatic transmission	9.9 / 6.6	9.9 / 6.6	—
Exterior Dimensions mm (in.)			
Length	4,699 (185.0)	4,699 (185.0)	4,699 (185.0)
Wheelbase	2,621 (103.2)	2,621 (103.2)	2,621 (103.5)
Width	1,725 (67.9)	1,725 (67.9)	1,725 (67.9)
Height	1,422 (56.0)	1,422 (56.0)	1,422 (56.0)
Track, front / rear	1,494 / 1,483 (58.8 / 58.4)	1,494 / 1,483 (58.8 / 58.4)	1,494 / 1,483 (58.8 / 58.4)
Interior Dimensions front / rear mm (in.)			
Legroom	1,072 / 831 (42.2 / 32.7)	1,072 / 831 (42.2 / 32.7)	1,072 / 831 (42.2 / 32.7)
Headroom	988 / 927 (38.9 / 36.5)	988 / 927 (38.9 / 36.5)	988 / 927 (38.9 / 36.5)
Shoulder room	1,372 / 1,295 (54.0 / 51.0)	1,372 / 1,295 (54.0 / 51.0)	1,372 / 1,295 (54.0 / 51.0)
Hip room	1,255 / 1,227 (49.4 / 48.3)	1,255 / 1,227 (49.4 / 48.3)	1,255 / 1,227 (49.4 / 48.3)

ION Quad Coupe Features and Options

Comfort and Convenience	ION-2	ION-3	Red Line
60 / 40-split folding rear seatbacks	●	●	●
Adjustable steering column	●	●	●
Air conditioning with dust and pollen filter	○	●	●
Dent / corrosion-resistant bodyside panels	●	●	●
Dual 12-volt power outlets	●	●	●
Dual visor vanity mirrors	●	●	●
Flat-towable behind recreational vehicle	●	●	●
Floor mats, carpeted front and rear	●	●	●
Fold-flat front passenger seatback with scuff-resistant back	●	●	—
Console – front console with adjustable armrest, enclosed storage and dual front and rear cupholders	●	●	—
Console – front console with adjustable armrest, open storage and dual front and rear cupholders	—	—	●
Height-adjustable driver's seat (ION-3 also includes manual lumbar adjustment)	●	●	●
LCD message center including low-fuel indicator and oil-life monitor	●	●	●
Leather Package: leather seating surfaces, leather wrapped steering wheel and automatic shift knob	—	●	●
Leather-surfaced RECARO Sport Seats and leather wrapped steering wheel	—	—	●
Power door locks with anti-lockout, delayed locking and programmable lock / unlock	●	●	●
Convenience Package: cruise control, power windows, power exterior mirrors, remote keyless entry and alarm	○	●	●
Power sunroof ³	—	○	○
Rear spoiler	—	○	●
Rear window defogger with manual shutoff and timed reset	●	●	●
Storage compartments: three bins in instrument panel, front and rear door map pockets, and glove box	●	●	●
Travel Package: auto-dimming interior rearview mirror with outside temperature and compass display, and driver and passenger map lights	○	○	—
Warning chimes for headlamps on, key in ignition, parking brake on and turn signal left on	●	●	●
Safety and Security			
Anti-lock brakes (ION-2 and ION-3 also include Traction Control)	○	○	●
Halogen headlamps	●	●	●
Automatic light control	—	●	—
Battery run-down protection for interior and cargo area lighting	●	●	●
Daytime running lamps	●	●	●
Dual-stage driver and front passenger air bags	●	●	●
Emergency trunk release handle	●	●	●
Engine-immobilizing theft-deterrent feature	●	●	●
Foglamps	—	●	—
Front safety belts with pretensioners and energy-absorbing retractors	●	●	●
Head Curtain Side Air Bags	○	○	○
Lower Anchorages and Top Tethers for Children (LATCH) in rear seating positions	●	●	●
OnStar System with one-year Safe & Sound Service Plan ⁴	○	○	—
Secure trunk feature with locking seatbacks and interior remote trunk release disable	○	○	—
Entertainment Systems			
Radio 2: Single CD / MP3 player with AM / FM stereo and 4 coaxial speakers	○	●	●
Radio 3: 6-disc, in-dash CD / MP3 player with AM / FM stereo and 4 coaxial speakers	○	○	○
Saturn Advanced Audio System: 160-watt external amplifier and 6 premium speakers ⁵	○	○	○

● = standard ○ = available — = not available

¹Not available on Red Line Quad Coupe. ²Cargo and load capacity limited by weight and distribution. ³Requires Convenience Package. ⁴Requires Radio 2 or Radio 3 and Travel Package. Service Contract required. Includes 1 year Safe & Sound Plan. OnStar services require vehicle electrical system and wireless service to be available and operating for features to function properly. OnStar relies on existing emergency service providers as well as wireless and satellite technologies and is subject to their limitations. Due to the transition of the wireless industry from analog to digital technology, as of January 1, 2008, OnStar plans to offer service only through equipment that operates on the digital network, which may require the purchase of a system upgrade. Call 1-888-4ONSTAR (1-888-466-7827), see your OnStar Owner's Guide, or visit www.onstarcanada.com for system information and details. ⁵Requires Radio 2 or Radio 3 and Convenience Package.

Meet Tanner Are We There Yet Shea.



Meet His Ingeniously Designed Seven-passenger RELAY.



200-hp, 3.5-litre, V-6 engine. Available with front-wheel drive or VersaTrak all-wheel drive. OnStar with one-year Safe & Sound Service Plan.¹ DVD entertainment system. CD/MP3 player with 8 speakers and rear-seat audio controls. Remote keyless entry. Dual sliding doors. 50/50-split third row seats. Overhead rail storage system. Foldaway trays. Steel safety cage construction with front and rear crumple zones. Four-wheel anti-lock disc brakes. Dual-stage front air bags with Passenger Sensing System.² Automatic headlamps. Saturn Security System.

¹See inside back cover for important information about OnStar. ²See inside back cover for important information about air bags, including a note about child safety.

The all-new RELAY-3 shown in Silver Pearl. To see it in every available colour, and to build and price your own RELAY, visit saturncanada.com/relay.





Let there be light. Saturn's Harmony and Human Factors Group spent many hours in a darkened room, honing in on the ideal angles and illumination levels for the lighting throughout the RELAY.

The family car grows up. Style is what separates kid-friendly vehicles from family-friendly vehicles. Thankfully, the RELAY is proof that form and function can attractively coexist. You'll find an SUV-inspired exterior and an interior that's more European Modern than Preschool Modern, with clean backlit gauges, chrome surrounds, and a seamlessly integrated dash. With the RELAY•3, the available Power Package adds extra luxury to the mix, with dual power sliding doors and ultrasonic rear parking assist. Also available: heated front seats, 6-way power front passenger seat and leather-surfaced first and second row seats. To see all your choices, check the specifications page or visit us at saturncanada.com/relay.

The RELAY•3 in this brochure is shown with available features.





Saturn engineers spend tens of thousands of kilometres in the driver and passenger seats. It's called comfort testing, and it's one of the ways we were able to design third row seats that are as comfortable for 6-foot adults as they are for 3-foot kids.

It's the family utility vehicle from Saturn. For everyone who is all too familiar with the challenges of getting the family from one place to another, we offer the RELAY as the ideal traveling companion. It seats seven comfortably, and has the added allure of a 6-way power driver's seat, first and second row captain's chairs with foldaway trays on the RELAY•3, and split folding third row seats. Best of all, the second and third row seats can be folded and reconfigured in seconds, which makes the RELAY the one family member that always does its chores without dawdling.



- A. Hideaway storage bins in the rear cargo area, standard on the RELAY•3, available on the RELAY•2.
- B. DVD entertainment system, available.
- C. Overhead rail storage system, standard; shown with 2 additional bins, available.
- D. Seatback storage, standard with captain's chairs.



A place for everything and everything in its place. Parents know that every kid wants a space to call their own. That's why we designed an abundance of storage bins, cupholders and cargo spaces for the RELAY's interior. We also looked for ways to put storage in unexpected places, like up and out of the way. The RELAY's overhead storage system can be customized with available bins that come with a variety of inserts, like a first-aid kit, CD/DVD holder or flashlights. Also overhead: the standard OnStar System¹ and available DVD player, as well as the RELAY•3's universal garage door opener. Available hideaway bins in the floor of the rear cargo area are compartmentalized to keep wet umbrellas and muddy boots separate from jackets, toys and groceries. Equally handy is the available 115-volt power outlet, which works like a household electrical outlet and allows you to power small appliances like a laptop computer, video game console or television.

Cargo and load capacity limited by weight and distribution.
Simulated DVD picture.

¹OnStar System includes one-year Safe & Sound Service Plan. See inside back cover for additional information about OnStar.



We know that skinned knees and bee stings come with the proverbial parental territory; we also know that bandages and sting-relief medicine tend to go astray. Which is why one of the RELAY's available overhead storage bins comes with its own first-aid kit.





To take the bite out of those please-don't-make-me-get-out-of-bed mornings, remote engine start is available on all RELAY models.



Auto Level Control adjusts the rear shock absorbers to account for added tow weight. If that weren't handy enough, it comes with an air compressor and a selection of tools for inflating things like beach toys and air mattresses. Available on front-wheel-drive models; standard on the all-wheel-drive model.



Saturn engineers know what really matters. True story: When road-testing the RELAY's safety systems, Saturn engineers emulate the driving patterns of their own family members. Husbands, wives, parents, and sons and daughters of all ages keep the Saturn team focused on our collective goal: high overall safety performance, and a vehicle that will make any family feel safe. And so, the RELAY comes with a comprehensive list of safety features, including 4-wheel anti-lock disc brakes, standard; automatic headlamps, standard; dual-stage front air bags¹ with a Passenger Sensing System that detects small or out-of-position occupants and turns the air bag on or off accordingly, standard; and OnStar with one-year Safe & Sound Service Plan,² also standard. The available StabiliTrak vehicle stability enhancement system uses sensors to

continuously monitor steering angle, individual wheel speed, brake pressure, lateral acceleration and yaw rate. The information is then used to compare the direction the driver is steering with the vehicle's actual path, so the system can make the necessary corrections—often without the driver knowing he or she needed assistance. As for the power to pass, change lanes and make quick maneuvers, the RELAY is equipped with a 200-horsepower V-6 engine with electronic throttle control. For an even longer list of mechanical and safety features, visit saturncanada.com/relay.

¹See inside back cover for important information about air bags, including a note about child safety.

²See inside back cover for important information about OnStar.

RELAY Exterior Colours

So many colours, so little time. The fastest way to see the RELAY in every available hue is to visit saturncanada.com/relay.



RELAY Interior Colours



RELAY Colour Combinations

Exterior Paint	Cloth	Available Leather Package¹
Polar White	Grey, Cashmere	Grey, Cashmere
Silver Pearl	Grey, Cashmere	Grey, Cashmere
Berry Red	Grey, Cashmere	Grey, Cashmere
Golden Cashmere	Cashmere	Cashmere
Coastal Grey	Grey, Cashmere	Grey, Cashmere
Bronze Mist	Cashmere	Cashmere
Midnight Blue	Grey, Cashmere	Grey, Cashmere
Forest Green	Grey, Cashmere	Grey, Cashmere

RELAY Wheels



¹First and second row seats only. ²Cargo and load capacity limited by weight and distribution. ³Maximum trailer ratings are calculated assuming a properly equipped vehicle, which includes the available Trailing Provisions Package. The weight of other optional equipment, passengers and cargo will reduce the maximum trailer weight your vehicle can tow. See your Retailer for details. ⁴Requires Safety Package. ⁵Requires Touring Package. ⁶See inside back cover for important information about air bags, including a note about child safety. ⁷See inside back cover for important information about OnStar. ⁸Toy box not available on RELAY-3. ⁹Interim availability.

RELAY Specifications

Engine and Transmission	RELAY-2 FWD	RELAY-3 FWD	RELAY-3 AWD
Engine	3.5-litre, OHV, V-6	3.5-litre, OHV, V-6	3.5-litre, OHV, V-6
Horsepower	200 @ 5,200 rpm	200 @ 5,200 rpm	200 @ 5,200 rpm
Torque (ft. lbs.)	220 @ 4,400 rpm	220 @ 4,400 rpm	220 @ 4,400 rpm
Transmission	4-speed automatic	4-speed automatic	4-speed automatic
Chassis			
Drivetrain	Front-engine / front-wheel drive (FWD); Front-engine / all-wheel drive (AWD)		
Body construction	Steel safety cage with front and rear crumple zones and side-impact protection		
Suspension	Front independent MacPherson struts with stabilizer bar; rear semi-independent twist beam axle with stabilizer bar (FWD) Front independent MacPherson struts with stabilizer bar; rear independent double wishbone with isolated cradle and stabilizer bar (AWD)		
Steering	Power rack-and-pinion		
Brakes	Four-wheel anti-lock disc		
Weights and Capacities			
Curb weight kg (lbs.)	1,938 (4,272)	1,946 (4,290)	2,110 (4,651)
Passenger volume litres (cu. ft.)	4,174 (147.4)	4,174 (147.4)	4,174 (147.4)
Cargo-area volume²			
behind third row seats litres (cu. ft.)	762 (26.9)	762 (26.9)	762 (26.9)
with third row seats removed litres (cu. ft.)	2,098 (74.1)	2,098 (74.1)	2,098 (74.1)
with second and third row seats removed litres (cu. ft.)	3,865 (136.5)	3,865 (136.5)	3,865 (136.5)
Fuel capacity approx. litres (imp. gal.)	95 (20.9)	95 (20.9)	95 (20.9)
Towing capacity max. kg (lbs.)³	1,588 (3,500)	1,588 (3,500)	1,588 (3,500)
Passenger seating	7	7	7
Fuel Consumption City / Hwy (L / 100 km)			
Information not available at time of printing.			
Exterior Dimensions mm (in.)			
Length	6,204 (204.9)	6,204 (204.9)	6,204 (204.9)
Wheelbase	3,076 (121.1)	3,076 (121.1)	3,076 (121.1)
Width	1,829 (72.0)	1,829 (72.0)	1,829 (72.0)
Height	1,831 (72.1)	1,763 (69.4)	1,763 (69.4)
Track, front/rear	1,585/1,599 (62.4 / 62.9)	1,570/1,608 (61.8/63.3)	1,585/1,590 (62.4/62.6)
Interior Dimensions first / second / third row mm (in.)			
Legroom	1,013/990/932 (39.9/39.0/36.7)	1,013/990/932 (39.9/39.0/36.7)	1,013/990/932 (39.9/39.0/36.7)
Headroom	1,013/998/988 (39.9/39.3/38.9)	1,013/998/988 (39.9/39.3/38.9)	1,013/998/988 (39.9/39.3/38.9)
Shoulder room	1,519/1,572/1,514 (59.8/61.9/59.6)	1,519/1,572/1,514 (59.8/61.9/59.6)	1,519/1,572/1,514 (59.8/61.9/59.6)

RELAY Features and Options

Comfort and Convenience	RELAY-2 FWD	RELAY-3 FWD	RELAY-3 AWD
50/ 50-split folding third row bench seat	●	●	●
Air conditioning with dust and pollen filter	●	●	●
Convenience Package: dual illuminated visor vanity mirrors, power third row vent windows, hideaway rear storage bins and Saturn Security System	○	○	○
Driver and front passenger captain's chairs with seatback storage and foldaway tray	●	●	●
Driver information center with outside temperature and compass display and personalization capabilities	—	●	●
Exterior aluminum roof rails	○	●	●
Front lower center console storage area and 12-volt power outlet	●	●	●
Leather-trimmed first and second row seats, heated front seats and 6-way power passenger seat⁴	—	○	○
Leather-wrapped steering wheel with audio controls	—	●	●
Overhead rail storage system	●	●	●
Overhead rail storage bins (2) with CD/DVD case and first-aid kit	○	○	○
Power Package: dual power sliding doors and ultrasonic rear parking assist	—	○	○
Power windows, door locks and heated exterior mirrors; remote keyless entry; cruise control	●	●	●
Rear air conditioning with separate rear climate controls	○	●	●
Rear washer/wiper and defogger	●	●	●
Remote engine start	○	●	●
Second row fold-flat and tumbling bucket seats	●	—	—
Second row fold-flat captain chairs with folding armrests, foldaway tray and seatback storage	—	●	●
6-way power driver's seat	○	●	●
Touring Package: sport-tuned suspension with front stabilizer bar, specifically-tuned shock valving, touring tires, inflator tool kit, Automatic Level Control and auxiliary 12-volt power outlet	○	○	—
Trailerling Provisions: heavy-duty cooling system, trailer harness and 125-amp generator ⁵	○	○	○
Universal garage door opener and overhead storage bin with sunglass insert	—	●	●
Safety and Security			
Automatic headlamps and daytime running lamps	●	●	●
Child-security rear-door locks	●	●	●
Dual-stage front air bags with Passenger Sensing System ⁶	●	●	●
Height-adjustable front safety belts with pretensioners and energy-absorbing retractors	●	●	●
Lower Anchorages and Top Tethers for Children (LATCH) in second row seating positions	●	●	●
OnStar System with one-year Safe & Sound Service Plan ⁷	●	●	●
Safety Package: front seat-mounted side-impact air bags (FWD models also include Traction Control) ⁶	○	○	●
StabiliTrak vehicle stability enhancement system	○	○	—
Three-point safety belts in all seating positions	●	●	●
Entertainment Systems			
CD/MP3 player with AM/FM stereo and 8 speakers	●	●	●
DVD entertainment system with seven-inch, flip-down LCD screen and remote control, rear seat audio controls, auxiliary audio/video jacks and dual headphone jacks	○	○	○
Entertainment Package: 115-volt power outlet and second row toy box ⁸	○	—	—
GPS Navigation System: 6.5-inch in-dash touch screen and CD/MP3 player with 8 speakers ⁹	—	○	○
Mobile Digital Media powered by Phat Noise ⁹	○	○	○
6-disc, in-dash CD/MP3 player with AM/FM stereo and 8 speakers	○	○	○

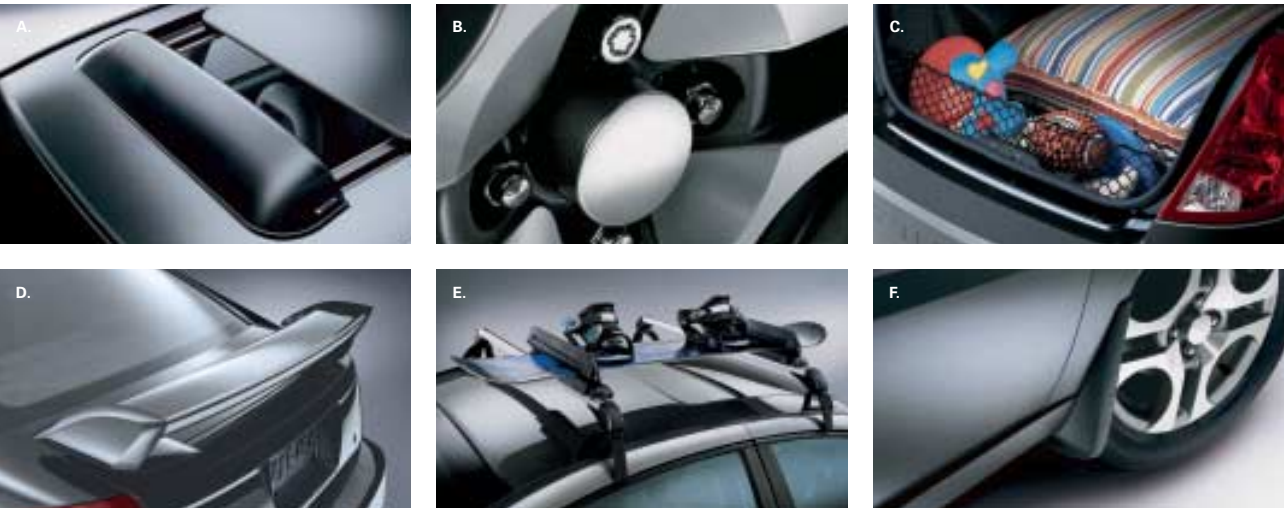
● = standard ○ = available — = not available

VUE Accessories



Among the 40-plus Retailer-installed accessories available on the VUE: **A.** Rear spoiler. **B.** Trailer hitch, ball mount and ball. **C.** Front grille guard. Visit saturncanada.com/vue for a complete list of accessories, including the full range of roof attachments available for carrying bikes, snowboards, surfboards and more.

ION Accessories



There are over 30 Retailer-installed accessories available for the ION sedan and quad coupe, including: **A.** Sunroof wind deflector. **B.** Wheel locks. **C.** Cargo net. **D.** Aero-wing spoiler. **E.** Roof rack with ski/snowboard attachment. **F.** Splash guards. A complete list can be found at saturncanada.com.

RELAY Accessories



Just a few of the Retailer-installed accessories available on the RELAY: **A.** Trailer hitch and bike attachment. **B.** Overhead storage bin with flashlight insert. **C.** Crossbars (available Winter 2004) with cargo box. **D.** Toy box. **E.** Sit n' Lift™ Mobility Assistance. **F.** All-weather floor mats. Visit saturncanada.com/relay for all the details.



Important words about this catalog

We have tried to make this catalog comprehensive and factual. We reserve the right, however, to make changes at any time, without notice, in prices, colours, materials, equipment, specifications, models, and availability. Since some information may have been updated since the time of printing, please check with your Saturn Retailer for complete details. Saturn reserves the right to lengthen or shorten the model year for any product for any reason or to start and end model years at different times.

A note about child safety

Always use safety belts and proper child restraints. Even in vehicles equipped with air bags and the Passenger Sensing System, children are safer when properly secured in a rear seat. Never place a rear-facing infant restraint in the front seat of any vehicle equipped with an active air bag. See your vehicle Owner's Handbook and child-safety seat instructions for more information.

Saturn Warranty

Our Saturn New Car Warranty does precisely what the name implies – covers virtually everything on the vehicle from the front bumper to the rear for the first 3 years or 60,000 Kilometres, whichever comes first. (Except for the tires, which are covered separately by Firestone). Upon expiration of the 3 year or 60,000 Kilometre period, the vehicle's powertrain components will continue to be covered by the New Special Powertrain Component Coverage for up to 5 years or 100,000 Kilometres, whichever comes first. There are no deductibles and the warranty covers the cost of any repairs to correct any vehicle defect related to materials or workmanship during the warranty period. Maintenance and wear items are covered up to their first scheduled inspection or replacement period. In the event the vehicle is sold, the balance of the warranty remains in effect for subsequent owners at no additional cost. Roadside Assistance and Rental Allowance are not included in the Special Powertrain Component Coverage. If more comprehensive coverage is desired, Saturn offers an available, specially priced Saturn Protection Plan which includes Saturn Roadside Assistance and Rental Allowance benefits. If you want to know more about the Saturn New Car Warranty, or Saturn Protection Plan, please refer to the warranty and owner assistance booklet inside the Owner's Handbook or see your Saturn Retailer for details.

Updated Service Information

Saturn Retailers receive useful service bulletins about Saturn products. See your Retailer for more information.

Assembly

Saturn vehicles and their components are assembled or produced by different operating units of General Motors, its subsidiaries or suppliers to GM worldwide. We sometimes find it necessary to produce Saturn vehicles with different or differently sourced components than originally scheduled. Since some options may be unavailable when your vehicle is assembled, we suggest that you verify your vehicle includes the equipment you ordered, or, if there are changes, that they are acceptable to you.

Engines

Saturn products are equipped with engines produced by GM Powertrain or other suppliers to GM worldwide. The engines in Saturn products may also be used in other GM makes and models.

Vehicle Exchange Program

Within the first 30 days or 2,500 kilometres of delivery, whichever comes first, the original purchaser may exchange his or her Saturn vehicle if not completely satisfied. In the event that an owner returns his or her vehicle, he or she will exchange it for another 2004 Saturn vehicle. See Retailer for limitations and restrictions. All the same factory-supported initiatives will be included on the exchange vehicle that were in the original vehicle. The vehicle must be returned in the condition in which it was delivered, without damage or excessive wear and tear. If non-warranty repairs equal to or greater than \$500 have been performed or are necessary, the vehicle is not eligible to be returned. If less than \$500, the damage must be repaired or the estimate deducted from the credit toward the exchange vehicle.

OnStar

*Service Contract required. Includes 1 year Safe & Sound Plan. OnStar services require vehicle electrical system and wireless service to be available and operating for features to function properly. OnStar relies on existing emergency service providers as well as wireless and satellite technologies and is subject to their limitations. Due to the transition of the wireless industry from analog to digital technology, as of January 1, 2008, OnStar plans to offer service only through equipment that operates on the digital network, which may require the purchase of a system upgrade. Call 1-888-4ONSTAR (1-888-466-7827), see your OnStar Owner's Guide, or visit www.onstarcanada.com for system information and details.