

THE NEW

Chrysler

**180
HORSEPOWER**



Savanna

Specifications

BODY STYLES . . . 6 Pass. Sedan; Club Coupe; 8 Pass. Sedan; Town & Country Wagon; and Ambulance.

ENGINE . . . FirePower High Compression V-8, Bore 3-13/16 in. Stroke 3 3/4 in. Piston Displacement 331.1 cu. in. Compression Ratio 7.5 to 1. Brake Horsepower 180 at 4000 rpm. Torque 312 ft.-lbs. at 2000 rpm. Hemispherical Combustion Chamber. 5 rings per piston. Full Pressure Lubrication. Exhaust Valve Seat Inserts. Waterproof Ignition. Full-Flow Oil Filter. Water Jacket Cooling. Twin Concentric Valve Springs. Resistor-type Spark Plugs. Crankcase Ventilation. Superfinished Parts. Double Breaker Distributor. Dual throat Carburetor. Pressure Vent Radiator Cap.

FUEL SYSTEM . . . Dual throat Downdraft Carburetor with automatic choke. Oilite Fuel Filter element in gasoline tank. Gas tank capacity, 17 gallons.

COOLING SYSTEM . . . Thermostatic by-pass control. Four-bladed fan. Full-length water jackets. Fin and tube radiator case. Pressure Vent radiator cap. Cooling capacity 25 quarts.

CLUTCH . . . Single plate, dry, ventilated with two molded, woven asbestos facings. 9 1/2 inches diameter.

ELECTRICAL SYSTEM . . . High capacity generator, 50 amps. 19-plate, 6-volt battery, 135 amp. hr. capacity. Waterproof ignition. 14mm. Resistor-type spark plugs. Back-up lights. Directional Signals, front and rear. Ignition key starter switch. Solenoid engaged starter. Sealed Beam Headlights.

FLUID-MATIC DRIVE . . . Hydraulically operated controlled type automatic transmission with glycol Fluid Drive. Four forward speeds and reverse. All forward gears are synchronized. Ratios: 3.57 to 1 . . . 2.04 to 1 . . . 1.75 to 1 . . . 1.00 to 1 . . . with 3.99 to 1 for reverse. Capacity, 3 pints. Fluid Drive unit permanently sealed at the factory.

DRIVE . . . Hotchkiss type, through rear springs. Hypoid rear axle, semi-floating, with tapered roller bearings. Rear axle ratio, 3.73 to 1.

FRONT SUSPENSION . . . Independent front suspension with Amola steel helical coil springs. Oriflow Shock Absorbers. Four rubber limit bumpers. Rubber-bushed torsion rod stabilizer.

REAR SUSPENSION . . . Semi-elliptic springs with grooved and tapered leaves. Metal Spring Covers. Straddle mounted Oriflow Shock Absorbers.

FRAME . . . Double channel, welded box type, four cross members.

STEERING . . . Center-arm steering. Ratio 18.2 to 1; 20.4 to 1 on 8 passenger body types. Steering wheel diameter 18 in. Hydraguide Power Steering available at extra cost when production permits.

BRAKES . . . Chrysler Safe-Guard Power Brakes, Hydraulic, 12 inches diameter, internal expanding, with Cyclebonded brake linings. Power braking unit, vacuum operated. Parking Brake—Chrysler Easy-Lock, independent, internal expanding, located on propeller shaft at rear of transmission.

WHEELS and TIRES . . . Safety Rim Wheels, 15 x 5.50, with 4 ply Super-cushion Tires, size 8.00 x 15. White sidewall tires not available. Wheel covers standard equipment.

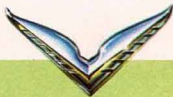
WHEELBASE . . . 125 1/2 inches on 6 Pass. Sedan, Club Coupe, Town & Country Wagon, and Ambulance; 139 1/2 inches on 8 Pass. Sedan.

TREAD . . . 6 Pass. Sedan and Club Coupe, Front, 56-5/16". Rear, 59-9/16". 8 Pass. Sedan, Front, 57 1/4". Rear, 63". Town & Country Wagon and Ambulance, Front, 57 1/4". Rear, 58-9/32".

OVERALL DIMENSIONS . . . LENGTH—6 Pass. Sedan and Club Coupe, 207 1/2 inches. Town & Country Wagon and Ambulance, 210 1/4 inches. 8 Pass. Sedan, 222 3/4 inches. WIDTH—6 Pass. Sedan and Club Coupe, Town & Country Wagon and Ambulance, 73 1/2 inches. 8 Pass. Sedan, 79 inches. HEIGHT—6 Pass. Sedan and Club Coupe, 65 1/4 inches. Town & Country Wagon and Ambulance, 67 1/4 inches. 8 Pass. Sedan, 68 3/8 inches.

All Specifications and Prices Subject to Change Without Notice.

CHRYSLER SALES DIVISION, DETROIT



Specifications

BODY STYLES . . . 6 Pass. Sedan; Club Coupe; 8 Pass. Sedan; Town & Country Wagon; and Ambulance.

ENGINE . . . FirePower High Compression V-8, Bore 3-13/16 in. Stroke 3 1/2 in. Piston Displacement 331.1 cu. in. Compression Ratio 7.5 to 1. Brake Horsepower 180 at 4000 rpm. Torque 312 ft.-lbs. at 2000 rpm. Hemispherical Combustion Chamber. 5 rings per piston. Full Pressure Lubrication. Exhaust Valve Seat Inserts. Waterproof Ignition. Full-Flow Oil Filter. Water Jacket Cooling. Twin Concentric Valve Springs. Resistor-type Spark Plugs. Crankcase Ventilation. Superfinished Parts. Double Breaker Distributor. Dual Throated Carburetor. Pressure Vent Radiator Cap.

FUEL SYSTEM . . . Dual throated Downdraft Carburetor with automatic choke. Oilite Fuel Filter element in gasoline tank. Gas tank capacity, 17 gallons.

COOLING SYSTEM . . . Thermostatic by-pass control. Four-bladed fan. Full-length water jackets. Fin and tube radiator case. Pressure Vent radiator cap. Cooling capacity 25 quarts.

CLUTCH . . . Single plate, dry, ventilated with two molded, woven asbestos facings. 9 1/2 inches diameter.

ELECTRICAL SYSTEM . . . High capacity generator, 50 amps. 19-plate, 6-volt battery, 135 amp. hr. capacity. Waterproof ignition. 14mm Resistor-type spark plugs. Back-up lights. Directional Signals, front and rear. Ignition key starter switch. Solenoid engaged starter. Sealed Beam Headlights.

FLUID-MATIC DRIVE . . . Hydraulically operated controlled type automatic transmission with 2700 Fluid Drive. Four forward speeds and reverse. All forward gears are synchronized. Ratios: 2.57 to 1 . . . 2.04 to 1 . . . 1.73 to 1 . . . 1.00 to 1 . . . with 3.99 to 1 for reverse. Capacity, 3 pints. Fluid Drive unit permanently sealed at the factory.

DRIVE . . . Hotchkiss type, through rear springs. Hypoid rear axle, semi-floating, with tapered roller bearings. Rear axle ratio, 3.73 to 1.

FRONT SUSPENSION . . . Independent front suspension with Amola steel helical coil springs. Oilflow Shock Absorbers. Four rubber limit bumpers. Rubber-bushed torsion rod stabilizer.

REAR SUSPENSION . . . Semi-elliptic springs with grooved and tapered leaves. Metal Spring Cores. Straddle mounted Oilflow Shock Absorbers.

FRAME . . . Double channel, welded box type, four cross members.

STEERING . . . Center-arm steering. Ratio 18.2 to 1; 20.4 to 1 on 8 passenger body types. Steering wheel diameter 18 in. Hydrazide Power Steering available at extra cost when production permits.

BRAKES . . . Chrysler Safe-Guard Power Brakes, Hydraulic, 12 inches diameter, internal expanding, with Cyclobonded brake linings. Power braking unit, vacuum operated. Parking Brake—Chrysler Easy-Lock, independent, internal expanding, located on propeller shaft at rear of transmission.

WHEELS and TIRES . . . Safety Rim Wheels, 15 x 5.50, with 4 ply Super-cushion Tires, size 8.00 x 15. White sidewall tires not available. Wheel covers standard equipment.

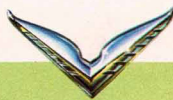
WHEELBASE . . . 125 1/2 inches on 6 Pass. Sedan, Club Coupe, Town & Country Wagon, and Ambulance; 139 1/2 inches on 8 Pass. Sedan.

TREAD . . . 6 Pass. Sedan and Club Coupe, Front, 36-5/16". Rear, 39-9/16". 8 Pass. Sedan, Front, 57 1/2". Rear, 65". Town & Country Wagon and Ambulance, Front, 57 1/2". Rear, 38-0/32".

OVERALL DIMENSIONS . . . LENGTH—6 Pass. Sedan and Club Coupe, 80 7/8 inches. Town & Country Wagon and Ambulance, 81 1/4 inches. 8 Pass. Sedan, 82 3/4 inches. WIDTH—6 Pass. Sedan and Club Coupe, Town & Country Wagon and Ambulance, 73 1/2 inches. 8 Pass. Sedan, 79 inches. HEIGHT—6 Pass. Sedan and Club Coupe, 62 1/2 inches. Town & Country Wagon and Ambulance, 67 1/4 inches. 8 Pass. Sedan, 68 1/2 inches.

All Specifications and Prices Subject to Change Without Notice.

CHRYSLER SALES DIVISION, DETROIT



CS-284—Litho in U.S.A.—7-51

THE CHRYSLER SARATOGA
THE STANDOUT FROM ANY STANDPOINT



It has the famous Chrysler Fluid-Matic speeds. It permits you to drive all day without shifting gears. It has Safety Rim Wheels, Water-Proof Ignition, Full-Flow Oil Filter, Superfinished Parts; and many other performance, comfort, and convenience features you will appreciate and enjoy. Also, available at extra cost, when production permits, is the amazing Chrysler Hydrazide Power Steering, admittedly the greatest convenience and safety feature since the introduction of the electric starter. And for those who want even faster getaway, the new Chrysler Fluid-Torque Drive may be had as extra equipment (when production permits).

Driving the Chrysler FirePower Saratoga will be a thrilling experience . . . one we believe you will enjoy immensely . . . and we will be delighted to make a Saratoga available for you at your convenience.

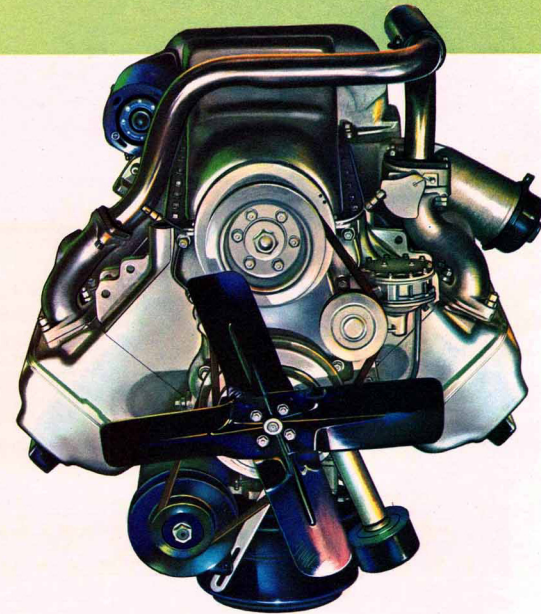
When you get behind the wheel of the Beautiful Saratoga, get set for the surprise of your life, because you have a thrilling experience coming up. Here is a car that has everything . . . performance of unbelievable flash and flexibility . . . reserve power for the pinches . . . stamina that keeps the car young . . . economical operation . . . comfort that is solid and satisfying . . . and smart lines, and luxurious interiors tailored to your taste.

It is powered by the revolutionary, new Chrysler FirePower V-8 Engine of 180 horsepower that has caused such a sensation in the motoring world this year. It is mounted on a 125 1/2-inch wheelbase chassis. It has the new Chrysler Oilflow Shock Absorbers that take the rough roads right out of your life. It has the finest power brakes that give you fast, smooth, safe braking control of your car at all



Below is illustrated the Hemispherical Combustion Chamber . . . the heart of the engine and the source of the power-producing efficiency and performance of Chrysler FirePower.

Shown on the left is the new Chrysler FirePower V-8 Engine. Developing an actual 180 horsepower at 4000 rpm, it is the most powerful engine in any passenger car in America today. More than one million miles of testing have proved its amazing efficiency, stamina, dependability, and economy. Using non-premium grade fuel, it will outperform any other car on the road. The arrangement, and perfect "breathing" of the engine give it built-in mechanical oceans that materially increase its fine performance.



THE NEW

Chrysler

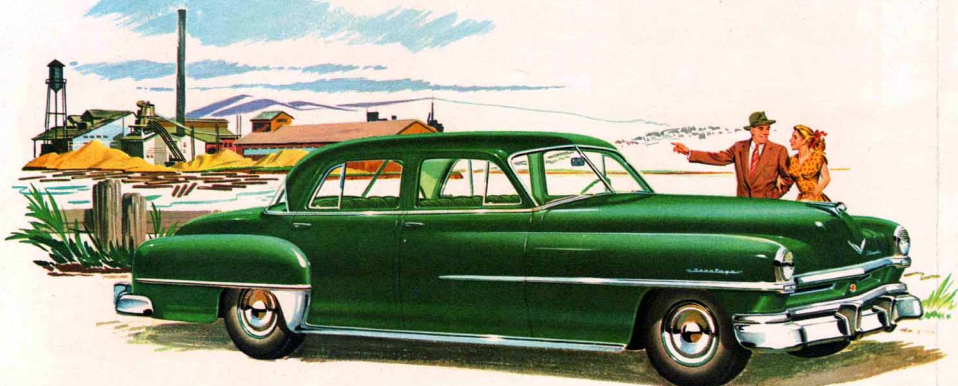
180
HORSEPOWER



Saratoga

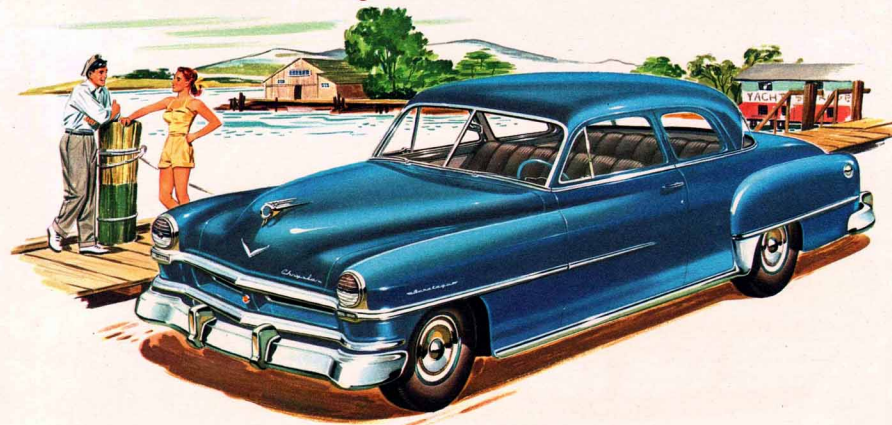
Saratoga

SIX PASSENGER SEDAN



Comfort and convenience features of the Saratoga include the CLEARBAC rear window; front and rear door ventilating wings; cowl ventilator; wide doors that open all the way; chair-height seats; Directional Signals in both front and rear; narrow corner posts; two-speed electric windshield wipers; and ignition key starter switch . . . all of which contribute to the pleasure of driving and riding in a Chrysler.

Saratoga CLUB COUPE



Chair-height seats; deep, soft cushions of airfoam rubber; seat backs at exactly the right angle and high enough to support the back and shoulders; room to stretch your legs; plenty of headroom; seats that are wide enough to accommodate three passengers in both front and rear; and fine visibility in all directions are a few of the many things you will admire and enjoy in the Saratoga.



Saratoga

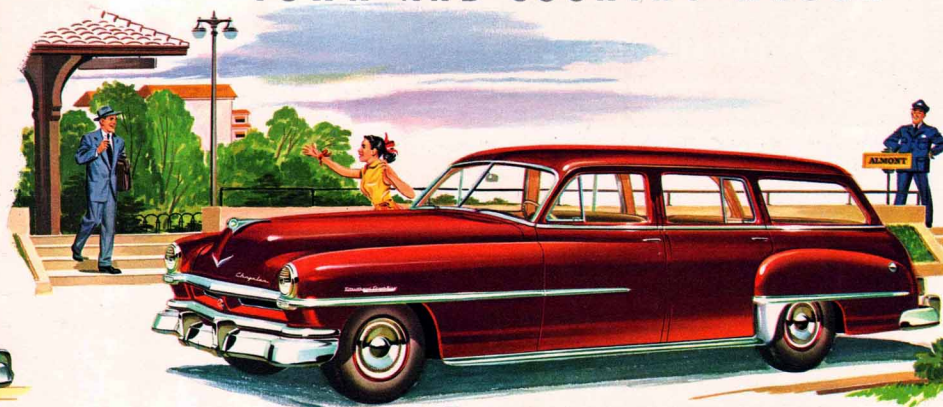
EIGHT PASSENGER SEDAN



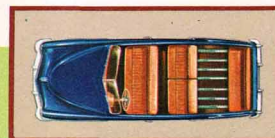
The Saratoga Eight Passenger Sedan is a luxurious car, distinctive in appearance and distinctive in performance. It is large and roomy. It has rich interiors of full-fashioned elegance and is beautifully appointed. The two auxiliary seats are wide and comfortable and can be folded forward out of the way when not in use. It is mounted on a chassis of 139½-inch wheelbase.

Saratoga

TOWN AND COUNTRY WAGON



The smartest, most beautiful and most practical station wagon on the road today is the new All-Steel Saratoga Town & Country Wagon. It will accommodate six passengers, with a special-equipment, removable seat in the rear designed especially for children. The same body style is available in an ambulance, which will carry either one or two stretchers and is equipped with siren and flasher.



Divided rear compartment seats can be folded forward (shown on right) to form a flat, unobstructed storage compartment 116 inches long from back of front seat to end of lowered tail gate. Floor space, with gate closed, is 88 inches long, 44½ inches wide and 30 inches high.

