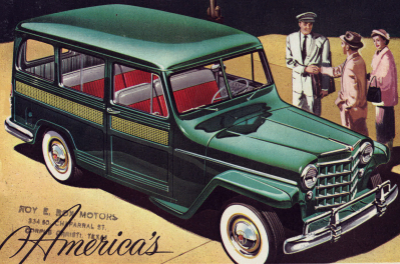


*Ready*  
for **Family**  
or **Business**



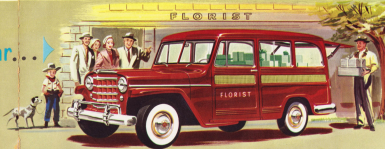
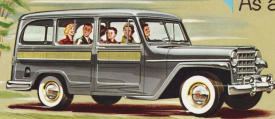
ROY E. BOY MOTORS  
334 80 CHAPARRAL ST.  
CORPUS CHRISTI, TEXAS

*America's*

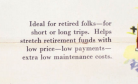
**GREATEST ALL-PURPOSE CAR!**

# Choose *Willys Deluxe Station Wagon* For Double Value... For Double Duty

As a Comfortable Family Car...  
As a Practical Utility Car...



For Sundays, you have the ideal car for taking the family or a group of neighbor children to Church or Sunday School—or for a jaunt into the country.



Ideal for retired folk—for short or long trips. Helps stretch retirement funds with low price—low payments—extra low maintenance costs.



Sportsmen like this car for hunting, fishing trips. With tallgate door, 8½' length permits sleeping bag comfort for two.



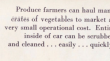
The Willys Deluxe Station Wagon is a great family car... useful in a score of ways... comfortable, safe, economical and very smart looking. It's a delight to handle on the road... in traffic... in parking. Big and roomy, it seats six adults with ample extra space for luggage. There is no better car for vacation trips. Stow in your outdoor motor sports gear, tent or sleeping bags. Tall interior of car can be washed and cleaned.

During the week this Willys Deluxe Station Wagon can be valuable in your business... can help you make money around your home, farm, ranch, resort... in service facilities and hundreds of other ways. Ruggedly designed, it can provide a huge cargo space of over 100 cubic feet. Big mileage on regular gas, and low cost of operation make this the ideal 2-purpose car. Motor easy to reach for maintenance.

Cargo area is 6 feet high, almost 5 feet wide—8½ feet long, with tallgate door flush with the floor. Offers over 100 cubic feet space with right-hand seat folded down and forward. Carries up to half-ton, with passengers.



Carpenters, plumbers, painters, photographers and service operators carry on their trades with this double-duty Station Wagon—have plenty of space for equipment.



Produce farmers can haul many crates of vegetables to market at very small operational cost. Kitchens inside of car can be scrubbed and cleaned... easily... quickly.



Traveling salesman like the Willys Deluxe Station Wagon—with room for bulky sample cases and display items, because big economy in gas and maintenance is extra important.



## "The 4-WHEEL DRIVE Station Wagon Gets You Through Where Other Cars Fail!"

CARRIES GUESTS OR PERSONNEL  
OVER TRAILS...CROSS COUNTRY  
WHERE OTHER VEHICLES  
DARE NOT GO!

When the going is really tough—too rugged for other cars, the Willys Station Wagon, with 4-wheel drive, and extra high road clearance, gets you through, even up 60% grades... helps you meet schedules and keep delivery promises.

High, narrow, sturdy fenders permit close passage between objects... make tire changes easy, simple. With 4-wheel drive, power is transmitted equally to all four wheels. They work together... pull together, to provide the extra driving traction needed to move the car through mud, sand, snow—up steep grades, over trails and rough open country impossible to most any conventional vehicle. Motor easily reached for repairs.

With 4-wheel drive for better highway travel—carries up to half-ton with passengers. Strong, broad side-gate supports 1000 lb. Has over 100 cu. ft. cargo space.



**GOES ALMOST ANYWHERE**  
Full drive on all four wheels takes the rugged Station Wagon where there are no roads—through mud, rocks, sand, snow, across washes, fields.



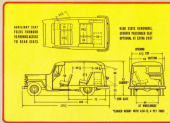
**ROOM FOR SLEEPING**  
With tallgate door flat with floor, 8½' space provides ample space for two adult sleeping bags. Heavy overhead coil light is a convenience.



**HAULS CARGO**  
Side gate opens for better highway travel—carries up to half-ton with passengers. Strong, broad side-gate supports 1000 lb. Has over 100 cu. ft. cargo space.



**CARRIES PASSENGERS**  
Seats six adults with ample luggage space. Ideal for families, vacations, picnics, outings and when far from going anywhere... irrespective of weather or roads.



Look at the many practical **Features** offered you in

*Willys DeLuxe Station Wagon*



**Seats, sides and ceiling** are covered with washable plastic-coated material. Full interior can be scrubbed and cleaned. A real feature with farmers, haulers and families with children.



**Strong tailgate** will support up to half-ton . . . has full-width piano hinge . . . lowers to level of floor . . . offers smooth extension of cargo area. Tailgate lock provides easy, positive closure.



**Comfort** for the entire family with six full-size seats—lots of head, leg and hip space. Big room inside . . . big view outside. All seats removable except the driver's.



**Engine vibration and noise** is smothered with cushions of especially designed live-rubber, carefully calibrated and placed.

**Huge cargo space** available with passenger seats removed. Over 100 cubic feet of space with right front seat folded down and forward.



**A simple turn** of the ignition Startakey starts the motor. No more foot fumbling. A feature appreciated by ladies particularly.



**New, soft contour seats** for more riding comfort—upholstered in two-tone washable plastic. Makes trips less fatiguing.



**Short wheel base, 104 inches** . . . more visibility all around . . . makes parking easy in a space only 19 feet long. Has small 35-foot turning diameter.



**Overhead dome light** above windshield handy for map reading, checking route lists—deliveries—orders—mail.



**In warm weather** upper tailgate door can be opened and locked into position for better ventilation.



**Planadyne front suspension** smooths out rough streets . . . bumpy roads, improves riding comfort.



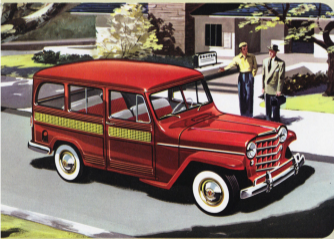
**Fenders** designed for high clearance, provide quick, easy change of tires . . . especially good feature for women.

**MAKE MONEY OR HAVE FUN WITH THE ALL-PURPOSE *Willys DeLuxe Station Wagon***

For you who need an extra  
*all-purpose* car...for you who  
want one car to serve your  
family and your business...

## Willys Deluxe Station Wagon

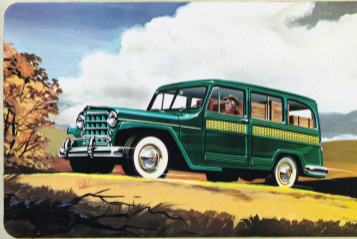
combines passenger-car comfort  
with *utility, ability and economy*  
available with 2 or 4-wheel drive



### Ideal for—

- AIRPORTS
- RANCHES
- SUMMER CAMPS
- CONTRACTORS
- PHOTOGRAPHERS
- JOBBERS
- CARPENTERS
- PAINTERS
- OIL FIELD OPERATORS
- RETIRED PEOPLE
- DOCTORS
- GROCERS
- SALESMEN
- FARMERS
- MERCHANTS
- DRUGGISTS
- PLUMBERS
- RURAL MAIL CARRIERS

FIRST STATION WAGON with ALL-STEEL BODY  
Safer, Quieter, Longer Lasting, Easier to Maintain

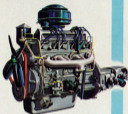


MAKE MONEY OR HAVE FUN WITH THE *ALL-PURPOSE* Willys Deluxe Station Wagon

# Two Great Engines

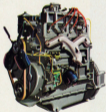
## HURRICANE "6"

Big engineering sensation—7.6 to 1 compression, 90 hp. Hurricane "6" F-Head Engine—unmatched by any six in America for power in relation to size. Gives flashing performance, unequalled economy. Uses regular gasoline.



## HURRICANE "4"

Operating economy is greater than ever in this amazing power plant—the Hurricane "4" F-Head Engine—with 12 hp.—compression ratio of 7.4 to 1. Uses regular gasoline.



**WILLYS MOTORS, INC.**  
TOLEDO, OHIO

**ROY E. BOX MOTORS**  
334 DO. CHAPARRAL ST.  
DALLAS, TEXAS

## Willys DeLuxe Station Wagon SPECIFICATIONS

### MECHANICAL

**Choice of Engines:** Hurricane F-Head, valve-in-head intake, valve-in-block exhaust. Both engines with aluminum heat-dissipating pistons; top ring chrome-plated. Intake manifold cast in head and water-jacketed. Automatic spark advance. 4-point rubber mounting.

**Hurricane 6 cylinder, 90-horsepower.** Compression ratio 7.6 to 1, 8.0 to 1 optional for high altitude. Bore 3 1/8, stroke 3 1/2. Piston displacement 161 cu. in. Oil system, refill 5 qts. 16 cylinder engine not available in 4-WD Model.)

**Hurricane 4 cylinder, 72-horsepower.** Compression ratio 7.4 to 1, 7.8 to 1 optional for high altitude. Bore 3 1/8, stroke 4 1/8. Piston displacement 134.2 cu. in. Oil system, refill 4 qts.

**Transmission:** 3-speed silent synchromesh gears. Overdrive optional at extra cost; unavailable on 4-WD. (4-WD ratios: first 2.798:1, second 1.55:1, third 1:1, reverse 3.798:1.)

**Cooling System:** Radiator capacity 9 qts. on 6 cylinder, 11 qts. on 4 cylinder. Thermostatic by-pass water recirculation for quick warm-up.

**Electrical System:** High output generator with regulator. Follow-through starter. Key starting. Sealed beam headlights.

**Rear Suspension:** Flanagan type with independently sprung front wheels.

Double acting shock absorbers. (4-WD Model. Hutchkis type drive with semi-elliptic springs and direct acting shock absorbers.)

**Rear Suspension:** Hutchkis drive with direct acting shock absorbers.

**Rear Axle:** Hypoid gears; 5.38 to 1 ratio on 4 cylinder models; 4.88 to 1 on 6 cylinder models (5.38 to 1 with optional overdrive).

### BASIC DIMENSIONS

**Wheelbase** 104 in. **Front tread** 5 1/2 in. **Rear tread** 57 in. **Overall length** 176 1/2 in. **Width** 71 3/4 in. **Height (loaded)** 72 1/2 in. **Tires, low pressure** 6.70 x 15—4 ply.

**4-WD Model:** **Wheelbase** 104 1/2 in. **Tread (front & rear)** 57 in. **Overall length** 176 1/2 in. **Width** 71 3/4 in. **Height (loaded)** 73 in. **Tires, 7.00 x 15—4 ply, non-directional tread.**

### EQUIPMENT

**Standard:** Dome light. Two sun visors. Glove box. Dual windshield wipers. Arm rests front and rear. Ash trays front and rear. Inside rear-view mirror. Single low pitch horn. Key locks in both front doors. Dual stop and tail lights.

**Optional at Extra Cost:** Dual horns. Chrome wheel trim. White sidewall tires. Oil bath air cleaner. Vacuum booster pump. Front bumper guard.