

CAMARO • CAVALIER Z24 • MONTE CARLO SS • CORVETTE



P E R F O R M A N C E C A R S



Chevrolet Performance Cars at a glance.

Chevy Thunder. Booming across the highways and back roads of Canada. With a line-up of performance cars that will make an enthusiast believe dreams do still come true. Within these pages you'll discover the Chevy Thunder that's right for you.

Table of Contents

CAMARO	Page
Models	2
IROC-Z	2
Z28	4
Instrument Panel	4
Sport Coupe/IT	6-7
Interiors	8-9
Colour Listings	21
Features and Options	22
Dimensions and Powerteams	22
CAVALIER Z24	10-11
Cavalier Instrument Panel	12
Colour Listings	21
Features and Options	23
Dimensions and Powerteams	23
MONTÉ CARLO SS	14-15
Colour Listings	21
Features and Options	24
Dimensions and Powerteams	24
CORVETTE	16-17
Colour Listings	21
Features and Options	25
Dimensions and Powerteams	25
CHEVY POWER	18-19
Sound Systems	21

Shown on front cover:
Camaro IROC-Z in Black with optional T-top roof.



Camaro IROC-Z in Bright Red with optional T-top roof.



Camaro LT in Black with optional T-top roof.



Camaro Sport Coupe in Yellow.



Camaro Z28 in Bright Blue Metallic.

Visually stunning, physically exhilarating, artfully balanced. New refinements and options and the continued influence of race engineering. This is Camaro for 1987.

Camaro Performance

Listen to your heartbeat. Chevy Thunder is what you hear. With a selection of V6 and V8 engines, 5-speed manual transmission standard and race inspired suspension systems. Couple those elements with sticky Eagle GT radials and power steering and brakes and you have the driving energy that's Camaro.

Camaro Style

On the road Camaro stands out at every turn. Sleek aero styling is punctuated by quad recessed rectangular headlamps. Bold tricolour taillights sit simply below the integrated spoiler that rises from the sweeping rear deck. Bold and beautiful, the slippery shape of Camaro is regarded by many styling experts to be one of the world's most successful 2 + 2 designs.

Camaro Models

Experience Camaro challenge in one of four models: The affordable Sport Coupe; new LT, the grand touring Camaro; Z28, a Canadian performance legend; and the ultimate Camaro IROC-Z.

IROC-Z Power

The meek may inherit the earth, but they won't be driving the 5.0 Litre V8-equipped Camaro IROC-Z. In standard guise, this engine is equipped with a 4-barrel carburetor. Optional is the 5.0 Litre V8 with Tuned-Port Fuel Injection, a real powerhouse, with increased horsepower from last year. New for '87 is an optional 5.7 Litre V8 with Tuned-Port Fuel Injection and 4-speed automatic overdrive transmission. (Limited availability — see your dealer for details.)

IROC-Z Handling

When you have a suspension specifically tuned, you'd expect nothing less than exotic-class cornering and response. That's just what these components deliver: a modified MacPherson front strut with a beefy front stabilizer, torque-arm with Delco/Bilstein gas pressure shocks and stabilizer bar at the rear. P245/50VR-16 Goodyear Eagle GT unidirectional high-performance radials rest on 16" aluminum wheels.

IROC-Z Style

"Ground-effects" body panels and rear spoiler help achieve a low drag coefficient of .33. Distinctive striping and colour-coordinated IROC-door panels and decals are specific to IROC-Z. Sport mirrors, locking wheel nuts, halogen fog lamps — IROC looks racy even when it's parked at the curb. And when you do move out — smartly, of course — special instrumentation, including a tachometer, keep you fully informed.

CAMARO



Informing you fully at every moment of all the action, both under the hood and on the road, is the Z28 instrument panel.

Note: Instruments are metric in Canada.

The Camaro philosophy proudly holds up Z28 as its definitive statement. Z28 is everything Camaro is meant to be. Fast, mean, and sexy. A performance legend, available today.

Z28 Performance

Of course, Z28 features V8 muscle. In a standard 5.0 Litre 4-barrel carburetor powerplant, teamed with 5-speed manual transmission. Or choose the optional 5.0 Litre V8 with Tuned-Port Fuel Injection. Even more hustle when your mood says "go!"

Z28 Handling

Blending compliance with sports car control is the acclaimed Sport Suspension. Larger dimension front stabilizer bar, rear stabilizer, specific spring rates and steering gear ratio combine with P215/65R-15 Eagle GT's to deliver impressive cornering power.

Z28 Style

Any true sports coupe must look the part, and so it is with Z28. With front air dam and "ground effects" rocker panels. Aggressive-looking, but just as important in helping Z28 achieve stability at speed. Specific multi-colour wide accents circle the lower body, while unique front fascia, black grille and simulated hood louvres round out Camaro body work with the appropriately aggressive stance.

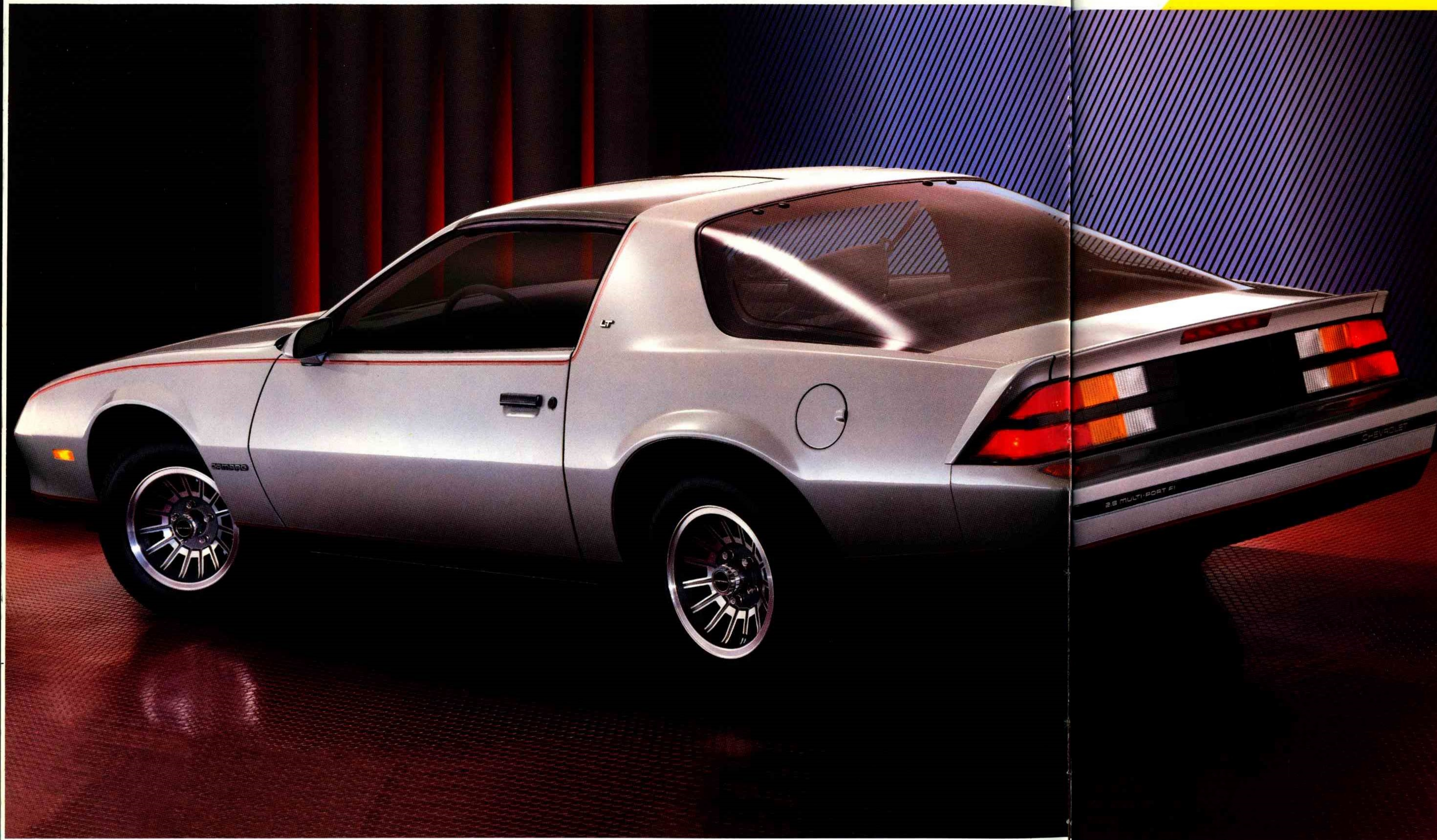
Z28 Options

Making your Z28 or IROC the most luxurious 2 + 2 coupe possible are two options new for '87: glove-soft leather seating, and the high-output Delco/Bose music system.



Camaro Z28 in yellow.

Z28
CAMARO



Camaro LT in Silver with optional aluminum wheel and tinted glass T-top roof.

You're looking at two variations on the Camaro theme — the grand touring Camaro LT, new for 1987, and the most affordable Camaro, the Sport Coupe.

The Essence of LT

Take the finest driving environment you can imagine. Combine it with the driving excitement that is uniquely Camaro. That's what Camaro LT is all about. With standard features inside that enhance riding comfort: Custom Cloth interior, auxiliary lighting, tinted glass, and AM/FM Stereo with Seek and Scan, and digital clock. Under the hood you'll find 2.8 Litre V6 power standard. A 5.0 Litre V8 is optional, as is the 4-speed automatic transmission. In the handling department, LT boasts a specific suspension and P205/70R-14 radials. Styling touches include dual Sport mirrors and upper and lower body striping and lower accent paint.

Pure Camaro, the Sport Coupe

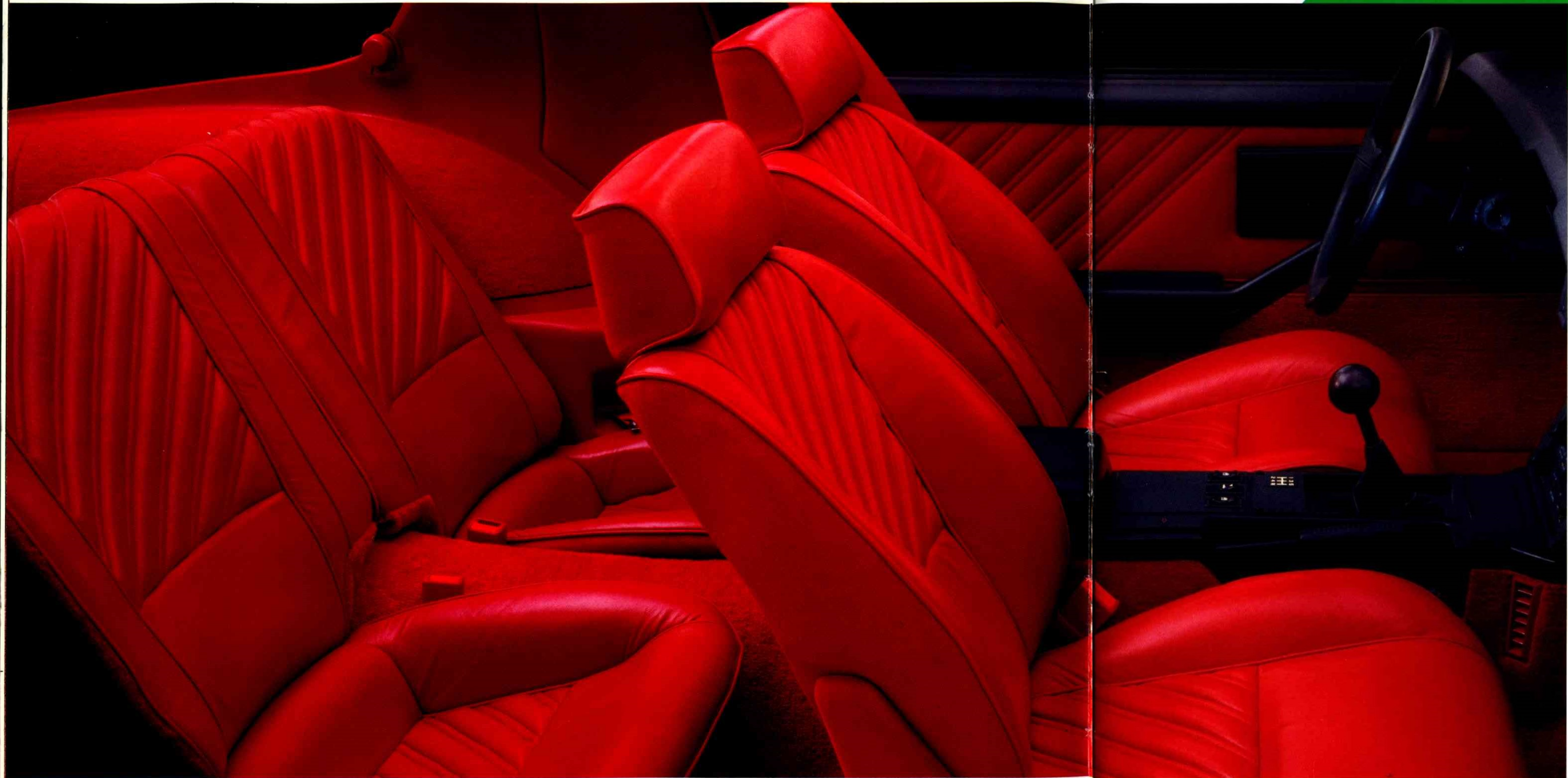
This is Camaro at its most elemental, and most affordable. Yet with everything that matters — the classic Camaro design and a whole lot of Chevy Thunder. With a standard 2.8 Litre V6 engine with Multi-Port Fuel Injection and 5-speed manual transmission. An optional 5.0 Litre V8 with 4-barrel muscle is available. Sport suspension, wide, grippy Eagle GT's, power steering and brakes — all standard. As is that distinctive Camaro styling, from the sweep of the hood to the breadth of the rear glass.



Camaro Sport Coupe in Bright Red.

Sport Coupe
CAMARO LT

The ultimate in Camaro comfort — genuine leather seats. Optional and shown here in Red.



There are those automotive designers who feel that performance cannot co-exist with comfort. Fortunately, Camaro engineers do not fall among their number. Thus, every Camaro interior is designed for comfort, while keeping you, the driver, as close to a one-to-one relationship with the road as possible.

Standard Interior Features
Camaro's driving environment features fully reclining front bucket seats in cloth that mould to your shape and instrumentation built around easily readable analog gauges. Side window defoggers, carpeting, and AM radio are standard as well. Fold down the rear seat back and 878 Litres (31 cu. ft.) of carrying space opens right up.

Optional Custom Interior
(Standard in LT). Performance driving is even more inviting when you add luxurious Custom Cloth to the front buckets. Carpeted cowl kick pads, and console sidewall are included, as is the Quiet Sound Group to provide extra insulation from the noisy bustle of the road. And new for '87, glove-leather seating is also available.

Interiors	Sport Coupe/ Z28, IROC-Z		LT
	S	A	
Cloth reclining front bucket seats	S	—	
Custom cloth reclining front bucket seats	A	S	
Custom leather reclining front bucket seats	A	A	
S — Standard A — Available			

Optional Custom Interior in Gray Cloth (standard in LT.)



Standard interior

Interiors
CAMARO



Cavalier Z24 coupe in Medium Blue Metallic.

Enthusiasts, please note. Cavalier Z24 is a serious road car with all the right performance credentials. The results are:

Sports Car Agility

Underpinning Z24 is the F41 Sport Suspension, with larger front and rear anti-sway bars, higher rate shock valving, quick ratio power rack-and-pinion steering, and P215/60R-14 radials. And this is one system that really delivers.

Muscle Car Response

Zero to 96 km/h (60 MPH) in 9.2 seconds.* Provided by the Generation II 2.8 Litre Multi-Port Fuel Injected V6 engine. Teamed with a new 5-speed manual transmission. This is acceleration quite capable of embarrassing cars with much higher price tags. Chevy Thunder comes through again.

The Z24 Exterior

Hot-looking. The new cowl-induction hood is a functional system that rams air directly into the air cleaner for increased power output. Extended rocker panels feature contrasting stripes. Race-inspired aluminum wheels, louvred grille, and front air dam complete the racy Z24 look.

*On the GM test track using professional drivers.



Z24's eager enthusiasm is also available as a Hatchback. Shown here in Silver Metallic with optional rear wiper/washer and rear spoiler.

Z24
CAVALIER

Buckle into the reclining sport bucket. Grab the leather-wrapped steering wheel. You're ready to savor Z24 excitement for yourself.

Full Instrumentation, Standard

This is one control centre that does more than look great — it communicates — all the essential data you need to know. Complete instrumentation is

right here, including digital electronic speedometer, analog electronic tachometer, graphic analog fuel, temperature, voltmeter and oil pressure gauges. Trip odometer and digital outside thermometer are also right here.

For ease of operation, many controls, like headlights and wipers, are located on pods a fingertip away from the steering wheel.

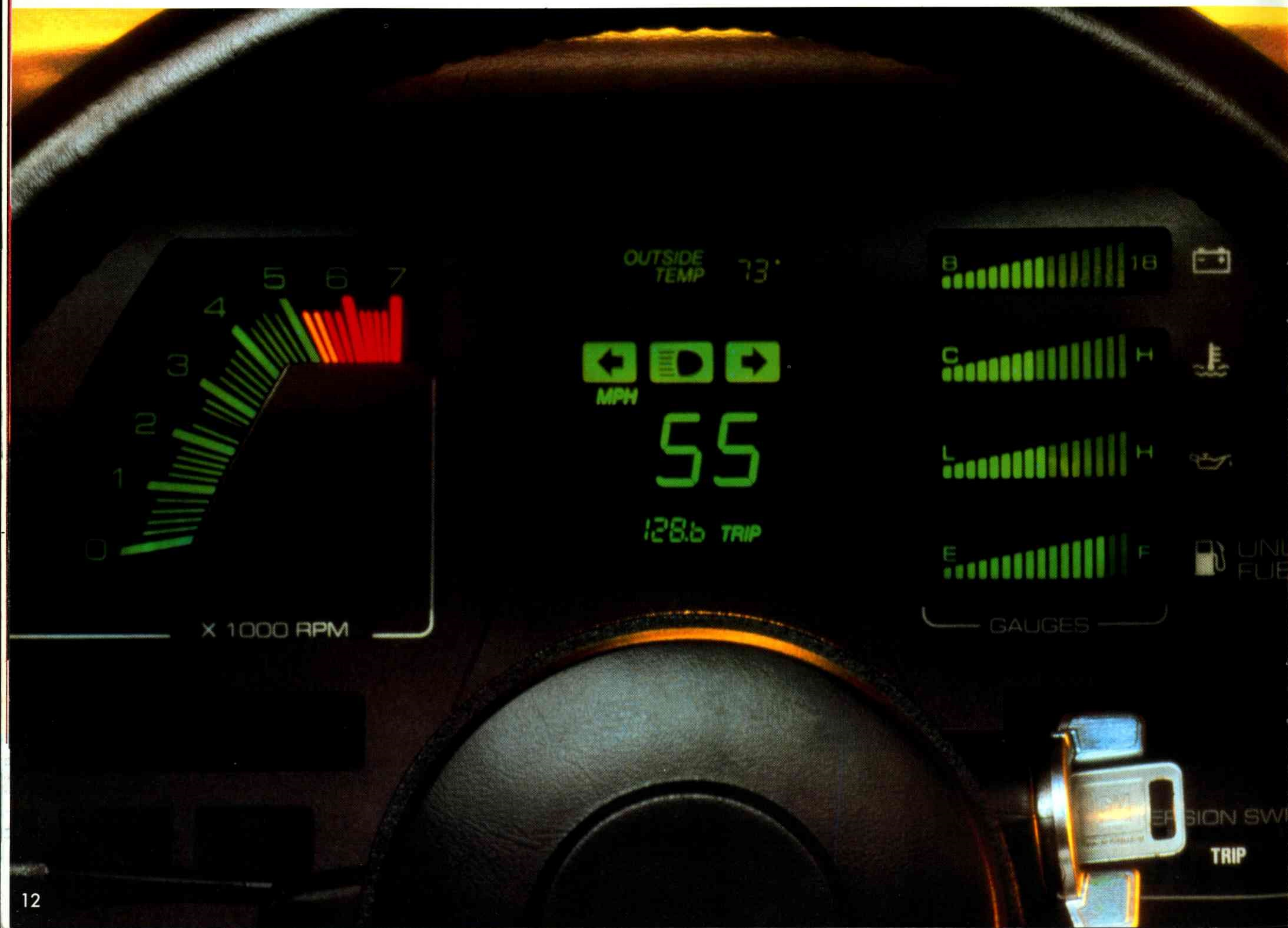
Interiors	Z-24 Coupe/Hatchback
Cloth reclining front bucket seats	S
Custom cloth reclining front bucket seats	A
S—Standard A—Available	

Z24 cushions you in a striped Sport Cloth interior. Also included: specific door panels, leather-wrapped steering wheel, and cockpit-style floor console. Shown in Dark Blue.

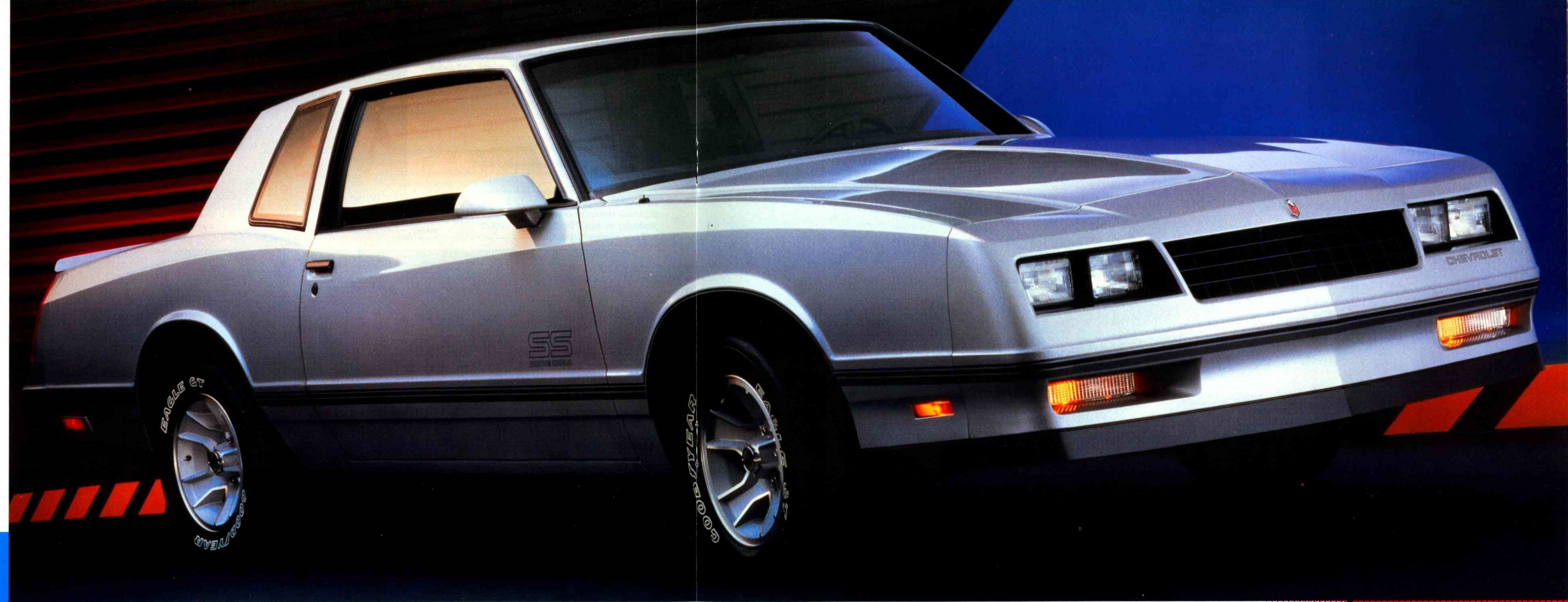


Z24 instrument panel with standard electronic instrumentation (metric or imperial readouts), controls for intermittent wipers and rear window defroster.

A full console sweeps up from the floor to meet the instrument panel. Contained within are controls for the optional air conditioning and Delco music systems. At your side, the newly-designed 5-speed shifter awaits your every command. (3-speed automatic also available).



Z24 Up Front
CAVALIER



Monte Carlo SS in Silver Metallic.

There's a folklore about cars and the people who make them go faster. Stories about challenging super speedways and short tracks. Tales about days spent challenging winding asphalt roads. It is in this spirit that Chevrolet offers Monte Carlo SS. A powerful yet agile sport coupe built for those who prefer their performance in a car of ample size.

SS Muscle

Standard: the race-proven 5.0 Litre High-Output V8. Standard: a smooth 4-speed automatic transmission with overdrive. Standard: 3.73 to 1 rear axle ratio, F41 Sport Suspension, and P215/65R-15 Eagle GT radials on 15-inch cast-aluminum wheels. And tied into complete instrumentation including tachometer — required equipment for those who are really tuned into performance cars.

SS Excitement

The distinctive nose and air dam recall the racetrack heritage. The high-performance heart culminates in the spoiler affixed to the rear deck. Blackout grille and exterior trim has a slightly menacing look appropriate to this vehicle. The distinguishing stripe that encircles SS makes this car look fast even when it's standing still.

SS Performance

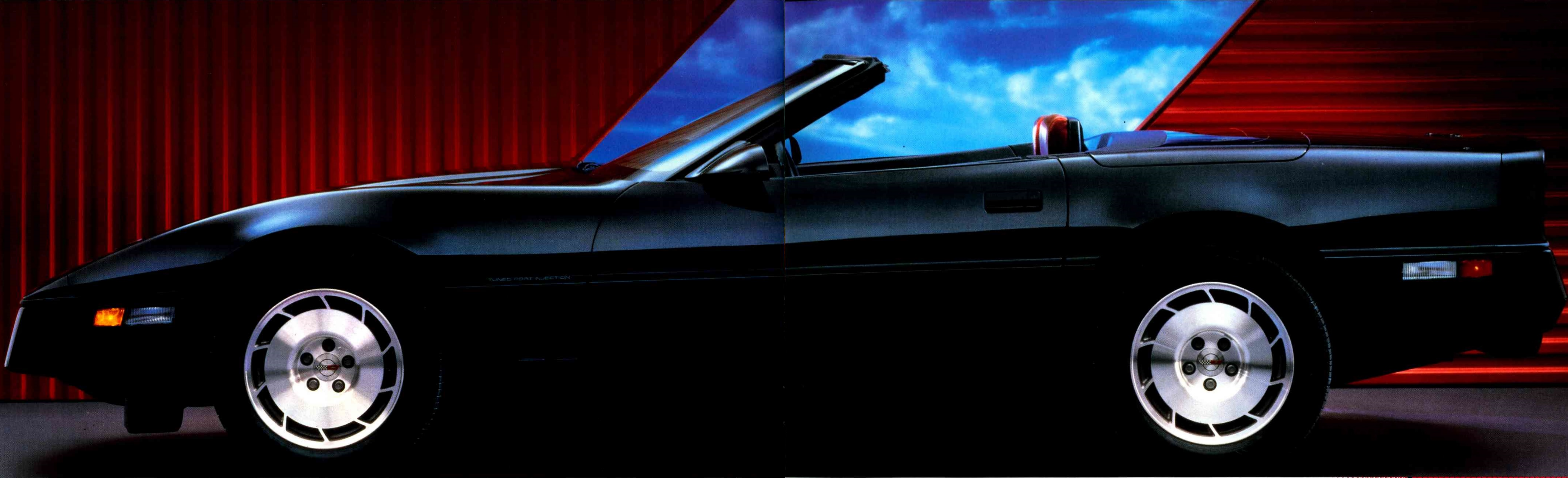
And just look at what that muscle delivers when SS hits the streets. 0 to 96 km/h (60 MPH) in 8.7 seconds*.

Impressive numbers, in a spirited super sport that really looks the part.

*All performance figures achieved on the GM test track by professional drivers.

Interiors	Monte Carlo SS
Cloth front bench seat	S
Cloth 55/45 divided front seat	A
Cloth reclining front bucket seats	A
S—Standard A—Available	

MONTE
CARLO SS



Electronic, Digital instrumentation—all you need to know about Corvette performance.

Interiors	Corvette Convertible/ Coupe
Cloth reclining bucket seats	S
Leather reclining bucket seats	A
Leather sport reclining bucket seats	A
S—Standard A—Available	

Aggressive. Exuberant. Visceral. Thrilling. And that's just the performance. Add stunning, jaunty, bold, unmistakable, and you begin to understand North America's only true sports car — Corvette.

Now in two manifestations, with world class performance built under glossy fiberglass skins.

Gorgeous to look at, exhilarating to drive. Corvette Coupe is recognizable instantly, anywhere. Shown in Red.

Ambitious Technology.

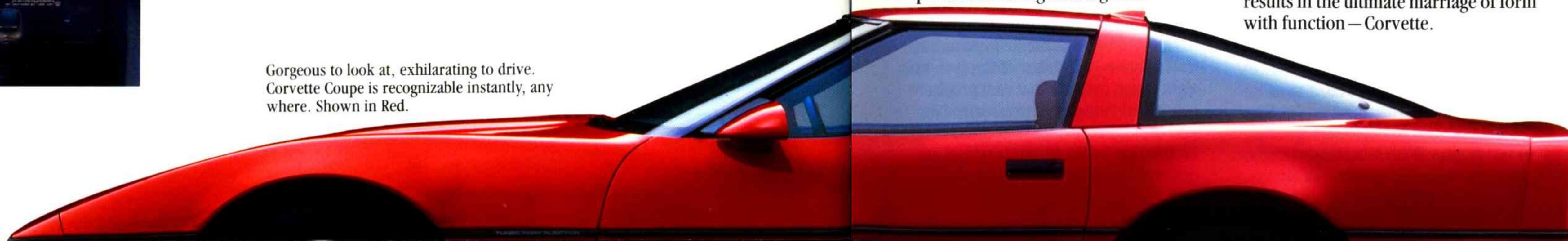
State-of-the-art is the best characterization of Corvette's advanced engineering componentry — from the Tuned-Port Fuel Injection of the 5.7 Litre V8 powerplant to the fully independent four-wheel suspension to the Eagle GT P255/50VR-16 unidirectional steel-belted radial tires. Bosch ABS II anti-lock braking is another important dimension of Corvette's performance engineering: this

computer-controlled system virtually eliminates wheel lock-up, allowing safe stops in most types of road conditions.

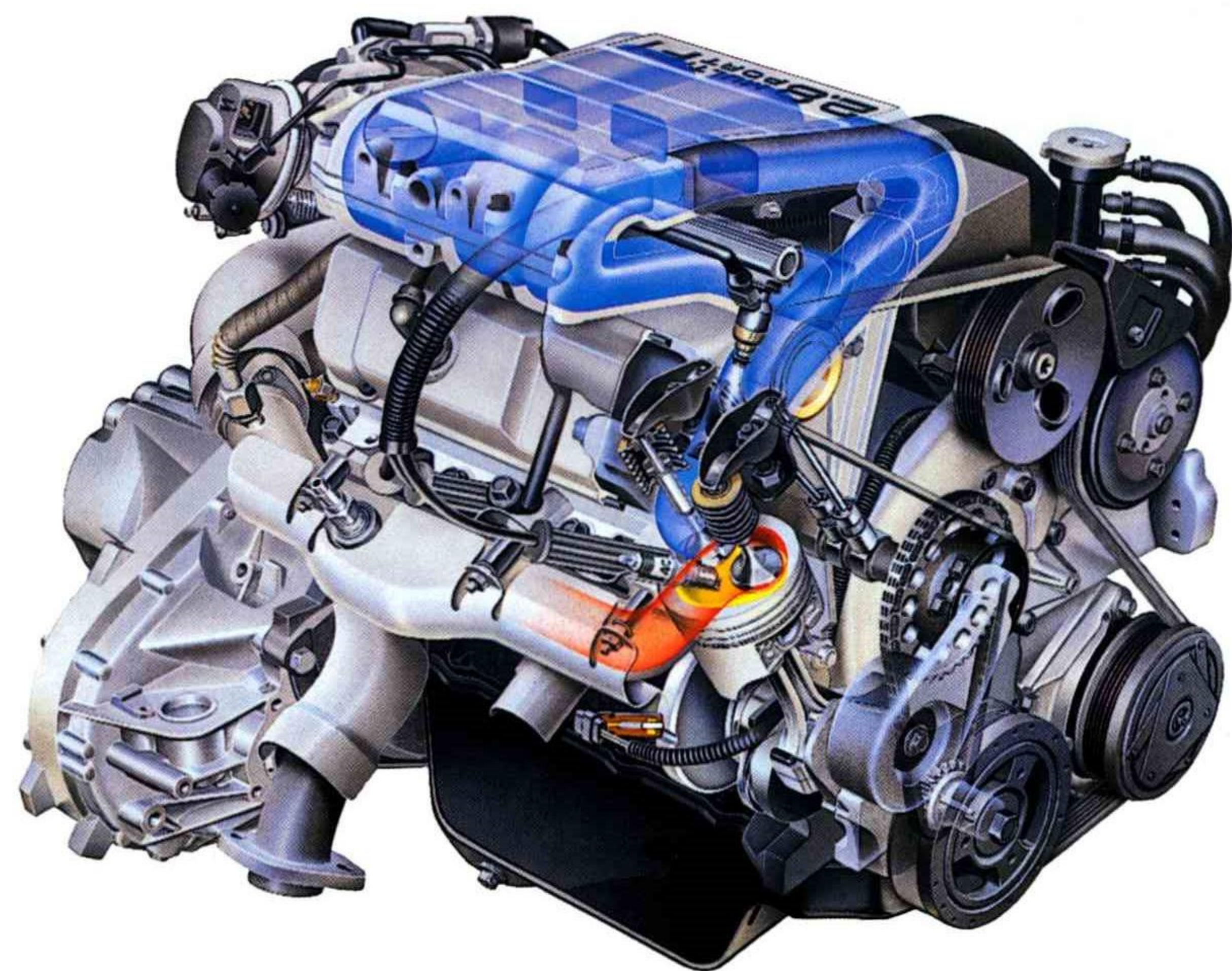
Aesthetic Design.

As a three-dimensional sculpture, Corvette's distinctive wedge shape and sleek posture recall the urgency of motion. The application of sophisticated ergonomics in the cockpit creates a total driving environment. The successful integration of all elements results in the ultimate marriage of form with function — Corvette.

Corvette Convertible shown in Black.



CORVETTE



Generation II 2.8 Litre V6 with Multi-Port Fuel Injection.

Chevy Thunder. The stuff of fond legend. A heritage backed by more race wins than can be claimed by any other carmaker. And it all started right here. With powerplants that balance the demand for contemporary fuel management with the desire to celebrate the joy of movement. Engines like these:

Generation II 2.8 Litre V6 with Multi-Port Fuel Injection.

Standard on Cavalier Z24 and Camaro Sport Coupe and I.T. Substantially redesigned in 1987 to combine exciting performance with V6 economy. It

features new aluminum cylinder heads, rocker covers and newly designed valve train, plus larger inlet and exhaust ports.

A new combustion chamber shape and piston head design produce a higher compression ratio for increased output. The result is more horsepower than last year.

5.0 Litre 4-barrel V8.

Standard on Camaro Z-28 and IROC-Z.

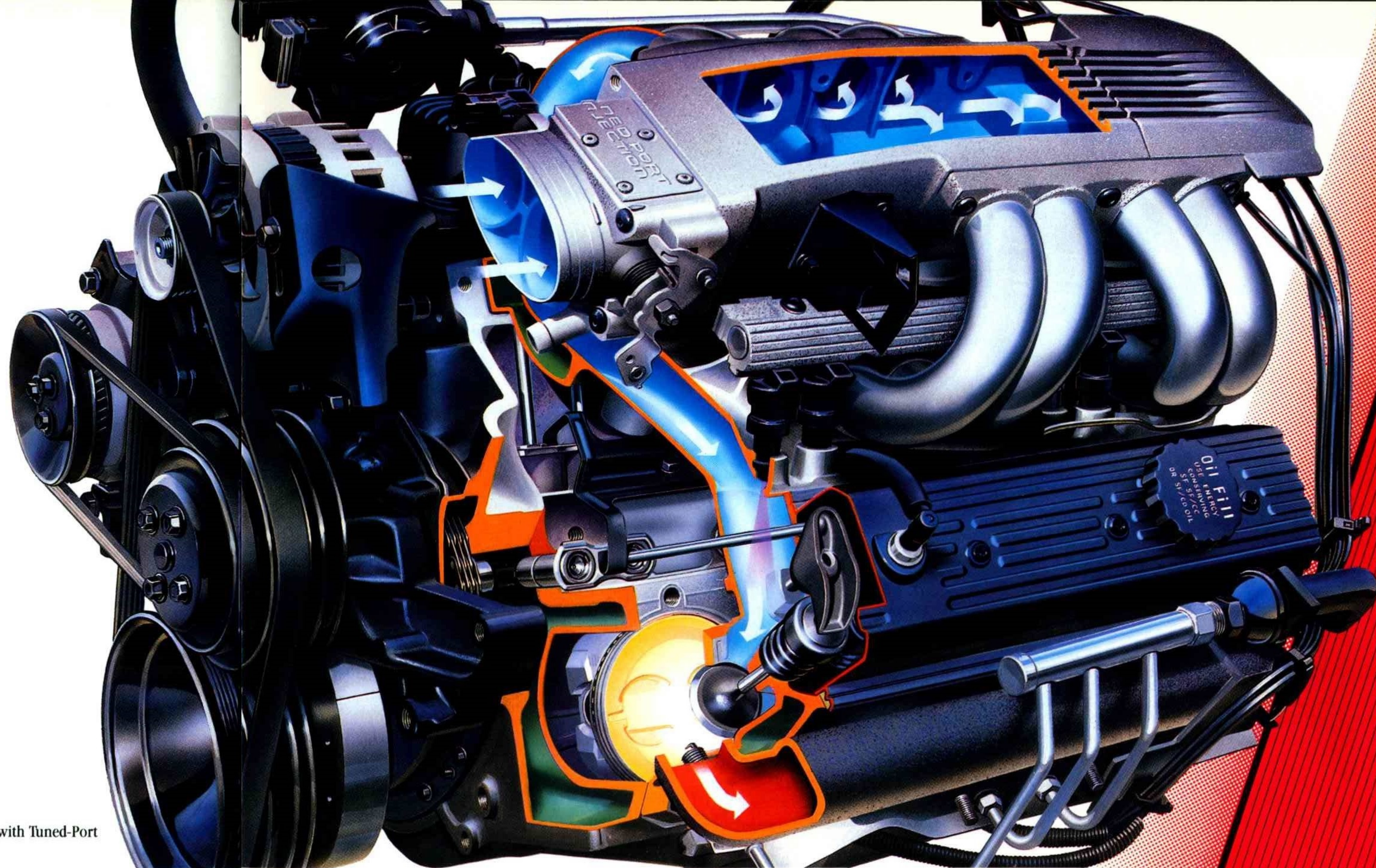
5.0 Litre High Output V8.

Standard in Monte Carlo SS. A race-proven design, with more professional racing victories to its credit than any other engine. With 4-barrel carburetion pushing measured amounts of air

through the system, horsepower is 180 at 4,800 RPM. Torque registers 225 lb.-ft. at 3,200 RPM.

5.0 Litre V8 Engine with Tuned-Port Fuel Injection.

Optional on Camaro IROC and Z28. This legendary Chevy small-block engine provides 215 horsepower and 295 lb.-ft. torque at 3200 RPM when it's teamed up with the 5-speed manual transmission. The heart of the system is eight tuned runners that ram precisely controlled volumes of pressurized air into the eight cylinder inlet ports. Meanwhile, exact amounts of fuel are delivered via a fuel rail system and



5.0 Litre V8 Engine with Tuned-Port Fuel Injection.

sprayed into the ports through eight Bosch injectors. Precision is important, so an electronic control module continually measures air mass, altitude and other variables, then adjusts the injector's pulse duration with computer speed and accuracy. The bottom line on all this technology is instant throttle response, dependable starting and operation and positive fuel shut-off that helps prevent "run-on" after the engine is switched off.

5.7 Litre Tuned-Port Fuel-Injected V8.

The soul of Corvette performance. Displacing 5.7 Litres, this engine uses a Tuned-Port Fuel Injection system to precisely meter the right air fuel mix into each cylinder. There, Electronic Spark Control optimizes combustion regardless of ambient conditions. The result is a 9.5 to 1 compression ratio, 240 horsepower at 4,000 RPM, and 345 lb.-ft. torque at 3,200. This engine has an aluminum cylinder head, reducing weight and enhancing engine cooling for longevity, reliability and efficient combustion.



DRESS IT UP TO SUIT YOUR DRIVING TASTE

You work hard for a living. Indulge yourself in your new car purchase. Customize your performance Chevy to spoil you: to run, sound and look just the way you want it. In this section and the following pages are lists of the many option choices you have, to discover the Chevy Thunder that's right for you.

CAMARO

Tinted glass panels. Can be removed to create a T-bar top.

CAVALIER Z24

Removable tinted glass roof panel.

MONTE CARLO SS

Tinted glass panels. Can be removed to create a T-bar top.

CORVETTE

Tinted transparent lift-off roof panel.
Dual (body coloured and tinted transparent)
lift-off roof panel package.



Optional Audio Equipment

These GM Delco Music Systems are quality built to give you the best sound possible for the price. For pure listening pleasure, every model is engineered with an Electronically Tuned Receiver to provide drift-free automatic fine tuning. In addition, when activated, an electronic memory will seek the next listenable station on the band or automatically scan all listenable stations. The choice is yours.

ETR AM/FM Stereo with Seek & Scan, Digital Clock. Available on base Camaro Sport Coupe, Cavalier Z24, Monte Carlo SS. It comes standard on Corvette, Camaro LT, Z28 and IROC-Z.

ETR AM/FM Stereo with Seek & Scan, Digital Clock, Auto Reverse Cassette. Available on Camaro, Cavalier Z24, Monte Carlo SS and Corvette.

ETR AM/FM Stereo with Seek & Scan, Digital Clock, Auto Reverse Cassette with Music Search, Graphic Equalizer. Available on Camaro, Cavalier Z24 and Monte Carlo SS. Delco/Bose Music System — GM's finest. Equipment is acoustically tailored to each vehicle. Includes ETR AM/FM Stereo with Seek & Scan, Digital Clock, Auto Reverse Cassette with Music Search and patented Bose Amplifiers that deliver up to 100 watts total power. Available on Camaro and Corvette.

AM Radio with Clock. Available on Monte Carlo SS.

Exterior Colours

CAMARO AND LT

Silver Metallic/Gray
Bright Blue Metallic/Black
Dark Blue Metallic/Gray
White/Gray
Black/Gray
Yellow/Gray
Dark Red Metallic/Gray
Bright Red Metallic/Black
Medium Gray Metallic/Black
Dark Brown Metallic/Black†

†Camaro only

Z28

Silver Metallic
Bright Blue Metallic
Dark Blue Metallic
White
Black
Yellow
Dark Brown Metallic
Dark Red Metallic
Bright Red Metallic
Medium Gray Metallic

IROC-Z

Bright Blue Metallic
White
Black
Yellow
Dark Brown Metallic
Dark Red Metallic
Bright Red Metallic
Medium Gray Metallic

Note: Metallic paints are extra cost on some models.

CAVALIER Z24

White
Black
Medium Blue Metallic
Dark Red

MONTE CARLO SS

White
Silver Metallic
Black
Light Brown Metallic
Dark Maroon Metallic

CORVETTE

Silver Metallic
Medium Gray Metallic
Medium Blue Metallic
Yellow
White
Black
Gold Metallic
Silver Beige Metallic
Medium Brown Metallic
Dark Red Metallic
Bright Red

Custom Two-Tone Paint*

Silver Metallic/
Medium Gray Metallic
Medium Gray Metallic/Black
White/Silver Metallic
Silver Beige Metallic/
Medium Brown Metallic

*Not available on convertible.

CAMARO FEATURES AND OPTIONS

EXTERIOR FEATURES	Sport Coupe	LT	Z28	IROC-Z
Air dam, body colour/rocker extensions, accent colour	-	-	-	S
Air dam, "specific ground effects"/rocker exteriors in accent colours	-	-	S	-
Body, lower colour-accent with stripe	-	-	S	S
Fog lamps (in front fascia)	A	A	A	S
Front and rear fascias, body colour	S	S	S	S
Glass, Soft-Ray tinted, all windows	A	S	S	S
Handles, door and locks, black	S	S	S	S
Hatchback, rear, full-opening	S	S	S	S
Headlamps, dual recessed rectangular	S	S	S	S
Lighting, auxiliary group	A	S	A	A
Louvres, hood simulated	-	-	S	S
Mirrors, LH remote control, RH manual control	S	-	-	-
Black	S	-	-	-
Body-coloured	-	S	S	S
Mouldings:				
Black windshield	S	S	S	S
Lower body with accent colour	-	-	S	S
Paint, base coat/clear coat	S	S	S	S
Taillamps, triple-unit with amber turn signals	S	S	S	S
Spoiler, rear	A	A	S	S
Stoplamp, centre high-mounted	S	S	S	S
Wheels:				
Rally with trim rings	S	-	-	-
Full wheel covers	-	S	-	-
Styled-aluminum wheels	-	A	S	S

MECHANICAL FEATURES	Sport Coupe	LT	Z28	IROC-Z
Audible wear sensors, front disc brake	S	S	S	S
Battery, Delco Freedom II Plus	S	S	S	S
Body construction, full unitized	S	S	S	S
Brakes, power front disc/rear drum	S	S	S	S
Computer Command Control system	S	S	S	S
Engines:				
2.8 litre MFI V6	S	S	-	-
5.0 litre 4-Bbl V8	A	A	S	S
Generator, Delcotron with built-in solid state regulator	S	S	S	S
Ignition System, High Energy	S	S	S	S
Recovery system, coolant	S	S	S	S
Steering, power	S	S	S	S
Suspension Equipment:				
Modified MacPherson strut front	S	S	S	S
Soft-Ride Suspension System	-	S	-	-
Special Ride and Handling Suspension	-	-	S	S
Transmission, 5-speed manual	S	S	S	S
Tires: (steel-belted radial blackwall)				
P215/65R-15 highway	S	-	-	-
P205/70R-14 all-season	-	S	-	-
P215/65R-15 highway	-	-	S	-
P245/50VR-16 highway	-	-	-	S

CAMARO INDIVIDUAL OPTIONS	Sport Coupe	LT	Z28	IROC-Z
Air conditioning, includes increased engine cooling and generator capacity and Soft-Ray tinted glass	A	A	A	A
Antenna, power automatic	A	A	A	A
Axle, limited slip differential	A	A	A	A
Brakes, power four-wheel disc	-	-	-	A
Battery, heavy-duty	A	A	A	A
Heater, engine block	A	A	A	A
Luggage compartment, deluxe trim	A	S	A	A
Mirrors:				
Twin electric remote control	A	A	A	A
Inside automatic day/night	A	A	A	A
Mouldings:				
Body side protective, black	A	-	-	-
Body side protective, colour-keyed	-	A	A	A
Radio Equipment:				
AM with clock	A	-	-	-
AM/FM stereo ETR w/seek and scan, clock, digital display, stereo cassette tape player, and 4-speaker system	A	A	A	A
AM/FM stereo ETR w/seek and scan, clock, digital display, graphic equalizer, cassette stereo tape player and 4-speaker system	A	A	A	A
Roof panels, removable	A	A	A	A
Seats, 6-power, driver's side	A	A	A	A
Seat, split folding rear back	A	A	A	A
Tires: (steel-belted radial)				
P215/65R-15 highway white-belted	A	-	A	-
P205/70R-14 all-season white-stripe	-	A	-	-
P215/65R-15 highway blackwall	-	-	A	-
Transmission, 4-Speed overdrive automatic	A	A	A	A
Trim:				
Custom cloth interior	A	S	A	A
Custom leather interior	A	A	A	A
Deluxe luggage compartment	A	S	A	A
Wheel Equipment: Aluminum-styled wheels	-	A	S	S

CAMARO EASY OPTION PACKAGES						
	Sport Coupe		LT		Z28/IROC-Z	
	Package 1	Package 2	Package 1	Package 2	Package 1	Package 2
Front & Rear Floor Mats w/Carpet Inserts	•	•	•	•	•	•
Power Hatch Release	•	•	•	•	•	•
Comfortilt Steering Wheel	•	•	•	•	•	•
Intermittent Windshield Wipers	•	•	•	•	•	•
Halogen Headlamps		•	•	•	•	•
Soft-Ray Tinted Glass	•	•				
Auxiliary Lighting Group	•	•			•	•
AM/FM ETR Stereo Radio with Seek/Scan, Clock, Digital Display	•	•				
Rear Compartment Security Cover		•	•	•		•
Gauge Package		•	•	•		
Power Door Locks		•		•		•
Power Windows		•		•	•	•
Electronic Speed Control		•		•		•
Roof Mounted Console		•		•		•
Spoiler, Rear	•	•	•	•		
Camaro Easy Option Packages' content subject to change.						

Camaro Easy Option Packages' content subject to change.

POWER TEAMS	Engine Availability				Transmission Availability	
	Opt. No.	Sport Coupe	LT	Z28	Z28 IROC-Z	5-Spd Manual (MM5) Automatic w/overdrive (MX0)
Engine						
2.8 Litre MFI* V6	LB8	S	S	-	-	S A
5.0 Litre 4-Bbl V8	LG4	A	A	S	S	S† A
5.0 Litre TPI** V8	LB9	-	-	A	A	S A
5.7 Litre TPI** V8	L98	-	-	-	A	- A
* - Multi-Port Fuel Injection ** - Tuned-Port Fuel Injection †Except LT						

	Sport Coupe/LT	Z28/IROC-Z
Wheelbase	2566 (101.0)	2566 (101.0)
Length (overall)	4777 (188.0)	4877 (192.0)
Width (overall)	1850 (72.8)	1850 (72.8)
Height (loaded)	1271 (50.0)	1279 (50.3)
Head Room-Front	940 (37.0)	940 (37.0)
Head Room-Rear	905 (35.6)	905 (35.6)
Leg Room-Front	1092 (43.0)	1092 (43.0)
Leg Room-Rear	756 (29.8)	756 (29.8)
Cargo Volume: litres (cu. ft.)	350 (12.4)*	350 (12.4)*
Fuel Tank Capacity: (litres/gals.)	61.3 (13.5)	61.3 (13.5)
*879 litres (31.0 cu. ft.) with rear seat-back down (770 litres (27.2 cu. ft.) with rear seat-back down on LT)		

CAVALIER Z24 FEATURES AND OPTIONS

EXTERIOR FEATURES	2-Door Coupe	2-Door Hatchback Coupe
Antenna, radio, black	S	S
Bumper, front and rear black rub strips	S	S
Fascia front, sport with integral air dam; rear-sport	S	S
Glass, Soft-Ray tinted, all windows	S	S
Grille and headlamp bezels, black	S	S
Handles, door and lock cylinders, black	S	S
Headlamps, quad rectangular halogen	S	S
Frames, door and window, black	S	S
Mirrors, sport LH remote control, RH manual control	S	S
Mouldings: (black)		
Belt reveal	S	S
Body side protective	S	S
Door and window reveal	S	S
Roof drip	S	S
Rocker panel and wheel opening	S	S
Windshield and rear window	S	S
Rocker panel extensions	S	S
Sport stripe decal, multi-colour	S	S
Taillamps, large tri-colour with black accent	S	S
Wheels, aluminum	S	S
Windows, swing-out rear quarter	S	S

INTERIOR FEATURES	2-Door Coupe	2-Door Hatchback Coupe
Armrest and door pull handles	S	S
Belts, deluxe colour-keyed safety	S	S
Carpeted front and rear passenger floor areas	S	S
Carpeted trunk/load floor	S	S
Console, floor "cockpit type" with open storage, coin holder and two ashtrays	S	S
Defoggers, side window	S	S
Defroster, rear window	S	S
Instrument cluster, electric with tachometer	S	S
Lighter, cigarette	S	S
Lighting, auxiliary group	S	S
Mats, floor front and rear w/colour-keyed carpet inserts	S	S
Mirror, rearview day/night	S	S
Opener, power trunk	S	S
Radio, AM	S	S
Seat, passenger front easy entry	S	S
Seats, reclining bucket, cloth trim	S	S
Steering, sport two-spoke, black with Comfortilt feature	S	S
Stoplamp, centre high-mounted	S	S

S - Standard A - Available

MECHANICAL FEATURES	2-Door Coupe	2-Door Hatchback Coupe
Audible wear sensors, front disc brakes	S	S
Battery, heavy-duty Delco Freedom II Plus	S	S
Body construction, full unitized	S	S
Brakes, power front disc/rear drum	S	S
Computer Command Control system	S	S
Drive, front-wheel	S	S
Engine, 2.8 Litre MFI V6	S	S
Engine fan, electric thermostatically controlled	S	S
Generator, Delcotron with built-in solid state regulator	S	S
Ignition System, High Energy	S	S
Recovery system, coolant	S	S
Steering, power rack-and-pinion	S	S
Suspension Equipment:		
Full coil	S	S
MacPherson strut front	S	S
Trailing arm rear	S	S
Sport suspension components	S	S
Tires: (steel-belted radial ply)		
P215/60R-14 highway blackwall	S	S
Transmission, 5-speed manual	S	S
Windshield wiper system, intermittent	S	S

CAVALIER Z24 INDIVIDUAL OPTIONS	2-Door Coupe	2-Door Hatchback Coupe
Air conditioning, includes increased engine cooling and generator capacity and Soft-Ray tinted glass	A	A
Carrier, luggage decklid, black	A	-
Door locks, power	A	A
Headlamps, halogen	A	A
Heater, engine block	A	A
Paint, metallic	A	A
Radio equipment:		
AM/FM stereo ETR w/seek & scan, digital display, clock and 4-speaker system	A	A
AM/FM stereo ETR w/seek & scan, digital display, clock, cassette stereo tape player and 4-speaker system	A	A
AM/FM stereo ETR w/seek & scan, digital display, clock, graphic equalizer, cassette stereo tape player and 4-speaker system	A	A
Roof panel, removable tinted glass	A	A
Seat equipment:		
Reclining front bucket seats with Custom "CL" cloth trim	A	A
Divided folding rear seat back, included with Custom "CL" trim	-	A
Speed control, electronic	A	A
Spoiler, rear end sport	-	A
Tires: (steel-belted radial)		
P215/60R-14 highway white-lettered	A	A
Transmission, 3-speed automatic	A	A
Windows, power	A	A
Wiper system, rear window washer & wiper	-	A

POWER TEAMS	Engine Availability		Transmission Availability	
	Opt. No.	2-Door Coupe	2-Door Hatchback Coupe	5-Speed Manual (MM5) Automatic (MX1)
2.8 Litre MFI* V6	LB6	S	S	S A
* - Multi-Port Fuel Injection.				

DIMENSIONS:	mm (inches)	2-Door Coupe	2-Door Hatchback
Wheelbase		2571 (101.2)	2571 (101.2)
Length (overall)		4379 (172.4)	4379 (172.4)
Width (overall)		1677 (66.0)	1677 (66.0)
Height (loaded)		1275 (50.2)	1275 (50.2)
Head Room - Front		957 (37.7)	955 (37.6)
Head Room - Rear		931 (36.7)	927 (36.5)
Leg Room - Front		1071 (42.2)	1071 (42.2)
Leg Room - Rear		805 (31.7)	805 (31.7)
Cargo Volume: litres (cu. ft.)		374 (13.2)	419 (14.8)*
Fuel Tank Capacity: litres (gals.)		53 (11.6)	53 (11.6)
* 1090 (38.5) with rear seat down.			

MONTE CARLO SS FEATURES AND OPTIONS

EXTERIOR FEATURES		Sport Coupe
Antenna, fixed mast radio, black	S	
Bumper fascia, front body-coloured with decal striping	S	
Bumper fascia, rear body-coloured	S	
Decal, Monte Carlo SS decklid nameplate	S	
Grille and headlamp bezels, black	S	
Handles, door and lock cylinder black	S	
Headlamps, dual rectangular	S	
Lamps, backup within taillamps	S	
Mirrors, LH remote control, RH manual control	S	
Mouldings (black): Door belt	S	
Roof drip	S	
Windshield and rear window	S	
Spoiler, rear decklid, full-length	S	
Striping, tri-tone with Monte Carlo SS decals	S	
Taillamps, vertically-styled	S	
Wheels, aluminum	S	
Windshield wipers, concealed	S	
INTERIOR FEATURES		Sport Coupe
Armrest, front seat centre folding	S	
Belts, deluxe colour-keyed safety	S	
Carpeting, colour-keyed one-piece cut-pile	S	
Defroster, rear window	S	
Door panels with padded armrests and carpeted lower section	S	
Gauge package with tachometer	S	
Headliner, one-piece with thick foam padding	S	
Horns, dual	S	
Light, centre dome	S	
Lighter, cigarette	S	
Lighting, instrument panel courtesy, ashtray and glove compartment	S	
Lock, glove compartment	S	
Mat, luggage compartment	S	
Mirror, day/night rearview	S	
Radio, AM with dual front speakers	S	
Steering wheel, sport two-spoke, black	S	
Steering column, black	S	
Seat, notchback front	S	
Stoplamp, centre high-mounted	S	
Straps, door-pull	S	
S – Standard A – Available		

MECHANICAL FEATURES		Sport Coupe
Audible wear sensors, front disc brakes	S	
Battery, Delco Freedom II Plus	S	
Body construction, all-welded	S	
Heavy-gauge, steel	S	
Body mounting system, fourteen-cushion	S	
Brakes, power front disc/rear drum	S	
Engine, 5.0 Litre H.O. 4-Bbl. V8	S	
Fenders, inner front and rear	S	
Frame, full-perimeter	S	
Generator, Delcotron with built-in solid state regulator	S	
Ignition System, High Energy	S	
Recovery system, coolant	S	
Steering, power	S	
Suspension Equipment: Full coil	S	
Full stabilizer bar	S	
F41 sport suspension	S	
Independent-coil-spring front	S	
Four-link type coil-spring rear	S	
Gas-filled shock absorbers	S	
Tires: (steel-belted radial ply) P215/65R-15 highway white-lettered	S	
Transmission, 4-speed overdrive, automatic	S	
MONTE CARLO SS INDIVIDUAL OPTIONS		Sport Coupe
Air conditioning, includes increased engine cooling and generator capacity	A	
Axle, limited slip differential	A	
Battery, heavy-duty	A	
Console floor	A	
Glass, Soft-Ray tinted All windows	A	
Windshield	A	
Heater, engine block	A	
Lighting equipment: Auxiliary lighting group: includes engine compartment, dome and reading lamps	A	
Halogen headlamps	A	
Locks, power door	A	
Mats, floor: colour-keyed w/carpet inserts Front	A	
Rear	A	
Mirrors: Sport, LH and RH remote control, colour-keyed	A	
Visor vanity, passenger side	A	
Visor vanity, passenger side illuminated	A	
Radio equipment: AM with clock	A	
AM/FM stereo ETR w/seek & scan, 4-speaker system	A	
AM/FM stereo ETR w/seek & scan, digital display, clock and 4-speaker system	A	

INDIVIDUAL OPTIONS (cont'd)		Sport Coupe	
AM/FM stereo ETR w/seek & scan, digital display, clock, cassette stereo tape player and 4-speaker system		A	
AM/FM stereo ETR w/seek & scan, digital display, clock, graphic equalizer, cassette stereo tape player and 4-speaker system		A	
4-speaker system with extended range rear speakers; included AM stereo/FM stereo radio		A	
Roof panel, removable: tinted glass with locks		A	
Seats: Power, driver's seat, six-way		A	
Divided front seat with cloth trim		A	
Reclining front bucket with cloth trim		A	
Speed control, electronic		A	
Steering wheel, comfortilt		A	
Trunk opener, power		A	
Windows, power		A	
Windshield wiper system, intermittent		A	
		Transmission	
		Automatic w/overdrive (MX0)	
POWER TEAMS Engine	Opt. No.	Engine Availability	
5.0 Litre 4-Bbl. V8 (H.O.)	L69	S	S
DIMENSIONS: mm (in.)			
			Sport Coupe
Wheelbase			2745 (108.1)
Length (overall)			5141 (292.4)
Width (overall)			1824 (71.8)
Height (loaded)			1396 (55.0)
Head Room – Front			956 (37.6)
Head Room – Rear			961 (37.8)
Leg Room – Front			1086 (42.8)
Leg Room – Rear			923 (36.3)
Cargo Volume: litres (cu. ft.)			458 (16.2)
Fuel Tank Capacity: litres (gals.)			66 (14.6)

CORVETTE FEATURES AND OPTIONS

EXTERIOR FEATURES			Hatchback	Coupe	Convertible
Antenna, automatic power	S	S			
Body panels, corrosion-resistant fiberglass	S	S			
Bumper systems, energy absorbing	S	S			
Fascia, soft front and rear, body-coloured with integral air dam	S	S			
Fog lamps, dual quartz halogen in grille opening	S	S			
Glass, tinted and flush-mounted	S	S			
Glass, rear hatch frameless	S	S			
Hood, full-tilting clam-shell	S	S			
Headlamps, power-operated retractable halogen	S	S			
Frames, door and window, black	S	S			
Mirrors, sport dual electric remote controlled	S	S			
Mouldings, designed-in body side	S	S			
Louvres, front fender	S	S			
Roof, full-folding	-	S			
Roof panel, one-piece removable fiberglass	S	-			
Stoptlamp, centre high-mounted	S	S			
Wheels, cast alloy aluminum	S	S			
INTERIOR FEATURES			Hatchback	Coupe	Convertible
Air conditioning	S	S			
Carpet, deep-twist floor and storage area	S	S			
Console, centre with shifter and coin tray; includes controls for windows, radio, air conditioning and electric mirror	S	S			
Defoggers, side window	S	S			
Defroster, rear window includes heated outside mirrors	S	-			
Door panels, soft-padded and carpeted	S	S			
Glove compartment lock and lamp	S	S			
Headlamp-on reminder	S	S			
Information system, driver	S	S			
Instrumentation, full	S	S			
Insulation package, accoustical	S	S			
Lamps:					
High-intensity interior on door sidewall and "B" pillar	S	S			
Underdash courtesy	S	S			
Twin underhood	S	S			
Mirror, day/night rearview with integral map lamps	S	S			
Mirror, visor vanity RH illuminated	S	S			
Radio, AM/FM stereo ETR w/seek & scan, digital clock and 4-speakers	S	S			
Roller shade, luggage compartment concealment	S	-			
Seat, contoured-shell cloth bucket with lateral support and back-angle adjustment	S	S			
Steering wheel, leather-wrapped	S	S			
Steering wheel and column, tilt-telescopic	S	S			
Windows, power	S	S			
S - Standard A - Available					

MECHANICAL FEATURES			Hatchback	Coupe	Convertible
Anti-theft system, vehicle with encoded key	S	S			
Audible wear sensors, front disc brakes	S	S			
Axle, limited slip differential	S	S			
Battery, Delco Freedom II Plus	S	S			
Body structure, sturdy uniframe 100% galvanized and dip-painted	S	S			
Brakes, power anti-lock disc brakes at all four wheels	S	S			
Computer Command Control system	S	S			
Engine, 5.7 Litre TPI V8	S	S			
Engine components:					
Aluminum cylinder heads	S	S			
Aluminum intake manifold with tuned runners	S	S			
Magnesium valve rocker covers	S	S			
Outside-air induction system	S	S			
Roller valve lifters	S	S			
Full pump, electric in-tank twin turbine	S	S			
Generator, Delcotron with built-in solid state regulator	S	S			
Ignition System, High Energy	S	S			
Recovery system, coolant	S	S			
Steering, power rack-and-pinion	S	S			
Suspension Equipment:					
Fully independent four-wheel	S	S			
Monoleaf glass-epoxy composite transverse front and rear springs	S	S			
Forged aluminum front and rear suspension arms	S	S			
Tires: (steel-belted radial ply) P255/50VR-16 highway blackwall	S	S			
Transmission, 4-speed overdrive automatic	S	S			
Windshield wiper system, intermittent	S	S			
CORVETTE INDIVIDUAL OPTIONS			Hatchback	Coupe	Convertible
Air conditioning, electronic	A	A			
Cooler, engine oil: included with performance handling package	A	A			
Cooling, heavy-duty engine & transmission: included with performance handling package	A	A			
Door locks, power	A	A			
Heater, engine block	A	A			
Mirrors:					
Heated electric remote control outside	S	A			
Visor vanity driver's side illuminated	A	A			
Paint, custom two-tone	A	-			
Radio equipment:					
AM/FM stereo ETR w/seek & scan, digital display, clock, cassette stereo tape player and 4-speaker system	A	A			
AM/FM stereo ETR w/seek & scan, digital display, clock, cassette stereo tape player and Delco-Bose 4-speaker system	A	A			
Roof panel					
Transparent lift-off	A	-			
Dual removable roof package: includes transparent and non-transparent lift-off panels	A	-			

INDIVIDUAL OPTIONS (cont'd)			Hatchback	Coupe	Convertible
Seats:					
Power driver's side, six-way	A	A			
Power driver's and passenger's six-way	A	A			
Reclining front bucket front, leather trim	A	A			
Adjustable sports seats, leather trim	A	A			
Speed control, electronic	A	A			
Suspensions:					
Special Delco-Bilstein, shock absorbers	A	-			
Performance handling	A	-			
Sport handling package	A	-			
Tire pressure indicator, low	A	A			
Transmission: 4-speed overdrive manual	A	A			
S - Standard A - Available					
			Transmissions		
			4-Speed Overdrive Manual	4-Speed Automatic w/overdrive	
POWER TEAMS	Ordering Code	Availability			
Engine	L98	S	A	S	
5.7 Litre					

SAFETY FEATURES

Occupant Protection

- Safety belts for driver and right front passenger (driver's side includes visual and audible warning system)
- Lap belts at each rear-seat position (and centre front, when applicable)
- Energy-absorbing steering column
- Energy-absorbing instrument panel
- Energy-absorbing front seat-back tops
- Laminated safety windshield glass and tempered safety side and rear window glass
- Safety interlocking door latches
- Passenger-guard inside door lock handles
- Inertia-locking, folding front seat-backs
- Safety armrests
- Head restraints, driver and right front passenger (adjustable/integral).

Accident Avoidance

- Side marker lights and reflectors
- Parking lamps that illuminate with headlamps
- Four-way hazard warning flasher
- Backup lights
- Centre high-mounted stop lamp
- Directional signal control with lane-change feature
- Windshield defroster, washer and dual-speed wipers (pulse type wipers on Corvette)
- Inside rearview mirror with vinyl-bonded glass
- Outside left and right rearview mirrors
- Brake system with dual master cylinder and warning light
- Starter safety switch
- Dual-action hood-latch system (rear opening on Corvette)
- Low-glare finish on instrument panel top, inside windshield mouldings, wiper arms/blades, metallic steering wheel surfaces
- Illuminated heater and defroster controls
- Tires with built-in tread-wear indicators.

Theft Deterrence

- Audible reminder for ignition key removal
- Theft-deterrent steering column lock
- Visible vehicle identification number.
- Vehicle and anti-theft system (VATS) on Corvette

For Your Protection*

1. New Vehicle Limited Warranty — 12 months or 20,000 kilometres, whichever comes first.
2. Powertrain Coverage — 36 months or 60,000 kilometres, whichever comes first on gasoline engines (\$100 deductible).
3. Owner Assistance Program.
4. Special Policy Adjustment Program.

*Ask your dealer for details.



General Motors recognizes that taking delivery of your new vehicle is a significant event. To ensure that your delivery experience contributes to your overall satisfaction, we have implemented a "Commitment to Excellence" Delivery Procedure. This procedure includes a thorough new vehicle inspection by both the service technician and salesperson, a full tank of fuel, and a follow-up survey to determine your satisfaction with the delivery experience.

General Motors "Commitment to Excellence" is yet another excellent reason to "Look at GM Today".



5-year unlimited kilometres corrosion perforation warranty. On all 1987 GM passenger cars. Ask your dealer for details.

A WORD ABOUT THIS CATALOGUE

The vehicles described in this catalogue incorporate components produced by General Motors of Canada Limited and related companies and suppliers. During manufacturing, different components than initially scheduled may be used.

All illustrations and specifications contained in this catalogue are based on the latest product information at time of publication approval. The right is reserved to make changes at any time, without notice, in prices, colours, materials, equipment, specifications and models, and to discontinue models. Some of the



While there are many service contracts available on the market today, *there is only one which gives you an agreement directly with General Motors.* It is the one with the GM Protection Plan logo shown above. This logo on all Plan material assures you that the service contract you are buying is the GM Plan, we believe the finest such program available to GM owners.

The GM Protection Plan provides additional protection during and after the new vehicle limited warranties. Ask your General Motors dealer for details and information about the *genuine GM Protection Plan.*

GMAC

Financing or Leasing, it's as easy as GMAC

The good feeling that comes when you buy or lease a new GM vehicle can be enhanced when it comes to making the financial arrangements.

Which is why so many people finance with General Motors Acceptance Corporation. With GMAC it's done right in the showroom. Terms are tailor-made to suit your personal needs. You can choose your own monthly payment date. And the rates are friendly as can be.

So when the time comes, just tell us "I want GMAC". We'll take it from there while you relax.

equipment shown or described throughout this catalogue is available at extra cost or can only be ordered in conjunction with the other optional equipment. Some options may not be available when your vehicle is built. Check with your dealer for complete information.

A WORD ABOUT ENGINES

Chevrolets are equipped with engines produced at facilities operated by GM car groups, subsidiaries or affiliated companies worldwide.

XV Winter Olympics Calgary '88

General Motors of Canada is proud of our involvement with major events in Canada, from Expo '67 in Montreal to Expo '86 in Vancouver, from the 1976 Olympics to the Winter Olympics in Calgary in 1988.

General Motors is a sponsor and Official Supplier of Transportation to the XV Olympic Winter Games in Calgary in 1988. This world event will be a showcase for Canadian athletes, for all of Canada and all Canadians — a symbol of Canadian excellence.

At General Motors we are committed to excellence. And to Canada.



GM Autoplex: A Pledge to Canada. An Example to the World.

Through North America, General Motors is embarking on a new manufacturing program that will set new standards for building cars and trucks right into the next century.

In Canada, it's called GM Autoplex. Although our technology and techniques are ultra modern, our philosophy still holds true to the original standard set by Col. Sam McLaughlin, GM Canada's first president — "One grade only, and that the best".

That philosophy, exemplified in the GM Canada workforce, was one of the main reasons Canada was chosen to spearhead this world-class program.

Consider the calendar of events. Starting in 1987, GM Autoplex will be part of our new truck program. In 1988, it will include a new GM world-class car program. By 1989, when all the key elements have been put in place, GM Autoplex will be the largest single automotive manufacturing complex in North America.

But the philosophy goes beyond even a project of this magnitude. Our on-going objective is to make sure that every vehicle that we make reflects GM's standard of excellence.

To maintain that excellence, we are insisting on more supplier involvement at the early stages of production, more training for the employees and greater use of sophisticated technology like robotics and fibre optics.

This is GM's on-going commitment to excellence, to Canada and to you. A commitment to produce the best quality cars and trucks possible at a price that's competitive.



Way to Go Chevy!

Chevrolet



Canada



Way to Go Chevy!



CAMARO • CAVALIER Z24 • MONTE CARLO SS • CORVETTE



P E R F O R M A N C E C A R S

