



**2022**  
**SILVERADO HD**

# THE STRONGEST, MOST CAPABLE SILVERADO HD EVER.

That's a bold statement, especially when you consider the heavy-duty strength and capability Silverado HD has displayed for decades.

It's also true. Silverado HD has powertrain options that don't know the meaning of the word "quit." Then there's the ability to pull up to 36,000 lbs!<sup>1</sup> (18,500 lbs. as shown), with standard and available trailering features that provide confidence every time you hitch up. And don't forget the highly functional Durabed, plus the new available Multi-Flex Tailgate with six different functions designed to help you load, unload and access the cargo bed more easily.

Silverado HD is as capable as they come.



2500 HD Crew Cab Standard Bed LTZ 4x4 in Northsky Blue Metallic with available Duramax® 6.6L Turbo-Diesel V8 engine, additional available features and dealer-installed 4-inch chrome assist steps from Chevrolet Accessories<sup>2</sup>

<sup>1</sup> Requires Silverado 3500 HD Regular Cab WT 2WD DRW with available Duramax 6.6L Turbo-Diesel V8 engine, Max Trailering Package and gooseneck hitch. Maximum trailering ratings are intended for comparison purposes only. Before you buy a vehicle or use it for trailering, carefully review the Trailering section of the Owner's Manual. The trailering capacity of your specific vehicle may vary. The weight of passengers, cargo and options or accessories may reduce the amount you can trailer. <sup>2</sup> Chevrolet Accessories are dealer-installed and covered by the GM 3-year/36,000-mile (whichever comes first) New Vehicle Limited Warranty when ordered with your new Silverado. See your dealer for details.

Due to current supply chain shortages, certain features shown have limited or late availability, or are no longer available. See the window label or a dealer regarding the features on an individual vehicle.



## INTRODUCING SILVERADO HD

# SILVERADO HD AT A GLANCE.

- Five models: WT, Custom, LT, LTZ and High Country
- 2WD or 4x4 available on all models
- 6.6L V8 gas engine and 6-speed transmission:
  - 401 horsepower and 464 lb.-ft. of torque
- Available Duramax 6.6L Turbo-Diesel V8 engine and Allison® 10-speed transmission:
  - 445 horsepower and 910 lb.-ft. of torque
- 7,442 lbs. of maximum payload<sup>1</sup>
- 36,000 lbs. maximum trailering weight<sup>2,3</sup> with available diesel engine
- Every Silverado HD Dually paired with the available Duramax 6.6L V8 can pull over 30,000 lbs.<sup>3</sup>
- 18,510 lbs. maximum trailering weight<sup>3,4</sup> with gas engine
- Available Advanced Trailering System with an In-Vehicle App<sup>5</sup> and myChevrolet Mobile App<sup>5</sup>
- 8 available cameras provide up to 15 unique views<sup>6</sup>
- Durabed with 12 standard tie-downs
- Cargo volume:<sup>7</sup>
  - Standard Bed: 69.6 cu. ft.
  - Long Bed: 83.5 cu. ft.
- Multi-Flex Tailgate with 6 different functions available on all models
- Available segment-exclusive power-up/-down tailgate



Available Multi-Flex Tailgate.



Available Rear Side View (Turn Signal Activated)<sup>6</sup> See page 9 for more camera views.

<sup>1</sup> Requires Silverado 3500 HD Regular Cab Long Bed 2WD DRW. These maximum payload ratings are intended for comparison purposes only. Before you buy a vehicle or use it to haul people or cargo, carefully review the Vehicle Loading section of the Owner's Manual and check the carrying capacity of your specific vehicle on the label on the inside of the driver door jamb. <sup>2</sup> Requires Silverado 3500 HD Regular Cab WT 2WD DRW with available Duramax 6.6L Turbo-Diesel V8 engine, Max Trailering Package and gooseneck hitch. <sup>3</sup> Maximum trailering ratings are intended for comparison purposes only. Before you buy a vehicle or use it for trailering, carefully review the Trailering section of the Owner's Manual. The trailering capacity of your specific vehicle may vary. The weight of passengers, cargo and options or accessories may reduce the amount you can trailer. <sup>4</sup> Requires Silverado 2500 HD Regular Cab Long Bed with 17" wheels and available fifth-wheel/gooseneck hitch. <sup>5</sup> App functionality and features vary with vehicle equipment and trim level. Data connection may be required. Some features require active service plan and working electrical system. User terms and limitations apply. <sup>6</sup> Safety or driver assistance features are no substitute for the driver's responsibility to operate the vehicle in a safe manner. Read the vehicle Owner's Manual for important feature limitations and information. Some camera views require available accessory camera and installation. Not compatible with all trailers. See your dealer for details. <sup>7</sup> Cargo and load capacity limited by weight and distribution.

## MODELS

### FIVE MODELS TO CHOOSE FROM.

Strength and capability are standard. From there, you get to decide which Silverado HD is right for you.



#### WT

Pick a job. Any job.

- Heavy-duty air filter with air filtration monitoring
- External engine and transmission oil coolers
- [Trailer Package](#)
- Automatic locking rear differential
- Fully boxed high-strength steel frame
- Durabed with 12 standard tie-downs
- Integrated BedSteps and CornerStep rear bumper
- Cargo area lighting
- Vertical trailing mirrors
- Available Multi-Flex Tailgate
- Durable vinyl or available cloth seats and a rubberized-vinyl floor for easy cleanup
- Rear Vision Camera<sup>1</sup>
- Available Bed View Camera<sup>1</sup>
- Available [WT Safety Package](#)
- Available [WT Convenience Package](#)



#### CUSTOM (2500 HD ONLY)

Hardworking. Good-looking.

- Available on Double Cab and Crew Cab models
- 20-inch machined-aluminum wheels with all-terrain tires
- Power-adjustable vertical trailing mirrors with heated upper glass and integrated turn signal indicators
- Available Multi-Flex Tailgate
- Cloth seating surfaces
- Power windows and door locks
- Remote Keyless Entry
- Available remote vehicle starter system
- Available Bed View Camera<sup>1</sup>
- Available [Custom Value Package](#)
- Available [Safety Confidence Package](#)



#### LT

Classic appeal. Complete capability.

- Power lock and release EZ Lift tailgate
- Cloth seating surfaces or available leather-appointed seating surfaces
- 8-inch diagonal color touch-screen display
- Available Multi-Flex Tailgate
- Available 20-inch aluminum wheels
- Available 120-volt bed-mounted outlet
- Available roof marker lamps
- Available fog lamps
- Available [Convenience Package](#)
- Available [Safety Package](#)
- Available [All Star Edition](#)
- Available [Z71 Off-Road and Protection Package](#)
- Available [Duramax and Appearance Package](#)

Available Special Editions

[Midnight Edition](#)

[Z71 Sport Edition](#)

[Z71 Chrome Sport Edition](#)

<sup>1</sup> Safety or driver assistance features are no substitute for the driver's responsibility to operate the vehicle in a safe manner. Read the vehicle Owner's Manual for important feature limitations and information.



## MODELS (CONTINUED)

### FIVE MODELS TO CHOOSE FROM.

Strength and capability are standard. From there, you get to decide which Silverado HD is right for you.



#### LTZ

Premium style. Hardworking substance.

- [Advanced Trailering System](#)
- Hitch Guidance with Hitch View<sup>1</sup>
- LED headlamps, taillamps, daytime running lamps and fog lamps
- Available power-up/-down tailgate or Multi-Flex Tailgate
- Available Bed View Camera<sup>1</sup>
- Keyless Open and Start
- 10-way power adjusters for driver and front outboard passenger seats
- Perforated leather-appointed front seats
- Memory for power driver seat and exterior mirror settings
- Available [Safety Package](#)
- Available [Technology Package](#)

Available Special Editions  
[Midnight Edition](#)  
[Z71 Sport Edition](#)  
[Z71 Chrome Sport Edition](#)  
[Carhartt® Edition<sup>2</sup>](#)



#### HIGH COUNTRY

The perfect combination of luxury and capability.

- [Advanced Trailering System](#)
- Hitch Guidance with Hitch View<sup>1</sup>
- Chrome and bronze grille
- 20-inch polished-aluminum wheels
- 6-inch chrome assist steps or available power-retractable assist steps
- Power-up/-down tailgate or available Multi-Flex Tailgate
- Bed View Camera<sup>1</sup>
- LED cargo area lighting
- Keyless Open and Start
- Leather seating surfaces
- Unique Jet Black/Umber or Jet Black interior
- HD Surround Vision<sup>1</sup>
- Bose premium 7-speaker sound system
- SiriusXM<sup>®</sup> with 360L<sup>3</sup> – 3-month trial
- Rear Cross Traffic Alert<sup>1</sup> and Lane Change Alert with Side Blind Zone Alert<sup>1</sup>
- Available [Safety Package II](#)
- Available [High Country Deluxe](#)

<sup>1</sup> Safety or driver assistance features are no substitute for the driver's responsibility to operate the vehicle in a safe manner. Read the vehicle Owner's Manual for important feature limitations and information. <sup>2</sup> 2500 HD Crew Cab only. <sup>3</sup> If you decide to continue service after your trial, your selected subscription plan will automatically renew thereafter. You will be charged at then-current rates. Fees and taxes apply. To cancel you must call SiriusXM at 1-866-635-2349. See SiriusXM Customer Agreement for complete terms at [siriusxm.com](http://siriusxm.com). All fees and programming subject to change. Certain features require a SiriusXM subscription and the Chevrolet Connected Access plan. See [siriusxm.com](http://siriusxm.com) and [onstar.com](http://onstar.com) for details and limitations.

Due to current supply chain shortages, certain features shown have limited or late availability, or are no longer available. See the window label or a dealer regarding the features on an individual vehicle.

## MODEL AVAILABILITY

● AVAILABLE – NOT AVAILABLE

### REGULAR CAB – LONG BED



TRIM	2500 HD	3500 HD SRW	3500 HD DRW	STANDARD ENGINE	AVAILABLE ENGINE	2WD	4x4
WT	●	●	●	6.6L V8 gas	Duramax 6.6L V8	●	●
LT	●	●	●	6.6L V8 gas	Duramax 6.6L V8	●	●

### DOUBLE CAB – STANDARD BED



TRIM	2500 HD	3500 HD SRW	3500 HD DRW	STANDARD ENGINE	AVAILABLE ENGINE	2WD	4x4
WT	●	–	–	6.6L V8 gas	Duramax 6.6L V8	●	●
Custom	●	–	–	6.6L V8 gas	Duramax 6.6L V8	●	●
LT	●	–	–	6.6L V8 gas	Duramax 6.6L V8	●	●
LTZ	●	–	–	6.6L V8 gas	Duramax 6.6L V8	●	●

### DOUBLE CAB – LONG BED



TRIM	2500 HD	3500 HD SRW	3500 HD DRW	STANDARD ENGINE	AVAILABLE ENGINE	2WD	4x4
WT	●	●	●	6.6L V8 gas	Duramax 6.6L V8	●	●
Custom	●	–	–	6.6L V8 gas	Duramax 6.6L V8	●	●
LT	●	●	●	6.6L V8 gas	Duramax 6.6L V8	●	●
LTZ	●	–	–	6.6L V8 gas	Duramax 6.6L V8	●	●

### CREW CAB – STANDARD BED



TRIM	2500 HD	3500 HD SRW	3500 HD DRW	STANDARD ENGINE	AVAILABLE ENGINE	2WD	4x4
WT	●	●	–	6.6L V8 gas	Duramax 6.6L V8	●	●
Custom	●	–	–	6.6L V8 gas	Duramax 6.6L V8	●	●
LT	●	●	–	6.6L V8 gas	Duramax 6.6L V8	●	●
LTZ	●	●	–	6.6L V8 gas	Duramax 6.6L V8	●	●
High Country	●	●	–	6.6L V8 gas	Duramax 6.6L V8	–	●

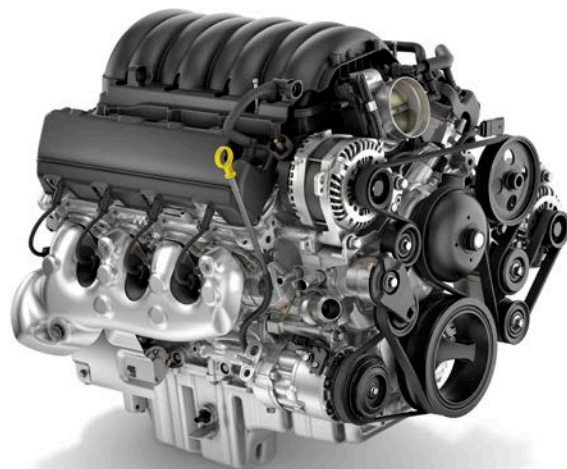
### CREW CAB – LONG BED



TRIM	2500 HD	3500 HD SRW	3500 HD DRW	STANDARD ENGINE	AVAILABLE ENGINE	2WD	4x4
WT	●	●	●	6.6L V8 gas	Duramax 6.6L V8	●	●
Custom	●	–	–	6.6L V8 gas	Duramax 6.6L V8	●	●
LT	●	●	●	6.6L V8 gas	Duramax 6.6L V8	●	●
LTZ	●	●	●	6.6L V8 gas	Duramax 6.6L V8	●	●
High Country	●	●	●	6.6L V8 gas	Duramax 6.6L V8	–	●

Some features shown may have limited, late or no availability. See dealer for feature availability.

## ENGINE SPECIFICATIONS



### **6.6L V8 GAS** Standard on all 2500 HD and 3500 HD models.

Heavy-duty 6-speed automatic transmission

401 hp @ 5200 rpm

464 lb.-ft. of torque @ 4000 rpm

Displacement: 6564 cc (400 cu. in.)

Bore and stroke: 103.25 mm x 98 mm (4.06 in. x 3.86 in.)

Compression ratio: 10.75:1

Block: Cast-iron with nodular iron main caps

Cylinder head: Cast-aluminum

Valvetrain: Overhead valve with Variable Valve Timing (VVT)

Fuel delivery: Direct Injection

Recommended fuel: Regular unleaded or E85



### **DURAMAX 6.6L TURBO-DIESEL V8** Available on 2500 HD and 3500 HD models.

Allison® 10-speed automatic transmission

445 hp @ 2800 rpm

910 lb.-ft. of torque @ 1600 rpm

Displacement: 6619 cc (403 cu. in.)

Bore and stroke: 103 mm x 99 mm (4.05 in. x 3.89 in.)

Compression ratio: 16.0:1

Block: Cast-iron

Cylinder head: Cast-aluminum

Valvetrain: Overhead valve with 4 valves per cylinder

Fuel delivery: Direct Injection with high-pressure common rail

Recommended fuel: Ultra-low-sulfur diesel



## TRAILERING FEATURES

### A COMPLETE TOWING TOOL KIT.

Silverado HD offers advanced towing tech to give you peace of mind when you're pulling a heavy load.

- Standard Trailering Package includes a trailer hitch with a 2.5-inch receiver and a 2-inch insert, a 7-pin wiring connector and Hitch Guidance<sup>1</sup>
- Vertical trailering mirrors are standard on all trims
- Additional standard features include StabiliTrak<sup>®</sup> with Electronic Trailer Sway Control and Hill Start Assist, Tow/Haul mode and Auto Grade Braking
- Optimized cargo bed rail height allows clearance for fifth-wheel and gooseneck trailers
- Integrated BedSteps enable easy access to the front of the bed, even with a fifth-wheel or gooseneck trailer hitched
- Industry-first Trailering Information Label located on the driver-side door jamb provides vehicle-specific information along with vital towing capabilities
- The available Advanced Trailering System with an In-Vehicle App<sup>2</sup> offers customized trailer profiles, pre-departure checklists, trailer lighting diagnostics, a Trailer Tire Pressure Monitoring System<sup>3</sup> module, and the ability to create and sync trailer profiles with the myChevrolet Mobile App<sup>4</sup>
- Additional available features include Trailer Theft Alert, Electric Parking Brake hookup assist and Brake Gain Memory on the integrated trailer brake controller



Optimized cargo bed rail height.



Available Advanced Trailering System.

### Trailering Guide >

<sup>1</sup> Safety or driver assistance features are no substitute for the driver's responsibility to operate the vehicle in a safe manner. Read the vehicle Owner's Manual for important feature limitations and information. <sup>2</sup> App functionality and features vary with vehicle equipment and trim level. Data connection may be required. Some features require active service plan and working electrical system. User terms and limitations apply. <sup>3</sup> Requires available Trailer Tire Pressure Monitor Sensors. <sup>4</sup> Available on select Apple and Android devices. Service availability, features and functionality vary by vehicle, vehicle equipment, trim level, device and the plan you are enrolled in. Some features may require a working electrical system. User terms apply. Device data connection required. Visit [onstar.com](https://onstar.com) for details and limitations.



## CAMERA TECHNOLOGIES

### CAMERA VIEWS TO HELP YOU TOW WITH CONFIDENCE.

Silverado HD offers advanced camera technologies, with 8 available cameras that give you up to 15 unique views. From hitching to driving to parking, these features are designed to help make your towing job easier from start to finish.

- Four available hitch views<sup>1</sup>

- Hitch View
- Surround View
- Rear Top-Down View
- Bed View

- Six available driving views<sup>1</sup>

- Transparent Trailer View<sup>2</sup>
- Front Camera View
- Pic-In-Pic Side View<sup>3</sup>
- Rear Camera Mirror
- Rear Trailer View<sup>3</sup>
- Inside Trailer View<sup>3</sup>

- Five available parking views<sup>1</sup>

- Rear Camera View
- Rear Side View/Rear Side View (Turn Signal Activated)
- Bowl View
- Front Side View
- Front Top-Down View



Transparent Trailer View<sup>2</sup>



Rear Trailer View<sup>3</sup>

## Camera Technologies >

<sup>1</sup> Safety or driver assistance features are no substitute for the driver's responsibility to operate the vehicle in a safe manner. The driver should remain attentive to traffic, surroundings and road conditions at all times. Visibility, weather and road conditions may affect feature performance. Read the vehicle Owner's Manual for more important feature limitations and information. Some camera views require available accessory camera and installation. Not compatible with all trailers. See your dealer for details.

<sup>2</sup> Requires available Chevrolet Accessory Camera and installation. Not compatible with all trailers. Customers can see their dealer for full details. <sup>3</sup> Requires available Chevrolet Accessory Camera and installation. Customers can see their dealer for full details.

## PAYLOAD & TRAILERING WEIGHT RATINGS – 2500 HD

MODEL	ENGINE	WHEEL SIZE	GVWR (LBS.) <sup>1</sup>	MAX PAYLOAD (LBS.) <sup>2</sup>	MAX CONVENTIONAL TRAILERING (LBS.) <sup>3</sup>	MAX GOOSENECK/ 5TH-WHEEL TRAILERING (LBS.) <sup>3</sup>
2500 HD REGULAR CAB						
Long Bed 2WD	6.6L V8 gas	17"/18"	9,900	3,757	14,500	17,370
	6.6L V8 gas	17"	10,000	3,857	14,500	17,370
	6.6L V8 gas	18"/20"	10,150	3,979	14,500	17,340
	Duramax 6.6L V8	17"	10,550	3,544	14,500	18,510
	Duramax 6.6L V8	18"/20"	10,750	3,715	14,500	18,480
Long Bed 4x4	6.6L V8 gas	17"/18"	10,000	3,544	14,500	17,060
	6.6L V8 gas	17"	10,250	3,794	14,500	17,060
	6.6L V8 gas	18"/20"	10,450	3,965	14,500 <sup>4</sup>	17,030
	Duramax 6.6L V8	17"	10,900	3,581	14,500	18,190
	Duramax 6.6L V8	18"/20"	11,025	3,715	14,500 <sup>4</sup>	18,160

MODEL	ENGINE	WHEEL SIZE	GVWR (LBS.) <sup>1</sup>	MAX PAYLOAD (LBS.) <sup>2</sup>	MAX CONVENTIONAL TRAILERING (LBS.) <sup>3</sup>	MAX GOOSENECK/ 5TH-WHEEL TRAILERING (LBS.) <sup>3</sup>
2500 HD DOUBLE CAB						
Standard Bed 2WD	6.6L V8 gas	17"/18"	10,000	3,541	14,500	17,050
	6.6L V8 gas	17"	10,050	3,591	14,500	17,050
	6.6L V8 gas	18"/20"	10,250	3,762	14,500	17,000
	Duramax 6.6L V8	17"	10,700	3,390	14,500	18,200
	Duramax 6.6L V8	18"/20"	10,900	3,561	14,500	18,170
Standard Bed 4x4	6.6L V8 gas	17"/18"	10,000	3,226	14,500	16,740
	6.6L V8 gas	17"	10,350	3,576	14,500	16,740
	6.6L V8 gas	18"/20"	10,550	3,747	14,500 <sup>4</sup>	16,710
	Duramax 6.6L V8	17"/18"	10,000	2,375	14,500	12,610
	Duramax 6.6L V8	17"	11,000	3,375	14,500	17,890
	Duramax 6.6L V8	18"/20"	11,200	3,546	14,500 <sup>4</sup>	17,860
Long Bed 2WD	6.6L V8 gas	17"/18"	10,000	3,420	14,500	16,930
	6.6L V8 gas	17"	10,200	3,620	14,500	16,930
	6.6L V8 gas	18"/20"	10,400	3,792	14,500	16,900
	Duramax 6.6L V8	17"	10,900	3,424	14,500	18,040
	Duramax 6.6L V8	18"/20"	11,100	3,595	14,500	18,010
Long Bed 4x4	6.6L V8 gas	17"/18"	10,000	3,133	14,500	16,650
	6.6L V8 gas	17"	10,500	3,633	14,500	16,650
	6.6L V8 gas	18"/20"	10,750	3,854	14,500 <sup>4</sup>	16,620
	Duramax 6.6L V8	17"/18"	10,000	2,236	14,500	11,690
	Duramax 6.6L V8	17"	11,200	3,436	14,500	17,750
	Duramax 6.6L V8	18"/20"	11,450	3,657	14,500 <sup>4</sup>	17,720

## Trailering Guide ➤

<sup>1</sup> Maximum Gross Vehicle Weight Rating (GVWR). When properly equipped; includes weight of vehicle, passengers, cargo and equipment. <sup>2</sup> These maximum payload ratings are intended for comparison purposes only. Before you buy a vehicle or use it to haul people or cargo, carefully review the Vehicle Loading section of the Owner's Manual and check the carrying capacity of your specific vehicle on the label on the inside of the driver door jamb. <sup>3</sup> Maximum trailering ratings are intended for comparison purposes only. Before you buy a vehicle or use it for trailering, carefully review the Trailering section of the Owner's Manual. The trailering capacity of your specific vehicle may vary. The weight of passengers, cargo and options or accessories may reduce the amount you can trailer. <sup>4</sup> With available 18" mud-terrain tires (QG3), maximum conventional towing is 12,000 lbs.

## PAYLOAD & TRAILERING WEIGHT RATINGS – 2500 HD

MODEL	ENGINE	WHEEL SIZE	GVWR (LBS.) <sup>1</sup>	MAX PAYLOAD (LBS.) <sup>2</sup>	MAX CONVENTIONAL TRAILERING (LBS.) <sup>3</sup>	MAX GOOSENECK/ 5TH-WHEEL TRAILERING (LBS.) <sup>3</sup>
2500 HD CREW CAB						
Standard Bed 2WD	6.6L V8 gas	17"/18"	10,000	3,429	14,500	16,940
	6.6L V8 gas	17"	10,150	3,579	14,500	16,940
	6.6L V8 gas	18"/20"	10,350	3,751	14,500	16,900
	Duramax 6.6L V8	17"	10,000	2,532	14,500	13,660
	Duramax 6.6L V8	18"/20"	10,000	2,561	18,140	13,470
	Duramax 6.6L V8	17"	10,800	3,332	14,500	18,050
	Duramax 6.6L V8	18"/20"	11,050	3,553	18,500	18,500
Standard Bed 4x4	6.6L V8 gas	17"/18"	10,000	3,139	14,500	16,650
	6.6L V8 gas	17"	10,450	3,589	14,500	16,650
	6.6L V8 gas	18"/20"	10,650	3,760	14,500 <sup>4</sup>	16,620
	Duramax 6.6L V8	17"	10,000	2,241	14,500	11,720
	Duramax 6.6L V8	18"/20"	10,000	2,213	17,850	11,530
	Duramax 6.6L V8	17"	11,150	3,391	14,500	17,750
	Duramax 6.6L V8	18"/20"	11,350	3,563	18,500 <sup>4</sup>	18,500
Standard Bed High Country 4x4	6.6L V8 gas	20"	10,650	3,413	14,500	16,280
	Duramax 6.6L V8	20"	11,350	3,229	18,500	18,310

MODEL	ENGINE	WHEEL SIZE	GVWR (LBS.) <sup>1</sup>	MAX PAYLOAD (LBS.) <sup>2</sup>	MAX CONVENTIONAL TRAILERING (LBS.) <sup>3</sup>	MAX GOOSENECK/ 5TH-WHEEL TRAILERING (LBS.) <sup>3</sup>
2500 HD CREW CAB (CONTINUED)						
Long Bed 2WD	6.6L V8 gas	17"/18"	10,000	3,329	14,500	16,840
	6.6L V8 gas	17"	10,300	3,629	14,500	16,840
	6.6L V8 gas	18"/20"	10,500	3,800	14,500	16,810
	Duramax 6.6L V8	17"	10,000	2,365	14,500	12,550
	Duramax 6.6L V8	18"/20"	10,000	2,336	17,970	12,350
	Duramax 6.6L V8	17"	11,000	3,365	14,500	17,880
	Duramax 6.6L V8	18"/20"	11,200	3,536	18,500	18,500
Long Bed 4x4	6.6L V8 gas	17"/18"	10,000	3,040	14,500	16,550
	6.6L V8 gas	17"	10,650	3,690	14,500	16,550
	6.6L V8 gas	18"/20"	10,850	3,862	14,500 <sup>4</sup>	16,520
	Duramax 6.6L V8	17"	10,000	2,076	14,500	10,620
	Duramax 6.6L V8	18"/20"	10,000	2,047	16,560	10,240
	Duramax 6.6L V8	17"	11,350	3,426	14,500	17,590
	Duramax 6.6L V8	18"/20"	11,550	3,597	18,500 <sup>4</sup>	18,500
Long Bed High Country 4x4	6.6L V8 gas	20"	10,850	3,506	14,500	16,170
	Duramax 6.6L V8	20"	11,550	3,337	18,500	18,500

## Trailering Guide ➤

<sup>1</sup> Maximum Gross Vehicle Weight Rating (GVWR). When properly equipped; includes weight of vehicle, passengers, cargo and equipment. <sup>2</sup> These maximum payload ratings are intended for comparison purposes only. Before you buy a vehicle or use it to haul people or cargo, carefully review the Vehicle Loading section of the Owner's Manual and check the carrying capacity of your specific vehicle on the label on the inside of the driver door jamb. <sup>3</sup> Maximum trailering ratings are intended for comparison purposes only. Before you buy a vehicle or use it for trailering, carefully review the Trailering section of the Owner's Manual. The trailering capacity of your specific vehicle may vary. The weight of passengers, cargo and options or accessories may reduce the amount you can trailer. <sup>4</sup> With available 18" mud-terrain tires (QG3), maximum conventional towing is 12,000 lbs.



## PAYLOAD & TRAILERING WEIGHT RATINGS – 3500 HD

MODEL	ENGINE	WHEEL SIZE	GVWR (LBS.) <sup>1</sup>	MAX PAYLOAD (LBS.) <sup>2</sup>	MAX CONVENTIONAL TRAILERING (LBS.) <sup>3</sup>	MAX GOOSENECK/ 5TH-WHEEL TRAILERING (LBS.) <sup>3</sup>
<b>3500 HD REGULAR CAB</b>						
Long Bed 2WD SRW	6.6L V8 gas	18"/20"	10,750	4,481	14,500	17,200
	Duramax 6.6L V8	18"/20"	11,500	4,215	14,500	21,500
Long Bed 4x4 SRW	6.6L V8 gas	18"/20"	11,100	4,534	14,500	16,950
	Duramax 6.6L V8	18"/20"	11,800	4,217	14,500	21,500
Long Bed 2WD DRW	6.6L V8 gas	17"	14,000	7,442	16,800	16,800
	Duramax 6.6L V8	17" (5th-Wheel)	14,000	6,523	20,000	32,000
	Duramax 6.6L V8	17" (Gooseneck)	14,000	6,465	20,000	36,000 <sup>4</sup>
Long Bed 4x4 DRW	6.6L V8 gas	17"	14,000	7,145	16,800	16,710
	Duramax 6.6L V8	17"	14,000	6,196	20,000	31,760
<b>3500 HD DOUBLE CAB</b>						
Long Bed 2WD SRW	6.6L V8 gas	18"/20"	11,100	4,373	14,500	16,700
	Duramax 6.6L V8	18"/20"	11,850	4,130	14,500	21,490
Long Bed 4x4 SRW	6.6L V8 gas	18"/20"	11,400	4,391	14,500	16,500
	Duramax 6.6L V8	18"/20"	12,150	4,148	14,500	21,210
Long Bed 2WD DRW	6.6L V8 gas	17"	14,000	6,985	16,400	16,400
	Duramax 6.6L V8	17"	14,000	6,059	20,000	31,500
Long Bed 4x4 DRW	6.6L V8 gas	17"	14,000	6,703	16,390	16,270
	Duramax 6.6L V8	17"	14,000	5,777	20,000	31,340

MODEL	ENGINE	WHEEL SIZE	GVWR (LBS.) <sup>1</sup>	MAX PAYLOAD (LBS.) <sup>2</sup>	MAX CONVENTIONAL TRAILERING (LBS.) <sup>3</sup>	MAX GOOSENECK/ 5TH-WHEEL TRAILERING (LBS.) <sup>3</sup>
<b>3500 HD CREW CAB</b>						
Standard Bed 2WD SRW	6.6L V8 gas	18"/20"	11,000	4,316	14,500	16,700
	Duramax 6.6L V8	18"/20"	11,750	4,135	20,000	21,500
Standard Bed 4x4 SRW	6.6L V8 gas	18"/20"	11,350	4,365	14,500	16,530
	Duramax 6.6L V8	18"/20"	12,100	4,185	20,000	21,300
Standard Bed High Country 4x4 SRW	6.6L V8 gas	20"	11,350	4,068	14,500	16,230
	Duramax 6.6L V8	20"	12,100	3,915	20,000	21,030
Long Bed 2WD SRW	6.6L V8 gas	18"/20"	11,150	4,333	14,500	16,700
	Duramax 6.6L V8	18"/20"	11,900	4,013	20,000	21,330
Long Bed 4x4 SRW	6.6L V8 gas	18"/20"	11,500	4,398	14,500	16,410
	Duramax 6.6L V8	18"/20"	12,250	4,078	20,000	21,040
Long Bed High Country 4x4 SRW	6.6L V8 gas	20"	11,500	4,093	14,500	16,110
	Duramax 6.6L V8	20"	12,250	3,947	20,000	20,910
Long Bed 2WD DRW	6.6L V8 gas	17"	14,000	6,894	16,300	16,200
	Duramax 6.6L V8	17"	14,000	5,892	20,000	31,400
Long Bed 4x4 DRW	6.6L V8 gas	17"	14,000	6,610	16,240	16,120
	Duramax 6.6L V8	17"	14,000	5,662	20,000	31,180
Long Bed High Country 4x4 DRW	6.6L V8 gas	17"	14,000	6,390	16,020	15,900
	Duramax 6.6L V8	17"	14,000	5,488	20,000	31,000

## Trailering Guide ➤

<sup>1</sup> Maximum Gross Vehicle Weight Rating (GVWR). When properly equipped; includes weight of vehicle, passengers, cargo and equipment. <sup>2</sup> These maximum payload ratings are intended for comparison purposes only. Before you buy a vehicle or use it to haul people or cargo, carefully review the Vehicle Loading section of the Owner's Manual and check the carrying capacity of your specific vehicle on the label on the inside of the driver door jamb. <sup>3</sup> Maximum trailering ratings are intended for comparison purposes only. Before you buy a vehicle or use it for trailering, carefully review the Trailering section of the Owner's Manual. The trailering capacity of your specific vehicle may vary. The weight of passengers, cargo and options or accessories may reduce the amount you can trailer. <sup>4</sup> Requires WT with available Max Trailering Package.

## STANDARD EQUIPMENT

Standard on every Silverado HD:

MECHANICAL
Air filter – heavy-duty with air filtration monitoring
Battery – heavy-duty
Brakes – 4-wheel antilock disc with Duralife® brake rotors and brake lining wear indicator
Cooling – external engine and transmission oil coolers
Differential – automatic locking rear
Engine – 6.6L V8 gas with Variable Valve Timing (VVT) and Direct Injection
Frame – fully boxed frame with hydroformed front section
StabiliTrak – Electronic Stability Control System and Traction Control; includes Electronic Trailer Sway Control and Hill Start Assist
Trailer Information Label – provides maximum trailer ratings for tongue weight and conventional, gooseneck and 5th-wheel trailering
Trailer Package – trailer hitch with 2.5-inch receiver and 2-inch insert, 7-pin wiring connector and Hitch Guidance <sup>1</sup>
Transmission – heavy-duty 6-speed automatic
EXTERIOR
BedSteps – integrated on forward portion of bed on driver and passenger side
Bumper – rear CornerSteps
Cargo area lighting – integrated with center high-mounted stop lamp
Daytime running lamps – automatic on/off with automatic delay
Fuel filler – capless fueling (gas engine only)
Pickup bed – Durabed
Tailgate and bed rail – protection cap
Tie-downs – 12 fixed cargo tie-downs, rated at 500 lbs <sup>2</sup> per corner
Tire – carrier lock
Tire – full-size spare

INTERIOR
Air conditioning
Air vents – rear, heating/cooling (Double Cab and Crew Cab)
Airbags <sup>3</sup> – dual-stage frontal airbags for driver and front outboard passenger; seat-mounted side-impact airbags for driver and front outboard passenger; head-curtain airbags for front and rear outboard seating positions; includes front outboard Passenger Sensing System for frontal outboard passenger airbag
Assist handles – driver and front passenger, A-pillar; rear passenger, B-pillar
Connectivity – Bluetooth® phone connectivity and wireless audio streaming <sup>4</sup>
Display – outside temperature
Door locks – manual (Regular Cab); power programmable with lockout protection and manual rear door child security (Double Cab and Crew Cab)
Instrument cluster – 6-gauge with speedometer, fuel level, engine temperature, tachometer, voltage and oil pressure
Media – two USB ports <sup>5</sup> on instrument panel
Power outlet – 12-volt auxiliary, front
Rear Seat Reminder <sup>6</sup> (Double Cab and Crew Cab)
Teen Driver technology <sup>1</sup>
Tire Pressure Monitoring System – with Tire Fill Alert (does not apply to spare tire)

<sup>1</sup> Safety or driver assistance features are no substitute for the driver's responsibility to operate the vehicle in a safe manner. Read the vehicle Owner's Manual for important feature limitations and information. <sup>2</sup> These maximum payload ratings are intended for comparison purposes only. Before you buy a vehicle or use it to haul people or cargo, carefully review the Vehicle Loading section of the Owner's Manual and check the carrying capacity of your specific vehicle on the label on the inside of the driver door jamb.

<sup>3</sup> A NOTE ON CHILD SAFETY: Always use seat belts and the correct child restraint for your child's age and size, even with airbags. Even in vehicles equipped with the Passenger Sensing System, children are safer when properly secured in a rear seat in the appropriate infant, child or booster seat. Never place a rear-facing infant restraint in the front seat of any vehicle equipped with an active frontal airbag. See your vehicle Owner's Manual and the child safety seat instructions for more safety information.

<sup>4</sup> Go to [my.chevrolet.com/learnAbout/bluetooth](http://my.chevrolet.com/learnAbout/bluetooth) to find out which phones are compatible with the vehicle. Full Bluetooth feature functionality varies by device, model and software version. <sup>5</sup> Not compatible with all devices. <sup>6</sup> Does not detect people or items. Always check rear seat before exiting.

## WORK TRUCK (WT) EXTERIOR COLORS



Summit White



Silver Ice Metallic



Red Hot



Greenstone Metallic



Northsky Blue Metallic



Black



## WORK TRUCK (WT) FEATURES



Available on 2500 HD and 3500 HD Regular Cab, Double Cab and Crew Cab.  
In addition to standard equipment, select WT features include:

### MECHANICAL

Transfer case – 2-speed electronic (4x4 models)

### EXTERIOR

Glass – solar-absorbing tinted

Headlamps – halogen reflector headlamps and daytime running lamps

Mirrors – vertical trairling, manual-adjustable, manual-folding and manual-extending with lower convex mirrors

Recovery hooks<sup>1</sup> – Black

Tailgate – manual lift

### INTERIOR

Air conditioning – single-zone

Audio – 2-speaker system (Regular Cab); 6-speaker system (Double Cab and Crew Cab)

Driver Information Center – 3.5-inch diagonal monochromatic display

Entertainment – Chevrolet Infotainment 3 system<sup>2</sup> with 7-inch diagonal color touch-screen

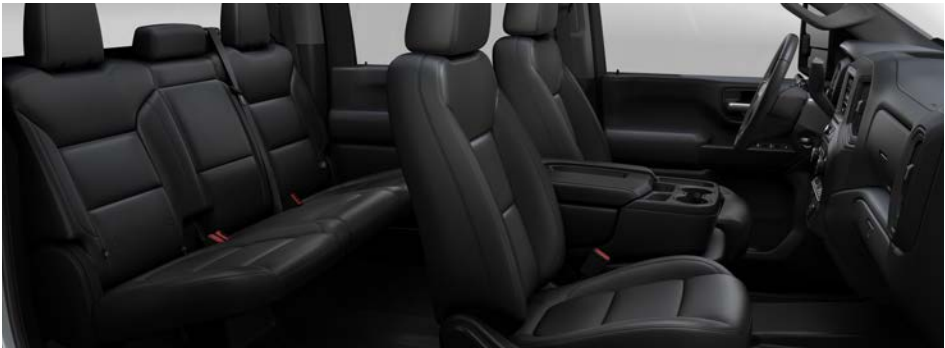
Floor covering – rubberized-vinyl

Rear Vision Camera<sup>3</sup>

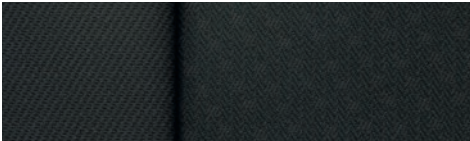
Seat – front 40/20/40 split-bench with covered armrest storage and 4-way manual driver and front passenger seat adjusters  
– rear 60/40 folding bench (Double Cab and Crew Cab)

Steering column – tilt-wheel manual steering column

Windows – manual (Regular Cab); power with driver express-up/-down, all others express-down (Double Cab and Crew Cab)



Jet Black Vinyl (shown)



Jet Black Cloth

<sup>1</sup> To avoid the risk of injury, never use recovery hooks to tow a vehicle. For more information, see the Recovery Hooks section of your Owner's Manual. <sup>2</sup> Chevrolet Infotainment System functionality varies by model. Full functionality requires compatible Bluetooth and smartphone, and USB connectivity for some devices. <sup>3</sup> Safety or driver assistance features are no substitute for the driver's responsibility to operate the vehicle in a safe manner. Read the vehicle Owner's Manual for important feature limitations and information.

## WORK TRUCK (WT) WHEELS



**17" Painted-Steel Wheels (PYN)**  
Standard on 2500 HD WT



**17" Painted-Steel Wheels (PYW)**  
Standard on 3500 HD WT DRW



**17" Painted-Steel Wheels with Chrome Trim and Caps (PYW with P06)**  
Available on 3500 HD WT DRW



**17" Forged Polished-Aluminum Wheels (RS7)**  
Available on 3500 HD WT DRW  
with Max Trailering Package



**17" Machined-Aluminum Wheels (PYQ)**  
Available on 2500 HD WT



**18" Painted-Steel Wheels (PYT)**  
Standard on 3500 HD WT SRW;  
available on 2500 HD WT



**18" Machined-Aluminum Wheels with Silver-Painted Accents (PYV)**  
Available on 3500 HD WT SRW



**18" High-Gloss Black Aluminum Wheels (PTW)**  
Included on 2500 HD WT and 3500 HD WT SRW  
with Alaskan Snow Plow Special Edition

## CUSTOM EXTERIOR COLORS



Summit White



Silver Ice Metallic



Red Hot



Greenstone Metallic



Northsky Blue Metallic



Mosaic Black Metallic



Black



## CUSTOM FEATURES & WHEELS



Available on 2500 HD Double Cab and Crew Cab. In addition to standard equipment, select Custom features include:

### MECHANICAL

Transfer case – 2-speed electronic (4x4 models)

### EXTERIOR

Glass – deep-tinted behind front doors

Mirrors – vertical trailing, heated upper glass, power-adjustable, manual-folding and manual-extending with lower convex mirrors and integrated turn signal indicators

Taillamps – LED

### INTERIOR

Air conditioning – single-zone

Audio – 6-speaker system

Cruise control – electronic with Set and Resume Speed, steering wheel-mounted controls

Driver Information Center – 3.5-inch diagonal monochromatic display

Entertainment – Chevrolet Infotainment 3 system<sup>1</sup> with 7-inch diagonal color touch-screen

Floor covering – color-keyed carpeting

Floor mats – vinyl, front and rear

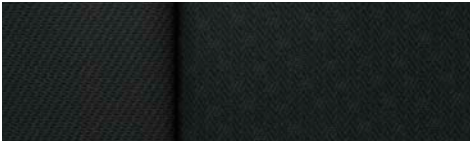
Rear Vision Camera<sup>2</sup>

Remote Keyless Entry

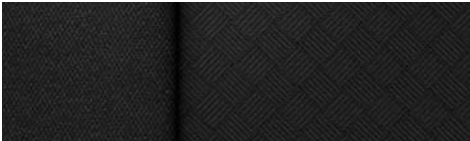
Seat – front 40/20/40 split-bench with covered armrest storage and 4-way manual driver and front passenger seat adjusters  
– rear 60/40 folding bench

Steering column – tilt-wheel manual steering column

Windows – power with driver express-up/-down, all others express-down



Jet Black Cloth (shown)



Jet Black Cloth<sup>3</sup>



20" 10-Spoke Machined-Aluminum Wheels  
with Grazen Metallic-Painted Accents (Q86)  
Standard on 2500 HD Custom

<sup>1</sup> Chevrolet Infotainment System functionality varies by model. Full functionality requires compatible Bluetooth and smartphone, and USB connectivity for some devices. <sup>2</sup> Safety or driver assistance features are no substitute for the driver's responsibility to operate the vehicle in a safe manner. Read the vehicle Owner's Manual for important feature limitations and information. <sup>3</sup> Requires available Custom Convenience Package, 10-way power driver seat adjuster and 120-volt power outlet.

## LT EXTERIOR COLORS



Summit White



Iridescent Pearl Tricoat<sup>1</sup>



Silver Ice Metallic



Red Hot



Cherry Red Tintcoat<sup>1</sup>



Greenstone Metallic



Northsky Blue Metallic



Mosaic Black Metallic



Black

<sup>1</sup>Extra-cost color.

## LT FEATURES



Available on 2500 HD and 3500 HD Regular Cab, Double Cab and Crew Cab.  
In addition to standard equipment, select LT features include:

### MECHANICAL

Trailer brake controller – integrated

Transfer case – 2-speed electronic (4x4 models)

### EXTERIOR

Glass – deep-tinted behind front doors

Mirrors – vertical trairling, heated upper glass, power-adjustable, manual-folding and manual-extending with lower convex mirrors and integrated turn signal indicators

Tailgate – EZ Lift, includes power lock and release

### INTERIOR

Air conditioning – single-zone

Cruise control – electronic with Set and Resume Speed

Driver Information Center – 4.2-inch diagonal color display and driver personalization

Entertainment – Chevrolet Infotainment 3 system<sup>1</sup> with 8-inch diagonal color touch-screen

Floor covering – color-keyed carpeting

Floor mats – vinyl, front and rear

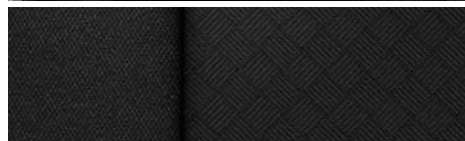
Rear Vision Camera<sup>2</sup>

Remote Keyless Entry

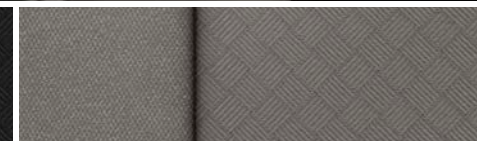
SiriusXM<sup>®3</sup> – 3-month trial subscription

Steering wheel – mounted audio, cruise and phone controls

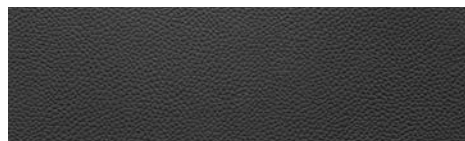
Windows – power with driver express-up/-down, passenger express-down



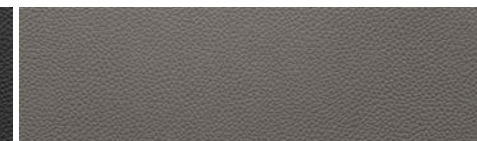
Jet Black Cloth



Gideon Cloth



Jet Black Leather-Appointed Front Seating



Gideon Leather-Appointed Front Seating (shown)

<sup>1</sup> Chevrolet Infotainment System functionality varies by model. Full functionality requires compatible Bluetooth and smartphone, and USB connectivity for some devices. <sup>2</sup> Safety or driver assistance features are no substitute for the driver's responsibility to operate the vehicle in a safe manner. Read the vehicle Owner's Manual for important feature limitations and information. <sup>3</sup> If you decide to continue service after your trial, your selected subscription plan will automatically renew thereafter. You will be charged at then-current rates. Fees and taxes apply. To cancel you must call SiriusXM at 1-866-635-2349. See SiriusXM Customer Agreement for complete terms at [siriusxm.com](http://siriusxm.com). All fees and programming subject to change.

Some features shown may have limited, late or no availability. See dealer for feature availability.



## LT WHEELS



**17" Machined-Aluminum Wheels (PYQ)**  
Standard on 2500 HD LT



**17" Painted-Steel Wheels with Chrome Trim and Caps (PYW with P06)**  
Standard on 3500 HD LT DRW



**18" Painted-Steel Wheels (PYT)**  
Available on 2500 HD LT and 3500 HD LT SRW



**18" Machined-Aluminum Wheels with Silver-Painted Accents (PYV)**  
Standard on 3500 HD LT SRW; available on 2500 HD LT



**18" High-Gloss Black Aluminum Wheels (PTW)**  
Included on 2500 HD LT and 3500 HD LT SRW with Alaskan Snow Plow Special Edition, Midnight Edition or Z71 Sport Edition



**20" 10-Spoke Machined-Aluminum Wheels with Grazen Metallic-Painted Accents (Q86)**  
Available on 2500 HD LT and 3500 HD LT SRW; included on 2500 HD LT and 3500 HD LT SRW with Z71 Chrome Sport Edition



**20" High-Gloss Black Aluminum Wheels with Black Center Caps (NZD)**  
Available on 2500 HD LT and 3500 HD LT SRW with Midnight Edition or Z71 Sport Edition

## LTZ EXTERIOR COLORS



Summit White



Iridescent Pearl Tricoat<sup>1</sup>



Silver Ice Metallic



Red Hot



Cherry Red Tintcoat<sup>1</sup>



Greenstone Metallic



Northsky Blue Metallic



Mosaic Black Metallic



Black

<sup>1</sup>Extra-cost color.

## LTZ FEATURES



Available on 2500 HD and 3500 HD Double Cab and Crew Cab. In addition to standard equipment, select LTZ features include:

### MECHANICAL

**Advanced Trailering System** – includes trailering checklist, trailer maintenance reminders, trailer security alerts, trailer mileage, Tow/Haul mode reminder and trailer electrical diagnostics

**Hitch Guidance with Hitch View<sup>1</sup>**

**Transfer case** – Autotrac<sup>®</sup> 2-speed active electronic (4x4 models)

### EXTERIOR

**Fog lamps** – LED

**Headlamps** – high-intensity LED reflector headlamps with LED signature curtain daytime running lamps

**Mirrors** – vertical trailering, heated and auto-dimming upper glass (driver and passenger), power-adjustable, power-folding and power-extending with lower convex mirrors, integrated turn signal indicators, puddle lamps, perimeter lighting and auxiliary lighting with chrome mirror caps

**Power outlet** – 120-volt (up to 400 watts, shared with instrument panel 120-volt outlet), bed-mounted

**Tailgate** – EZ Lift, includes power lock and release

### INTERIOR

**Air conditioning** – automatic, dual-zone with individual climate settings for driver and front passenger

**Entertainment** – Chevrolet Infotainment 3 Plus system<sup>2</sup> with 8-inch diagonal HD color touch-screen

**Keyless Open and Start**

**Remote vehicle starter system**

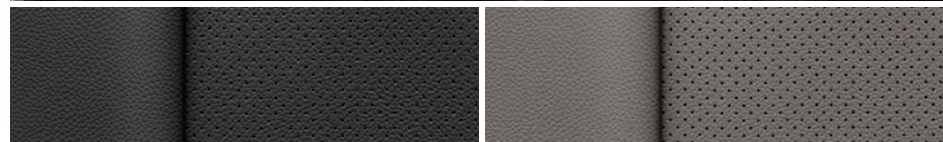
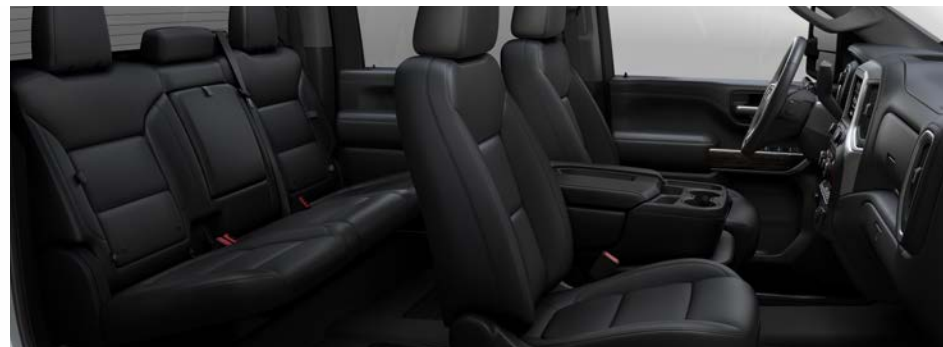
**Seat** – rear 60/40 folding bench with underseat storage and center foldout armrest with two cup holders (seatback storage included on Crew Cab)

**Seats** – 10-way power driver and front outboard passenger seat adjusters with power lumbar control

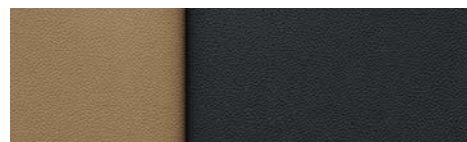
**SiriusXM<sup>®</sup> with 360L<sup>3</sup>** – 3-month trial subscription

**Steering column** – manual tilt/telescoping

**Steering wheel** – leather-wrapped



Jet Black Perforated Leather-Appointed Front Seating (shown) Gideon Perforated Leather-Appointed Front Seating



Carhartt<sup>®</sup> Brown Perforated Leather Seating Surfaces<sup>4</sup>

<sup>1</sup> Safety or driver assistance features are no substitute for the driver's responsibility to operate the vehicle in a safe manner. Read the vehicle Owner's Manual for important feature limitations and information. <sup>2</sup> Chevrolet Infotainment System functionality varies by model. Full functionality requires compatible Bluetooth and smartphone, and USB connectivity for some devices. <sup>3</sup> If you decide to continue service after your trial, your selected subscription plan will automatically renew thereafter. You will be charged at then-current rates. Fees and taxes apply. To cancel you must call SiriusXM at 1-866-635-2349. See SiriusXM Customer Agreement for complete terms at [siriusxm.com](http://siriusxm.com). All fees and programming subject to change. <sup>4</sup> Available only on 2500 HD Crew Cab 4x4. Requires available Carhartt Edition.

Some features shown may have limited, late or no availability. See dealer for feature availability.

## LTZ WHEELS



17" Painted-Steel Wheels  
with Chrome Trim and Caps (PYW with P06)  
Standard on 3500 HD LTZ DRW



17" Forged Polished-Aluminum Wheels (RS7)  
Available on 3500 HD LTZ DRW



18" Machined-Aluminum Wheels  
with Silver-Painted Accents (PYV)  
Standard on 2500 HD LTZ and 3500 HD LTZ SRW



18" High-Gloss Black Aluminum Wheels (PTW)  
Included on 2500 HD LTZ and 3500 HD LTZ SRW  
with Midnight Edition or Z71 Sport Edition



20" 10-Spoke Machined-Aluminum Wheels  
with Grazen Metallic-Painted Accents (Q86)  
Included on 2500 HD LTZ with Carhartt® Edition



20" High-Gloss Black Aluminum Wheels  
with Black Center Caps (NZD)  
Available on 2500 HD LTZ and 3500 HD LTZ SRW  
with Midnight Edition or Z71 Sport Edition



20" 6-Spoke Polished-Aluminum Wheels (RTH)  
Available on 2500 HD LTZ and 3500 HD LTZ SRW;  
included on 2500 HD LTZ and 3500 HD LTZ SRW with  
Z71 Chrome Sport Edition



## HIGH COUNTRY EXTERIOR COLORS



Summit White



Iridescent Pearl Tricoat<sup>1</sup>



Silver Ice Metallic



Cherry Red Tintcoat<sup>1</sup>



Greenstone Metallic



Northsky Blue Metallic



Mosaic Black Metallic



Black

<sup>1</sup>Extra-cost color.

## HIGH COUNTRY FEATURES & WHEELS



Available on 2500 HD and 3500 HD Crew Cab 4x4. In addition to standard equipment, select High Country features include:

### MECHANICAL

**Advanced Trailering System** – includes trailering checklist, trailer maintenance reminders, trailer security alerts, trailer mileage, Tow/Haul mode reminder and trailer electrical diagnostics

**Hitch Guidance with Hitch View<sup>1</sup>**

**Transfer case** – Autotrac 2-speed active electronic

### EXTERIOR

**Assist steps** – chrome, 6-inch rectangular

**Bedliner** – Black Chevytec spray-on bedliner with High Country logo

**Tailgate** – power-up/-down with power lock and release

### INTERIOR

**Air conditioning** – automatic, dual-zone with individual climate settings for driver and front passenger

**Audio system** – Bose premium 7-speaker sound system with Richbass subwoofer

**Bed View Camera<sup>1</sup>**

**Driver Information Center** – enhanced 8-inch diagonal multi-color configurable display

**Entertainment** – Chevrolet Infotainment 3 Premium system<sup>2</sup> with Navigation<sup>3</sup> and 8-inch diagonal HD color touch-screen

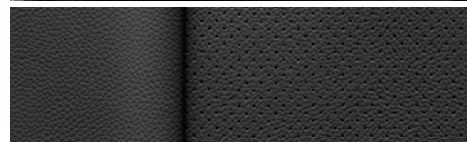
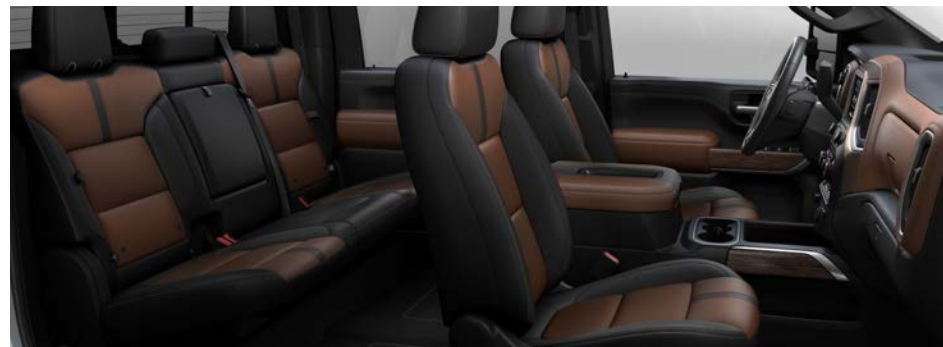
**HD Surround Vision<sup>1</sup>** – with two trailer camera provisions

**Lane Change Alert with Side Blind Zone Alert<sup>1</sup>**

**Rear Cross Traffic Alert<sup>1</sup>**

**Seats** – front bucket seats with center floor console  
– heated and ventilated driver and front passenger

**SiriusXM<sup>®</sup> with 360L<sup>4</sup>** – 3-month trial subscription



Jet Black Perforated Leather Seating Surfaces



Jet Black/Umbra Perforated Leather Seating Surfaces (shown)



17" Forged Polished-Aluminum Wheels (RS7)  
Available on 3500 HD High Country DRW



20" 16-Spoke Polished-Aluminum Wheels (PYS)  
Standard on 2500 HD High Country  
and 3500 HD High Country SRW

<sup>1</sup> Safety or driver assistance features are no substitute for the driver's responsibility to operate the vehicle in a safe manner. Read the vehicle Owner's Manual for important feature limitations and information. <sup>2</sup> Chevrolet Infotainment System functionality varies by model. Full functionality requires compatible Bluetooth and smartphone, and USB connectivity for some devices. <sup>3</sup> Map coverage available in the United States, Puerto Rico and Canada. <sup>4</sup> If you decide to continue service after your trial, your selected subscription plan will automatically renew thereafter. You will be charged at then-current rates. Fees and taxes apply. To cancel you must call SiriusXM at 1-866-635-2349. See SiriusXM Customer Agreement for complete terms at [siriusxm.com](http://siriusxm.com). All fees and programming subject to change.

Some features shown may have limited, late or no availability. See dealer for feature availability.

## SPECIFICATIONS

● STANDARD ○ AVAILABLE – NOT AVAILABLE

	WT	CUSTOM	LT	LTZ	HIGH COUNTRY
<b>SAFETY AND DRIVER ASSISTANCE</b>					
Airbags <sup>1</sup> – dual-stage frontal airbags for driver and front outboard passenger; seat-mounted side-impact airbags for driver and front outboard passenger; head-curtain airbags for front and rear outboard seating positions; includes front outboard Passenger Sensing System for frontal outboard passenger airbag	●	●	●	●	●
Automatic Emergency Braking <sup>2</sup> (WT and Custom require available Safety Confidence Package; LTZ and High Country require available Safety Package II)	○	○	–	○	○
Following Distance Indicator <sup>2</sup> (requires available Safety Package II)	–	–	–	○	○
Forward Collision Alert <sup>2</sup> (WT and Custom require available Safety Confidence Package; LTZ and High Country require available Safety Package II)	●	○	–	○	○
Front and Rear Park Assist <sup>2</sup> – ultrasonic (WT requires available WT Safety Package; LT and LTZ require available Safety Package; models built on or after December 20, 2021, Front and Rear Park Assist feature will not function without dealer retrofit, expected Q4 2022; see dealer for details)	○	–	○	○	○
Lane Change Alert with Side Blind Zone Alert <sup>2</sup> (WT requires available WT Safety Package; LT and LTZ require available Safety Package)	○	–	○	○	●
Lane Departure Warning <sup>2</sup> (requires available Safety Package II)	–	–	–	○	○
Rear Cross Traffic Alert <sup>2</sup> (WT requires available WT Safety Package; LT and LTZ require available Safety Package)	○	–	○	○	●
Rear Vision Camera <sup>2</sup>	●	●	●	–	–
HD Rear Vision Camera <sup>2</sup> (LT requires available Convenience Package II or Advanced Trailing Package)	–	–	○	●	●
HD Surround Vision <sup>2</sup> – with two trailer camera provisions, includes HD Rear Vision Camera (LTZ requires available LTZ Convenience Package II)	–	–	–	○	●
Safety Alert Seat <sup>2</sup> (LTZ requires available Safety Package II or Carhartt® Edition; High Country requires available Safety Package II)	–	–	–	○	○
Teen Driver technology <sup>2</sup>	●	●	●	●	●
Theft-deterrent system – unauthorized entry (LT requires available Convenience Package)	–	–	○	●	●
Tire Pressure Monitoring System – with Tire Fill Alert (does not monitor spare tire)	●	●	●	●	●
Up to 3 months of OnStar® Safety & Security coverage <sup>3</sup> (WT requires available SiriusXM® <sup>4</sup> ; Custom requires available Infotainment Package)	○	○	●	●	●

### Return To Models

**1 A NOTE ON CHILD SAFETY:** Always use seat belts and the correct child restraint for your child's age and size, even with airbags. Even in vehicles equipped with the Passenger Sensing System, children are safer when properly secured in a rear seat in the appropriate infant, child or booster seat. Never place a rear-facing infant restraint in the front seat of any vehicle equipped with an active frontal airbag. See your vehicle Owner's Manual and the child safety seat instructions for more safety information.

**2** Safety or driver assistance features are no substitute for the driver's responsibility to operate the vehicle in a safe manner. Read the vehicle Owner's Manual for important feature limitations and information. **3** When you select a monthly plan within 30 days of activating your 1-month trial, you'll receive the next 2 months of the plan you select at no additional charge when you associate an approved payment method on file to your account and authorize recurring payments for your service plan. The amount and frequency of each recurring payment is based upon the service(s) and payment interval(s) you select from the options provided. After the trial expires, OnStar will automatically bill your payment method monthly at then-current standard monthly rates. Plans containing 4G LTE data will be billed every 30 days by AT&T. You may cancel at any time by pushing your blue OnStar button or calling 1-888-466-7827. May not be combined with other offers or retroactively applied. Offer subject to change. **4** If you decide to continue service after your trial, your selected subscription plan will automatically renew thereafter. You will be charged at then-current rates. Fees and taxes apply. To cancel you must call SiriusXM at 1-866-635-2349. See SiriusXM Customer Agreement for complete terms at siriusxm.com. All fees and programming subject to change.

	WT	CUSTOM	LT	LTZ	HIGH COUNTRY
<b>MECHANICAL</b>					
Advanced Trailing System – includes trailering checklist, trailer maintenance reminders, trailer security alerts, trailer mileage, Tow/Haul mode reminder and trailer electrical diagnostics (LT requires available Convenience Package II or Advanced Trailing Package)	–	–	○	●	●
Air filter – heavy-duty with air filtration monitoring	●	●	●	●	●
Alternator – 170 amps, included with 6.6L V8 gas engine	●	●	●	●	●
– 220 amps, included with available Duramax 6.6L Turbo-Diesel V8 engine; available with 6.6L V8 gas engine	○	○	○	○	○
– dual, 220-amp primary and 170-amp auxiliary (requires available auxiliary battery with 6.6L V8 gas engine)	○	○	○	○	○
Battery – heavy-duty (requires 6.6L V8 gas engine)	●	●	●	●	●
– dual, heavy-duty (requires available Duramax 6.6L Turbo-Diesel V8 engine)	○	○	○	○	○
– auxiliary (requires 6.6L V8 gas engine with available 220-amp alternator or dual alternators)	○	○	○	○	○
Brakes – 4-wheel antilock disc with Duralife brake rotors and brake lining wear indicator	●	●	●	●	●
Cooling – external engine and transmission oil coolers	●	●	●	●	●
Differential – automatic locking rear	●	●	●	●	●
Engine – 6.6L V8 gas with Variable Valve Timing (VVT) and Direct Injection; 401 hp @ 5200 rpm, 464 lb.-ft. of torque @ 4000 rpm	●	●	●	●	●
– Duramax 6.6L Turbo-Diesel V8 (B20 biodiesel-compatible); 445 hp @ 2800 rpm, 910 lb.-ft. of torque @ 1600 rpm; includes exhaust brake, engine block heater and capped fuel filler (WT requires available integrated trailer brake controller; Regular Cab WT requires available WT Convenience Package; Custom requires available Custom Value Package)	○	○	○	○	○
Exhaust – polished tip (6.6L V8 gas engine)	–	–	–	–	●
Frame – fully boxed frame with hydroformed front section	●	●	●	●	●
High idle switch (not available with Power Take-Off; WT requires available cruise control)	○	○	○	○	○
Hitch Guidance <sup>2</sup>	●	●	●	●	●
Hitch Guidance with Hitch View <sup>2</sup> (LT requires available Convenience Package II or Advanced Trailing Package)	–	–	○	●	●

## SPECIFICATIONS (CONTINUED)

● STANDARD ○ AVAILABLE – NOT AVAILABLE

	WT	CUSTOM	LT	LTZ	HIGH COUNTRY
<b>MECHANICAL (CONTINUED)</b>					
<b>Power Take-Off</b> (WT requires available cruise control and Duramax 6.6L Turbo-Diesel V8 engine; Custom and LT require available Duramax 6.6L Turbo-Diesel V8 engine)	○	○	○	–	–
<b>Skid plates</b> – oil pan, front axle and transfer case (2500 HD and 3500 HD High Country SRW require available Z71 Off-Road Package or Snow Plow Prep/Camper Package)	○	○	○	○	○
<b>StabiliTrak</b> – Electronic Stability Control System and Traction Control; includes Electronic Trailer Sway Control and Hill Start Assist	●	●	●	●	●
<b>Steering</b> – recirculating ball with smart flow power steering system – Digital Variable Steering Assist	● –	● –	● –	– ●	– ●
<b>Trailer brake controller</b> – integrated (Regular Cab WT requires available WT Convenience Package; Custom requires available Custom Convenience Package, Custom Value Package or Gooseneck/5th Wheel Package)	○	○	●	●	●
<b>Trailer Tire Pressure Monitor Sensors</b> – set of four (LT requires available Convenience Package II or Advanced Trailering Package)	–	–	○	○	○
<b>Trailer wiring provisions</b> – for trailering with gooseneck or 5th-wheel trailer, includes additional 7-way wiring harness at the rear of the pickup bed	○	○	○	○	○
<b>Trailering Information Label</b> – provides maximum trailer ratings for tongue weight and conventional, gooseneck and 5th-wheel trailering	●	●	●	●	●
<b>Trailering Package</b> – trailer hitch with 2.5-inch receiver and 2-inch insert, 7-pin wiring connector and Hitch Guidance <sup>1</sup>	●	●	●	●	●
<b>Transfer case</b> – 2-speed, electronic with push-button controls (4x4 models) – 2-speed, electronic active Autotrac with push-button controls (4x4 models)	● –	● –	● ○	– ●	– ●
<b>Transmission</b> – heavy-duty 6-speed automatic – Allison® 10-speed automatic (requires available Duramax 6.6L Turbo-Diesel V8 engine)	● ○	● ○	● ○	● ○	● ○
<b>Winter grille cover</b> (requires available Duramax 6.6L Turbo-Diesel V8 engine)	○	○	○	○	○

	WT	CUSTOM	LT	LTZ	HIGH COUNTRY
<b>EXTERIOR</b>					
<b>Assist steps</b> – chrome, 6-inch rectangular (Crew Cab) – Black, power-retractable with foot-activated rearward articulation to provide bed access (requires available Z71 Sport Edition, Midnight Edition or Carhartt® Edition) – bright trim, power-retractable with foot-activated rearward articulation to provide bed access (LTZ requires available Z71 Chrome Sport Edition)	– – –	– – –	○ – –	○ ○ ○	● – ○
<b>Bedliner</b> – Chevytec spray-on with logo (bed only; tailgate has composite inner panel)	○	○	○	○	●
<b>BedSteps</b> – integrated on forward portion of bed on driver and passenger side	●	●	●	●	●
<b>Bumper</b> – rear CornerSteps	●	●	●	●	●
<b>Bumpers</b> – Black, front and rear – high-gloss Black, front and rear (LT and LTZ require available Midnight Edition) – chrome, front and rear – body-color, front and rear (LT requires available Z71 Chrome Sport Edition or Z71 Sport Edition; LTZ requires available Carhartt Edition, Z71 Chrome Sport Edition or Z71 Sport Edition)	● – ○ –	– ● – –	– ○ ● ○	– ○ ● ○	– – – ●
<b>Cargo area lighting</b> – integrated with center high-mounted stop lamp – LED pickup bed, activated with switch in bed, instrument panel center switch bank or key fob	● ○	● ○	● ○	● ○	● ●
<b>Daytime running lamps</b> – automatic on/off with automatic delay	●	●	●	●	●
<b>Door handles</b> – Black, grained – high-gloss Black (requires available Midnight Edition or Z71 Sport Edition) – body-color (LTZ requires available Carhartt Edition) – chrome (LT requires available Z71 Chrome Sport Edition)	● – – –	● – – –	– – ● ○	– ○ ○ ●	– – – ●
<b>Fog lamps</b> – LED (LT requires available Convenience Package)	–	–	○	●	●
<b>Fuel filler</b> – capless fueling (6.6L V8 gas engine)	●	●	●	●	●
<b>Glass</b> – solar-absorbing tinted – deep-tinted behind front doors (Double Cab and Crew Cab)	● ○	– ●	– ●	– ●	– ●

[Return To Models](#)

<sup>1</sup> Safety or driver assistance features are no substitute for the driver's responsibility to operate the vehicle in a safe manner. Read the vehicle Owner's Manual for important feature limitations and information.



## SPECIFICATIONS (CONTINUED)

● STANDARD ○ AVAILABLE – NOT AVAILABLE

	WT	CUSTOM	LT	LTZ	HIGH COUNTRY
<b>EXTERIOR (CONTINUED)</b>					
Grille – Chevrolet lettered grille, Black front grille bar and Black mesh grille inserts with small Gold bowtie emblem	●	–	–	–	–
– Chevrolet lettered grille, body-color front grille bar, body-color grille surround and Black mesh grille inserts with small Gold bowtie emblem	–	●	–	–	–
– Chevrolet lettered grille, chrome front grille bar and Black mesh grille inserts with small Gold bowtie emblem	–	–	●	–	–
– Chevrolet lettered grille, chrome front grille bar and chrome grille inserts with small Gold bowtie emblem	–	–	–	●	–
– chrome front grille bar with Gold bowtie emblem and chrome grille inserts with Bronze accents	–	–	–	–	●
Headlamps – halogen reflector	●	●	●	–	–
– high-intensity LED reflector with LED signature curtain daytime running lamps (LT requires available Midnight Edition, Z71 Chrome Sport Edition or Z71 Sport Edition)	–	–	○	●	●
IntelliBeam® – automatic high beam on/off (requires available Safety Package II)	–	–	–	○	○
Mirror caps – Black	●	●	●	–	–
– high-gloss Black (requires available Midnight Edition or Z71 Sport Edition)	–	–	○	○	–
– chrome (LT requires available Z71 Chrome Sport Edition)	–	–	○	●	●
– body-color (requires available Carhartt® Edition)	–	–	–	○	–
Mirrors – vertical trairling, manual-adjustable, manual-folding and manual-extending with lower convex mirrors	●	–	–	–	–
– vertical trairling, heated upper glass, power-adjustable, manual-folding and manual-extending with lower convex mirrors and integrated turn signal indicators (WT requires available WT Convenience Package)	○	●	●	–	–
– vertical trairling, heated upper glass, auto-dimming driver side, power-adjustable, power-folding and manual-extending with lower convex mirrors and integrated turn signal indicators, puddle lamps, perimeter lighting and auxiliary lighting; includes interior auto-dimming rearview mirror (WT requires available WT Convenience Package; Custom requires available Custom Convenience Package; LT requires available Convenience Package or Advanced Trairling Package)	○	○	○	–	–
– vertical trairling, heated and auto-dimming upper glass (driver and passenger), power-adjustable, power-folding and power-extending with lower convex mirrors, integrated turn signal indicators, puddle lamps, perimeter lighting and auxiliary lighting	–	–	–	●	●
– heated, power-adjustable, manual-folding, non-extending; passenger mirror has flat glass (WT requires available WT Convenience Package; 3500 HD LT requires SRW)	○	–	○	–	–
Moldings – Black window beltline (LTZ requires available Midnight Edition, Z71 Sport Edition or Carhartt Edition)	●	●	●	○	–
– stainless steel window beltline (LT requires available Z71 Chrome Sport Edition)	–	–	○	●	●

	WT	CUSTOM	LT	LTZ	HIGH COUNTRY
<b>EXTERIOR (CONTINUED)</b>					
Pickup bed – Durabed	●	●	●	●	●
Power outlets – 120-volt (400 watts shared), bed-mounted and instrument panel-mounted (WT requires available WT Convenience Package; Custom requires available Custom Convenience Package; LT requires available Convenience Package II)	○	○	○	●	●
Recovery hooks¹ – Black	●	●	●	●	–
– chrome (LT requires available Duramax and Appearance Package)	–	–	○	–	●
Roof marker lamps – LED amber (standard on 3500 HD DRW models)²	○	○	○	○	○
Tailgate – manual lift	●	●	–	–	–
– EZ Lift, power lock and release (WT requires available WT Convenience Package; Custom requires available Custom Convenience Package; High Country requires available Multi-Flex Tailgate)	○	○	●	●	○
– power-up/-down with power lock and release (LT requires available Convenience Package II; LTZ requires available LTZ Convenience Package)	–	–	○	○	●
– Multi-Flex, with six functional load/access features (WT requires available WT Convenience Package; Custom requires available Custom Convenience Package; LT requires available Convenience Package II; LTZ requires available LTZ Convenience Package and EZ Lift power lock and release tailgate; High Country requires available EZ Lift power lock and release tailgate)	○	○	○	○	○
Tailgate and bed rail – protection cap	●	●	●	●	●
Taillamps – incandescent	●	–	●	–	–
– LED	–	●	–	●	●
Tie-downs – 12 fixed cargo tie-downs, rated at 500 lbs³ per corner	●	●	●	●	●
Tire – carrier lock	●	●	●	●	●
– full-size spare	●	●	●	●	●
Tires – LT245/75R17E all-season (2500 HD)	●	–	●	–	–
– LT265/70R17E all-terrain (2500 HD)	○	–	○	–	–
– LT275/70R18E all-terrain (2500 HD)	○	–	○	●	–
– LT275/70R18 mud-terrain (2500 HD 4x4 models) (WT requires available Alaskan Snow Plow Special Edition; LT requires available Alaskan Snow Plow Special Edition, Midnight Edition or Z71 Sport Edition; LTZ requires available Midnight Edition or Z71 Sport Edition)	○	–	○	○	–
– LT275/65R20 all-terrain (2500 HD and 3500 HD SRW; LT and LTZ require available 20" wheels)	–	●	○	○	●
– LT235/80R17E all-season highway (3500 HD DRW)	●	●	●	●	●
– LT235/80R17E all-terrain (3500 HD DRW)	○	○	○	○	○
– LT275/70R18E all-terrain (3500 HD SRW)	●	–	●	●	–
Wheelhouse liners – rear (LT requires available Convenience Package) (SRW models only)	–	–	○	●	●

¹ To avoid the risk of injury, never use recovery hooks to tow a vehicle. For more information, see the Recovery Hooks section of your Owner's Manual. ² Restriction applies in California on 2500 HD and 3500 HD SRW models. See dealer for more information.

³ These maximum payload ratings are intended for comparison purposes only. Before you buy a vehicle or use it to haul people or cargo, carefully review the Vehicle Loading section of the Owner's Manual and check the carrying capacity of your specific vehicle on the label on the inside of the driver door jamb.

## SPECIFICATIONS (CONTINUED)

● STANDARD ○ AVAILABLE – NOT AVAILABLE

	WT	CUSTOM	LT	LTZ	HIGH COUNTRY
<b>INTERIOR</b>					
Air conditioning – single-zone	●	●	●	–	–
– automatic, dual-zone (LT requires available Convenience Package)	–	–	○	●	●
Air vents – rear, heating/cooling (Double Cab and Crew Cab)	●	●	●	●	●
Assist handles – driver and front passenger, A-pillar; rear passenger, B-pillar	●	●	●	●	●
Bed View Camera <sup>1</sup> – integrated with center high-mounted stop lamp; display located in auto-dimming rearview mirror (WT and Custom not available with Rear Camera Mirror; <sup>1</sup> LT not available with Advanced Trailing Package, Bed View Camera <sup>1</sup> with two trailer camera provisions, Convenience Package II or Rear Camera Mirror; <sup>1</sup> LT requires standard Chevrolet Infotainment System <sup>2</sup> ) (Double Cab and Crew Cab)	○	○	○	–	–
– Bed View Camera; includes two trailer camera provisions; display located in Chevrolet Infotainment System <sup>2</sup> screen (LT requires available Convenience Package II or Advanced Trailing Package; LTZ requires available LTZ Convenience Package II or Gooseneck/5th Wheel Package) (Double Cab and Crew Cab)	–	–	○	○	●
Center console – floor-mounted, with cup holders, cell phone storage, power cord management and hanging file holder capability (LT requires available front bucket seats; LTZ requires available LTZ Convenience Package)	–	–	○	○	●
Compass – display in instrument cluster (WT and Custom require available OnStar <sup>®3</sup> )	○	○	●	●	●
Cruise control – electronic with Set and Resume Speed, steering wheel-mounted	○	●	●	●	●
Defogger – rear-window (Custom requires available Custom Convenience Package)	○	○	○	●	●
Door locks – manual (Regular Cab)	●	–	–	–	–
– power programmable with lockout protection and manual rear door child security (standard on Double Cab and Crew Cab WT; Regular Cab WT requires available WT Convenience Package)	○	●	●	●	●
Driver Information Center – 3.5-inch diagonal monochromatic display	●	●	–	–	–
– 4.2-inch diagonal color display and driver personalization (WT and Custom require available Safety Confidence Package)	○	○	●	●	–
– enhanced 8-inch diagonal multi-color configurable display, includes analog speedometer and tachometer (LTZ requires available Technology Package)	–	–	–	○	●

	WT	CUSTOM	LT	LTZ	HIGH COUNTRY
<b>INTERIOR (CONTINUED)</b>					
Floor covering – rubberized-vinyl	●	–	○	–	–
– color-keyed carpeting	○	●	●	●	●
Floor liners – front and rear, with removable carpet inserts (not available on Regular Cab; requires available Chevytec spray-on bedliner with logo on LT and LTZ)	–	–	○	○	○
Floor mats – front and rear, vinyl (WT requires available color-keyed carpeting)	○	●	●	●	–
– front and rear, carpeted	–	–	–	–	●
Instrument cluster – 6-gauge with speedometer, fuel level, engine temperature, tachometer, voltage and oil pressure	●	●	●	●	●
Keyless Open and Start (LT requires available Convenience Package)	–	–	○	●	●
Memory settings – recalls two presets for power driver seat and exterior mirrors	–	–	–	●	●
Mirror – rearview, manual day/night	●	●	●	–	–
– rearview, auto-dimming (WT, Custom and LT require available outside power-adjustable, power-folding and manual-extending vertical trailing mirrors)	○	○	○	●	●
– rearview, auto-dimming with partial video display of cargo bed (requires available Bed View Camera <sup>4</sup> ) (Double Cab and Crew Cab)	○	○	○	–	–
– Rear Camera Mirror <sup>1</sup> (WT requires available WT Convenience Package; Custom requires available Custom Convenience Package; LT requires available Convenience Package or Advanced Trailing Package; LTZ and High Country require available Technology Package)	○	○	○	○	○
Power outlets – front auxiliary, 12-volt	●	●	●	●	●
– rear auxiliary, 12-volt (LT requires available Convenience Package)	–	–	○	●	●
– 120-volt (400 watts shared), instrument panel- and bed-mounted (WT requires available WT Convenience Package; Custom requires available Custom Convenience Package; LT requires available Convenience Package II)	○	○	○	●	●
Rear Seat Reminder <sup>4</sup> (Double Cab and Crew Cab)	●	●	●	●	●
Remote Keyless Entry (WT requires available WT Convenience Package)	○	●	●	–	–

<sup>1</sup> Safety or driver assistance features are no substitute for the driver's responsibility to operate the vehicle in a safe manner. Read the vehicle Owner's Manual for important feature limitations and information. <sup>2</sup> Chevrolet Infotainment System functionality varies by model. Full functionality requires compatible Bluetooth and smartphone, and USB connectivity for some devices. <sup>3</sup> When you select a monthly plan within 30 days of activating your 1-month trial, you'll receive the next 2 months of the plan you select at no additional charge when you associate an approved payment method on file to your account and authorize recurring payments for your service plan. The amount and frequency of each recurring payment is based upon the service(s) and payment interval(s) you select from the options provided. After the trial expires, OnStar will automatically bill your payment method monthly at then-current standard monthly rates. Plans containing 4G LTE data will be billed every 30 days by AT&T. You may cancel at any time by pushing your blue OnStar button or calling 1-888-466-7827. May not be combined with other offers or retroactively applied. Offer subject to change. <sup>4</sup> Does not detect people or items. Always check rear seat before exiting.

## SPECIFICATIONS (CONTINUED)

● STANDARD ○ AVAILABLE – NOT AVAILABLE

	WT	CUSTOM	LT	LTZ	HIGH COUNTRY
<b>INTERIOR (CONTINUED)</b>					
Remote vehicle starter system (Custom requires available Custom Convenience Package; LT requires available Convenience Package or Remote Start Package)	–	○	○	●	●
Steering column – manual tilt-wheel	●	●	●	–	–
– manual tilt/telescoping (LT requires available Convenience Package)	–	–	○	●	●
Steering wheel – mounted cruise control	○	●	●	●	●
– mounted audio and phone controls (WT and Custom require available Safety Confidence Package)	○	○	●	●	●
– leather-wrapped (LT requires available Convenience Package)	–	–	○	●	●
– heated (LT requires available Convenience Package; LT and LTZ models built on or after December 6, 2021, heated steering wheel feature will not function without dealer retrofit, expected Q3 2022; see dealer for details)	–	–	○	○	●
Sunroof – power (Crew Cab) (LT requires available Convenience Package II; LTZ requires available LTZ Convenience Package)	–	–	○	○	○
Temperature display – outside	●	●	●	●	●
Universal Home Remote – programmable, includes garage door opener (LT requires available Convenience Package II; LTZ requires available LTZ Convenience Package)	–	–	○	○	●
Upfitter switches – five 30-amp circuits for installation of aftermarket accessories <sup>1</sup>	○	○	○	○	○
Window – power-sliding rear with defogger (LT requires available Convenience Package II; LTZ requires available LTZ Convenience Package)	–	–	○	○	●
Windows – manual (Regular Cab)	●	–	–	–	–
– power with driver express-up/-down, all others express-down (standard on Double Cab and Crew Cab; Regular Cab WT requires available WT Convenience Package)	○	●	●	–	–
– power with driver and front passenger express-up/-down, rear express-down	–	–	–	●	●

	WT	CUSTOM	LT	LTZ	HIGH COUNTRY
<b>SEATING</b>					
Seats – front 40/20/40 split-bench, includes covered storage armrest	●	●	●	–	–
– front 40/20/40 split-bench, includes covered storage armrest and lockable underseat storage (standard on Regular Cab LT; Double Cab and Crew Cab LT require available Convenience Package)	–	–	○	●	–
– front bucket seats with center floor console (Double Cab and Crew Cab) (LT requires available Convenience Package; LTZ requires available LTZ Convenience Package, LTZ Plus Package, LTZ Premium Package, LTZ Texas Edition or LTZ Premium Texas Edition)	–	–	○	○	●
– rear 60/40 folding bench (Double Cab and Crew Cab on WT, Custom and LT; Double Cab on LTZ)	●	●	●	●	–
– rear 60/40 folding bench with seatback storage on left and right side, center foldout armrest with two cup holders (Crew Cab)	–	○	○	–	–
– rear 60/40 folding bench with seatback storage on left and right side and center foldout armrest with two cup holders and full cab width underseat storage (LT requires available Leather Package) (Crew Cab)	–	–	○	●	●
Seat – driver and front passenger 4-way manual adjusters	●	●	●	–	–
– driver 10-way power adjuster with power lumbar control (Custom requires available Custom Convenience Package and instrument panel- and bed-mounted 120-volt outlets; LT requires available Convenience Package)	–	○	○	●	●
– front passenger 10-way power adjuster with power lumbar control	–	–	–	●	●
Heated driver and outboard front passenger seats (LT requires available Convenience Package; models built on or after November 15, 2021, feature will not function on LT and LTZ without dealer retrofit, expected Q2 2022; see dealer for details)	–	–	○	○	●
Ventilated driver and front passenger seats (LTZ requires available LTZ Convenience Package; models built on or after November 15, 2021, feature will not function on LTZ without dealer retrofit, expected Q2 2022; see dealer for details)	–	–	–	○	●

<sup>1</sup> Equipment from independent suppliers is not covered by the GM New Vehicle Limited Warranty. GM is not responsible for the safety or quality of independent supplier alterations.

## SPECIFICATIONS (CONTINUED)

● STANDARD ○ AVAILABLE – NOT AVAILABLE

	WT	CUSTOM	LT	LTZ	HIGH COUNTRY
<b>ENTERTAINMENT</b>					
Audio – 2-speaker system (Regular Cab)	●	–	●	–	–
– 6-speaker system (Double Cab and Crew Cab)	●	●	●	●	–
– 7-speaker Bose premium audio system with Richbass subwoofer (LTZ requires available LTZ Convenience Package II)	–	–	–	○	●
Chevrolet Infotainment 3 system <sup>1</sup> with 7-inch diagonal color touch-screen, AM/FM stereo, Bluetooth® audio streaming <sup>2</sup> for two active devices, voice command pass-through to compatible phone, and Apple CarPlay <sup>®3</sup> and Android Auto <sup>™4</sup> compatibility	●	●	–	–	–
Chevrolet Infotainment 3 system <sup>1</sup> with 8-inch diagonal color touch-screen, AM/FM stereo, Bluetooth audio streaming <sup>2</sup> for two active devices, voice command pass-through to compatible phone, and Apple CarPlay <sup>3</sup> and Android Auto <sup>4</sup> compatibility	–	–	●	–	–
Chevrolet Infotainment 3 Plus system <sup>1</sup> with 8-inch diagonal HD color touch-screen, AM/FM stereo, Bluetooth audio streaming <sup>2</sup> for two active devices, voice command pass-through to compatible phone, wireless Apple CarPlay <sup>3</sup> and wireless Android Auto <sup>4</sup> compatibility, available Alexa Built-In <sup>5</sup> ; voice recognition and available In-Vehicle Apps <sup>6</sup> (LT requires available Convenience Package II or Advanced Trailing Package)	–	–	○	●	–
Chevrolet Infotainment 3 Premium system <sup>1</sup> with Navigation <sup>7</sup> and 8-inch diagonal HD color touch-screen, AM/FM stereo, Bluetooth audio streaming <sup>2</sup> for two active devices, voice command pass-through to compatible phone, wireless Apple CarPlay <sup>3</sup> and wireless Android Auto <sup>4</sup> compatibility, available Alexa Built-In <sup>5</sup> enhanced voice recognition, additional memory for available In-Vehicle Apps <sup>6</sup> and available Connected Navigation <sup>8</sup> (LTZ requires available LTZ Convenience Package II)	–	–	–	○	●

	WT	CUSTOM	LT	LTZ	HIGH COUNTRY
<b>ENTERTAINMENT (CONTINUED)</b>					
Media – two USB ports <sup>9</sup> on instrument panel	●	●	●	●	●
– SD card reader on instrument panel (LT requires available Convenience Package II or Advanced Trailing Package)	–	–	○	●	–
– two USB ports <sup>9</sup> ; SD card reader and auxiliary input jack inside front center floor console (LT requires available bucket seats; LTZ requires available LTZ Convenience Package)	–	–	○	○	●
– two USB ports <sup>9</sup> ; rear, charge-only (LT requires available Convenience Package)	–	–	○	●	●
SiriusXM <sup>®10</sup> – 3-month trial subscription (WT requires available OnStar <sup>®11</sup> ; Custom requires available Infotainment Package)	○	○	●	–	–
SiriusXM with 360L <sup>10,12</sup> – 3-month trial subscription (LT requires available Convenience Package II or Advanced Trailing Package)	–	–	○	●	●
Available Wi-Fi <sup>®</sup> Hotspot <sup>13</sup> for up to seven devices, includes 1 month of unlimited data (WT and Custom require available OnStar <sup>11</sup> )	○	○	●	●	●
Chevrolet Connected Access <sup>14</sup> with up to 10 years of standard connectivity, which currently enables features such as Vehicle Diagnostics and Dealer Maintenance Notification (WT and Custom require available OnStar <sup>11</sup> )	○	○	●	●	●
Wireless charging <sup>15</sup> (LTZ requires available LTZ Convenience Package II)	–	–	–	○	●

<sup>1</sup> Chevrolet Infotainment System functionality varies by model. Full functionality requires compatible Bluetooth and smartphone, and USB connectivity for some devices. <sup>2</sup> Go to [my.chevrolet.com/learnAbout/bluetooth](http://my.chevrolet.com/learnAbout/bluetooth) to find out which phones are compatible with the vehicle. Full Bluetooth feature functionality varies by device, model and software version. <sup>3</sup> Vehicle user interface is a product of Apple and its terms and privacy statements apply. Requires compatible iPhone and data plan rates apply. <sup>4</sup> Vehicle user interface is a product of Google and its terms and privacy statements apply. Requires the Android Auto app on Google Play and a compatible Android smartphone. Data plan rates apply. You can check which smartphones are compatible at [g.co/androidauto/requirements](http://g.co/androidauto/requirements). <sup>5</sup> Functionality is subject to limitations and varies by vehicle, infotainment system and location. Select service plan required. Certain Alexa Skills require account linking to use. Visit [onstar.com](http://onstar.com) for additional details. <sup>6</sup> Third-party trademarks are the property of their respective third-party owners and used under agreement. Requires active service plan and paid AT&T vehicle data plan. Visit [onstar.com](http://onstar.com) for details and limitations. <sup>7</sup> Map coverage available in the United States, Puerto Rico and Canada. <sup>8</sup> Connected Navigation and Real-time Points of Interest (POI) only available on properly equipped vehicles. Requires paid plan or trial. Map coverage available in the United States, Puerto Rico and Canada. Visit [onstar.com](http://onstar.com) for details and limitations. <sup>9</sup> Not compatible with all devices. <sup>10</sup> If you decide to continue service after your trial, your selected subscription plan will automatically renew thereafter. You will be charged at then-current rates. Fees and taxes apply. To cancel you must call SiriusXM at 1-866-635-2349. See SiriusXM Customer Agreement for complete terms at [siriusxm.com](http://siriusxm.com). All fees and programming subject to change. <sup>11</sup> When you select a monthly plan within 30 days of activating your 1-month trial, you'll receive the next 2 months of the plan you select at no additional charge when you associate an approved payment method on file to your account and authorize recurring payments for your service plan. The amount and frequency of each recurring payment is based upon the service(s) and payment interval(s) you select from the options provided. After the trial expires, OnStar will automatically bill your payment method monthly at then-current standard monthly rates. Plans containing 4G LTE data will be billed every 30 days by AT&T. You may cancel at any time by pushing your blue OnStar button or calling 1-888-466-7827. May not be combined with other offers or retroactively applied. Offer subject to change. <sup>12</sup> Certain features require a SiriusXM subscription and the Chevrolet Connected Access plan. See [siriusxm.com](http://siriusxm.com) and [onstar.com](http://onstar.com) for details and limitations. <sup>13</sup> Service varies with conditions and location. Requires active service and paid AT&T data plan. Visit [onstar.com](http://onstar.com) for details and limitations. Availability subject to change. <sup>14</sup> Standard connectivity available only to original purchaser for up to 10 years. Connected Access services are subject to change. Does not include emergency or security services. Diagnostic capabilities vary by model and service plan. Message and data rates may apply. Requires contact method on file and enrollment to receive alerts. Not all issues will deliver alerts. Visit [onstar.com](http://onstar.com) for details and limitations. <sup>15</sup> The system wirelessly charges one compatible mobile device. Some phones have built-in wireless charging technology and others require a special adaptor/back cover. To check for phone or other device compatibility, see [my.chevrolet.com/learn](http://my.chevrolet.com/learn) or consult your carrier.



# SPECIAL EDITIONS



Alaskan Snow Plow Special Edition!

● STANDARD   ○ AVAILABLE   – NOT AVAILABLE

	WT	CUSTOM	LT	LTZ	HIGH COUNTRY
MECHANICAL					
Alaskan Snow Plow Special Edition (4x4 models)	○	–	○	–	–
Snow Plow Prep/Camper Package, 18" high-gloss Black aluminum wheels (PTW), Chevytec spray-on bedliner with logo, roof marker lamps <sup>2</sup> and Alaskan decal (replaces standard 4x4 bed-mounted decal); LT includes rubberized-vinyl floor covering; 2500 HD WT and LT include LT275/70R18 mud-terrain tires					
Snow Plow Prep/Camper Package (4x4 models)	○	○	○	○	○
Power feed for roof emergency light, pass-through dash grommet, 220-amp alternator and skid plates and increased front GAWR (not available with Heavy-Duty Front Spring/Camper Package) (LTZ requires available Chevytec spray-on bedliner with logo; 3500 HD High Country SRW requires available Z71 Off-Road Package)					

<sup>1</sup> Snow plow upfit from an independent supplier. Equipment from independent suppliers is not covered by the GM New Vehicle Limited Warranty. GM is not responsible for the safety or quality of independent supplier alterations. <sup>2</sup> Restriction applies in California. See dealer for more information.

SPECIAL EDITIONS (CONTINUED)



Midnight Edition.



Carhartt Edition.

Return To Models

● STANDARD ○ AVAILABLE – NOT AVAILABLE

	WT	CUSTOM	LT	LTZ	HIGH COUNTRY
EXTERIOR					
Midnight Edition (Crew Cab 4x4 models)	–	–	○	○	–
Black Chevrolet lettered grille bar, Black grille inserts, bowtie emblem and Z71 badge, Black skid plate, Black Silverado, trim level and tonnage badging, Black bowtie emblem on steering wheel, Black hood vent surround, high-gloss Black-painted mirror caps and front and rear bumpers, 18" high-gloss Black aluminum wheels (PTW), LT275/70R18 mud-terrain tires, Chevytec spray-on bedliner with logo and 4-inch round Black assist steps (dealer-installed); LT includes high-intensity LED reflector headlamps, outside power-adjustable, power-folding and manual-extending vertical trailing mirrors with heated upper glass, auto-dimming driver side upper glass, puddle lamps, perimeter lighting and auxiliary lighting and interior auto-dimming rearview mirror; LTZ includes Black window beltline moldings and painted door handles (not available with Z71 Off-Road and Protection Package, Z71 Chrome Sport Edition, Z71 Sport Edition, pickup bed delete, any chrome assist steps or any accessory wheels; LT not available with Alaskan Snow Plow Special Edition or Texas Edition; LTZ not available with LTZ Premium Package, LTZ Texas Edition or LTZ Premium Texas Edition) (requires Black exterior color and Jet Black interior color; 3500 HD requires SRW; LT requires available All Star Edition and Z71 Off-Road Package; LTZ requires available LTZ Plus Package and Z71 Off-Road Package)					
Carhartt® Edition (2500 HD Crew Cab 4x4)	–	–	–	○	–
Mosaic Black Metallic Chevrolet lettered grille bar, chrome grille inserts with Black Z71 badges, Black skid plate, Black beltline moldings, Black bowtie emblem on steering wheel, body-color mirror caps, door handles, and front and rear bumpers, Black hood vent surround, Carhartt badging on doors and tailgate, Carhartt exterior pinstriping, Carhartt interior trim (including stitching and seat panels), Carhartt embroidered head restraints, all-weather floor liners with Carhartt logo, soft roll-up tonneau cover with Carhartt logo, roof marker lamps, 20" 10-spoke machined-aluminum wheels with Grazen Metallic-painted accents (Q86), LT275/65R20 all-terrain tires, Black Chevytec spray-on bedliner with logo, Safety Alert Seat <sup>1</sup> and 4-inch round Black assist steps (dealer-installed) (not available in the state of California or with Midnight Edition, Z71 Off-Road and Protection Package, Z71 Chrome Sport Edition, Z71 Sport Edition, LTZ Premium Package, LTZ Texas Edition, LTZ Premium Texas Edition, pickup bed delete, any chrome assist steps or any accessory wheels) (requires available LTZ Plus Package, LTZ Convenience Package II, Safety Package II, Z71 Off-Road Package and Mosaic Black Metallic exterior color)					

<sup>1</sup> Safety or driver assistance features are no substitute for the driver's responsibility to operate the vehicle in a safe manner. Read the vehicle Owner's Manual for important feature limitations and information.

SPECIAL EDITIONS (CONTINUED)



Z71 Chrome Sport Edition.



Z71 Sport Edition.

Return To Models

● STANDARD ○ AVAILABLE – NOT AVAILABLE

	WT	CUSTOM	LT	LTZ	HIGH COUNTRY
EXTERIOR (CONTINUED)					
Z71 Chrome Sport Edition (Crew Cab 4x4 models)	–	–	○	○	–
Body-color Chevrolet lettered grille bar, Black mesh grille with chrome accents and Z71 badge, chrome skid plate, body-color front and rear bumpers, LT275/65R20 all-terrain tires and Chevytec spray-on bedliner with logo (available with Summit White or Black exterior colors; 3500 HD requires SRW); LT includes 20" 10-spoke machined-aluminum wheels with Grazen Metallic-painted accents (Q86), high-intensity LED reflector headlamps, outside power-adjustable, power-folding and manual-extending vertical trairling mirrors with heated upper glass, auto-dimming driver side upper glass, puddle lamps, perimeter lighting and auxiliary lighting, interior auto-dimming rearview mirror, stainless steel window beltline moldings, chrome door handles, mirror caps and hood vent, and 4-inch round chrome assist steps (dealer-installed); LTZ includes 20" 6-spoke polished-aluminum wheels (RTH) and 6-inch rectangular chrome assist steps (not available with Midnight Edition, Z71 Off-Road and Protection Package, Z71 Sport Edition, pickup bed delete or accessory wheels; LT not available with Alaskan Snow Plow Special Edition; LTZ not available with Carhartt® Edition, LTZ Premium Package or LTZ Premium Texas Edition) (LT requires available All Star Edition or Texas Edition and Z71 Off-Road Package; LTZ requires available LTZ Plus Package or LTZ Texas Edition and Z71 Off-Road Package)					
Z71 Sport Edition (Crew Cab 4x4 models)	–	–	○	○	–
Body-color Chevrolet lettered grille bar, Black grille inserts with Z71 badge, Black bowtie emblems, body-color front and rear bumpers, Black skid plate, Black Silverado, trim level and tonnage badging, Black bowtie emblem on steering wheel, Black hood vent surround, high-gloss Black-painted mirror caps and door handles, 18" high-gloss Black aluminum wheels (PTW), LT275/70R18 mud-terrain tires, Chevytec spray-on bedliner with logo and 4-inch round Black assist steps (dealer-installed) (available with Summit White, Red Hot or Northsky Blue Metallic exterior colors); LT includes high-intensity LED reflector headlamps and outside power-adjustable, power-folding and manual-extending vertical trairling mirrors with heated upper glass, auto-dimming driver side upper glass, puddle lamps, perimeter lighting and auxiliary lighting and interior auto-dimming rearview mirror; LTZ includes Black window beltline moldings (not available with Midnight Edition, Z71 Off-Road and Protection Package, Z71 Chrome Sport Edition, pickup bed delete, any chrome assist steps or any accessory wheels; LT not available with Alaskan Snow Plow Special Edition or Texas Edition; LTZ not available with Carhartt Edition, LTZ Premium Package, LTZ Texas Edition or LTZ Premium Texas Edition) (requires Jet Black interior color; 3500 HD requires SRW; LT requires available All Star Edition and Z71 Off-Road Package; LTZ requires available LTZ Plus Package and Z71 Off-Road Package)					



## AVAILABLE PACKAGES



Z71 Off-Road Package.

### Return To Models

<sup>1</sup> Safety or driver assistance features are no substitute for the driver's responsibility to operate the vehicle in a safe manner. Read the vehicle Owner's Manual for important feature limitations and information. <sup>2</sup> Available on select Apple and Android devices. Service availability, features and functionality vary by vehicle, vehicle equipment, trim level, device and the plan you are enrolled in. Some features may require a working electrical system. User terms apply. Device data connection required. Visit [onstar.com](https://onstar.com) for details and limitations. <sup>3</sup> Chevrolet Infotainment System functionality varies by model. Full functionality requires compatible Bluetooth and smartphone, and USB connectivity for some devices. <sup>4</sup> If you decide to continue service after your trial, your selected subscription plan will automatically renew thereafter. You will be charged at then-current rates. Fees and taxes apply. To cancel you must call SiriusXM at 1-866-635-2349. See SiriusXM Customer Agreement for complete terms at [siriusxm.com](https://siriusxm.com). All fees and programming subject to change. Certain features require a SiriusXM subscription and the Chevrolet Connected Access plan. See [siriusxm.com](https://siriusxm.com) and [onstar.com](https://onstar.com) for details and limitations. <sup>5</sup> To avoid the risk of injury, never use recovery hooks to tow a vehicle. For more information, see the Recovery Hooks section of your Owner's Manual.

● STANDARD ○ AVAILABLE – NOT AVAILABLE

	WT	CUSTOM	LT	LTZ	HIGH COUNTRY
MECHANICAL					
Advanced Trailering Package	–	–	○	●	●
Hitch Guidance with Hitch View <sup>1</sup> ; Advanced Trailering System with Trailering App <sup>2</sup> and HD Rear Vision Camera <sup>1</sup> ; LT includes Chevrolet Infotainment 3 Plus system <sup>3</sup> with 8-inch diagonal HD color touch-screen and SiriusXM <sup>®</sup> with 360L <sup>4</sup> 3-month trial subscription					
Max Trailering Package (3500 HD Regular Cab DRW 2WD)	○	–	–	–	–
Heavy-Duty Front Spring/Camper Package, 17" forged polished-aluminum wheels (RS7) and Gooseneck/5th Wheel Package; not available with pickup bed delete (requires available Duramax 6.6L Turbo-Diesel V8 engine, WT Convenience Package and integrated trailer brake controller; does not include Chevytec spray-on bedliner and pre-drilled hole covers)					
Gooseneck/5th Wheel Package	○	○	○	○	–
Gooseneck/5th Wheel Prep Package; WT and Custom include integrated trailer brake controller and Chevytec spray-on bedliner with logo; LT includes Chevytec spray-on bedliner with logo; LTZ includes Chevytec spray-on bedliner with logo and Bed View Camera <sup>1</sup> (Regular Cab WT requires available WT Convenience Package)					
Gooseneck/5th Wheel Prep Package	○	○	○	○	○
Hitch platform to accept gooseneck or 5th-wheel hitch; includes hitch platform with tray to accept ball, stamped bed holes with removable caps installed and bed-mounted 7-pin trailer harness (WT, Custom, LT and LTZ require available Gooseneck/5th Wheel Package)					
Heavy-Duty Front Spring/Camper Package (not available with Snow Plow Prep/Camper Package)	○	○	○	○	○
Z71 Off-Road Package (4x4 models)	○	–	○	○	○
Off-Road suspension with off-road tuned twin-tube Rancho <sup>®</sup> shocks, Hill Descent Control and skid plates; Z71 fender badge replaces standard 4x4 bed-mounted decal on WT, LT and LTZ; LT and LTZ include Z71 grille logo; 2500 HD WT and LT include LT265/70R17E all-terrain tires (not available on DRW models)					
EXTERIOR					
Duramax and Appearance Package (2500 HD Crew Cab 4x4)	–	–	○	–	–
20" 10-spoke machined-aluminum wheels with Grazen Metallic-painted accents (Q86), LT275/65R20 all-terrain tires, chrome recovery hooks <sup>5</sup> and 4-inch round chrome assist steps (dealer-installed) (not available with Midnight Edition, Z71 Off-Road and Protection Package, Z71 Chrome Sport Edition, Z71 Sport Edition, pickup bed delete or any other assist steps) (requires available Duramax 6.6L Turbo-Diesel V8 engine)					
Z71 Off-Road and Protection Package (4x4 models)	–	–	○	○	–
Z71 Off-Road Package, Chevytec spray-on bedliner with logo and all-weather floor liners with Z71 logo; 2500 HD LT includes 18" machined-aluminum wheels with Silver-painted accents (PYV) and LT275/70R18E all-terrain tires; LTZ includes 20" 6-spoke polished-aluminum wheels (RTH) and LT275/65R20 all-terrain tires (not available on DRW models; LT requires Double Cab or Crew Cab)					

Some features shown may have limited, late or no availability. See dealer for feature availability.



## AVAILABLE PACKAGES (CONTINUED)

● STANDARD ○ AVAILABLE – NOT AVAILABLE

	WT	CUSTOM	LT	LTZ	HIGH COUNTRY
<b>INTERIOR</b>					
<b>WT Convenience Package</b>	○	–	–	–	–
Remote Keyless Entry, EZ Lift power lock and release tailgate, deep-tinted windows behind front doors, rear-window defogger, cruise control, and outside power-adjustable, manual-folding and manual-extending vertical trairling mirrors with heated upper glass, lower convex mirrors and integrated turn signal indicators; Regular Cab includes power windows with driver express-up/-down and passenger express-down and power door locks					
<b>WT Safety Package</b>	○	–	–	–	–
Lane Change Alert with Side Blind Zone Alert; Rear Cross Traffic Alert; front and rear chrome bumpers and Front and Rear Park Assist <sup>1</sup> (models built on or after December 20, 2021, Front and Rear Park Assist will not function on certain models without dealer retrofit, expected Q4 2022; see dealer for details) (requires available WT Convenience Package, 120-volt bed- and instrument panel-mounted power outlets [400 watts shared], integrated trailer brake controller and outside power-adjustable, power-folding and manual-extending heated, auto-dimming vertical trairling mirrors)					
<b>Custom Convenience Package</b>	–	○	–	–	–
Remote vehicle starter system, rear-window defogger, LED cargo area lighting in pickup bed, EZ Lift power lock and release tailgate, and integrated trailer brake controller					
<b>Custom Value Package</b>	–	○	–	–	–
Custom Convenience Package, Infotainment Package, and outside power-adjustable, power-folding and manual-extending vertical trairling mirrors with heated upper glass, auto-dimming driver side upper glass, puddle lamps, perimeter lighting, auxiliary lighting and interior auto-dimming rearview mirror					
<b>Infotainment Package</b>	–	○	–	–	–
Up to 3 months of OnStar <sup>®</sup> Safety & Security coverage; <sup>2</sup> available Wi-Fi <sup>®</sup> Hotspot; <sup>3</sup> Chevrolet Connected Access; <sup>4</sup> and SiriusXM <sup>®</sup> 3-month trial subscription					
<b>Cloth Rear Seat with Storage Package</b>	–	○	○	–	–
Rear in-seatback left and right storage compartments and center foldout armrest with two cup holders (LT requires available Convenience Package II)					

## Return To Models

<sup>1</sup> Safety or driver assistance features are no substitute for the driver's responsibility to operate the vehicle in a safe manner. Read the vehicle Owner's Manual for important feature limitations and information. <sup>2</sup> When you select a monthly plan within 30 days of activating your 1-month trial, you'll receive the next 2 months of the plan you select at no additional charge when you associate an approved payment method on file to your account and authorize recurring payments for your service plan. The amount and frequency of each recurring payment is based upon the service(s) and payment interval(s) you select from the options provided. After the trial expires, OnStar will automatically bill your payment method monthly at then-current standard monthly rates. Plans containing 4G LTE data will be billed every 30 days by AT&T. You may cancel at any time by pushing your blue OnStar button or calling 1-888-466-7827. May not be combined with other offers or retroactively applied. Offer subject to change. <sup>3</sup> Service varies with conditions and location. Requires active service and paid AT&T data plan. Visit [onstar.com](http://onstar.com) for details and limitations. <sup>4</sup> If you decide to continue service after your trial, your selected subscription plan will automatically renew thereafter. You will be charged at then-current rates. Fees and taxes apply. To cancel you must call SiriusXM at 1-866-635-2349. See SiriusXM Customer Agreement for complete terms at [siriusxm.com](http://siriusxm.com). All fees and programming subject to change. <sup>5</sup> Not compatible with all devices. <sup>6</sup> Chevrolet Infotainment System functionality varies by model. Full functionality requires compatible Bluetooth and smartphone, and USB connectivity for some devices. <sup>7</sup> Third-party trademarks are the property of their respective third-party owners and used under agreement. Requires active service plan and paid AT&T vehicle data plan. Visit [onstar.com](http://onstar.com) for details and limitations. <sup>8</sup> Certain features require a SiriusXM subscription and the Chevrolet Connected Access plan. See [siriusxm.com](http://siriusxm.com) and [onstar.com](http://onstar.com) for details and limitations.

	WT	CUSTOM	LT	LTZ	HIGH COUNTRY
<b>INTERIOR (CONTINUED)</b>					
<b>Uplevel Rear Seat with Storage Package</b>	–	–	○	●	●
Underseat storage, rear in-seatback left and right storage compartments and center foldout armrest with two cup holders (LT requires available Leather Package)					
<b>Convenience Package</b>	–	–	○	–	–
Dual-zone automatic climate control, 10-way power driver-seat adjuster with power lumbar control, leather-wrapped steering wheel, manual tilt/telescoping steering column, rear-window defogger, Keyless Open and Start, remote vehicle starter system, unauthorized entry theft-deterrent system, LED cargo area lighting in pickup bed, LED fog lamps, rear wheelhouse liners on SRW models, heated driver and front outboard passenger seats (models built on or after November 15, 2021, heated driver and front outboard passenger seats will not function without dealer retrofit, expected Q2 2022; see dealer for details) and heated steering wheel (models built on or after December 6, 2021, heated steering wheel feature will not function without dealer retrofit, expected Q3 2022; see dealer for details); Double Cab and Crew Cab include front 40/20/40 split-bench seat with underseat storage, two charge-only USB ports <sup>8</sup> in second row, and rear 12-volt auxiliary power outlet					
<b>Convenience Package II</b>	–	–	○	–	–
Instrument panel-mounted 120-volt power outlet and bed-mounted 120-volt power outlet (400 watts shared), Chevrolet Infotainment 3 Plus system <sup>7</sup> with available In-Vehicle Apps; <sup>8</sup> SiriusXM <sup>®</sup> with 360L <sup>5,9</sup> 3-month trial subscription, SD card reader, HD Rear Vision Camera; Hitch Guidance with Hitch View <sup>1</sup> and Advanced Trairling System; Double Cab and Crew Cab include Universal Home Remote and power-sliding rear window; Crew Cab includes Cloth Rear Seat with Storage Package (requires available Convenience Package and power-up/-down tailgate with power lock and release or Multi-Flex Tailgate)					
<b>Leather Package (Double Cab and Crew Cab)</b>	–	–	○	–	–
Jet Black or Gideon leather-appointed front seats; Crew Cab includes Uplevel Rear Seat with Storage Package (requires available Convenience Package II)					
<b>Remote Start Package</b>	–	–	○	–	–
Remote vehicle starter system and rear-window defogger					
<b>All Star Edition (Double Cab and Crew Cab)</b>	–	–	○	–	–
Convenience Package and Safety Package					

## AVAILABLE PACKAGES (CONTINUED)

● STANDARD ○ AVAILABLE – NOT AVAILABLE

	WT	CUSTOM	LT	LTZ	HIGH COUNTRY
<b>INTERIOR (CONTINUED)</b>					
<b>Texas Edition</b> (Double Cab and Crew Cab)	–	–	○	–	–
Convenience Package, Safety Package and Texas Edition badging (available only in Texas and surrounding states)					
<b>Safety Confidence Package</b>	○	○	–	–	–
Automatic Emergency Braking; <sup>1</sup> Forward Collision Alert <sup>1</sup> ; steering wheel-mounted audio and phone controls, and Driver Information Center with 4.2-inch diagonal color display; WT includes cruise control (not available with pickup bed delete)					
<b>Safety Package<sup>1</sup></b>	–	–	○	○	–
Lane Change Alert with Side Blind Zone Alert, Rear Cross Traffic Alert and Front and Rear Park Assist <sup>1</sup> (models built on or after December 20, 2021, Front and Rear Park Assist will not function on certain models without dealer retrofit, expected Q4 2022; see dealer for details) (LT requires available Convenience Package and outside power-adjustable, power-folding and manual-extending vertical trailing mirrors with heated upper glass, auto-dimming driver side upper glass, puddle lamps, perimeter lighting and auxiliary lighting; not available with pickup bed delete)					
<b>LTZ Convenience Package</b>	–	–	–	○	–
Front center floor console with USB ports; <sup>2</sup> SD card reader and auxiliary input jack, power-sliding rear window, Universal Home Remote, power-up/-down tailgate with power lock and release, and LED cargo area lighting in pickup bed					
<b>LTZ Convenience Package II</b>	–	–	–	○	–
Chevrolet Infotainment 3 Premium system <sup>3</sup> with Navigation <sup>4</sup> and additional memory for available In-Vehicle Apps <sup>5</sup> ; 7-speaker Bose premium audio system with Richbass subwoofer, HD Surround Vision <sup>1</sup> with two trailer camera provisions, Bed View Camera <sup>1</sup> and wireless charging <sup>6</sup> (requires available LTZ Convenience Package and Safety Package)					
<b>LTZ Plus Package</b>	–	–	–	○	–
LTZ Convenience Package and Safety Package (not available with LTZ Premium Package, LTZ Texas Edition or pickup bed delete)					

	WT	CUSTOM	LT	LTZ	HIGH COUNTRY
<b>INTERIOR (CONTINUED)</b>					
<b>LTZ Premium Package</b>	–	–	–	○	–
LTZ Convenience Package, LTZ Convenience Package II, Safety Package, Safety Package II, Technology Package, 20" 6-spoke polished-aluminum wheels (RTH) and LT275/65R20 all-terrain tires (not available with LTZ Plus Package, LTZ Texas Edition or pickup bed delete; not available on DRW models)					
<b>LTZ Texas Edition</b>	–	–	–	○	–
LTZ Convenience Package, Safety Package and Texas Edition badging (available only in Texas and surrounding states; not available with LTZ Plus Package, LTZ Premium Package or pickup bed delete)					
<b>LTZ Premium Texas Edition</b>	–	–	–	○	–
LTZ Convenience Package, LTZ Convenience Package II, Safety Package, Safety Package II, Technology Package, 20" 6-spoke polished-aluminum wheels (RTH), LT275/65R20 all-terrain tires and Texas Edition badging (available only in Texas and surrounding states; not available with LTZ Plus Package, LTZ Premium Package, LTZ Texas Edition or pickup bed delete; not available on DRW models)					
<b>Technology Package</b>	–	–	–	○	○
Rear Camera Mirror <sup>1</sup> and Head-Up Display; LTZ includes enhanced Driver Information Center (not available with pickup bed delete) (LTZ requires available LTZ Convenience Package II and Safety Package II; High Country requires available Safety Package II)					
<b>Safety Package II<sup>1</sup></b>	–	–	–	○	○
Forward Collision Alert, Lane Departure Warning, Automatic Emergency Braking, IntelliBeam, Following Distance Indicator and Safety Alert Seat (LTZ requires available Safety Package)					
<b>High Country Deluxe</b>	–	–	–	–	○
Safety Package II, Technology Package and Gooseneck/5th Wheel Package					

## Return To Models

<sup>1</sup> Safety or driver assistance features are no substitute for the driver's responsibility to operate the vehicle in a safe manner. Read the vehicle Owner's Manual for important feature limitations and information. <sup>2</sup> Not compatible with all devices. <sup>3</sup> Chevrolet Infotainment System functionality varies by model. Full functionality requires compatible Bluetooth and smartphone, and USB connectivity for some devices. <sup>4</sup> Map coverage available in the United States, Puerto Rico and Canada. <sup>5</sup> Third-party trademarks are the property of their respective third-party owners and used under agreement. Requires active service plan and paid AT&T vehicle data plan. Visit [onstar.com](http://onstar.com) for details and limitations. <sup>6</sup> The system wirelessly charges one compatible mobile device. Some phones have built-in wireless charging technology and others require a special adaptor/back cover. To check for phone or other device compatibility, see [my.chevrolet.com/learn](http://my.chevrolet.com/learn) or consult your carrier.

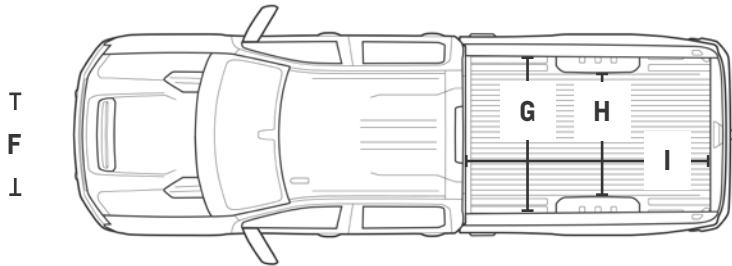
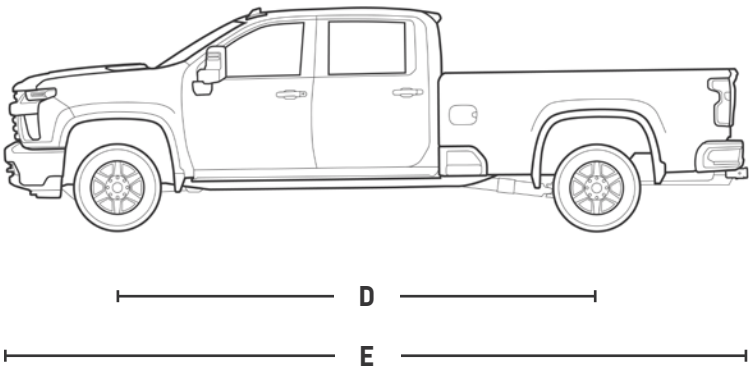
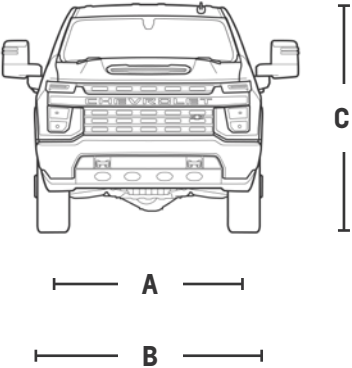
# SPECIFICATIONS (CONTINUED)

## MAXIMUM CAPACITIES

	REGULAR CAB	DOUBLE CAB	CREW CAB
Fuel tank (approximate)	36 gallons 28 gallons – Diesel	36 gallons 29 gallons – Standard Bed Diesel	36 gallons
Cargo volume <sup>1</sup>	83.5 cubic feet – Long Bed	69.6 cubic feet – Standard Bed 83.5 cubic feet – Long Bed	69.6 cubic feet – Standard Bed 83.5 cubic feet – Long Bed

## DIMENSIONS

	REGULAR CAB	DOUBLE CAB	CREW CAB
A – Front track	68.1"	68.1"	68.1"
B – Width	81.2" – SRW 96.8" – DRW	81.2" – SRW 96.8" – DRW	81.2" – SRW 96.8" – DRW
C – Height	79.9" – 2500 HD 80.2" – 3500 HD DRW 80.9" – 3500 HD SRW	79.8" – 2500 HD Long Bed 80.0" – 2500 HD Standard Bed 80.2" – 3500 HD Long Bed DRW 80.9" – 3500 HD Long Bed SRW	79.7" – 2500 HD Long Bed 79.8" – 2500 HD Standard Bed 80.0" – 3500 HD Long Bed DRW 80.7" – 3500 HD Long Bed SRW 80.9" – 3500 HD Standard Bed
D – Wheelbase	141.5"	149.4" – Standard Bed 162.5" – Long Bed	158.9" – Standard Bed 172.0" – Long Bed
E – Length	235.5"	240.4" – Standard Bed 256.5" – Long Bed	250.0" – Standard Bed 266.0" – Long Bed
F – Bed height	21.0"	21.0"	21.0"
G – Bed width, wall-to-wall	71.4"	71.4"	71.4"
H – Width between wheelhousings	50.5"	51.8" – Standard Bed 50.5" – Long Bed	51.8" – Standard Bed 50.5" – Long Bed
I – Bed length at floor	98.3"	82.3" – Standard Bed 98.3" – Long Bed	82.3" – Standard Bed 98.3" – Long Bed
Rear track	68.3" – SRW 75.0" – DRW	68.3" – SRW 75.0" – DRW	68.3" – SRW 75.0" – DRW
Head room (front/rear)	43.1"/–	43.0"/39.9"	43.0"/40.1"
Leg room (front/rear)	44.5"/–	44.5"/35.2"	44.5"/43.4"
Shoulder room (front/rear)	66.1"/–	66.0"/64.9"	66.0"/65.3"
Hip room (front/rear)	60.9"/–	61.2"/60.2"	61.2"/60.2"



<sup>1</sup> Cargo and load capacity limited by weight and distribution.

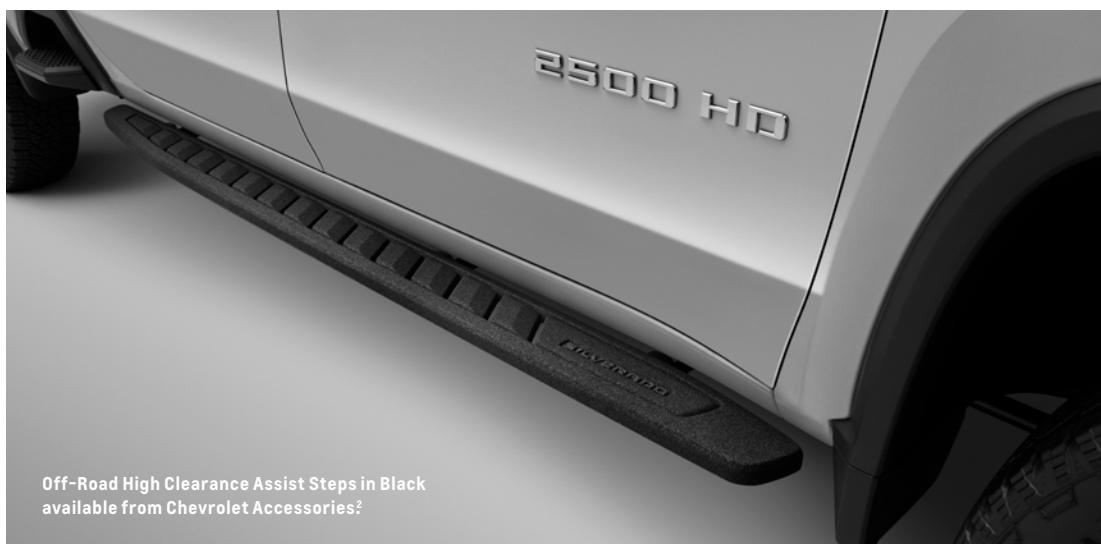
## ACCESSORIES



Recovery Hooks<sup>1</sup> in Chrome available from Chevrolet Accessories<sup>2</sup>



Soft Roll-Up Tonneau Cover available from Chevrolet Accessories<sup>2</sup>



Off-Road High Clearance Assist Steps in Black available from Chevrolet Accessories<sup>2</sup>



Illuminated Door Sill Plate and Premium All-Weather Floor Liners available from Chevrolet Accessories<sup>2</sup>

<sup>1</sup> To avoid the risk of injury, never use recovery hooks to tow a vehicle. See the Owner's Manual for more information. <sup>2</sup> Chevrolet Accessories are dealer-installed and covered by the GM 3-year/36,000-mile (whichever comes first) New Vehicle Limited Warranty when ordered with your new Silverado. See your dealer for details.

Some features shown may have limited, late or no availability. See dealer for feature availability.



## IMPORTANT INFORMATION



## EVERY STEP OF THE WAY.

You may be discovering Chevrolet through a personalized online shopping experience or enjoying every year of vehicle ownership. Either way, we're committed to providing the tools and programs you need to help you get the most out of your journey.

### Build & Price >

Create your perfect Chevrolet from start to finish.

### Chevy MyWay<sup>1</sup> >

Engage in a real-time virtual video experience with a Chevy product specialist.

### Chevrolet Complete Care >

Enjoy an owner benefit program that provides excellent service and support from day one.

### Discover My Chevrolet Rewards<sup>2</sup> >

Unlock a world of appreciation that's all about you and your Chevrolet. Start earning and redeeming today.

### Chevy Truck Legends >

Honoring our dependable, long-lasting trucks and the people who keep them going strong.

### Limited Warranty Coverage >

Discover all the ways Chevrolet is committed to providing an excellent ownership experience.



GM, the GM logo, Chevrolet, the Chevrolet logo, and the slogans, emblems, vehicle model names, vehicle body designs and other marks appearing in this brochure are the trademarks and/or service marks of General Motors, its subsidiaries, affiliates or licensors. ©2022 OnStar LLC. All rights reserved. Sirius, XM, SiriusXM and all related marks and logos are trademarks of Sirius XM Radio Inc. Amazon, Alexa and all related marks are trademarks of Amazon.com, Inc. or its affiliates. The Bluetooth word mark is a registered trademark owned by Bluetooth SIG, Inc., and any use of such mark by Chevrolet is under license. Bose is a registered trademark of the Bose Corp.

©2022 General Motors. All rights reserved. January 2022

## FIND NEW ROADS™

CHEVROLET.COM

<sup>1</sup> Chevy MyWay is available to anyone over 18 in the United States to access and experience via [chevrolet.com/myway](https://chevrolet.com/myway). <sup>2</sup> Must be 18 years or older. Points may be earned and redeemed only at GM entities, My Chevrolet Rewards participating dealers or third party retailers in the United States (excluding Puerto Rico, the U.S. Virgin Islands or Guam). Points are not earned on taxes, fees or body shop repair orders and expire without further notice upon Member Account deactivation. Visit [myChevroletrewards.com](https://myChevroletrewards.com) to view My GM Rewards Terms & Conditions.

Some features shown may have limited, late or no availability. See dealer for feature availability.