

THE 'UTE WITH HUSTLE, MUSCLE AND MONEY-SAVING WAYS

AUSTRALIA'S No. 1 PRESTIGE UTILITY!



**Valiant
Wayfarer**



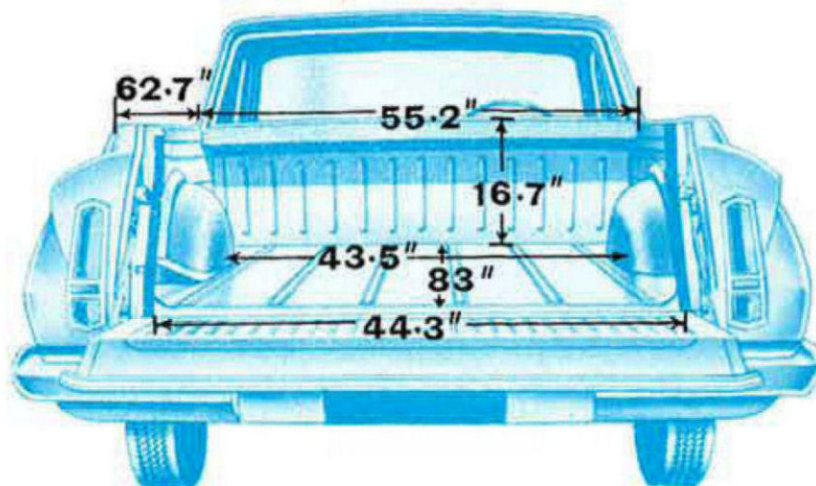
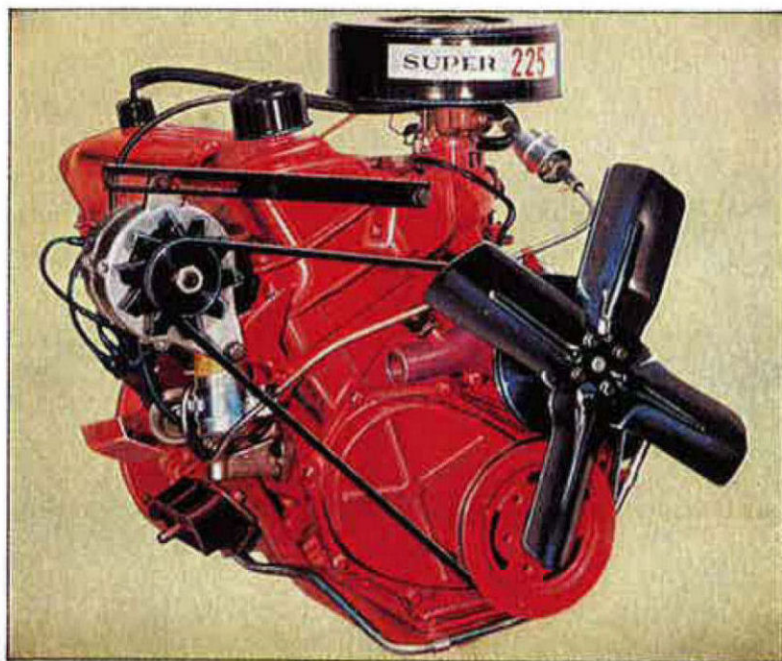
VALIANT WAYFARER UTILITY—
WHERE PRESTIGE AND TOP QUALITY
PAY OFF!

DIMENSIONS: Wheelbase 106"; Max. overall length 188.6"; Max. overall width 69.0"; Height 55.5"; Track—front 55.9", rear 55.6".

ENGINE: O.H.V. 30° inclined, 6 in line; Bore 3.40"; Stroke 4.125"; Piston displacement 225 cu. ins.; Compression ratio 8.4 : 1; Taxable H.P. 27.7; max. B.H.P. at r.p.m. 145 at 4,000; max. torque at r.p.m. 215 at 2,400.

ENGINE (General): Combustion chambers are the in-line wedge-shaped type; with large valves for efficient engine breathing. Exhaust valves have four bead-keepers, helping valves rotate, distributing wear evenly. Pistons, lightweight, tough aluminium alloy with two compression and one oil control ring. Crankcase ventilating system is a closed type with flow-control valve which also gives backfire protection and eliminates air pollution.

Single downdraft carburettor is calibrated to supply the exact fuel mixture for economical performance. Small diameter carburettor throat exercises better control of the fuel-air mixture. Automatic choke. Full-flow oil filter.



TRANSMISSION (TorqueFlite): The TorqueFlite transmission combines a torque convertor and an automatic planetary gearbox. The torque convertor extends torque multiplication over a wide range of engine speeds. The automatic gearbox is controlled by hydraulic pressure which varies according to the throttle opening and road speed.

Transmission oil is water-cooled and has its own oil filter. Gear ratio and gears used in each selected position.

"R"—Reverse gear; 2.2 to 1 ratio.

"N"—Neutral.

"D"—1st, 2nd and Drive; 2.45, 1.45 and 1.00 to 1.

"2"—1st and 2nd; 2.45 to 1. and 1.45 to 1.

"1"—1st; 2.45 to 1.

Operation is by quadrant and lever set on the steering column. Quadrant is illuminated for easy recognition at night and has a "park" position which clears the transmission and locks the automatic unit.

TRANSMISSION (Manual): 3-speed and reverse all forward gears synchromesh. Ratios—1st 2.95 : 1, 2nd 1.83 : 1, 3rd 1.00 : 1, Reverse 3.80 : 1.

SPECIFICATIONS:

BRAKES: Duo-servo, self adjusting, hydraulic. Total effective area 153.5 sq. ins. Cast iron brake drums. Parking brake operated by "T" handle, under R.H. side of instrument panel; operates on rear wheels.

REAR AXLE: Hypoid-semi floating, 2 pinion differential. Gear Ratio 3.23 to 1.

SUSPENSION: Front—Independent, lateral, non-parallel control arms with torsion bars. Rear—Longitudinal leaf springs.

STEERING: Linkage—Parallel idler arms with equal length tie rods.

WHEELS AND TYRES: Wheels—Steel disc. Safety rims. Tyres 6.50 x 14 x 6 ply black.

CAPACITIES: Cooling system—18 pints; Fuel tank 14.3 gallons; Crankcase (less oil filter) 6.6 pints; Crankcase (inc. oil filter) 8.3 pints. Transmission—manual 4.1 pints, automatic 13.3 pints. Rear axle 2.2 pints.

WEIGHTS: Capacity 1200 lbs.

Specialised Service and Genuine Chrysler Parts available Nationwide.

The policy of Chrysler-Australia Limited is one of continual improvement in design and manufacture, wherever possible to assure a still finer car. Hence specifications, equipment and prices are subject to change without notice.

AP7 - VW - 18



CHRYSLER
AUSTRALIA LTD.

THE 'UTE WITH HUSTLE, MUSCLE AND MONEY-SAVING WAYS



AUSTRALIA'S No. 1 PRESTIGE UTILITY!



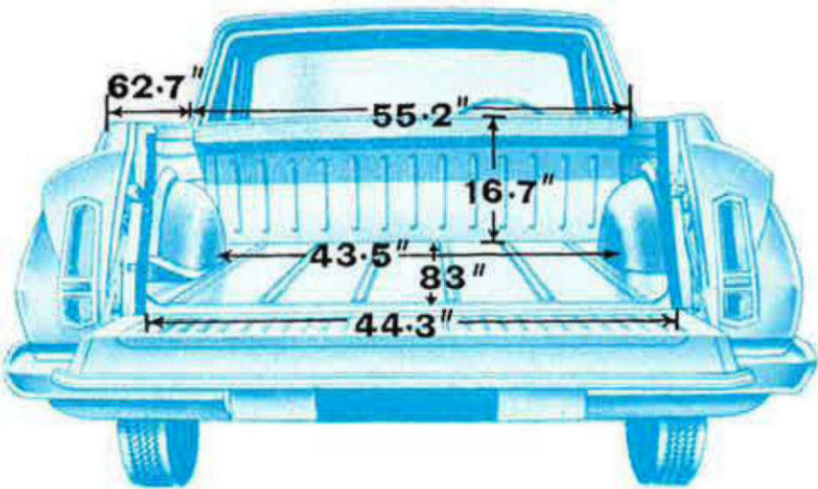
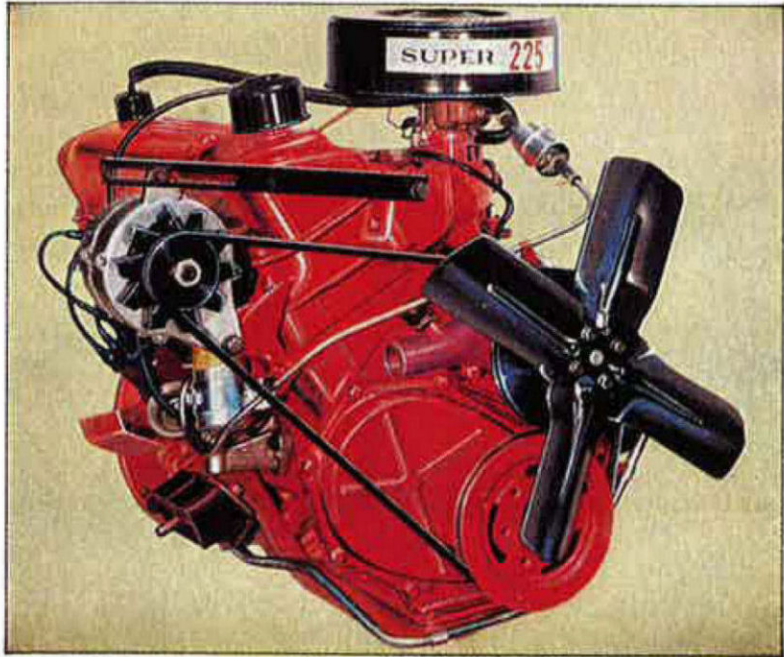
Valiant Wayfarer 225



VALIANT WAYFARER UTILITY— WHERE PRESTIGE AND TOP QUALITY PAY OFF!

DIMENSIONS: Wheelbase 106"; Max. overall length 188.6"; Max. overall width 69.0"; Height 55.5"; Track—front 55.9", rear 55.6".
ENGINE: O.H.V. 30° inclined, 6 in line; Bore 3.40"; Stroke 4.125"; Piston displacement 225 cu. ins.; Compression ratio 8.4 : 1; Taxable H.P. 27.7; max. B.H.P. at r.p.m. 145 at 4,000; max. torque at r.p.m. 215 at 2,400.

ENGINE (General): Combustion chambers are the in-line wedge-shaped type; with large valves for efficient engine breathing. Exhaust valves have four bead-keepers, helping valves rotate, distributing wear evenly. Pistons, lightweight, tough aluminium alloy with two compression and one oil control ring. Crankcase ventilating system is a closed type with flow-control valve which also gives backfire protection and eliminates air pollution. Single downdraft carburettor is calibrated to supply the exact fuel mixture for economical performance. Small diameter carburettor throat exercises better control of the fuel-air mixture. Automatic choke. Full-flow oil filter.



TRANSMISSION (TorqueFlite): The TorqueFlite transmission combines a torque convertor and an automatic planetary gearbox. The torque convertor extends torque multiplication over a wide range of engine speeds. The automatic gearbox is controlled by hydraulic pressure which varies according to the throttle opening and road speed. Transmission oil is water-cooled and has its own oil filter. Gear ratio and gears used in each selected position.

"R"—Reverse gear; 2.2 to 1 ratio.
"N"—Neutral.
"D"—1st, 2nd and Drive; 2.45, 1.45 and 1.00 to 1.
"2"—1st and 2nd; 2.45 to 1. and 1.45 to 1.
"1"—1st; 2.45 to 1.

Operation is by quadrant and lever set on the steering column. Quadrant is illuminated for easy recognition at night and has a "park" position which clears the transmission and locks the automatic unit.

TRANSMISSION (Manual): 3-speed and reverse all forward gears synchromesh. Ratios—1st 2.95 : 1, 2nd 1.83 : 1, 3rd 1.00 : 1, Reverse 3.80 : 1.

SPECIFICATIONS:

BRAKES: Duo-servo, self adjusting, hydraulic. Total effective area 153.5 sq. ins. Cast iron brake drums. Parking brake operated by "T" handle, under R.H. side of instrument panel; operates on rear wheels.

REAR AXLE: Hypoid-semi floating, 2 pinion differential. Gear Ratio 3.23 to 1.

SUSPENSION: Front—Independent, lateral, non-parallel control arms with torsion bars. Rear—Longitudinal leaf springs.

STEERING: Linkage—Parallel idler arms with equal length tie rods.

WHEELS AND TYRES: Wheels—Steel disc. Safety rims. Tyres 6.50 x 14 x 6 ply black.

CAPACITIES: Cooling system—18 pints; Fuel tank 14.3 gallons; Crankcase (less oil filter) 6.6 pints; Crankcase (inc. oil filter) 8.3 pints. Transmission—manual 4.1 pints, automatic 13.3 pints. Rear axle 2.2 pints.

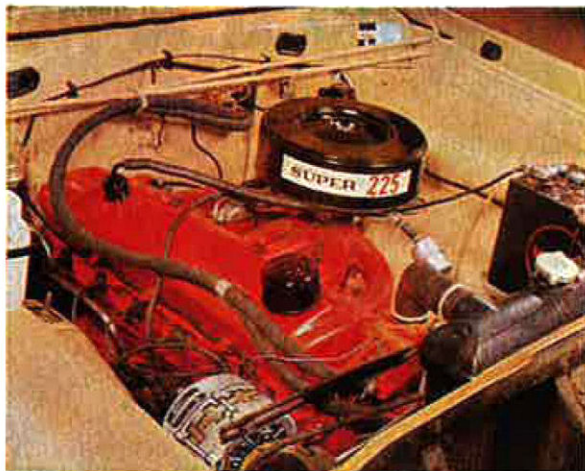
WEIGHTS: Capacity 1200 lbs.
Specialised Service and Genuine Chrysler Parts available Nationwide.

The policy of Chrysler-Australia Limited is one of continual improvement in design and manufacture, wherever possible to assure a still finer car. Hence specifications, equipment and prices are subject to change without notice.

Valiant Wayfarer 225



YOU DRIVE IN STYLE: Valiant Wayfarer is a blending of the stylish and practical: Smart trims, arm-rests and courtesy switches both doors, 2-speed electric windscreen wipers, full width instrument panel crash pad, rear parcel shelf, windshield washers.



THE RIGHT POWER FOR UTILITY WORK: Valiant's 225 Slant "6" has high performance, power in reserve, plus the capacity to keep on working at its peak for long hours. Result, more trips per day, less time off the road; Greater profit for you.



LOTS OF LOADSPACE: Load length at floor level nearly seven feet. Utility body of double-wall construction for strength and rigidity. One piece, tough wood floor with steel skid strips. Finish in tough, durable, easy to maintain Acrylic Enamel.

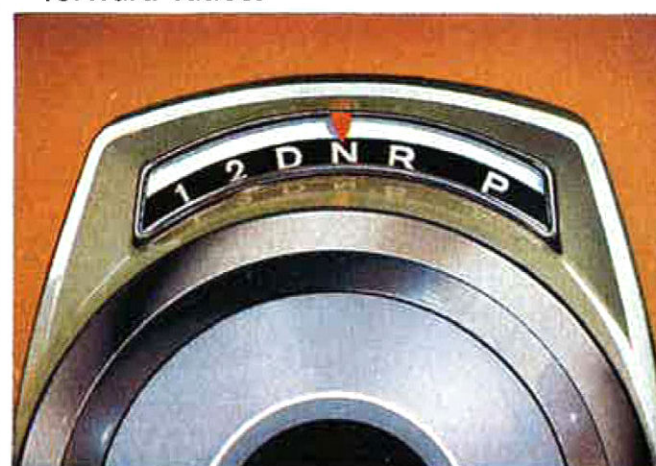


EASY TO LOAD AND A TAILGATE THAT CAN TAKE THE LOAD: Tailgate is wide opening, has low loading height. Is of double-wall construction for great strength, hinges and locks extra strong too. Spare wheel located in under-floor compartment.

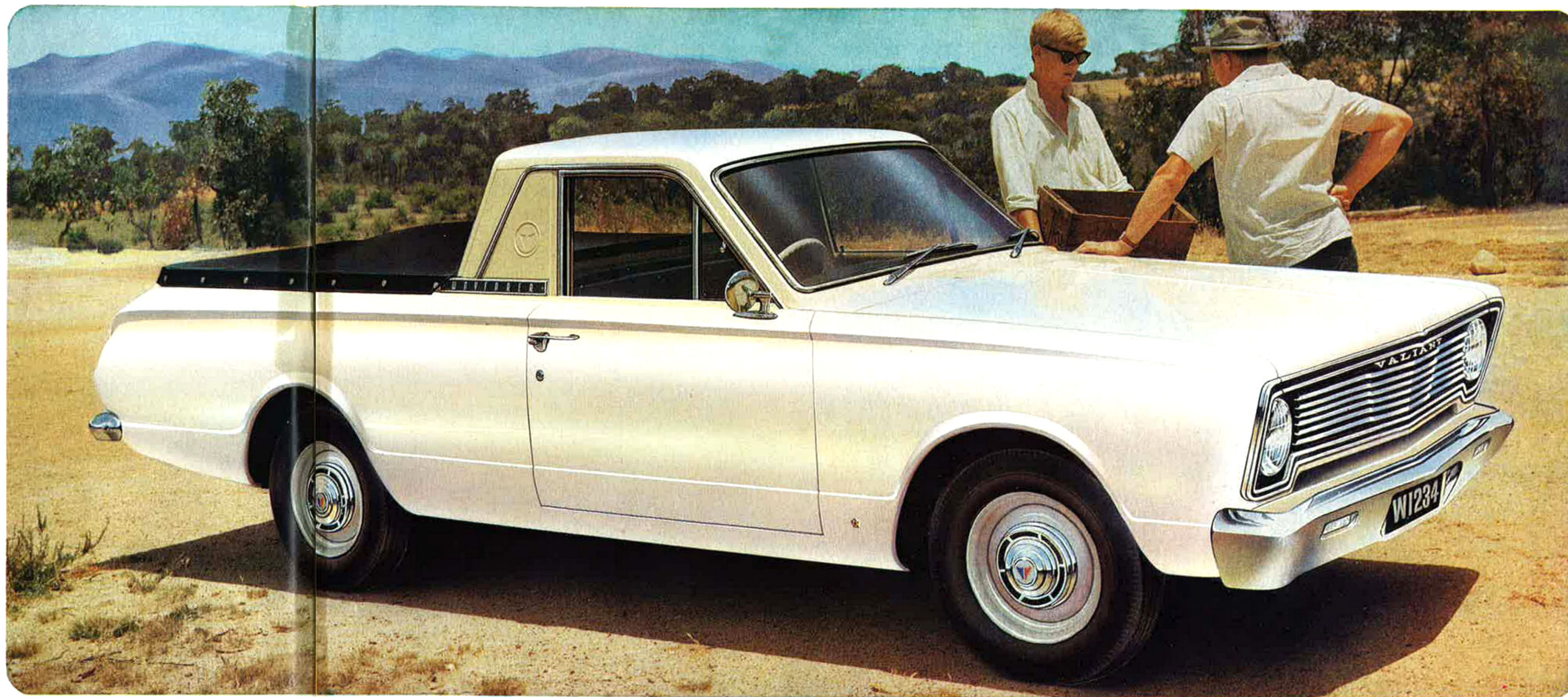
ANYWHERE YOU DRIVE
THE GOINGS SMOOTH,
STABLE AND SURE!



Front torsion-bars, with superior stability and riding smoothness offer big advantages for utility work. Wide tracks add to stability. Brakes have ample stopping power for performance and load and are self-adjusting. Manual transmission gear box is now fully synchromesh in all forward ratios.



AUTOMATIC DRIVING AT ITS BEST: Valiant Wayfarer is also available with 3-speed TorqueFlite automatic transmission. The combination of fast, smooth gearchanges plus Valiant 225's reserve of power provides automatic driving unmatched by any other utility.



MANUAL TRANSMISSION MODEL NOW SYNCHROMESH IN ALL FORWARD RATIOS:

Having synchromesh in first gear as well as in second and top is a big advantage for the driver of a utility. Easy, quick changes up or down when driving in heavy, peak-hour traffic, a quick change down when engine braking is needed on steep hills etc. Synchromesh in all forward gears is just one of the many ways in which Valiant Wayfarer has been designed to give the maximum in driving ease and safety.

A Valiant Wayfarer is far more than a good and willing worker. It is an investment in a top quality "tool-of-trade" for so many uses in country and city. Top quality always pays off, regardless of the type of work. It pays off in greater use, more efficient use and provides you with an asset that is worth more when it's time to trade . . . It is, in fact, good business.

But there is also a second side to Valiant Wayfarer. Its crisp, clean, symmetrical styling and sedan comfort provide a vehicle you are proud to drive, not only during the working day, but also after hours. And always there is that added zest to motoring that only Valiant 225 performance can provide. This year, then, and with this new model, take the step up to a Valiant Wayfarer 225. It's an easy step and one which will make the world of a difference to your coupe utility operations.

**THE NEW SMARTER
WAY TO DRIVE
WITH PLEASURE
AND PROFIT!**