

2022 GLADIATOR

Jeep®



# FIND SOME ROOM TO BREATHE

**THE TRUCK THAT DOES IT ALL:** Hauls, tows and delivers you to the great wide open with legendary capability, outstanding utility, intuitive technology and trademark open-air freedom that the Jeep® Brand is known for.

## TABLE OF CONTENTS

TOWING .....	3	TRUCK BED .....	17
PAYLOAD .....	4	STORAGE.....	18
4x4 SYSTEMS .....	5	MOJAVE.....	20
CAPABILITY .....	6	HIGH ALTITUDE.....	21
OPEN-AIR FREEDOM.....	9	RUBICON®.....	22
HIGH ALTITUDE.....	11	OVERLAND® .....	23
INTERIOR .....	12	SPORT S .....	24
UCONNECT® .....	14	WILLYS.....	25
SAFETY & SECURITY....	15	SPECIFICATIONS.....	26
POWERTRAINS.....	16	EXTERIOR COLOURS ..	27

**#1 FOR INITIAL QUALITY**

IN THE U.S. AMONG MID-SIZE PICKUPS 2021\*



**NEW FOR 2022**

AVAILABLE  
**HALF DOORS**  
AS PART OF THE  
DUAL DOOR GROUP

AVAILABLE  
**DOORS-OFF<sup>1†</sup>**  
**MIRROR KIT**

AVAILABLE  
**SUNRIDER® FLIP TOP**  
**FOR HARDTOP**

AVAILABLE  
**CORNING® GORILLA®**  
**GLASS WINDSHIELD**

STANDARD  
**JEEP AIR**  
**FILTRATION SYSTEM**

\*For J.D. Power 2021 U.S. Award Information visit [jdpower.com/awards](http://jdpower.com/awards).  
†A note about this brochure: all disclosures can be found on the last page.

# NO TOY LEFT BEHIND

JEEP® GLADIATOR RIDES AHEAD OF ALL THE REST, ENGINEERED TO PULL, PACK AND DO EVERYTHING FOR THOSE WHO DEMAND MUCH, MUCH MORE FROM A PICKUP TRUCK.

## 7,650-LB MAX TOWING

### MAX TOW PACKAGE WITH 4.10 AXLE RATIO

For those who want to take all the toys along for the ride, this is your must-have feature. The Max Tow Package with 4.10 Axle Ratio delivers an impressive max gas towing of 3,470 kg (7,650 lb), allowing you to add on a lot of fun.

The Package includes a 240-amp alternator, available on Sport S models equipped with the 3.6L Pentastar™ V6 engine and 8-speed automatic transmission.



Sport S in Bright White  
Properly secure all cargo.  
Always tow within the vehicle's capacity.



AVAILABLE  
**BEST-IN-CLASS  
4x4 PAYLOAD<sup>2</sup>**

**1,700-LB  
(771-kg)**

This versatile 153.1 x 144.2-cm (60.3 x 56.8-inch) truck bed is built to carry most everything to virtually every place you dream of reaching. Its three-position tailgate, available spray-in bedliner, tonneau cover and available 115-volt auxiliary outlet all add more function to your fun.

Lower the gate and take advantage of a 206.5 x 113.8-cm (81.3 x 44.8-inch) load floor (with tailgate down) that can accommodate a whole lot of ATV fun. Well-positioned tie-downs help secure your load. LED bed lighting illuminates nighttime on- and off-loading.

Rubicon® in Silver Zynith  
Properly secure all cargo.



Rubicon in Bright White



Rubicon in Firecracker Red



**COMMAND-TRAC®  
4x4 SYSTEM**

This part-time, shift-on-the-fly system divides torque 50/50 between front and rear axles, shifts smoothly at speeds up to 72 km/h (45 mph) and has a 2.72:1 low-range gear ratio. Standard on Sport S, Willys, Overland®, High Altitude and Mojave.

**SELEC-TRAC® FULL-TIME  
4x4 SYSTEM**

With an active 4x4 transfer case, this system does all the thinking, sending torque to the wheels with the most grip and providing continuous, optimum traction for all types of conditions. The Smart Lock feature keeps the system engaged during off-roading or slippery road conditions. Available on Sport S, Overland, High Altitude and Mojave.

**4  
X  
4  
4**

**ROCK-TRAC®  
4x4 SYSTEM**

Rubicon® rides with this extreme 4x4 system. Its 4:1 low-gear ratio allows Jeep® Gladiator Rubicon to crawl at a low speed for greater control and increases the amount of torque available at the wheels. Standard on Rubicon.

**ROCK-TRAC FULL-TIME  
4x4 SYSTEM**

This system offers the capability of Rock-Trac® with the added convenience of a full-time, active transfer case that can provide optimal traction over changing road conditions. Available on Rubicon.



Rubicon® in Granite Crystal Metallic



# THE GUTS TO GET YOU THERE

When the going gets tough, Jeep® Gladiator gets you where you need to go. You're supported with a full lineup of features that help you manage your progress and protect your vital parts while keeping you informed of vehicle performance all along the way.

#### **SELEC-SPEED® CONTROL**

Manages vehicle speeds of 0.96 km/h to 8 km/h (0.6 mph to 5 mph) in 4-LO while traversing off-road terrain without requiring the driver to control the throttle or the brake. This helps the driver focus on steering the vehicle, letting Gladiator put the right amount of power or braking onto the ground. Available. Included with 8-speed automatic transmission.

#### **HILL START ASSIST (HSA)**

Works to prevent Gladiator from rolling when starting on an uphill gradient. Standard.

#### **SELECTABLE TIRE-FILL ALERT**

When you're airing down tires for off-road situations, the system will chirp the horn when a preselected pressure is reached. When you're adding air back, it chirps the horn upon reaching the recommended on-road pressure. Standard.

#### **STEEL BUMPERS**

Built with ultra-strong steel to take the punishment of the trails. The front bumper can accept a winch, features integrated LED fog lamps and has removable end caps to help manoeuvre through tight spots. Available.

#### **SKID PLATES**

All models feature up to four skid plates/bars, made from lightweight high-strength steel, to protect the underbody. Both Rubicon® and Mojave add heavy-gauge steel rock rails for rocker panel protection, while Rubicon also includes rock rails mounted behind the rear wheels to protect the bed. Standard.

#### **TOW HOOKS**

Every Gladiator gets two up front and at least one in back. Rubicon stands out with Red-painted tow hooks, and on Mojave, they're a distinctive Orange colour, with both models getting two hooks in front and two in the rear.



**OFF-ROAD PAGES** Access real-time performance data like suspension travel or keep an eye on your tilt and pitch. In-depth vehicle diagnostics, including wheel turn, articulation and transmission temperature, all help to provide an optimized experience. Available.



**FORWARD-FACING OFF-ROAD TRAILCAM<sup>3</sup> CAMERA** Mounted within the grille, provides an up-close view of the trail directly in front of your vehicle, helping you navigate over and around obstacles. Available.



**PARKVIEW® REAR BACK-UP CAMERA<sup>3</sup> WITH AVAILABLE TRAILER HITCH ZOOM<sup>3</sup>** When the vehicle is in Reverse, the Uconnect® screen displays a wide-angle view of what's immediately behind your vehicle, revealing objects that may have been out of your sight line. On-screen dynamic grid lines help you see your back-up path or line up a trailer to your hitch. You'll also be able to keep an eye on your tow load while in motion when properly equipped.

# LOCKED IN YET FLEXIBLE

## TRU-LOK® DIFFERENTIALS

Front and rear electronic-locking differentials deliver maximum torque to both wheels, maintaining forward momentum for the ultimate in 4x4 traction. An instrument-panel-mounted rocker switch can lock either the rear (on Mojave models) or both (on Rubicon® models) axles. Paired with the Rock-Trac® 4x4 system on Rubicon models. The rear axle can also be locked in 4-HI.



## OFF-ROAD+

When engaged, it automatically deciphers the type of terrain Jeep® Gladiator is operating on and makes adjustments to key systems, including throttle, Selec-Speed® Control, traction control and transmission shift mode, for optimal performance. If enabled in 4-HI, it tailors operation for higher-speed sand performance. If enabled in 4-LO, it adjusts operation for low-speed rock-crawling manoeuvres. Standard on Mojave and Rubicon models.

## FRONT SWAY BAR DISCONNECT SYSTEM

Flip a switch and the sway bar can be disconnected in 4-LO and 4-HI, allowing the front suspension to travel up to an additional 30 percent. It reconnects automatically at speeds above 28 km/h (18 mph). Standard only on Rubicon models.



TRAIL RATED®



A JEEP® GLADIATOR BEARING A TRAIL RATED® BADGE EXCELS IN THESE CATEGORIES:

ARTICULATION

A higher level of suspension travel allows better control over varied terrain.

TRACTION

Efficiently transfers power to traverse varied surfaces with consistent grip.

GROUND CLEARANCE

Approach, breakover and departure angles are all maximized.

MANOEUVRABILITY

Precise, responsive steering and an optimized wheelbase.

WATER FORDING<sup>4</sup>

Can traverse water depths up to 76 cm (30 inches).

DESERT RATED®



GLADIATOR MOJAVE IS DESERT RATED®, DEVELOPED TO STAND OUT IN THESE CATEGORIES:

RIDE CONTROL AND STABILITY

A higher level of suspension travel allows better control over undulating terrain.

TRACTION

Efficiently transfers power to traverse sand and loose dirt with consistent grip.

GROUND CLEARANCE

Approach, breakover and departure angles are all maximized.

MANOEUVRABILITY

Precise steering and an optimized wheelbase fortify expert navigation.

DESERT PROWESS

Withstands intense heat, coarse sand and intrusive dust.



# PROUD TO BARE IT ALL

UNFETTERED, OPEN-AIR FREEDOM IN EVERY DIRECTION MAKES JEEP® GLADIATOR ABSOLUTELY UNIQUE. INVITE THE SUNSHINE INSIDE FOR THE RIDE, ALONG WITH ALL THE GOODS YOU WANT TO CARRY IN THE TRUCK BED. LET NOTHING STOP YOU FROM FEELING THE WIND IN YOUR HAIR, WITH NO SEPARATION BETWEEN YOU AND THE SCENERY AT HAND.

## REMOVABLE<sup>1</sup> TOPS

Open-air driving has never been more fun than with your choice of the standard Sunrider® Soft Top, the available Premium Sunrider Soft Top, available Freedom Top® Hardtop or available Sunrider Flip Top for Hardtop.

## FOLD-DOWN WINDSHIELD<sup>1</sup>

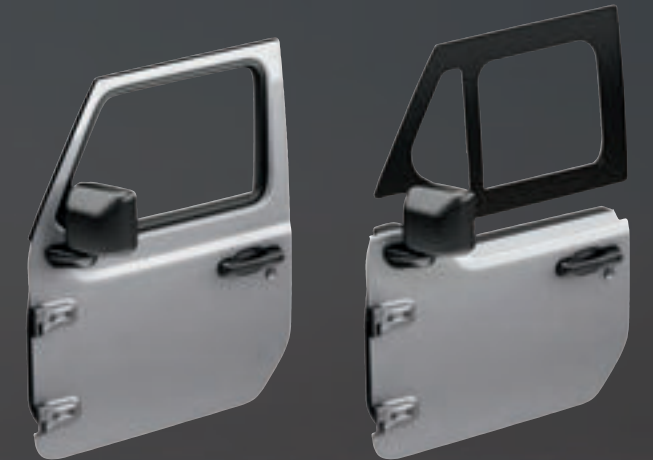
The aluminum-framed windshield is easy to unfasten, fold down and secure to the hood with available straps.

## REMOVABLE<sup>1</sup> DOORS

Made of lightweight aluminum, the doors are designed for easy removal<sup>1</sup> with the included TORX® toolkit.

## NEW DUAL DOOR GROUP

For every reason and season, maximize your options with a set of both full doors with power glass windows and new half doors that offer an undeniable open-air look and feel while still having the benefits of power, heated mirrors, remote keyless entry and power locks. Half doors are available with your choice of a base upper door, a premium upper door or no upper door at all.



## NEW DOORS-OFF<sup>1</sup> MIRROR KIT

For use with doors off, these available side mirrors quickly and easily install for an enhanced rear view. Mirrors include a built-in breakaway feature preventing damage while in tight spaces on the road or trail. Available from Mopar®.



# CHOOSE HOW TO TOP IT



## SUNRIDER® SOFT TOP

Standard on all Jeep® Gladiator models (excluding Overland®) with an easy-to-use zipperless design. Its simple operation allows the top to glide open with the help of spring-loaded support bars. Crafted from heavy-duty, waterproof cloth material and comes in Black. Upgrade to the Premium Sunrider® Soft Top with a higher grade of fabric. Available.



## FREEDOM TOP® MODULAR HARDTOP

This three-piece hardtop is light and easy to remove! For a full open-air experience, you can take off<sup>1</sup> all three sections or let in the sun by just removing<sup>1</sup> the two front panels. Standard in Black on Overland models. Available in Black or body-colour.



## NEW FOR 2022 SUNRIDER FLIP TOP FOR HARDTOP

Give you and your passengers a whole new way to see the sun, moon and stars with the Mopar® Sunrider Flip Top for Hardtop. Made with premium materials that allow for year-round use, the Sunrider Flip Top for Hardtop replaces the Freedom Panels with a soft top that can easily open — and close — in seconds, so your passengers can enjoy the great wide open whenever they like. Available.



Rubicon® in Sarge



Properly secure all cargo.

OPEN-AIR FREEDOM | 10

# SOPHISTICATED PRESENCE



Jeep® Gladiator High Altitude stands with a premium profile, making its presence known with a wider stance, standard LED Lighting Group and 20-inch wheels. Choose your favourite body-colour and you'll see it reflected in upscale style on the standard Freedom Top® Modular Hardtop, fender flares and bumpers. A standard Safety Group of features delivers added confidence to its exceptional capability.



High Altitude in Bright White





# RELAX IN A COZY CABIN

INSPIRED BY JEEP® BRAND HERITAGE, THIS INTERIOR IS ALSO INSPIRED BY MODERN DESIGN, FILLED WITH PREMIUM MATERIALS THAT OFFER REAL CREATURE COMFORTS AND INFUSED WITH THE LATEST LEAPS IN MUST-HAVE TECHNOLOGY.

## NEW JEEP® AIR FILTRATION SYSTEM

We have enhanced the air filtration systems in Jeep® Gladiator to provide even cleaner air for you and your family. The new Clean Air System filters 95 percent of air particulates, reducing pollen, allergens and bacteria, making it the cleanest cabin air ever in a Gladiator. Standard.

## REMOTE START SYSTEM

Climb into a pleasantly preheated or precooled Jeep Gladiator — up to a 91-metre (300-foot) range. Available.

## HEATED MIRRORS

Keep ice from building up and blocking your view with the safety and security of heated side mirrors. Available.

## HEATED STEERING WHEEL

Set this optional feature to automatically warm the full 360° circumference of the wheel when temps dip below 4.4° C (40° F). Available.

## HEATED FRONT SEATS

You have three adjustments to choose from for each seat, so you can tailor your level of warmth to weather conditions and personal preference. Available.

## REMOTE PROXIMITY KEYLESS ENTRY

Keep the key fob in your pocket, and you can simply open the door, get comfortably seated with your foot on the brake, press the Start button and head out. Available.

## DUAL-ZONE AUTOMATIC TEMPERATURE CONTROL

Constantly adjusts air temperature inside the cabin to create separate customized environments for driver and front passenger. Available.



# ENJOY IT FROM THE INSIDE OUT

- 1. NEW WINDSHIELD WITH CORNING® GORILLA® GLASS** Three times as tough as conventional glass, this windshield uses soda-lime glass on the outside of the vehicle and Corning® Gorilla® Glass on the inside, creating a hybrid that is lighter, clearer and even designed to withstand higher forces of impact than a standard windshield. Available.
- 2. WEATHERPROOF PUSH-BUTTON START** The push-to-start button is protected by a water-resistant shield, so you're able to start up and head out should the weather outside accidentally come inside. Standard.
- 3. WASHABLE INTERIOR** Not only is the carpet weather-resistant, but it can be removed to reveal drain plugs that, when opened, allow the floor to be easily hosed out. Standard.
- 4. COMMAND CENTRE** It's all conveniently laid out and right at hand. Important functions and settings are arranged on the front dash and console, providing access via solid metal dials and firm buttons. Standard.
- 5. MORE POWER TO YOU** Connect to and power up your devices with the USB port, micro USB port, and 12-volt and audio jack situated on the front dashboard. An additional available 115-volt outlet and two USB ports are on the rear of the centre console, especially handy for device users in the second row.
- 6. AUXILIARY SWITCH GROUP** This bank of four switches, conveniently installed in the dashboard, is pre-wired from the factory to accept accessories like off-road lights and a winch, making their addition clean and hassle-free. Available.





**PHONE/TEXT**  
 Pair up to eight phones, make calls, use voice commands to hear and respond to texts,<sup>8</sup> select media stations and access navigation. Includes Apple CarPlay<sup>6</sup> support with your connected iPhone and Android Auto<sup>TM6</sup> compatibility. Standard.



**SIRIUSXM<sup>7</sup>**  
 Tune in and travel well. SiriusXM connects you with the ultimate entertainment experience, including over 150 channels of ad-free music, plus sports, news, talk and comedy. 1-year trial included. Standard.



**CONNECTIONS**  
 With Siri Eyes Free<sup>10</sup> and your connected iPhone, use voice commands to make calls, create and send texts,<sup>8</sup> and more. Available GPS Navigation<sup>11</sup> helps you travel the best routes. A standard Wi-Fi Hotspot<sup>12</sup> connects with up to eight devices within 15 metres (50 feet) of your vehicle.

**SIRIUSXM TRAFFIC PLUS<sup>6</sup>**  
 Avoid tie-ups, road closures and construction with continuous traffic updates. First five years of service included. Available.



**UCONNECT<sup>®</sup> + SIRIUSXM GUARDIAN<sup>5</sup>**  
 Enjoy a suite of safety and convenience features, including SOS Call,<sup>14</sup> lock/unlock or start<sup>15</sup> your car from almost anywhere, and much more. 1-year trial included. Standard.



**A LOT TO CONNECT WITH**  
 The Uconnect<sup>®</sup> system is your customizable, connected vehicle platform dedicated to safe and seamless communication, navigation and entertainment — all from one easy-to-use touchscreen. You're always connected with Uconnect, whether in your vehicle or via the Uconnect App<sup>5</sup> on your device, which allows you to lock and unlock your vehicle remotely.

**SIRIUSXM TRAVEL LINK<sup>6</sup>**  
 Get weather maps, forecasts and alerts, plus sports scores and schedules, fuel prices and more. First five years of service included. Available.



**START YOUR CAR FROM AFAR**  
 Start the engine, lock the doors, check fuel status and more using the available Jeep<sup>®</sup> Skill<sup>21</sup> for Amazon Alexa<sup>13</sup> or the available Jeep Action on a Google Assistant-enabled device.



LEARN MORE ABOUT UCONNECT AND RELATED SERVICES AT [DRIVEUCONNECT.CA](http://DRIVEUCONNECT.CA)



## ADVANCED SAFETY & SECURITY SYSTEMS

WHEN IT COMES TO YOUR WELL-BEING ON THE ROAD, JEEP® GLADIATOR IS READY AND WILLING TO STAND AS A CONSTANT GUARDIAN. GLADIATOR ENVELOPS YOU WITH MORE THAN 80 STANDARD AND AVAILABLE SAFETY & SECURITY FEATURES. SENSORS AND CAMERAS KEEP WATCH AROUND YOUR PERIMETER FOR COMPLETE PEACE OF MIND.



### BLIND-SPOT MONITORING<sup>3</sup> AND REAR CROSS-PATH DETECTION<sup>3</sup>

Maintain a safe perimeter with the help of these sensor systems. Chimes and illuminated icons notify you when side or rear blind spots are encroached. Available.



### ADAPTIVE CRUISE CONTROL WITH STOP<sup>3</sup>

The system automatically adjusts cruising speed to maintain a preset distance between you and the vehicle ahead and can bring Gladiator to a complete stop without driver intervention to help avoid a collision. Available.

### ULTRASONIC AND ANTI-TILT SECURITY SYSTEM

The alarm is activated by virtually any unauthorized movement, such as wheel removal or towing; illegal opening of a door, hood or swing gate; ignition start; cutting of battery leads; or motion inside the cabin. Available.



### PARK-SENSE® REAR PARK ASSIST SYSTEM<sup>3</sup>

Works in tandem with the ParkView® Rear Back-Up Camera<sup>3</sup> to help display previously hidden objects, bringing them to your attention on-screen and with an audible warning so you have time to react. At speeds below 6 km/h (4 mph), the system will automatically bring the vehicle to a stop if an object is detected. Available.

### TRAILER SWAY DAMPING (TSD)

When you're towing valuable toys, it's critical to help keep things under control. TSD helps improve handling should crosswinds or traffic become challenging. The system continuously monitors vehicle movement and adjusts brake pressure to individual wheels until you're moving safely forward once again. Standard.

### FULL-SPEED FORWARD COLLISION WARNING PLUS<sup>3</sup>

Uses radar and sensors to video-detect when you may be approaching another vehicle too rapidly. An audible and visual alert is given or the system assists the driver in mitigating a potential collision. Available.

### ELECTRONIC STABILITY CONTROL (ESC)<sup>16</sup>

A vehicle-wide network of safety sensors helps maintain vehicle control, providing instant aid should it detect you're veering off your intended path. ESC<sup>16</sup> coordinates Electronic Roll Mitigation (ERM), Antilock Brake System (ABS), Traction Control and Trailer Sway Damping (TSD), sending them into action when needed. Standard.

### FORWARD-FACING OFF-ROAD TRAILCAM<sup>3</sup> CAMERA

This front-mounted camera gives you a close-up view of the trail directly in front of Gladiator so you can spot challenging objects in time to outmanoeuvre them. A "Clean Camera" button on the touchscreen helps you keep the lens free of dirt. Available on Mojave and Rubicon®.



# TWO HEARTS, ONE SOUL



## 3.0L ECODIESEL V6 ENGINE

The available 3.0L EcoDiesel V6 engine provides impressive power, performance and towing capability to take on off-road and on-road challenges as you take on new adventures. It offers 260 horsepower and 442 lb-ft of torque for impressive performance and outstanding low-end strength, so now you can take your crew and your gear on-road and off-road with confidence.



**260** HORSEPOWER

**442** LB-FT OF TORQUE

FUEL ECONOMY  
AS EFFICIENT AS

**10.8 (26)/  
8.5 (33)**

CITY/HWY L/100 KM (MPG)<sup>17</sup>

## 3.6L PENTASTAR™ V6 ENGINE

This award-winning engine is designed to deliver powerful pull with welcome efficiency. Economies are realized via enhancements, including a two-step Variable Valve Lift System specifically designed to remain predominantly in low-lift mode until more power is demanded, when it will quickly move into high-lift mode for improved combustion. Its cooled exhaust-gas recirculation and innovative weight-reduction strategies also aid efficiencies and power output while maintaining the smooth performance that's a recognized hallmark of the Pentastar™ engine. Standard.



**285** HORSEPOWER

**260** LB-FT OF TORQUE

FUEL ECONOMY  
AS EFFICIENT AS

**14.3 (20)/  
10.4 (27)**

CITY/HWY L/100 KM (MPG)<sup>17</sup>



## 8-SPEED AUTOMATIC TRANSMISSION

The launch ratios for all eight gears have been optimized, tuning this 8-speed transmission to the exact structure, size and weight of your Jeep® Gladiator. Advanced software adjusts performance on the fly, based on variables such as temperature, cornering, hill grades, 4x4 gears and towing. Smooth and virtually seamless shifts, both up and down, deliver a consistently smooth ride. Available.



## 6-SPEED MANUAL TRANSMISSION

For those who prefer to really put themselves into every shift, this one's for you. It hands you low 1st and Reverse gears, which are great for off-roading. It comes standard, matched to either a Command-Trac® 4x4 system on Sport S, Overland® and Mojave or paired with the Rock-Trac® 4x4 system on the Rubicon® model.



# PACKED FOR ACTION

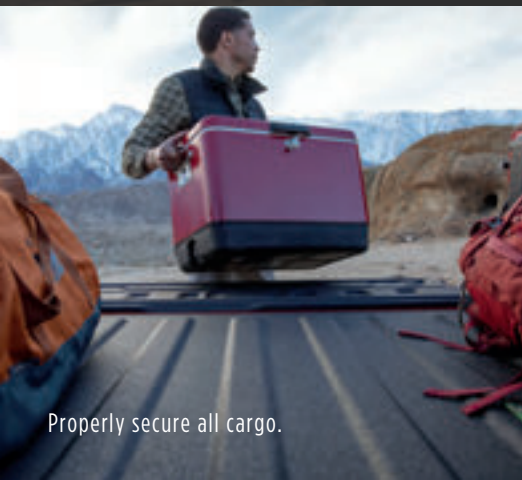


## THREE-POSITION, SOFT-OPEN TAILGATE

The standard lightweight aluminum tailgate is damped for safe and smooth opening and closing. It can be set in three different positions, allowing you to securely transport items of various sizes, including 4 x 8-foot sheet goods.

## ROLL-UP TONNEAU COVER

Keep the valuables stored in your truck bed covered and protected. Made of extremely durable, water-resistant material, this cover rolls out from the cab and secures at the tailgate. You can flip back the last section to allow loading of longer items while keeping the rest of the tonneau and tailgate closed and secure. Durable straps secure the tonneau in its rolled position. Available.



## SPRAY-IN BEDLINER

This durable and attractive liner is available from the factory, helping to protect the cargo bed from whatever you throw at it. Available.

Properly secure all cargo.



## CARGO MANAGEMENT GROUP WITH TRAIL RAIL™ SYSTEM

Keep cargo organized, secure and easily at hand. Three embedded rails with adjustable tie-down sliders run along the inside of the truck bed and behind the cab. This Group also includes a 240-amp alternator, lockable rear underseat storage, exterior 115-volt AC outlet and 400-watt inverter. Available.



## MORE THAN TOUGH ENOUGH

A traditional steel bed utilizes steel crossmembers to reinforce the load floor while the aluminum tailgate is damped. Utility and versatility are maximized with strong, integrated tie-downs, LED bed lighting and an optional, covered external 115-volt power source.

### LOCKABLE REAR UNDERSEAT STORAGE BIN

Hidden under the rear seat, this lockable and removable box offers out-of-sight storage for plenty of gear. It includes two independently locking doors, movable dividers and a carry handle. Available.



# LOAD IT UP LOCK IT DOWN

### HARDWARE STORAGE

There's even a covered compartment under the rear seat to securely hold the bolts from the top, doors and windshield!

# BRING IT ALL

**FLEXIBLE REAR SEATING** The 60/40 split-folding rear seat can be configured multiple ways. Both seatbacks can be folded down independently, or the seat bottoms can flip up. Standard.

**LOCKABLE BEHIND-SEAT STORAGE** The rear seatbacks can be locked upright using the vehicle key, providing secure and illuminated storage behind the seat, especially helpful when the top is off and the doors are removed! Standard.

**LOCKABLE GLOVE BOX AND CENTRE CONSOLE** These locking compartments are large and provide essential peace of mind. Standard.

**BINS AND POCKETS** The cabin is designed to help you stay organized with cubbies, pockets and bins throughout, giving you plenty of places to store phones, computers, tablets, maps, gaming devices and more. The two-tiered centre console has a main bin big enough to fit an iPad and a convenient top tray for smaller gear. Cup holders are sized to hold larger beverage containers and have a dedicated slot for cell phone or key fob storage.

## BEST-IN-CLASS REAR-SEAT LEGROOM<sup>2</sup>

**MODULAR SEATBACK  
JEEP® UTILITY GRID  
SYSTEM** Built into the seatbacks of Mojave and Rubicon® are exclusive grids that support the addition of flexible storage. Strong nylon woven straps will accommodate available MOLLE-style bags. Standard on Mojave and Rubicon models.

Properly secure all cargo.

# MOJAVE®

## STANDARD

- 3.6L Pentastar™ V6 engine with 6-speed manual transmission and 4.10 axle ratio
- 5-foot steel box with 4 tie-downs and LED lights
- 115-volt auxiliary power outlet
- 400-watt inverter
- Command-Trac® Part-Time 4x4 System
- Tru-Lok® rear locking differential
- Larger, reinforced rear track bar\*
- Off-Road Plus Mode
- Protection sill rails
- Wider-track heavy-duty Dana® 44 axles\*
- Front axles with cast iron steering knuckles
- Reinforced frame\*
- 1-inch front suspension lift
- FOX® 2.5-inch internal bypass shocks with reservoirs
- FOX front hydraulic jounce bumpers
- Thicker front upper control arms\*
- Silver-painted skid plate for front suspension
- Skid plates for fuel tank and transfer case
- High-clearance front fender flares in Black
- Performance-style hood with Mojave decal
- 2 front and 2 rear tow hooks in Orange
- Desert Rated® badge
- Front bumper with Dark Grey appliqués
- Dark Grey grille inserts
- 17-inch aluminum painted Low-Gloss Black wheels
- 33-inch Falken® LT285/70R17C BSW A/T tires
- Full-size spare tire
- Cloth seats in Black with Mojave logo, Copperhead Orange accent stitching, Sport bolsters and Textured Ash dash mid-panel
- Modular Seatback Jeep® Utility Grid System
- Automatic halogen headlamps and manual fog lamps
- Sunrider® Soft Top in Black vinyl
- Deep-tint sunscreen windows
- Full-framed removable<sup>1</sup> doors
- Push-button start
- Remote Proximity Keyless Entry
- Power windows / locks
- Power, heated mirrors
- Power locking, damped 3-position tailgate
- Dual-Zone Automatic Temperature Control
- Competition leather-wrapped steering wheel
- Steering-wheel-mounted audio controls
- Tilt / telescoping steering column
- Lockable behind-seat storage
- Full centre console with locking storage
- TORX® toolkit for top / door removal<sup>1</sup>
- Wash-out interior with removable carpet, plus sound barrier and drain plugs
- Front and rear floor mats
- 4- and 7-pin trailer wiring harness
- Cruise control
- 7-inch full-colour Driver Information Display (DID)
- Uconnect® 4C NAV with 8.4-inch touchscreen
- GPS Navigation<sup>11</sup>
- HD radio
- SiriusXM Guardian<sup>5</sup> (1-year trial subscription)
- SiriusXM Traffic Plus<sup>6</sup> (5-year trial subscription), SiriusXM Travel Link<sup>6</sup> (5-year trial subscription) and Emergency / Assistance Call
- Alpine® Premium Audio System
- Auto-dimming rearview mirror
- Apple CarPlay<sup>9</sup> support
- Android Auto™<sup>9</sup> compatibility
- 7 USB ports
- ParkView® Rear Back-Up Camera<sup>3</sup>
- Electronic Stability Control (ESC)<sup>16</sup> and Trailer Sway Damping (TSD)
- Hill Start Assist (HSA) and Electronic Roll Mitigation (ERM)
- Advanced multistage driver and front-passenger air bags<sup>18</sup>
- SiriusXM<sup>7</sup> (1-year trial subscription)
- Supplemental front-seat-mounted side air bags<sup>18</sup>
- Tire Pressure Monitoring Display
- Selectable Tire-Fill Alert
- Sentry Key® anti-theft engine immobilizer
- Security alarm<sup>19</sup>
- Universal garage door opener<sup>20</sup>
- Rearview day / night mirror
- Sun visors with illuminated vanity mirrors

## AVAILABLE

- Selec-Trac® Active On-Demand Full-Time 4x4 System (requires automatic transmission)
- 17-inch aluminum polished and painted Low-Gloss Black wheels
- 33-inch Falken LT285/70R17C BSW M/T tires
- Forward-Facing Off-Road TrailCam<sup>3</sup> Camera
- Body-colour fender flares
- Leather-trimmed seats with Sport bolsters and embroidered Mojave logo, Copperhead Orange accent stitching and painted Textured Ash mid-panel
- Sunrider Flip Top for Hardtop
- Premium Black Sunrider Soft Top with upgraded fabric
- Soft top window storage bag
- Freedom Top® 3-piece Modular Hardtop, in Black or body-colour, with rear sliding window, defroster and Freedom Panel storage bag
- Hardtop headliner
- 8-speed automatic transmission, including Selec-Speed® Control and skid plate
- Wireless Bluetooth® speaker
- Roll-up tonneau cover
- Spray-in bedliner
- Remote Start System (requires automatic transmission)
- Mopar® All-Weather Slush Mats
- Jeep Trail Rated® Kit (tow strap, gloves, D-ring and storage bag)
- Corning® Gorilla® Glass windshield
- Mopar Sunrider Flip Top (restrictions apply)
- Mopar Doors-Off<sup>1</sup> Mirror Kit
- DUAL DOOR GROUP:** Your choice of base uppers, premium uppers or lowers only (requires Mopar Hard Tri-Fold Tonneau Cover, Mopar Soft Tri-Fold Tonneau Cover or roll-up tonneau cover; restrictions apply)
- DUAL TOP GROUP:** Freedom Top 3-piece Modular Hardtop, premium Black Sunrider Soft Top and Freedom Panel storage bag (requires Mopar Hard Tri-Fold Tonneau Cover, Mopar Soft Tri-Fold Tonneau Cover or roll-up tonneau cover)
- CARGO GROUP WITH TRAIL RAIL™ SYSTEM:** 240-amp alternator, lockable rear underseat storage bin, exterior 115-volt AC outlet and Trail Rail™ bed system
- TRAILER TOW PACKAGE:** 240-amp alternator, heavy-duty engine cooling, Class IV hitch receiver and trailer hitch zoom<sup>3</sup>



## INTERIORS

- 1) Ferndale Premium-embossed Cloth in Black with Sport bolsters and embroidered Mojave logo, Copperhead Orange accent stitching and painted Textured Ash mid-bolster (standard)
- 2) McKinley Leather-trimmed in Black with Sport bolsters and embroidered Mojave logo, Copperhead Orange accent stitching and painted Textured Ash mid-bolster (available)
- 3) McKinley Leather-trimmed in Steel Grey with Sport bolsters and embroidered Mojave logo, Copperhead Orange accent stitching and painted Textured Ash mid-bolster (available)

## WHEELS

- 1) 17-inch aluminum painted Low-Gloss Black (standard)
- 2) 17-inch aluminum polished and painted Low-Gloss Black (available)



Mojave in Sarge

\*Compared to other Jeep® Gladiator models.



## STANDARD

- 3.6L Pentastar™ V6 engine with 8-speed automatic transmission and 3.73 axle ratio
- 5-foot steel box with 4 tie-downs and LED lights with body-colour handle
- 115-volt auxiliary power outlet
- 400-watt inverter
- Command-Trac® Part-Time 4x4 System
- Heavy-duty wide-track Dana® 44 axles
- Skid plates for fuel tank and transfer case
- Tow hooks: 2 front and 1 rear
- Side steps
- Body-colour fender flares
- Body-colour front bumper with Gloss Black appliqué
- Body-colour door handles
- Body-colour rear bumper with step pad
- Sport suspension
- Sport front and rear shock absorbers
- Gloss Black grille inserts
- Freedom Top® 3-piece Modular Hardtop, in body-colour, with rear sliding window, defroster and Freedom Panel storage bag
- Deep-tint sunscreen windows
- Full-framed removable<sup>1</sup> doors
- 20-inch aluminum fully painted Gloss Black wheels
- 275/55R20 Bridgestone® A/S tires
- Full-size spare tire
- Power locking, damped 3-position tailgate
- Monaco-wrapped mid-bolster
- Front and rear floor mats
- Leather-wrapped steering wheel
- Tilt / telescoping steering column
- Power windows / locks
- Body-colour power, heated mirrors with supplemental turn signal indicators
- Sun visors with illuminated vanity mirrors
- Dual-Zone Automatic Temperature Control
- Push-button start
- Remote Proximity Keyless Entry
- 4- and 7-pin trailer wiring harness
- Steering-wheel-mounted audio controls
- Cruise control
- 7-inch full-colour Driver Information Display (DID)
- Uconnect® 4C NAV with 8.4-inch touchscreen and GPS Navigation<sup>11</sup>
- Wi-Fi Hotspot<sup>12</sup>
- SiriusXM Guardian<sup>5</sup> (1-year trial subscription)
- SiriusXM Traffic Plus<sup>6</sup> (5-year trial subscription), SiriusXM Travel Link<sup>6</sup> (5-year trial subscription) and Emergency / Assistance Call
- Apple CarPlay<sup>9</sup> support
- Android Auto™<sup>9</sup> compatibility
- SiriusXM<sup>7</sup> (1-year trial subscription)
- 552-watt, 9-speaker Alpine® Premium Audio System
- Lockable behind-seat storage
- ParkView® Rear Back-Up Camera<sup>3</sup>
- Electronic Stability Control (ESC)<sup>16</sup> and Trailer Sway Damping (TSD)
- Hill Start Assist (HSA) and Electronic Roll Mitigation (ERM)
- Advanced multistage driver and front-passenger air bags<sup>18</sup>
- Supplemental front-seat-mounted side air bags<sup>18</sup>
- Tire Pressure Monitoring Display
- Selectable Tire-Fill Alert
- Sentry Key® anti-theft engine immobilizer
- Security alarm<sup>19</sup>
- 7 USB ports
- Universal garage door opener<sup>20</sup>
- Full centre console with locking storage
- Auto-dimming rearview mirror

- TORX® toolkit for top / door removal
  - Wash-out interior with removable carpet, plus sound barrier and drain plugs
  - Heated steering wheel and heated front seats
  - Remote Start System
- LED LIGHTING GROUP:** LED daytime running lamps (DRLs), headlamps, taillamps and fog lamps
- SAFETY GROUP:** Blind-Spot Monitoring<sup>3</sup> and Rear Cross-Path Detection<sup>3</sup>; Park-Sense® Rear Park Assist System<sup>3</sup> and LED taillamps

## AVAILABLE

- 3.0L EcoDiesel V6 engine with 8-speed automatic transmission and 3.73 axle ratio
- Selec-Trac® Active On-Demand Full-Time 4x4 System
- Soft top window storage bag
- Hardtop headliner
- Forward-Facing Off-Road TrailCam<sup>3</sup> Camera
- Trac-Lok® limited-slip differential (restrictions apply; included with 3.0L EcoDiesel V6 engine)
- Wireless Bluetooth® speaker
- Roll-up tonneau cover
- Spray-in bedliner
- Mopar® All-Weather Slush Mats
- Jeep® Trail Rated® Kit (tow strap, gloves, D-ring and storage bag)
- Corning® Gorilla® Glass windshield
- Mopar Sunrider® Flip Top (restrictions apply)
- Mopar Doors-Off<sup>1</sup> Mirror Kit

**DUAL DOOR GROUP:** Your choice of premium uppers or lowers only (requires Mopar Hard Tri-Fold Tonneau Cover, Mopar Soft Tri-Fold Tonneau Cover or roll-up tonneau cover; restrictions apply)

**DUAL TOP GROUP:** Freedom Top 3-piece Modular Hardtop, premium Black Sunrider Soft Top and Freedom Panel storage bag

**CARGO GROUP WITH TRAIL RAIL™ SYSTEM:** 240-amp alternator, lockable rear underseat storage bin, exterior 115-volt AC outlet, Trail Rail™ bed system and 400-watt inverter

**TRAILER TOW PACKAGE:** 240-amp alternator, heavy-duty engine cooling, Class IV hitch receiver and trailer hitch zoom<sup>3</sup>

**AUXILIARY SWITCH GROUP:** 240-amp alternator, 700-amp maintenance-free battery and 4 programmable auxiliary switches

**ADVANCED SAFETY GROUP:** Auto High-Beam Headlamp Control, Full-Speed Forward Collision Warning Plus<sup>3</sup> and Adaptive Cruise Control with Stop<sup>3</sup>

**SMOKER'S GROUP:** Removable ashtray and cigar lighter

## INTERIORS

- 1) Nappa Leather-trimmed in Black with unique quilting on seatback and seat cushion inner bolsters, Caramel accent stitching and Monaco-wrapped mid-bolster in Black (standard)
- 2) Nappa Leather-trimmed in Steel Grey with unique quilting on seatback and seat cushion inner bolsters, Caramel accent stitching and Monaco-wrapped mid-bolster in Steel Grey (standard)

## WHEEL

- 1) 20-inch aluminum fully painted Gloss Black (standard)



High Altitude in Black

# RUBICON®

## STANDARD

- 3.6L Pentastar™ V6 engine with 6-speed manual transmission and 4.10 axle ratio
- 5-foot steel box with 4 tie-downs and LED lights
- 115-volt auxiliary power outlet
- 400-watt inverter
- Rock-Trac® Part-Time 4x4 System
- Tru-Lok® front / rear locking differentials
- Off-Road Plus Mode
- Front sway bar disconnect system
- Heavy-duty wide-track Dana® 44 axles
- 4.10:1 axle ratio
- 4:1 low-range transfer case
- Skid plates for fuel tank and transfer case
- Performance suspension with FOX® 2.0 monotube shocks
- High-clearance fender flares in Black
- Rock rails for cab and bed
- Dual vented hood with Rubicon® decal
- 2 front and 2 rear tow hooks in Red
- Front bumper with Dark Grey appliqué
- Dark Grey grille inserts
- 17-inch aluminum polished and painted Granite Crystal wheels
- 33-inch Falken® LT285/70R17C BSW A/T tires
- Full-size spare tire
- Cloth seats in Black with Rubicon logo, Red accent stitching and Redical dash mid-panel
- Modular Seatback Jeep® Utility Grid System
- Automatic halogen headlamps and manual fog lamps
- Sunrider® Soft Top in Black vinyl
- Deep-tint sunscreen windows
- Full-framed removable<sup>1</sup> doors
- Push-button start
- Remote Proximity Keyless Entry
- Power windows / locks
- Power, heated mirrors
- Power locking, damped 3-position tailgate
- Dual-Zone Automatic Temperature Control
- Leather-wrapped steering wheel
- Steering-wheel-mounted audio controls
- Tilt / telescoping steering column
- Lockable behind-seat storage
- Full centre console with locking storage
- TORX® toolkit for top / door removal<sup>1</sup>
- Wash-out interior with removable carpet, plus sound barrier and drain plugs
- Front and rear floor mats
- 4- and 7-pin trailer wiring harness
- Cruise control
- 7-inch full-colour Driver Information Display (DID)
- Uconnect® 4C NAV with 8.4-inch touchscreen
- GPS Navigation<sup>11</sup>
- Apple CarPlay<sup>9</sup> support
- Android Auto™<sup>9</sup> compatibility
- Wi-Fi Hotspot<sup>12</sup>
- HD radio
- SiriusXM Guardian<sup>5</sup> (1-year trial subscription)
- SiriusXM Traffic Plus<sup>6</sup> (5-year trial subscription), SiriusXM Travel Link<sup>6</sup> (5-year trial subscription) and Emergency / Assistance Call
- Alpine® Premium Audio System
- Auto-dimming rearview mirror
- 7 USB ports
- ParkView® Rear Back-Up Camera<sup>3</sup>
- Electronic Stability Control (ESC)<sup>16</sup> and Trailer Sway Damping (TSD)
- Hill Start Assist (HSA) and Electronic Roll Mitigation (ERM)
- Advanced multistage driver and front-passenger air bags<sup>18</sup>
- SiriusXM<sup>7</sup> (1-year trial subscription)
- Supplemental front-seat-mounted side air bags<sup>18</sup>
- Tire Pressure Monitoring Display
- Selectable Tire-Fill Alert
- Sentry Key® anti-theft engine immobilizer
- Security alarm<sup>19</sup>
- Universal garage door opener<sup>20</sup>
- Sun visors with illuminated vanity mirrors

## AVAILABLE

- 3.0L EcoDiesel V6 engine with 8-speed automatic transmission and 3.73 axle ratio
- Rock-Trac Active On-Demand Full-Time 4x4 System (requires automatic transmission)
- 17-inch aluminum polished and painted Mid-Gloss Black wheels
- 33-inch Falken LT285/70R17C BSW M/T tires
- Forward-Facing Off-Road TrailCam<sup>2</sup> Camera
- Body-colour fender flares
- Leather-trimmed seats with accent stitching
- Premium Black Sunrider Soft Top with upgraded fabric
- Soft top window storage bag
- Freedom Top® 3-piece Modular Hardtop, in Black or body-colour, with rear sliding window, defroster and Freedom Panel storage bag
- Hardtop headliner
- 8-speed automatic transmission, including Selec-Speed® Control and skid plate
- Wireless Bluetooth® speaker
- Roll-up tonneau cover
- Spray-in bedliner
- Remote Start System (requires automatic transmission)
- Mopar® All-Weather Slush Mats
- Jeep Trail Rated® Kit (tow strap, gloves, D-ring and storage bag)
- Corning® Gorilla® Glass windshield
- Mopar Sunrider Flip Top (restrictions apply)
- Mopar Doors-Off<sup>®</sup> Mirror Kit
- DUAL DOOR GROUP:** Your choice of base uppers, premium uppers or lowers only (requires Mopar Hard Tri-Fold Tonneau Cover, Mopar Soft Tri-Fold Tonneau Cover or roll-up tonneau cover; restrictions apply)
- DUAL TOP GROUP:** Freedom Top 3-piece Modular Hardtop, premium Black Sunrider Soft Top and Freedom Panel storage bag (requires Mopar Hard Tri-Fold Tonneau Cover, Mopar Soft Tri-Fold Tonneau Cover or roll-up tonneau cover)
- STEEL FRONT BUMPER:** Winch-capable bumper with integrated fog lamps and removable end caps (requires LED Lighting Group)

**CARGO GROUP WITH TRAIL RAIL™ SYSTEM:** 240-amp alternator, lockable rear underseat storage bin, exterior 115-volt AC outlet and Trail Rail™ bed system

**TRAILER TOW PACKAGE:** 240-amp alternator, heavy-duty engine cooling, Class IV hitch receiver and trailer hitch zoom<sup>3</sup>

**COLD WEATHER GROUP:** Heated steering wheel, heated front seats and Remote Start System (when equipped with automatic transmission)

**AUXILIARY SWITCH GROUP:** 240-amp alternator, 700-amp battery and 4 programmable auxiliary switches

**SAFETY GROUP:** Blind-Spot Monitoring<sup>3</sup> and Rear Cross-Path Detection<sup>3</sup>; Park-Sense<sup>®</sup> Rear Park Assist System<sup>3</sup> and LED taillamps

**ADVANCED SAFETY GROUP:** Auto High-Beam Headlamp Control, Full-Speed Forward Collision Warning Plus<sup>3</sup> and Adaptive Cruise Control with Stop<sup>3</sup> (requires Safety Group; restrictions apply)

**LED LIGHTING GROUP:** LED daytime running lamps (DRLs), headlamps, taillamps and fog lamps

**SMOKER'S GROUP:** Removable ashtray and cigar lighter



## INTERIORS

- 1) Madox-embossed Cloth in Black with embroidered Rubicon logo, Rubicon Red accent stitching and painted Redical mid-bolster (standard)
- 2) McKinley Leather-trimmed in Black with embroidered Rubicon logo, Rubicon Red accent stitching and painted Redical mid-bolster (available)
- 3) McKinley Leather-trimmed in Dark Saddle with embroidered Rubicon logo, Light Tungsten accent stitching and painted Silver Platinum mid-bolster (available)

## WHEELS

- 1) 17-inch aluminum polished and painted Granite Crystal (standard)
- 2) 17-inch aluminum polished and painted Mid-Gloss Black (available)



Rubicon® in Bright White



## STANDARD

- 3.6L Pentastar™ V6 engine with 6-speed manual transmission and 3.73 axle ratio
- 5-foot steel box with 4 tie-downs and LED lights
- 115-volt auxiliary power outlet
- 400-watt inverter
- Command-Trac® Part-Time 4x4 System
- Heavy-duty wide-track Dana® 44 axles
- Skid plates for fuel tank and transfer case
- Tow hooks: 2 front and 1 rear
- Automatic halogen headlamps and manual fog lamps
- Side steps
- Body-colour fender flares
- Front bumper with Silver appliques
- Silver grille inserts
- Overland® badge
- Freedom Top® 3-piece Modular Hardtop, in Black, with rear sliding window, defroster and Freedom Panel storage bag
- Deep-tint sunscreen windows
- Full-framed removable<sup>1</sup> doors
- 18-inch aluminum polished and painted Granite Crystal wheels
- 255/70R18 Bridgestone® Dueler, A/S tires
- Full-size spare tire
- Power locking, damped 3-position tailgate
- Cloth seats with Overland logo
- Grillz-dash mid-panel
- Front and rear floor mats
- Leather-wrapped steering wheel
- Tilt / telescoping steering column
- Power windows / locks
- Power, heated mirrors
- Sun visors with illuminated vanity mirrors
- Dual-Zone Automatic Temperature Control
- Push-button start
- Remote Proximity Keyless Entry
- 4- and 7-pin trailer wiring harness
- Steering-wheel-mounted audio controls
- Cruise control
- 7-inch full-colour Driver Information Display (DID)
- Uconnect® 4C NAV with 8.4-inch touchscreen
- GPS Navigation<sup>11</sup>
- Apple CarPlay<sup>9</sup> support
- Android Auto™<sup>9</sup> compatibility
- Wi-Fi Hotspot<sup>12</sup>
- HD radio
- SiriusXM Guardian<sup>5</sup> (1-year trial subscription)
- SiriusXM Traffic Plus<sup>6</sup> (5-year trial subscription)
- SiriusXM Travel Link<sup>6</sup> (5-year trial subscription) and Emergency / Assistance Call
- Alpine® Premium Audio System
- Auto-dimming rearview mirror
- SiriusXM<sup>7</sup> (1-year trial subscription)
- Lockable behind-seat storage
- ParkView® Rear Back-Up Camera<sup>3</sup>
- Electronic Stability Control (ESC)<sup>16</sup> and Trailer Sway Damping (TSD)
- Hill Start Assist (HSA) and Electronic Roll Mitigation (ERM)
- Advanced multistage driver and front-passenger air bags<sup>18</sup>
- Supplemental front-seat-mounted side air bags<sup>18</sup>
- Tire Pressure Monitoring Display
- Selectable Tire-Fill Alert
- Sentry Key® anti-theft engine immobilizer
- Security alarm<sup>19</sup>
- 7 USB ports
- Universal garage door opener<sup>20</sup>
- Full centre console with locking storage
- TORX® toolkit for top / door removal<sup>1</sup>
- Wash-out interior with removable carpet, plus sound barrier and drain plugs

## AVAILABLE

- 3.0L EcoDiesel V6 engine with 8-speed automatic transmission and 3.73 axle ratio
- Selec-Trac® Active On-Demand Full-Time 4x4 System (requires automatic transmission)

- Leather-trimmed seats with embroidered Overland logo (includes rear armrest with cup holder, premium door trim, leather-wrapped shift knob and Monaco-wrapped dash mid-panel)
- Freedom Top 3-piece Modular Hardtop, in body-colour, with rear sliding window, defroster and Freedom Panel storage bag
- Hardtop headliner
- 8-speed automatic transmission, including Selec-Speed® Control and skid plate
- Forward-Facing Off-Road TrailCam<sup>3</sup> Camera
- Trac-Lok® limited-slip differential (restrictions apply; included with 3.0L EcoDiesel V6 engine)
- Wireless Bluetooth® speaker
- Roll-up tonneau cover
- Spray-in bedliner
- Remote Start System (requires automatic transmission)
- Mopar® All-Weather Slush Mats
- Jeep® Trail Rated® Kit (tow strap, gloves, D-ring and storage bag)
- Corning® Gorilla® Glass windshield
- Mopar Sunrider® Flip Top (restrictions apply)
- Mopar Doors-Off<sup>1</sup> Mirror Kit

**DUAL DOOR GROUP:** Your choice of premium uppers or lowers only (requires Mopar Hard Tri-Fold Tonneau Cover, Mopar Soft Tri-Fold Tonneau Cover or roll-up tonneau cover; restrictions apply)

**DUAL TOP GROUP:** Freedom Top 3-piece Modular Hardtop, premium Black Sunrider Soft Top and Freedom Panel storage bag (requires Mopar Hard Tri-Fold Tonneau Cover, Mopar Soft Tri-Fold Tonneau Cover or roll-up tonneau cover)

**CARGO GROUP WITH TRAIL RAIL™ SYSTEM:** 240-amp alternator, lockable rear underseat storage bin, exterior 115-volt AC outlet, Trail Rail™ bed system and 400-watt inverter

**TRAILER TOW PACKAGE:** 240-amp alternator, heavy-duty engine cooling, Class IV hitch receiver and trailer hitch zoom<sup>3</sup>

**COLD WEATHER GROUP:** Heated steering wheel, heated front seats and Remote Start System (when equipped with automatic transmission)

**AUXILIARY SWITCH GROUP:** 240-amp alternator, 700-amp maintenance-free battery and 4 programmable auxiliary switches

**SAFETY GROUP:** Blind-Spot Monitoring<sup>3</sup> and Rear Cross-Path Detection<sup>3</sup>; Park-Sense® Rear Park Assist System<sup>3</sup> and LED taillamps

**ADVANCED SAFETY GROUP:** Auto High-Beam Headlamp Control, Full-Speed Forward Collision Warning Plus<sup>3</sup> and Adaptive Cruise Control with Stop<sup>3</sup> (requires Safety Group; restrictions apply)

**LED LIGHTING GROUP:** LED daytime running lamps (DRLs), headlamps, taillamps and fog lamps

**SMOKER'S GROUP:** Removable ashtray and cigar lighter

## INTERIORS

- 1) Soulmate Cloth with Peak embossment in Black with tonal stitching and Grillz-painted mid-bolster (standard)
- 2) Soulmate Cloth with Peak embossment in Heritage Tan with tonal stitching and Grillz-painted mid-bolster (standard)
- 3) McKinley Leather-trimmed in Black with embroidered Overland logo, Light Tungsten accent stitching and Monaco-wrapped mid-bolster (available)
- 4) McKinley Leather-trimmed in Dark Saddle with embroidered Overland logo, Light Tungsten accent stitching and Monaco-wrapped mid-bolster (available)



## WHEEL

- 1) 18-inch aluminum polished and painted Granite Crystal (standard)



Overland® in Silver Zynith

# SPORT

## STANDARD / SPORT S

- 3.6L Pentastar™ V6 engine with 6-speed manual transmission and 3.73 axle ratio
- 5-foot steel box with 4 tie-downs and LED lights
- Command-Trac® Part-Time 4x4 System
- Heavy-duty wide-track Dana® 44 axles
- Skid plates for fuel tank and transfer case
- Tow hooks: 2 front and 1 rear
- Automatic halogen headlamps and fog lamps
- Sunrider® Soft Top in Black vinyl
- Full-framed removable<sup>1</sup> doors
- 245/75R17 Bridgestone® H/T tires
- Full-size spare tire
- Damped 3-position tailgate
- Cloth seating with Silver Platinum dash mid-panel
- Tilt / telescoping steering column
- Front and rear floor mats
- Power windows / locks
- Air conditioning
- Push-button start
- 4- and 7-pin trailer wiring harness
- Steering-wheel-mounted audio controls
- Cruise control
- 3.5-inch monotone Driver Information Display (DID)
- Uconnect® 4 with 7-inch full-colour touchscreen, AM / FM radio, Bluetooth®, Integrated Voice Command and hands-free<sup>8</sup> calling with Media Hub (USB, AUX)
- SiriusXM Guardian<sup>5</sup> (1-year trial subscription)
- Wi-Fi Hotspot<sup>12</sup>
- 8-speaker sound system with overhead sound bar
- Lockable behind-seat storage
- Apple CarPlay<sup>3</sup> support
- Android Auto™<sup>9</sup> compatibility
- ParkView® Rear Back-Up Camera<sup>3</sup>
- Electronic Stability Control (ESC)<sup>16</sup> and Trailer Sway Damping (TSD)
- Hill Start Assist (HSA) and Electronic Roll Mitigation (ERM)
- Advanced multistage driver and front-passenger air bags<sup>18</sup>
- Supplemental front-seat-mounted side air bags<sup>18</sup>
- Tire Pressure Monitoring Display
- Selectable Tire-Fill Alert
- Sentry Key® anti-theft engine immobilizer

- 3 USB ports
- Full centre console with locking storage
- Rearview day / night mirror
- TORX® toolkit for top / door removal<sup>1</sup>
- Wash-out interior with removable carpet, plus sound barrier and drain plugs
- 17-inch aluminum painted Tech Silver Metallic wheels
- Body-colour fender flares
- Leather-wrapped steering wheel
- Power windows / locks
- Power, heated mirrors
- Power locking tailgate
- Deep-tint sunscreen windows
- Security alarm<sup>19</sup>
- Sun visors with illuminated vanity mirrors
- Remote keyless entry

## AVAILABLE

- Tubular side steps
- Selec-Trac® Active On-Demand Full-Time 4x4 System (requires automatic transmission)
- Premium Black Sunrider Soft Top with upgraded fabric
- Wireless Bluetooth speaker (requires Alpine® Premium Audio System)
- Hardtop headliner
- 552-watt, 9-speaker Alpine Premium Audio System
- Corning® Gorilla® Glass windshield
- 3.0L EcoDiesel V6 engine with 8-speed automatic transmission and 3.73 axle ratio
- 8-speed automatic transmission, including Selec-Speed® Control and skid plate
- Trac-Lok® limited-slip differential (included with 3.0L EcoDiesel V6 engine and Max Tow Package with 4.10 Axle Ratio)
- Freedom Top® 3-piece Modular Hardtop in Black with rear sliding window, rear defroster and Freedom Panel storage bag
- Soft top window storage bag
- Roll-up tonneau cover
- Spray-in bedliner
- Trailer Brake Control (restrictions apply)
- Mopar® All-Weather Slush Mats

- Jeep® Trail Rated® Kit (tow strap, gloves, D-ring and storage bag)
- Mopar Sunrider Flip Top (restrictions apply)
- Mopar Doors-Off<sup>1</sup> Mirror Kit

**DUAL TOP GROUP:** Freedom Top 3-piece Modular Hardtop, premium Black Sunrider Soft Top and Freedom Panel storage bag (requires Mopar Hard Tri-Fold Tonneau Cover, Mopar Soft Tri-Fold Tonneau Cover or roll-up tonneau cover)

**CARGO GROUP WITH TRAIL RAIL™ SYSTEM:** 240-amp alternator, lockable rear underseat storage bin, exterior 115-volt AC outlet, Trail Rail™ bed system and 400-watt inverter

**CONVENIENCE GROUP:** Universal garage door opener<sup>20</sup> and Remote Start System (when equipped with automatic transmission)

**TECHNOLOGY GROUP:** Dual-Zone Automatic Temperature Control, Remote Proximity Keyless Entry, SiriusXM<sup>7</sup> (1-year trial subscription) and 7-inch full-colour Driver Information Display (requires Convenience Group)

**COLD WEATHER GROUP:** Heated steering wheel, heated front seats and Remote Start System (when equipped with automatic transmission)

**SAFETY GROUP:** LED taillamps, Park-Sense® Rear Park Assist System<sup>3</sup> and Blind-Spot Monitoring<sup>3</sup> and Rear Cross-Path Detection<sup>3</sup>

**ADVANCED SAFETY GROUP:** Auto High-Beam Headlamp Control, Full-Speed Forward Collision Warning Plus<sup>3</sup> and Adaptive Cruise Control with Stop<sup>3</sup> (requires Safety Group; restrictions apply)

**LED HEADLAMP AND FOG LAMP GROUP:** LED daytime running lamps (DRLs), headlamps and fog lamps

**DUAL DOOR GROUP:** Your choice of base uppers, premium uppers or lowers only (includes power, heated mirrors, remote keyless entry, power windows with 1-touch down and speed-sensitive power locks; requires Mopar Hard Tri-Fold Tonneau Cover, Mopar Soft Tri-Fold Tonneau Cover or roll-up tonneau cover; restrictions apply)

**TRAILER TOW PACKAGE:** 240-amp alternator, heavy-duty engine cooling, Class IV hitch receiver and trailer hitch zoom<sup>3</sup> (not available with Max Tow Package with 4.10 Axle Ratio)

**MAX TOW PACKAGE WITH 4.10 AXLE RATIO:** 240-amp alternator, wide-track Dana 44 axles, 4.10:1 axle ratio, heavy-duty engine cooling, Class IV hitch receiver, Trac-Lok limited-slip differential, A/T tires, wide fender flares, trailer hitch zoom<sup>3</sup> and a Gross Vehicle Weight Rating of 2,835 kg (6,250 lb) (requires automatic transmission)

**AUXILIARY SWITCH GROUP:** 240-amp alternator, 700-amp maintenance-free battery and 4 programmable auxiliary switches

**SMOKER'S GROUP:** Removable ashtray and cigar lighter

**UCONNECT® 4C NAV & SOUND GROUP:** Uconnect 4C NAV with 8.4-inch touchscreen, GPS Navigation<sup>11</sup>, Bluetooth, Apple CarPlay<sup>3</sup> support, Android Auto<sup>9</sup> compatibility, Siri Eyes Free<sup>10</sup>, AM / FM radio, HD radio, SiriusXM Guardian<sup>5</sup> (1-year trial subscription), SiriusXM Traffic Plus<sup>6</sup> (5-year trial subscription), SiriusXM Travel Link<sup>6</sup> (5-year trial subscription), Emergency / Assistance Call, Alpine Premium Audio System and auto-dimming rearview mirror

**SPORT ALTITUDE (late availability)**  
*INCLUDES SPORT S CONTENT PLUS:*

- 17-inch Gloss Black aluminum wheels
- Black 3-piece hardtop, grille and fog lamp bezels
- Trailer Tow Package
- All-Black interior with cloth bucket seats
- Gloss Black instrument-panel bezels
- Heated front seats and heated leather-wrapped steering wheel
- 7-inch in-cluster display centre
- Automatic Temperature Control
- Remote Start System (when equipped with automatic transmission)
- Universal garage door opener<sup>20</sup>
- Remote Proximity Keyless Entry
- SiriusXM<sup>7</sup> (1-year trial subscription)

## INTERIORS

- 1) Soulmate Cloth with Peak embossment in Black with tonal stitching and Silver Platinum-painted mid-bolster (standard)
- 2) Soulmate Cloth with Peak embossment in Heritage Tan with tonal stitching and Silver Platinum-painted mid-bolster (standard)

## WHEELS

- 1) 17-inch aluminum painted Tech Silver Metallic (standard on Sport S)
- 2) 17-inch Gloss Black aluminum (standard on Sport Altitude)



Sport S in Firecracker Red





## STANDARD / WILLYS SPORT S

- 3.6L Pentastar™ V6 engine with 6-speed manual transmission and 3.73 axle ratio
- 5-foot steel box with 4 tie-downs and LED lights
- Command-Trac® Part-Time 4x4 System
- Heavy-duty Dana® 44 axles
- Skid plates for fuel tank and transfer case
- Heavy-duty front and rear Red-painted shocks
- Trac-Lok® limited-slip rear differential
- Heavy-duty rock rails
- Tow hooks: 2 front and 1 rear
- Willys hood decal
- 17-inch Mid-Gloss Black Rubicon® aluminum wheels
- 32-inch Bridgestone® OWL On- / Off-Road tires
- Gloss Black grille
- “4-Wheel Drive” tailgate decal
- Black fog lamp bezels
- Black Trail Rated® badges
- Automatic halogen headlamps and fog lamps
- Sunrider® Soft Top in Black vinyl
- Full-framed removable<sup>1</sup> doors
- Full-size spare tire
- Damped 3-position tailgate
- Deep-tint sunscreen windows
- Cloth seating with Silver Platinum dash mid-panel
- Tilt / telescoping steering column
- Mopar® All-Weather Slush Mats
- Power windows / locks
- Air conditioning
- Push-button start
- 4- and 7-pin trailer wiring harness
- Steering-wheel-mounted audio controls
- Cruise control
- 3.5-inch monotone Driver Information Display (DID)
- Uconnect® 4 with 7-inch full-colour touchscreen, AM / FM radio, Bluetooth®, Integrated Voice Command and hands-free<sup>8</sup> calling with Media Hub (USB, AUX)
- SiriusXM Guardian<sup>5</sup> (1-year trial subscription)
- Wi-Fi Hotspot<sup>12</sup>
- 8-speaker sound system with overhead sound bar

- Apple CarPlay<sup>9</sup> support
- Android Auto™<sup>9</sup> compatibility
- Lockable behind-seat storage
- ParkView® Rear Back-Up Camera<sup>3</sup>
- Electronic Stability Control (ESC)<sup>16</sup> and Trailer Sway Damping (TSD)
- Hill Start Assist (HSA) and Electronic Roll Mitigation (ERM)
- Advanced multistage driver and front-passenger air bags<sup>18</sup>
- Supplemental front-seat-mounted side air bags<sup>18</sup>
- Tire Pressure Monitoring Display
- Sentry Key® anti-theft engine immobilizer
- Selectable Tire-Fill Alert
- 3 USB ports
- Full centre console with locking storage
- Rearview day / night mirror
- TORX® toolkit for top / door removal<sup>1</sup>
- Wash-out interior with removable carpet, plus sound barrier and drain plugs
- Body-colour fender flares
- Leather-wrapped steering wheel
- Power, heated mirrors
- Power locking tailgate
- Security alarm<sup>19</sup>
- Sun visors with illuminated vanity mirrors
- Universal garage door opener<sup>20</sup>
- Remote Start System (when equipped with automatic transmission)

## AVAILABLE / WILLYS SPORT S

- Selec-Trac® Active On-Demand Full-Time 4x4 System (requires automatic transmission)
- Wireless Bluetooth speaker (requires Alpine® Premium Audio System)
- Hardtop headliner
- 552-watt, 9-speaker Alpine Premium Audio System
- 3.0L EcoDiesel V6 engine with 8-speed automatic transmission and 3.73 axle ratio

- 8-speed automatic transmission, including Selec-Speed® Control and skid plate
- 32-inch BFGoodrich® M/T tires
- Freedom Top® 3-piece Modular Hardtop in Black with rear sliding window, rear defroster and Freedom Panel storage bag
- Soft top window storage bag
- SiriusXM<sup>7</sup> (1-year trial subscription)
- Roll-up tonneau cover
- Spray-in bedliner
- Jeep® Trail Rated Kit (tow strap, gloves, D-ring and storage bag)
- Mopar Sunrider Flip Top (restrictions apply)
- Mopar Doors-Off<sup>1</sup> Mirror Kit

**DUAL TOP GROUP:** Freedom Top 3-piece Modular Hardtop, premium Black Sunrider Soft Top and Freedom Panel storage bag (requires Mopar Hard Tri-Fold Tonneau Cover, Mopar Soft Tri-Fold Tonneau Cover or roll-up tonneau cover)

**CARGO GROUP WITH TRAIL RAIL™ SYSTEM:** 240-amp alternator, lockable rear underseat storage bin, exterior 115-volt AC outlet, Trail Rail™ bed system and 400-watt inverter

**COLD WEATHER GROUP:** Heated steering wheel, heated front seats and Remote Start System (when equipped with automatic transmission)

**SAFETY GROUP:** LED taillamps, Park-Sense® Rear Park Assist System<sup>2</sup> and Blind-Spot Monitoring<sup>2</sup> and Rear Cross-Path Detection<sup>2</sup>

**ADVANCED SAFETY GROUP:** Auto High-Beam Headlamp Control, Full-Speed Forward Collision Warning Plus<sup>3</sup> and Adaptive Cruise Control with Stop<sup>3</sup> (requires Safety Group; restrictions apply)

**LED HEADLAMP AND FOG LAMP GROUP:** LED daytime running lamps (DRLs), headlamps and fog lamps

**TECHNOLOGY GROUP:** Dual-Zone Automatic Temperature Control, Remote Proximity Keyless Entry, SiriusXM<sup>7</sup> (1-year trial subscription) and 7-inch full-colour Driver Information Display

**DUAL DOOR GROUP:** Your choice of base uppers, premium uppers or lowers only (includes power heated mirrors, remote keyless entry, power windows with 1-touch down and speed-sensitive power locks; requires Mopar Hard Tri-Fold Tonneau Cover, Mopar Soft Tri-Fold Tonneau Cover or roll-up tonneau cover; restrictions apply)

**TRAILER TOW PACKAGE:** 240-amp alternator, heavy-duty engine cooling, Class IV hitch receiver and trailer hitch zoom<sup>2</sup>

**AUXILIARY SWITCH GROUP:** 240-amp alternator, 700-amp maintenance-free battery and 4 programmable auxiliary switches

**SMOKER'S GROUP:** Removable ashtray and cigar lighter

## INTERIORS

- 1) Soulmate Cloth with Peak embossment in Black with tonal stitching and Silver Platinum-painted mid-bolster (standard)
- 2) Soulmate Cloth with Peak embossment in Heritage Tan with tonal stitching and Silver Platinum-painted mid-bolster (standard)

## WHEEL

- 1) 17-inch Mid-Gloss Black Rubicon aluminum (standard)



Willys in Hydro Blue

# SPECIFICATIONS

## EXTERIOR DIMENSIONS

(Sport S and Overland® / Rubicon® / Mojave;  
millimetres unless noted otherwise)

Wheelbase	3,487
Overall Length	5,539
Overall Width	1,875
Overall Height	1,907 / 1,933
Ground Clearance, cm (at curb weight)	25.4 / 29.4 / 28.1
Approach Angle (degrees)	40.8 / 43.4 / 44.7
Breakover Angle (degrees)	18.4 / 20.3 / 20.9
Departure Angle (degrees)	25 / 26 / 25.5
Water Forging Depth <sup>1</sup>	762

## INTERIOR DIMENSIONS

(millimetres unless noted otherwise)

Seating Capacity: Front and Rear	2 / 3 adults
Headroom: Front and Rear (soft top / hardtop)	1,087 / 1,036
Legroom: Front	1,038
Rear	966
Shoulder Room: Front and Rear	1,417
Hip Room: Front	1,370
Rear	1,421
Front-seat Volume Index, L (cu ft)	1,520 (53.7)
Rear-seat Volume Index, L (cu ft)	1,393 (49.2)

## PICKUP BOX DIMENSIONS

(millimetres unless noted otherwise)

Box Volume, L (cu ft)	1,005 (35.5)
Box Length (tailgate closed / open)	60.3 / 81.3
Cargo Width	1,442
Distance between Wheelhouses	1,137
Tailgate Opening Width	1,270
Open Tailgate to Ground Height	885

## CAPACITIES / WEIGHTS

(millimetres unless noted otherwise)

Fuel Tank, L	83
Base Curb Weight, kg (manual / automatic)	
Sport S	2,109 / 2,119
Overland	2,141 / 2,137
Rubicon	2,291 / 2,301
Mojave	2,246 / 2,256



## TOWING AND PAYLOAD

### 3.6L PENTASTAR™ V6

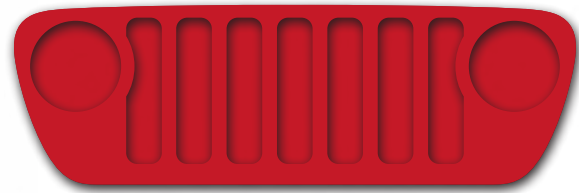
Engine / Transmission	Model	Front GAWR (kg)	Rear GAWR (kg)	GCWR (kg)		Max Trailer (kg)	Max Payload (kg)
				3.73 axle	4.10 axle		
3.6L Pentastar™ V6 with 6-speed manual transmission	Sport S	1,406	1,451	4,127	—	1,814	555 / 771
	Sport S with Trailer Tow Package	1,406	1,700	4,127	—	1,814	555
	Overland	1,406	1,700	4,127	—	1,814	532
	Rubicon	1,406	1,700	—	4,535	2,041	589
	Mojave	1,406	1,700	—	4,490	2,041	544
3.6L Pentastar V6 with 8-speed automatic transmission	Sport S	1,406	1,700	4,377	—	2,041	544
	Sport S with Trailer Tow Package	1,406	1,700	5,034	—	2,721	544
	Sport S with Max Tow Package	1,406	1,700	—	5,806	3,470	725
	Overland	1,406	1,700	5,034	—	2,721	521
	Rubicon	1,406	1,700	—	5,647	3,175	566
Mojave	1,406	1,700	—	5,193	2,721	544	

### 3.0L ECODIESEL V6

Engine / Transmission	Model	Front GAWR (kg)	Rear GAWR (kg)	GCWR (kg)	Max Trailer (kg)	Max Payload (kg)
				3.73 axle		
3.0L EcoDiesel V6 with 8-speed automatic transmission	Sport S	1,451	1,700	5,352	2,948	601
	Overland	1,451	1,700	5,352	2,948	578
	Rubicon	1,542	1,700	5,488	2,948	487

Properly secure all cargo.  
Always tow within the vehicle's capacity.

# EXTERIOR COLOURS



FIRECRACKER RED



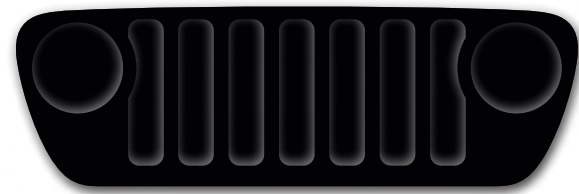
SNAZZBERRY PEARL COAT



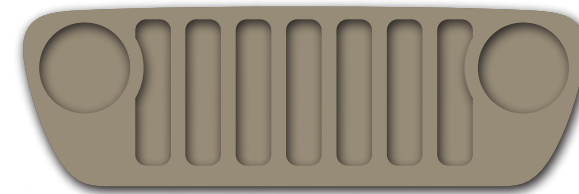
SARGE



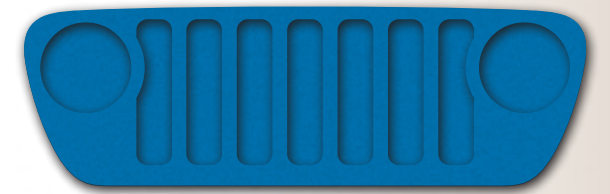
GRANITE CRYSTAL METALLIC



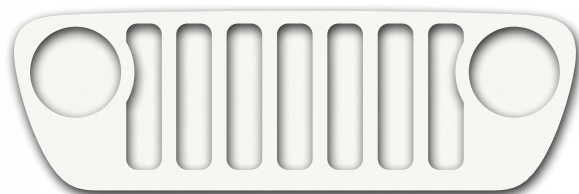
BLACK



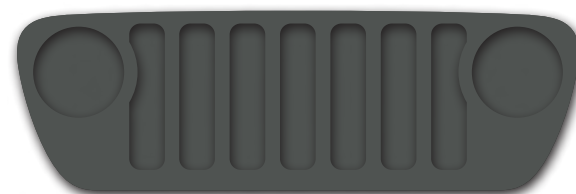
LIMITED EDITION GOBI



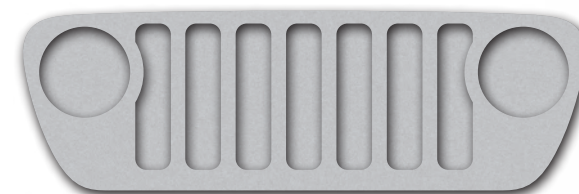
HYDRO BLUE



BRIGHT WHITE



STING-GREY



SILVER ZYNITH

# ADVENTURE AWAITS

BUILD YOURS >

ABOUT THIS CATALOGUE. Since the time of printing, some of the information you'll find in this catalogue may have been updated. Ask your retailer for details. Some of the equipment shown or described throughout this catalogue is available at extra cost. Specifications, descriptions, illustrative materials and all competitive comparisons contained herein are as accurate as known at the time this publication was approved for printing. FCA Canada Inc. reserves the right to make changes at any time without notice and without incurring obligation. For the price of the model with the equipment you desire or verification of specifications contained herein, see your Chrysler, Jeep, Dodge and Ram retailer. ©2021 FCA Canada Inc. All rights reserved. Chrysler, Dodge, Jeep, Ram, SRT, the Jeep grille, Mopar, Mopar Vehicle Protection, Altitude, Command-Trac, Desert Rated, Freedom Top, Gladiator, High Altitude, Mojave, Overland, Park-Sense, ParkView, Rock-Trac, Rubicon, Selec-Speed, Selec-Trac, Sentry Key, Trac-Lok, Trail Rated, Tru-Lok, Uconnect and Willys are registered trademarks, and Pentastar and Trail Rail are trademarks of FCA Canada, Inc.

Alpine and the Alpine logo are registered trademarks of Alpine Electronics, Inc. All rights reserved. Amazon, Alexa and all related logos are trademarks of Amazon.com, Inc. or its affiliates. Google, Android, Android Auto, YouTube and other marks are trademarks of Google LLC. Gorilla Glass is a registered trademark of Corning Incorporated. iPad, iPhone and Siri are registered trademarks and Apple CarPlay is a trademark of Apple Inc. BFGoodrich is a registered trademark of Goodrich Corporation. Bluetooth is a registered trademark of Bluetooth SIG, Inc. Bridgestone and any Bridgestone products or service names are trademarks or registered trademarks of Bridgestone Corporation. Cummins is a registered trademark of Cummins, Inc. Dana is a registered trademark of Dana Corporation. Facebook is a registered trademark of Facebook, Inc. Falken is a registered trademark of Sumitomo Rubber Industries, Ltd. FOX is a registered trademark of Fox Factory, Inc. Instagram is a registered trademark of Instagram, Inc. J.D. POWER is a registered trademark of J.D. POWER AND ASSOCIATES CORPORATION. Michelin is a registered trademark of Michelin North America, Inc. ©2021 SiriusXM Canada Inc. "SiriusXM," SiriusXM Guardian, the SiriusXM logo, channel names and logos are trademarks of SiriusXM Radio Inc. and are used under licence. Sunrider is a registered trademark of Bestop, Inc. TORX is a registered trademark of Acument Intellectual Properties, LLC. The Twitter name, logo, Twitter T, Tweet and Twitter bird are service marks of Twitter, Inc.

MOPAR VEHICLE PROTECTION. FCA Canada Inc. has a vested interest in your satisfaction and owner experience with your new vehicle. Mopar Vehicle Protection offers extended service and maintenance plans to help ensure you'll enjoy your vehicle for many years down the road — for just pennies a day. For more information on comprehensive vehicle coverage, see your local Chrysler, Jeep, Dodge and Ram retailer or call (800) 465-2001.

WARRANTIES. 2022 Chrysler, Jeep, Dodge and Ram vehicles are backed by a 5-year or 100,000-kilometre fully transferable Powertrain Limited Warranty\* with \$0 deductible plus 24-hour roadside assistance! SRT vehicles are backed by a 3-year or 60,000-kilometre fully transferable Powertrain Limited Warranty\* with \$0 deductible plus 24-hour roadside assistance. Basic Warranty coverage is for 3 years or 60,000 kilometres. Rust-through coverage on all body sheet metal is for 3 years. The Cummins Turbo Diesel engine is protected by a separate Limited Warranty, covering the engine for 5 years or 160,000 kilometres. The EcoDiesel engine is backed by a 5-year or 100,000-kilometre fully transferable Powertrain Limited Warranty\* with \$0 deductible plus 24-hour roadside assistance!

\*Whichever comes first. Some conditions may apply. †The 5-Year/100,000-Kilometre Powertrain Limited Warranty does not apply to vehicles sold for certain commercial uses. See your retailer for full details.

1) Be sure to follow all instructions in Owner's Manual for removal of top and doors, and lowering of windshield. Driving with doors off and windshield down is for off-road use only. 2) Class based on Mid-Size Trucks. When properly equipped. 3) This is a driver convenience system, not a substitute for active driver involvement. The driver must remain aware of his or her surroundings and be prepared to take corrective action to avoid collisions. 4) Do not attempt water fording unless depth is known to be less than 76 cm (30 inches). Traversing water can cause damage that may not be covered by the new vehicle warranty. Always off-road responsibly in approved areas. 5) All SiriusXM Guardian equipped vehicles come with a 12-month complimentary trial effective on the date of purchase or lease of a new vehicle. Enrolment in the trial is required to receive service. Upon expiration of the trial period, purchase of a subscription is required to continue SiriusXM Guardian. SiriusXM Guardian is available only on equipped vehicles purchased within the United States, Puerto Rico and Canada. Services can only be used where cellular coverage is available. See Uconnect and SiriusXM Guardian Terms of Service for complete service limitations. You are responsible for using remote features in accordance with any laws, rules or ordinances in effect in your vehicle's location. 6) SiriusXM Traffic Plus and SiriusXM Travel Link require a subscription, sold separately or as a package, by SiriusXM Radio Inc. Trial service is not transferable. Fees and taxes apply. Please see the Customer Agreement at [www.siriusxm.ca](http://www.siriusxm.ca) for complete terms and how to cancel, which includes calling SiriusXM at 1-888-539-7474. All fees and programming are subject to change. Not all vehicles or devices are capable of receiving all services offered by SiriusXM. Data displays and individual product availability vary by vehicle hardware. Current information and features may not be available in all locations, or on all receivers. Weather Forecast, Current Conditions may not be available in all locations. 7) If you decide to continue service after your trial, the subscription plan you choose will continue and you will be charged according to your chosen payment method at then-current rates unless you cancel your services. Fees and taxes apply. Some services and features are subject to device capabilities and location availability. Please see the SiriusXM Customer Agreement at [www.siriusxm.ca/terms](http://www.siriusxm.ca/terms) for complete terms and how to cancel, which includes calling SiriusXM at 1-888-539-7474. All fees and programming are subject to change, provided that we will notify you in advance of any price change. We use personal information in accordance with our Privacy Policy, available at [siriusxm.ca/privacy](http://siriusxm.ca/privacy). 8) Driving while distracted can result in loss of vehicle control. Only use mobile phones and other devices, even with voice commands, when it is safe to do so. Voice commands of phone require a Bluetooth compatible phone. 9) Driving while distracted can result in loss of vehicle control. Only use mobile phones and other devices, even with voice controls, when it is safe to do so. Requires compatible iPhone. See retailer for phone compatibility. Data plan rates apply. To use Android Auto on your phone screen, you'll need an Android phone running 6.0 or higher and the Android Auto App. 10) Siri Eyes Free requires an iPhone equipped with Siri. Certain features not available while the vehicle is in motion. iPhone must be within active cellular range. Customer's existing iPhone data rates apply to Internet-supported features. 11) Never program while driving. GPS mapping and 3D navigation may not be detailed or available in all areas or reflect current road regulations. 12) Three-month / 1GB trial included with the purchase or lease of a new vehicle. Upon expiration of the trial period, purchase of a subscription is required. Wi-Fi Hotspot available through third-party subscription. Requires Internet-enabled mobile device. See retailer for details. This feature is not intended for use by the driver while the vehicle is in motion. Always drive carefully. 13) Compatible with properly equipped Uconnect systems on eligible vehicles. Requires registration of vehicle to SiriusXM Guardian connected services and fulfillment of minimum subscription requirements. Available on properly equipped vehicles with a Uconnect 4C / 4C NAV system. Requires a Wi-Fi Hotspot plan and linked Amazon account to run Alexa in the vehicle. 14) In the event of a medical or other emergency, press the SOS button to be connected to a Customer Care agent who can direct emergency assistance to your vehicle's GPS location. 15) Remote Vehicle Start not available on all vehicles. You are responsible for using remote features in accordance with any laws, rules or ordinances in effect in your vehicle's location. You must have an active subscription to SiriusXM Guardian in order to use remote services. See Terms of Service for service limitations. 16) No system can repeal the laws of physics or overcome careless driving actions. Performance is limited by available traction, which snow, ice and other conditions can affect. When the warning lamp flashes, the driver needs to use less throttle and adapt speed and driving behaviour to prevailing road conditions. 17) Based on *EnerGuide* fuel consumption ratings and fuel tank options. Government of Canada test methods used. Your actual fuel consumption will vary based on driving habits and other factors. Ask your retailer for the *EnerGuide* information. Miles per gallon (mpg) ratings based on imperial gallon. 18) Always sit properly in designated seating positions with seat belts securely fastened at all times. 19) Vehicle must be locked and system activated for alarm to sound. 20) Not compatible with all garage door openers. 21) Compatible with properly equipped Uconnect systems on eligible vehicles. Requires registration of vehicle to SiriusXM Guardian connected services and fulfillment of minimum subscription requirements.

JEEP.CA

Jeep is a registered trademark of FCA US LLC.

# Jeep®

THERE'S ONLY ONE



800-361-3700