

1991

FORD EXPLORER



1991 FORD EXPLORER

An explorer, by definition, is one who travels in search of the new and the exciting.

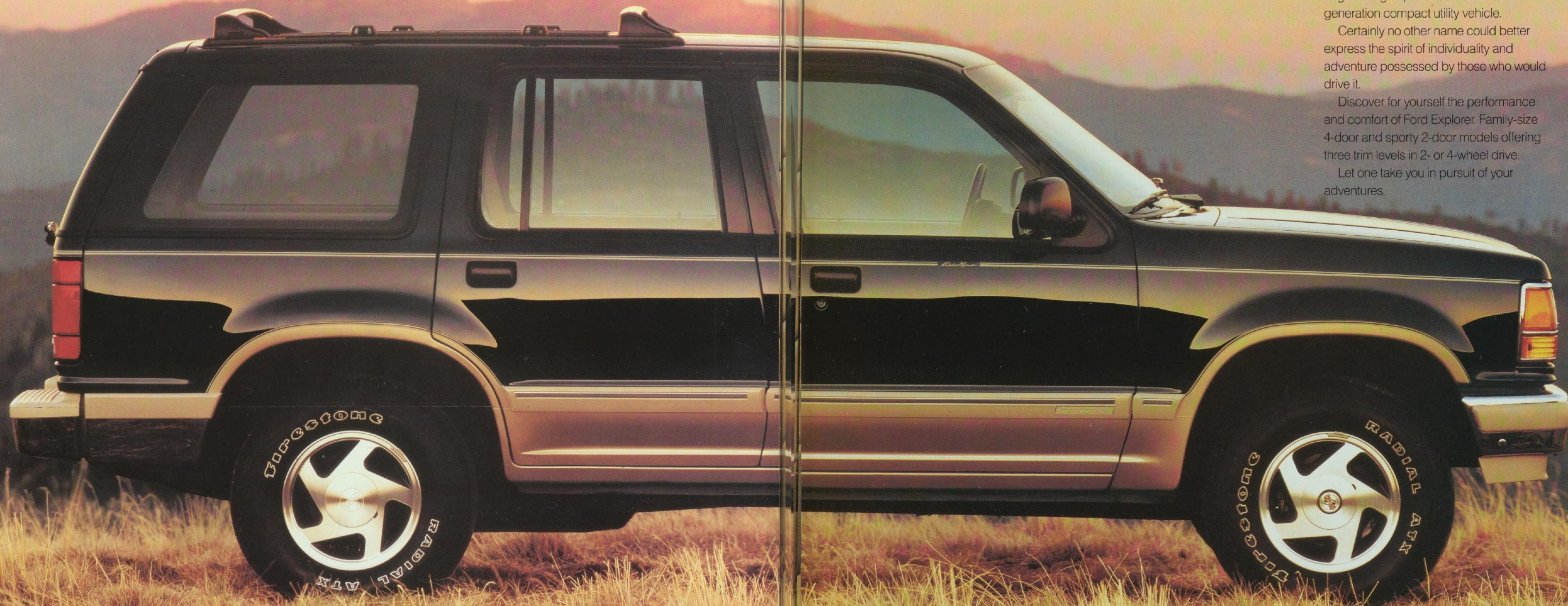
Explorer. We can think of no other name that could better capture the design and engineering capabilities of our next-generation compact utility vehicle.

Certainly no other name could better express the spirit of individuality and adventure possessed by those who would drive it.

Discover for yourself the performance and comfort of Ford Explorer. Family-size 4-door and sporty 2-door models offering three trim levels in 2- or 4-wheel drive.

Let one take you in pursuit of your adventures.

Explorer Eddie Bauer 4-Door in unique two-tone Twilight Blue Clearcoat Metallic and Light Sandalwood. Some equipment shown is optional.



THE NEW EXPLORER 4-DOOR

The look of Explorer is contemporary and aerodynamic. It's a shape of style and function you would expect from Ford Motor Company, a world leader in automotive design.

Wraparound front bumpers with integral spoiler, flush-mounted glass, and limousine-style doors with hidden drip rail system are among Explorer's many air-flow management features.

To appreciate our finest achievement in designing the Explorer 4-Door, however, you'll have to look inside — at all the comforts and conveniences that plenty of space affords.

Here, we saw an opportunity to break new ground. And we made the most of it. We went to great lengths, and widths, to provide much more room for people and space for cargo than we ever had before in a compact utility vehicle.

What we created is a family-size 4-door compact utility whose interior is more spacious than any other in its class. And the four-door Explorer is one of the very few compact utility vehicles that offer the option of six-passenger seating.

The Explorer 4-Door. Here is a line of V-6-powered 4x2 and 4x4 vehicles with a combination of style, performance, space and comfort that takes the term "compact utility" to another dimension.



The roomy Explorer 4-Door features a versatile 60/40 rear split bench seat.

Explorer Eddie Bauer with optional front sport bucket seats with leather seating surfaces in Light Sandalwood. Some equipment shown on these pages is optional.



EXPLORER 4-DOOR DESIGN

Here, at last, is a compact utility vehicle with honest family-size comfort. Seating for five is standard. Or accommodate six with the optional split bench front seat.

It's no accident that the Explorer 4-Door's long 111.9-in. wheelbase contributes to the ample measure of rear seat leg room that no competitor can match. Everyone enjoys the comfort that Explorer's best-in-class space provides.

The Explorer 4-Door also provides more cargo space than the leading competitors — 81.6 cu. ft. with a 6-ft.-long flat cargo floor (rear seat backs lowered).

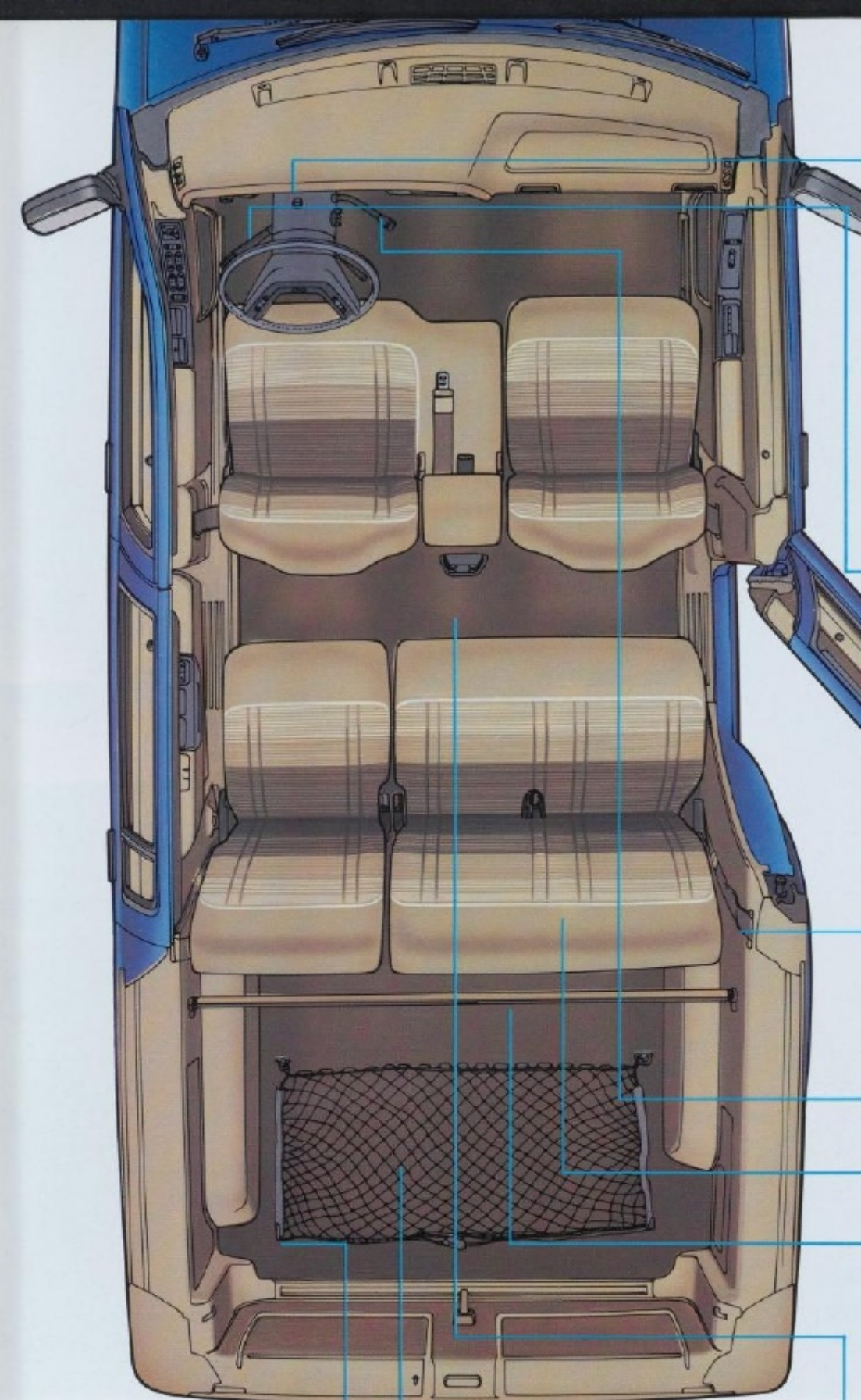
The Explorer 4-Door is not only spacious. It's also easy to get into and out of, thanks to a low step-in height — the first of many car-like conveniences you'll experience.

And, equally important, Explorer has the power and handling and the ergonomic seating, instruments and controls to satisfy the driving enthusiast within you.

Drive the Explorer 4-Door and open new doors to greater travelling comfort, enjoyment, and adventure.



The Explorer 4-Door offers a spacious interior and a low step-in height for easy entry and exit.



Four cargo tie-down hooks are standard. A cargo net is included in Sport, XLT and Eddie Bauer trim levels.

The standard full-size spare tire is mounted to the frame beneath the load floor. This design increases cargo space.

Six-passenger seating with the split bench front seat option is available with the 4-door XL and XLT trim levels. Five-passenger seating is standard.

Ergonomic instrument cluster includes a tachometer; engine temperature, oil pressure, fuel level and voltmeter gauges. Instrument panel also has four air vent registers plus front door window demisters.

On a single steering column-mounted lever are controls for turn signals, constant-speed and interval windshield wipers, windshield washer, headlamp high-beams, and flash-to-pass feature.

Front and rear outboard seating positions have lap/shoulder belts with automatic retractors. Center seating positions have lap belts.

Optional 4-speed automatic transmission shift lever is mounted on the steering column, providing greater leg room.

The versatile 60/40 split bench rear seat lets you lower one or both seat backs to suit passenger- and cargo-carrying needs.

The Explorer 4-Door has 81.6 cu. ft. of cargo space with a 72.9-in. long cargo load floor (rear seat backs lowered).

Rear seating compartment has its own heat duct.



In a pod to the right of the instrument cluster are, from top to bottom: (1) the push-button control module for the Touch Drive electric shift transfer case, standard in Explorer 4x4 models; (2) the stereo system; and (3) the heating/cooling/defroster controls. (Some equipment shown is optional.)



Features of the optional power equipment group (power door locks, windows, and electric remote-control mirrors) are located on a special ergonomic door-mounted panel. Tactile controls, easily identified by touch alone, are designed with a "bump" at one end ("on") and a "dimple" at the other end ("off").

EDDIE BAUER 4-DOOR

When the time came to select a name for the best of our next-generation Explorer sport utilities, we could not have picked one more expressive of "top of the line" than Eddie Bauer, the name widely known for quality outdoor apparel.

The Explorer Eddie Bauer is uniquely styled with its own two-tone paint treatment. And it's outfitted with P235 outline white-letter all-terrain tires on luxury aluminum wheels; power windows, door locks, and electric remote-control mirrors; luggage rack; speed control/tilt wheel; and rear wiper/washer/defroster.

What's more, a two-piece luggage set is shipped directly to you from Eddie Bauer. And you get the "Ford Care" extended maintenance and limited warranty with coverage up to 24 months or 24,000 miles. Ask for a copy of this limited warranty at your Ford Dealer.

Explorer Eddie Bauer interior with premium cloth captain's chairs in Light Sandalwood.

Air conditioning and the electronic premium AM/FM stereo system with cassette tape player are included in the Eddie Bauer Preferred Equipment Package.



Explorer Eddie Bauer 4-Door in unique two-tone Medium Sandalwood Clearcoat Metallic and Light Sandalwood. Some equipment shown on these pages is optional.

XLT AND XL 4-DOOR

Chances are, a good number of people in the market for a family vehicle will bypass the road travelled by typical sedans and wagons.

Their active, varied life styles call for a vehicle of uncommon flexibility. So they'll choose the new Explorer 4-Door — a vehicle that's as much at home on a suburban street as at a wilderness campsite.

The Explorer 4-Door XLT and XL models are especially well-suited for families. Along with their spaciousness, versatility, smooth 4-liter V-6 performance and the choice of 4x2 or 4x4 model, both offer great value in their lists of comfort and convenience features.

Explorer XL comes with reclining front high-back bucket seats, courtesy light group (glove box, ashtray and engine compartment lights), the two-way liftgate that lets you raise the entire liftgate or just

the window, AM/FM stereo system, interval wipers with variable speed settings, plus analog gauges (tachometer, voltmeter, fuel, engine temperature and oil pressure). A trip odometer, too. Among the XL 4x4's features is the Touch Drive transfer case which delivers the added traction and security of 4-wheel drive at the touch of a button on the instrument panel.

Explorer XLT is even more impressive. Standard are cloth reclining captain's chairs, the power equipment group (power windows, door locks, and electric remote mirrors), auxiliary side sun visors, deluxe reading light/dome lamp, speed control and tilt steering wheel, and cast aluminum wheels. Plus deluxe tape stripe, air conditioning, and electronic premium AM/FM stereo sound system with cassette tape player in the XLT Preferred Equipment Package.

Both XL and XLT provide standard seating for five passengers, or six-passenger seating with the 60/40 split bench front seat — an option that isn't available in most other compact utility vehicles.

What's more, in the Explorer XLT you can order optional leather seating surfaces on sport bucket seats with power lumbar control, and the outstanding sound fidelity of the Ford JBL audio system with cassette tape or compact disc player.

Explorer XLT 4-Door interior in Crystal Blue. The optional 60/40 split bench front seat (shown) makes the Explorer 4-Door a six-passenger vehicle.



Explorer XLT 4-Door in deluxe two-tone Silver Clearcoat Metallic and Raven Black.

Explorer XL 4-Door in Crystal Blue Clearcoat Metallic.

Some equipment shown on these pages is optional.

CUSTOMER-DRIVEN DESIGN

At Ford, it is our philosophy that every detail of design should contribute to "customer satisfaction." Examine the new Explorer up close and you'll find many examples of purposeful design.

The limousine-style doors, for instance, demonstrate that function is every bit as important as style. The wrapover roof design with hidden drip rail system not only contributes to Explorer's contemporary styling, but is also an important aerodynamic feature.

How could we provide a "full-size" spare tire as standard equipment without encroaching on cargo space? We could have mounted it to an outside swingaway carrier. But for Explorer we used a better design: the tire is in a carrier between the frame rails, out of the way but easily reached and removed when needed.

You'll also discover that Explorer is engineered with emphasis on all-around performance to satisfy the wide variety of personal uses for which this new generation of 4-door and 2-door compact utility vehicles is designed.

In Explorer, as in every car and light truck we build, every detail — whether it be a major engineering component or a single switch on the instrument panel — is important in our "customer-driven" approach to design.

Four cargo tie-down hooks are standard. In Sport, XLT and Eddie Bauer, a cargo net is also included.

The limousine-style doors merge into the roofline. The hidden drip rail system eliminates the conventional drip moldings; the flush door glass helps reduce air resistance and wind noise.

Multi-port fuel-injected 4.0L V-6 is controlled by Ford's EEC-IV computer. EEC-IV continuously "fine-tunes" the engine; controls fuel-air mixture and adjusts spark timing to optimize power and efficiency.

Twin-I-Beam (4x2) and Twin-Traction Beam (4x4) front suspension systems feature an axle-coil spring assembly for each wheel, providing independent wheel action for ride smoothness and control.

Front coil springs and rear 2-stage multi-leaf springs are computer-selected to match precisely the vehicle's passenger- and load-carrying requirements.

Nitrogen gas-pressurized shock absorbers contribute to a smooth and controlled ride by suppressing the foaming action of the hydraulic fluid caused by rough or bumpy road conditions.

Front and rear stabilizer bars, connecting the axles to the frame, function as torsion bars to help improve handling.

Recirculating ball-type steering system is power-assisted; provides easy steering in low-speed turning maneuvers.

A 5-speed manual transmission with close-ratio gearing and synchronized reverse gear is standard. A 4-speed automatic with steering column-mounted shift is optional. Both feature over-drive high gear.

The ladder-type frame features full-length, heavy gauge channel side rails and five crossmembers, providing a solid foundation for the vehicle body and strength for trailer towing.

The electronic rear anti-lock brake system is designed to inhibit complete rear wheel lockup and help you come to a straight stop under most operating conditions when travelling in 2-wheel drive.

Tires are of all-season or all-terrain design depending on model (see page 21). All-season tread provides excellent traction under various weather and road conditions. All-terrain tread provides excellent traction as well, for both on and off-road travel.

4x4 model has standard auto-locking front hubs with Touch Drive electric 2-speed shift transfer case. Features include: on-the-fly shifting from 2WD to 4WD-High and back at any speed; an electromagnetic clutch that spins up the drive system from zero to driving speed in milliseconds; and electric interlock 4WD-Low shift protection. Manual-locking front hubs with manual-shift transfer case are optional. Skid plates are included with both automatic and manual systems.

Explorer features 2½ mile-per-hour front wraparound and rear step bumpers. A properly equipped Explorer can tow up to 3,500 pounds with the standard rear bumper, or a maximum trailer weight of 5,700 pounds (4x2) or 5,400 pounds (4x4) (reduced by passenger and cargo weight in the towing vehicle). See your dealer for required equipment.



You can access Explorer's spacious cargo compartment from the rear by raising the entire steel liftgate or just the window.

The standard full-size spare tire is mounted in a carrier between the rear frame rails for increased cargo space. The tire lowers easily with a crank mechanism.

SPORT 2-DOOR

At the crossroads where the spirit of the independent life style and the desire for driving adventure meet, there is the Ford Explorer Sport 2-Door.

The Explorer aero design takes on a distinctly dramatic style with black-out treatment all-around, black lower two-tone paint, and privacy glass rear quarter windows. The P235 OWL all-terrain tires* are on deep-dish cast aluminum wheels.

Inside, cloth captain's chairs with console, the power equipment group and air conditioning are included.* A leather-wrapped steering wheel, too, and more.

And with its 4.0L multi-port EFI V-6 power, its suspension system equipped with stabilizer bars and heavy-duty gas-pressurized shocks, Explorer Sport has the muscle, and the handling capability, to take on most on- or off-road challenges.

*Preferred Equipment Package features.

Explorer Sport 2-Door interior with optional cloth sport bucket seats in Scarlet Red.



Explorer Sport 2-Door in unique two-tone Wild Strawberry Clearcoat Metallic and Black. Some equipment shown on these pages is optional.

EDDIE BAUER AND XL 2-DOOR

Whether you're commuting to work or getting away for the weekend, regardless of where you're going, you should derive as much enjoyment as possible from the driving experience.

With this "driver-oriented" philosophy we designed the Explorer 2-Door's contemporary aero styling and modern interior, and we engineered its exciting all-around performance.

Inside, we outfitted the Explorer 2-Door models with firm and supportive seating for four passengers, ergonomic instruments and controls, and versatile 50/50 split-folding rear seats, to name just a few of the many standard features listed on page 21.

To further make the practical side of the sport/utility equation as attractive as the fun side, we gave the Explorer 2-Door a surprising 69.4 cu. ft. of maximum cargo space (rear seats down). With the rear seat backs raised, you have 32.6 cu. ft.

Finally, to satisfy your personal style and your equipment needs, we created a line of three well-equipped trim levels.

Choose the youthful Explorer Sport (pages 16-17); or, featured here, the luxury-sport Eddie Bauer or the fun-tough Explorer XL. All have in common the same high standards of design and engineering performance, and quality.

The top-of-the-line Eddie Bauer 2-Door in unique two-tone Deep Emerald Green Clearcoat Metallic and Light Sandalwood.



Explorer XL 2-Door in Silver Clearcoat Metallic.

Explorer Eddie Bauer 2-Door interior with standard reclining captain's chairs in Light Sandalwood. Some equipment shown on these pages is optional.

PREFERRED EQUIPMENT PACKAGES

Preferred Equipment Packages are groups of popular features. They not only make Explorer an outstanding value, but also make it easy for you to order a vehicle equipped the way you want it. Simply select the trim level — XL, Sport, XLT or Eddie Bauer — with the Preferred Equipment Package you want from the chart on the following page.

To further personalize your new Ford Explorer, choose from the wide selection of options available individually.

The Explorer Sport, XLT and Eddie Bauer Preferred Equipment Packages offer special savings on those features with the "■" designation.

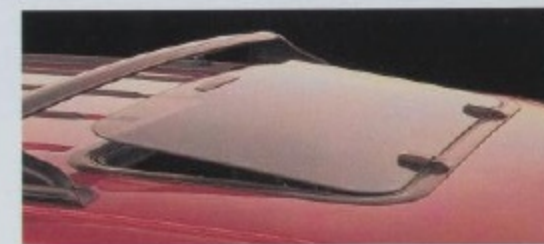
The top-of-the-line Eddie Bauer, for example, includes the comfort of air conditioning as well as the electronic premium-sound AM/FM stereo system with cassette tape player and digital clock.

Compared with the manufacturer's suggested retail prices for these desirable features if they were to be purchased separately, the package discount is the equivalent of getting certain equipment at no extra cost.

Features in the Preferred Equipment Packages are subject to change over the course of the year. For the latest information on package contents and discounts, consult your Ford Dealer.



A



B



B



C

(A) From top to bottom: full wheel cover; deluxe steel wheel with trim rings; deep-dish cast aluminum wheel; and luxury aluminum wheel. See page 21 for application by trim level.

(B) The optional tilt-up open air roof can be flipped open or removed. Shown also is the optional roof luggage rack (standard on Eddie Bauer).

(C) The optional rear window wiper/washer/defroster (standard on Eddie Bauer) clears the window of rain, mist or ice. When shut off, the wiper lifts off the glass and rests on the bottom window molding.

PREFERRED EQUIPMENT PACKAGES

■ = Included in Package S = Standard O = Optional

	2-Door Model			4-Door Model		
	XL 930F	Sport 931F	Eddie Bauer 932F	XL 940F	XLT 941F	Eddie Bauer 942F
Air conditioning	O	■	■	O	■	■
Power equipment group (may be deleted from Sport) (1)		■	S		S	S
Deluxe tape stripe					■	
Electronic premium AM/FM stereo with cassette tape player and digital clock	O	O	■	O	■	■
Tilt-up open air roof (included in Eddie Bauer for a limited time — see your dealer)		O	■	O	O	■
4.0L V-6 engine/5-speed manual overdrive transmission	S	S	S	S	S	S
4.0L V-6 engine/4-speed automatic overdrive transmission	O	O	O	O	O	O
California emissions system	O	O	O	O	O	O
High altitude principal use	O	O	O	O	O	O
P225 RBL all-season tires	S	S		S	S	
P235 OWL all-terrain tires	O	■	S	O	O	S
Knitted vinyl bucket seats	S	S		S		
Cloth captain's chairs with floor console (may be deleted from Sport and replaced with vinyl bucket seats)	O	■		O	S	
Cloth sport bucket seats with power lumbar support and floor console		O			O	
Cloth 60/40 split bench seat				O	O	
Cloth Eddie Bauer captain's chairs with floor console			S			S
Sport bucket seats with leather seating surfaces and floor console		O	O		O	O
MANUAL TRANSMISSION SPECIAL VALUE PACKAGE includes:						
Air conditioning	■			■		
Electronic premium AM/FM stereo with cassette tape player and digital clock		■				
Speed control/tilt steering wheel		■				
Special bonus discount (see your dealer for details)					■	
Luggage rack (100-lb. capacity)					■	
Sport bucket seats with leather seating surfaces and floor console			■			■
Super engine cooling	O	O	O	O	O	O
Privacy™ glass rear quarter windows	O	S	S			
Engine block heater	O	O	O	O	O	O
Performance axle (limited slip)	O	O	O	O	O	O
Manual locking hubs — 4x4 only (2)	O	O	O	O	O	O
License plate bracket	O	O	O	O	O	O
Light group (3)	O	S	S	S	S	S
Bodyside moldings	O			O	S	
Luggage rack (100-lb. capacity)	O	O	S	O	O	S
Speed control/tilt steering wheel	O	O	S	O	S	S
Deluxe two-tone paint					O	
Trailer towing package (4)	O	O	O	O	O	O
Deep dish cast aluminum wheels	O	S	O	O	S	O
Deluxe steel wheels with trim rings (5)	O			O		
Luxury aluminum wheels		O	S		O	S
Rear window wiper/washer/defroster	O	O	S	O	O	S
Electronic AM/FM stereo radio with digital clock and four speakers	S	S	S	S	S	S
Electronic AM/FM stereo radio with cassette tape player, digital clock and four speakers	O	O	O	O	O	O
Ford JBL audio system with cassette tape player		O	O		O	O
Ford JBL audio system with compact disc player		O	O		O	O
Radio credit option (deletes standard radio)	O	O	O	O	O	O

(1) Includes power windows, power door locks, electric remote-control mirrors, and high-series door trim. (2) Replaces standard automatic locking front hubs and Touch Drive transfer case. (3) Includes glove box light, ashtray light, and engine compartment light. (4) Includes wiring harness, heavy-duty flasher, and super engine cooling. (5) Optional on XL 4x2; standard on XL 4x4 model.

MAJOR STANDARD FEATURES

EXTERIOR

- ☐ Aero-design halogen headlamps with bright frames (XL, XLT, Eddie Bauer); black frames (Sport)
- ☐ Grille: bright (XL, XLT, Eddie Bauer); black (Sport)
- ☐ Front bumper: bright with rub strip and spoiler (XL, XLT, Eddie Bauer); black with rub strip and spoiler (Sport)
- ☐ Rear trailer-tow bumper: bright with rub strips (XL, XLT, Eddie Bauer); black with rub strips (Sport)
- ☐ Tinted windshield and side/rear windows
- ☐ Flip-open opera windows (2-door models)
- ☐ Foldaway mirrors: black door-mounted (XL, Sport); electric remote-control (XLT, Eddie Bauer)
- ☐ Special paint treatment: unique two-tone with Light Sandalwood tape stripes (Eddie Bauer); black sport two-tone (Sport)
- ☐ 2-way liftgate: raise the entire liftgate or just the rear window
- ☐ Roof rack (Eddie Bauer)
- ☐ Wheel trim: full covers (XL 4x2); deluxe steel wheels with trim rings (XL 4x4); deep-dish cast aluminum wheels (Sport, XLT); luxury aluminum wheels (Eddie Bauer)
- ☐ Full-size spare tire, frame-mounted

INTERIOR

- ☐ Front seat back recliners
- ☐ Rear split bench seats: 2-passenger 50/50 (2-door); 3-passenger 60/40 (4-door)
- ☐ Ergonomic instrument cluster with tachometer, fuel, engine temperature, voltmeter and oil pressure gauges; trip odometer
- ☐ Instrument cluster appliqué: black (XL); color-keyed (Sport, XLT, Eddie Bauer)
- ☐ Side window demisters on instrument panel
- ☐ Stalk-mounted controls for turn signals, windshield wipers/washer, high beams, flash-to-pass feature
- ☐ Interval windshield wipers
- ☐ Steering wheel: black vinyl (XL); black leather-wrapped (Sport, XLT, Eddie Bauer)
- ☐ Visors: Driver and passenger with RH visor mirror (XL); illuminated driver and passenger visor mirrors plus auxiliary side visors (Sport, XLT, Eddie Bauer)
- ☐ Child-proof rear door locks (4-door)
- ☐ Cargo area light
- ☐ Cargo area cover (XLT, Eddie Bauer)

TECHNICAL

- ☐ 4.0L V-6 engine
- ☐ Multi-port electronic fuel injection, EEC-IV computer
- ☐ 5-speed manual overdrive transmission
- ☐ Power steering
- ☐ Power brakes with rear anti-lock system
- ☐ Twin-I-Beam independent front suspension (4x2)
- ☐ Twin-Traction Beam independent front suspension (4x4)
- ☐ Heavy-duty nitrogen gas-pressurized shock absorbers
- ☐ Front and rear stabilizer bars
- ☐ Automatic locking front hubs and Touch Drive electric shift transfer case (4x4)
- ☐ Skid plates: fuel tank (4x2, 4x4) and transfer case (4x4)

EXPLORER SPECIFICATIONS, DIMENSIONS, COLORS AND TRIMS

SPECIFICATIONS

Drivetrain	4x2 or 4x4
Engine type	4.0 liter V-6
Induction system	Multi-port electronic fuel injection with EEC-IV electronic engine controls
Horsepower, SAE net	155 @ 4200 rpm
Torque, SAE net	220 lbs.-ft. @ 2400 rpm
Compression ratio	9.0:1
Transmission	Std. 5-speed manual overdrive Opt. 4-speed automatic overdrive
Battery	72 AH, 650 CCA maintenance-free
Alternator	95 amps
Frame	Ladder-type, single channel with five crossmembers
Front suspension (4x2)	Twin-I-Beam axle, coil springs (computer-selected), gas-pressurized shocks, stabilizer bar
Front suspension (4x4)	Twin-Traction Beam axle, coil springs (computer-selected), gas-pressurized shocks, stabilizer bar
Rear suspension (4x2/4x4)	Semi-floating-type rear axle (limited-slip differential optional), 2-stage variable-rate leaf springs (computer-selected), gas-pressurized shocks, stabilizer bar
4x4 front hubs/transfer case	Std. automatic locking hubs and Touch-Drive electric shift transfer case Opt. free-running manual locking hubs and part-time, 2-speed shift transfer case
Steering	Recirculating ball-type, power-assisted
Brakes	Power front discs/rear drums with computerized rear anti-lock system
Fuel Tank	19 gallons
Curb-to-curb turning diameter (ft.)	2-Door: 34.8 (4x2) 35.6 (4x4) 4-Door: 37.8 (4x2) 38.5 (4x4)
Wheels (type/size)	5-hole disc/15" x 6.0 JJ
Tires (see page 21 for applications)	P225 RBL all-season and P235 OWL all-terrain

EXPLORER 2-DOOR DIMENSIONS

	4X2	4X4
Wheelbase	102.1"	102.1"
Overall length	174.4"	174.4"
Overhang (front/rear)	29.6"/42.8"	29.6"/42.8"
Tread (front/rear)	58.3"/58.3"	58.3"/58.3"
Overall width	70.2"	70.2"
Width between wheelhouses	41.9"	41.9"
Overall height (empty — max.)	67.5"	67.5"
Step-in height (unloaded)	19.3"	20.1"
Load floor height (loaded)	25.5"	25.5"
Liftgate opening height	33.7"	33.7"
Axle clearance — loaded (rear)	6.3"	6.3"
Angle of approach — loaded	—	28.0°
Angle of departure — loaded	—	18.0°
Ramp breakover angle — loaded	—	16.2°
Cargo length — rear seat up	29.2"	29.2"
— rear seat down	60.2"	60.2"
Cargo volume — rear seat up (cu. ft.)	32.6	32.6
— rear seat down	69.4	69.4
Seating capacity	4	4

EXPLORER 4-DOOR DIMENSIONS

	4X2	4X4
Wheelbase	111.9"	111.9"
Overall length	184.3"	184.3"
Overhang (front/rear)	29.6"/42.8"	29.6"/42.8"
Tread (front/rear)	58.3"/58.3"	58.3"/58.3"
Overall width	70.2"	70.2"
Width between wheelhouses	41.9"	41.9"
Overall height (empty — max.)	67.3"	67.3"
Step-in height (unloaded)	19.1"	20.1"
Load floor height (loaded)	29.2"	26.1"
Liftgate opening height	33.7"	33.7"
Axle clearance — loaded (rear)	6.3"	6.3"
Angle of approach — loaded	—	27.0°
Angle of departure — loaded	—	18.0°
Ramp breakover angle — loaded	—	14.9°
Cargo length — rear seat up	38.1"	38.1"
— rear seat down	72.9"	72.9"
Cargo volume — rear seat up (cu. ft.)	42.6	42.6
— rear seat down	81.6	81.6
Seating capacity — Eddie Bauer	5	5
— XL, XLT	5 or 6*	5 or 6*

*Six-passenger seating with optional split bench front seat in XL and XLT 4-door models.

COLORS AND TRIMS

Interior Trim Colors				XL, Sport, XLT Exterior Colors
Medium Grey	Crystal Blue	Scarlet Red	Light Sandalwood	
X		X	X	Raven Black
X	X	X	X	Oxford White
X		X	X	Cabernet Red
X		X	X	Bright Red*
X		X		Medium Platinum Clearcoat Metallic
X		X		Wild Strawberry Clearcoat Metallic
X			X	Deep Emerald Green
			X	Light Sandalwood Clearcoat Metallic
			X	Medium Sandalwood Clearcoat Metallic
X	X			Crystal Blue Clearcoat Metallic
X	X			Twilight Blue Clearcoat Metallic
X	X			Light Crystal Blue Clearcoat Metallic
X	X	X		Silver Clearcoat Metallic
				Eddie Bauer Exterior Colors**
			X	Raven Black
			X	Cabernet Red
			X	Wild Strawberry Clearcoat Metallic
			X	Deep Emerald Green Clearcoat Metallic
			X	Twilight Blue Clearcoat Metallic
			X	Medium Sandalwood Clearcoat Metallic

*2-Door model only.
**With Light Sandalwood lower two-tone.



Optional deluxe two-tone paint for XLT. The accent color is applied below bodyside tape stripe at beltline and covers entire lower bodyside and tailgate. There are many color combinations to choose from. See your dealer for details.

OWNER INFORMATION

6-YEAR/100,000-MILE CORROSION PROTECTION

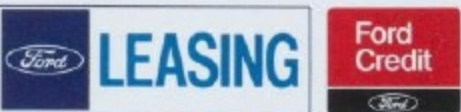
Corrosion warranty coverage for body panel rust-through is 6 years or 100,000 miles, whichever comes first. See your Ford Dealer for a copy of this limited warranty.

OPTIONS AVAILABILITY

Options shown or described in this catalog are available at extra cost and may be offered only in combination with other options and subject to additional ordering requirements or limitations.



Participating Ford Dealers offer the Lifetime Service Guarantee, which guarantees their customer-paid work on your Ford vehicle for as long as you own it. A covered repair is paid for once. If it ever has to be fixed again, the repairing dealer will fix it free. Ask to see the Lifetime Service Guarantee when you visit your participating Ford Dealer.



The leasing alternative is available to qualified lessees through your Ford Dealer. A participating dealer can arrange financing terms or a Red Carpet Lease® tailored to your circumstances through Ford Credit.

PRODUCT CHANGES

Ford Division reserves the right to change product specifications at any time without incurring obligations.

"ASK YOUR FORD DEALER"

Following publication of this catalog, certain changes in standard equipment, options, prices and the like, or product delays, may have occurred which would not be included in these pages. Your Ford Dealer is your best source for up-to-date information.



"Tread Lightly" is an educational program designed to increase public awareness of land-use regulations and responsibilities in our nation's wilderness areas. Ford joins the U.S. Forest Service and the Bureau of Land Management in encouraging you to help preserve our national forests and other public and private lands by "treading lightly."

