

FORD **RANGER**



Feel the difference



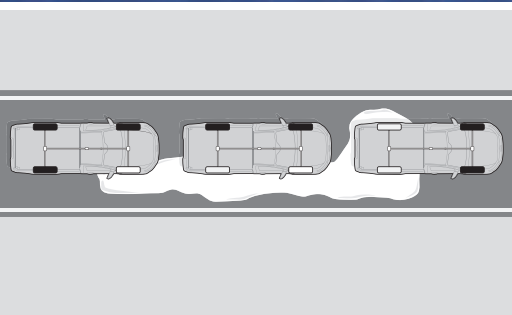
You're a professional who takes pride in what you do. You demand a lot from yourself. And you're equally demanding of your pick-up – when working and in your time off. This is why you challenged us to make the best Ford Ranger ever.

We heard you loud and clear.

And we love pick-ups. So we immediately set to work. We were relentless, leaving no stone unturned in our determination to set new standards in pick-up design. This is the result. The Ford Ranger: engineered to excel in every area so that it can make your work life easier and your leisure time more fun.

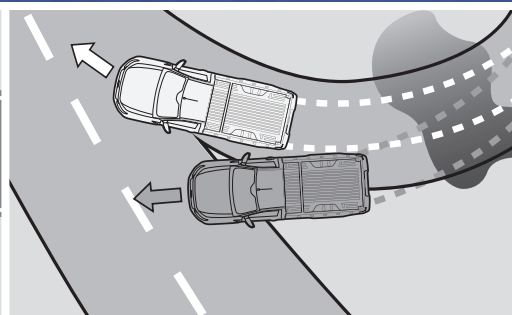
The right tool can make child's play of men's work

When you need to get to a remote location in a hurry, you need power, torque and an abundance of traction. Introducing Ford Ranger's all-new four-wheel drive system.



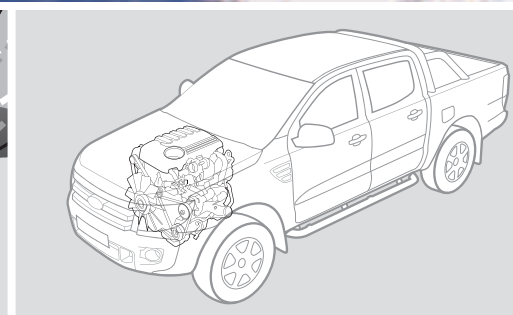
All-new four-wheel drive system

The grip provided by Ford Ranger's new four-wheel drive system is optimised by a comprehensive ESP system. Part of the system is TCS (Traction Control System) – which has three driver-switchable settings – resulting in excellent off-road driving capabilities such as when driving in snow.



Electronic Stability Programme (ESP)

ESP is designed to enhance stability and traction on loose and slippery surfaces by using a combination of braking and engine torque reduction. ESP is also designed to provide automated control of off-road descents, to stop Ranger rolling back when setting off uphill, and to assist in preventing trailer sway. ESP is standard on all Ford Ranger models.



All-new range of engines

An all-new pick-up deserves all-new engines – and Ford Ranger does not disappoint. Powerful new leading-edge technology 2.2 and 3.2-litre Duratorq TDCi diesel engines provide all the power and torque you need for real pulling power when you need it.

“My job takes me to some remote locations – and I rely on my pick-up to get me there.”

Main image shows a Ford Ranger Double Cab Limited 4x4 with Performance Blue metallic paint (option).

If a job's worth doing, it's worth doing once

Ford Ranger has a huge payload capacity and impressive load box volume. This means fewer trips to do the job. Fewer trips means less time. And, as we all know, time is money.



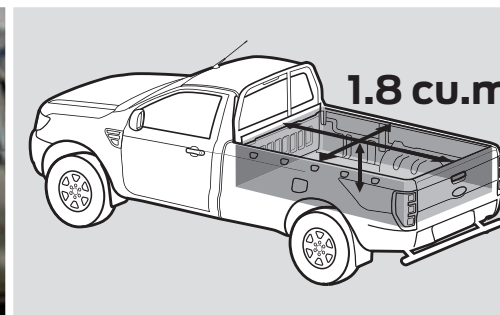
“I need a truck that can handle bigger, heavier loads.”

Main image shows a Ford Ranger Regular Cab XL 4x4 with Thunder metallic paint (option).



Huge payload capacity

With a choice of powerful new diesel engines, Ford Ranger comes with an impressive payload capacity (1340 kg for the XL Regular Cab).



Impressive load box volume

Ford Ranger has been designed to work harder to earn its keep, so it offers a huge load box volume (1.8 cu.m to the top of the load box for the Regular Cab).

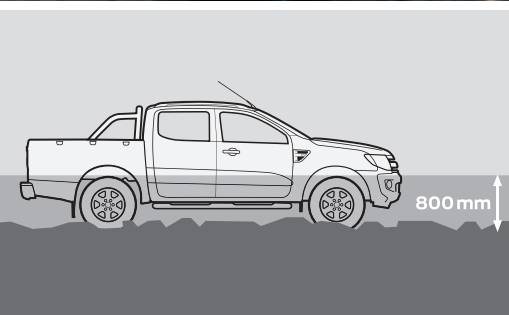


DIN-compliant tie-downs

Ford Ranger's internal and external tie-downs are DIN-compliant, and can handle up to 4000 newtons of lashing force. Some series (Limited and Wildtrak) are also available with a C-channel tie-down system for the load box.

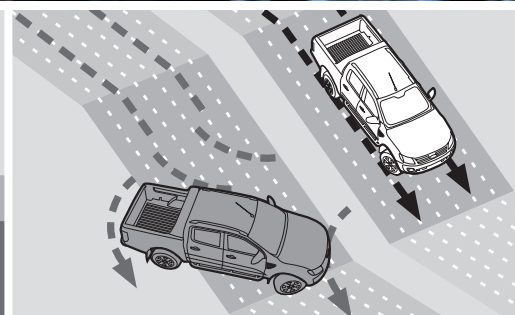
Just the job for when your work is done

‘Go anywhere. Do anything’ sums up the design brief when it comes to defining Ford Ranger’s high-tech ground-covering capability.



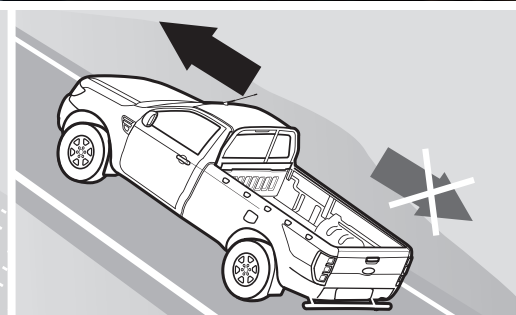
Excellent wading depth

Ford Ranger is designed to drive through water up to 800 mm deep – which can be the difference between getting there or not.



Hill Descent Control

Hill Descent Control is designed to regulate your downhill speed in off-road conditions without you even having to touch the brake or the accelerator pedals – and it operates in forward and reverse gears.



Hill Start Assist

Hill Start Assist is designed to prevent you from rolling down a slope when you move your foot from the brake pedal to the accelerator pedal. It works in forward and reverse gears, so is ideal for towing and pulling heavy loads.

“I take my pick-up to places I wouldn’t even take my bike.”

Main image shows a Ford Ranger Super Cab XLT 4x4 in Moondust Silver (option).

We take the same pride in our work as you do in yours

Every single component in the Ford Ranger has been engineered for dependability and strength with one objective clearly in mind; quality that's built to last.



“I expect the best from myself, so I demand the best from my pick-up.”

Main image shows a Ford Ranger Double Cab Limited 4x4 with Copper Red metallic paint (option).



6-speed automatic transmission

The smooth 6-speed automatic transmission – with manual sequential-shift capability – available in the Ford Ranger is typical of the quality engineered into every aspect of its design.



84,000 door shuts

Rigorous testing of the entire vehicle – from the drivetrains to the number of door-shuts in testing – gives Ford Ranger excellent durability.



Tested to extremes

From frost-covered prototypes started up in minus 40°C temperatures at oxygen-starved 4500-metre altitudes, to sun-baked vehicles towing fully-laden trailers up long inclines in blistering 50°C heat, Ford Ranger has been pushed to extremes.



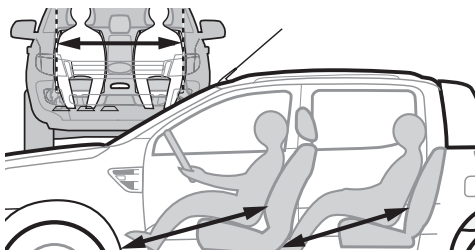
Some cargo wants to know if you’re there yet

Ford Ranger is designed to offer a car-like driving experience for the driver and passengers; a comforting thought when you’re transporting your most precious cargo.



“It’s great to feel as comfortable and protected in a pick-up as I would in a car.”

Main image shows a Ford Ranger Double Cab Limited 4x4 with Moondust Silver metallic paint (option).



Generous leg and shoulder room
Ample space for the driver and four adult passengers to stretch out in comfort is proof of Ford Ranger’s work- and family-friendly interior.



Intelligent Protection System (IPS)

Beneath Ford Ranger’s steel safety cage lies a fully comprehensive multi-airbag system, three-point seat belt pre-tensioners and collapsible steering column and pedals. All designed to spring into action in a fraction of a second.

The Ford Ranger IPS includes:

- 1. Driver’s and front passenger’s airbags*
- 2. Driver’s and front passenger’s side impact airbags
- 3. Side curtain airbags for first- and second-row seats
- 4. Driver’s knee bolster airbag
- 5. Pre-tensioners, load-limiting retractors and height-adjustable mounts on front seat belts
- 6. Collapsible steering column and pedals
- 7. Robust computer-optimised body structure with ultra-rigid safety cell and crumple zones
- 8. Driver’s and front passenger’s belt minder
- 9. Anti-submarining seat bases
- 10. Anti-lock braking system (ABS) with electronic brake-force distribution (EBD), Emergency Brake Assist (EBA) and Load Adaptive Control (LAC) – included with ESP

*Note: A child seat should never be placed in the front passenger seat when the Ford vehicle is equipped with an operational front passenger’s airbag. The safest place for children is properly restrained on the second-row seats.



Side curtain airbags

Deploy at head level, and are designed to help protect the driver and passengers from injury caused by the side windows.



Driver’s knee bolster airbag

Designed to help prevent injuries through contact with the steering column.



Collapsible steering column and pedals

Designed to collapse in a frontal impact to help reduce possible injuries to the driver.



Anti-lock braking system (ABS)

Designed to prevent the wheels from locking up under heavy braking, helping to maintain steering control in an emergency.

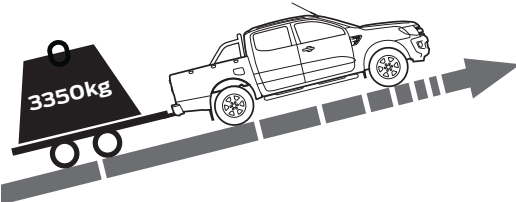
Helping to stay on the straight and narrow

Trailer sway can be dangerous. That’s why Ford Ranger comes with sophisticated Electronic Stability Programme (ESP) – with innovative Trailer Sway Control technology as standard.



“My Ranger is so powerful and stable, I have to keep reminding myself that I’m pulling a trailer.”

Main image shows a Ford Ranger Double Cab Wildtrak 4x4 with Wildtrak Orange metallic paint (option).



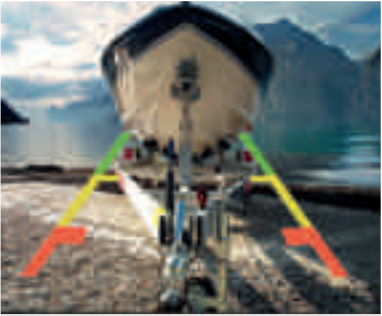
Superb towing ability

With up to 3350 kg maximum towing capacity (4x4s with a braked trailer), Ford Ranger offers some serious pulling power. (Commercial users may need a digital tachograph. A fitting kit is available from your Ford Dealer).



Electronic shift-on-the-fly

Change from two-wheel drive to four-wheel drive – and back again – at the press of a button when you're on the move.



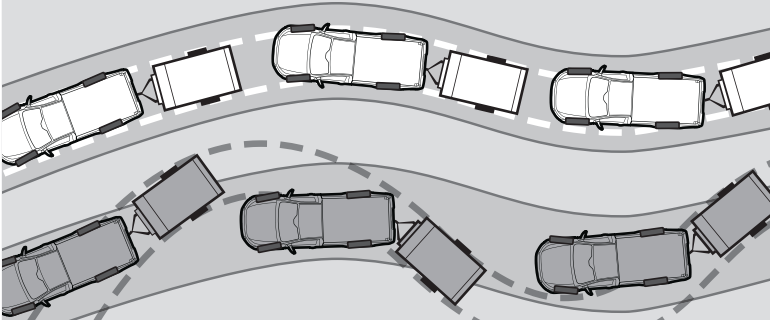
Rear-view camera

Select reverse and the image from the rear-view camera comes on automatically in the rear-view mirror. Marker lines overlaid on the camera image indicate where the vehicle is heading based on steering angle. (Standard on Wildtrak only)

Electronic Stability Programme (ESP)

Incorporating four-wheel traction control and yaw control – and calibrated to work equally well both on- and off-road – ESP includes the following additional features designed to enhance vehicle stability and control

- **Traction Control System (TCS)**
Designed to help you maintain drive in difficult conditions with three selectable control settings.
- **Hill Start Assist**
Designed to help prevent you from rolling back when starting on an uphill slope by keeping the brakes applied until the vehicle starts to move.
- **Hill Descent Control**
Designed to help regulate your downhill speed in off-road conditions.
- **Load Adaptive Control (LAC)**
Designed to adjust the responses of the ESP system to compensate for when the vehicle is unladen, partially- or fully-laden.
- **Emergency Brake Assist (EBA)**
Designed to prepare the brakes to facilitate full braking performance by increasing pressure within the brake system when braking in an emergency.
- **Emergency Brake Warning**
The hazard warning lights automatically flash during emergency braking.
- **Roll-over mitigation**
Designed to identify a potentially dangerous driving situation, and activate the ESP to restore stability.
- **Trailer Sway Control**
When it detects trailer sway, the system is designed to reduce engine torque and apply the brakes to each wheel to help restore control (see below).



Communication: the key to every successful relationship

You've got to stay in touch if you're going to stay ahead in business. That's why we've made some of the latest communications and satnav technology available on Ford Ranger.



Voice Control System

This technology lets you control your Bluetooth®-compatible mobile phone, audio, SD navigation and air conditioning systems with the sound of your voice. (Standard on XLT, Limited and Wildtrak)

“I need to be in touch 24/7, and know exactly where I’m going.”

Main image shows a Ford Ranger Double Cab Wildtrak with Wildtrak Orange metallic paint (option).

Note The Bluetooth® word mark and logos are owned by the Bluetooth SIG, Inc. and any use of such marks by Ford Motor Company Limited and its associated companies is under licence. Other trademarks and trade names are those of their respective owners.



Bluetooth®-enabled audio streaming

Lets you stream music from your Bluetooth®-enabled mobile phone and play it through your audio system, as well as control your mobile device. You can also access the phone book and recent calls. (Standard on XLT, Limited and Wildtrak)



USB port

Built-in USB-connectivity lets you listen to, and operate, your memory stick or USB-enabled digital music player via your Ford Ranger's audio system (standard on XLT, Limited and Wildtrak). A dedicated iPod® connector cable is available (accessory).



Radio CD/SD navigation system with 5" multi-functional display

Features include message centre with map view, acoustic and visual route guidance, RDS-TMC functionality supporting dynamic navigation (TMC constantly broadcasts road traffic information to the navigation unit), SD-card with a full western European map including comprehensive points-of-interest, CD player, and 5" colour multi-functional display. (Standard on Wildtrak)



XL

Ford Ranger XL is a high-tech, hard-working asset to any business, designed to take even the toughest of challenges in its stride.



*Note: A child seat should never be placed in the front passenger seat when the Ford vehicle is equipped with an operational front passenger's airbag. The safest place for children is properly restrained on the second row seats.

Model shown is a Ford Ranger Double Cab XL 4x4 with Sea Grey metallic paint (option).

XL standard features

- 16" steel wheels
- Silver front grille
- Rear mudflaps
- Manual tailgate lock
- Inner DIN-compliant tie-downs
- Ford Easy-Fuel
- 6-speed manual transmission
- Electronic Stability Programme (ESP) with Traction Control and Emergency Brake Assist (EBA)
- Electronic shift-on-the-fly
- Electronic high and low range selection
- Electrically-operated and heated door mirrors
- Electrically-operated front windows with one-shot driver's window
- Theatre-style dimming courtesy lights and illuminated entry
- AUX audio input 3.5 mm jack
- Multi-functional display
- Second power point in instrument panel
- Driver's and front passenger's airbags*, side airbags, side air curtains and driver's knee bolster airbag
- ISOFIX child safety seat attachments (Double Cab only)
- Drive-away door locking (driver configurable)
- Thatcham Cat 1 alarm
- Passive Anti-Theft System (PATS)

Key options

- Air conditioning
- Tow bar with 13 pin Euro Connector with 12V auxiliary supply
- Fleet large nozzle fuel filler (replaces Ford Easy-Fuel, available on XL only)

Ford Easy-Fuel

Prevents filling with the wrong fuel. (Standard)

6-speed manual transmission

Improved fuel economy and faster acceleration from rest when fully laden. (Standard)

Electronic Stability Programme (ESP)

Includes Traction Control and Emergency Brake Assist (EBA). (Standard)

Seven airbags

(Standard)

Lockable tailgate

(Standard)

Drive-away door locking

(Standard)





Cruise control
(Standard)

Automatic headlights
(Standard)

Power-operated and heated mirrors, chrome-effect
(Standard)

Heated windscreen
(Standard)

Autowipers with rain sensor
(Standard)

Multi-functional display
(Standard)



XLT

Ford Ranger XLT builds upon XL's strong foundations with a wealth of extra comfort and convenience features.



Model shown is a Ford Ranger Double Cab XLT 4x4 with Colorado Red solid paint.

In addition to XL

- 16" alloy wheels
- Chrome front grille
- Automatic headlights and autowipers with rain sensor
- Front fog lights
- Chrome-effect door mirror caps and door handles
- Polished stainless steel side steps
- Bed liner with protective side wall
- Heated windscreen
- Air conditioning
- Auto-dimming rear-view mirror
- Overhead console
- Large-style dot matrix multi-function display
- Cruise control
- Bluetooth® hands-free phone with Voice Control System and USB interface
- USB and Bluetooth® audio streaming
- Leather-wrapped steering wheel with remote audio controls
- 4-way driver's seat with lumbar support
- Ambient lighting
- Floor mats

Key options

- Tow bar with 13 pin Euro Connector with 12V auxiliary supply



Dual-zone Electronic Automatic Temperature Control (DEATC) air conditioning
(Standard)

Parking distance sensors
(Standard)

8-way electrically-adjustable driver's seat with lumbar support
(Standard)

Limited

Ford Ranger Limited comes with a comprehensive equipment specification that is the equal of many prestige passenger cars.



Model shown is a Ford Ranger Double Cab Limited 4x4 with Ocean metallic paint (option).

In addition to XLT

- 17" alloy wheels
- Chrome surround wing grille with side indicators
- Chrome-plated steel rear step bumper
- C-channel tie-down system
- Privacy glass
- Power-foldable door mirrors with puddle lights and side turn indicators
- Coolbox in centre console
- Dual-zone Electronic Automatic Temperature Control (DEATC) air conditioning
- Large-style colour multi-function display
- 'Ranger' floor mats
- 8-way electrically-adjustable heated driver's seat with lumbar support
- Leather seat trim
- Parking distance sensors

Key options

- Tow bar with 13 pin Euro Connector with 12V auxiliary supply
- Satellite Navigation inc. rear view camera and 5" full colour screen

C-channel tie-down system
(Standard)

Step bumper
(Standard)

Large-style colour multi-function display
(Standard)





Colour satellite navigation
(Standard)

Rear-view camera
(Standard)

18" machined alloy wheels
(Standard)

Wildtrak

Ford Ranger Wildtrak is a monument to bold styling and leading-edge driving technology.



Model shown is a Ford Ranger Double Cab Wildtrak 4x4 with Wildtrak Orange metallic paint (option).

In addition to Limited

- 18" machined alloy wheels
- Titanium front grille
- Power-foldable mirrors with black-painted housings and side turn indicators
- Body-colour front bumper with sports black highlighting
- Painted steel rear step bumper
- Polished stainless steel side bars
- Black door and tailgate handles
- Aluminium-effect roof rails
- Aerodynamic sports bar
- Wing grille with 'Wildtrak' logo
- Colour satellite navigation
- Rear-view camera
- 'Ice Blue' ambient interior lighting with dimming control
- Leather-wrapped steering wheel with 'Wildtrak' stitching
- 'Wildtrak' floor mats
- 'Wildtrak' seat trim

Key options

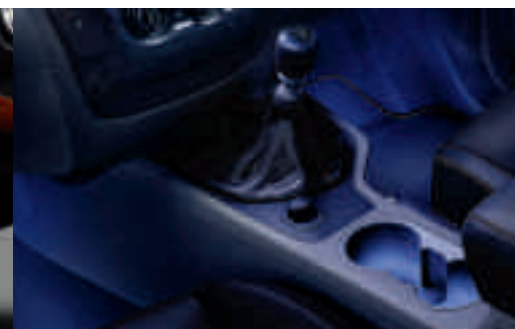
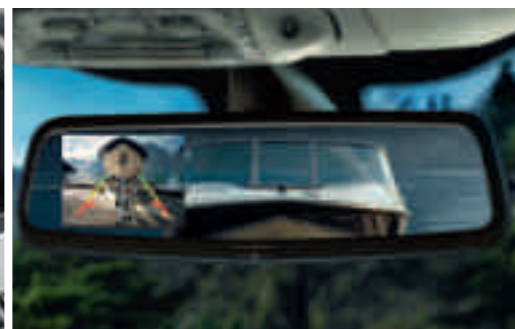
- Lockable roll cover*
- Tow bar with 13 pin Euro Connector with 12V auxiliary supply

*Manufactured by Edstrom. Available early 2012. Please note that supplier-branded accessories are supplied with a supplier's warranty and are subject to the supplier's warranty terms. Such accessories are, therefore, excluded from the Ford warranty.

'Ice Blue' ambient interior lighting with dimming control
(Standard)

'Wildtrak' logo
(Standard)

Integrated roll and lock load box cover*
(Option)



The range

With a superb choice of bodystyles, series and engines – plus two-wheel drive and four-wheel drive – there’s a Ford Ranger to meet every need.

XL

XL features include

- 6-speed manual transmission
- Electronic shift-on-the-fly
- Electronic Stability Programme (ESP)
- Ford Easy-Fuel
- Electrically-operated front windows with one-shot driver’s window
- AUX audio input 3.5 mm jack
- Electrically-operated and heated door mirrors

Bodystyles

- Regular Cab 4x2 and 4x4
- Regular Chassis Cab 4x4
- Super Cab 4x2 and 4x4
- Double Cab 4x4

Diesel engines

- 2.2 Duratorq TDCi 125 PS, 6-speed manual**
- 2.2 Duratorq TDCi 150 PS, 6-speed manual

XLT

In addition to XL

- 16" alloy wheels
- Heated windscreen
- Power-operated and heated mirrors, chrome-effect
- Bluetooth® hands-free phone with Voice Control System and USB interface
- Steering wheel-mounted audio controls
- Cruise control

Bodystyles

- Super Cab 4x4
- Double Cab 4x4

Diesel engine

- 2.2 Duratorq TDCi 150 PS, 6-speed manual

Limited

In addition to XLT

- 17" alloy wheels
- 8-way electrically-adjustable driver’s seat with lumbar support*
- Power-foldable door mirrors with puddle lights
- Dual-zone Electronic Automatic Temperature Control (DEATC) air conditioning
- Large-style colour multi-function display
- Parking distance sensors

Bodystyles

- Super Cab 4x4
- Double Cab 4x4

Diesel engines

- 2.2 Duratorq TDCi 150 PS, 6-speed manual and optional 6-speed automatic
- 3.2 Duratorq TDCi 200 PS 6-speed manual

Wildtrak

In addition to Limited

- 18" machined alloy wheels
- Colour satnav
- Rear-view camera
- ‘Ice Blue’ ambient interior lighting with dimming control

Bodystyles

- Double Cab 4x4

Diesel engine

- 3.2 Duratorq TDCi 200 PS, 6-speed manual and optional 6-speed automatic

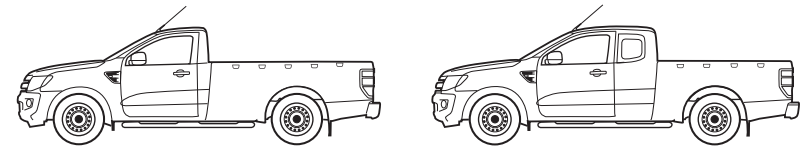


Models shown are (left) Ford Ranger Regular Cab XL 4x4 in Moondust Silver (option), (centre) Ford Ranger Super Cab 4x4 XLT in Thunder (option) and (right) Ford Ranger Double Cab Limited 4x4 in Panther Black (option).

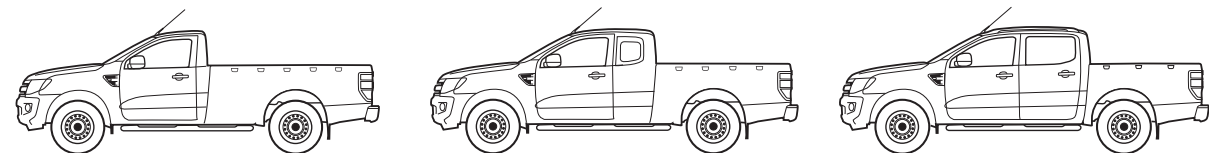
*Double Cab only

**Single Cab available from early 2012, Double Cab available from mid 2012

4x2



4x4



Duratorq diesel engines

The 2.2-litre Duratorq TDCi diesel engine uses variable geometry turbochargers for increased power (150 PS) and torque (375 Nm). The new 5-cylinder 3.2-litre Duratorq TDCi diesel provides 200 PS and maximum torque of 470 Nm, with 90 per cent of this impressive pulling power available from 1,700 to 3,500 rpm.

TDCi Stage V engines

These highly fuel-efficient engines use advanced technology – including a coated diesel particulate filter (cDPF), a new Exhaust Gas Recirculation (EGR) valve, low voltage metallic glow plugs and Variable Flow Oil Pump (VFOP) – to meet stringent EU Stage V emissions standards.

Making life easy

Our range of finance, insurance, service and assistance options is designed with just one thing in mind – making life easy for you.

Ford Credit

When it comes to financing your Ford Vehicle, our size and expertise means we're well placed to provide you with a range of finance plans. An application for finance is straightforward and you'll usually get a decision within 15 minutes.

So what can your Ford Dealer provide?

Ford Acquire is ideal if you're a private or business user who wants a traditional and convenient financing plan to own your vehicle. Simply put down a deposit, pay the remainder, plus interest, over an agreed period and the vehicle becomes yours.

Ford Lease* provides simple, tailored funding solutions for your business, whatever the size. Business users only.

Ford Insure** is our comprehensive motor insurance product, designed specifically for Ford drivers.

For more information on our finance products please visit **ford.co.uk**.

Finance subject to status. Guarantees/Indemnities may be required. Freepost Ford Credit.

*Ford Lease is provided by ALD Automotive Ltd, trading as Ford Lease, Oakwood Park, Lodge Causeway, Fishponds, Bristol, BS16 3JA. ALD Automotive is registered in England No. 987418. For the purposes of the Data Protection Act 1998 the data controllers in relation to any information you supply are Ford Motor Company Limited, FCE Bank Plc and ALD Automotive. Finance subject to status. Guarantees and indemnities may be required. ALD Automotive is authorised and regulated by the Financial Services Authority.

**Ford Insure is underwritten and administered by Royal & Sun Alliance Insurance plc, which is authorised and regulated by the Financial Services Authority. FCE Bank plc is authorised and regulated by the Financial Services Authority and acts as an insurance intermediary in relation to Ford Insure. In relation to this same product, Ford Motor Company Limited is an appointed representative of FCE Bank plc. Ford Motor Company Limited acts as an insurance intermediary. Calls may be recorded and monitored.

Services

There are 222 Sales and 245 Aftersales Ford Transit Specialist Dealers across the UK, equipped and trained to meet Commercial Vehicle customer requirements. From these, 113 Sales and 95 Aftersales Dealers have achieved the 'Backbone standard' as recognition of their total commitment to delivering dedicated and professional sales and service support.

To find the location of your nearest Ford Transit Specialist Dealer, simply call the Ford Information Service on 0845 7111 888, or visit the Ford Dealer locator at **www.fordvans.co.uk**

Ford Protect Every new Ford Fiesta Van is protected by a 3-year/60,000-mile Ford Protect Classic Warranty Plan, and also comes with a 1-year Ford Assistance package.

Ford Ranger is protected by a 3-year/60,000 mile Ford Protect Classic Warranty Plan.

Ford Transit and Transit Connects are protected by a 3-year/100,000-mile bumper-to-bumper warranty.

Ford Transit Chassis Cab One-Stop bodywork is covered by a 3-year/100,000-mile warranty and a 3-year Perforation Warranty provided by the bodywork supplier.

Ford Perforation Warranty All New Ranger and Fiesta Van are covered by the Ford Perforation Warranty for 12 years from the date of first registration. Ford Transit, Ford Transit Connect and Tourneo Connect are covered for 8 years from the date of first registration. Subject to terms and conditions. Please see your Ford Transit Specialist Dealer for details.

Ford Assistance Ford Transits, Transit Connects and Rangers are supplied with a minimum of a 1-year Ford Assistance roadside package. Further details are available either on **www.ford.co.uk** or from your local Ford Dealer.

Ford Rapid Fit Our 'no appointments necessary, while-you-wait' fast-fit service for exhausts, brakes, batteries and more, at over 240 sites nationally.

Ford Accident Repair Centres Approved Ford Accident Repair Centres meet rigorous Ford standards and are the best place to return your vehicle to its pre-accident condition.

Contacts

Ford Customer Relationship Centre In the unlikely event that your Ford Dealer can't help you or if you need to speak to us directly, call 0845 841 1111 at local rates.

Ford Rental – local service nationwide Car and van rental from our latest model range. Contact your local Ford Dealer for more information.

Talkback – the company car drivers' club This is your club for extended test drives, special events, and advice on tax and buying issues. Join free, even if you don't drive a Ford, on **www.talkbackclub.com** or call 0845 605 55 66.

Ford Mobility Our MAGIC care centre provides free information on all motoring and mobility issues, including special offers for HRDLA and Motability recipients. Call free on 0800 240 241.

*Subject to terms and conditions.

Ford EConetic Technology

The Ford EConetic Technology initiative is designed to reduce the cost of running your vehicle through improved fuel economy and lower CO₂ emissions without compromising on style, performance or driving quality.

Affordable and available now

Significant advances in the efficiency of our engines and other innovations such as those shown below combine to help improve performance and fuel economy, and help you to adjust your driving style to achieve further savings*. Many of these technologies have been combined in the Ford Transit EConetic model, which achieves an impressive 173 g/km CO₂ with no loss of capacity or performance. The scope of the Ford EConetic Technology initiative has recently been expanded to include electric, hybrid-electric and plug-in hybrid-electric vehicles, as well as company-wide sustainability programmes.

Creating a cleaner tomorrow

At Ford, we've been quietly getting on with the job of reducing our impact on the environment. For example, solar/photovoltaic panels on the roof of our Bridgend engine plant in Wales generate enough power to light an area of around 10,000 square metres, and to reduce landfill, almost 300 parts used in Ford vehicles manufactured in Europe are made from recycled non-metallic materials – potentially avoiding 17,000 tonnes of waste every year.

If you would like to know more, logon to: **www.ford.co.uk/FordEConeticTechnology**

*The availability of Ford EConetic Technology varies by model in the Ford commercial vehicle range. Please ask your Ford Dealer for details

Smart Regenerative Charging

Helps keep the battery charged in the most efficient way – reducing the amount of fuel used.

Ford Auto-Start-Stop

Automatically switches off the engine when you come to a halt and restarts smoothly when you want to move off, reducing fuel consumption and CO₂ emissions by up to ten per cent.

New Duratorq TDCi Stage V engines

Engineered to meet stringent EU Stage V emissions standards, these highly fuel-efficient engines are offered with an impressive choice of power and torque outputs.

Shift Indicator

A light in the instrument cluster tells you when to shift gears, helping you to use less fuel while also encouraging a smoother driving style (available on all diesel models).

Specifications

Manoeuvrability

| | | Regular Cab 4x2 | Regular Cab 4x4 | Super Cab 4x2 | Super Cab 4x4 | Double Cab 4x4 |
|---|-----------------------------------|--------------------|--------------------|------------------|------------------|-------------------|
| A | Ground clearance (unladen) – mm | 229 | 229 | 229 | 229 | 229 |
| B | Angle of approach (unladen) | – | 28 | – | 28 | 28 |
| C | Angle of departure (unladen) | – | 28 | – | 28 | 28 |
| | Ramp breakover angle (4x4 only) | – | 25 | – | 25 | 25 |
| E | Wading depth – mm | 600 | 800 | 600 | 800 | 800 |
| | Turning circle – m (kerb to kerb) | 12.0 | 12.7 | 12.0 | 12.7 | 12.7 |

Dimensions

| | Regular Cab 4x2 | Regular Cab 4x4 | Super Cab 4x2 | Super Cab 4x4 | Double Cab 4x4 |
|--------------------------------|--------------------|--------------------|------------------|------------------|-------------------|
| Exterior mm | | | | | |
| Overall length | 5274 | 5274 | 5359 | 5359 | 5359 |
| Overall width | 1850 | 1850 | 1850 | 1850 | 1850 |
| Overall height (unladen) | 1703 | 1703 | 1706 | 1706 | 1815 |
| Track front | 1590 | 1560 | 1590 | 1560 | 1560 |
| Track rear | 1590 | 1560 | 1590 | 1560 | 1560 |
| Wheelbase | 3220 | 3220 | 3220 | 3220 | 3220 |
| Load box length (at floor) | 2317 | 2317 | 1847 | 1847 | 1560 |
| Load box width (at floor) | 1560 | 1560 | 1560 | 1560 | 1560 |
| Load box depth | 511 | 511 | 511 | 511 | 511 |
| Loadspace between wheel arches | 1139 | 1139 | 1139 | 1139 | 1139 |
| Loading height (unladen) | 724 | 835 | 724 | 835 | 835 |
| Interior mm | | | | | |
| Front | | | | | |
| Effective headroom | 1024 | 1024 | 1024 | 1024 | 1022 |
| Maximum effective leg room | 1058 | 1058 | 1058 | 1058 | 1058 |
| Rear | | | | | |
| Effective headroom | | | 938 | 938 | 975 |
| Maximum effective leg room | | | 796 | 796 | 902 |

All dimensions are subject to manufacturing tolerances and refer to minimum specification models and do not include additional optional equipment.

Engine data

| Drive | Euro Stage | Maximum power ^a | Maximum torque ^b | Regular Cab XL 4x2 and 4x4 | Super Cab XL 4x2 and 4x4 | Super Cab XLT 4x4 | Super Cab Limited 4x4 | Double Cab XL 4x4 | Double Cab XLT 4x4 | Double Cab Limited 4x4 | Double Cab Wildtrak 4x4 |
|--|------------|---|--|-------------------------------|-----------------------------|----------------------|--------------------------|----------------------|-----------------------|--------------------------------------|--------------------------------------|
| 2.2 Duratorq TDCi ¹⁾ 2198 cc | Stage V | 92 kW (125 PS) | 330 Nm | 6 speed manual | | | | 6 speed manual | | | |
| 2.2 Duratorq TDCi 2198 cc | Stage V | 110 kW (150 PS) at 3700 min ⁻¹ (rpm) | 375 Nm at 1500 min ⁻¹ (rpm) | 6 speed manual ²⁾ | 6 speed manual | 6 speed manual | 6 speed manual | 6 speed manual | 6 speed manual | 6 speed manual optional 6 speed auto | |
| 3.2 Duratorq TDCi 3127 cc | Stage V | 147 kW (200 PS) at 3000 min ⁻¹ (rpm) | 470 Nm at 2750 min ⁻¹ (rpm) | | | | | | | 6 speed manual | 6 speed manual optional 6 speed auto |

^aTested in accordance with SAE J1349. ^bSingle Cab available for January 2012 production. Double Cab available for ordering early 2012 with mid 2012 production. ²⁾Only available in 4x4.

Model availability, weights and loads

| | Payload Net ^a | Payload Gross ^{aa} | Front Axle plated mass | Rear Axle plated mass | Gross Vehicle Mass (kg) | Kerb weight (kg)* | Rear axle ratio | Max. Trailer Weight Braked (Unbraked) | Max. GTM (kg) |
|--|--------------------------|-----------------------------|---------------------------|--------------------------|----------------------------|----------------------|--------------------|---|---------------------|
| Regular Cab | | | | | | | | | |
| 2.2 Duratorq TDCi (125 PS (92 kW)) 4x2 ¹⁾ | 1107 | 1182 | 1325 | 1755 | 2925 | 1743 | 3.31 | 2500 (750) | 5125 |
| 2.2 Duratorq TDCi (125 PS (92 kW)) 4x4 ¹⁾ | 1265 | 1340 | 1480 | 1850 | 3200 | 1860 | 3.31 | 2500 (750) | 5400 |
| 2.2 Duratorq TDCi (150 PS (110 kW)) 4x4 | 1234 | 1309 | 1480 | 1850 | 3200 | 1891 | 3.55 | 3350 (750) | 5950 |
| Super Cab (inc XLT and Limited) | | | | | | | | | |
| 2.2 Duratorq TDCi (150 PS (110 kW)) 4x2 | 1015 | 1090 | 1325 | 1755 | 2925 | 1835 | 3.31 | 2500 (750) | 5425 |
| 2.2 Duratorq TDCi (150 PS (110 kW)) 4x4 | 1179 | 1254 | 1480 | 1850 | 3200 | 1946 | 3.55 | 3350 (750) | 5950 |
| Double Cab (inc XLT, Limited and Wildtrak) | | | | | | | | | |
| 2.2 Duratorq TDCi (125 PS (92 kW)) 4x4 ²⁾ | tbc | tbc | tbc | tbc | tbc | tbc | tbc | tbc | tbc |
| 2.2 Duratorq TDCi (150 PS (110 kW)) 4x4 | 1077 | 1152 | 1480 | 1850 | 3200 | 2048 | 3.55 | 3350 (750) | 5950 |
| 2.2 Duratorq TDCi (150 PS (110 kW)) 4x4 Automatic | 1062 | 1137 | 1480 | 1850 | 3200 | 2063 | 3.73 | 3350 (750) | 5950 |
| 3.2 Duratorq TDCi (200 PS (147 kW)) 4x4 | 1052 | 1127 | 1480 | 1850 | 3200 | 2073 | 3.55 | 3350 (750) | 5950 |
| 3.2 Duratorq TDCi (200 PS (147 kW)) 4x4 Automatic | 1042 | 1117 | 1480 | 1850 | 3200 | 2083 | 3.73 | 3350 (750) | 5950 |

^a**Payload Net** = Gross vehicle mass, less kerbweight, less allowance of 75 kg for driver. ^{aa}**Payload Gross** = Gross vehicle mass, less kerbweight. **GVM** = Gross vehicle mass. The total permissible all-up weight of a rigid vehicle – i.e. with body, payload, ancillaries, fuel, oil, water, driver and crew. ***Kerbweight** = The weight of the complete vehicle and all equipment including fuel and water, but without the payload, driver or any crew. All kerb masses quoted in this brochure are subject to manufacturing tolerances and are for Base models with minimum equipment. XLT, Thunder and Wildtrak models will have greater kerb masess and, therefore, lower payloads due to the increased amount of standard equipment. Any additional options specified on the vehicle will reduce the payload accordingly. **GTM** = Gross train mass. The total permissible all-up weight of a rigid vehicle (see GVM) together with its trailer and load. Trailers of the above capacities should only be used within the plated GTM limits. Dependent on the driveline combination and payload carried by the prime mover, it may not be possible to tow trailers of the maximum capabilities mentioned. The gross mass of the trailer should be equal to, or less than, the prime mover when being towed. A tachograph may be required for towing. ¹⁾Available for January 2012 production. ²⁾Available for ordering early 2012 with mid 2012 production.

Specifications

Mechanical features

| | Regular Cab XL | Super Cab XL | Super Cab XLT | Super Cab Limited | Double Cab XL | Double Cab XLT | Double Cab Limited | Double Cab Wildtrak |
|---|----------------|--------------|---------------|-------------------|---------------|----------------|--------------------|---------------------|
| Brakes | | | | | | | | |
| Hydraulic, with vacuum servo-assistance and load apportioning valve | ● | ● | ● | ● | ● | ● | ● | ● |
| Ventilated front discs. Rear drums | ● | ● | ● | ● | ● | ● | ● | ● |
| 4-wheel anti-lock brakes and ESP (Electronic Stability Program) | ● | ● | ● | ● | ● | ● | ● | ● |
| Fuel tank | | | | | | | | |
| 80 litres | ● | ● | ● | ● | ● | ● | ● | ● |
| Steering | | | | | | | | |
| Power-assisted | ● | ● | ● | ● | ● | ● | ● | ● |
| Steering column – Rake and reach adjustable | ● | ● | ● | ● | ● | ● | ● | ● |
| Suspension | | | | | | | | |
| Front – Independent double wishbone with torsion bar, tubular double-acting shock absorbers and anti-roll bar | ● | ● | ● | ● | ● | ● | ● | ● |
| Rear – “Berlin eye” with leaf springs, double-acting shock absorbers | ● | ● | ● | ● | ● | ● | ● | ● |
| Remote Free Wheel System (RFW) (4x4 only) | ● | ● | ● | ● | ● | ● | ● | ● |

● = Standard, ⇨ = Option, at extra cost.

Safety and security

| | Regular Cab XL | Super Cab XL | Super Cab XLT | Super Cab Limited | Double Cab XL | Double Cab XLT | Double Cab Limited | Double Cab Wildtrak |
|---|----------------|--------------|---------------|-------------------|-----------------|-----------------|--------------------|---------------------|
| Safety | | | | | | | | |
| Anti-lock brakes – Electronic, 4-wheel | ● | ● | ● | ● | ● | ● | ● | ● |
| Electronic Stability Programme (ESP) with Emergency Brake Light (EBL), Cornering Brake Control (CBC), Engine Drag Control (EDC), Emergency Brake Assist (EBA), Load Adaptive Control (LAC), Hill Descent Control (HDC) (4x4 only), Hill Start Assist (HSA), Trailer Sway Assist (TSA) and Roll Over Mitigation (ROM). | ● | ● | ● | ● | ● | ● | ● | ● |
| Switchable three stage Traction Control including engine and brake interaction overrides | ● | ● | ● | ● | ● | ● | ● | ● |
| Airbags – Driver’s and front passenger’s | ● | ● | ● | ● | ● | ● | ● | ● |
| Airbags – Side airbags | ● | ● | ● | ● | ● | ● | ● | ● |
| Airbags – Thorax airbags | ● | ● | ● | ● | ● | ● | ● | ● |
| Airbags – Driver’s knee bolster airbag | ● | ● | ● | ● | ● | ● | ● | ● |
| Airbag – Front passenger’s airbag de-activation switch | ● | ● | ● | ● | ⇨ ¹⁾ | ⇨ ¹⁾ | ⇨ ¹⁾ | ⇨ ¹⁾ |
| Beltminder – Driver’s and front passenger’s | ● | ● | ● | ● | ● | ● | ● | ● |
| Side impact door beams, steel safety cage | ● | ● | ● | ● | ● | ● | ● | ● |
| Clear High Mounted Stop Lamp (CHMSL) | ● | ● | ● | ● | ● | ● | ● | |
| Steering column – Collapsible on frontal impact | ● | ● | ● | ● | ● | ● | ● | ● |
| Security | | | | | | | | |
| PATS immobiliser | ● | ● | ● | ● | ● | ● | ● | ● |
| Alarm – Volumetric | ● | ● | ● | ● | ● | ● | ● | ● |
| Locks – Remote locking | ● | ● | ● | ● | ● | ● | ● | ● |
| Locks – Ford Key-Free System (1 flip key and 1 standard key) | ● | ● | ● | | ● | ● | | |
| Locks – Ford Key-Free System (2 flip keys) | | | | ● | | | ● | ● |
| Locks – High security, shielded, strengthened mountings; steering column lock | ● | ● | ● | ● | ● | ● | ● | ● |
| Locks – Child-proof rear | | ● | ● | ● | ● | ● | ● | ● |
| Locks – Auto locking on drive-away, doors automatically lock above a set speed (aprox. 5mph) (Customer configurable) | ● | ● | ● | ● | ● | ● | ● | ● |
| Locks – Tailgate lock | ● | ● | ● | ● | ● | ● | ● | ● |
| Vehicle Identification Number (VIN) – Visible | ● | ● | ● | ● | ● | ● | ● | ● |

● = Standard, ⇨ = Option, at extra cost. ¹⁾Dealer Fit only.

Exterior features

| | Regular Cab XL | Super Cab XL | Super Cab XLT | Super Cab Limited | Double Cab XL | Double Cab XLT | Double Cab Limited | Double Cab Wildtrak |
|--|----------------|--------------|---------------|-------------------|---------------|----------------|--------------------|---------------------|
| Design features | | | | | | | | |
| Door mirrors – Power-operated with black housings, heated | ● | ● | | | ● | | | |
| Door mirrors – Power-operated with chrome-effect housings, heated | | | ● | | | ● | | |
| Door mirrors – Power-operated with chrome-effect housings and side turn indicators, heated | | | | ● | | | ● | |
| Door mirrors – Power-operated with painted housings and side turn indicators, heated | | | | | | | | ● |
| Door mirrors – Power fold with puddle lights | | | | ● | | | ● | ● |
| Door and tailgate handles – Self-colour black | ● | ● | | | ● | | | |
| Door and tailgate handles – Chrome-effect | | | ● | ● | | ● | ● | |
| Door and tailgate handles – Black | | | | | | | | ● |
| Doors – Two cabin side rear doors, outward opening with no B pillar | | ● | ● | ● | | | | |
| Roof rails – Aluminium effect | | | | | | | | ● |
| Front bumper – Black | ● | ● | | | ● | | | |
| Front bumper – Body-colour | | | ● | | | ● | | ● |
| Front bumper – Body-colour with satin insert in lower bumper opening | | | | ● | | | ● | ● |
| Front bumper – Sports black highlighting | | | | | | | | ● |
| Rear bumper – Under-bar, black (4x4 only) | ● | ● | | | ● | | | |
| Rear bumper – Under-bar, chrome | | | ● | | | ● | | |
| Rear bumper – Stepped steel bumper, chrome | | | | ● | | | ● | |
| Rear bumper – Stepped steel bumper, black | | | | | | | | ● |
| Front grille – Silver | ● | ● | | | ● | | | |
| Front grille – Chrome | | | ● | ● | | ● | ● | |
| Front grille – Wildtrak accent | | | | | | | | ● |
| Heated rear window | ● | ● | ● | ● | ● | ● | ● | ● |
| Mudflaps – Front | | | | ● | | | ● | ● |
| Mudflaps – Rear (N/A Chassis cab) | ● | ● | ● | ● | ● | ● | ● | ● |
| Tinted glass | ● | ● | ● | ● | ● | ● | ● | ● |
| Privacy glass – Rear | | | | ● | | | ● | ● |
| Bright-finish on upper door surround | | | | ● | | | ● | |
| Metallic paint | ⇨ | ⇨ | ⇨ | ⇨ | ⇨ | ⇨ | ⇨ | ⇨ |
| Side steps – Polished chrome, full length | | | ● | ● | | ● | ● | ● |
| Sports bar – Chrome, tubular** | | | ⇨ | ● | | ⇨ | ● | |
| Sports bar – Composite aerodynamic | | | | | | | | ● |
| Fender grille with side indicators | ● | ● | ● | | ● | ● | | |
| Fender grille – Chrome surround with logo | | | | ● | | | ● | |
| Fender grille with logo | | | | | | | | ● |
| XLT badge – Tailgate-mounted | | | ● | | | ● | | |
| Limited badge – Side and tailgate-mounted | | | | ● | | | ● | |
| Wildtrak badge – Side and tailgate-mounted | | | | | | | | ● |

Specifications

Exterior features

| | Regular Cab XL | Super Cab XL | Super Cab XLT | Super Cab Limited | Double Cab XL | Double Cab XLT | Double Cab Limited | Double Cab Wildtrak |
|--|----------------|--------------|---------------|-------------------|---------------|----------------|--------------------|---------------------|
| Wheels | | | | | | | | |
| Steel – 16"x6.5 wheels with 215/70 R16C All Terrain tyres (4x2 only) | ● | ● | | | | | | |
| Steel – 16"x7 wheels with 255/70 R16 All Terrain tyres (4x4 only) | ● | ● | | | ● | | | |
| Alloy – 16"x7 wheels with 255/70 R16 All Terrain tyres | | | ● | | | ● | | |
| Alloy – 17"x8 wheels with 265/65 R17 All Terrain tyres | | | | ● | | | ● | |
| Alloy – 18"x8 wheels with 265/60 R18 All Terrain tyres | | | | | | | | ● |
| Locking wheel nuts | | | ● | ● | | ● | ● | ● |
| Convenience features | | | | | | | | |
| Ford Easy-Fuel capless refuelling system with misfuel inhibitor | ● | ● | ● | ● | ● | ● | ● | ● |
| Halogen headlights, side lights, reversing light | ● | ● | ● | ● | ● | ● | ● | ● |
| Headlights – Automatic | | | ● | ● | | ● | ● | ● |
| Front fog lights | | | ● | ● | | ● | ● | ● |
| Rear fog light | ● | ● | ● | ● | ● | ● | ● | ● |
| Daytime running lights | ● | ● | ● | ● | ● | ● | ● | ● |
| Parking distance sensors – Rear | | | | ● | | | ● | ● |
| Rear-view parking camera (displayed on rear-view mirror) | | | | | | | | ● |
| Wipers – Front, speed-sensing intermittent | ● | ● | | | ● | | | |
| Wipers – Automatic with rain sensor | | | ● | ● | | ● | ● | ● |
| Windscreen – Heated front windscreen | | | ● | ● | | ● | ● | ● |
| Tachograph KITAS sensor (4x4 only) | ● | ● | ● | ● | ● | ● | ● | ● |
| Pick-up box | | | | | | | | |
| Pick-up box – Steel, double-skinned, with 2-position drop-down tailgate and taller side walls with slotted inner fenders | ● | ● | ● | ● | ● | ● | ● | ● |
| Tailgate locking | ● | ● | ● | ● | ● | ● | ● | ● |
| Pick-up box – Load rest with folding end stops | ● | ● | ● | ● | ● | ● | ● | |
| Pick-up box – DIN compliant outer tie down hooks* | ● | ● | ● | | ● | ● | | |
| Pick-up box – DIN compliant inner tie down hooks* | ● | ● | ● | ● | ● | ● | ● | ● |
| Pick-up box – Box rail extension with side rail tie downs | | | | | | | | ● |
| Pick-up box – C-channel cargo management tie down system | | | | ● | | | ● | ● |
| Pick-up box – Accessory power socket (12V) | | | | | | | ● | ● |
| High performance bedliner with protective side wall | | | ● | ● | | ● | ● | ● |
| Roll Top lockable cover 'Wildtrak' | | | | | | | | ○ |
| Tow bar with 2t towing (2x2 only; plant-fitted) | ○ | ○ | | | | | | |
| Tow bar with 3.35t towing (4x2 only; plant-fitted) | ○ | ○ | ○ | | ○ | ○ | | |
| Tow bar with 3.35t towing with integrated stepped steel bumper (plant-fitted) | | | | ○ | | | ○ | ○ |

● = Standard, ○ = Option, at extra cost. *Tie-down loops comply with DIN 75410. **Available from Q2 2012.

Interior features

| | Regular Cab XL | Super Cab XL | Super Cab XLT | Super Cab Limited | Double Cab XL | Double Cab XLT | Double Cab Limited | Double Cab Wildtrak |
|---|----------------|--------------|---------------|-------------------|---------------|----------------|--------------------|---------------------|
| Design features | | | | | | | | |
| Centre audio stack bezel – Silver-finish | | | ● | ● | | ● | ● | |
| Centre audio stack bezel – Graphite-finish | | | | | | | | ● |
| Door trim – Cloth insert | ● | ● | | | ● | | | |
| Door trim – Premium fabric insert | | | ● | | | ● | | |
| Door trim – Leather inserts | | | | ● | | | ● | |
| Door trim – Chrome-finish window switches and inner door handles | | | ● | ● | | ● | ● | ● |
| Door trim – Leather inserts with orange stitching | | | | | | | | ● |
| Door trim – Chrome-finish window switches and inner door handles | | | ● | ● | | ● | ● | |
| Floor covering – Vinyl | ● | ● | | | ● | | | |
| Floor covering – Carpeted | | | ● | ● | | ● | ● | ● |
| Floor mats – carpet | | | ● | | | ● | | |
| Floor mats – Premium carpet with 'RANGER' logo | | | | ● | | | ● | |
| Floor mats – Premium carpet with 'Wildtrak' logo | | | | | | | | ● |
| Gearshift knob – Leather-wrapped with satin chrome insert | | | ● | ● | | ● | ● | ● |
| Scuff plates – Polished steel | | | ● | | | ● | | |
| Scuff plates – Chrome-effect, illuminated Ranger logo | | | | ● | | | ● | |
| Scuff plates – Chrome-effect, illuminated Wildtrak logo | | | | | | | | ● |
| Steering wheel – 4-spoke, incorporating horn function with remote audio controls | ● | ● | | | ● | | | |
| Steering wheel – Leather-wrapped with steel graphite inserts with remote audio and cruise controls | | | ● | ● | | ● | ● | |
| Steering wheel – Leather-wrapped with Wildtrak orange stitching and tinted charcoal inserts with remote audio and cruise controls | | | | | | | | ● |
| Audio and communication systems | | | | | | | | |
| Radio/CD with multi-functional display, MP3-compatible CD, 2-line display, two speakers, remote audio controls and AUX connection for external music devices | ● | ● | | | | | | |
| Radio/CD with multi-functional display, MP3-compatible CD, 2-line display, four speakers, remote audio controls and AUX connection for external music devices | | | | | ● | | | |
| Radio/CD with multi-functional display, MP3-compatible, matrix display, six speakers, remote audio controls, AUX and USB connection for external music devices, Bluetooth® Hands-Free Telephone, Bluetooth® audio streaming and Voice Control System | | | ● | | | ● | | |
| Radio/CD with colour multi-functional display, MP3-compatible, 4.2" colour matrix display, six speakers, remote audio controls, AUX and USB connection for external music devices, Bluetooth® Hands-Free Telephone, Bluetooth® audio streaming and Voice Control System | | | | ● | | | ● | |
| Radio/CD navigation system with colour multi-functional display, MP3-compatible, 5" colour matrix display, six speakers, remote audio controls, AUX and USB connection for external music devices, Bluetooth® Hands-Free Telephone, Bluetooth® audio streaming and Voice Control System | | | | ○ | | | ○ | ● |
| Climate control | | | | | | | | |
| Air conditioning – Manual control, CFC-free (4x4 only) | ○ | ○ | ● | | ○ | ● | | |
| Air conditioning – Dual-zone Electronic Automatic Temperature Control (DEATC) | | | ● | | | | ● | ● |

Specifications

Interior features

| | Regular Cab XL | Super Cab XL | Super Cab XLT | Super Cab Limited | Double Cab XL | Double Cab XLT | Double Cab Limited | Double Cab Wildtrak |
|--|----------------|--------------|---------------|-------------------|---------------|----------------|--------------------|---------------------|
| Comfort and convenience | | | | | | | | |
| Instruments – Speedometer, fuel gauge, water temperature gauge and tachometer | ● | ● | ● | ● | ● | ● | ● | ● |
| Instruments – Trip computer (includes distance to empty – avg. fuel economy – instant fuel economy – avg. speed – outside temperature and two trip meters) | ● | ● | ● | ● | ● | ● | ● | ● |
| Warning indicators for oil pressure, direction indicators, water in fuel, high beam, ignition/alternator, brake failure, airbags, glow plugs, free-wheel hubs (4x4 only), rear fog light and 'lights on' audible warning | ● | ● | ● | ● | ● | ● | ● | ● |
| Cruise control (available in conjunction with steering wheel mounted audio controls and driver's airbag) | | | ● | ● | | ● | ● | ● |
| Headlight levelling control | ● | ● | ● | ● | ● | ● | ● | ● |
| Control stalks – Column-mounted for master lights, indicators and wash/wipe functions | ● | ● | ● | ● | ● | ● | ● | ● |
| Accessory power socket (12V) – Front, two | ● | ● | ● | ● | ● | ● | ● | ● |
| Accessory power socket (12V) – Rear, one | | | | ● | | | ● | ● |
| Armrest – Centre console-mounted, with storage box | ● | ● | ● | ● | ● | ● | ● | ● |
| Centre console – Front, double lidded with coin storage box and dual cup holders | ● | ● | ● | ● | ● | ● | ● | ● |
| Centre console – Front cool box with premium lid cover | | | | ● | | | ● | ● |
| Cupholders – Rear | | | | | ● | ● | ● | ● |
| Courtesy light – For front passengers, overhead with theatre-style dimming | ● | ● | ● | ● | ● | ● | ● | ● |
| Overhead console, with map reading lights and sunglasses holder | | | ● | ● | | ● | ● | ● |
| Overhead console, mood lighting | | | | ● | | | ● | ● |
| Ambient lighting with iluminated stowage bin | | | | ● | | | ● | ● |
| Courtesy light – 'Ice Blue' ambient interior lighting with dimming control | | | | | | | | ● |
| Rear-view mirror – Auto-dimming, automatic (electrochromic) | | | ● | ● | | ● | ● | ● |
| Glovebox – Illuminated | ● | ● | ● | ● | ● | ● | ● | ● |
| Grab handle – Front, passenger's side (4x4 only) | ● | ● | ● | ● | ● | ● | ● | ● |
| Storage – Front door pockets | ● | ● | ● | ● | ● | ● | ● | ● |
| Storage – Rear quarter panel pockets | | ● | ● | ● | | | | |
| Storage pocket – Front passenger's seat back | ● | ● | | | ● | | | |
| Storage pocket – Driver's and front passenger's seat back | | | ● | ● | | ● | ● | ● |
| Storage bin – Illuminated | | | ● | ● | | ● | ● | ● |
| Sunvisors – Two with ticket holders on driver's side | ● | ● | ● | ● | ● | ● | ● | ● |
| Sunvisors – Vanity mirror on passenger's side | | | ● | ● | | ● | ● | ● |
| Windows – Electrically-operated, with one-touch lowering/closing and anti-trap feature on driver's door | ● | ● | ● | ● | ● | ● | ● | ● |
| Windows – Rear, electrically-operated with driver's disable switch | | | | | ● | ● | ● | ● |

Interior features

| | Regular Cab XL | Super Cab XL | Super Cab XLT | Super Cab Limited | Double Cab XL | Double Cab XLT | Double Cab Limited | Double Cab Wildtrak |
|---|----------------|--------------|---------------|-------------------|---------------|----------------|--------------------|---------------------|
| Seats and seat belts | | | | | | | | |
| Front seats – Driver's manual height and tilt adjustment, with lumbar support adjustment and with height-adjustable head restraints | ● | ● | ● | ● | ● | ● | | |
| Front seats – Driver's electric height, fore/aft, backrest angle and tilt adjustment (includes lumbar support adjustment) | | | | | | | ● | ● |
| Front seat – Heated driver and passenger | | | | | | | ● | ● |
| Rear seats – Jump | | ● | ● | ● | | | | |
| Rear seats – Three across seating with height-adjustable head restraints and centre armrest | | | | | ● | ● | ● | ● |
| Seats – Cloth trim | ● | ● | ● | | ● | ● | | |
| Seats – Leather trim | | | | ● | | | ● | ● |
| Seat belts – Front, 3-point (ELR) with pre-tensioners and load-limiters | ● | ● | ● | ● | ● | ● | ● | ● |
| Seat belts – Front, driver and passenger's D-ring shoulder adjustable | | | | | ● | ● | ● | ● |
| Seat belts – Rear, two 3-point (ELR) diagonal inertia reel with grabbers | | ● | ● | ● | | | | |
| Seat belts – Rear, three 3-point (ELR) diagonal inertia reel with grabbers | | | | | ● | ● | ● | ● |
| Rear seat – ISOFIX | | | | | ● | ● | ● | ● |

● = Standard, ◐ = Option, at extra cost

Colour and trim

Choosing the colour and trim for your Ford Ranger is an opportunity to make it just exactly that – yours!



Solid body colours

- 1 Colorado Red¹⁾
- 2 Frozen White

Metallic body colours*

- 3 Ocean¹⁾
- 4 Moondust Silver
- 5 Thunder¹⁾
- 6 Performance Blue¹⁾
- 7 Sea Grey
- 8 Panther Black
- 9 Copper Red¹⁾
- 10 Wildtrak Orange²⁾

*Metallic body colours are options at extra cost.
¹⁾Not offered on Wildtrak.
²⁾Wildtrak only.
The Ford Ranger is covered by the Ford Perforation Warranty for 12 years from the date of first registration. Subject to terms and conditions.
Note The car images used are to illustrate body colours only and may not reflect current specification. Colours and trims reproduced within this brochure may vary from the actual colours, due to the limitations of the printing processes used.

| | | |
|---|---|---|
| | | |
| XL Limewire fabric in River Rock (seat insert) Pulse fabric in River Rock (seat bolster) | XLT Catalyst fabric in River Rock (seat insert) Catalyst fabric in River Rock (seat bolster) | Limited Soho Grain leather in River Rock (seat insert) Ford Mini perforated over Soho in River Rock (seat bolster) |

Specifications

Colour and trim

| Model | XL | XLT | Limited | Wildtrak |
|--------------------------------------|-------------------------------|-------------------------------|--|--------------------------------|
| Seat facing trim and colour | Limewire fabric in River Rock | Catalyst fabric in River Rock | Soho Grain leather in River Rock | Journey Grain leather in Ebony |
| Seat bolster trim and colour | Pulse fabric in River Rock | Catalyst fabric in River Rock | Ford Mini perforated over Soho in River Rock | Endurance fabric in Ebony |
| Door trim insert and colour | Foundation Grain in Ebony | Catalyst fabric in River Rock | Foundation Grain in Ebony | Foundation Grain in Ebony |
| Door spear and handle finish | Ebony as moulded | Satin Alloy paint | Satin Alloy paint | Tinted Charcoal paint |
| Instrument panel colour: Upper/Lower | River Rock/Basalt | River Rock/Basalt | River Rock/Basalt | River Rock/Basalt |
| Solid body colours | | | | |
| Colorado Red | ● | ● | ● | – |
| Frozen White | ● | ● | ● | ● |
| Metallic body colours* | | | | |
| Moondust Silver | ● | ● | ● | ● |
| Thunder | ● | ● | ● | – |
| Performance Blue | ● | ● | ● | – |
| Ocean | ● | ● | ● | – |
| Copper Red | ● | ● | ● | – |
| Wildtrak Orange | – | – | – | ● |
| Sea Grey | ● | ● | ● | ● |
| Panther Black | ● | ● | ● | ● |

*Metallic paint is an option, at extra cost.

Wildtrak

Journey Grain leather in Ebony (seat insert)
Endurance fabric in Ebony





MY 2011.5 GBR EN

Illustrations, descriptions and specifications. This brochure was correct at the time of going to print. However, Ford policy is one of continuous product development. The right is reserved to change specifications, colours and prices of the models and items illustrated and described in this publication at any time. For the latest details always consult your Ford Dealer. **Optional equipment.** Throughout this publication, wherever a feature is described as being an 'Option' or 'Optional Fitment/Pack', etc., you should assume that it will be at extra cost to the base vehicle, unless specifically stated to the contrary. All models and colour combinations are subject to availability. **Note.** Some images portrayed are of a pre-production model and/or are computer generated, therefore, the design/features on the final version of the vehicle may differ in various respects. In addition, some of the features shown on the vehicles may be optional. **Note.** This brochure contains both original Ford accessories as well as a range of carefully selected products from our suppliers, which are featured under their own brands. All supplier branded products are subject to warranty terms defined by the relevant suppliers and do not lie within the responsibility of Ford. **Note.** The Bluetooth® word mark and logos are owned by the Bluetooth SIG, Inc. and any use of such marks by Ford Motor Company is under licence. Other trademarks and trade names are those of their respective owners.



Collect Nectar points at participating Ford Dealers and Authorised Repairers now. So take a look at the latest Ford Service Promotions by visiting the Owner Services section within www.ford.co.uk.



Ford and BP — Working together to reduce fuel consumption and emissions

Published by Ford Motor Company Limited, Brentwood, Essex, England.
Registered in England No. 235446.
FA 1545/4
BJN 307374. FoE H44E.
PN 177510/1111/30m/GBR en.
November 2011.
© Ford Motor Company Limited.

www.ford.co.uk

This addendum varies the above issue of the Ford Ranger brochure, dated November 2011.

- Page 14, 15, 16, 18, 20 and 22: A button with an image suggesting that Ranger is fitted with a differential lock is shown in the images on these pages. This feature is not offered in vehicles sold in the UK.
- Page 14, 15 and 22: The steering wheel spoke inserts are shown as metallic grey. The colour in production vehicles is sports black
- Page 16: The centre bezel is shown as a metallic grey in this image. The colour in production vehicles is ebony (black).
- Page 16: XL model steering wheel is shown with remote audio controls. This feature is not available on the XL model.
- Pages 18 and 20: The centre bezel and steering wheel inserts are shown as a metallic silver colour in this image. The colour in production vehicles is metallic grey, similar to the bezel shown on p16.
- Page 21: The list of specifications for the Limited model includes 'chrome surround wing grille with side indicators'. The side indicators are fitted within the door mirrors, not the wing grilles, on Limited models.
- Page 28: The correct heights of the 4x4 Regular and Super Cab models are 1800mm and 1810mm respectively.
- Page 28: The correct load box length for Double Cab models is 1549mm.
- Page 29: The correct torque output for the 125PS powertrain is 320Nm.
- Page 29: The correct maximum braked towing capacity for the 125PS 4x4 regular cab is 3350kg. All 4x2 models have a max braked towing capacity of 2500kg; all 4x4 models have 3350kg.
- Page 29: The note at the foot of the page stating that “the gross mass of the trailer should be equal to, or less than, the prime mover when being towed” is not applicable to this vehicle. The stated GVM's and towing capacities are validated and correct.
- Page 30: The front suspension is of coil spring design, not torsion bar as stated.
- Page 32: A port for a KITAS sensor is fitted as standard to the All-new Ranger, not a complete KITAS sensor.
- Page 32 and 33: The options Tow Bar and Air Conditioning cannot be ordered on the 2.2 TDCi 125PS Double Cab XL model.
- Page 33: The steering wheel and audio descriptions for XL models include reference to remote audio controls. Remote audio controls are not available on XL models.

Whilst all of the above changes are correct at time of print Customers are advised to check exact Vehicle specifications with their Authorised Ford Dealer prior to placing a vehicle order.



Feel the difference