

FORD **FOCUS**



Go Further

# Go Further

These two words capture the spirit of Ford and our commitment to you. We go further so that you can, too.

1

2-9

## Ford kinetic Design

Ford kinetic Design is the reason why our vehicles look more exciting than ever before. Bold, dynamic lines that create energy in motion.

10-13

## Quality

We design and build your Ford to feel as good after many years of service as it did the day you picked it up. And to drive just as beautifully, too.



14-15

## Green

Using advanced Ford ECONetic Technology, we're committed to creating vehicles with improved fuel economy, reduced CO<sub>2</sub> emissions and a lower overall cost of ownership.



16-17

## Safe

Ford's Intelligent Protection System uses sophisticated technology designed to help prevent an accident and, if one should happen, to protect you.



16-21

## Smart

Cars that park themselves, windscreen wipers that know when it's raining – just some of the many clever solutions from Ford that make life a little easier.



22-35

## Choose your Ford Focus

- Studio
- Edge
- Zetec
- Zetec S
- Titanium
- Titanium X
- ST

36-37

## The range

38-45

## Add those extra touches

- Interior and exterior styling
- Wheels
- Infotainment
- Enhanced versatility

46-55

## Specifying your Ford Focus

56

## Colour and trim

59

## Ownership



"This is a fitting victory for a truly remarkable engine."  
Dean Slavnich, Chairman of the International Engine of the Year Awards



## Start more than a car

Representing the next level of Ford kinetic Design, this is a car that makes its presence known. Whichever way you look at it, the new Ford Focus is impossible to ignore.



Model shown is a Ford Focus Titanium X 5-door in Candy Red metallic paint (option) with 18" 5-spoke alloy wheels (option and accessory).



## Start an adventure

Get ready for the most addictive driving experience, with all the agility and precision you could wish for. It's so much fun to drive, you'll always be craving for more.



Model shown is a Ford Focus Titanium estate in Panther Black metallic paint (option) with 18" 5-spoke alloy wheels (option and accessory).



## Start a serious driving machine

Get serious with the sensational Ford Focus ST. Powered by a 250 PS 2.0-litre EcoBoost engine, and distinguished by unique sports bodystyling, it delivers a performance package that is simply outstanding.



Model shown is a Ford Focus ST3 5-door in Frozen White solid body colour (option) with ST Style Pack (option) and privacy glass (option).



## Start a relationship

The dynamic personality of the new Ford Focus continues inside. The driver-oriented cockpit wraps around you and with the latest technology and features at your fingertips you'll feel completely at one with the car.



Model shown is a Ford Focus Titanium X with Sony Navigation system (Option)





## Proven quality

The attention to detail which has been lavished on the new Ford Focus is immediately evident, from the exterior finish to the quality of the interior. Ford has engineered every single component for dependability and strength with one objective clearly in mind; quality that's built to last.



### Tested to extremes

The new Ford Focus was pushed through the extremes of real-world weather from -40°C to +80°C and tested it over and over again.



### Quality

Not just great to drive, it's great to sit in too, thanks to a leading-edge interior design, high-quality materials and first-class fit and finish.



12,999,976 km  
9,136,765 km  
1,276,765 km  
499,892 km  
245,066 km  
112,907 km  
36,765 km  
24,159 km  
7899 km  
2408 km  
76 km

### Obsessively driven

During its development, we test-drove Ford Focus the equivalent of 88 times around the globe. It's a car you can rely on, right down to the smallest ball bearing.



### 300,000 door shuts

We opened and closed the doors, bonnet and tailgate over 300,000 times in real-world conditions to help ensure they will never let you down.







#### Steering that adapts to its environment

Ford Focus's sophisticated new Electric Power-Assisted Steering (EPAS) achieves a balance that's just not possible with conventional power steering systems. At parking speeds, full power is delivered for feather-light manoeuvring. Once you're on the move, it steadily weights up to just the right extent for optimum feel and control.

\*Availability according to engine/series.

## An addictive driving experience

New Ford Focus combines our latest engine and transmission technology with a dynamic chassis and precise steering. It reminds you how driving can be such a pleasure.



#### Ford PowerShift transmission

Using the very latest gearbox technology, Ford PowerShift perfectly combines the convenience of an automatic and the performance normally associated with a manual. This new 6-speed automatic transmission cleverly selects the next appropriate gear at precisely the right moment for lightning-fast gear changes, with no disruption to the flow of power. Fuel economy is improved, compared to a conventional automatic too. It also has a manual mode that allows you to switch gears at the flick of the shifter, but without the need for a clutch pedal.

<sup>1</sup>54.3 mpg (combined) with 2.0 Duratorq TDCi (163 PS) engine.

V



#### Control Blade independent rear suspension

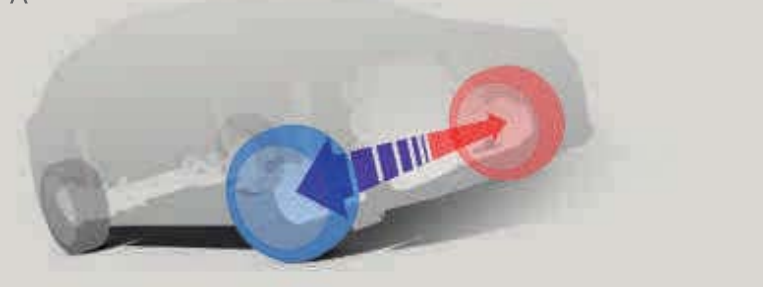
For a smoother ride and more precise handling, this rear suspension system allows each wheel to independently move both upwards and backwards over bumps in the road.



#### Torque Vectoring Control

Designed to improve traction, roadholding and agility when cornering by continuously optimising the engine torque distributed to each front wheel to match the amount of grip each has available. The result is a more rewarding driving experience. (Standard)

^



#### Ford EcoBoost

Ford EcoBoost technology gives you the power of a big engine with the fuel economy and emissions of a small one. The latest ultra-efficient 1.0-litre EcoBoost engine produces an impressive 125 PS, yet it delivers a combined fuel consumption of just 56.5 mpg and CO<sub>2</sub> emissions of only 114 g/km\*.

\*5-door bodystyle.



International Engine of the Year  
Ford 1.0-litre EcoBoost





All electricity needed to power Ford's Dagenham Diesel Centre is provided by three wind turbines, each over 85m high. With a combined maximum output of 5.9MW, they generate over 11.4million KWh of electricity every year, enough to power around 3400 homes.



## What can Ford EONetic Technology do for you?

Ford EONetic Technology is designed to reduce your cost of ownership through improved fuel economy and lower CO<sub>2</sub> emissions, without any compromise on style or driving quality. Much of this technology is brought together in our EONetic models, which deliver some of the lowest fuel consumption and CO<sub>2</sub> emissions in the Ford range. In the near future our EONetic Technology will expand to include electric and hybrid-electric vehicles, biofuel-capable vehicles, plug-in hybrids and hydrogen fuel cell-powered vehicles.



### Ford EONetic Technology

- Ford EcoBoost fuel-efficient petrol engines (see right)
- Ford Duratorq TDCi advanced diesel engines – provide exceptional fuel economy and low CO<sub>2</sub> emissions
- Ford PowerShift dual clutch automatic transmission – combines the efficiency of manual transmission with the convenience of a conventional automatic
- Ford Auto-Start-Stop (see right)
- Ford Smart Regenerative Charging – charges the battery every time you brake
- Ford Electric Power-Assisted Steering – a more efficient system that uses less engine power
- Active Grille Shutter – improves aerodynamics and lowers fuel consumption
- Ford Eco Mode driver information system – shows you when you're achieving optimum fuel efficiency
- Shift Indicator – advises you when to change gear for maximum fuel efficiency

### Ford EcoBoost

With direct petrol injection, turbocharging and variable valve timing, Ford EcoBoost engines are remarkably fuel efficient. For example, the 1.0 EcoBoost 125 PS engine in the Ford Focus produces the same maximum power as the larger capacity 1.6 Duratec Ti-VCT 125 PS, and yet it achieves up to 18 per cent better fuel economy and 16 per cent lower CO<sub>2</sub> emissions.



### Ford Auto-Start-Stop

When your vehicle is idling at a standstill, the engine automatically shuts down to save fuel consumption. When you want to drive off, the engine immediately restarts.



### Electric and Hybrid vehicles

Our electrically-powered vehicles will produce zero emissions. Rechargeable through wall outlets and targeted to get up to 100 miles per charge, they'll be ideal for a daily commute and trips around town. In addition, two next-generation hybrid models are under development.



## Working for a cleaner tomorrow

At Ford, we've been quietly and consistently reducing our impact on the environment. Here are just a few headlines:

- Since 2000, we've reduced manufacturing plant energy consumption by over 27% and CO<sub>2</sub> emissions by 31% worldwide
- Between 2003 and 2008, Ford reduced water consumption in its plants across Europe by 40%
- Solar/photovoltaic panels on the roof of our Bridgend engine plant in the UK generate enough power to light an area of around 10,000 square metres
- Almost 300 parts used in European Ford vehicles are made from recycled non-metallic materials – potentially avoiding 17,000 tonnes of waste going to landfill sites every year

If you wish to know more, logon to:  
[ford.com/go/sustainability](http://ford.com/go/sustainability)



Our Cologne plant utilises hydro-electric power from Norway and Sweden. This reduces CO<sub>2</sub> emissions by 190,000 tonnes a year. Shipping their finished vehicles on Rhine river barges means fewer truck journeys and less fuel consumed to further reduce CO<sub>2</sub> emissions.





# Intelligent protection

New Ford Focus's safety technology is designed to help prevent an accident from occurring, and, if one is unavoidable, to minimise the potential consequences.

## Advanced safety and driver assistance technology

New Ford Focus incorporates many advanced safety technologies that are usually found in larger, more expensive cars. These are designed to protect the driver and passengers, while at the same time helping to make new Ford Focus even more enjoyable to drive.

Having already earned Euro NCAP's maximum five-star overall safety rating, new Ford Focus has now scooped two Euro NCAP Advanced rewards, making Ford the first car in its class to achieve this honour. The coveted rewards, in recognition of Active City Stop<sup>1)</sup> and Lane Keeping Aid<sup>2)</sup>, acknowledge our commitment to design and engineer a vehicle that leads the way in terms of both technology and safety.

## Intelligent Protection System (IPS)<sup>o1)</sup>

Ford Focus's advanced Intelligent Protection System (IPS)<sup>1)</sup> uses a range of sophisticated technologies that are designed to help keep you protected, including an ultra-high strength steel safety cage<sup>1)</sup>, an anti-lock braking system (ABS)<sup>1)</sup> with electronic brake-force distribution (EBD)<sup>1)</sup> and front and curtain airbags<sup>1)</sup>.

### The Ford Focus IPS<sup>1)</sup> includes:

1.

Driver's and front passenger's airbags<sup>1)</sup>\*
2.

Driver's and front passenger's side impact airbags<sup>1)</sup>
3.

Side curtain airbags for front and rear seats<sup>1)</sup>
4.

Collapsible steering column and pedals For optimised protection of driver's legs and feet.
5.

Robust computer-optimised body structure with ultra-rigid safety cell<sup>1)</sup> and crumple zones
6.

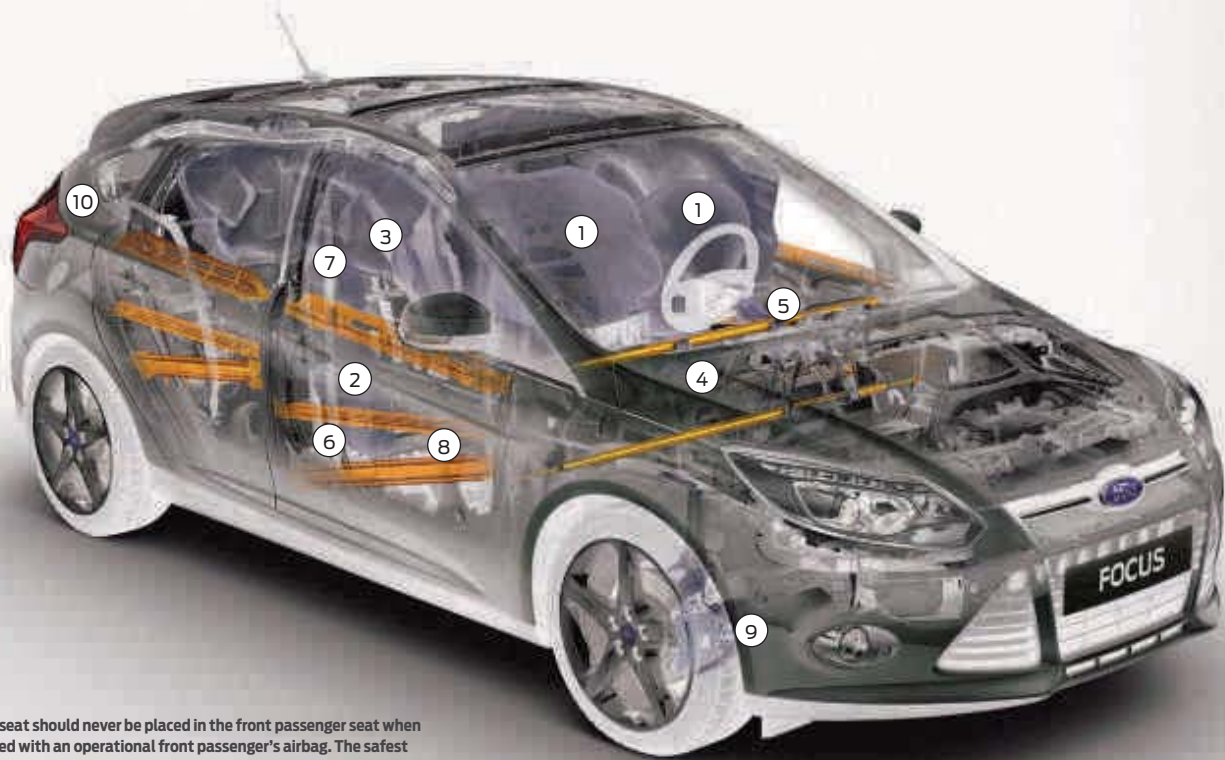
Pre-tensioners<sup>1)</sup>, load-limiting retractors and height-adjustable mounts on front seat belts
7.

Anti-submarining seat bases
8.

Anti-lock brakes (ABS)<sup>1)</sup> with electronic brake-force distribution (EBD)<sup>1)</sup> and Emergency Brake Assist (EBA)<sup>1)</sup> (included with ESP<sup>1)</sup>)
9.

Emergency Brake Warning<sup>2)</sup>
10.

Active City Stop<sup>1)</sup>- (Included in Driver Assistance Pack)



**\*Note:** A rear facing child seat should never be placed in the front passenger seat when the Ford vehicle is equipped with an operational front passenger's airbag. The safest place for children is properly restrained on the rear seat.

<sup>1)</sup>Front passenger's airbag deactivation switch<sup>1)</sup> is available as a Dealer-fitted option.

<sup>1)</sup>Safety feature.

<sup>2)</sup>Driver assistance feature.



## Deflation Detection System<sup>1)</sup>

Designed to alert you if a tyre's pressure is too low, such as in the case of a puncture. (Standard on Titanium X and ST)



## Quickclear heated windscreen<sup>2)</sup>

Designed to demist the screen in seconds, even on frosty mornings. (Standard on Zetec, Titanium, Titanium X, ST2 and ST3)

## Lane Keeping Alert<sup>2)</sup> and Lane Keeping Aid<sup>o 2)</sup>

It only takes a momentary slip in concentration to drift out of your lane when driving on the highway. Lane Keeping Alert<sup>2)</sup> is designed to recognise when you approach the road markings without using the indicator, and alerts you with vibrations through the steering wheel. Lane Keeping Aid<sup>2)</sup> is designed to apply steering torque back towards the lane you were in to help you recognise that corrective action is required. (Option as part of Driver Assistance Pack)

<sup>o</sup>Operates at speeds over 40 mph on multi-lane roads with clearly visible lane markings.





### Active Park Assist

Ultrasonic sensors confirm whether the gap is large enough to park in, and the steering is then automatically controlled while you operate the pedals. (Standard on Titanium X and option as part of Convenience Pack)

<

## Thinking ahead

In the new Ford Focus, advanced technology helps make every journey easier and more enjoyable.



^

### Active City Stop\*

Designed to help reduce the likelihood or consequences of your car colliding with the vehicle in front in slow-moving traffic the system applies the brakes if it is detected that a collision is likely. (Option as part of Driver Assistance Pack)

\*Designed to operate at speeds below 20mph in slow moving traffic.

### Traffic Sign Recognition

Designed to automatically read standard format road-speed signs and display the posted speed limit in the HMI-enhanced cluster. (Option as part of Driver Assistance Pack)

>



^

### Blind Spot Information System

As another vehicle – car, van or lorry – enters your blind spot, it is designed to alert you with a discreet warning light built into the driver's and passenger's door mirrors. (Option, as part of Driver Assistant Pack)



^

### Driver Alert

Designed to warn you if the system detects driving behaviour that indicates a drop in alertness levels. Initially, a warning icon is displayed in the instrument cluster, followed by a warning chime if driving alertness further declines. (Option as part of Driver Assistance Pack)



^

### Auto High Beam

Designed to switch the headlights from high beam to low beam as soon as oncoming traffic or adequate street lighting are detected. When the road is clear, the system is designed to automatically switch to high beam again. (Option as part of Driver Assistance Pack)



Cockpit driving position

Driving the new Ford Focus, you could easily believe you were in control of a sports car; the low seating position and cockpit style interior means it fits you like a glove.



Designed around you

From the driver-orientated cockpit to the responsiveness of the steering, throttle and brakes and the feel of the switches and controls – your every connection with the new Ford Focus makes you feel a part of the car.



Ford Power Starter Button

Start the car without ever holding the key. Just keep the key fob with you in your pocket or bag. (Standard on Zetec S, Titanium, Titanium X and ST)



Autowipers

Windscreen wipers that are activated automatically when it begins to rain. (Standard on Titanium , Titanium X, ST2 and ST3)



Door-edge protectors

A protective flap, hidden in each door, moves into position as the door opens to help prevent dents and scratches in tight spaces. (Option on all series except Studio)



Allergy-tested interior

New Ford Focus's interior consists exclusively of materials that reduce the risk of allergies to the lowest possible level, while a high-performance pollen filter prevents dust and pollen from entering the passenger compartment.

A true driver's car

Many hours were spent developing the cockpit and seating position of the new Ford Focus. As a result, everything is easy to control and feels natural to the driver.





**Air conditioning**

(Standard)

**Generous loadspace**

316\* litres of luggage capacity on 5-door models, increasing to 1101\* litres with the rear seats folded.

\*With standard mini spare wheel.

**Electronic Stability Programme (ESP)**

(Standard)

# Studio

The Studio is a stylish introduction to the Ford Focus range.



**Studio standard features**

- 16" 5 spoke alloy wheels
- Electric body colour door mirrors with turn indicators
- Body colour rear spoiler (5-door only)
- Electrically-operated front windows with one-touch lowering on the driver's side
- Air Conditioning
- Ford AM/FM CD Audio System with USB connectivity
- Rake- and reach-adjustable steering column
- Ford Easy-Fuel capless refuelling system
- Ford Intelligent Protection System (IPS)
- Electronic Stability Programme (ESP) with Traction Control and Emergency Brake Assist (EBA)
- Torque Vectoring Control
- Remote central locking
- Front side and curtain airbags
- Isofix child safety seat attachments

Image shows Ford Focus Studio in Moondust Silver metallic paint (option)

**Body colour door mirrors**

(Standard)

**Ford Easy-Fuel capless refuelling system**

Only accepts the correct type of fuel-filler nozzle for your car. (Standard)

**Body colour rear spoiler**

(Standard on 5-door)







**Ford Easy-Fuel**  
(Standard)

**Radio/CD with 3.5" dot-matrix multi-functional display**  
(Standard)

**Trip computer**  
(Standard)

## Edge

The new Focus Edge effortlessly merges stylish design with innovation and convenience.



### Additional to Studio

- 16" 5-spoke 'Design' steel wheels
- Thatcham category 1 alarm
- Body colour exterior door handles
- Ford AM/FM CD Audio System with USB and AUX connectivity
- Steering Wheel audio controls
- Trip/fuel computer
- Ford Eco Mode driver information system
- Roof rails – silver finish (Estate only)
- Tonneau cover (Estate only)

Image shows Ford Focus Edge in Candy Red metallic paint (option)

### USB port

Built-in connectivity for your digital music player\* or USB stick. (Standard)

### Electrically-operated door mirrors

(Standard)

### Electronic Stability Programme (ESP)

(Standard)







**Sports-style front seats**

(Standard)  
(Image below shows optional centre console, available as accessory)



**Front fog lights**

(Standard)



# Zetec

New Ford Focus's dynamic character really comes alive on Zetec, with an even greater emphasis placed on driving enjoyment.



**Additional to Edge**

- 16" 5x2-spoke alloy wheels
- Quickclear heated windshield
- Front fog lights
- Chrome finish on upper door line
- Sports-style front seats
- Driver seat lumbar adjust
- Leather-trimmed 4-spoke steering wheel
- Ford DAB audio system with 3.5" dot-matrix multi-functional display, six speakers, AUX and USB connectivity
- Ford SYNC with Emergency Assist, Bluetooth® and voice control
- Heated door mirrors

Image shows Ford Focus Zetec in Moondust Silver metallic paint (option)

**Note** The Bluetooth® word mark and logos are owned by the Bluetooth SIG, Inc. and any use of such marks by Ford Motor Company Limited and its associated companies is under licence. iPod® is a trademark of Apple Inc. Other trademarks and trade names are those of their respective owners.

**Chrome finisher**

(Standard)



**Dark headlight bezel**

(Standard)



**16" alloy wheels**

(Standard)







**Red partial leather interior**  
(Option as part of Zetec S interior Pack)



**Large body colour rear spoiler**  
(Standard)



## Zetec S

Ford Focus Zetec S is proof that pulses were made to be quickened. A taut, athletic profile telegraphs its road-taming intentions, while the sporty cockpit fits like a glove.



### Additional to Zetec

- 17" 10x2-spoke alloy wheels
- Body colour front bumper skirt with lower aerofoil in high-gloss black
- Honeycomb design 3-piece lower front grille insert in high-gloss black
- Sports pedals
- Sports suspension
- Body colour large rear spoiler
- Body colour side skirts
- 2-piece rear bumper skirt with lower diffuser in high gloss black
- Premium centre console with armrest, open stowage bins, CD storage, additional 12v front and rear power sockets and Z-shape handbrake
- Ford Power Starter Button
- Rear lights with LED technology

Image above shows Ford Focus Zetec S in Panther Black metallic paint (option). Image left includes optional features

**Front bumper skirt**  
(Standard)



**Rear bumper skirt with lower diffuser**  
(Standard)



**Rear lights with LED technology**  
(Standard)







**Ford Power Starter Button**  
(Standard)

**Dual-zone Electronic Automatic Temperature Control (DEATC)**  
(Standard)

**Auto-dimming rear-view mirror**  
(Standard)

## Titanium

Titanium is equipped with some of the very latest in comfort and convenience features.



### Additional to Zetec

- 16" 7x2-spoke alloy wheels
- Automatic headlights
- Rain sensitive windscreen wipers
- High-gloss black upper and lower grilles
- Rear lights with LED technology
- Leather gearshift knob
- Aluminium-finish front scuff plates
- Dual-zone Electronic Air Temperature Control (DEATC)
- Ford Power Starter Button
- Cruise control with speed limiter
- Footwell courtesy lights
- Rear seat folding centre armrest
- Auto dimming rear view mirror
- Sony Branded Audio System with DAB, 4.2" TFT multi-functional display, 9 speakers, AUX and USB connectivity
- Ford SYNC with Emergency Assist, Bluetooth® and voice control
- Premium centre console with arm rest, stowage compartments, 12V front and rear power socket
- Z-shape handbrake
- Hill Start Assist
- Interior ambient lighting

Image shows Ford Focus Titanium in Moondust Silver metallic paint (option)

**Automatic headlights and rain sensitive windscreen wipers**  
(Standard)

**High-gloss black upper and lower grilles**  
(Standard)

**Rear lights with LED technology**  
(Standard)







**17" 15-spoke alloy wheels**  
(Standard)

**Partial leather seat trim**  
(Standard)

**Active Park Assist**  
(Standard)

## Titanium X

The very latest innovative technology and contemporary luxury make Titanium X the ultimate new Ford Focus.



### Additional to Titanium

- 17" 15-spoke alloy wheels
- Active Park Assist, including front and rear parking distance sensors
- Heated front seats
- Bi-Xenon headlights
- LED day running lights
- Multi-colour ambient LED lighting
- Leather trimmed seat bolsters
- Power operated driver seat
- Passenger seat height and lumbar adjustment
- Power folding door mirrors
- Deflation Detection System (DDS)
- Front and rear carpet floor mats

Image shows Ford Focus Titanium X in Candy Red metallic paint (option)

**Heated front seats**  
(Standard)

**Rear lights with LED technology**  
(Standard)

**Bi-Xenon headlights**  
(Standard)







**Recaro sports seats with partial leather trim\***  
(Standard on ST2)

**Unique ST instrument cluster binnacle**  
Featuring turbo boost, oil pressure and oil temperature gauges. (Standard)

**Sports-tuned suspension**  
(Standard)

## ST

With exhilarating power and handling, an addictive soundtrack and sleek sports design, the ST is the ultimate expression of Focus driving quality and performance.



### ST1

- Unique 18" ST alloy wheels
- ST design full bodystyling kit
- Unique ST rear spoiler
- Black headlight surrounds
- Black-finish roof rails (estate only)
- Recaro sports front seats with fabric trim\*
- Ford DAB audio system with AUX and USB connectivity
- Ford SYNC with Emergency Assist, Bluetooth® and voice control
- Ford Power Starter Button
- Power heated door mirrors
- ST front door scuff plates

- Deflation Detection System (DDS)
- Manual Air Conditioning
- Thatcham Category 1 alarm

### ST2, additional to ST1

- Recaro sports front seats with partial leather trim\*
- Sony DAB Audio System, 4.2" TFT multi-functional display, 9 speakers, AUX and USB connectivity
- Dual-zone Electronic Automatic Temperature Control (DEATC)
- Heated windscreen
- Automatic headlights, Auto-dimming rear-view mirror and autowipers

- Front and rear carpet floor mats
- ST3, additional to ST2**

- Bi-xenon headlights with jetwash
- LED day running lights
- Rear lights with LED technology
- Powerfold heated door mirrors
- Recaro heated front sports seats with leather seat facing\*
- Driver's and passenger's 8-way power-adjustable seat
- Recaro sculpted 3-seat rear bench with leather seat facing\*

\*Items covered by third party supplier's warranty, please see back cover for details. Further details can be obtained from your Ford dealer

**Rear diffuser and central dual outlet exhaust tailpipe**  
(Standard)

**Large body colour rear spoiler**  
(Standard)

**Unique 18" ST alloy wheels**  
(Standard)





The range

With a great choice of series, bodystyles and engines, there's a new Ford Focus to meet every need.



Studio

- Standard features**
- 16" 5-spoke alloy wheels
  - Ford AM/FM CD Audio System with USB connectivity
  - Air conditioning
  - Electrically-operated body colour door mirrors
  - Body colour rear spoiler (5-door only)
  - Ford Easy-Fuel capless refuelling system
  - Electrically-operated front windows with one-touch lowering on the driver's side
  - Rake- and reach-adjustable steering column
  - Ford Intelligent Protection System (IPS)
  - Electronic Stability Programme (ESP) with Traction Control and Emergency Brake Assist (EBA)
  - Torque Vectoring Control
  - Remote central locking
  - Front side and curtain airbags
  - Isofix child safety seat attachments

Bodystyle

- 5-door

Engines

- Petrol
  - 1.6 Duratec Ti-VCT (85 PS)

Edge

- Additional to Studio**
- 16" 5-spoke 'Design' steel wheels
  - Trip/fuel computer
  - Ford Eco Mode driver information system
  - Steering wheel audio controls
  - Chrome door release lever
  - Thatcham category 1 alarm
  - Roof rails – silver finish – (Estate only)
  - Tonneau cover – (Estate only)

Bodystyles

- 5-door and Estate

Engines

- Petrol
  - 1.6 Duratec Ti-VCT (105 PS)
  - 1.0 EcoBoost (100PS)
  - 1.6 Duratec Ti-VCT (125PS)
- Diesel
  - 1.6 Duratorq TDCi (95 PS)
  - 1.6 Duratorq TDCi (115 PS)

Zetec

- Additional to Edge**
- 16" 5x2-spoke alloy wheels
  - Ford DAB Audio System with 3.5" dot-matrix multi-functional display, six speakers AUX and USB connectivity
  - Ford SYNC with Emergency Assist, Bluetooth® and voice control
  - Front fog lights
  - Heated door mirrors
  - Chrome finish on upper door line
  - Sports-style front seats
  - Drivers seat lumbar adjust
  - Leather-trimmed 4-spoke steering wheel
  - Quickclear heated windshield

Bodystyles

- 5-door and Estate

Engines

- Petrol
  - 1.6 Duratec Ti-VCT (105 PS)
  - 1.0 EcoBoost (100PS)
  - 1.6 Duratec Ti-VCT (125 PS)
  - 1.0 EcoBoost (125PS)
- Diesel
  - 1.6 Duratorq TDCi (115 PS)
  - 2.0 Duratorq TDCi (140 PS)

Zetec S

- Additional to Zetec**
- 17" 10x2-spoke alloy wheels
  - Body colour front bumper skirt with lower aerofoil in high gloss black
  - Body colour side skirts
  - 2-piece rear bumper skirt with lower diffuser in high gloss black
  - Body colour large rear spoiler
  - Sports-style front seats
  - Sports pedals
  - Sports suspension
  - Ford Power Starter Button
  - Premium centre console with armrest, open stowage bins, CD storage, additional 12v front and rear power sockets and Z-shape handbrake

Bodystyles

- 5-door and estate

Engines

- Petrol
  - 1.6 Duratec Ti-VCT (125 PS )
  - 1.0 EcoBoost (125PS)
  - 1.6 EcoBoost (182 PS)
- Diesel
  - 1.6 Duratorq TDCi (115 PS)
  - 2.0 Duratorq TDCi (163 PS)

Titanium

- Additional to Zetec**
- 16" 7x2-spoke alloy wheels
  - Automatic headlights
  - Rain sensitive windscreen wipers
  - High-gloss black upper and lower grilles
  - Rear lights with LED technology
  - Leather gearshift knob
  - Premium centre console with armrest, stowage compartments, 12-volt front and rear power sockets, and Z-shape handbrake
  - Aluminium-finish front scuff plates with 'Ford' logo
  - Dual-zone Electronic Air Temperature Control (DEATC) air conditioning
  - Ford Power Starter Button
  - Cruise control with speed limiter
  - Footwell courtesy lights
  - Rear seat folding centre armrest
  - Hill Start Assist
  - Auto dimming rear view mirror
  - Sony Branded DAB Audio system with TFT screen
  - Ford SYNC with Emergency Assist, Bluetooth® and voice control
  - Interior ambient lighting

Bodystyles

- 5-door and Estate

Engines

- Petrol
  - 1.0 EcoBoost (100PS)
  - 1.6 Duratec Ti-VCT (125 PS)
  - 1.0 EcoBoost (125PS)
  - 1.6 EcoBoost (150 PS)
- Diesel
  - 1.6 Duratorq TDCi (115 PS)
  - 2.0 Duratorq TDCi (140 PS)

Titanium X

- Additional to Titanium**
- 17" 15-spoke alloy wheels
  - Active Park Assist, including front and rear parking distance sensors
  - Heated front seats
  - Passenger seat height and lumbar adjustment
  - Bi-Xenon headlights
  - LED day running lights
  - Multi-colour ambient LED lighting
  - Leather trimmed seat bolster
  - Power operated driver seat
  - Power folding door mirrors
  - Deflation Detection system (DDS)
  - Front and rear floor mats

Bodystyles

- 5-door and Estate

Engines

- Petrol
  - 1.0 EcoBoost (100PS)
  - 1.0 EcoBoost (125PS)
  - 1.6 EcoBoost (182 PS)
- Diesel
  - 1.6 Duratorq TDCi (115 PS)
  - 2.0 Duratorq TDCi (163 PS)

ST

- ST1**
- Unique 18" ST alloy wheels
  - ST design full bodystyling kit
  - Unique ST rear spoiler
  - Black headlight surrounds
  - Black roof rails (estate)
  - Recaro sports front seats with fabric trim\*
  - Ford DAB Radio/CD with Ford SYNC in-car connectivity, Bluetooth®, Voice Control System, AUX input and USB
  - Unique ST leather gearshift knob
  - ST front door scuff plates
  - Air conditioning
  - Thatcham Category 1 alarm

ST2, additional to ST1

- Recaro sports front seats with partial leather trim\*
- Sony DAB radio/CD with 4.2" display, Ford SYNC in-car connectivity,Bluetooth® , Voice Control System, AUX input, USB
- Dual-zone Electronic Automatic Temperature Control (DEATC)
- Heated windscreen
- Automatic headlights
- Auto-dimming rear-view mirror with autowipers
- Front and rear carpet floor mats

ST3, additional to ST2

- Bi-xenon headlights with jetwash
- LED day running lights
- Rear lights with LED technology
- Recaro heated front sports seats with leather seat facng\*
- Driver's and passenger's 8-way power-adjustable seat
- Recaro sculpted 3-seater rear bench with leather seat facing\*

Bodystyles

- 5-door and estate

Engine

- Petrol
  - 2.0 EcoBoost 250 PS (184 kW)

\*Item covered by third party supplier's warranty, please see back cover for details.





**Deep pile floor mats, velour for front and rear**  
Premium quality floor mats with reflective piping. (Option with Windsor leather and Accessory)



**Scuff plates**  
Elegant polished stainless steel scuff plates, with etched 'Focus' script. (Accessory)



**Leather gearshift knob**  
High-grade leather gearshift knob with aluminium-look insert. (Accessory)



## Interior and exterior styling

Create a distinctive look for your new Ford Focus with an exclusive range of styling accessories. Every element blends seamlessly with the car's dynamic lines giving it your own unique sense of sporting style.

### 5-door rear spoiler

Gives an aerodynamic finish to the roof line. (Standard on Zetec S & Accessory)



### Estate rear spoiler

Adds a particularly sporting touch to the rear of the estate. (Standard on Zetec S & Accessory)



### Ford Windsor Leather key features (Option)

- Premium Windsor leather seats in Charcoal Black
- Coordinating leather door panel inserts
- Leather-trimmed front centre armrest
- Deep pile velour floor mats front and rear
- Heated front seats with driver's 6-way seat adjustment

### High Tech Interior Styling (Accessories)

- Crystal Blue LED illuminated leather gearshift knob
- Crystal Blue LED illuminated brushed stainless steel scuff plates
- Velour floor mats with 'Focus' logo

### Chrome-finish mirror caps

Elegant chrome design conveys a sporty, dynamic edge. (Accessory)



### Rear bumper protector

Brushed aluminium-look protector helps prevent scratches on the rear bumper. Foil version also available. (Accessory)



### 18" 8-spoke Y-design alloy wheel

Y-design alloy wheel with premium 'sterling-silver' look finish (Option on Zetec S and accessory, not available with 1.0 EcoBoost (100 PS))







# Wheels

A range of distinctive alloy wheels purpose-designed to complement new Ford Focus's dynamic lines.

Image opposite shows Ford Focus Titanium in Candy Red metallic paint (Option) with 17" 5x2-spoke alloy wheel (Option and Accessory).

**Note** The 18" wheels and tyres available on Ford Focus are designed to deliver more sporting driving characteristics and a firmer ride quality compared to 16" and 17" wheels and tyres.

16" 5-spoke 'Design' steel wheel  
(Standard on Edge and Accessory)



16" 5-spoke 'Y'-design alloy wheel  
(Standard on Studio and Accessory)



16" 5x2-spoke alloy wheel  
(Standard on Zetec and Accessory)



16" 5x3-spoke alloy wheel  
(Option on Edge as part of Appearance Pack and Accessory)



16" 7x2-spoke alloy wheel  
(Standard on Titanium and Accessory)



16" 10x2-spoke alloy wheel  
(Accessory)



17" 5x2-spoke alloy wheel  
(Accessory)



17" 5x2-spoke alloy wheel  
(Accessory)



17" 5x2-spoke alloy wheel with premium 'luster-nickel' look finish  
(Option on Titanium and Accessory)



17" 10x2-spoke alloy wheel  
(Standard on Zetec S; option on Zetec as part of Appearance Pack and Accessory)



17" 15-spoke alloy wheel  
(Standard on Titanium X and Accessory)



18" 5-spoke alloy wheel  
(Standard on ST)



18" 5-spoke Rado Grey finish alloy wheel  
(Option on ST2 and ST3 only)



18" 5-spoke alloy wheel  
(Option on Titanium and Titanium X, and Accessory)



18" 7-spoke alloy wheel  
(Accessory)



18" 8-spoke Y-design alloy wheel with premium 'sterling-silver' look finish  
(Option on Zetec S and Accessory\*)



18" 8-spoke Y-design alloy wheel in Panther Black/machined finish  
(Accessory\*)







### Sony DAB radio/SD-navigation system

Features include rear-view camera, 5" TFT display, - includes Ford SYNC (Bluetooth® hands-free phone and Voice Control System.) (Please see opposite page for full description)

### Radio/CD with 3.5" starburst multi-functional display

Includes MP3-compatibility, six speakers and USB interface. (Standard on Studio)

### Ford DAB Audio – with 3.5" multifunctional display

Includes MP3 compatibility, 6 speakers, USB port, AUX jack and remote audio controls - Includes Ford SYNC (Standard on Zetec, Zetec S and ST1).

### Ford DAB Navigation – with 5" multi-functional display

Featuring a 5" TFT screen - Includes Ford SYNC, enhanced instrument cluster navigation display with easy-to-follow route guidance (Option on Zetec and Zetec S).



## Infotainment

Ford is leading the way with in-car audio and interactivity. We combine the latest technology with a commitment to ease-of-use to make your drive even more entertaining and informative.



### Sony DAB Audio – with 4.2" multi-functional display

With colour screen, Ford SYNC, MP3 compatibility, nine speakers, USB port, AUX jack and audio streaming (with compatible mobile phones). (Standard on Titanium X, ST2 and ST3)



### Sony DAB radio/SD-navigation system

With rear-view camera, 5" TFT display, branded integrated control panel, Ford SYNC (Bluetooth® hands-free phone and Voice Control System) with USB/iPod® connectivity, AUX connection for external music devices, remote audio and MFD controls, nine premium speakers. (Option on Titanium, Titanium X, ST2 and ST3)



### Ford SYNC with Emergency Assistance\*

Ford SYNC lets you operate most popular MP3 players, Bluetooth®-enabled phones and USB drives with simple voice commands. The Ford Emergency Assist feature is designed to automatically place a call with the emergency services in the event of a collision where the airbag is deployed. (Option on Edge, Standard on Zetec, Zetec S, Titanium, Titanium X and ST models)



### Ford SYNC - Bluetooth® with Voice Control System

Enables you to make hands-free calls, while the Voice Control System technology lets you control your Bluetooth®-compatible mobile phone and audio device with the sound of your voice. (Option on Edge; Standard on Zetec, Zetec S, Titanium, Titanium X and ST models)



### Portable navigation

Leave your maps behind with a simple and intuitive mobile GPS navigation system. Please contact your Ford Dealer for details (accessory).



### USB port

Built-in connectivity lets you listen to, and operate, your digital music player via the car's Ford audio system (Standard). A dedicated iPod® connector cable is available (accessory).

### On the same wavelength

Whether it's staying in touch with your friends, listening to your personal music collection or knowing precisely where you're going, you want it to be quick, easy and intuitive. We couldn't agree more.

**Note** The Bluetooth® word mark and logos are owned by the Bluetooth SIG, Inc. and any use of such marks by Ford Motor Company Limited and its associated companies is under licence. iPod® is a trademark of Apple Inc. Other trademarks and trade names are those of their respective owners.

**Note** It is an offence for drivers to use a hand-held mobile phone or similar device while driving.

\*Ford Emergency Assistance operates in over 30 European countries. This feature works when paired with a compatible connected mobile phone that is with you when an airbag is deployed (excludes knee airbags and rear inflatable safety belts, if equipped) or the fuel pump shut-off switch is activated. See your local Ford website for latest information.





#### Luggage floor net\*

Elasticated net which attaches to luggage compartment floor.



#### Rubber floor mats\*

Protects from dirt and wet items. Front and rear, with a fixed driver's mat to help prevent slippage (Accessory)



#### Tow bar, retractable\*\*

Electrically-released tow bar appears only when needed and can be easily retracted behind the rear bumper when not required. (Not available with full bodystyling kit). Detachable and fixed tow bars also available as accessories.



#### Luggage compartment mat, reversible and foldable\*

Luggage compartment protection, even with the rear seats folded down. Reversible design: carpet with Focus logo or durable rubber – with flap to protect rear bumper during loading. (Accessory)



#### Load retention net, extractable\*(1)

Helps keep your items secure in the luggage compartment while you're on the move. For fitment behind the rear seats. Stores away easily when not in use. (Estate only accessory)



#### Load retention guard, second row\*(1)

Robust, upper half-height dog guard helps keep dogs or items of luggage in the luggage compartment (removable when not in use). (Estate only accessory) Shown here with Waeco® Coolbox\*. Longitudinal divider also available.



#### Load retention guard, first row\*\*(1)

Sturdy, full-height mesh barrier locates behind the front seats. Provides a larger area for longer loads to be carried securely within the luggage compartment (removable when not in use). (accessory, estate only)

## Enhanced versatility

We all use our cars in different ways. Maybe to transport mountain bikes? Or for the odd weekend away at the beach? Your Ford Dealer can help you adapt your new Ford Focus to your lifestyle with a wide range of Ford accessories.

45

#### Thule® bike carrier\*\*

Carries bikes with up to 80 mm diameter frame. Shown with Ford Lifestyle Collection mountain bike.

#### Thule® ski/snowboard carrier\*\*

For up to six pairs of skis or up to 4 snowboards. (Thule® Xtender 727 deluxe shown)

#### Thule® roof box\*\*

A range of different sized boxes. Thule® Dynamic 800 shown.

#### ClimAir® wind deflector\*\*

Reduces wind turbulence and noise, allowing you a more enjoyable drive with the windows down, even during light rain. (Front and rear available)

#### Roof crossbars\*

Made from solid aluminium. Aerodynamic, with a maximum load capacity of 75 kg. This is the base for all shown roof attachments.

#### Anti-slip luggage compartment mat\*

Luggage compartment protection with an anti-slip surface.

#### Loadspace liner\*

Features a very high lip (8.5 cm), so is ideal for carrying wet and dirty items. (Estate only)



#### 18" 8-spoke Y-design alloy wheel in Panther Black \*

Panther Black/machined finish

#### Locking wheel nuts \*

Precision forged key with hardened pins for easy installation and removal.

#### Contoured mudflaps\*

Protect bodywork from stone chips. Available for front and rear.

#### Rear bike carrier, tow bar-mounted\*\*

Carries 2 bicycles and is extendable to carry an additional bike.

\*Available as an accessory.

\*\*Available as an option and accessory.

(1) Meets European ECE-17.07/DIN 75410-2 safety requirements.

+Item covered by third party supplier's warranty, please see back cover for details.



#### Britax Römer® child seat\*\*

Various child seats available for all ages, shown here with ISOFIX. (Accessory)

#### Eibach® suspension-lowering kit\*\*

Enhances driving performance and handling as well as giving a more sporty appearance. Lowers the car by approximately 30 mm. (Accessory)









Specifications

Interior equipment

	Studio	Edge	Zetec	Zetec S	Titanium	Titanium X	ST-1	ST-2	ST-3
Audio and communication systems									
Radio/CD, 3.5" starburst display, integrated control panel, six speakers, USB connectivity port with iPod® functionality	●	–	–	–	–	–	–	–	–
Radio/CD, 3.5" starburst display, integrated control panel, remote audio controls, six speakers, USB connectivity port with iPod® functionality	–	●	–	–	–	–	–	–	–
Ford DAB Audio System – 3.5" dot matrix display, extended integrated control panel, Ford SYNC – includes Emergency Assistance*, Bluetooth® and Voice Control and audible text messaging, USB and Privacy Mode, external AUX connection for external music devices, remote audio controls, 6 speakers	–	○	●	●	–	–	●	–	–
Sony DAB Audio System – 4.2" TFT display, branded integrated control panel,Ford SYNC – includes Emergency Assistance*, Bluetooth® and Voice Control and audible text messaging, USB and Privacy Mode, external AUX connection for external music devices, remote audio and MFD controls, 9 premium speakers	–	–	–	–	●	●	–	●	●
Ford DAB Radio/CD Navigation system – 5" TFT display, extended integrated control panel,Ford SYNC – includes Emergency Assistance*, Bluetooth® and Voice Control and audible text messaging, USB and Privacy Mode, external AUX connection for external music devices, 6 speakers, remote audio and MFD controls, SD memory card slot for data (e.g. music) exchange; navigation data on SD card	–	–	○	○	–	–	–	–	–
Sony radio/CD-navigation system with rear-view camera, 5" TFT display, branded integrated control panel, Ford SYNC – includes Emergency Assistance*, Bluetooth® and Voice Control and audible text messaging, USB and Privacy Mode, external AUX connection for external music devices, remote audio and MFD controls, nine premium speakers, rear-view camera functionality	–	–	–	–	○	○	–	○	○
Ford SYNC – Includes Bluetooth® Hands-Free Phone and Voice Control System with USB/iPod® connectivity port	–	□	●	●	●	●	●	●	●
Sony DAB Premium Sound System – Ten premium speakers - includes centre speaker and subwoofer (subwoofer fitted in spare wheel location, tyre repair kit supplied ilo mini spare wheel)	–	–	–	–	–	–	–	○	○
Climate control									
Air conditioning – Manual control	●	●	●	●	–	–	●	–	–
Air conditioning – Dual-zone Electronic Automatic Temperature Control (DEATC)	–	–	–	–	●	●	–	●	●
Interior convenience features									
Ford Power Starter Button	–	–	–	●	●	●	●	●	●
Centre console – with open stowage bins, additional 12V power socket	●	●	●	–	–	–	–	–	–
Centre console – Premium, with armrest, open stowage bins, CD storage, additional 12V front and rear power sockets, and Z-shape handbrake	–	–	○	●	●	●	●	●	●
Courtesy light – Ambient LED courtesy lighting, footwell area, and front and rear reading lights	–	–	–	–	●	●	●	●	●
Rear view mirror – Auto-dimming	–	–	–	–	●	●	–	●	●
Trip/fuel computer	–	●	●	●	●	●	●	●	●
Glass Sunroof – Power tilt/slide with interior blind (not available with overhead console) – 5-door only	–	–	–	–	○	○	–	○	○
Windows – Electrically-operated front with one-touch lowering on driver's side	●	●	●	●	–	–	–	–	–
Windows – Electrically-operated front and rear with one-touch lowering/closing on driver's side, and global closing	–	□	□	□	●	●	●	●	●
Seats									
Front seats – Comfort-style	●	●	–	–	–	–	–	–	–
Front seats – Sports-style	–	–	●	●	●	●	–	–	–
Front seats – RECARO sports	–	–	–	–	–	–	●	●	●
Front seat – Driver's manual lumbar support adjustment	–	○	●	●	●	●	–	–	–
Front seat – Driver's manual height and fore/aft adjustment	●	●	●	●	●	–	●	●	–

Interior equipment

	Studio	Edge	Zetec	Zetec S	Titanium	Titanium X	ST-1	ST-2	ST-3
Front seat – Driver's power height, fore/aft adjustment and recliner	–	–	–	□	□	●	–	–	–
Front seat – Driver's power height, fore/aft, backrest angle and tilt adjustment	–	–	–	–	–	–	–	–	●
Front seat – Passenger's manual lumbar support adjustment	–	–	–	–	□	●	–	–	–
Front seat – Passenger's manual fore/aft adjustment	●	●	●	●	●	–	●	–	–
Front seat – Passenger's manual height and fore/aft adjustment (includes passenger lumbar support)	–	–	–	–	○	●	–	●	–
Front seat – Passenger's power height, fore/aft, backrest angle and tilt adjustment	–	–	–	–	–	–	–	–	●
Heated Front seats – Heated cushion and backrest	–	–	–	□	□	●	–	–	●
Rear seat – 60:40 split back and cushion	●	●	●	●	●	●	–	–	–
Rear seat – Folding centre armrest, with two integrated cup holders	–	–	–	–	●	●	–	–	–
Rear seat – Recaro-style 60:40 'sculpted' split back and cushion with two height-adjustable head restraints	–	–	–	–	–	–	●	●	●
Loadspace									
Auxiliary power socket – (Estate only)	–	●	●	●	●	●	●	●	●
Tonneau cover – (Estate only)	–	●	●	●	●	●	●	●	●
Load retention guard behind front seats (Estate only)	–	○	○	○	○	○	–	–	–

● = Standard, ○ = Optional, at extra cost, □ = Part of an option pack, at extra cost. \*Ford Emergency Assistance operates in over 30 European countries. This feature works when paired with a compatible connected mobile phone that is with you when an airbag is deployed (excludes knee airbags and rear inflatable safety belts, if equipped) or the fuel pump shut off switch is activated. See your local Ford website for latest information.

Safety and security

	Studio	Edge	Zetec	Zetec S	Titanium	Titanium X	ST-1	ST-2	ST-3
Safety and driver assistance									
Intelligent Protection System (IPS) <sup>1)</sup>	●	●	●	●	●	●	●	●	●
Anti-lock braking system (ABS) <sup>1)</sup> with Electronic Brake-force Distribution (EBD) <sup>1)</sup>	●	●	●	●	●	●	●	●	●
Electronic Stability Programme (ESP) <sup>1)</sup> with Traction Control <sup>1)</sup> and Emergency Brake Assist (EBA) <sup>1)</sup>	●	●	●	●	●	●	●	●	●
Hill Start Assist <sup>2)</sup> – Available with optional retractable towbar	–	□	□	–	●	●	●	●	●
Emergency Brake Warning <sup>2)</sup> – Automatic flashing of brake lights under heavy braking	●	●	●	●	●	●	●	●	●
Airbags – Driver and front passenger <sup>1)</sup>	●	●	●	●	●	●	●	●	●
Airbags – Front side impact <sup>1)</sup>	●	●	●	●	●	●	●	●	●
Airbags – Front and rear curtain <sup>1)</sup>	●	●	●	●	●	●	●	●	●
Active City Stop	–	–	□	□	□	□	–	□	□
Deflation Detection System (DDS) <sup>1)</sup>	–	–	–	–	○	●	●	●	●
Security									
Remote central/double locking	●	●	●	●	●	●	●	●	●
Alarm – Thatcham Category 1 perimeter and volume-sensing alarm	–	●	●	●	●	●	●	●	●
Ford Key-Free System – (Includes keyless entry and Ford Power Starter Button)	–	–	–	–	□	□	–	–	●

● = Standard, ○ = Optional, at extra cost, □ = Part of an option pack, at extra cost, <sup>1)</sup>Safety feature, <sup>2)</sup>Driver assistance feature.  
\*Note: A child seat should never be placed in the front passenger seat when the Ford vehicle is equipped with an operational front passenger's airbag. The safest place for children is properly restrained on the rear seat.



# Specifications

## Mechanical features

	Studio	Edge	Zetec	Zetec S	Titanium	Titanium X	ST-1	ST-2	ST-3
<b>Steering</b>									
Electric Power-Assisted Steering (EPAS) – (Not with 1.6 Petrol Ti-VCT 85PS/105PS or 1.6 Petrol Powershift)	–	●	●	●	●	●	–	–	–
Electric power-assisted steering (EPAS) with variable steering ratio – (Focus ST models only)	–	–	–	–	–	–	●	●	●
Hydraulic Power Steering (HPAS) – (Only with 1.6 Petrol Ti-VCT 85PS/105PS and 1.6 Petrol Powershift)	●	●	●	●	●	–	–	–	–
<b>Suspension</b>									
Front – Independent with MacPherson struts and anti-roll bar. Rear – Independent Control Blade multi-link system and anti-roll bar	●	●	●	●	●	●	–	–	–
Suspension – ST setup	–	–	–	–	–	–	●	●	●
<b>Technology</b>									
Cruise control – with speed limiter (Standard on Econetic series)	–	–	○	○	●	●	–	○	○
Adaptive Cruise Control – (not available with 1.6 Petrol Ti-VCT engine)	–	–	–	–	○	○	–	–	–
Ford Eco Mode – (driver information system)	–	●	●	●	●	●	●	●	●
Auto-Start-Stop system – (only available on 1.0/1.6 EcoBoost and 1.6 TDCi engines with manual transmission)	–	●	●	●	●	●	–	–	–

● = Standard, ○ = Optional, at extra cost, □ = Part of an option pack, at extra cost.

## Fuel and performance

	Euro Stage	Trans	Maximum Power PS (kW)	Torque Nm (Nm with overboost)	CO <sub>2</sub> emissions (g/km) <sup>90</sup>	Fuel consumption			Performance <sup>a</sup>		
						Urban	Extra Urban	Combined	Max. speed (mph)	0-62 mph (secs)	31-62 mph* (secs)
<b>5-door</b>											
1.0 EcoBoost (100 PS) (Start-Stop)	Stage V	M5	100 (74)	170	109	47.9 (5.9) 48.7 (5.8)	68.9 (4.1)	58.9 (4.8) 60.1 (4.7)	115	12.5	13.2
1.0 EcoBoost (125 PS) (Start-Stop)	Stage V	M6	125 (92)	170 (200)	114	44.8 (6.3)	67.3 (4.2)	56.5 (5.0)	120	11.3	10.8
1.6 Duratec Ti-VCT (85 PS)	Stage V	M5	85 (63)	141	136	34.0 (8.3)	61.4 (4.6)	47.9 (5.9)	106	14.9	15.2
1.6 Duratec Ti-VCT (105 PS)	Stage V	M5	105 (77)	150	136	34.0 (8.3)	61.4 (4.6)	47.9 (5.9)	116	12.3	14.3
1.6 Duratec Ti-VCT (125 PS)	Stage V	A6	125 (92)	159	149 ^146	30.4 (9.3) 32.5 (8.7)	58.9 (4.8) 57.7 (4.9)	44.1 (6.4) 44.8 (6.3)	120	11.7	n/a
1.6 EcoBoost (150 PS) (Start-Stop)	Stage V	M6	150 (110)	220 (240)	137	37.2 (7.6)	57.7 (4.9)	47.9 (5.9)	130	8.6	8.6
1.6 EcoBoost (182 PS) (Start-Stop)	Stage V	M6	182 (134)	240	137	37.2 (7.6)	57.7 (4.9)	47.9 (5.9)	138	7.9	7.7
2.0 EcoBoost (250 PS)	Stage V	M6	250 (184)	360	169	28.5 (9.9)	50.4 (5.6)	39.2 (7.2)	154	6.5	5.7
1.6 Duratorq TDCi (95 PS) (Start-Stop)	Stage V + DPF	M6	95 (70)	230	109	55.4 (5.1)	76.4 (3.7)	67.3 (4.2)	112	12.5	10.9
1.6 Duratorq TDCi 99g (105 PS) (Start-Stop)	Stage V + DPF	M6 ECONetic	105 (77)	270	99	65.7 (4.3)	83.1 (3.4)	76.4 (3.7)	116	11.8	11.9
1.6 Duratorq TDCi 88g (105 PS) (Start-Stop)	Stage V + DPF	M6 ECONetic	105 (77)	270	88	72.4 (3.9)	91.1 (3.1)	83.1 (3.4)	116	11.8	11.9
1.6 Duratorq TDCi (115 PS) (Start-Stop)	Stage V + DPF	M6	115 (85)	270	109	55.4 (5.1)	76.4 (3.7)	67.3 (4.2)	120	10.8	9.9
2.0 Duratorq TDCi (140 PS)	Stage V + DPF	M6	140 (103)	320	124	46.3 (6.1)	68.9 (4.1)	57.7 (4.9)	129	8.9	8.6
2.0 Duratorq TDCi (140 PS)	Stage V + DPF	A6	140 (103)	320	134	42.8 (6.6)	65.7 (4.3)	54.3 (5.2)	127	9.5	n/a
2.0 Duratorq TDCi (163 PS)	Stage V + DPF	M6	163 (120)	340	124	46.3 (6.1)	68.9 (4.1)	57.7 (4.9)	135	8.6	8.4
2.0 Duratorq TDCi (163 PS)	Stage V + DPF	A6	163 (120)	340	134	42.8 (6.6)	65.7 (4.3)	54.3 (5.2)	134	8.9	n/a

## Fuel and performance

	Euro Stage	Trans	Maximum Power PS (kW)	Torque Nm (Nm with overboost)	CO <sub>2</sub> emissions (g/km) <sup>90</sup>	Fuel consumption			Performance <sup>a</sup>		
						Urban	Extra Urban	Combined	Max. speed (mph)	0-62 mph (secs)	31-62 mph* (secs)
<b>Estate</b>											
1.0 EcoBoost (100 PS) (Start-Stop)	Stage V	M5	100 (74)	170	112	47.1 (6.0) 47.9 (5.9)	67.3 (4.2)	57.7 (4.9) 58.9 (4.8)	115	12.7	13.4
1.0 EcoBoost (125 PS) (Start-Stop)	Stage V	M6	125 (92)	170 (200)	117	44.1 (6.4)	64.2 (4.4)	55.4 (5.1)	120	11.5	11.0
1.6 Duratec Ti-VCT (105 PS)	Stage V	M5	105 (77)	150	139	33.6 (8.4)	60.1 (4.7)	47.1 (6.0)	116	12.5	14.6
1.6 Duratec Ti-VCT (125 PS)	Stage V	A6	125 (92)	159	149 ^146	30.4 (9.3) 32.5 (8.7)	58.9 (4.8) 57.7 (4.9)	44.1 (6.4) 44.8 (6.3)	120	11.7	n/a
1.6 EcoBoost (150 PS) (Start-Stop)	Stage V	M6	150 (110)	220 (240)	137	37.2 (7.6)	57.7 (4.9)	47.9 (5.9)	130	8.8	8.8
1.6 EcoBoost (182 PS) (Start-Stop)	Stage V	M6	182 (134)	240	137	37.2 (7.6)	57.7 (4.9)	47.9 (5.9)	138	8.1	7.9
2.0 EcoBoost (250 PS)	Stage V	M6	250 (184)	360	169	28.5 (9.9)	50.4 (5.6)	39.2 (7.2)	154	6.5	5.7
1.6 Duratorq TDCi (95 PS) (Start-Stop)	Stage V + DPF	M6	95 (70)	230	109	55.4 (5.1)	76.4 (3.7)	67.3 (4.2)	112	12.7	11.1
1.6 Duratorq TDCi 99g (105 PS) (Start-Stop)	Stage V + DPF	M6 ECONetic	105 (77)	270	99	65.7 (4.3)	83.1 (3.4)	76.4 (3.7)	116	12.0	12.1
1.6 Duratorq TDCi 88g (105 PS) (Start-Stop)	Stage V + DPF	M6 ECONetic	105 (77)	270	88	72.4 (3.9)	91.1 (3.1)	83.1 (3.4)	116	12.0	12.1
1.6 Duratorq TDCi (115 PS) (Start-Stop)	Stage V + DPF	M6	115 (85)	270	109	55.4 (5.1)	76.4 (3.7)	67.3 (4.2)	120	11.0	10.1
2.0 Duratorq TDCi (140 PS)	Stage V + DPF	M6	140 (103)	320	124	46.3 (6.1)	68.9 (4.1)	57.7 (4.9)	129	9.1	8.8
2.0 Duratorq TDCi (140 PS)	Stage V + DPF	A6	140 (103)	320	134	42.8 (6.6)	65.7 (4.3)	54.3 (5.2)	127	9.7	n/a
2.0 Duratorq TDCi (163 PS)	Stage V + DPF	M6	163 (120)	340	124	46.3 (6.1)	68.9 (4.1)	57.7 (4.9)	135	8.8	8.6
2.0 Duratorq TDCi (163 PS)	Stage V + DPF	A6	163 (120)	340	134	42.8 (6.6)	65.7 (4.3)	54.3 (5.2)	134	9.1	n/a

<sup>1</sup>Updated fuel figures from 14th January 2013. <sup>a</sup>In 4th gear. <sup>90</sup>Ford test figures. <sup>90a</sup>The declared fuel consumptions and CO<sub>2</sub> emissions are measured according to the technical requirements and specifications of European Directive 80/1268/EEC or the European Regulation (EC) 715/2007 amended by (EC) 692/2008. Fuel consumption and CO<sub>2</sub> emissions are specified for a vehicle type and not for a single car. The applied standard test procedure enables to compare between different vehicle types and different manufacturers. This information is not part of any product offer made. Real-world fuel consumption can vary as the fuel efficiency of a vehicle is influenced by (individual) car configurations, driving behaviour, use of technical equipment such as air conditioning, as well as other non-technical factors. **DPF** = diesel particulate filter. All petrol engines are equipped with a catalytic converter. **\*\***Preliminary data figures only. To reach the maximum of 250 PS, 98 RON fuel will need to be used.

## Weights and loads

	Euro Stage	Kerbweight (kg)	Gross Vehicle Mass (kg)	Gross Train Mass (kg)	Max. Towable Mass (braked) (kg)	Max. towable Mass (unbraked) (kg)
<b>5-door</b>						
1.0 EcoBoost (100 PS) (Start-Stop), Durashift 5-speed manual	Stage V	1276	1900	2900	1000	635
1.0 EcoBoost (125 PS) (Start-Stop), Durashift 6-speed manual	Stage V	1280	1900	3100	1200	635
1.6 Duratec Ti-VCT (85 PS), Durashift 5-speed manual	Stage V	1270	1825	2525	700	635
1.6 Duratec Ti-VCT (105 PS), Durashift 5-speed manual	Stage V	1270	1825	2525	700	635
1.6 Duratec Ti-VCT (125 PS), Powershift 6-speed Auto	Stage V	1316	1825	2825	1000	655
1.6 EcoBoost (150 PS) (Start-Stop), Durashift 6-speed manual	Stage V	1333	1900	3400	1500	665
1.6 EcoBoost (182 PS) (Start-Stop), Durashift 6-speed manual	Stage V	1333	1900	3400	1500	665
2.0 EcoBoost (250 PS), Durashift 6-speed manual	Stage V	1437	2025	n/a	n/a	n/a
1.6 Duratorq TDCi (95 PS) (Start-Stop), Durashift 6-speed manual	Stage V + DPF	1338	1900	3100	1200	665
1.6 Duratorq TDCi 99g (105 PS) (Start-Stop), Durashift 6-speed manual	Stage V + DPF	1350	1900	2200	300	300
1.6 Duratorq TDCi 88g (105 PS) (Start-Stop), Durashift 6-speed manual	Stage V + DPF	1350	1900	2200	300	300
1.6 Duratorq TDCi (115 PS) (Start-Stop), Durashift 6-speed manual	Stage V + DPF	1344	1900	3100	1200	670



# Specifications

## Weights and loads

	Euro Stage	Kerbweight (kg)	Gross Vehicle Mass (kg)	Gross Train Mass (kg)	Max. Towable Mass (braked) (kg)	Max. towable Mass (unbraked) (kg)
2.0 Duratorq TDCi (140 PS), Durashift 6-speed manual	Stage V + DPF	1421	2050	3550	1500	710
2.0 Duratorq TDCi (140 PS), Powershift 6-speed Auto	Stage V + DPF	1461	2050	3550	1500	730
2.0 Duratorq TDCi (163 PS), Durashift 6-speed manual	Stage V + DPF	1421	2050	3550	1500	710
2.0 Duratorq TDCi (163 PS), Powershift 6-speed Auto	Stage V + DPF	1461	2050	3550	1500	730
Estate						
1.0 EcoBoost (100 PS) (Start-Stop), Durashift 5-speed manual	Stage V	1312	1900	2900	1000	655
1.0 EcoBoost (125 PS) (Start-Stop), Durashift 6-speed manual	Stage V	1316	1900	3100	1200	655
1.6 Duratec Ti-VCT (105 PS), Durashift 5-speed manual	Stage V	1307	1825	2525	700	650
1.6 Duratec Ti-VCT (125 PS), Powershift 6-speed Auto	Stage V	1340	1825	2825	1000	670
1.6 EcoBoost (150 PS) (Start-Stop), Durashift 6-speed manual	Stage V	1357	1900	3400	1500	675
1.6 EcoBoost (182 PS) (Start-Stop), Durashift 6-speed manual	Stage V	1357	1900	3400	1500	675
2.0 EcoBoost (250 PS), Durashift 6-speed manual	Stage V	1461	2025	n/a	n/a	n/a
1.6 Duratorq TDCi (95 PS) (Start-Stop), Durashift 6-speed manual	Stage V + DPF	1362	1900	3100	1200	680
1.6 Duratorq TDCi 99g (105 PS) (Start-Stop), Durashift 6-speed manual	Stage V + DPF	1374	1900	2200	300	300
1.6 Duratorq TDCi 88g (105 PS) (Start-Stop), Durashift 6-speed manual	Stage V + DPF	1374	1900	2200	300	300
1.6 Duratorq TDCi (115 PS) (Start-Stop), Durashift 6-speed manual	Stage V + DPF	1368	1900	3100	1200	680
2.0 Duratorq TDCi (140 PS), Durashift 6-speed manual	Stage V + DPF	1460	2050	3550	1500	730
2.0 Duratorq TDCi (140 PS), Powershift 6-speed Auto	Stage V + DPF	1471	2050	3550	1500	735
2.0 Duratorq TDCi (163 PS), Durashift 6-speed manual	Stage V + DPF	1460	2050	3550	1500	710
2.0 Duratorq TDCi (163 PS), Powershift 6-speed Auto	Stage V + DPF	1471	2050	3550	1500	735

<sup>a</sup>Represents the lightest kerbweight assuming driver at 75 kg, full fluid levels and 90% fuel levels, subject to manufacturing tolerances and options, etc., fitted. **Towing limits** quoted represent the maximum towing ability of the vehicle at its Gross Vehicle Mass to restart on a 12 per cent gradient at sea level. The performance and economy of all models will be reduced when used for towing. **Nose weight limit** is a maximum of 75 kg on all models. **Gross Train Mass** includes trailer weight.

## Dimensions

	5-door	Estate
Overall length (mm)	4358 (4362**)	4556 (4566**)
Overall width with mirrors (mm)	2010	2010
Overall width with mirrors folded (mm)	1858	1858
Overall height without/with roof rails (unladen) (mm)	1484/–	–/1505
Minimum distance between wheel arches (in luggage compartment) (mm)	1030	1149
Turning circle – kerb to kerb (m)	11.0 (12.0**)	11.0 (12.0**)
Luggage capacity (litres)		
5-seat mode (laden to package tray) (with mini spare)	316	476
5-seat mode (laden to package tray) (with 16" steel spare)	277	n/a
2-seat mode (laden to roof) (with mini spare)	1101	1502
2-seat mode (laden to roof) (with 16" steel spare)	1062	n/a
Fuel tank capacity (litres)		
Petrol	55 (62**)	55 (62**)
Diesel	53*	53*

<sup>a</sup>Measured in accordance with ISO 3832. Dimensions may vary dependent on the model and equipment fitted. \*60 litres for 2.0 Duratorq TDCi engines. \*\*ST figure.

## Insurance Groups

	Studio	Edge	Zetec	Zetec S	Titanium	Titanium X	ST-1	ST-2	ST-3
5-door									
1.0 EcoBoost (100 PS) (Start-Stop), Durashift 5-speed manual	–	10E	11E	–	11E	12E	–	–	–
1.0 EcoBoost (125 PS) (Start-Stop), Durashift 6-speed manual	–	–	14E	14E	14E	15E	–	–	–
1.6 Duratec Ti-VCT (85 PS), Durashift 5-speed manual	7E	–	–	–	–	–	–	–	–
1.6 Duratec Ti-VCT (105 PS), Durashift 5-speed manual	–	11E	11E	–	–	–	–	–	–
1.6 Duratec Ti-VCT (125 PS), Powershift 6-speed Auto	–	12E	14E	14E	14E	–	–	–	–
1.6 EcoBoost (150 PS) (Start-Stop), Durashift 6-speed manual	–	–	–	–	19E	–	–	–	–
1.6 EcoBoost (182 PS) (Start-Stop), Durashift 6-speed manual	–	–	–	25E	–	26E	–	–	–
2.0 EcoBoost (250 PS), Durashift 6-speed manual	–	–	–	–	–	–	34E	35E	36E
1.6 Duratorq TDCi (95 PS) (Start-Stop), Durashift 6-speed manual	–	11E	–	–	–	–	–	–	–
1.6 Duratorq TDCi 99g (105 PS) (Start-Stop), Durashift 6-speed manual	–	14E	15E	–	15E	–	–	–	–
1.6 Duratorq TDCi 88g (105 PS) (Start-Stop), Durashift 6-speed manual	–	14E	–	–	–	–	–	–	–
1.6 Duratorq TDCi (115 PS) (Start-Stop), Durashift 6-speed manual	–	15E	15E	15E	15E	15E	–	–	–
2.0 Duratorq TDCi (140 PS), Durashift 6-speed manual	–	–	19E	–	19E	–	–	–	–
2.0 Duratorq TDCi (140 PS), Powershift 6-speed Auto	–	–	19E	–	19E	–	–	–	–
2.0 Duratorq TDCi (163 PS), Durashift 6-speed manual	–	–	–	21E	–	22E	–	–	–
2.0 Duratorq TDCi (163 PS), Powershift 6-speed Auto	–	–	–	21E	–	22E	–	–	–
Estate									
1.0 EcoBoost (100 PS) (Start-Stop), Durashift 5-speed manual	–	10E	11E	–	11E	12E	–	–	–
1.0 EcoBoost (125 PS) (Start-Stop), Durashift 6-speed manual	–	–	14E	14E	14E	15E	–	–	–
1.6 Duratec Ti-VCT (105 PS), Durashift 5-speed manual	–	11E	11E	–	–	–	–	–	–
1.6 Duratec Ti-VCT (125 PS), Powershift 6-speed Auto	–	12E	14E	14E	14E	–	–	–	–
1.6 EcoBoost (150 PS) (Start-Stop), Durashift 6-speed manual	–	–	–	–	19E	–	–	–	–
1.6 EcoBoost (182 PS) (Start-Stop), Durashift 6-speed manual	–	–	–	25E	–	26E	–	–	–
2.0 EcoBoost (250 PS), Durashift 6-speed manual	–	–	–	–	–	–	34E	35E	36E
1.6 Duratorq TDCi (95 PS) (Start-Stop), Durashift 6-speed manual	–	11E	–	–	–	–	–	–	–
1.6 Duratorq TDCi 99g (105 PS) (Start-Stop), Durashift 6-speed manual	–	14E	15E	–	15E	–	–	–	–
1.6 Duratorq TDCi 88g (105 PS) (Start-Stop), Durashift 6-speed manual	–	14E	–	–	–	–	–	–	–
1.6 Duratorq TDCi (115 PS) (Start-Stop), Durashift 6-speed manual	–	15E	15E	15E	15E	15E	–	–	–
2.0 Duratorq TDCi (140 PS), Durashift 6-speed manual	–	–	19E	–	19E	–	–	–	–
2.0 Duratorq TDCi (140 PS), Powershift 6-speed Auto	–	–	19E	–	19E	–	–	–	–
2.0 Duratorq TDCi (163 PS), Durashift 6-speed manual	–	–	–	21E	–	22E	–	–	–
2.0 Duratorq TDCi (163 PS), Powershift 6-speed Auto	–	–	–	21E	–	22E	–	–	–

**E** = Exceeds security requirement for model concerned and group rating has been reduced. Insurance ratings are issued by the Association of British Insurers and are shown above on both the (outgoing) 1-20 and (new) 1-50 rating scales.



# Specifications

## Colour and trim

Model	Studio	Edge	Zetec	Zetec S	Titanium		
Trim	Rack in Charcoal Black	Rack in Charcoal Black	Rack in Charcoal Black	Rack in Charcoal Black	Zetec S Interior Pack	Pur in Charcoal Black	Windsor Leather
Seat bolster trim and colour	Gecko in Warm Steel	Gecko in Warm Steel	Gecko in Metal Grey	Gecko in Metal Grey	–	Lux in Charcoal Black	Windsor Nappa leather in Charcoal Black with contrast stitching
Instrument panel colour: Upper	Charcoal Black	Charcoal Black	Charcoal Black	Charcoal Black	–	Charcoal Black	Charcoal Black
Instrument panel colour: Lower	Charcoal Black	Charcoal Black	Charcoal Black	Charcoal Black	–	Charcoal Black	Charcoal Black
Solid							
Race Red	●	●	●	●	○	●	●+
Frozen White	○	○	○	○	○	○	○
Metallic							
Burnished Glow	–	○	○	○	–	○	○
Candy Red	–	○	○	○	○	○	○
Micastone	–	○	○	○	○	○	○
Tangerine Scream	–	–	–	–	–	–	–
Ink Blue	–	○	○	○	○	○	○
Lunar Sky	–	–	–	–	–	○	○
Midnight Sky	–	–	○	○	○	○	○
Moondust Silver	○	○	○	○	○	○	○
Panther Black	○	○	○	○	○	○	○
Spirit Blue	–	–	–	–	–	–	–

● = Standard, ○ = Option at extra cost, – = Not available.  
\*Frozen White solid body colour, metallic body colours, partial leather trim, and leather trim are options at extra cost.<sup>1)</sup>Full leather trim includes premium Nappa leather seat trim, full leather-trimmed door panel inserts and leather-trimmed centre armrest.<sup>2)</sup>Available on Saarlouis production vehicles only.

Titanium X		ST-1	ST-2	ST-3			
Pur in Charcoal Black	Windsor Leather	Lux in Charcoal Black	Protection on Lux in Smoke Storm	Protection on Lux in Tangerine Scream	Protection on Lux in Spirit Blue	Protection on Lux in Race Red	Windsor leather in Charcoal Black
Torino leather in Charcoal Black	Windsor Nappa leather in Charcoal Black with contrast stitching	Volume in Anthracite	Lux in Smoke Storm	Lux in Tangerine Scream	Lux in Spirit Blue	Lux in Race Red	Windsor leather in Charcoal Black
Charcoal Black	Charcoal Black	Charcoal Black	Charcoal Black	Charcoal Black	Charcoal Black	Charcoal Black	Charcoal Black
Charcoal Black	Charcoal Black	Charcoal Black	Charcoal Black	Charcoal Black	Charcoal Black	Charcoal Black	Charcoal Black
●	●+	●	–	–	–	●	●
○	○	○	○	–	–	–	○
○	○	–	–	–	–	–	–
○	○	–	–	–	–	–	–
○	○	–	–	–	–	–	–
–	–	–	–	○	–	–	○
○	○	–	–	–	–	–	–
○	○	–	–	–	–	–	–
○	○	○	○	–	–	–	○
○	○	○	○	–	–	–	○
–	–	–	–	–	○	–	○

## Ford Warranty and Servicing Plans

	All Focus Models
3-year/60,000miles* Ford Protect Classic Plan Warranty	●
1-year/unlimited miles* Ford Assistance Roadside Cover (UK and Europe)	●
2 years/2 services or 3 years/3 services* Ford Protect Premium Plan, including scheduled servicing and extended Ford Assistance	○
1-year/unlimited miles* Paint Warranty	●
12-year/unlimited miles* Perforation Warranty	●

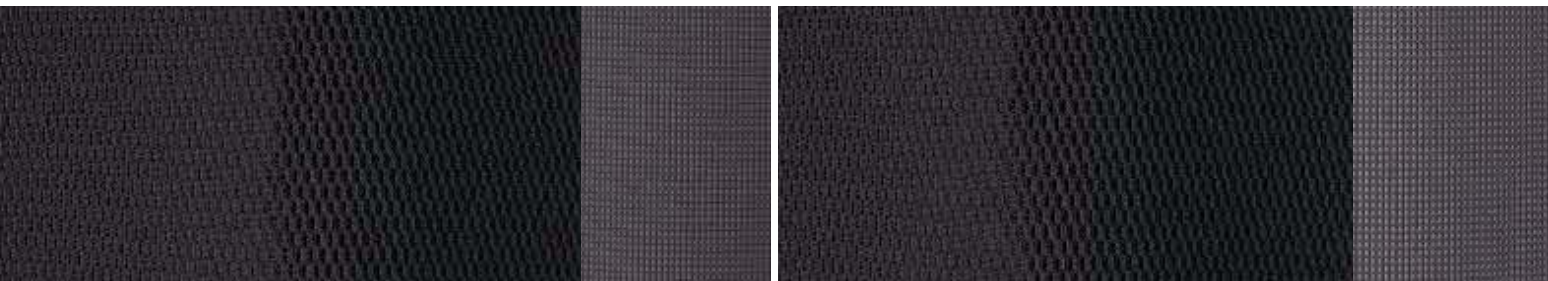
● = Standard. ○ = Optional, at extra cost.  
\*From the date of first registration. Subject to terms and conditions.



# Make it yours

56

Choosing the colour and trim for your new Ford Focus is an opportunity to make it just exactly that – yours!



## Studio/Edge

Seat insert: Rack in Charcoal Black  
Seat bolster: Gecko in Warm Steel



## Zetec S (Optional)

Seat insert: Pur in Soft Charcoal  
Seat bolster: Torino leather in Inferno Red\*

## Zetec/Zetec S

Seat insert: Rack in Charcoal Black  
Seat bolster: Gecko in Metal Grey



## Titanium

Seat insert: Pur in Charcoal Black  
Seat bolster: Lux in Charcoal Black



## Titanium X

Seat insert: Pur in Charcoal Black\*  
Seat bolster: Torino leather in Charcoal Black\*



## Windsor Leather

Charcoal Black leather\*  
(Option for Titanium & Titanium X)

ST1	ST2	ST2	ST2	ST2	ST3
Lux in Charcoal Black seat facing with Volume in Anthracite bolster*	Protection on Lux in Charcoal Black leather seat facing with Lux in Tangerine Scream bolster*	Protection on Lux in Charcoal Black leather seat facing with Lux in Spirit Blue bolster*	Protection on Lux in Charcoal Black leather seat facing with Lux in Race Red bolster*	Protection on Lux in Charcoal Black leather seat facing with Lux in Smoke Storm bolster*	Windsor leather in Charcoal Black seat facing with Windsor leather in Charcoal Black bolster*



**Frozen White\***  
Solid body colour



**Race Red**  
Solid body colour



**Moondust Silver**  
Metallic body colour\*



**Dark Micastone**  
Metallic body colour\*



**Lunar Sky**  
Metallic body colour\*



**Midnight Sky**  
Metallic body colour\*



**Ink Blue**  
Metallic body colour\*



**Panther Black**  
Metallic body colour\*



**Burnished Glow**  
Metallic body colour\*



**Candy Red**  
Pearlescent body colour\*



**Spirit Blue**  
Metallic body colour\*



**Tangerine Scream**  
Special metallic body colour\*

\* Frozen White solid body colour, metallic body colours and leather trim are options at extra cost.

The Ford Focus is covered by the Ford Perforation Warranty for 12 years from the date of first registration. Subject to terms and conditions.

**Note** The car images used are to illustrate body colours only and may not reflect current specification. Colours and trims reproduced within this brochure may vary from the actual colours, due to the limitations of the printing processes used.



# Your new Ford Focus

We have developed a simple four-step plan to help you choose, insure, finance and drive your new Ford Focus.

## Choose

Use the form opposite to specify your new car right down to the wheels, audio, options and accessories, then take it to your Ford Dealer. You can also specify your new car online using the Ford Configurator. It lets you instantly see what your car will look like – inside and out – from multiple angles. And a tally of your choices and their prices helps you keep to your budget. Visit [www.ford.co.uk/SBE/ConfigureYourVehicle](http://www.ford.co.uk/SBE/ConfigureYourVehicle)

## Finance

When it comes to financing your car, our size and expertise means we're well placed to provide you with a wide range of finance products. Ford Credit\*\* provides straightforward finance products for your car whether you are a private or business user. Ford Lease^ provides simple tailored funding solutions for your business. Business users only For more information about our finance products visit [ford.co.uk](http://ford.co.uk)

## Drive

When you drive away in your new car, we're with you all the way. Ford has the largest authorised service network in the UK to help you keep your car in the best condition. And should your new Ford ever require accident repair, a Ford Accident Repair Centre is the best place to get your car back to its pre-accident condition and on the road as quickly as possible.

## Contact

Ford Credit Customer Services 0845 712 5490  
Ford Lease Customer Services 0844 600 1405

Bodystyle:

Series:

Engine:

Transmission:

Colour:

Trim:

Wheels:

Audio:

Options:

Option Packs:

Accessories:

Finance:

\*\* Finance subject to status. Guarantee/indemnities may be required. Freepost Ford Credit.

^Ford Lease is provided by ALD Automotive Ltd, trading as Ford Lease, Oakwood Park, Lodge Causeway, Fishponds, Bristol, BS16 3JA. ALD Automotive is registered in England No. 987418. For the purposes of the Data Protection Act 1998 the data controllers in relation to any information you supply are Ford Motor Company Limited, FCE Bank plc and ALD Automotive. Finance subject to status. Guarantees and indemnities may be required. ALD Automotive is authorised and regulated by the Financial Services Authority.

To configure your Ford online visit  
[www.ford.co.uk/SBE/ConfigureYourVehicle](http://www.ford.co.uk/SBE/ConfigureYourVehicle)  
To look at finance for your Ford visit  
[www.fordcredit.co.uk/BuyingAndProtectingYourFord](http://www.fordcredit.co.uk/BuyingAndProtectingYourFord)  
Business users visit [www.ford.co.uk/FordForBusiness](http://www.ford.co.uk/FordForBusiness)





**Illustrations, descriptions and specifications.** This catalogue was correct at the time of going to print. However, Ford policy is one of continuous product development. The right is reserved to change specifications, colours and prices of the models and items illustrated and described in this publication at any time. For the latest details always consult your Ford Dealer. **Optional equipment.** Throughout this publication, wherever a feature is described as being an 'Option' or 'Option Fitment/Pack' etc, you should assume that it will be at extra cost to the base vehicle, unless specifically stated to the contrary. All models and colour combinations are subject to availability. **Note.** Some images portrayed are of a pre-production model and/or are computer generated, therefore, the design/features on the final version of the vehicle may differ in various respects. In addition, some of the features shown on the vehicles may be optional. **Note.** This brochure contains both original Ford accessories as well as a range of products from our suppliers. **Note.** The Bluetooth® word mark and logos are owned by the Bluetooth SIG, Inc. and any use of such marks by Ford Motor Company is under licence. The iPod word mark and logos are the property of Apple Inc. Other trademarks and trade names are those of their respective owners.

✦The identified accessories are carefully selected third party supplier branded accessories which do not come with a Ford warranty but are instead covered by the third party supplier's own warranty, the details of which can be obtained from your Ford Dealer

The Government fuel figures do not express or imply any guarantee of the fuel consumption of any particular vehicle. The vehicles themselves have not been tested and there are inevitably differences between individual vehicles of the same model. In addition, a vehicle may incorporate particular modifications. Furthermore, the driver's style and road and traffic conditions, as well as the extent to which the vehicle has been driven and the standard of maintenance, will affect its fuel consumption. **Insurance groups** are only as recommended by the Association of British Insurers. You should always consult your insurance adviser for confirmation.

**Note** Some driver assistance features and safety features described in this brochure are designed to function using sensors, whose performance may be affected under certain weather or environmental conditions.

**Note** Ford Focus estate does not provide a cargo net or attachment points for it behind the first seat row, but behind the second seat row only.



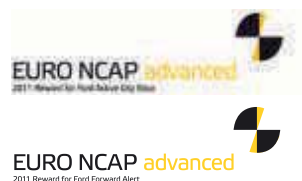
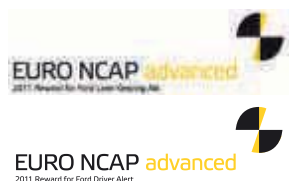
**International Engine of the Year**  
Ford 1.0-litre EcoBoost



**New Engine**  
Ford 1.0-litre EcoBoost



**Sub 1-litre**  
Ford 1.0-litre EcoBoost



#### Ford One Call

In the unlikely event that your Ford Dealer can't help you or if you need to speak to us directly, call 0203 564 4444

#### Ford Rental - local service nationwide

Car and Van rental from our latest model range. Contact your local Ford Dealer for more information

#### Ford Motability

Our dedicated care centre provides free information on all motoring and mobility issues, including special offers for HRDLA and Motability recipients. Call free on 0845 6040019

#### Finance and Insurance

Ford Credit Customer Services 0845 712 5490  
Ford Lease Customer Services 0844 600 1405  
Ford Insure 08000480950



Ford and BP – working together to reduce fuel consumption and emissions.



Collect Nectar points at participating Ford Dealers and Authorised Repairers now. So take a look at the latest Ford Service Promotions by visiting the Owner Services section within [www.ford.co.uk](http://www.ford.co.uk).



Published by Ford Motor Company Limited,  
Brentwood, Essex, England.  
Registered in England No. 235446.  
FA 1564/4  
BJN 201856. FoE H53E.  
PN 272502/0113/117m/GBR en  
January 2013.  
© Ford Motor Company Limited.

[www.ford.co.uk](http://www.ford.co.uk)