

FORD **TRANSIT CONNECT**



Go Further

Professional workmate

Main image: Transit Connect
SWB Trend Van

Options: metallic paint (no
charge option on Trend, Limited)



Tough design and a no-nonsense attitude. A civilised cabin environment with a host of car-like features. The choice of short or long wheelbase options. And an appetite for hard work. That's the unbeatable Ford Transit Connect Van.





Short and Long Wheelbase

With short and long wheelbase options, a large functional load box, and up to 4.3 cubic metres of versatile loadspace with the passenger seat folded, the Ford Transit Connect Van will keep your business on the move.

SWB Van

- 2467 mm maximum load length
- 847 kg gross payload (T220), 652 kg (T200)
- 3.40 cu.m loadspace (passenger seat folded)
- Space for two Europallets*
- Room to stow a 2.4 m pipe with the passenger seat folded
- Turning circle 11.0 m (kerb to kerb)

LWB Van

- 2714 mm maximum load length
- 908 kg gross payload (T230), 652 kg (T200)
- 4.3 cu.m loadspace (passenger seat folded)
- Space for 2.4 m x 1.2 m building boards when loaded diagonally
- Room to stow a 3 m pipe diagonally with the passenger seat folded
- Turning circle 11.9 m (kerb to kerb)

SWB Crew Van

- 734 kg gross payload
- Second row folding seats
- 1.4 cu.m loadspace
- 909 mm load length

LWB Crew Van

- 783 kg gross payload
- Second row folding seats
- 2.1 cu.m loadspace (second row seats upright)
- 1172 mm load length (second row seat to rear)



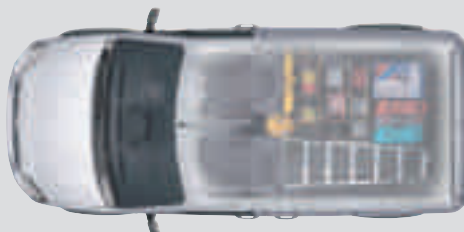
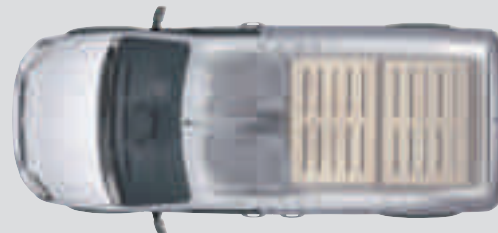
*Without bulkhead fitted.



SWB Trend van.



LWB Trend van.

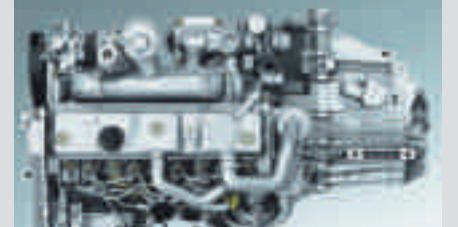


SWB Trend crew van.



LWB Trend crew van.

Duratorq TDCi Euro Stage V engines
Newly-developed Duratorq TDCi diesel engines provide real benefits in terms of reduced emissions, and superior drivability.



The Ford Transit Connect Van sets the standard for light commercial vehicles, engineered to provide a level of rugged durability never before seen in the compact commercial vehicle market.

Powerful partner

Built and tested to Ford's Medium Commercial Vehicle standards, the Ford Transit Connect Van delivers outstanding strength and durability. The extensive use of thick, high-strength steel, a reinforced body shell with partial double-skin sides and twin side cross-members, plus a tough boron steel front cross-member all contribute to its outstanding low cost of ownership and useful vehicle life.

Handling

The independent MacPherson strut front suspension combines with multi-leaf rear springs (single leaf springs on T200 SWB models) to endow the Ford Transit Connect Van with superior handling and roadholding, even when fully loaded. Accurate and responsive rack and pinion, power-assisted steering is fitted as standard and gives the SWB model a turning circle of just 11.0 metres kerb to kerb.

Duratorq TDCi Euro Stage V engines

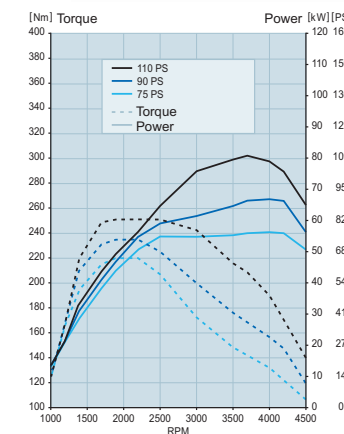
The Ford Transit Connect Van is powered by the latest 1.8-litre Duratorq TDCi Euro Stage V common rail diesel engines. Designed and engineered to deliver the optimum blend of efficient power and economy.

Ford Transit Connect's latest Stage V emissions-compliant engines have a Variable Nozzle Turbo (VNT) for a broader spread of torque, with maximum torque available from as low as 1500 rpm. This means we can increase the final-drive ratio to improve fuel consumption and reduce emissions without affecting driveability. For example, the Stage V 75 PS engine can now achieve up to 47.1 mpg and CO₂ emissions of 159 g/km. We've also reduced soot particles with a new vDPF (vaporiser Diesel Particulate Filter), which, when combined with a new smaller, more efficient catalyst, can reduce soot particles by up to 95 per cent. And, in line with our ease-of-use design philosophy, our Stage V engines do not require any special fuel or additives.



Brakes and wheels

All models are fitted with 15-inch, five-stud wheels (with reinforced tyres on selected versions) for greater load-carrying capacity. Large front and rear disc brakes, combined with standard ABS, help to extend service life and deliver outstanding stopping performance. Electronic Stability Program (ESP) with Hill Start Assist (HSA) is also standard on all vans.



Diesel (FWD)

1.8 Duratorq TDCi available in three power and torque configurations:

- 75 PS/220 Nm
- 90 PS/235 Nm
- 110 PS/280 Nm

Transmission

- 5-speed manual transmission



Flexibility

Ford Transit Connect Van has been designed with the real-world in mind – so it can work harder for you (Vehicle shown with accessory roof rack and metallic paint, at extra cost).

Built-in fixings

Allow the installation of racking systems without further drilling.



Every day the Ford Transit Connect Van proves it has what it takes to get the job done. With a generous load box and outstanding access, thanks to its wide-opening rear doors and available twin sliding side load doors, the Ford Transit Connect Van will handle almost any task you throw its way.

Functional space

Whether you are carrying goods, work materials or tools, the Ford Transit Connect Van provides all the loadspace you will need.

Upright body sides help to make the most efficient use of the loadspace, particularly when racking is used.

Minimal rear wheel arch intrusion translates into a huge 1226 mm of clear load-floor width – enough to carry two Europallets in the short wheelbase version, or a stack of 2.4 m x 1.2 m building boards* in the LWB version.

*When stored diagonally

Standard features include:

- 1226 mm minimum width between rear wheel arches
- Flat side panels, ideal for signwriting
- Pre-threaded reinforced fixing points allow easy installation of universal racking systems or shelving without the need to drill holes into the vehicle
- Six DIN compliant floor tie-down eyes allow loads to be securely fixed
- Fold-flat front passenger seat provides a level cargo area for longer items, and doubles up as a handy work surface or table
- Full height folding mesh bulkhead
- Load floor liner

Optional features include:

- Range of bulkhead options
- Purpose-designed roof rack
- Roof rack crossbars
- Ladder holder and rollers
- 250° rear cargo doors for wide-open access
- Rear tailgate (SWB only)
- Attitude/ride height pack (high payload vans, not T200 models)

Folding DIN compliant mesh bulkhead

Allows longer items to be carried and protects the driver against shifting loads. (Standard)



Sliding side load doors

None, one or two side load doors available. Unglazed or glazed. (Option)



DIN compliant tie-down eyes
(Standard)



Underseat stowage tray

Keeps items out of sight beneath the front passenger's seat. (Option, not available with standard fold flat passenger's seat)



Tailgate

Unglazed or glazed. Privacy glass, heated window and wash/wipe also available. (Option)



Protecting your business

Your Ford Transit Connect Van is a vital business asset – and we help to ensure it stays that way with some of the most advanced security features available. (Transit Connect LWB Trend Van shown)

Door mirrors

Large door mirrors, with blind-spot eliminators, fold flat to avoid accidental damage when parked.



The Ford Transit Connect Van is engineered to the highest possible levels of strength and durability for your peace of mind.

Safety and security

The Ford Transit Connect Van has been designed to offer outstanding vehicle and occupant safety. Advanced computer modelling led to the development of a body structure that combines energy-absorbing crumple zones with a rigid shell for maximum occupant protection.

High-strength steel beams inside the front doors help to prevent intrusion in a side impact, while behind the front bumper is a boron steel cross-member that is designed to absorb and safely channel crash energy away from the occupants.

Security is paramount in a commercial vehicle. So the Ford Transit Connect Van incorporates a combination of state-of-the-art features to make it highly secure.

Standard safety features include:

- Driver's airbag
- Height-adjustable inertia reel seat belts with grabbers and driver's seat belt pre-tensioner
- Anti-submarining ramps in front seat bases
- Anti-lock brakes with electronic brake-force distribution
- Electronic Stability Program (ESP)
- Hazard Warning Lights: the turn indicators flash under heavy braking as a warning to following drivers
- Height-adjustable head restraints

Optional safety features:

- Passenger's airbag* (includes passenger airbag deactivation switch)
- Side airbags* (not available with fold-flat passenger's seat)

Standard security features:

- Ford's Safeguard Passive Anti-Theft System (PATS) engine immobiliser
- High-security shielded locks with strengthened mountings
- Unique lock-in-latch door lock system eliminates cables and rods between the lock and the latch
- Central/double locking
- Remote keyless entry with rolling codes
- Key-operated bonnet release
- Locking fuel cap
- Visible Vehicle Identification Number (VIN)

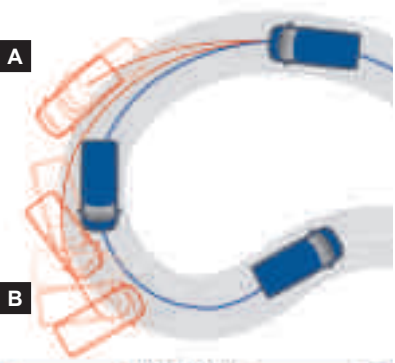
Optional security features:

- Perimeter alarm with volume sensing
- Choice of bulkheads

*Note: A rear-facing child seat should never be placed in the front passenger seat when the Ford vehicle is equipped with an operational front passenger's airbag.

Occupant safety

Single-stage driver's airbag is fitted as standard.



The Ford Transit Connect Van now comes with standard Electronic Stability Programme (ESP).

- Vehicle with ESP.
- Vehicle without ESP.

A Vehicle experiences understeer on approach.

B Vehicle experiences oversteer on exit of bend.

Lockable bonnet

Can only be released using the vehicle key. The mechanism is fully shrouded to resist tampering. (Standard)



Full-height steel bulkhead

Provides added security. Also offered with glazed top panel, as shown. (Option)



Emergency Brake Warning

The hazard warning lights automatically flash during heavy braking, giving following drivers advance warning of a potentially hazardous situation. (Standard)





Model shown is finished in Frozen White and features the optional visibility pack

Transit Connect Van

Built on a dedicated commercial vehicle platform, the hard-working and established Ford Transit Connect Van brings you all that is great about the range: robust construction; flexible loadspace; and a comfortable, car-like driving environment.

Exterior features include:

- 6x15" steel wheels with hub covers
- Torque Grey bumpers
- Tinted glass
- Manually-operated mirrors
- Electrically-operated windows
- Remote central locking
- Passenger-side sliding side load door
- Electronic Stability Programme (ESP)
- Hill Start Assist (HSA)
- Hinged, unglazed rear cargo doors
- Headlight courtesy delay

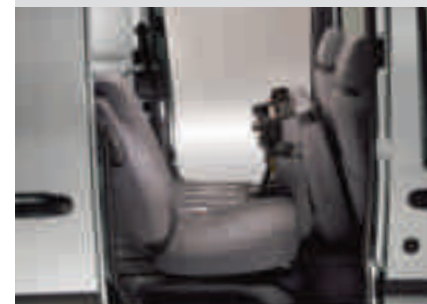
Interior features include:

- New facia design
- Model 6000 RDS EON AM/FM stereo radio/CD with steering column-mounted remote audio controls, AUX-in and 'Keycode' anti-theft coding
- Steering column adjustable for rake/reach
- Fold-flat passenger seat
- Folding mesh bulkhead
- Front seat-back storage pockets
- Trip computer
- Centre storage
- 12-volt front power socket
- 6 DIN-compliant floor tie-down eyes



Second-row seats

When you need to transport more than two people, the Double Cab-in-Van – with three extra seats plus a large load space – has room for everyone.



Load floor mat

Protects both your van and its load. (Standard)



Remote central/double locking

Convenient and secure. (Standard)



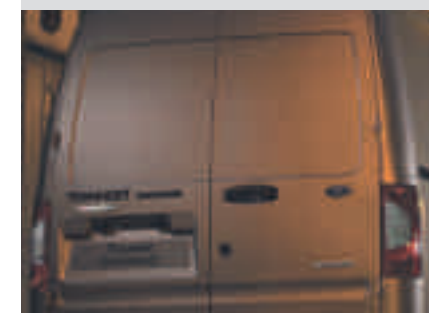
Headlight courtesy delay

Remain illuminated for a short while once you're parked to guide you to your door. (Standard)



Unglazed cargo doors

For added security. (Standard)



Electrically-operated windows

(Standard)



Transit Connect Trend Van

Model shown is finished in Avalon metallic paint (option), glazed full height steel bulkhead. (Option)

The Ford Transit Connect Trend Van might be a new driving experience, but as soon as you get in, everything feels familiar. The well-equipped cabin acquits itself impeccably, because the more comfortable you are, the more productive you will be.

Exterior features additional to Transit Connect Van

- Body colour bumpers
- Front fog lights
- 6x15" steel wheels with full Trend wheel covers
- Metallic paint (no charge option)
- Premium Visibility Pack, including Quickclear heated windscreen, rain sensing wipers, auto headlights, heated washer jets and electrically-operated and heated door mirrors

Interior features additional to Transit Connect Van

- Bluetooth® with Voice Control System with second 12-volt power socket
- 6-way driver's seat with armrest and lumbar support
- Silver finish gearshift knob and radio/CD facia
- Aluminium steering wheel spoke shells
- Overhead full width stowage shelf
- Map reading light
- Brilliant Blue seat trim and instrument panel available as an option

Note The Bluetooth® word mark and logos are owned by the Bluetooth SIG, Inc. and any use of such marks by Ford Motor Company Limited and its associated companies is under licence. Other trademarks and trade names are those of their respective owners.
Note It is an offence for drivers to use a hand-held mobile phone or similar device while driving.



Bluetooth® wireless technology

Wireless mobile phone connection with voice recognition control for audio, phone and climate control. (Standard)



Interior design

Trend Van features aluminium trim accents. (Standard)



6-way adjustable driver's seat with armrest and lumbar support
(Standard)



Trip computer

Displays information including fuel economy, distance travelled, ambient temperature as well as controlling parts of the van's functionality. (Standard)



Front fog lights

Enhanced visibility in poor driving conditions. (Standard)



Heated door mirrors

(Standard)



Transit Connect Limited Van



Model shown is finished in Avalon metallic paint (option) and glazed full height steel bulkhead (option).

With outstanding levels of comfort, convenience and functionality, the Ford Transit Connect Limited Van has it all. Great to drive, great to spend time in, it's not only a determined work partner but, with its roomy air conditioned cab, it serves as the ideal mobile office too.

Exterior features additional to Trend Van

- 15" 7 spoke alloy wheels
- Silver front grille
- Body colour door handles
- Rear parking sensors

Interior features additional to Trend Van

- Air conditioning
- Reading light
- Silver gearshift surround
- Leather steering wheel

Note The Bluetooth® word mark and logos are owned by the Bluetooth SIG, Inc. and any use of such marks by Ford Motor Company Limited and its associated companies is under licence. Other trademarks and trade names are those of their respective owners.

***Note:** A rear-facing child seat should never be placed in the front passenger seat when the Ford vehicle is equipped with an operational front passenger's airbag.



Alloy wheels
15" 7-spoke alloy wheels. (Standard)



Air conditioning
With air recirculation feature. (Standard)



Side airbags*
Enhanced protection in a side impact. (Option: available as part of seat pack)



Silver front grille
(Standard)



Rear parking sensors
Makes parking easier. Switches on automatically when reverse gear is selected. (Standard)



Rain-sensing wipers and automatic headlights
(Standard)





Thule® load stop and lockable ladder holder*
For the transportation of ladders, pipes or scantlings – the first choice in commercial usage.

Loadspace liner
Heavy duty liner with raised sidewalls helps to protect your load floor from accidental damage. (Accessory) Image shows Ford Transit Van. Also available on Ford Transit Connect.



Thule® Professional roof carrying systems*
A complete range of Thule transportation products available to suit your needs. Available from your Ford Dealer. (Accessory)



Fixed tow bar
Expand your transport capabilities. (Accessory)



17" alloy wheels
17" 9x2-spoke classic design alloy wheels. (Accessory)



When your vehicle is an integral part of your business, it's important you have the freedom to tailor its specification exactly to your needs. So, every item within our extensive range of options and accessories has been specially developed to help enhance your efficiency and image.

Accessories

Image left shows:

Steel cage roof carrier
Sturdy steel cage roof carrier adds a new dimension to transporting materials and equipment. (Accessory)

Base roof carrier
Roof carrier is the base for all roof transportation attachments (Accessory – not illustrated).

18" alloy wheels
5-spoke design alloy wheels. (Accessory)

ClimAir® wind deflector*
The wind deflector eliminates turbulence, letting you enjoy your drive with the front windows down – even when it's raining. (Accessory)

Rear window protection grille
Grille secures to inside of rear windows for enhanced security without obscuring rearward vision. (Option and accessory)

Image below shows:

Waeco® Dometic cooling fridge*
Efficient, tailor-made cooling box uses 12-volt onboard system with integrated gel battery or, when parked, 230-volt mains supply. Maintains constant temperature of around 2°C at ambient temperature of 30°C. Total gross volume approximately 900 litres. Certified by ATP for food transport within Europe. (Accessory – requires optional Dual Side Load Doors).

Note The Bluetooth® word mark and logos are owned by the Bluetooth SIG, Inc. and any use of such marks by Ford Motor Company Limited and its associated companies is under licence. Other trademarks and trade names are those of their respective owners.

*Please see back cover for warranty information



MS Design® Sport styling accessories*
Front and rear bumper styling parts in contrasting Silver. (Accessory)



Mobile navigation
Leave your maps behind with a simple and intuitive mobile GPS navigation system. Please contact your Ford Dealer for details. (Accessory)



Parrot® Bluetooth® hands-free kits*
These Bluetooth® hands-free kits connect to the original audio system. Example shown is a MKi9200 with 2.4" colour TFT screen, built-in voice recognition and automatic phonebook synchronisation. It displays your mobile phone information and the caller's photos. (Accessory)



Making life easy

Our range of finance, insurance, service and assistance options is designed with just one thing in mind – making life easy for you.

Commercial Vehicle Finance

At Ford, we can help you find the right vehicle to suit your needs, whether its for business or pleasure. Our wide range of competitive finance products can help you get on the road – quickly and easily.

Ford Credit

Provides a range of traditional finance products for customers who are interested in Commercial Vehicle ownership.

Ford Lease

Specialises in contract hire and leasing and provides an alternative range of finance products aimed at business customers (business users only).

Both are part of one of the world's biggest names in automotive finance, and can offer you affordable, flexible and innovative products.

Ford Insure** is our comprehensive van insurance product designed especially for Ford drivers.

For more information visit www.fordinsure.co.uk or call Ford Insure 0800 0480 957

Important information:
Ford Credit : Finance subject to status. Guarantees may be required. Freepost Ford Credit.

Ford Lease : Ford Lease is provided by ALD Automotive Ltd, trading as Ford Lease, Oakwood Park, Lodge Causeway, Fishponds, Bristol, BS16 3JA. ALD Automotive is registered in England No. 987418. For the purposes of the Data Protection Act 1998 the data controllers in relation to any information you supply are Ford Motor Company Limited, FCE Bank Plc and ALD Automotive. Finance subject to status. Guarantees and indemnities may be required. ALD Automotive is authorised and regulated by the Financial Services Authority.

**FCE Bank plc (Company No. 0772784). Registered in England, Central Office, Eagle Way, Brentwood, Essex CM13 3AR. Ford Insure is administered and underwritten by Royal & Sun Alliance Insurance plc which is authorised and regulated by the Financial Services Authority. FCE Bank plc is authorised and regulated by the Financial Services Authority and acts as an insurance intermediary in relation to Ford Insure. In relation to this same product, Ford Motor Company Limited is an appointed representative of FCE Bank plc. Ford Motor Company Limited acts as an insurance intermediary. Calls may be recorded and monitored.

Services

There are 222 Sales and 245 Aftersales Ford Transit Specialist Dealers across the UK, equipped and trained to meet Commercial Vehicle customer requirements. From these, 113 Sales and 95 Aftersales Dealers have achieved the 'Backbone standard' as recognition of their total commitment to delivering dedicated and professional sales and service support.

To find the location of your nearest Ford Transit Specialist Dealer, simply call the Ford Information Service on 0845 7111 888, or visit the Ford Dealer locator at www.fordvans.co.uk

Ford Protect Every new Ford Fiesta Van is protected by a 3-year/60,000-mile Ford Protect Classic Warranty Plan, and also comes with a 1-year Ford Assistance package.

Ford Ranger is protected by a 3-year/60,000 mile Ford Protect Classic Warranty Plan.

Ford Transit and Transit Connects are protected by a 3-year/100,000-mile bumper-to-bumper warranty.

Ford Transit Chassis Cab One-Stop bodywork is covered by a 3-year/100,000-mile warranty and a 3-year Perforation Warranty provided by the bodywork supplier.

Ford Perforation Warranty All New Ranger and Fiesta Van are covered by the Ford Perforation Warranty for 12 years from the date of first registration. Ford Transits, produced from the 1st March 2012, are covered by 12 years from the date of first registration. Ford Transit Connect and Tourneo Connect are covered for 10 years from the date of first registration. Subject to terms and conditions. Please see your Ford Transit Specialist Dealers for details.

Ford Assistance Ford Transits, Transit Connects and Rangers are supplied with a minimum of a 1-year Ford Assistance roadside package. Further details are available either on www.ford.co.uk or from your local Ford Dealer.

Ford Rapid Fit Our 'no appointments necessary, while-you-wait' fast-fit service for exhausts, brakes, batteries and more, at over 240 sites nationally.

Ford Accident Repair Centres Approved Ford Accident Repair Centres meet rigorous Ford standards and are the best place to return your vehicle to its pre-accident condition.

Contacts

Ford Customer Relationship Centre In the unlikely event that your Ford Dealer can't help you or if you need to speak to us directly, call 0845 841 1111 at local rates.

Ford Rental – local service nationwide Car and van rental from our latest model range. Contact your local Ford Dealer for more information.

Talkback – the company car drivers' club This is your club for extended test drives, special events, and advice on tax and buying issues. Join free, even if you don't drive a Ford, on www.talkbackclub.com or call 0845 605 55 66.

Ford Mobility Our MAGIC care centre provides free information on all motoring and mobility issues, including special offers for HRDLA and Motability recipients. Call free on 0800 240 241.

*Subject to terms and conditions.



Ford ECOnetic Technology

The Ford ECOnetic Technology initiative is designed to reduce the cost of running your vehicle through improved fuel economy and lower CO₂ emissions without compromising on style, performance or driving quality.

Affordable and available now

Significant advances in the efficiency of our engines and other innovations such as those shown below combine to help improve performance and fuel economy, and help you to adjust your driving style to achieve further savings*. Many of these technologies have been combined in the Ford Transit ECOnetic model, which achieves an impressive 173 g/km CO₂ with no loss of capacity or performance. The scope of the Ford ECOnetic Technology initiative has recently been expanded to include electric, hybrid-electric and plug-in hybrid-electric vehicles, as well as company-wide sustainability programmes.

Creating a cleaner tomorrow

At Ford, we've been quietly getting on with the job of reducing our impact on the environment. For example, solar/photovoltaic panels on the roof of our Bridgend engine plant in Wales generate enough power to light an area of around 10,000 square metres, and to reduce landfill, almost 300 parts used in Ford vehicles manufactured in Europe are made from recycled non-metallic materials – potentially avoiding 17,000 tonnes of waste every year.

If you would like to know more, logon to: www.ford.co.uk/FordECOneticTechnology

*The availability of Ford ECOnetic Technology varies by model in the Ford commercial vehicle range. Please ask your Ford Dealer for details

CVS

Smart Regenerative Charging

Helps keep the battery charged in the most efficient way – reducing the amount of fuel used.

Ford Auto-Start-Stop

Automatically switches off the engine when you come to a halt and restarts smoothly when you want to move off, reducing fuel consumption and CO₂ emissions by up to ten per cent.

New Duratorq TDCi Stage V engines

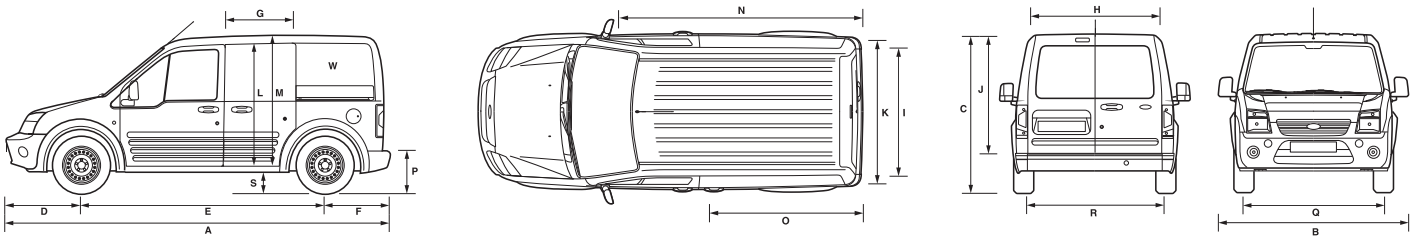
Engineered to meet stringent EU Stage V emissions standards, these highly fuel-efficient engines are offered with an impressive choice of power and torque outputs.

Shift Indicator

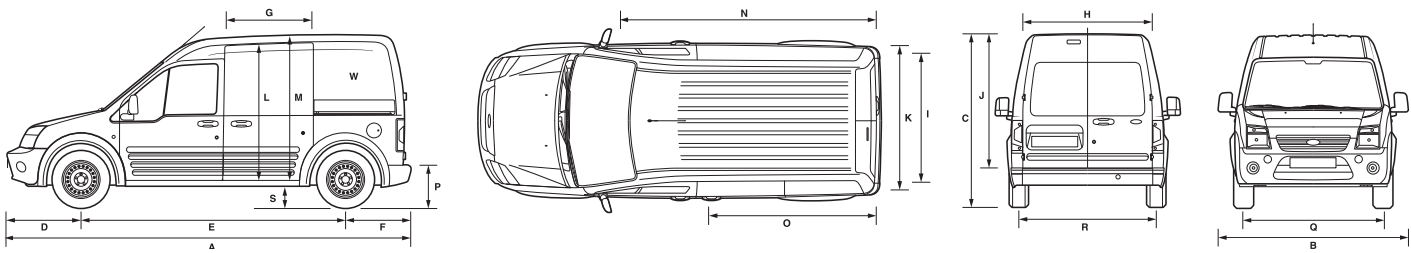
A light in the instrument cluster tells you when to shift gears, helping you to use less fuel while also encouraging a smoother driving style (available on all diesel models).



Ford Transit Connect Van SWB Low Roof



Ford Transit Connect Van LWB High Roof



Dimensions (mm)

	Transit Connect SWB		Transit Connect LWB	
	Low Roof Van	Low Roof SWB Crew Van	High Roof Van	High Roof LWB Crew Van
A	Overall length			
B	Overall width without mirrors			
B	Overall width with mirrors			
C	Overall height (laden/unladen)			
D	Front overhang			
E	Wheelbase			
F	Rear overhang			
G	Side door entry width			
H	Rear door opening width below belt			
I	Loadspace width between wheel arches			
J	Rear door opening height			
K	Loadspace width			
L	Side door opening height			
M	Load floor to roof			
N	Loadspace length (max) (passenger's seat folded)			
O1	Loadspace length (laden to belt line)			
O2	Loadspace length (back of front seat)			
O3	Loadspace length (passenger's fold flat seat up)			
O4	Loadspace length (2nd row seat to rear)			
O4	Loadspace length (2nd row seat folded)			
P	Loading height (laden/unladen)			
Q	Front track			
R	Rear track			
S	Ground clearance			
T1	Cargo volume			
T2	Cargo volume (front passenger seat folded)			
T3	Cargo volume (2nd row seat up)			
T4	Cargo volume (2nd row seat folded)			

Dimensions (mm)

	Transit Connect SWB		Transit Connect LWB	
	Low Roof Van	Low Roof SWB Crew Van	High Roof Van	High Roof LWB Crew Van
Additional information				
Interior – Front				
Effective headroom	1147	1147	1304	1304
Maximum effective leg room	1008	1008	1008	1008
Shoulder room	1382	1382	1382	1382
Hip room	1284	1284	1284	1284
Interior – Rear (Crew Van only)				
Effective headroom	–	1099	–	1099
Maximum effective leg room	–	979	–	979
Shoulder room	–	1536	–	1536
Hip room	–	1553	–	1553
Loadspace length (2nd row seat to rear)	–	909	–	1172

Key: All dimensions (shown in mm) are subject to manufacturing tolerances and refer to minimum specification models and do not include additional equipment. These illustrations are for guidance only. Dimensions may vary dependent on the model and equipment fitted.

Model availability

	SWB Van	Trend	Limited	LWB Van	Trend	Limited
Transit Connect						
1.8 Duratorq TDCi Diesel 75 PS	●					
1.8 Duratorq TDCi Diesel 90 PS	●	●		●	●	
1.8 Duratorq TDCi Diesel 110 PS	●	●	●	●	●	●
Transit Connect Crew Van						
1.8 Duratorq TDCi Diesel 75 PS	●					
1.8 Duratorq TDCi Diesel 90 PS	●	●		●	●	
1.8 Duratorq TDCi Diesel 110 PS	●	●		●	●	

● = Standard. **Note:** Transit Connect engines are Stage V emissions level.

Weights and loads

	Gross payload ^o	Gross vehicle mass (kg)	Kerb mass (kg)*	Front axle kerb mass (kg)	Rear axle kerb mass (kg)	Axle ratio	Max. GTM (kg) with quoted axle ratio
T200 SWB Low Roof Van (inc Trend and Limited)							
1.8 Duratorq TDCi Diesel 75 PS	652	2040	1388	834	554	3.80	2840
1.8 Duratorq TDCi Diesel 90 PS	652	2040	1388	834	554	3.80	2840
1.8 Duratorq TDCi Diesel 110 PS	652	2040	1388	834	554	3.80	2840
T220 SWB Low Roof Van (inc Trend)							
1.8 Duratorq TDCi Diesel 75 PS	847	2240	1393	835	558	3.80	3040
1.8 Duratorq TDCi Diesel 90 PS	847	2240	1393	835	558	3.80	3040
1.8 Duratorq TDCi Diesel 110 PS	847	2240	1393	835	558	3.80	3040
T220 SWB Low Roof Crew Van (inc Trend)							
1.8 Duratorq TDCi Diesel 75 PS	734	2240	1506	888	618	3.80	3040
1.8 Duratorq TDCi Diesel 90 PS	734	2240	1506	888	618	3.80	3040
1.8 Duratorq TDCi Diesel 110 PS	734	2240	1506	888	618	3.80	3040
T230 LWB High Roof Van (inc Trend and Limited)							
1.8 Duratorq TDCi Diesel 90 PS	908	2340	1432	850	582	3.80	3140
1.8 Duratorq TDCi Diesel 110PS	908	2340	1432	850	582	3.80	3140
T230 LWB High Roof Crew Van (inc Trend)							
1.8 Duratorq TDCi Diesel 90 PS	783	2340	1557	892	665	3.80	3140
1.8 Duratorq TDCi Diesel 110 PS	783	2340	1557	892	665	3.80	3140

Maximum gradeability – 12% at full GTM; 20% at full GVM. ^o**Gross payload** = Gross vehicle mass, less kerb mass. Represents the lightest kerbweight assuming full fluid levels and 90% fuel levels, subject to manufacturing tolerances and options, etc., fitted. All kerb masses quoted in this brochure are subject to manufacturing tolerances and are for Base models with minimum equipment. Trend and Limited models will have greater kerb masses and, therefore, lower payloads due to the increased amount of standard equipment. Any additional options specified on the vehicle will reduce the payload accordingly. All engines are fitted with a standard vDPF (vaporiser Diesel Particulate Filter).

Engine data

	Engine technical features	Maximum power ^º	Maximum torque ^º
1.8 Duratorq TDCi Diesel 55 kW (75 PS) 1753 cc	4 cylinders in line; SOHC; 8 valves; direct injection with highpressure, common rail, multipoint fuel injection system; variable geometry turbocharger with intercooler; electronic throttle; vDPF	55 kW (75 PS) at 4000 min ⁻¹ (rpm)	220 Nm at 1900 min ⁻¹ (rpm)
1.8 Duratorq TDCi Diesel 66 kW (90 PS) 1753 cc	4 cylinders in line; SOHC; 8 valves; direct injection with highpressure, common rail, multipoint fuel injection system; variable geometry turbocharger with intercooler; electronic throttle; vDPF	66 kW (90 PS) at 4000 min ⁻¹ (rpm)	235 Nm at 1900 min ⁻¹ (rpm)
1.8 Duratorq TDCi Diesel 81 kW (110 PS) 1753 cc	4 cylinders in line; SOHC; 8 valves; direct injection with highpressure, common rail, multipoint fuel injection system; variable geometry turbocharger with intercooler and transient torque overboost function; electronic throttle; vDPF	81 kW (110 PS) at 3700 min ⁻¹ (rpm)	250/280* Nm at 1500-3200 min ⁻¹ (rpm)

ºTested in accordance with ISO 1585. *With transient overboost. Engines comply with stage V emissions standards.

Mechanical features

	SWB Van	Trend	Limited	LWB Van	Trend	Limited
Brakes						
Diagonally-split, with dual-line servo-assistance. Front discs, rear discs	●	●	●	●	●	●
Engine						
vDPF (vaporizer Diesel Particulate Filter)	●	●	●	●	●	●
Speed limiter – 62 mph (100 km/h)	○			○		
Speed limiter – 70 mph (112 km/h)	○			○		
Fuel tank						
Capacity – 60 litres	●	●	●	●	●	●
Steering						
Power-assisted	●	●	●	●	●	●
Suspension and body						
Front – Independent with MacPherson struts, variable rate coil springs, gas-pressurised shock absorbers, and anti-roll bar	●	●	●	●	●	●
Rear – Single leaf springs, gas-pressurised shock absorbers and anti-roll bar	●	●	●	●	●	●
Towing eyes – Front and rear	●	●	●	●	●	●
Turning circle						
Kerb to kerb 11.0 m	●	●	●			
Kerb to kerb 11.9 m				●	●	●

● = Standard, ○ = Option, at extra cost.

Safety and security features

	SWB Van	Trend	Limited	LWB Van	Trend	Limited
Safety						
Anti-lock braking system (ABS) with electronic brake-force distribution (EBD) with rear disc brakes	●	●	●	●	●	●
Emergency Brake Warning	●	●	●	●	●	●
Electronic Stability Programme (ESP) with Hill Launch Assist (HLA)	●	●	●	●	●	●
Side impact door beams, front. Collapsible steering column. Energy absorbing crumple zones, front and rear	●	●	●	●	●	●
Airbag – Driver's	●	●	●	●	●	●
Airbag – Front passenger's* with de-activation switch	○	○	○	○	○	○
Airbags – Front side impact (available as part of seat pack, only available with passenger airbag)	○	○	○	○	○	○
Security						
Alarm – Perimeter	○	○	○	○	○	○
Fuel cap – Locking body colour flap	●	●	●	●	●	●
Immobiliser – Passive Anti-Theft System (PATS)	●	●	●	●	●	●
Locks – High security, lock-in-latch system, shielded with strengthened mountings	●	●	●	●	●	●
Locks – Remote keyless entry	●	●	●	●	●	●
Locks – Central, double locking	●	●	●	●	●	●
Locks – Key operated bonnet release	●	●	●	●	●	●
Vehicle Identification Number (VIN) – Visible	●	●	●	●	●	●

● = Standard, ○ = Option, at extra cost. *Note: A rear-facing child seat should never be placed in the front passenger's seat when the Ford vehicle is equipped with a front passenger airbag.

Wheel availability

	SWB Van	Trend	Limited	LWB Van	Trend	Limited
Wheels – 6x15" steel (full-size spare) and 195/65 R15 tyres	●			●		
Wheels – 6x15" steel with full Trend wheel cover (full-size spare) and 195/65 R15 tyres		●			●	
Wheels – 6x15" 7-spoke alloy wheels (full-size steel spare) and 195/65 R15 tyres	○	○	●	○	○	●

● = Standard, ○ = Option, at extra cost.

Exterior features

	SWB Van	Trend	Limited	LWB Van	Trend	Limited
Exterior appearance and styling						
Bodyside mouldings – One-piece, Torque Grey	●	●	●	●	●	●
Bumpers – Torque Grey	●			●		
Bumpers – Body colour, front and rear (Torque Grey when SVO paint is ordered)		●	●		●	●
Door handles – Body colour			●			●
Front Grille – Silver			●			●
Paint – Metallic	○	●	●	○	●	●
Wheel lip mouldings – Torque Grey	●	●	●	●	●	●
Exterior functional						
Door mirrors – Manual, flat folding, black housings	●			●		
Door mirrors – Enhanced rear vision	●	●	●	●	●	●
Door mirrors – Electrically-operated and heated, black housings	□	●	●	□	●	●
Doors – Tailgate, glazed	○	○	○			
Doors – Hinged rear doors, unglazed (option on Crew Van)	●	●	●	●	●	●
Doors – Hinged rear doors, glazed and heated (standard on Crew Van)	○	○	○	○	○	○
Doors – 250° hinged rear doors (not available with crew van)	○	○	○	○	○	○
Doors – Passenger side sliding load door, unglazed	●	●	●	●	●	●
Doors – Passenger side sliding load door, glazed	○	○	○	○	○	○
Doors – No side sliding load door	○	○	○	○	○	○
Doors – Driver and passenger side sliding load doors, unglazed (standard on Crew Van)	○	○	○	○	○	○
Doors – Driver and passenger side sliding load doors, glazed	○	○	○	○	○	○
Parking distance sensor – Rear	○	○	●	○	○	●
Tinted glass – Front door windows and windscreen only	●	●	●	●	●	●
Tinted glass – Heavy tint privacy, all rear windows		○	○		○	○
Wheels – 6x15" Steel (full-size spare) and 195/65 R15 tyres	●			●		
Wheels – 6x15" Steel with full Trend wheel cover (full-size spare) and 195/65 R15 tyres		●			●	
Wheels – 6x15" 7-spoke alloy wheels (full-size steel spare) and 195/65 R15 tyres	○	○	●	○	○	●
Windscreen – Laminated	●	●	●	●	●	●
Windscreen – Quickclear heated (includes heated washer jets)	□	●	●	□	●	●
Visibility Pack – Quickclear heated windscreen and electrically-operated and heated door mirrors	○			○		
Premium Visibility Pack – Quickclear heated windscreen; electrically-operated and heated door mirrors; automatic headlights; automatic front wipers with rain sensor; instrument panel dimmer; front fog lights		●	●		●	●
Wipers – Front, 2-speed, with intermittent wipe and electric wash	●	●	●	●	●	●
Wipers – Rear, with fixed intermittent wipe and electric wash	○	○	○	○	○	○
Exterior lighting						
Halogen headlights, side lights, rear fog light, reversing light	●	●	●	●	●	●
Headlights – Courtesy delay	●	●	●	●	●	●
Clear side indicators	●	●	●	●	●	●
High-mounted rear brake light	●	●	●	●	●	●
Fog lights – Front		●	●		●	●

● = Standard, ○ = Option, at extra cost, □ = Part of Option Pack, at extra cost.

Interior features

	SWB Van	Trend	Limited	LWB Van	Trend	Limited
Audio						
Island design stereo AM/FM radio/CD – Model 6000 RDS with 24 station pre-sets, 4x17 watts power output, enhanced 'Keycode' anti-theft coding, 2 speakers, AUX connection for external music devices and remote audio controls (silver finish on Trend and Limited)	●	●	●	●	●	●
Bluetooth® hands-free phone and voice control system	○	●	●	○	●	●
CD/SD Navigation System with radio/CD – 5" colour display, 2 speakers, remote audio controls, AUX connection for external music devices, SD memory card slot for data (e.g. music) exchange; Western Europe Navigation map data on SD card	○	○	○	○	○	○
Carpet and trim						
Cab floor covering – Rubber	●	●	●	●	●	●
Door trim – Moulded panel with pull handles and, on front doors only, door bins	●	●	●	●	●	●
Gearshift lever gaiter – Black	●	●	●	●	●	●
Gearshift – Chrome surround			●			●
Gearshift knob – Black with black insert	●			●		
Gearshift knob – Black with silver insert		●	●		●	●
Interior lighting						
Courtesy light – Header-mounted, front door-operated	●			●		
Map reading light in lieu of courtesy light		●	●		●	●
Loadspace compartment light – One, roof mounted	●	●	●	●	●	●
Instruments and controls						
Control stalks – Column-mounted for master lights, indicators and wash/wipe functions	●	●	●	●	●	●
Illuminated heater controls – 4-speed fan. Five vents with temperature and direction control	●	●	●	●	●	●
Instruments – Speedometer, engine temperature, fuel level gauges, tachometer and trip recorder	●	●	●	●	●	●
Warning indicators for oil pressure, direction indicators, glow plugs, main beam, ignition/alternator, brake failure, handbrake on, airbag(s), low fuel level, 'lights on' audible warning, ABS, check engine	●	●	●	●	●	●
Trip computer	●	●	●	●	●	●
Steering wheel – Black	●			●		
Steering wheel – Black with aluminium spoke shells		●			●	
Steering wheel – Leather-trimmed			●			●
Steering column – Rake/reach-adjustable	●	●	●	●	●	●
Seats and seat belts						
Front seat – Driver's 4-way manual adjustment	●			●		
Front seat – Driver's 6-way manual adjustment	○	●	●	○	●	●
Front seat – Driver's armrest and adjustable lumbar support	○	●	●	○	●	●
Front seat – Passenger's 4-way manual adjustment (includes underseat storage) (standard on Crew Van)	○	○	○*	○	○	○*
Front seat – Passenger's fold-flat seat for loadbox extension (not available on Crew Van)	●	●	●	●	●	●
Front seats – Anti-submarining, fully reclining with height-adjustable head restraints	●	●	●	●	●	●
Rear seats – Folding back (Crew Van only)	●	●		●	●	
Seat trim – Fabric	●	●	●	●	●	●
Seat trim – Prima grain vinyl (not available on Crew Van)	○			○		
Seat belts – Front, inertia reel, with grabbers, static buckle and roto-pretensioner (driver's seat only) and height-adjustable mounts	●	●	●	●	●	●
Seat belts – Rear, inertia reel lap and diagonal (Crew Van only)	●	●		●	●	

Interior features

	SWB Van	Trend	Limited	LWB Van	Trend	Limited
Comfort and convenience						
Accessory socket	●	●	●	●	●	●
Air conditioning – With air recirculation	○	○	●	○	○	●
Centre console – Includes coin tray, pen holder and two cup holders	●	●	●	●	●	●
Clock – Digital	●	●	●	●	●	●
Glove box	●	●	●	●	●	●
Heater – Recirculation	●	●	●	●	●	●
Mirror – Dipping rear-view (not available with unglazed rear doors or full-height bulkhead)	●			●		
Mirror – Auto-dimming rear-view (not available with unglazed rear doors or full-height bulkhead)		●	●		●	●
Smoker's Pack – Front ashtray and cigarette lighter	○	○	○	○	○	○
Storage – Centre facia-mounted clipboard holder	●	●	●	●	●	●
Storage – Overhead full-width shelf	○	●	●	○	●	●
Storage – Under passenger's seat (standard with optional 4-way adjustable seat, not available with fold-flat seat)	○	○	○	○	○	○
Sunvisor – Driver's with ticket strap	●	●	●	●	●	●
Sunvisor – Passenger's	●	●	●	●	●	●
Windows – Front, electrically-operated with 'one touch' lowering on driver's side	●	●	●	●	●	●
Loadspace compartment						
Bulkhead – Full width, full height mesh with folding facility (only available with fold flat passenger seat)	●	●	●	●	●	●
Bulkhead – Full width steel, full-height	○	○	○	○	○	○
Bulkhead – Full width steel, full-height with window	○	○	○	○	○	○
Bulkhead – Moveable full width, full-height mesh (Crew Van only) (FCSD option)	○	○		○	○	
Loadspace liner – Floor	●	●	●	●	●	●
Storage – Rear door stowage bin and net (not available with tailgate)		●	●		●	●
Tie-down 'D' rings – Six, complying with DIN 75410 specification	●	●	●	●	●	●
Auxiliary power socket – Loadspace compartment (not available with Crew Van)	○	○	○	○	○	○

● = Standard, ○ = Option, at extra cost, □ = Part of an option pack, at extra cost. The Bluetooth® word mark and logos are owned by the Bluetooth SIG, Inc. and any use of such marks by Ford Motor Company is under licence. Other trademarks and trade names are those of their respective owners. *Only available on Limited series with side airbags and passenger front airbag, at additional cost.

Special Vehicle Options

	SVO Code	SWB Van	Trend	Limited	LWB Van	Trend	Limited
Positive Tyre Selection – Goodyear/Pirelli/Bridgestone	X551/ X552/ X553	⊖	⊖	⊖	⊖	⊖	⊖
All weather tyres (Goodyear Vector 5)	X121	⊖	⊖	⊖	⊖	⊖	⊖
Mud and snow tyres (Goodyear Ultragrip 6)	X859	⊖	⊖	⊖	⊖	⊖	⊖
Delete spare wheel	X026	⊖	⊖	⊖	⊖	⊖	⊖
Attitude/Ride Height Pack (high-payload vans) (not available on T200 models or Crew Van)	X600	⊖	⊖	⊖	⊖	⊖	⊖
Slam locking*, for 4-way fixed passenger seat, contains passenger airbag (not available with Crew Van)	X613	⊖			⊖		
Slam locking B*, for fold flat passenger seat (not available with Crew Van)	X614	⊖			⊖		
Unglazed tailgate	X796	⊖	⊖	⊖			
SVO paint package (pulls self colour bumper)		⊖	⊖		⊖	⊖	

⊖ = Option, at extra cost. *Not available with: passenger airbag, auto headlights, rain sensing wipers, auto dimming mirror, side airbag, heated seats or Bluetooth

Trim and body colour availability

Seat insert/bolster trim and colour	IP/Environment colour	Solid body colours			Metallic body colours*					
		Frozen White	Race Red¹	Blazer Blue	Moondust Silver	Avalon*²	Panther Black	Ink Blue	Midnight Sky	Mars Red
Connect										
Lattice/Twill fabric in Dark Pewter	Dark Pewter/Dark Pewter	●	●	●	○	○	○	○	○	○
Prima grain vinyl in Dark Pewter	Dark Pewter/Dark Pewter	○	○	○	○	○	○	○	○	○
Trend										
Lattice/Twill fabric in Dark Pewter	Dark Pewter/Dark Pewter	●	●	●	●+	●+	●+	●+	●+	●+
Lattice/Twill fabric in Brilliant Blue	Brilliant Blue/Dark Pewter	●		●	●+	●+	●+	●+	●+	
Limited										
Lattice/Twill fabric in Dark Pewter	Dark Pewter/Dark Pewter	●	●	●	●+	●+	●+	●+	●+	●+

● = Standard, ⊖ = Option, at extra cost. ●+ = No charge option. *Metallic paint is an option at extra cost but is free of charge on Trend and Limited models. *Avalon is not available on crew van models. ¹Available from September 2012

Colour and trim

Classic colours



Contemporary colours



Classic colours

- 1. Frozen White
- 2. Blazer Blue
- 3. Race Red¹
- 4. Moondust Silver*
- 5. Panther Black*

Contemporary colours

- 6. Avalon* (except crew van)
- 7. Ink Blue*
- 8. Mars Red*
- 9. Midnight Sky*

*Metallic paint (option at extra cost).
¹Available from September 2012

Note The images used are to illustrate body colours only and may not reflect the vehicle described. Colours and trims reproduced within this brochure may vary from the actual colours, due to the limitations of the printing processes used.

Ford understands the colour you select may represent your corporate colour choice for years to come. Therefore we recommend you select one of our classic colours or, if you need a unique colour for your fleet, speak to your local dealer about our SVO colours that offer you more than 100 colour options. Contemporary colours reflect the latest trends in vehicle colouring but are subject to deletion at short notice.



MY 2013 GBR en

Illustrations, descriptions and specifications. This catalogue was correct at the time of going to print. However, Ford policy is one of continuous product development. The right is reserved to change specifications, colours and prices of the models and items illustrated and described in this publication at any time. For the latest details always consult your Ford Dealer. **Optional equipment.** Throughout this publication, wherever a feature is described as being an 'Option' or 'Option Fitment/Pack' etc, you should assume that it will be at extra cost to the base vehicle, unless specifically stated to the contrary. All models and colour combinations are subject to availability. **Note.** Some images portrayed are of a pre-production model and/or are computer generated, therefore, the design/features on the final version of the vehicle may differ in various respects. In addition, some of the features shown on the vehicles may be optional. **Note.** This brochure contains both original Ford accessories as well as a range of products from our suppliers. **†**The identified accessories are carefully selected third party supplier branded accessories which do not come with a Ford warranty but are instead covered by the third party supplier's own warranty, the details of which can be obtained from your Ford Dealer. **Note.** The Bluetooth® word mark and logos are owned by the Bluetooth SIG, Inc. and any use of such marks by Ford Motor Company is under licence. The iPod word mark and logos are the property of Apple Inc. Other trademarks and trade names are those of their respective owners.

The Government fuel figures do not express or imply any guarantee of the fuel consumption of any particular vehicle. The vehicles themselves have not been tested and there are inevitably differences between individual vehicles of the same model. In addition, a vehicle may incorporate particular modifications. Furthermore, the driver's style and road and traffic conditions, as well as the extent to which the vehicle has been driven and the standard of maintenance, will affect its fuel consumption.



BY APPOINTMENT TO
HER MAJESTY THE QUEEN
MOTOR VEHICLE MANUFACTURERS
FORD MOTOR COMPANY LIMITED
BRENTWOOD ESSEX



BY APPOINTMENT TO
HIS ROYAL HIGHNESS THE PRINCE OF WALES
MOTOR VEHICLE MANUFACTURERS
FORD MOTOR COMPANY LIMITED
BRENTWOOD ESSEX



Ford and BP – working together to reduce fuel consumption and emissions.



Collect Nectar points at participating Ford Dealers and Authorised Repairers now. So take a look at the latest Ford Service Promotions by visiting the Owner Services section within www.ford.co.uk.



When you have finished with this brochure please recycle it.

Ford Customer Relationship Centre

In the unlikely event that your Ford Dealer can't help you or if you need to speak to us directly, call 0845 841 1111 at local rates.

Ford Rental – Local service nationwide

Car and van rental from our latest model range. Contact your local Ford Dealer for more information.

Talkback – The company car drivers' club

This is the club for extended test drives, special events, and advice on tax and buying issues. Join free, even if you don't drive a Ford.

Ford Mobility

Our MAGIC care centre provides free information on all motoring and mobility issues, including special offers for HRDLA and Motability recipients. Call free on 0800 240 241

Published by Ford Motor Company Limited,
Brentwood, Essex, England.
Registered in England No. 235446.
FA 1554/6.
INS2012/023 Exp 10/05/2013.
BJN 201831. FoE H51E.
PN 277509/0512/5m/GBR en.
May 2012.
© Ford Motor Company Limited.

www.ford.co.uk