

FORD **S-MAX**



Go Further

Go Further

These two words capture the spirit of Ford and our commitment to you. We go further so that you can, too.

2-9

Ford kinetic Design

Ford kinetic Design is the reason why our vehicles look more exciting than ever before. Bold, dynamic lines that create energy in motion.

10-13

Quality

We design and build your Ford to feel as good after many years of service as it did the day you picked it up. And to drive just as beautifully, too.



14-15

Green

Using advanced Ford ECOnetic Technology, we're committed to creating vehicles with improved fuel economy, reduced CO₂ emissions and a lower overall cost of ownership.



16-17

Safe

Ford's Intelligent Protection System uses sophisticated technology designed to help prevent an accident and, if one should happen, to protect you.



18-19

Smart

Cars that park themselves, windscreen wipers that know when it's raining – just some of the many clever solutions from Ford that make life a little easier.



20-25

Choose your Ford S-MAX

- Zetec
- Titanium
- Titanium X Sport

26-27

The range

28-35

Add those extra touches

- Wheels
- Music to your ears
- Choose more

36-43

Specifying your Ford S-MAX

44-46

Colour and trim

47

Making life easy



The pursuit of perfection can be utterly addictive. It demands attention to even the smallest detail. It drives you to accept nothing less than the very best in every single aspect of a car's design. Ford S-MAX has evolved. And it shows.

Model shown is a Ford S-MAX Titanium X Sport in Panther Black metallic paint (option).



Sporting icon

As in nature, evolution in car design improves the breed. And now, with advanced EcoBoost petrol engine technology, 'Ford Power' starter button and PowerShift automatic transmission, Ford S-MAX is more than ever a true sporting icon.

Model shown is a Ford S-MAX Titanium X Sport 2.0 EcoBoost 240 PS, PowerShift automatic, in Ice White special metallic paint (option), with Touchscreen Navigation PLUS system (option).



Ford S-MAX welcomes you inside with premium quality materials – enhanced with subtle refinements like LED interior lighting, an overhead console with additional stowage and child observation mirror.

Model shown is a Ford S-MAX Titanium X Sport with variable climate control front seats (option), Adaptive Cruise Control (ACC) with Forward Alert (FA) and IVDC with CCD (includes Keyless entry) (option), Tyre Pressure Monitoring System (option), and Touchscreen Navigation PLUS system (includes rear-view camera and USB port) (option).



Ford S-MAX's progression is demonstrated to powerful effect by its bold new frontal design. The product of our 'Ford kinetic Design' philosophy, it gives the appearance of motion, even when Ford S-MAX is standing still.

Model shown is a Ford S-MAX Titanium X Sport in Ice White special metallic paint (option).





Only the best

Not only have we improved the quality of the leather used for the seat trim in Ford S-MAX, we have even paid extra attention to the stitching pattern.
(Windsor leather seats are optional on S-MAX Titanium)



Ford S-MAX's exquisitely-detailed interior is tangible evidence of our unrelenting commitment to quality. Ford has engineered every single component for dependability, safety and strength with one objective clearly in mind:

Quality that's built to last.

Attention to detail



Premium detailing

Front door spears are finished in brushed chrome (standard on Titanium)



Premium quality

Image shows Ford S-MAX Titanium with Windsor leather in Dark Ebony (optional on Titanium), IVDC with CCD (also called Driver Select Suspension) (available with Adaptive Cruise control (ACC) (option) and variable climate control front seats (option).

Relentless testing

During its development, we test drove Ford S-MAX the equivalent of 87 times around the globe. Pushed it through the extremes of real-world weather from -40°C to +80°C and tested it over and over again. It's a car you can rely on, right down to the smallest ball bearing.



Premium finishes

On Ford S-MAX Titanium the lower front grille features a chrome surround and Piano Black finish



LED daytime running lights

Offering increased visibility to other road users – particularly in poor weather – the LED daytime running lights on Titanium and Titanium X Sport, are typical of the attention to detail to be found on Ford S-MAX.

This stylish design detail is also more energy efficient than dipped headlights due to its use of the latest LED technology.





Full-length panorama roof

The one-piece panorama roof provides a sense of freedom and has smooth-gliding power-operated sunblinds for when you want some shade. There is also a child observation mirror to keep an eye on the children. (Panorama roof is an option on Titanium and standard on Titanium X Sport).

Boosting efficiency

Our excellent range of turbo diesel engines range from 1.6 Duratorq TDCi with Auto-Start-Stop, contributing to a CO₂ figure of 139g/km, up to the 2.2 Duratorq TDCi engine with 200PS and 420 Nm of torque. These are joined in the range by next generation high-efficiency EcoBoost turbocharged petrol engines, which combine higher power and a broader spread of torque with reduced emissions and lower fuel consumption. The range topping EcoBoost engine delivers 240PS, with combined fuel economy of 34mpg.



The cockpit of a Ford S-MAX is a great place to be. Designed from the start to be a true driver's car, Ford S-MAX rewards your expertise with precision and composure, fully complemented by advanced turbocharged petrol and diesel engines, and our sophisticated Ford PowerShift automatic transmission.

A great place to be



Feel the power, not the shift

Ford PowerShift is the next generation of automatic transmissions, featuring a new state-of-the-art 6-speed dual clutch automatic transmission.

Ford PowerShift cleverly selects the next appropriate gear at exactly the right moment, delivering lightning-fast gear changes with no disruption to the flow of power.

Ford PowerShift truly delivers improved fuel economy compared to a conventional automatic and has a manual mode that allows you to switch gears at the flick of the lever.

Ford Key-Free system with 'Ford Power' engine start/stop button

Lock or unlock the doors, start or stop the engine without ever holding the key. Just keep the key fob with you in your pocket or bag (option).

'Ford Power' start/stop button is standard on Titanium and Titanium X Sport series.

Fingertip controls

The left-hand steering wheel-mounted toggle switch (shown) puts you in charge of the audio system. The right-hand toggle lets you move easily through the instrument cluster menus, providing simple, logical control of the system's many functions.

Interactive Vehicle Dynamic Control (IVDC)

IVDC (also called Driver Select Suspension) delivers notable improvements to handling, stability and braking performance. Each damper is adjusted five times per second to guarantee the best possible occupant comfort and road contact. You can also switch between suspension modes – sport, normal and comfort – as the mood takes you. (Available with Adaptive Cruise Control (ACC) on Titanium and Titanium X Sport, at extra cost).



Ford EcoBoost

With direct petrol injection, turbocharging and variable valve timing, Ford EcoBoost SCTi petrol engines deliver power and torque consistent with larger displacement engines. For example, the 1.6 EcoBoost 160 PS engine with Auto-Start-Stop in Ford S-MAX has more power than the previous 2.0 145PS Duratec petrol engine, and yet it achieves around 17% better fuel economy and 17% lower CO₂ emissions.



Technology for economy and sustainability



Ford EConetic Technology is designed to reduce your cost of ownership through improved fuel economy and lower CO₂ emissions, without any compromise on performance or driving quality. Much of this technology is brought together in our EConetic engines, which deliver some of the lowest fuel consumption and CO₂ emissions in their class.*

Ford EConetic Technology

- Ford EcoBoost fuel-efficient petrol engines
- Ford Duratorq TDCi
- Ford PowerShift dual clutch automatic transmission – combines the efficiency of manual transmission with the convenience of a conventional automatic
- Ford Auto-Start-Stop (see left)
- Ford Smart Regenerative Charging – charges the battery every time you lift off the accelerator when driving
- Ford Electric Power-Assisted Steering – a more efficient system that uses less engine power than conventional power-assisted steering
- Active Grille Shutter – improves aerodynamics and lowers fuel consumption
- Ford Eco Mode (see left)
- Shift Indicator – advises you when to change gear for maximum fuel efficiency

A family of advanced engines

In addition to our multi award-winning Ford EcoBoost petrol engines, we offer two more technologically advanced engines. Our Duratorq TDCi diesel engines feature common rail systems that deliver remarkably low fuel consumption and CO₂ emissions*, plus a quiet drive thanks to a two-stage fuel injection process. Our Duratec petrol engines offer you a great balance of performance and economy. They're made from ultra-light aluminium and feature state-of-the-art fuel injection for optimum fuel efficiency and reduced CO₂ emissions*.

*see specification tables for fuel economy and CO₂ figures

Ford power of choice

Ford's alternative fuel vehicles all harness our latest advances in engine technology. They're the answer if you want low tax and even better fuel economy without compromising on design or drive dynamics.



Focus Electric

Powered exclusively by a lithium-ion battery system, the Focus Electric is one of the most technologically advanced cars on the road today.



Ford Duratorq TDCi

Our advanced diesel engines provide exceptional fuel economy and low CO₂ emissions.

(See specification tables for fuel economy and CO₂ figures)



Ford Eco Mode

This intelligent driver information system helps you achieve optimum fuel efficiency.

Ford Auto-Start-Stop

When your vehicle is idling at a standstill, the engine automatically shuts down to save fuel. When you want to drive off, the engine immediately restarts.



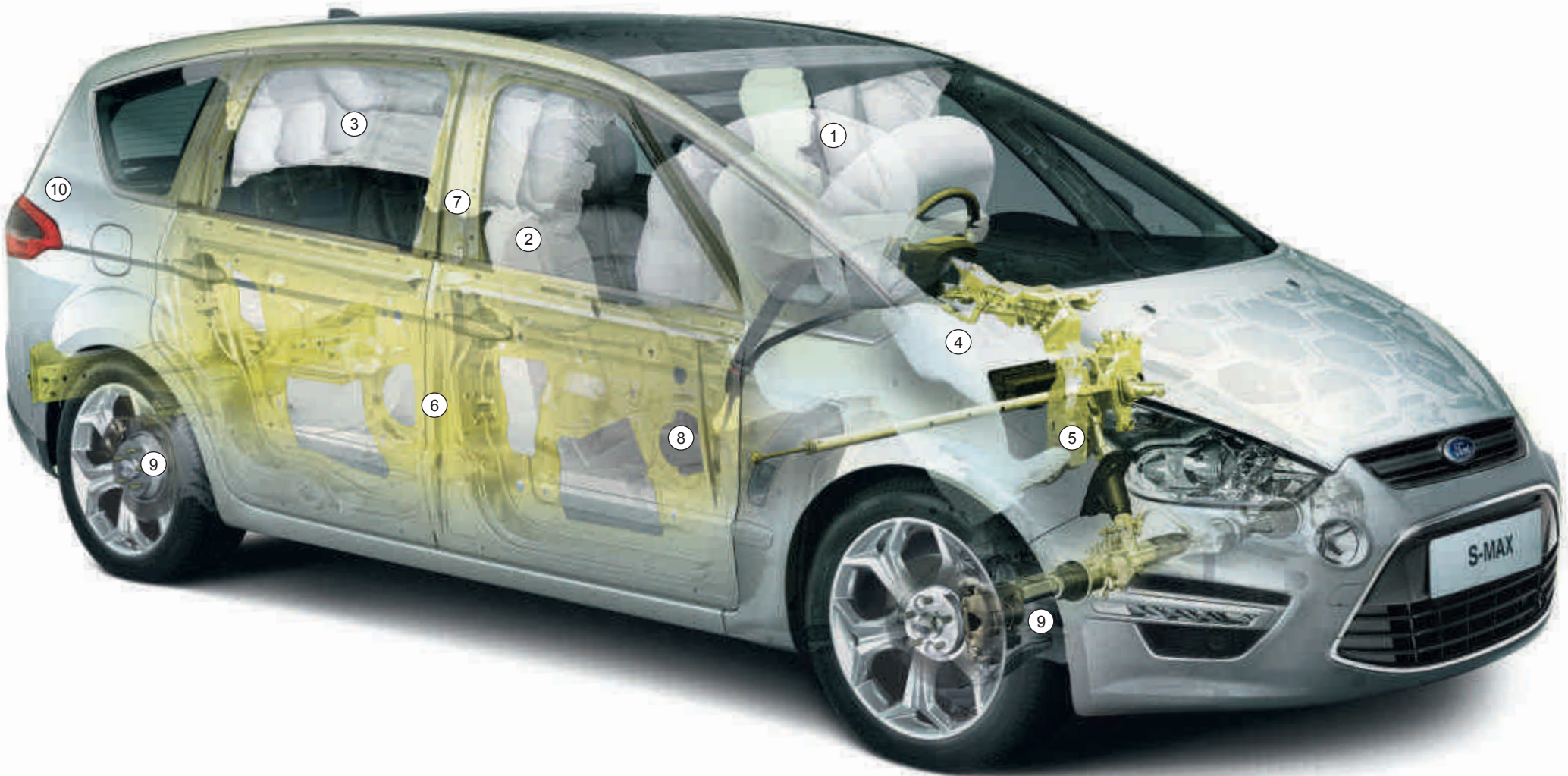
Active safety

The same superbly-balanced chassis and precise steering that make Ford S-MAX such a pleasure to drive also help it respond with poise and predictability in an emergency situation.



Ford S-MAX's advanced Intelligent Protection System (IPS) uses a range of sophisticated technologies to keep you protected, including an ultra-high strength steel safety cage, an anti-lock braking system (ABS) with electronic brake-force distribution (EBD), and front, curtain and driver's knee airbags.

Intelligent protection



The Ford S-MAX IPS includes:

- 1. Driver's and front passenger's airbags**
- 2. Driver's and front passenger's side impact airbags
- 3. Side curtain airbags for first- and second-row seats
- 4. Driver's knee bolster airbag
- 5. Collapsible steering column and pedals for optimised protection of driver's legs and feet
- 6. Robust computer-optimised body structure with ultra-rigid safety cell and crumple zones
- 7. Pre-tensioners, load-limiting retractors and height-adjustable mounts on front seat belts
- 8. Anti-submarining seat bases
- 9. Anti-lock brakes (ABS) with electronic brake-force distribution (EBD) and Emergency Brake Assist (EBA) (included with ESP)
- 10. Emergency Brake Warning

Note: A child seat should never be placed in the front passenger seat when the Ford vehicle is equipped with an operational front passenger's airbag. The safest place for children is properly restrained on the second row seats.

*Front passenger's airbag deactivation switch is available as a Dealer-fitted option.

Quickclear heated windscreen

Ford's ground-breaking heated windscreen quickly melts ice and then keeps your view frost-free as you drive. It can also demist the inside of the screen in a matter of moments (standard).

Halogen Adaptive Front Lighting System (AFS) with static cornering lights

Depending on the vehicle, direction and speed, AFS swivels the low beam headlights by up to 15 degrees to aim in the direction you are heading. (Not available on S-MAX in the UK).

Bi-Xenon HID headlights

Ford S-MAX's Bi-Xenon HID headlights are more than twice as powerful as conventional headlights, but use only two-thirds of the energy. Also includes static cornering lights and headlight washers. (Standard on Titanium X Sport)

Tyre Pressure Monitoring System (TPMS)

Tyre Pressure Monitoring System alerts you in case of deflation (image shown below is with Ford Convers+ instrumentation) (TPMS is available as an option, and fitted as standard when optional 17" Runflat tyres are selected).

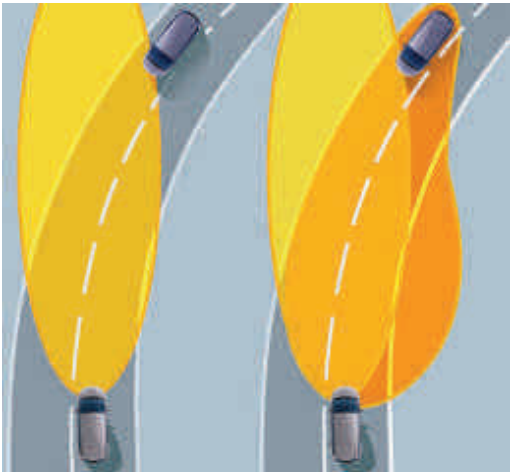
Emergency Brake Warning

The brake lights automatically flash during emergency braking, giving following drivers advance warning of a potentially hazardous situation (standard).

Lane Departure Warning

Lane Departure Warning alerts the driver if they stray from their lane on the motorway** without using the indicator, by sending vibrations through the steering wheel. Lane Departure Warning also includes Driver Alert and Auto High Beam. Please ask your Ford Dealer for details (option, available as part of Driver Assistance Packs).

**Operates at speeds over 40 mph on multi-lane roads with clearly visible lane markings.



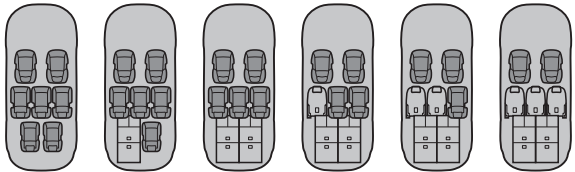


Ford Fold Flat System with Activity Kit

Perfect if you live an active, sporty lifestyle that involves transporting large items, such as mountain bikes or a coolbox, that you want to keep safely in place when you're on the move. (Activity Kit is available as an accessory)

Ford Fold Flat System (FFS)

Shown below and left: Each second and third row rear seat folds flat individually in seconds, creating a myriad of passenger and load-carrying possibilities. Second row seats also slide forward and back to optimise leg room and second row seat backs tilt for improved comfort.



Capless refuelling with Ford Easy-Fuel

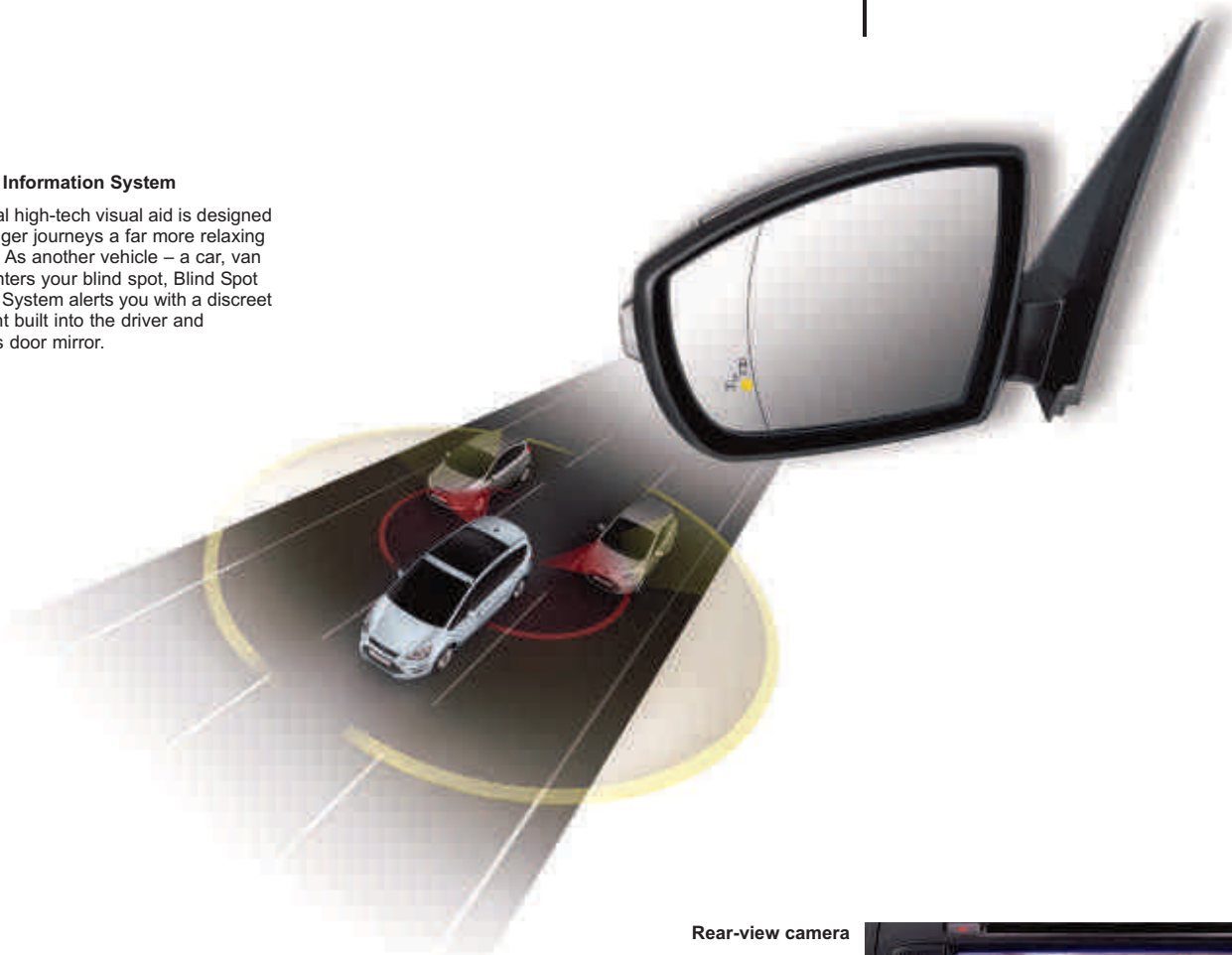
No dirty fuel caps to touch. Ford Easy-Fuel with its unique safeguard ensures nobody accidentally fills up with the wrong fuel. (Standard)



Ford S-MAX has been designed to make your everyday life easier. Innovative, insightful features, such as the Ford Fold Flat System (FFS) and luggage area light, will soon have you wondering how you ever got by without them.

Blind Spot Information System

This optional high-tech visual aid is designed to make longer journeys a far more relaxing experience. As another vehicle – a car, van or lorry – enters your blind spot, Blind Spot Information System alerts you with a discreet warning light built into the driver and passenger's door mirror.



Rear-view camera

Select reverse and the rear-view camera activates automatically in the Touchscreen Navigation PLUS display screen, allowing you to see objects behind your car. Special guidance graphics indicate the width and centre line of the car, based on the steering angle, for safer and easier manoeuvring. (Included as part of the optional Touchscreen Navigation PLUS System)



Power rear door window and child locks

Secure your most precious cargo with a flick of a switch on the driver's door. (Standard)



Taking care of the small things

Neatly hidden within the rear doors when not in use, the integrated sunblinds can be easily raised to protect rear occupants from the sun's rays. (Included as part of the optional Space Pack)



Smart thinking





Zetec



The S-MAX Zetec effortlessly merges stylish design with a flexible and spacious interior.

Key features include:

- 16" alloy wheels
- 7 seats with Ford Fold Flat Seat system (2nd and 3rd row seats)
- ISOFIX attachments for child seats (all three second row seats)
- Power rear door and window child locks
- Bluetooth with Voice Control System
- Air conditioning with Dual-zone Electronic Automatic Temperature Control (DEATC)
- Park Assist – Front and Rear Sensors
- 6000 CD/radio/MP3 Audio system
- Ford Easy Fuel capless refuelling system with mis-fuelling inhibitor
- Thatcham Approved alarm
- Electrically-operated front and rear windows
- Electrically-operated and heated mirrors
- Sports-style front seats
- Driver's seat electric height adjustment with manual lumbar support
- Short overhead console with stowage and sunglasses holder
- Electronic tailgate release
- Rake- and reach-adjustable steering column
- Ford Intelligent Protection System (IPS)
- Front fog lights
- Leather trimmed steering wheel and gearshift knob
- Tonneau cover for the luggage compartment

Image above: Model shown is a Ford S-MAX Zetec with Hypnotic Silver metallic paint. (Option)

Image opposite: Model shown is a Ford S-MAX Zetec with Daphne in Silver interior and optional cruise control

Air conditioning with Dual-zone Electronic Automatic Temperature Control (DEATC)

Can be adjusted separately for the driver and front passenger. (Image below shows the optional Sony DAB audio system)



Ford Easy Fuel capless refuelling system

The Ford Easy Fuel capless refuelling system features a mis-fuelling inhibitor that can tell the difference between the fuel pump nozzles used for petrol and diesel.



Leather-wrapped steering wheel

Includes toggle switches to control audio and instrument cluster menu.



Front fog lights

Front fog lights for increased visibility in poor driving condition.



Distinctive handbrake design integrates perfectly into centre console with stowage and cup holder





Titanium



Beneath the bold exterior of the S-MAX Titanium lies a world of innovative technology and contemporary luxury.

Additional to Zetec:

- 17" 5 spoke alloy wheels
- Ford Convers+ premium instrument cluster with colour display
- Sony DAB CD/Radio/MP3 audio system with USB/MP3/iPod® connectivity port
- 'Ford Power' starter button
- Cruise control with Adjustable Speed Limiting Device
- Dark Privacy glass to rear windows
- Solar Reflect front windscreen
- Rear seat air conditioning vents
- Soft-feel leather-trimmed steering wheel
- Chrome finish to side window surrounds
- Chrome surround on lower radiator grille
- Brushed stainless steel front door scuff plates
- Front footwell lights and submarine lighting
- Automatic headlights and autowipers with rain sensor
- Door mirror-mounted puddle lights
- Enhanced LED interior lighting
- Auto-dimming automatic rear-view mirror
- Luxury woven headliner
- Front and rear velour carpet mats
- Overhead console with A5 stowage, sunglasses holder and child observation mirror

Image above: Model shown is a Ford S-MAX Titanium 2.0 EcoBoost 203 PS, PowerShift automatic with Panther Black metallic paint (option).

Image opposite: Model shown is a Ford S-MAX Titanium with Vector/Lux in Ebony interior.

LED daytime running lights
(Standard)

Chrome finish side window surround
(Standard)

Enhanced LED interior lighting
(Standard)

Ford Convers+ colour instrument cluster display
(Standard)

Overhead console with sunglasses holder and child observation mirror
(Standard. Optional Panorama roof version shown)

17" alloy wheels
(Standard)





Titanium X Sport



Titanium X Sport is the ultimate expression of the Ford S-MAX: an exclusive combination of sports styling, premium quality, enhanced dynamic ability and functional excellence.

Additional to Titanium:

- 18" Y-spoke alloy wheels
 - Sport suspension
 - Rear spoiler
 - Alcantara & Napoli leather seat trim with red sports stitching
 - Unique sports interior styling, including red detail stitching to steering wheel, door panel inserts, gearshift gaiter and carpet mats
- Full-length panorama roof with power sunblind
 - Bi-Xenon HID headlights with static cornering lights
 - Front bumper skirt
 - Side skirts
 - Unique gloss black front lower grille in honeycombe design
- Rear bumper skirt with gloss black integrated diffuser
 - Aluminium pedal set and footrest

Image above: Model shown is a Ford S-MAX Titanium X Sport 2.2 TDCi 200 PS, 6 speed manual, with Touchscreen Navigation PLUS system (option) and Ice White special metallic paint (option)

Image opposite: Model shown is a Ford S-MAX Titanium X Sport, 2.0 TDCi 163 PS, 6-speed manual, with Premium Sound System (option) and Ice White special metallic paint (option)

Pedal set with aluminium covers
(Standard)

Bi-Xenon HID headlights
(Standard)

Alcantara®/leather seat trim with red stitching
(Standard)

Front bumper skirt
(Standard)

Rear spoiler
(Standard)
(Note: Image shows roof aerial as fitted with optional Touchscreen Navigation systems)

18" Y-spoke alloy wheels
(Standard on Titanium X Sport; option on Titanium and Zetec)



Treat yourself to the new Ford S-MAX

Range

Zetec

Key features include:

- 16" alloy wheels
- 7 seats with Ford Fold Flat System (2nd and 3rd row seats)
- Power rear door child locks
- Park Assist – front and rear sensors
- Air conditioning with Dual-zone Electronic Automatic Temperature Control (DEATC)
- Stereo CD/radio
- Thatcham Approved alarm
- Ford Easy Fuel capless refuelling system
- Electrically-operated front and rear windows
- Electrically-operated and heated mirrors
- Sports-style front seats
- Driver's seat electric height adjustment with manual lumbar support
- Bluetooth® with Voice Control System
- Short overhead console with stowage and sunglasses holder
- Electronic tailgate release
- Rake-and reach-adjustable steering column
- Ford Intelligent Protection System (IPS)
- Front fog lights
- Leather-wrapped steering wheel and gear knob
- Body colour bumpers, bodyside mouldings and door handles
- ISOFIX attachments for child seat (available across all three 2nd row seats)
- Tonneau Cover for the rear luggage compartment

Bodystyle: 5-door

Engines:

- Petrol
- 1.6 EcoBoost SCTi (160 PS) with Auto-Start-Stop
- Diesel
- 1.6 Duratorq TDCi (115 PS) with Auto-Start-Stop
 - 2.0 Duratorq TDCi (140 PS)

Titanium

Additional to Zetec:

- 17" alloy wheels
- Ford Power starter button
- Sony DAB Audio system with USB connectivity port
- Soft-feel leather-trimmed steering wheel
- Chrome finish to side window surround
- Brushed stainless steel front door scuff plates
- Front footwell lights and submarine lighting
- Automatic headlights and autowipers with rain sensor
- Auto-dimming automatic rear-view mirror
- Cruise control with Adjustable Speed Limiting Device
- Enhanced LED interior lighting
- Luxury woven headliner
- Front and rear carpet floor mats
- Overhead console with A5 stowage, sunglasses holder and child observation mirror
- Chrome surround on lower radiator grille
- Solar Reflect heat reflecting windscreen
- Rear seat air vents for second row passengers
- Privacy glass

Bodystyle: 5-door

Engines:

- Petrol
- 1.6 EcoBoost SCTi (160 PS) with Auto-Start-Stop
 - 2.0 EcoBoost SCTi (203 PS)**
- Diesel
- 1.6 Duratorq TDCi (115 PS) with Auto-Start-Stop
 - 2.0 Duratorq TDCi (140 PS)
 - 2.0 Duratorq TDCi (163 PS)
 - 2.2 Duratorq TDCi (200 PS)

Titanium X Sport

Additional to Titanium:

- 18" Y-spoke alloy wheels
- Alcantara® & Napoli leather seat trim with red sports stitching
- Full-length panorama roof with power sunblind
- Bi-Xenon HID headlights with washer jets
- Front bumper skirt
- Side skirts
- Rear bumper skirt with integrated diffuser
- Sports suspension
- Rear spoiler

Bodystyle: 5-door

Engines:

- Petrol
- 2.0 EcoBoost SCTi (240 PS)**
- Diesel
- 2.0 Duratorq TDCi (163 PS)
 - 2.2 Duratorq TDCi (200 PS)

Note: Please refer to specification section for full technical features, transmission types, and performance and emissions.
**2.0 EcoBoost with PowerShift automatic transmission only.





Scuff plates

Elegant polished stainless steel scuff plates, with 'Individual' script, help to protect the paintwork and make entering your Ford S-MAX an even more rewarding experience (front doors) also available as an accessory)



The Ford Exterior Styling Pack is designed to boost your Ford S-MAX's dynamic appearance. The body colour front lower valance panel and front lower grille in gloss black set the sporty tone. Unique body colour side skirts give the car a road-hugging stance, while the body colour rear spoiler and rear lower bumper with integrated diffuser in gloss black round the look off perfectly (standard on Titanium X Sport; also available as an accessory).

Exterior Styling Pack

Pedal set with aluminium covers

Smart touches include the pedal set and footrest, with aluminium covers and non-slip surfaces, which emphasise the car's dynamic character. (Standard on Titanium X Sport; also available as an accessory)



Rear spoiler

The body colour rear spoiler blends perfectly with the exterior of the S-MAX. (Standard on Titanium X Sport; also available as an accessory)



Rear lower bumper

The body colour rear lower bumper skirt, integrated rear diffuser in gloss black and tailpipe-finisher* (standard on Titanium X Sport) in polished stainless steel combine to make your Ford S-MAX stand out on the road are available as an accessory.

*The type and shape of the tailpipe-finisher depends on the engine fitted to your vehicle. Please ask your Dealer for further details.





Eibach® suspension-lowering kit*
The Eibach® suspension-lowering kit enhances driving performance and handling as well as providing a more dynamic stance. Lowers the car by approximately 30 mm. (Accessory)



Every part of the Ford S-MAX is designed to be admired. And with a choice of stunning sporty wheel designs, attracting second glances will become second nature. For added safety in the event of a puncture, opt for the innovative runflat tyres with Tyre Pressure Monitoring System (available with 17" 5x2-spoke alloy wheel).

Wheels

Image left shows 18" 12-spoke Y-design alloy wheel
(Accessory. Part number 1801909)

Scuff plates with 'S-MAX' script
Polished stainless steel scuff plates with 'S-MAX' script both welcome you on board and protect the paintwork. (Front doors only) (Accessory)

Note The 18" wheels available on Ford S-MAX are designed to deliver more sporting driving characteristics and a firmer ride quality compared to standard 16" and 17" wheels.
+Please see back cover for warranty information.



16" 5x3-spoke alloy wheel
(Standard on Zetec, also available as an Accessory)

17" 5-spoke machined alloy wheel
(Accessory, also available in sparkle silver-painted finish)



17" 5x2-spoke alloy wheel
(Standard on Titanium and available as an accessory)
Also available with optional runflat tyres.

17" 9-spoke alloy wheel
(Available as an accessory in anthracite)

17" 10-spoke alloy wheel
(Accessory)

17" 15-spoke alloy wheel
(Accessory)

Ford Individual 17" 5-spoke Sparkle Silver-painted finish alloy wheel
(Accessory)
Also available in Mystique Silver-painted finish.

18" 5-spoke alloy wheel
(Standard on Titanium X Sport, option on Titanium, are also available as an accessory)

18" 5-spoke Y-design alloy wheel
(Accessory)

Ford Individual 18" 5-spoke Sparkle Silver-painted finish alloy wheel
(Accessory)
Also available in Mystique Silver-painted finish)



Crystal clear sound

If you enjoy high-quality sound reproduction at home you'll love the optional Premium Sound System. (Option available with Sony DAB Audio on Titanium and Titanium X Sport). Hi-fi loudspeaker shown is the Muon by KEF.

Toggle controls

Steering wheel-mounted toggle controls let you operate the audio system and trip computer without taking your hands off the wheel. (For use with Ford audio systems only) (Standard)



Ford S-MAX is now available with the finest-quality audio systems we have ever offered – with the pleasure of concert-quality sound within your car.

Music to your ears

Premium Sound System

This is the ultimate in Ford S-MAX sound, featuring an 8-channel amplifier and superior quality speakers, including a facia-mounted tweeter and a concealed sub-woofer for the best possible sound reproduction. The three radio tuners and two antennas work together to ensure that the best possible radio signal and traffic data is being received. Includes USB/MP3/iPod® connectivity port. (Option only available with Sony audio system)



Sony DAB audio system

Add a new dimension to your in-car music with Sony DAB audio system. Featuring Programme Type (PTY) and Digital Sound Processing, the Sony DAB Radio/CD/MP3 player with 40 programmable stations and eight premium speakers for enhanced sound quality. Includes USB/MP3/iPod® connectivity port. Bluetooth® audio streaming compatible with certain mobile phones. See your Ford Dealer for details. (Standard on Titanium X and Titanium X Sport; also available as an option on Zetec).

RDS TMC Traffic Information System

Reduce your time spent in traffic jams with the new RDS TMC Traffic Information Service. Using data gathered by roadside sensors, it extends the performance of your navigation system by allowing it to use live information to calculate an alternative route and avoid traffic congestion.

Note The Bluetooth® word mark and logos are owned by the Bluetooth SIG, Inc. and any use of such marks by Ford Motor Company Limited and its associated companies is under licence. Bluetooth audio streaming and MP3 compatibility with certain mobile phones/devices. Contact your Ford Dealership for further details. Other trademarks and trade names are those of their respective owners. iPod is a trademark of Apple Corporation. **Note:** It is an offence for drivers to use a hand-held mobile phone or similar device while driving.

6000 radio/CD/MP3 Audio system

This stereo radio/CD player features 'Keycode' anti-theft coding, RDS EON, 24 programmable stations and eight speakers.

Remote control functionality via the left steering wheel toggle switch. Includes AUX connection for external music devices.

(Standard on Zetec).

Touchscreen Navigation with DAB Radio/CD Audio system

Featuring a 7" touchscreen with colour map and turn-by-turn instructions to your destination, which are also displayed in the instrument cluster. Includes USB connectivity for iPod® or MP3 device. Includes full Western European mapping data (on SD card).

Bluetooth audio streaming and MP3 compatibility with certain mobile phones/devices.

(Option on Zetec)

Ford Individual Rear Entertainment system

Features a built-in DVD player with two independently-operated LCD 7" screens, remote control and two wireless headphones. Now even your more demanding passengers can enjoy movies and computer games throughout the journey.

(Option on Titanium and Titanium X Sport; this option also includes the Ford Key-free system). An additional third wireless headphone is available as an accessory.



Touchscreen Navigation PLUS with DAB Radio/CD Audio system and Rear View Camera

A 7" colour touchscreen with rear view camera and colour map with turn-by-turn instructions to your destination which are also displayed in the instrument cluster. Includes USB connectivity for iPod® or MP3 device, full Western European mapping data (on SD card), premium speakers and chrome switch detailing that perfectly matches the premium interior.

Bluetooth audio streaming and MP3 compatibility with certain mobile phones/devices. Option on Titanium and Titanium X Sport)





Partial Dress-up Kit*

Features a front lower bumper appearance panel in silver or gloss black[†], rear lower bumper in body colour with integrated diffuser in silver or gloss black[†], and a tailpipe finisher[‡].

ClimAir® wind deflector**, for front and rear

Reduces wind turbulence and noise, allowing you a more enjoyable drive with the windows down, even during light rain. (Available for front and rear windows)

Leave nothing and no-one behind with Ford S-MAX's innovative stowage solutions.

Choose more



Britax Römer® child seat**

Provides optimum all-round protection and comfort. Various child seats available for all ages, also with ISOFIX. Removable and washable cover.

Thule® roof box Ranger 90, foldable**

Can be folded away for easy storage: the ideal space-saving solution for carrying luggage at a moment's notice. Shown in conjunction with roof carrier.

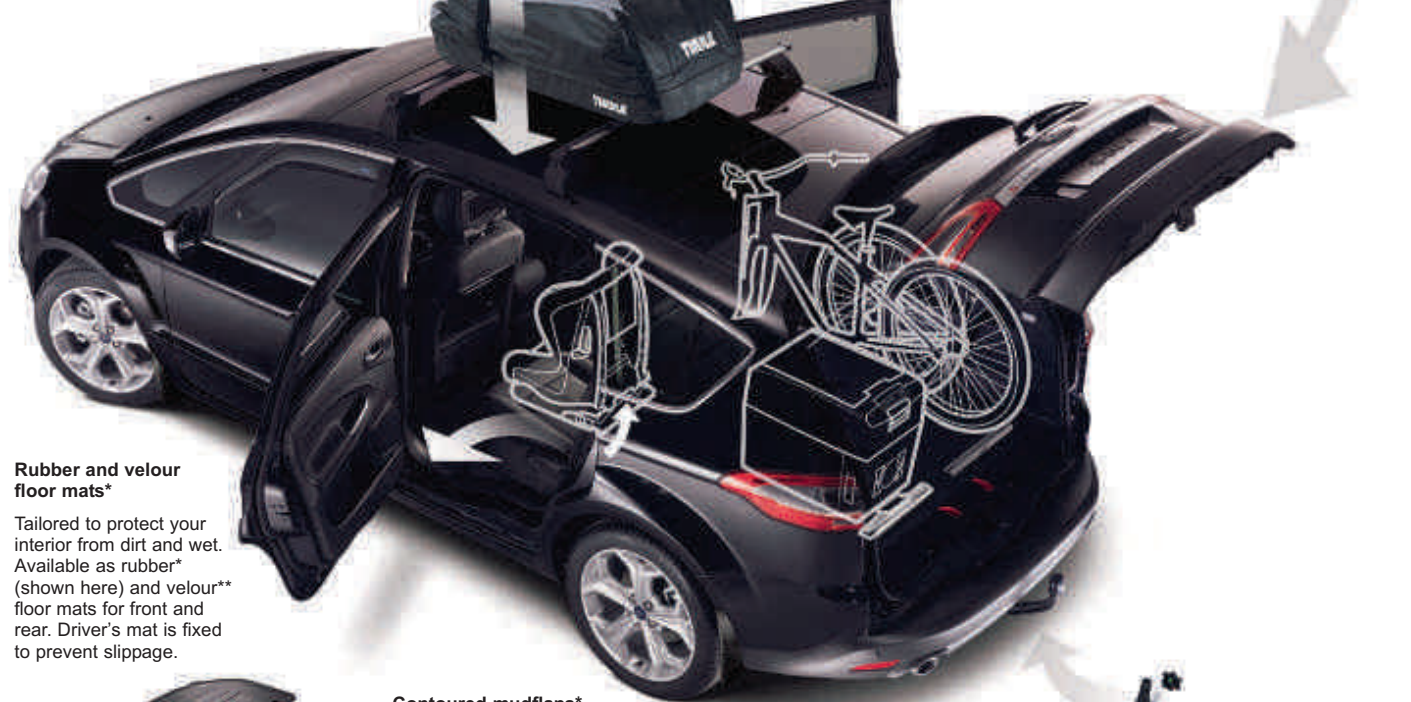
Roof base carrier*

Base for all roof transportation accessories (lockable).

Luggage floor net*

Elasticated net attached to luggage compartment floor.

ClimAir® wind deflector**



Rubber and velour floor mats*

Tailored to protect your interior from dirt and wet. Available as rubber* (shown here) and velour** floor mats for front and rear. Driver's mat is fixed to prevent slippage.

Contoured mudflaps*

Available as sets for front and rear.

Activity Kit*

Using a series of aluminium bars and special attachments that are fitted in the rear, this innovative kit allows items to be securely locked in place. From bikes and scuba gear to coolboxes and skis, the only limit is your imagination.

Waeeco® coolbox**

High-performance 35-litre capacity box cools down to 30°C below the ambient temperature, to a minimum of 1°C. Integrated 230V AC connector.

Thule® interior bike carrier**

Up to three bike carriers can be fixed to the activity kit.

Detachable tow bar**

For extra transport and stowage capability. Also available as fixed version.

Premium load protection net with load barrier*

Stops items rolling or sliding out when the tailgate is open and offers additional stowage capability.

Load retention net**(1)

This durable retention net helps prevent loads moving forward into the passenger compartment whilst driving, especially under sudden braking. Can be ordered for fitment behind the first and second row of seats.

Load retention guard**(1)

Robust, full-height dog guard system keeps dogs or luggage safely in the luggage compartment (removable when not in use). Can be ordered for fitment either behind the second row or the first and second row of seats.



Thule® roof ski/snowboard carrier Xtender 739**

Innovative, fully-lockable ski carrier suitable for up to six pairs of skis or four snowboards. Comfortable slide-out function for easy access to your ski equipment. (Image shows Ford Galaxy)

Unique side fender grille*

Special dynamic shape to make your Ford S-MAX look even sportier. Available in gloss black, anthracite and silver.

Rear spoiler*

The rear spoiler blends perfectly with the exterior of the S-MAX. (Standard on Titanium X Sport; available as an accessory on Titanium and Zetec).



* Available as an accessory.

**Available as an option and accessory.

⁽¹⁾Meets European ECE-17.07/DIN 75410-2 safety requirements.

[†]Depending on exterior colour. Please ask your Ford Dealer for more information.

[‡]The shape of the tailpipe finisher depends on the engine fitted to your vehicle.

Please ask your Ford Dealer for details.

+Please see back cover for warranty information.

Exterior equipment

	Zetec	Titanium	Titanium X Sport
Design features			
Door mirrors – Body colour housing, heated, electrically operated, integrated side indicator	●	–	–
Door mirrors – Body colour housing, heated, electrically operated, integrated side indicator, puddle lights	–	●	●
Door mirrors – Puddle lights and power foldable (also included as part of Seat Pack, Blind Spot Information System, and Pack Individual, all at extra cost)	○/□	○/□	○/□
Front fog lights	●	●	●
Front lower grille – Painted	●	–	–
Front lower grille – Painted with chrome finish surround	–	●	–
Front lower grille – Painted with sports style	–	–	●
Front upper grille – Painted	●	●	●
Rear privacy glass – Dark glass to the rear side and boot windows	○	●	●
Fixed panorama roof (includes 3rd row light, power sunblinds, short overhead console, child observation mirror)	○	○/□	●
Rear spoiler – Body colour	–	–	●
Exhaust – Dual, straight with finishers (only with 2.0 EcoBoost and 2.2 Duratorq TDCi engines)	–	●	●
Chrome finish side window surround	–	●	●
Detachable tow bar (including 13-pin electrical kit). (Please see your local Ford Dealer for accessory tow bar options for all S-MAX including Titanium X Sport)	○	○	–*
Wheels			
Alloy – 16"x6.5, 215/60 tyres	●	–	–
Alloy – 17"x7, 5x2-spoke, 225/50 tyres	–	●	●
Alloy – 17"x7, 5x2-spoke, 225/50 runflat tyres [†]	○	○	–
Alloy – 18"x8, 5-spoke, 235/45 tyres	–	○	●
Tyre mobility kit	●	●	●
Locking wheel nuts	●	●	●
Tyre Pressure Monitoring	○/□	○/□	○/□
Bodystyling pack			
Individual Body Styling Kit – Front lower valence panel (front skirt), unique front lower grille (gloss black paint), rocker mouldings (side skirts, rear lower bumper skirt with integrated diffusor (diffusor area gloss black paint), and rear spoiler (pack not available with factory fit towbar or mudflaps)	○*	○*	●
Convenience features			
Ford Easy-Fuel capless refuelling system with misfuel inhibitor	●	●	●
LED daytime running lights	–	●	●
Headlights – Automatic on/off	□	●	●
Headlights – Bi-Xenon High Intensity Discharge (HID) headlights with static bending lights (includes fixed xenon headlights, automatic levelling and jet wash)	–	○/□	●
Headlights – Courtesy delay	●	●	●
Parking Distance Sensor – Front and rear	●	●	●
Tailgate wash/wipe	●	●	●
Wipers – Front windscreen, Variable intermittent with electric wash	●	–	–
Wipers – Front windscreen, Automatic with rain sensor	□	●	●
Windscreen – Heated (Quickclear) with heated washer jets	●	●	●
Windscreen – Solar Reflect heat reflecting (includes rain sensing windscreen wipers and automatic headlights)	○	●	●

Equipment

Exterior equipment

	Zetec	Titanium	Titanium X Sport
Option packs			
Seat Pack – Driver’s 8-way electric seat adjustment with memory (includes memory folding exterior mirror and lumbar adjust) and passenger’s 8-way electric seat adjustment with manual lumbar support	○	○	○
Blind Spot Information System (includes Power fold mirrors)	○	○	○
Driver Assistance Pack 1 – Blind Spot Information System, Lane Departure Warning system with driver impairment monitoring and auto high low beam	○	○	○
Driver Assistance Pack 2 – Blind Spot Information System, Lane Departure Warning system with driver impairment monitoring, Auto High Beam and Adaptive Cruise Control (ACC) with Forward Alert (FA)	–	○	○
Space Pack – Folding tray on driver’s and passenger’s seat back and manual sunblinds in rear doors	○	○	○
Titanium X Pack with keyless entry – Fixed panorama roof, Bi-Xenon headlights, 18" 5-spoke alloy wheels, Power foldable mirrors, Alcantara and Napoli leather trim on seats	–	○	–

● = Standard, ○ = Optional, at extra cost, □ = Part of option pack, at extra cost. [†]Runflat tyres include Tyre Pressure Monitoring System. * = Available via aftermarket only. **Note:** the 18" wheels available on Ford S-MAX are designed to deliver more sporting driving characteristics and a firmer ride quality compared to standard 16" and 17" wheels

Interior equipment

	Zetec	Titanium	Titanium X Sport
A-pillar – Cloth covered	●	●	●
B-pillar – Cloth covered (only on Zetec in combination with panorama roof)	□	●	●
Floor mats – Front and rear, carpet	–	●	●
Gearshift knob – Leather	●	●	●
Headliner – Woven (only on Zetec in combination with panorama roof)	□	●	●
Pedal covers – Aluminium finish	–	□	●
Scuff plates – Front, polished stainless steel with Ford oval	–	●	●
Steering wheel – 4-spoke, leather-wrapped	●	–	–
Steering wheel – 4-spoke, leather-wrapped, soft feel	–	●	●
Steering column – Rake- and reach-adjustable	●	●	●

Interior equipment

	Zetec	Titanium	Titanium X Sport
Audio and communication systems			
Bluetooth® and Voice Control system* for the command of audio system, air conditioning and mobile phone (phone not included) Bluetooth® audio streaming*	●	–	–
USB/iPod® connectivity port	□	●	●
Ford 6000 Radio/CD Audio system – with premium speakers, remote audio controls, external AUX connection for external music devices	●	–	–
Sony DAB Radio/CD Audio system – with premium speakers, remote audio controls, MP3 compatible, external AUX connection for external music devices, with USB/MP3/iPod® connectivity port. Bluetooth® audio streaming*	○	●	●
Sony DAB Radio/CD and Premium Sound system – with Audiophile speaker and premium speakers, remote audio controls, MP3 compatible, external AUX connection for external music devices, with USB/MP3/iPod® connectivity port. Bluetooth® audio streaming* (only available with Sony audio).	–	○	○
Touchscreen Navigation system with DAB Radio/CD Audio – 7" colour screen, UK & Western Europe navigation data, TMC, 8 premium speakers, remote audio controls, external AUX connection for external music devices and USB/MP3/iPod® connectivity port. Bluetooth® audio streaming*	○	–	–
Touchscreen Navigation PLUS system with DAB Radio/CD, Rear View camera – 7" colour screen, UK & Western Europe navigation data, TMC, 9 premium speakers, remote audio controls, external AUX connection for external music devices and USB/MP3/iPod® connectivity port. Bluetooth® audio streaming*	–	○	○
Ford Individual Rear Seat Entertainment (MultiMedia DVD) system with Keyless Entry System – DVD player located under front passenger's seat, two LCD screens integrated in the front head restraints, with infra red remote control and two infra red headphones (third headphone available as an accessory). This system is not available with 4-way head restraints.	–	○	○
Remote audio controls (steering wheel mounted)	●	●	●
Climate control			
Air conditioning – Dual-zone Electronic Automatic Temperature Control (DEATC)	●	●	●
Convenience features			
'Ford Power' engine start/stop button (includes 2 remote keys)	–	●	●
Cruise control	○/□	●	●
Standard instrument cluster	●	–	–
Ford Convers+ premium instrument cluster with colour display	–	●	●
Trip computer including average fuel consumption, average speed, outside air temperature, trip reset, distance to empty (fuel)	●	●	●
Accessory power socket (12V) – Front	●	●	●
Accessory power socket (12V) – Rear, two	●	●	●
Centre console – Includes stowage bin, hinged armrest, two moulded cup holders	●	●	●
Centre console – Overhead, short, with stowage bin and sunglasses holder	●	–	–
Centre console – Overhead, short, with A5 stowage, sunglasses holder and child observation mirror (A5 stowage not available in combination with panorama roof) (only available on Zetec with fixed panorama roof)	□	●	●
Courtesy light – For front passengers, overhead with delayed switch-off	●	–	–
Courtesy light – Front and rear (2nd row) reading lights	●	–	–
Courtesy light – Footwell area, submarine lighting, and light in load compartment	–	●	●
Courtesy light – Illuminated entry system (courtesy lights and door mirror puddle lights, if fitted, illuminate when vehicle is unlocked)	●	●	●
Courtesy light – Enhanced interior lighting including LED interior lights (side-mounted) (only available on Zetec with fixed panorama roof)	□	●	●
Rear-view mirror – Auto-dimming, automatic (electrochromic)	–	●	●
Child observation mirror, located in overhead console to watch children (only on Zetec in combination with panorama roof)	□	●	●
Stowage boxes – In the rear 2nd row footwell area	●	●	●
Windows – Electrically-operated front and rear with one-touch lowering/closing on driver's side, anti-trap feature and global opening/closing	●	●	●
Seats			
Front seats – Sports-style (not available in combination with Windsor full leather seat trim)	●	●	●
Front seats – Comfort-style (only available in combination with Windsor full leather seat trim)	–	○	–
Front seat – Driver's manual lumbar support adjustment	●	●	●
Front seat – Driver's electric height adjustment	●	●	●

Specification

Interior equipment

	Zetec	Titanium	Titanium X Sport
Front seat – Driver's electric height, fore/aft, backrest angle and tilt adjustment with memory (includes memory exterior mirror and lumbar support adjustment)	□	□	□
Front seat – Passenger's manual lumbar support adjustment	●	●	●
Front seat – Passenger's electric height and fore/aft adjustment	□	□	□
Front seats – Height-adjustable head restraints	●	–	–
Front seats – Fully-adjustable head restraints	–	●	●
Front seats – Variable Heated cushion and seatback, with variable control ^l	○	○/□	○
Front seats – Variable Climate control (heated/cooled) cushion and seatback with variable control ^l	–	○	○
Seat back trays – Folding, fitted to the rear of the front seats (also included as part of the optional Space Pack)	□	□	□
Seats – Windsor leather trimmed (includes vinyl front and rear door trim) ^g	–	○	–
Seats – Alcantara® and Napoli leather trimmed (including vinyl armrest and front and rear door trim)	–	○/□	–
Seats – Alcantara® and Napoli leather trimmed with red stitching (including vinyl armrest and front and rear door trim)	–	–	●
Rear seats – Three 2nd row individual fold-flat seats, with height-adjustable head restraints	●	●	●
Rear seats – 2nd row easy entry tip and slide system	●	●	●
Rear seats – Two 3rd row individual fold-flat seats, with height adjustable head restraints	●	●	●
Loadspace			
Tie-down hooks	●	●	●
Tonneau cover (behind 2nd seat row seats)	●	●	●

● = Standard, ○ = Optional, at extra cost, □ = Part of option pack, at extra cost. The Bluetooth® word mark and logos are owned by the Bluetooth SIG, Inc. and any use of such marks by Ford Motor Company is under license. Other trademarks and trade names are those of their respective owners.
*To check Bluetooth®-enabled phone/media device compatibility please contact your local Ford Dealer, or visit www.ford.co.uk
^lWhen Windsor leather trim is specified with optional Variable Heated or Climate (heated/cooled) control seats, the Windsor leather front seats are perforated.

Safety and security

	Zetec	Titanium	Titanium X Sport
Safety			
Intelligent Protection System (IPS)	●	●	●
Anti-lock braking system (ABS) with electronic brake-force distribution (EBD)	●	●	●
Electronic Stability Programme (ESP) with Traction Control and Emergency Brake Assist (EBA)	●	●	●
Adaptive Cruise Control (ACC) with Forward Alert (FA), and Hill Launch Assist (HLA)	–	○	○
Adaptive Cruise Control (ACC) with Forward Alert (FA), Interactive Vehicle Dynamic Control (IVDC), Hill Launch Assist (HLA) and Keyless entry	–	○	○
Electric Parking Brake (EPB)	○	○	○
Hazard Warning Lights – Automatic activation of all turn indicators when emergency braking is applied	●	●	●
Airbags – Driver and front passenger [*]	●	●	●
Airbags – Front side impact	●	●	●
Airbags – Front and 2nd row curtain	●	●	●
Airbags – Driver's knee bolster airbag	●	●	●
Airbag – Front passenger de-activation switch (Dealer-fit option)	○	○	○
Security			
Remote central/double locking	●	●	●
Thatcham Category 1 perimeter and volume sensing alarm	●	●	●
Power child door and window locks (activated from the drivers door)	●	●	●
Keyless entry system with Power-foldable mirrors	–	○/□	○/□

● = Standard, ○ = Optional, at extra cost, □ = Part of option pack, at extra cost.
***Note: A child seat should never be placed in the front passenger seat, when the Ford vehicle is equipped with an operational front passenger's airbag. The safest place for children is properly restrained on the second row seats.**

Specification

Mechanical features

	Zetec	Titanium	Titanium X Sport
Steering			
Power assisted steering	●	●	●
Suspension			
Front – Independent with MacPherson struts and anti-roll bar	●	●	●
Rear – Independent Control Blade multi-link system and anti-roll bar	●	●	●
Sports suspension	–	–	●
● = Standard, ○ = Optional, at extra cost, □ = Part of option pack, at extra cost.			

Insurance groups

	Zetec	Titanium	Titanium X Sport
1.6 EcoBoost SCTi (160 PS), 6-speed manual with Auto-Start-Stop	18E	19E	–
2.0 EcoBoost SCTi (203 PS), PowerShift 6-speed automatic	–	23E	–
2.0 EcoBoost SCTi (240 PS), PowerShift 6-speed automatic	–	–	27E
1.6 Duratorq TDCi (115 PS), 6-speed manual with Auto-Start-Stop	16E	17E	–
2.0 Duratorq TDCi (140 PS), 6-speed manual	18E	19E	–
2.0 Duratorq TDCi (140 PS), PowerShift 6-speed automatic	18E	19E	–
2.0 Duratorq TDCi (163 PS), 6-speed manual	–	20E	22E
2.0 Duratorq TDCi (163 PS), PowerShift 6-speed automatic	–	20E	22E
2.2 Duratorq TDCi (200 PS), 6-speed manual	–	26E	26E
2.2 Duratorq TDCi (200 PS), Durashift 6-speed automatic	–	26E	26E

E = Exceeds security requirement for model concerned and group rating has been reduced.

Fuel and performace

	Stage	Maximum Power PS (kW)	Torque Nm	CO ₂ Emissions (g/km) [∞]	Fuel consumption in L/100 km (mpg) [∞]			Performance [*]		
					Urban	Extra Urban	Combined	Max. speed (mph)	0-62 mph (secs)	31-62 mph* (secs)
1.6 EcoBoost SCTi, 6-speed, manual with Auto-Start-Stop	Stage V	160 (118)	240	159	8.8 (32.1)	5.7 (49.6)	6.8 (41.5)	127	9.8	9.6
2.0 EcoBoost SCTi, PowerShift 6-speed, Automatic	Stage V	203 (149)	300	189	11.0 (25.7)	6.4 (44.1)	8.1 (34.9)	137	8.5	n/a
2.0 EcoBoost SCTi, PowerShift 6-speed, Automatic	Stage V	240 (176)	340	194	11.5 (24.6)	6.5 (43.5)	8.3 (34.0)	146	7.9	n/a
1.6 Duratorq TDCi 6-speed, manual with Auto-Start-Stop	Stage V + DPF	115 (85)	270 (290)	139	5.9 (47.9)	4.9 (57.7)	5.2 (54.3)	112	13.0	11.8
2.0 Duratorq TDCi 6-speed, manual	Stage V + DPF	140 (103)	340	139	6.5 (43.5)	4.7 (60.1)	5.3 (53.3)	121	10.2	9.5
2.0 Duratorq TDCi, PowerShift 6-speed, Automatic	Stage V + DPF	140 (103)	340	149	6.8 (41.5)	5.0 (56.5)	5.7 (49.6)	120	10.9	n/a
2.0 Duratorq TDCi 6-speed, manual	Stage V + DPF	163 (120)	340	139	6.5 (43.5)	4.7 (60.1)	5.3 (53.3)	127	9.5	9.3
2.0 Duratorq TDCi, PowerShift 6-speed, Automatic	Stage V + DPF	163 (120)	340	149	6.8 (41.5)	5.0 (56.5)	5.7 (49.6)	125	10.2	n/a
2.2 Duratorq TDCi 6-speed, manual	Stage V + DPF	200 (147)	420	174	8.2 (34.5)	5.7 (49.6)	6.6 (42.8)	137	8.6	7.1
2.2 Duratorq TDCi 6-speed, Durashift, Automatic	Stage V + DPF	200 (147)	420	189	9.4 (30.1)	5.8 (48.7)	7.1 (39.8)	132	8.9	n/a

^{*}In 4th gear. [∞]Ford test figures. [∞] The declared fuel consumptions and CO₂ emissions are measured according to the technical requirements and specifications of European Directive 80/1268/EEC or the European Regulation (EC) 715/2007 as amended by (EC) 692/2008. Fuel consumption and CO₂ emissions are specified for a vehicle type and not for a single car. The applied standard test procedure enables comparisons between different vehicle types and different manufacturers. In addition to the fuel efficiency of a car, driving behaviour as well as other non-technical factors are very important in determining a car's fuel consumption and CO₂ emissions. CO₂ is the main greenhouse gas responsible for global warming. A guide on fuel economy and CO₂ emissions which contain data for all new passenger car models is available at any point of sale free of charge or can be downloaded from <http://carfueldata.dft.gov.uk/>

Model availability, weights and loads

	Kerbweight (kg) [*]	Gross Vehicle Mass (kg)	Gross Train Mass (kg)	Max. Towable Mass (braked) (kg)	Max. Towable Mass (unbraked) (kg)
1.6 EcoBoost SCTi, 160 PS, 6-speed manual with Auto-Stop-Start	1602	2400	4000	1600	750
2.0 EcoBoost SCTi, 200 PS, PowerShift 6-speed, automatic	1676	2405	3905	1500	750
2.0 EcoBoost SCTi, 240 PS, PowerShift 6-speed, automatic	1676	2405	3905	1500	750
1.6 Duratorq TDCi, 115 PS, 6-speed manual with Auto-Stop-Start	1703	2505	3905	1400	750
2.0 Duratorq TDCi, 140 PS, 6-speed manual	1690	2505	4305	1800	750
2.0 Duratorq TDCi, 140 PS, PowerShift 6-speed, automatic	1689	2505	4305	1800	750
2.0 Duratorq TDCi, 163 PS, 6-speed manual	1690	2505	4305	1800	750
2.0 Duratorq TDCi, 163 PS, PowerShift 6-speed, automatic	1689	2505	4305	1800	750
2.2 Duratorq TDCi, 200 PS, 6-speed manual	1734	2505	4305	1800	750
2.2 Duratorq TDCi, 200 PS, Durashift 6-speed automatic	1733	2505	4505	2000	750

^{*}Represents the lightest kerbweight assuming driver at 75 kg, full fluid levels and 90% fuel levels, subject to manufacturing tolerances and options, etc., fitted. **Towing limits** quoted represent the maximum towing ability of the vehicle at its Gross Vehicle Mass to restart on a 12 per cent gradient at sea level. The performance and economy of all models will be reduced when used for towing. **Nose weight limit** is a maximum of 90 kg on all models. **Gross Train Mass** includes trailer weight.

Dimensions

Overall length with/without tow bar (mm)	4870/4768
Overall width with/without mirrors (mm)	2154/1884
Overall height (unladen) (mm)	1658
Turning circle – kerb to kerb (m)	11.9
Luggage capacity (litres)[†]	
7-seat mode (laden to package tray)	285
5-seat mode (laden to roof) (normal/max.)	1051/1171
2-seat mode (laden to roof)	2000
Fuel tank capacity (litres)	
Petrol	70
Diesel	70

[†]Measured in accordance with ISO 3832. Dimensions may vary dependent on the model and equipment fitted. All figures quoted above are final homologation figures only.

Ford Warranty and Servicing Plans

	All S-MAX Models
3 years/60,000 miles* Ford Protect Classic Warranty	●
1 year/unlimited miles* Ford Assistance Roadside Cover (UK and Europe)	●
2 years/2 services* or 3 years/3 services* Ford Protect Premium Plan, including scheduled servicing and extended Ford Assistance	○
1 year/unlimited miles* Paint Warranty	●
12 years/unlimited miles* Perforation Warranty	●

● = Standard. ○ = Optional, at extra cost.
^{*}From the date of first registration. Subject to terms and conditions.

	
Zetec (Standard) Seat facing: Daphne fabric in Generic Silver Seat bolster: Twill fabric in Ebony	Titanium (Standard) Seat facing: Vector fabric in Ebony Seat bolster: Lux fabric in Ebony
	
Titanium (Not available in UK) Seat facing: Vector fabric in Ebony Seat bolster: Napoli leather in Ebony	Titanium** (Option) Seat facing: Windsor leather in Dark Ebony (front seats are perforated when optional variable heated or climate (heated/cooled) seats are selected) Seat bolster: Windsor leather in Dark Ebony
	
Titanium** (Option) Seat facing: Alcantara® perforated in Ebony Seat bolster: Napoli leather in Ebony	Titanium X Sport (Standard) Seat facing: Alcantara® perforated in Ebony Seat bolster: Napoli leather in Ebony with Red stitching

**Windsor leather and Alcantara® & Napoli leather trims are options, at extra cost.



Frozen White*
Solid body colour



Blazer Blue
Solid body colour



Parkside
Metallic body colour*



Midnight Sky
Metallic body colour*



Moondust Silver
Metallic body colour*



Hypnotic Silver
Metallic body colour*



Deep Impact Blue
Metallic body colour*



Panther Black
Metallic body colour*



Micastone
Metallic body colour*



Lunar Sky
Metallic body colour*



Ice White
Special Metallic body colour*



Candy Red
Special metallic body colour*

Colour and trim

Make it yours.

The Ford S-MAX is covered by the Ford Perforation Warranty for 12 years from the date of first registration. Subject to terms and conditions.

Note:
The car images used are to illustrate body colours only and may not reflect current specification or product availability.
Colours and trims reproduced within this brochure may vary from the actual colours, due to the limitations of printing processes used.

*Metallic, Special Metallic and Frozen White body colours are options at extra cost.

Your new Ford S-MAX

We have developed a simple three-step plan to help you choose, finance and drive your new Ford S-MAX.

Choose

Use the form opposite to specify your new car right down to the wheels, audio, options and accessories, then take it to your Ford Dealer.

You can also specify your new car online using the Ford Configurator. It lets you instantly see what your car will look like – inside and out – from multiple angles. And a tally of your choices and their prices helps you keep to your budget.

Visit www.ford.co.uk/SBE/ConfigureYourVehicle

Finance

When it comes to financing your car, our size and expertise means we're well placed to provide you with a wide range of finance products.

Ford Credit** provides straightforward finance products for your car whether you are a private or business user.

Ford Lease^ provides simple tailored funding solutions for your business. Business users only

For more information about our finance products visit ford.co.uk

Drive

When you drive away in your new car, we're with you all the way. Ford has the largest authorised service network in the UK to help you keep your car in the best condition.

And should your new Ford ever require accident repair, a Ford Accident Repair Centre is the best place to get your car back to its pre-accident condition and on the road as quickly as possible.

Contact

Ford Credit Customer Services 0845 712 5490
Ford Lease Customer Services 0844 600 1405

Bodystyle:

Series:

Engine:

Transmission:

Colour:

Trim:

Wheels:

Audio:

Options:

Option Packs:

Accessories:

Finance:

** Finance subject to status. Guarantee/indemnities may be required. Freepost Ford Credit.

^Ford Lease is provided by ALD Automotive Ltd, trading as Ford Lease, Oakwood Park, Lodge Causeway, Fishponds, Bristol, BS16 3JA. ALD Automotive is registered in England No. 987418. For the purposes of the Data Protection Act 1998 the data controllers in relation to any information you supply are Ford Motor Company Limited, FCE Bank plc and ALD Automotive. Finance subject to status. Guarantees and indemnities may be required. ALD Automotive is authorised and regulated by the Financial Conduct Authority in respect of general insurance products.

To configure your Ford online visit
www.ford.co.uk/SBE/ConfigureYourVehicle
To look at finance for your Ford visit
www.fordcredit.co.uk/BuyingAndProtectingYourFord
Business users visit www.ford.co.uk/FordForBusiness



MY 2014 GBR en

Illustrations, descriptions and specifications. This catalogue was correct at the time of going to print. However, Ford policy is one of continuous product development. The right is reserved to change specifications, colours and prices of the models and items illustrated and described in this publication at any time. For the latest details always consult your Ford Dealer. **Optional equipment.** Throughout this publication, wherever a feature is described as being an 'Option' or 'Option Fitment/Pack' etc, you should assume that it will be at extra cost to the base vehicle, unless specifically stated to the contrary. All models and colour combinations are subject to availability. **Note.** Some images portrayed are of a pre-production model and/or are computer generated, therefore, the design/features on the final version of the vehicle may differ in various respects. In addition, some of the features shown on the vehicles may be optional. **Note.** This brochure contains both original Ford accessories as well as a range of products from our suppliers. **†**The identified accessories are carefully selected third party supplier branded accessories which do not come with a Ford warranty but are instead covered by the third party supplier's own warranty, the details of which can be obtained from your Ford Dealer. **Note.** The Bluetooth® word mark and logos are owned by the Bluetooth SIG, Inc. and any use of such marks by Ford Motor Company is under licence. The iPod word mark and logos are the property of Apple Inc. Other trademarks and trade names are those of their respective owners. **Note.** Some driver assistance features and safety features described in this brochure are designed to function using sensors, whose performance may be affected under certain weather or environmental conditions.

The Government fuel figures do not express or imply any guarantee of the fuel consumption of any particular vehicle. The vehicles themselves have not been tested and there are inevitably differences between individual vehicles of the same model. In addition, a vehicle may incorporate particular modifications. Furthermore, the driver's style and road and traffic conditions, as well as the extent to which the vehicle has been driven and the standard of maintenance, will affect its fuel consumption. **Insurance groups** are only as recommended by the Association of British Insurers. You should always consult your insurance adviser for confirmation.



Ford and BP – working together to reduce fuel consumption and emissions.



Collect Nectar points at participating Ford Dealers and Authorised Repairers now. So take a look at the latest Ford Service Promotions by visiting the Owner Services section within www.ford.co.uk.



Ford One Call

In the unlikely event that your Ford Dealer can't help you or if you need to speak to us directly, call 0203 564 4444

Ford Rental - local service nationwide

Car and Van rental from our latest model range. Contact your local Ford Dealer for more information

Ford Motability

Our dedicated care centre provides free information on all motoring and mobility issues, including special offers for HRDLA and Motability recipients. Call free on 0845 6040019

Finance

Ford Credit Customer Services 0845 712 5490
Ford Lease Customer Services 0844 600 1405

Published by Ford Motor Company Limited, Brentwood, Essex, England.
Registered in England No. 235446.

FA 1504/13
BJN 202857. FoE H32E.
PN 378502/1213/GBR en
November 2013.

© Ford Motor Company Limited.

www.ford.co.uk