

# FORD TRANSIT



Go Further





Visionary. Ingenious. Remarkable.  
Every vehicle bears his signature

*Henry Ford*



## No problem

Combining high carrying capacity with dependable power and low fuel consumption, the new Ford Transit has an insatiable appetite for hard work.

Model shown is a Ford Transit L3 H2 Trend with optional dual side load doors in Lunar Sky metallic paint



### Repositioned tie-down points

New Ford Transit's DIN/ISO compliant tie-down hooks and fixing points are conveniently mounted on the side walls, leaving the floor clear and free from obstructions. (Standard)



### Enhanced cargo space

With more space, more convenience and greater practicality, the new Ford Transit clearly means business. Offering up to 15.1 cu.m of loadspace\* in the new 'Jumbo' Van L4 H3, plus room for up to 5 Europallets, it cuts even the biggest jobs down to size.

\*Measured in cubic metres in the L4 H3 Van.





Model shown is a Ford Transit L4 H3 with optional dual side load doors in Moondust Silver.

## Anywhere you like

Offering three different body lengths, two roof heights, a range of GVMs from 2,900 kg to 4,700 kg, loadspace from 9.5 cu.m to 15.1 cu.m, FWD, RWD and AWD powertrain configurations and enhanced towing capability, the new Ford Transit is prepared for almost any challenge that comes its way.



### Towing ability

Ford Transit's appetite for hard work extends beyond its loadspace. The 350HD versions with high-rated suspension and 7,000 kg GTM can pull up to 3.5 tonnes of braked trailer load. (Commercial users may need a digital tachograph; Option)





## It all adds up

Delivering ultimate functionality, low cost of ownership and the best driving dynamics in its class, the new Ford Transit makes perfect business sense.

Model shown is a Ford Transit L3 H2 Trend in Tectonic Silver metallic paint.



### Cost of ownership

Transit's impressive 2-year/30,000 mile main service intervals mean less downtime and a significant reduction in operating costs.



**2 years  
30,000 mile**



## Easy

A light and spacious cab with car-like levels of comfort and advanced technology including Ford SYNC with Emergency Assistance\*. Ford Transit successfully combines business with pleasure.

Model shown is a Ford Transit Trend



\*Ford Emergency Assistance operates in over 30 European countries. This feature works when paired with a compatible mobile phone that is switched on and with you when an airbag is deployed (excludes knee airbags, if equipped) or the fuel pump shut off switch is activated. In the UK calls are directed through telephone number 112 to 999 services. See [ford.co.uk](http://ford.co.uk) for full details.\*\*Compatible mobile phone required. Text function not supported by all European languages. See your local Ford website for latest information.

**Note** The Bluetooth® word mark and logos are owned by the Bluetooth SIG, Inc. and any use of such marks by Ford Motor Company Limited and its associated companies is under licence. Other trademarks and trade names are those of their respective owners.

### Ford SYNC with Emergency Assistance\*

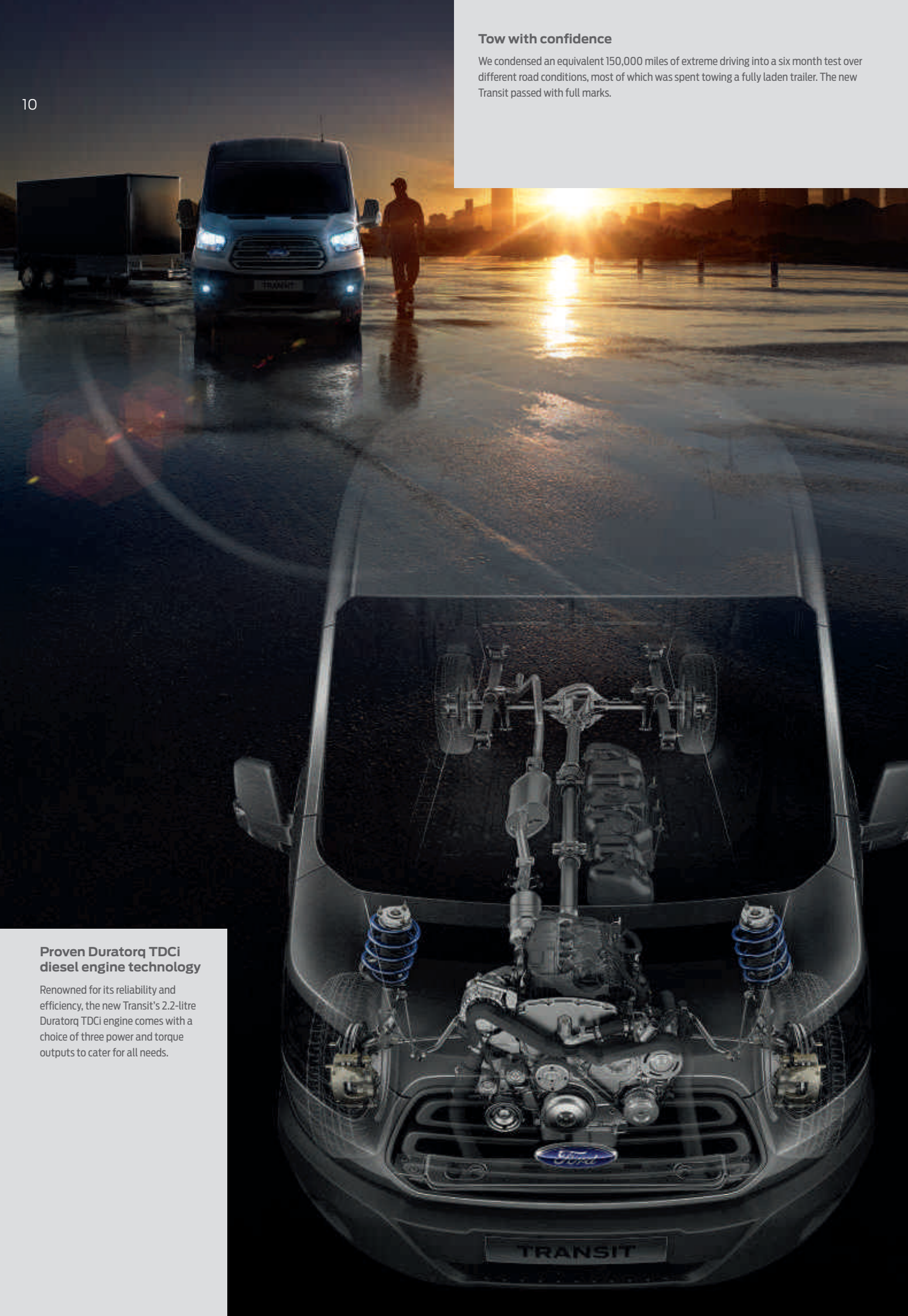
The next generation of in-vehicle connectivity system. Ford SYNC lets you operate most popular MP3 players, Bluetooth®-enabled phones and USB drives with remarkably simple voice commands. It can even read your incoming text messages out for you\*\*. Plus the Ford Emergency Assistance feature is designed to assist the occupants to place a call with the emergency services.





**Tow with confidence**

We condensed an equivalent 150,000 miles of extreme driving into a six month test over different road conditions, most of which was spent towing a fully laden trailer. The new Transit passed with full marks.



**Proven Duratorq TDCi diesel engine technology**

Renowned for its reliability and efficiency, the new Transit's 2.2-litre Duratorq TDCi engine comes with a choice of three power and torque outputs to cater for all needs.

**Built for a long, tough life**

Like every Ford commercial vehicle before it, the new Transit has durability in its DNA. A relentless testing programme ensures that it's a van built to last.



**High-mounted headlights**

Powerful projector-style headlights are located safely out of harm's way. (Standard)

**Multi-piece rear bumper**

Smart multi-piece rear bumper assembly helps to keep repair costs low.

**Tested for endurance**

Extensive testing included a two-month maximum speed test and demanding low-speed city drive cycles to imitate typical unforgiving delivery schedules.

**Wide bodyside mouldings**

Tough bodyside mouldings help to protect your van from accidental damage.



**Pushed to extremes**

From frost-covered prototypes started up in -40°C at 4,500-metre altitudes, to sun-baked vehicles towing fully-laden trailers up long inclines in 50°C heat, new Transit has been pushed to extremes.



**250,000 door shuts**

We slammed the sliding door 250,000 times, the front doors 250,000 times and the rear cargo door 150,000 times to ensure they'll never let you down.



**Obsessively driven**

During its development, we test drove the new Transit the equivalent of 3 million miles, including 150,000 miles with real customers. It's a van you can rely on, right down to the smallest ball bearing.

**12-year perforation warranty**

The new Transit owes its durable exterior to a thorough multi-stage painting process. From the wax-injected steel body sections to the hard-wearing top coat, new materials and application processes ensure it will retain its good looks for many years to come.



Zinc coating

Phosphate coat

Electrocoat

Top coat

Clearcoat



11.9 m turning circle\*

The new Ford Transit feels surprisingly car-like to drive, with power-assisted steering, a class-leading 11.9 m turning circle\* and excellent driver visibility, courtesy of the new larger windscreen and side windows.

\*Measured kerb-to-kerb, 11.9 m MWB (L2); 13.3 m LWB (L3) and LWB EL (L4).



The right working environment

Ford Transit sets new standards in driving comfort and control. Exceptional levels of finish and refinement, smart driver oriented technology, plus a range of practical and thoughtful features, make it a great place to be.

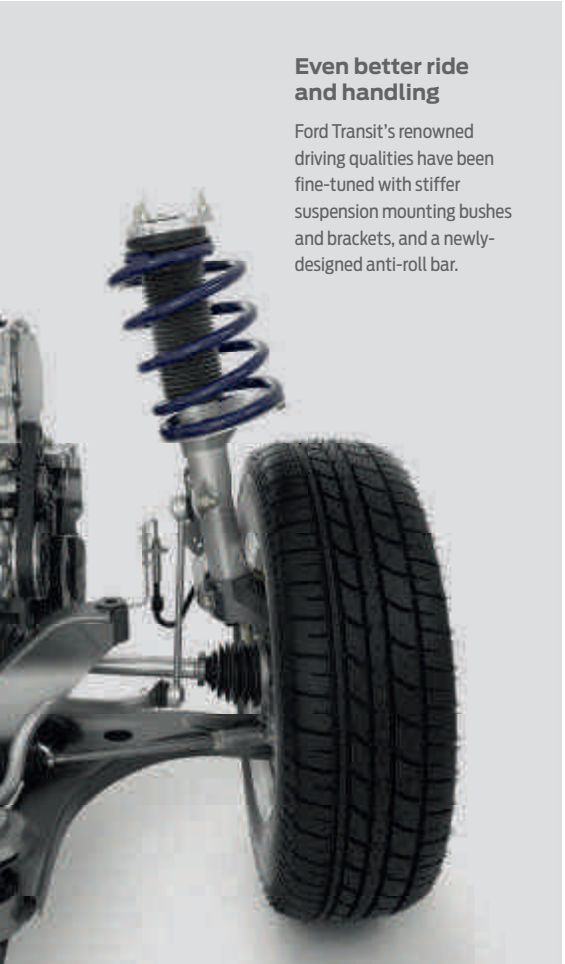
Quality designed around you

When you climb into the cab it's immediately evident that the new Ford Transit sets the benchmark for attention to detail. Great to sit in, great to drive, it boasts premium finishes and high-quality materials, without compromising everyday practicality.



Even better ride and handling

Ford Transit's renowned driving qualities have been fine-tuned with stiffer suspension mounting bushes and brackets, and a newly-designed anti-roll bar.



230-volt power socket

A handy 150 Watt 230V power socket, located between the driver's and passenger seats, can be used to charge tools, laptops or other electrical equipment without the need for special adaptors. (Option)

Electrically-operated driver's seat

A 10-way electrically-adjustable heated driver's seat with lumbar support is an ideal choice for vehicles with multiple drivers. (Option on Trend)



Allergy-friendly interior

Transit's interior uses materials that minimise the risk of an allergic reaction. Models fitted with air conditioning also have a high-performance pollen filter to prevent dust and pollen entering the cab.

Adjustable driver's seat and steering wheel

An adjustable driver's seat with armrest, and a steering wheel that adjusts to suit your height and arm length mean you can find your ideal driving position with ease. (Standard)



Ford Transit ECONetic

Reduce your running costs and CO<sub>2</sub> emissions with Transit ECONetic. Specially configured and powered by a uniquely calibrated Front Wheel Drive 2.2-litre 125 PS (92 kW)/350 Nm Duratorq TDCi Stage V engine, and available with a choice of wheelbase lengths and GVMs, it delivers combined fuel economy figures that will satisfy the bottom line without compromising performance. (see fuel consumption and CO<sub>2</sub> emission figures on pages 32-35)

Carries more, consumes less

New Transit's engines are among the most efficient available. Combining reduced fuel consumption with lower CO<sub>2</sub> emissions, you'll enjoy reduced running costs today and enhanced residual values tomorrow.



Ford ECONetic Technology

- Ford ECONetic Technology combined with optimised aerodynamics has resulted in outstanding fuel economy across the range.
- Ford Duratorq TDCi advanced diesel engines – provide exceptional fuel economy and low CO<sub>2</sub> emissions
  - Ford Auto-Start-Stop (see below)
  - Ford Smart Regenerative Charging
  - Economy – Gearshift Indicator light
  - Ford Eco Mode – encourages economical driving behaviour
  - Acceleration Control (see below)
  - Ford Battery Management System – improves battery life, fuel consumption and ensures ready-to-go reliability

The availability of Ford ECONetic Technology varies by model. Please ask your Ford Transit Specialist Dealer for details.

For more information on our sustainability initiatives visit [ford.com/go/sustainability](http://ford.com/go/sustainability).

Power and torque

Transit's 2.2 Duratorq TDCi diesel engine is offered in three power and torque configurations, each driving through a 6-speed manual transmission. All engines comply with strict EU Stage V LDT emission standards (125 PS and 155 PS versions are available with HDT6).

Why front-wheel drive?

- Larger loadspace, extra interior height and lower load height
- Lower kerbweight for greater payload and fuel efficiency

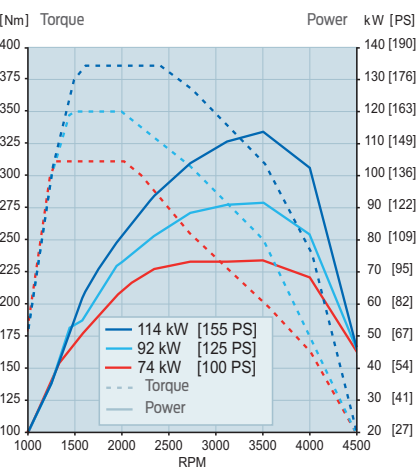
Why rear-wheel drive?

- Superior traction when heavily laden
- Best suited for heavier duty applications and towing

Why all-wheel drive?

- Extra traction in difficult driving conditions
- Under normal conditions drive is directed to the rear wheels. In slippery conditions, system automatically increases drive to the front wheels

2.2 Duratorq TDCi



Acceleration Control

To improve fuel economy, Acceleration Control stops the driver from accelerating faster when the vehicle is empty than when it is heavily laden. (Standard on ECONetic, option on other series)



Auto-Start-Stop

When your vehicle is idling at a standstill, the engine can automatically shut down to save fuel. When you want to drive off, the engine immediately restarts. (Standard on ECONetic, option on other series)

30,000 mile

or 2 year service intervals

Extended service intervals

Generous main service intervals of up to 30,000 miles (or two years) help keep you on the road longer and further reduce your running costs.

CO<sub>2</sub> 169 g/km

44.1 mpg

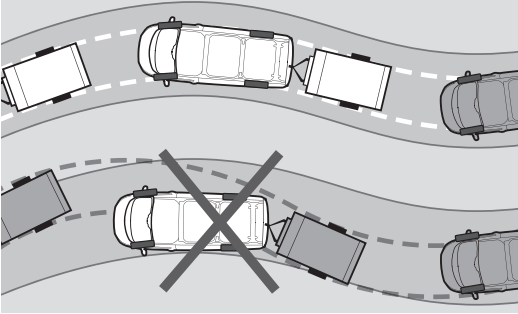
CO<sub>2</sub> emissions

Transit ECONetic's low CO<sub>2</sub> emissions from just 169 g/km delivers fuel and environmental benefits. (see fuel consumption and CO<sub>2</sub> emission figures on pages 32-35)



Trailer Sway Control<sup>(01)</sup>

When the system recognises that a towed trailer is starting to sway, it reduces engine torque and applies the brakes to lower the speed and help maintain stability. (Compatible with Ford factory-fit tow bar)



Electronic Stability Control (ESC)<sup>(01)</sup>

ESC is designed to help you maintain control in extreme driving conditions. It senses when you are deviating from your chosen line and aims to keep you on track by automatically regulating braking and engine output. (Standard)

Traction Control<sup>(01)</sup>

If wheel slip is detected at low speed, the system can distribute more torque to the wheel with most traction. (Standard)

Emergency Brake Assist<sup>(01)</sup>

Designed to recognise an emergency braking situation and optimise the pressure within the braking system to provide maximum stopping power. (Standard)

Big on loadspace, big on safety

Safety is important to us, so the new Transit is designed to help protect you, your load and those around you.

Emergency Brake Warning<sup>(2)</sup>

Front and rear indicators automatically flash during heavy braking, giving other drivers advance hazard warning. (Standard)

Lane Keeping Alert<sup>(0)\*2)</sup>

Lane Keeping Alert<sup>(2)</sup> is designed to recognise when you approach the road markings without using the indicator, and alerts you with vibrations through the steering wheel. (Option)

Automatic headlights<sup>(02)</sup>

Designed to switch on the headlights when the sensor detects poor light conditions. (Standard on Trend)



Safety by design

Across the Ford Transit range, a full line-up of passive and active safety features make use of the latest technology to protect you, your passengers and your cargo.

Drive-away locking<sup>(2)</sup>

To prevent opportunistic crime, all doors automatically lock once the vehicle speed exceeds 5 mph. The doors remain locked even if the vehicle slows or stops, although the driver or passenger locks can be released using the interior door handles. (Standard; Can be deactivated if required)

<sup>(0)</sup>Uses sensors.  
<sup>(\*)</sup>Operates at speeds over 40 mph on multi-lane roads with clearly visible lane markings.  
<sup>(1)</sup>Safety feature.  
<sup>(2)</sup>Driver assistance feature.

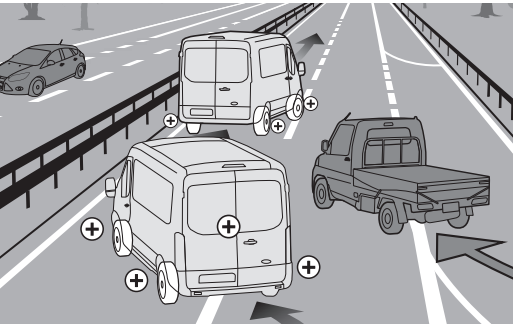
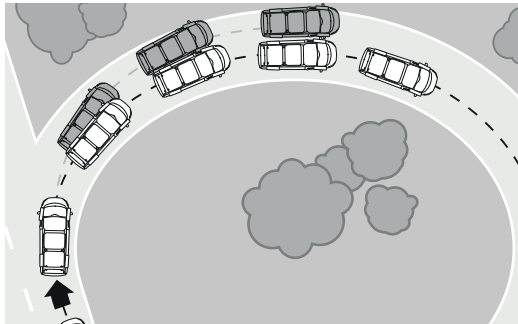


Tyre Pressure Monitoring<sup>(1)</sup>

Allows you to monitor tyre pressure while on the move. System alerts you if it detects that a tyre's pressure is too low, such as in the case of a puncture. (Option)

Driver Alert<sup>(02)</sup>

Designed to warn you if the system detects driving behaviour that indicates a drop in alertness levels. Initially, a warning icon is displayed in the instrument cluster, followed by a warning chime if driving alertness further declines. (Option as part of a pack)

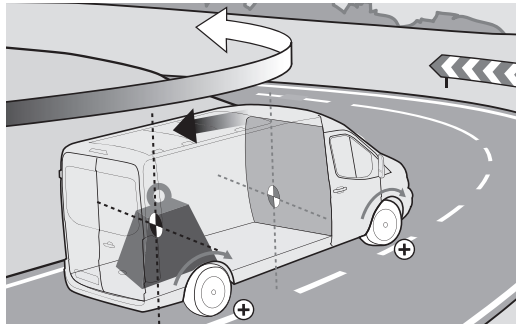


Curve Control<sup>(01)</sup>

Designed to help you maintain control of the vehicle when taking a curve too quickly. The system can apply four-wheel smart braking to reduce vehicle speed by up to 10 mph in approximately one second. (Standard)

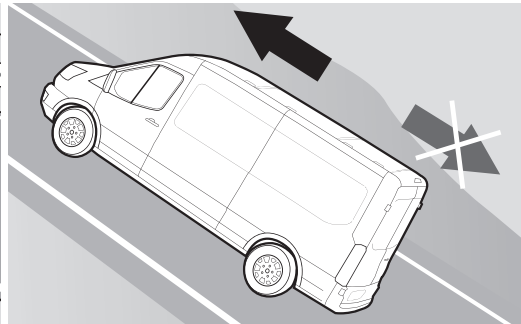
Roll-Over Mitigation<sup>(01)</sup>

Designed to identify a potentially dangerous driving situation and activate the ESC<sup>(1)</sup> to help maintain stability. (Standard)



Load Adaptive Control<sup>(01)</sup>

Designed to adjust the responses of the ESC<sup>(1)</sup> system to compensate when the vehicle is unladen, partially- or fully-laden. (Standard)



Hill Start Assist<sup>(02)</sup>

Designed to temporarily prevent you from rolling down a slope when you move your foot from the brake pedal to the accelerator pedal. It works in forward and reverse gears, so is ideal for towing and pulling heavy loads. (Standard)



Complete connectivity

Ford SYNC lets you play music and make and receive hands-free calls – all with simple voice commands. And the Ford Emergency Assistance\* feature is designed to assist occupants to place an emergency call and provide the emergency services with vehicle location information in their own language. (Standard on Trend)



Audible SMS

Have your incoming text messages read to you from your connected phone, including commonly-used abbreviations and emoticons, and you can even respond with a choice of 15 preset text messages. Compatible mobile phone required.



SYNC AppLink

Control your favourite mobile apps from your supported smartphone using voice commands and buttons on the steering wheel. (Available from summer 2014)



Bluetooth® Audio Streaming

Stream your music collection from your compatible MP3 player or mobile phone to the vehicle's audio system.



Emergency Assistance\*

Designed to assist occupants in contacting emergency services on your paired Bluetooth®-enabled phone when an airbag is deployed.



Intelligent features that make life easier

The new Transit raises the bar for vans in this class, with its outstanding range of innovative and thoughtful features.



Adaptive Cruise Control (ACC) with Forward Alert

Sophisticated cruise control system that helps to maintain a preset cruising speed and distance from the vehicle ahead. When the system senses a vehicle ahead, it decelerates automatically to keep the desired distance and accelerates back to the preset cruising speed once the road is clear. (Option)

\*Ford Emergency Assistance operates in over 30 European countries. This feature works when paired with a compatible mobile phone that is switched on and with you when an airbag is deployed (excludes knee airbags, if equipped) or the fuel pump shut off switch is activated. AppLink, Emergency Assistance and text function are not supported by all European languages. For latest information and a full list of AppLink-compatible apps please visit your regional Ford website.

**Note** The Bluetooth® word mark and logos are owned by the Bluetooth SIG, Inc. and any use of such marks by Ford Motor Company Limited and its associated companies is under licence. Other trademarks and trade names are those of their respective owners.



Rear-view camera

Select reverse and the image from the rear-view camera is displayed automatically in the rear-view mirror. Marker lines overlaid on the camera image indicate where the vehicle is heading. (Option)



Parking distance sensors, front and rear

An audible warning helps you judge the distance between your vehicle and obstacles at the front and rear, for easier parking and manoeuvring. (Standard on Trend, option on Base)



Ford Easy-Fuel capless refuelling system

A unique safeguard ensures nobody can accidentally fill up with the wrong fuel. Plus no dirty fuel caps to touch. (Standard. Optional non Easy-Fuel cap available)



Projector style halogen headlights with static cornering lights

When you turn the steering wheel beyond 30 degrees, cornering lights illuminate the appropriate side of the road for extra visibility at night. Operates at speeds up to 20 mph. (Standard on Trend, option on other series)



Power-foldable mirrors

Electrically-operated and heated with large spotter lens. Perfect for parking in tight spaces or squeezing through narrow lanes. (Standard on Trend, option on other series)





### Storage compartment with power point, AUX and USB ports above instrument cluster

Cleverly concealed storage compartment for safe stowage of items. (Standard)

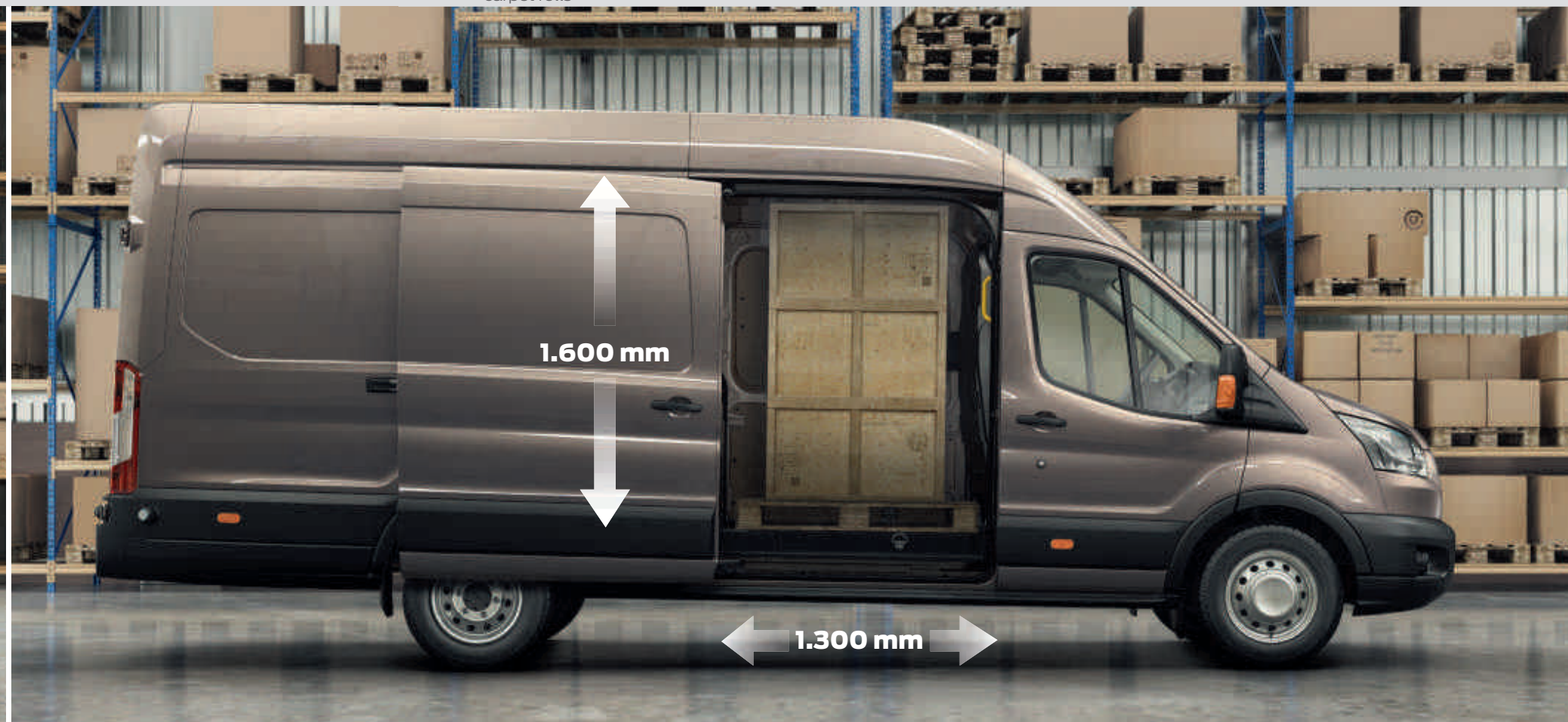
## More efficient by design

Combining high carrying capacity and maximum productivity, new Transit has the answer to all your transport needs.

### Optimised loadspace and payload

The new Ford Transit delivers exceptional load capacity. Behind the fixed steel bulkhead, you'll find up to 15.1 cu.m of cargo space\* to fill. The flat load floor and near vertical side walls help you make the most of all that space, with room to carry loads of up to 4217 mm in length (L4) and up to 2125 mm in height (H3 with front-wheel drive). Access to the load area is quick and easy too, thanks to a wide-opening sliding side door, full-height rear doors that can be opened to a full 270 degrees (standard on 'Jumbo' (L4), option on LWB (L3)) and a built-in rear bumper step.

- **9.5 cu.m to 15.1 cu.m loadspace**  
Greater load cube allows more to be carried in a single journey for improved operating efficiency
- **3044 mm (L2), 3494 mm (L3) and 4217 mm (L4) load lengths\***  
Increased load lengths can accommodate standard-length items, like pipes, building boards and carpet rolls
- Tough Easy To Clean Load Floor helps to protect your van and your load. Floor covering rises 100 mm up the sides, allowing the floor to be washed and cleaned easily
- Integrated rear bumper step provides easier loadspace access
- LED premium loadspace lighting provides maximum interior illumination (option)
- High-visibility decals reflect light when the rear doors are open at 90 degrees to warn other road users of the vehicle's presence after dark



### Fold-out table and underseat stowage compartment

The front dual passenger seat features a fold-out table and an underseat stowage compartment large enough to hold a toolbox. (Standard)



### Overhead stowage system

Transit is equipped with plenty of useful in-cab storage areas, including a new full-width overhead stowage shelf. (Standard)



### Integrated rear bumper step

New bumper design incorporates an integral step for easy access to the loadspace. (Standard).

### Easy To Clean Load Floor

Tough, Easy To Clean Load Floor covering allows you to slide loads into the cargo area and protects the painted floor underneath. (Standard on Trend, option on other series) Floor to half-height plywood load liner protection kit is also available (Standard on Trend). DIN compliant tie-down hooks and fixing points are now wall-mounted just above the floor for ease of use and to provide a clear load floor. (Standard)

### Loadspace lighting

New interior loadspace lights provide greater visibility when working inside the vehicle. For maximum illumination, super-bright LED premium lighting is available as a factory-fitted option.



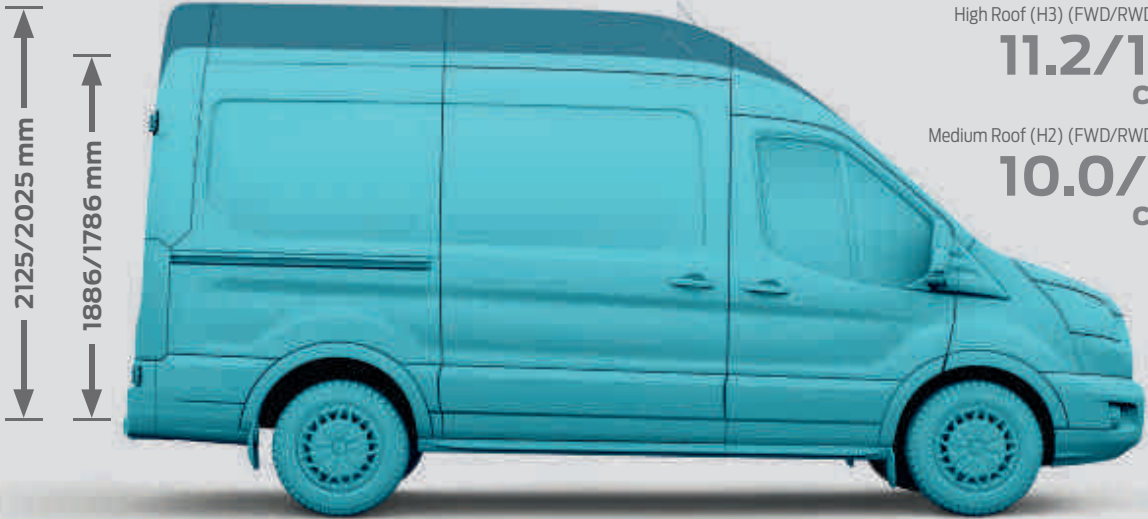
\*Measured at floor level.



Designed for hard work

Whatever you need from a van, you'll find it in the new Transit. Three load lengths, two roof heights, larger load volumes and higher gross vehicle masses. Plus a choice of driveline configurations on selected models.

\*With a full bulkhead fitted.  
FWD/RWD and AWD



Van Medium Wheelbase (L2)

High Roof (H3) (FWD/RWD and AWD)

11.2/10.7  
cu.m\*

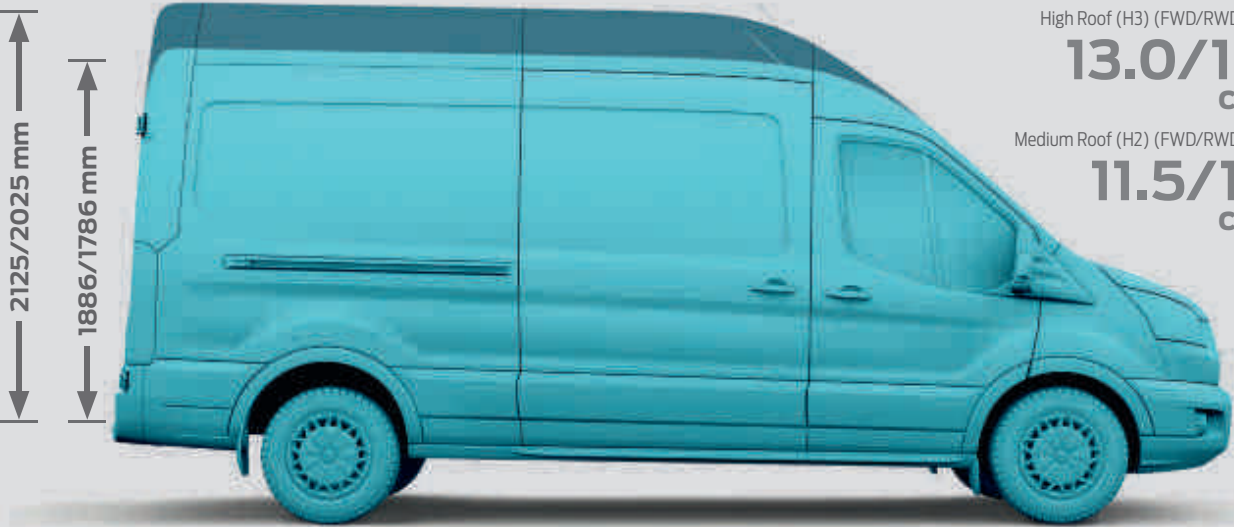
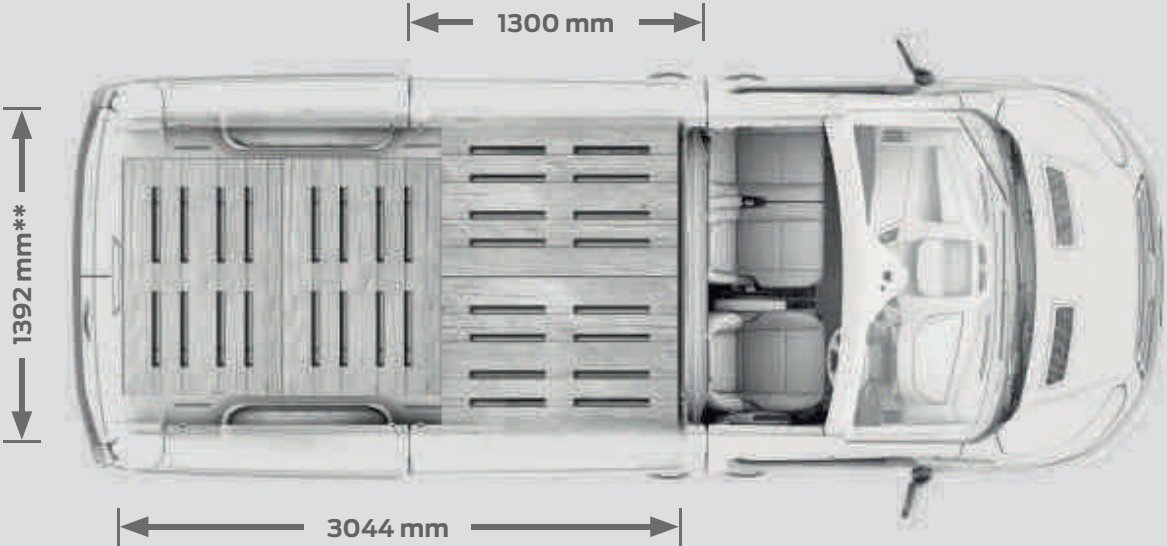
Medium Roof (H2) (FWD/RWD and AWD)

10.0/9.5  
cu.m\*

The ideal van for every job

With such a wide range of wheelbases, load volumes, payloads and powertrains, new Transit has what it takes to get the job done.

\*\*Measured between wheelhouses.



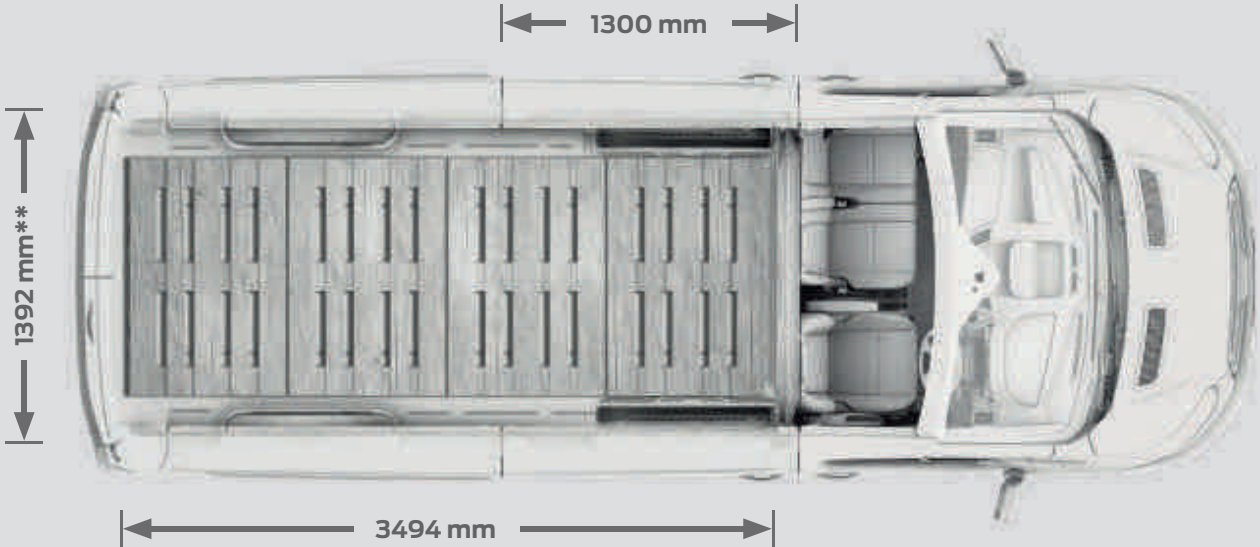
Van Long Wheelbase (L3)

High Roof (H3) (FWD/RWD and AWD)

13.0/12.4  
cu.m\*

Medium Roof (H2) (FWD/RWD and AWD)

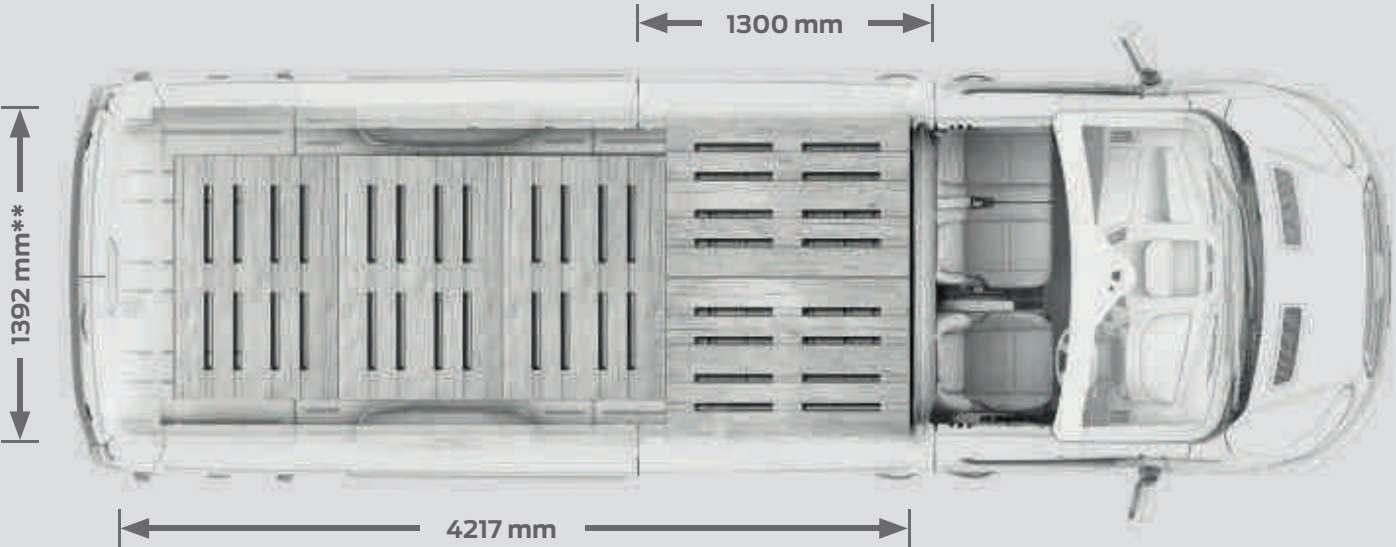
11.5/11.0  
cu.m\*



Van Long Wheelbase EF 'Jumbo' (L4)

High Roof (H3) (RWD)

15.1  
cu.m\*





# The range



## Base

### Exterior features

- Door mirror with large blind spot eliminator
- Door mirror integrated side indicators
- Rear mudflaps
- Half cap wheel covers
- Day running lights
- Headlight courtesy delay
- Passenger's sliding side load door and step
- Integrated rear bumper step
- Wide bodyside mouldings
- ESC/ABS/Hill Start Assist
- Curve Control
- Emergency Brake Warning
- Ford Easy-Fuel capless refuelling

### Option Packs

- Auto-Stop-Start Pack
- Low Visibility Pack



## Trend

### Exterior features over Base specification

- Front fog lights
- Automatic headlights
- Rain-sensing wipers
- Heated windscreen
- Power heated folding mirrors
- Projector style headlights with static cornering lights
- Front and rear parking sensors
- Twin remote keys
- Full wheel covers
- Metallic Paint

### Option Packs

- Auto-Start-Stop Pack
- Premium Visibility Pack





## Base

### Interior features

- Radio, with AUX, Bluetooth®, USB/iPod® connectivity, and remote controls
- Rake- and reach-adjustable steering column
- Easy-clean rubber floor covering in cab
- Courtesy lights with theatre dimming
- Trip computer
- Economy – Gearshift Indicator light
- Driver's 8-way seat adjust with armrest
- Dual passenger's seat with underseat stowage compartment and fold-out table
- Electrically-operated front windows
- Remote central deadlocking
- Full steel bulkhead
- Overhead stowage console
- DIN 75410 compliant tie-down loops



## Trend

### Interior features over Base specification

- Cruise control with Adjustable Speed Limiter
- Radio/CD with Ford SYNC, AUX, Bluetooth®, USB/iPod® connectivity
- Leather-trimmed 4-spoke steering wheel
- Leather-trimmed gearshift knob
- Drivers seat lumbar adjust
- Map reading courtesy lights
- Lockable glovebox
- Passenger side load door footwell illumination
- Complete load compartment half-height trim board
- Easy To Clean Load Floor



**Base roof carrier\***

Adds extra cargo-carrying capability and is the basis for various useful roof attachments. (Accessory)



**Rear window protection grille**

Grille fixes to inside of rear windows for enhanced security without obscuring rearward vision. (Option and accessory)

**Rear ladder**

For easy access to the roof. (Option and accessory)

**More flexibility**

Storage solutions, extra protection and greater versatility are all available for the Transit.



**Interior roof rack**

Two black steel racks hold a maximum of 50 kg and can be fixed to the roof inside the vehicle. (Option and Accessory Mid 2014)



**Dension Car Dock for iPhone®\***

The dock connects to your car audio system via AUX or the FM transmitter. You can play your music, use as a navigation system and take hands-free calls through the car's speakers. It even enables you to charge your smartphone\* during operation. Easy operation with large touch screen icons through the Dension app. (Accessory)

iPhone® is a trademark of Apple Inc.  
+Item covered by third party supplier's warranty, please see back cover for details.

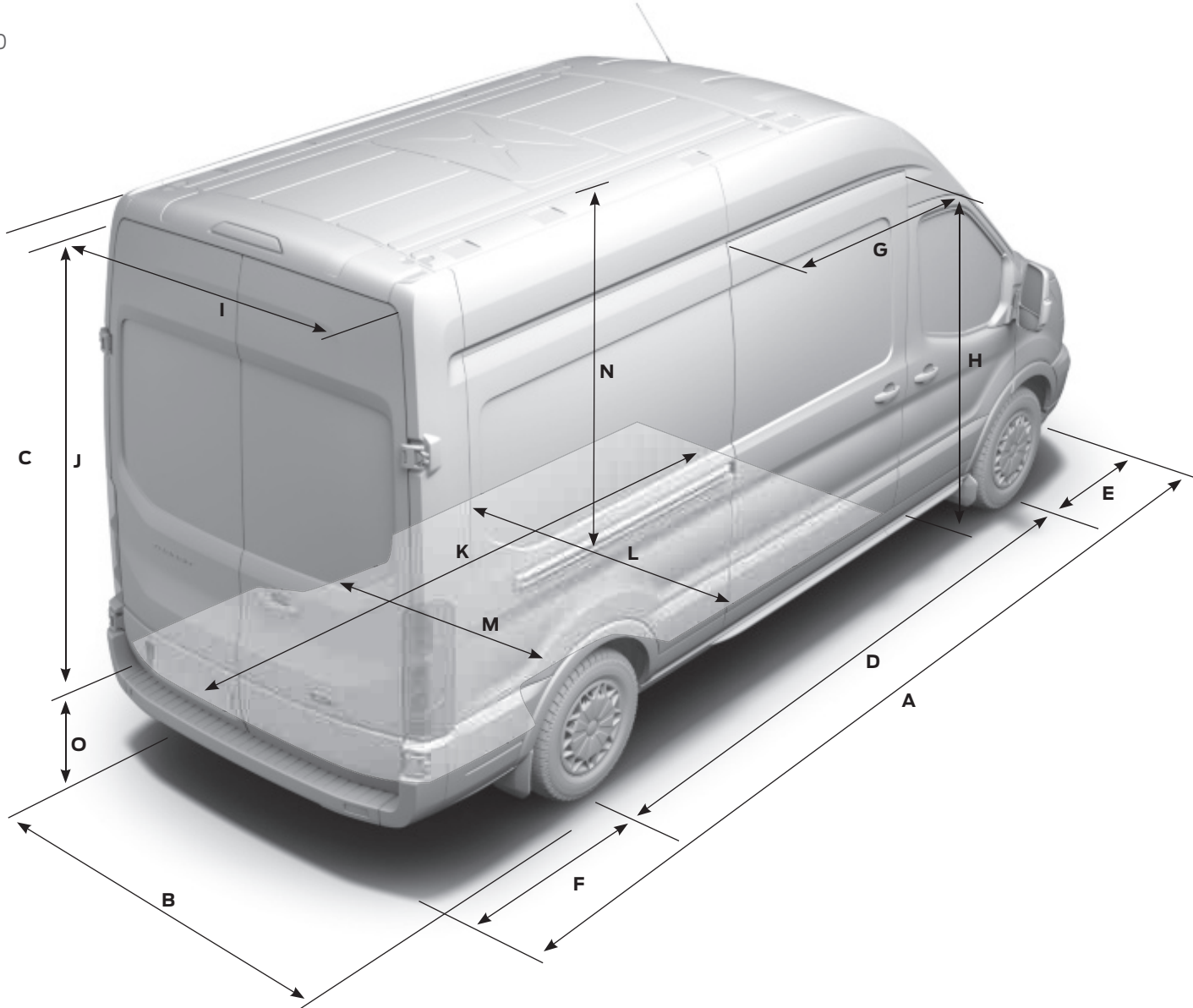


**X Vision Parking Sensors (audible)**

Linked to reverse gear. Provides an audible warning when the vehicle is reversing. (Accessory)



Dimensions



L2, H2 10.0/9.5 cu.m\* L3, H2 11.5/11.0 cu.m\*



L2, H3 11.2/10.7 cu m\* L3, H3 13.0/12.4 cu m\* L4, H3 15.1 cu m\*



\*FWD/RWD. Measured in cubic metres and with a full bulkhead fitted.

Dimensions

Dimensions

| Dimensions         |   | L2 H2 Van |             | L2 H3 Van |             | L3 H2 Van |             | L3 H3 Van |             | L4 H3 Van |
|--------------------|---|-----------|-------------|-----------|-------------|-----------|-------------|-----------|-------------|-----------|
|                    |   | FWD       | RWD/<br>AWD | FWD       | RWD/<br>AWD | FWD       | RWD/<br>AWD | FWD       | RWD/<br>AWD | RWD       |
| A                  | Overall length  | 5531      | 5531        | 5531      | 5531        | 5981      | 5981        | 5981      | 5981        | 6704      |
| B                  | Overall width with mirrors                              | 2474      | 2474        | 2474      | 2474        | 2474      | 2474        | 2474      | 2474        | 2474      |
|                    | Overall width with folded back mirrors                  | 2094      | 2094        | 2094      | 2094        | 2094      | 2094        | 2094      | 2094        | 2094      |
|                    | Overall width without mirrors (SRW)                     | 2059      | 2059        | 2059      | 2059        | 2059      | 2059        | 2059      | 2059        | 2025      |
|                    | Overall width without mirrors (DRW)                     | –         | –           | –         | –           | –         | –           | –         | –           | 2126      |
| C                  | Overall height*   | 2490-2550 | 2490-2550   | 2729-2789 | 2729-2789   | 2481-2547 | 2481-2547   | 2720-2786 | 2720-2786   | 2746-2781 |
| D                  | Wheelbase   | 3300      | 3300        | 3300      | 3300        | 3750      | 3750        | 3750      | 3750        | 3750      |
| E                  | Front of vehicle to front wheel centre                  | 1023      | 1023        | 1023      | 1023        | 1023      | 1023        | 1023      | 1023        | 1023      |
| F                  | Rear of vehicle to rear wheel centre                    | 1208      | 1208        | 1208      | 1208        | 1208      | 1208        | 1208      | 1208        | 1931      |
| G                  | Side door entry width                                   | 1300      | 1300        | 1300      | 1300        | 1300      | 1300        | 1300      | 1300        | 1300      |
| H                  | Side load door entry height                             | 1700      | 1600        | 1700      | 1600        | 1700      | 1600        | 1700      | 1600        | 1600      |
| I                  | Rear door/tailgate entry width                          | 1565      | 1565        | 1565      | 1565        | 1565      | 1565        | 1565      | 1565        | 1565      |
| J                  | Rear door/tailgate entry height                         | 1748      | 1648        | 1987      | 1887        | 1748      | 1648        | 1987      | 1887        | 1887      |
| K                  | Maximum loadspace length (at floor with bulkhead)       | 3044      | 3044        | 3044      | 3044        | 3494      | 3494        | 3494      | 3494        | 4217      |
|                    | Maximum loadspace length (at 1.2m height with bulkhead) | 2900      | 2900        | 2900      | 2900        | 3350      | 3350        | 3350      | 3350        | 4073      |
| L                  | Maximum loadspace width                                 | 1784      | 1784        | 1784      | 1784        | 1784      | 1784        | 1784      | 1784        | 1784      |
| M                  | Loadspace between wheel arches (SRW)                    | 1392      | 1392        | 1392      | 1392        | 1392      | 1392        | 1392      | 1392        | 1392      |
|                    | Loadspace between wheel arches (DRW)                    | –         | –           | –         | –           | –         | –           | –         | –           | 1154      |
| N                  | Load floor to roof                                      | 1886      | 1786        | 2125      | 2025        | 1886      | 1786        | 2125      | 2025        | 2025      |
| O                  | Loading height*   | 511-668   | 511-668     | 511-668   | 511-668     | 522-684   | 522-684     | 522-684   | 522-684     | 606-675   |
| P                  | Maximum load volume (with bulkhead) (cu.m)              | 10.0      | 9.5         | 11.2      | 10.7        | 11.5      | 11.0        | 13.0      | 12.4        | 15.1      |
|                    | Loadspace (with bulkhead) (VDA) (cu.m)                  | 9.3       | 8.8         | 10.3      | 9.9         | 10.8      | 10.2        | 12.0      | 11.5        | 14.1      |
| Turning circle (m) |   |           |             |           |             |           |             |           |             |           |
|                    | Kerb to kerb  | 11.9      | 11.9        | 11.9      | 11.9        | 13.3      | 13.3        | 13.3      | 13.3        | 13.3      |
|                    | Wall to wall  | 12.6      | 12.6        | 12.6      | 12.6        | 13.9      | 13.9        | 13.9      | 13.9        | 13.9      |

L2 = Medium wheelbase, L3 = Long wheelbase, L4 = Long wheelbase extended length. H2 = Medium Roof, H3 = High Roof, FWD = Front-Wheel Drive, RWD = Rear-Wheel Drive, AWD = All-Wheel Drive. All dimensions (shown in mm) are subject to manufacturing tolerances and refer to minimum specification models and do not include additional equipment. \*Height dimensions show the range from minimum to maximum of a fully laden, lowest payload vehicle to unladen highest payload vehicle. These illustrations are for guidance only. **VDA method** This is the method used by the Verband der Automobilindustrie (VDA) in Germany. A VDA figure is determined by filling the loadspace with 'litre' blocks, each measuring 200x100x50 mm. The blocks are then counted, and the numerical result is converted into cubic metres. **Maximum load volume** method simply measures the volume of a fine-grained material such as sand or rice which can be deposited into the loadspace.

Model availability

|                                     | 290 L2 H2 | 290 L2 H3 | 310 L2 H2 | 310 L2 H3 | 310 L3 H2 | 310 L3 H3 | 330 L2 H2 | 330 L2 H3 | 330 L3 H2 | 330 L3 H3 | 350 L2 H2 | 350 L2 H3 | 350 L3 H2 | 350 L3 H3 | 350 L4 H3 | 350HD L4 H3 | 430 L4 H3 | 470 L4 H3 |
|-------------------------------------|-----------|-----------|-----------|-----------|-----------|-----------|-----------|-----------|-----------|-----------|-----------|-----------|-----------|-----------|-----------|-------------|-----------|-----------|
| FWD                                 |           |           |           |           |           |           |           |           |           |           |           |           |           |           |           |             |           |           |
| 2.2 TDCi 100 PS (74 kW)             | ●         | ●         | ●         | ●         | ●         | ●         | ●         | ●         | ●         | ●         | ●         | ●         | ●         | ●         | -         | -           | -         | -         |
| 2.2 TDCi 125 PS (92 kW)             | ●         | ●         | ●         | ●         | ●         | ●         | -         | -         | ●         | ●         | ●         | ●         | ●         | ●         | -         | -           | -         | -         |
| 2.2 TDCi 125 PS (92 kW) ECOnetic    | -         | -         | ●         | -         | ●         | -         | ●         | -         | ●         | -         | ●         | -         | ●         | -         | -         | -           | -         | -         |
| 2.2 TDCi 155 PS (114 kW)            | ●         | ●         | ●         | ●         | ●         | ●         | ●         | ●         | ●         | ●         | ●         | ●         | ●         | ●         | -         | -           | -         | -         |
| RWD                                 |           |           |           |           |           |           |           |           |           |           |           |           |           |           |           |             |           |           |
| 2.2 TDCi 100 PS (74 kW)             | -         | -         | -         | -         | -         | -         | -         | -         | -         | -         | ●         | ●         | ●         | ●         | ●         | -           | -         | -         |
| 2.2 TDCi 125 PS (92 kW)             | -         | -         | -         | -         | -         | -         | -         | -         | -         | -         | ●         | ●         | ●         | ●         | ●         | ●           | -         | ●         |
| 2.2 TDCi 155 PS (114 kW)            | -         | -         | -         | -         | -         | -         | -         | -         | -         | -         | ●         | ●         | ●         | ●         | ●         | ●           | -         | ●         |
| 2.2 TDCi 125 PS (92 kW) HDT Stg VI  | -         | -         | -         | -         | -         | -         | -         | -         | -         | -         | -         | -         | -         | -         | -         | -           | ●         | -         |
| 2.2 TDCi 155 PS (114 kW) HDT Stg VI | -         | -         | -         | -         | -         | -         | -         | -         | -         | -         | ●         | ●         | ●         | ●         | -         | -           | -         | -         |
| AWD                                 |           |           |           |           |           |           |           |           |           |           |           |           |           |           |           |             |           |           |
| 2.2 TDCi 125 PS (92 kW)             | -         | -         | -         | -         | -         | -         | -         | -         | -         | -         | ●         | ●         | ●         | ●         | -         | -           | -         | -         |

● = Available, - = Not available. L2 = Medium wheelbase, L3 = Long wheelbase, L4 = Long wheelbase extended length. H2 = Medium Roof, H3 = High Roof, HD = Heavy Duty, FWD = Front-Wheel Drive, RWD = Rear-Wheel Drive, AWD = All-Wheel Drive.



| Medium wheelbase   |                                    |                            |                             |                                |                              |                               |                             |                         |  |  |  | Fuel consumption in km mpg<br>(L/100) <sup>®</sup> |             |            |  |
|--|------------------------------------|----------------------------|-----------------------------|--------------------------------|------------------------------|-------------------------------|-----------------------------|-------------------------|--|--|--|--|-------------|------------|--|
|  | Gross<br>payload (kg) <sup>®</sup> | Gross vehicle<br>mass (kg) | Kerb mass (kg) <sup>•</sup> | Front axle<br>plated mass (kg) | Front axle<br>kerb mass (kg) | Rear axle<br>plated mass (kg) | Rear axle<br>kerb mass (kg) | Axle ratio <sup>®</sup> | Max. GTM (kg)<br>with quoted<br>axle ratio | Max. trailer<br>weight/braked<br>(unbraked) (kg) | CO <sub>2</sub> emissions<br>(g/km) <sup>®</sup> | Urban  | Extra Urban | Combined   |  |
| 290 L2 Van (FWD) H2 Medium Roof                                    |                                    |                            |                             |                                |                              |                               |                             |                         |  |  |  |  |             |            |  |
| 2.2 TDCi 100 PS  | 940                                | 2900                       | 1960                        | 1625                           | 1208                         | 1575                          | 752                         | 4.19                    | 4900                                       | 2700 (750)                                       | 197  | 33.6 (8.4)   | 40.9 (6.9)  | 37.7 (7.5) |  |
| 2.2 TDCi 100 PS (with Start-Stop)                                  | 920                                | 2900                       | 1980                        | 1625                           | 1222                         | 1575                          | 758                         | 4.19                    | 4900                                       | 2650 (750)                                       | 190  | 36.7 (7.7)   | 40.9 (6.9)  | 39.2 (7.2) |  |
| 2.2 TDCi 125/155 PS  | 940                                | 2900                       | 1960                        | 1625                           | 1208                         | 1575                          | 752                         | 4.19                    | 5100                                       | 2800 (750)                                       | 197  | 33.6 (8.4)   | 40.9 (6.9)  | 37.7 (7.5) |  |
| 2.2 TDCi 125/155 PS (with Start-Stop)                              | 920                                | 2900                       | 1980                        | 1625                           | 1222                         | 1575                          | 758                         | 4.19                    | 5100                                       | 2800 (750)                                       | 190  | 36.7 (7.7)   | 40.9 (6.9)  | 39.2 (7.2) |  |
| 290 L2 Van (FWD) H3 High Roof                                      |                                    |                            |                             |                                |                              |                               |                             |                         |  |  |  |  |             |            |  |
| 2.2 TDCi 100 PS  | 919                                | 2900                       | 1981                        | 1625                           | 1212                         | 1575                          | 769                         | 4.19                    | 4900                                       | 2700 (750)                                       | 197  | 33.6 (8.4)   | 40.9 (6.9)  | 37.7 (7.5) |  |
| 2.2 TDCi 100 PS (with Start-Stop)                                  | 898                                | 2900                       | 2002                        | 1625                           | 1227                         | 1575                          | 775                         | 4.19                    | 4900                                       | 2650 (750)                                       | 193  | 36.2 (7.8)   | 40.4 (7.0)  | 38.7 (7.3) |  |
| 2.2 TDCi 125/155 PS  | 919                                | 2900                       | 1981                        | 1625                           | 1212                         | 1575                          | 769                         | 4.19                    | 5100                                       | 2800 (750)                                       | 197  | 33.6 (8.4)   | 40.9 (6.9)  | 37.7 (7.5) |  |
| 2.2 TDCi 125/155 PS (with Start-Stop)                              | 898                                | 2900                       | 2002                        | 1625                           | 1227                         | 1575                          | 775                         | 4.19                    | 5100                                       | 2800 (750)                                       | 193  | 36.2 (7.8)   | 40.4 (7.0)  | 38.7 (7.3) |  |
| 310 L2 Van (FWD) H2 Medium Roof                                    |                                    |                            |                             |                                |                              |                               |                             |                         |  |  |  |  |             |            |  |
| 2.2 TDCi 100 PS  | 1140                               | 3100                       | 1960                        | 1650                           | 1208                         | 1725                          | 752                         | 4.19                    | 4900                                       | 2700 (750)                                       | 197  | 33.6 (8.4)   | 40.9 (6.9)  | 37.7 (7.5) |  |
| 2.2 TDCi 100 PS (with Start-Stop)                                  | 1120                               | 3100                       | 1980                        | 1650                           | 1222                         | 1725                          | 758                         | 4.19                    | 4900                                       | 2650 (750)                                       | 190  | 36.7 (7.7)   | 40.9 (6.9)  | 39.2 (7.2) |  |
| 2.2 TDCi 125/155 PS  | 1140                               | 3100                       | 1960                        | 1650                           | 1208                         | 1725                          | 752                         | 4.19                    | 5100                                       | 2800 (750)                                       | 197  | 33.6 (8.4)   | 40.9 (6.9)  | 37.7 (7.5) |  |
| 2.2 TDCi 125/155 PS (with Start-Stop)                              | 1120                               | 3100                       | 1980                        | 1650                           | 1222                         | 1725                          | 758                         | 4.19                    | 5100                                       | 2800 (750)                                       | 190  | 36.7 (7.7)   | 40.9 (6.9)  | 39.2 (7.2) |  |
| 2.2 TDCi ECOnetic (with Start-Stop)                                | 1137                               | 3100                       | 1963                        | 1650                           | 1228                         | 1725                          | 735                         | 4.19                    | 3850                                       | 1600 (750)                                       | 177  | 38.7 (7.3)   | 43.5 (6.5)  | 41.5 (6.8) |  |
| 2.2 TDCi ECOnetic (with Start-Stop and fixed 62 mph Speed Limiter) | 1137                               | 3100                       | 1963                        | 1650                           | 1228                         | 1725                          | 735                         | 4.19                    | 3850                                       | 1600 (750)                                       | 169  | 38.7 (7.3)   | 47.9 (5.9)  | 44.1 (6.4) |  |
| 310 L2 Van (FWD) H3 High Roof                                      |                                    |                            |                             |                                |                              |                               |                             |                         |  |  |  |  |             |            |  |
| 2.2 TDCi 100 PS  | 1119                               | 3100                       | 1981                        | 1650                           | 1212                         | 1725                          | 769                         | 4.19                    | 4900                                       | 2700 (750)                                       | 197  | 33.6 (8.4)   | 40.9 (6.9)  | 37.7 (7.5) |  |
| 2.2 TDCi 100 PS (with Start-Stop)                                  | 1098                               | 3100                       | 2002                        | 1650                           | 1227                         | 1725                          | 775                         | 4.19                    | 4900                                       | 2650 (750)                                       | 193  | 36.2 (7.8)   | 40.4 (7.0)  | 38.7 (7.3) |  |
| 2.2 TDCi 125/155 PS  | 1119                               | 3100                       | 1981                        | 1650                           | 1212                         | 1725                          | 769                         | 4.19                    | 5100                                       | 2800 (750)                                       | 197  | 33.6 (8.4)   | 40.9 (6.9)  | 37.7 (7.5) |  |
| 2.2 TDCi 125/155 PS (with Start-Stop)                              | 1098                               | 3100                       | 2002                        | 1650                           | 1227                         | 1725                          | 775                         | 4.19                    | 5100                                       | 2800 (750)                                       | 193  | 36.2 (7.8)   | 40.4 (7.0)  | 38.7 (7.3) |  |
| 330 L2 Van (FWD) H2 Medium Roof                                    |                                    |                            |                             |                                |                              |                               |                             |                         |  |  |  |  |             |            |  |
| 2.2 TDCi 100 PS  | 1330                               | 3300                       | 1970                        | 1750                           | 1213                         | 2050                          | 757                         | 4.71                    | 4900                                       | 2650 (750)                                       | 199  | 32.8 (8.6)   | 41.5 (6.8)  | 37.7 (7.5) |  |
| 2.2 TDCi 100 PS (with Start-Stop)                                  | 1311                               | 3300                       | 1989                        | 1750                           | 1227                         | 2050                          | 762                         | 4.71                    | 4900                                       | 2650 (750)                                       | 192  | 36.2 (7.8)   | 41.5 (6.8)  | 39.2 (7.2) |  |
| 2.2 TDCi 125 PS  | 1330                               | 3300                       | 1970                        | 1750                           | 1213                         | 2050                          | 757                         | 4.71                    | 5325                                       | 2800 (750)                                       | 199  | 32.8 (8.6)   | 41.5 (6.8)  | 37.7 (7.5) |  |
| 2.2 TDCi 125 PS (with Start-Stop)                                  | 1311                               | 3300                       | 1989                        | 1750                           | 1227                         | 2050                          | 762                         | 4.71                    | 5325                                       | 2800 (750)                                       | 192  | 36.2 (7.8)   | 41.5 (6.8)  | 39.2 (7.2) |  |
| 2.2 TDCi 155 PS  | 1330                               | 3300                       | 1970                        | 1750                           | 1213                         | 2050                          | 757                         | 4.71                    | 5325                                       | 2800 (750)                                       | 199  | 32.8 (8.6)   | 41.5 (6.8)  | 37.7 (7.5) |  |
| 2.2 TDCi 155 PS (with Start-Stop)                                  | 1311                               | 3300                       | 1989                        | 1750                           | 1227                         | 2050                          | 762                         | 4.71                    | 5325                                       | 2800 (750)                                       | 192  | 36.2 (7.8)   | 41.5 (6.8)  | 39.2 (7.2) |  |
| 2.2 TDCi ECOnetic (with Start-Stop)                                | 1327                               | 3300                       | 1973                        | 1750                           | 1233                         | 2050                          | 740                         | 4.19                    | 4050                                       | 1800 (750)                                       | 177  | 38.7 (7.3)   | 43.5 (6.5)  | 41.5 (6.8) |  |
| 2.2 TDCi ECOnetic (with Start-Stop and fixed 62 mph Speed Limiter) | 1327                               | 3300                       | 1973                        | 1750                           | 1233                         | 2050                          | 740                         | 4.19                    | 4050                                       | 1800 (750)                                       | 169  | 38.7 (7.3)   | 47.9 (5.9)  | 44.1 (6.4) |  |
| 330 L2 Van (FWD) H3 High Roof                                      |                                    |                            |                             |                                |                              |                               |                             |                         |  |  |  |  |             |            |  |
| 2.2 TDCi 100 PS  | 1309                               | 3300                       | 1991                        | 1750                           | 1217                         | 2050                          | 774                         | 4.71                    | 4250                                       | 2000 (750)                                       | 199  | 32.8 (8.6)   | 41.5 (6.8)  | 37.7 (7.5) |  |
| 2.2 TDCi 100 PS (with Start-Stop)                                  | 1288                               | 3300                       | 2012                        | 1750                           | 1232                         | 2050                          | 780                         | 4.71                    | 4250                                       | 2000 (750)                                       | 194  | 35.8 (7.9)   | 40.9 (6.9)  | 38.7 (7.3) |  |
| 2.2 TDCi 125 PS  | 1309                               | 3300                       | 1991                        | 1750                           | 1217                         | 2050                          | 774                         | 4.71                    | 5325                                       | 2800 (750)                                       | 199  | 32.8 (8.6)   | 41.5 (6.8)  | 37.7 (7.5) |  |
| 2.2 TDCi 125 PS (with Start-Stop)                                  | 1288                               | 3300                       | 2012                        | 1750                           | 1232                         | 2050                          | 780                         | 4.71                    | 5325                                       | 2800 (750)                                       | 194  | 35.8 (7.9)   | 40.9 (6.9)  | 38.7 (7.3) |  |
| 2.2 TDCi 155 PS  | 1309                               | 3300                       | 1991                        | 1750                           | 1217                         | 2050                          | 774                         | 4.71                    | 5325                                       | 2800 (750)                                       | 199  | 32.8 (8.6)   | 41.5 (6.8)  | 37.7 (7.5) |  |
| 2.2 TDCi 155 PS (with Start-Stop)                                  | 1288                               | 3300                       | 2012                        | 1750                           | 1232                         | 2050                          | 780                         | 4.71                    | 5325                                       | 2800 (750)                                       | 194  | 35.8 (7.9)   | 40.9 (6.9)  | 38.7 (7.3) |  |
| 350 L2 Van (FWD) H2 Medium Roof                                    |                                    |                            |                             |                                |                              |                               |                             |                         |  |  |  |  |             |            |  |
| 2.2 TDCi 100 PS  | 1530                               | 3500                       | 1970                        | 1750                           | 1213                         | 2150                          | 757                         | 4.71                    | 4250                                       | 2000 (750)                                       | 199  | 32.8 (8.6)   | 41.5 (6.8)  | 37.7 (7.5) |  |
| 2.2 TDCi 100 PS (with Start-Stop)                                  | 1511                               | 3500                       | 1989                        | 1750                           | 1227                         | 2150                          | 762                         | 4.71                    | 4250                                       | 2000 (750)                                       | 192  | 36.2 (7.8)   | 41.5 (6.8)  | 39.2 (7.2) |  |
| 2.2 TDCi 125 PS  | 1530                               | 3500                       | 1970                        | 1750                           | 1213                         | 2150                          | 757                         | 4.71                    | 5325                                       | 2800 (750)                                       | 199  | 32.8 (8.6)   | 41.5 (6.8)  | 37.7 (7.5) |  |
| 2.2 TDCi 125 PS (with Start-Stop)                                  | 1511                               | 3500                       | 1989                        | 1750                           | 1227                         | 2150                          | 762                         | 4.71                    | 5325                                       | 2800 (750)                                       | 192  | 36.2 (7.8)   | 41.5 (6.8)  | 39.2 (7.2) |  |
| 2.2 TDCi 155 PS  | 1530                               | 3500                       | 1970                        | 1750                           | 1213                         | 2150                          | 757                         | 4.71                    | 5325                                       | 2800 (750)                                       | 199  | 32.8 (8.6)   | 41.5 (6.8)  | 37.7 (7.5) |  |
| 2.2 TDCi 155 PS (with Start-Stop)                                  | 1511                               | 3500                       | 1989                        | 1750                           | 1227                         | 2150                          | 762                         | 4.71                    | 5325                                       | 2800 (750)                                       | 192  | 36.2 (7.8)   | 41.5 (6.8)  | 39.2 (7.2) |  |
| 2.2 TDCi ECOnetic (with Start-Stop)                                | 1527                               | 3500                       | 1973                        | 1750                           | 1233                         | 2150                          | 740                         | 4.19                    | 4250                                       | 2000 (750)                                       | 177  | 38.7 (7.3)   | 43.5 (6.5)  | 41.5 (6.8) |  |
| 2.2 TDCi ECOnetic (with Start-Stop and fixed 62 mph Speed Limiter) | 1527                               | 3500                       | 1973                        | 1750                           | 1233                         | 2150                          | 740                         | 4.19                    | 4250                                       | 2000 (750)                                       | 169  | 38.7 (7.3)   | 47.9 (5.9)  | 44.1 (6.4) |  |
| 350 L2 Van (FWD) H3 High Roof                                      |                                    |                            |                             |                                |                              |                               |                             |                         |  |  |  |  |             |            |  |
| 2.2 TDCi 100 PS  | 1509                               | 3500                       | 1991                        | 1750                           | 1217                         | 2150                          | 774                         | 4.71                    | 4250                                       | 2000 (750)                                       | 199  | 32.8 (8.6)   | 41.5 (6.8)  | 37.7 (7.5) |  |
| 2.2 TDCi 100 PS (with Start-Stop)                                  | 1488                               | 3500                       | 2012                        | 1750                           | 1232                         | 2150                          | 780                         | 4.71                    | 4250                                       | 2000 (750)                                       | 194  | 35.8 (7.9)   | 40.9 (6.9)  | 38.7 (7.3) |  |
| 2.2 TDCi 125 PS  | 1509                               | 3500                       | 1991                        | 1750                           | 1217                         | 2150                          | 774                         | 4.71                    | 5325                                       | 2800 (750)                                       | 199  | 32.8 (8.6)   | 41.5 (6.8)  | 37.7 (7.5) |  |
| 2.2 TDCi 125 PS (with Start-Stop)                                  | 1488                               | 3500                       | 2012                        | 1750                           | 1232                         | 2150                          | 780                         | 4.71                    | 5325                                       | 2800 (750)                                       | 194  | 35.8 (7.9)   | 40.9 (6.9)  | 38.7 (7.3) |  |
| 2.2 TDCi 155 PS  | 1509                               | 3500                       | 1991                        | 1750                           | 1217                         | 2150                          | 774                         | 4.71                    | 5325                                       | 2800 (750)                                       | 199  | 32.8 (8.6)   | 41.5 (6.8)  | 37.7 (7.5) |  |
| 2.2 TDCi 155 PS (with Start-Stop)                                  | 1488                               | 3500                       | 2012                        | 1750                           | 1232                         | 2150                          | 780                         | 4.71                    | 5325                                       | 2800 (750)                                       | 194  | 35.8 (7.9)   | 40.9 (6.9)  | 38.7 (7.3) |  |

Weights, loads and fuel

| Medium wheelbase                           |                                 |                         |                             |                             |                           |                            |                          |                         |                                      |  |   | Fuel consumption in km mpg (L/100) <sup>®</sup> |             |            |
|--|---------------------------------|-------------------------|-----------------------------|-----------------------------|---------------------------|----------------------------|--------------------------|-------------------------|--------------------------------------|--|---|---|-------------|------------|
|  | Gross payload (kg) <sup>®</sup> | Gross vehicle mass (kg) | Kerb mass (kg) <sup>•</sup> | Front axle plated mass (kg) | Front axle kerb mass (kg) | Rear axle plated mass (kg) | Rear axle kerb mass (kg) | Axle ratio <sup>®</sup> | Max. GTM (kg) with quoted axle ratio | Max. trailer weight/braked (unbraked) (kg) | CO <sub>2</sub> emissions (g/km) <sup>®</sup> | Urban   | Extra Urban | Combined   |
| 350 L2 Van (RWD) H2 Medium Roof            |                                 |                         |                             |                             |                           |                            |                          |                         |                                      |  |   |   |             |            |
| 2.2 TDCi 125/155 PS                        | 1416                            | 3500                    | 2084                        | 1750/1850                   | 1191                      | 2150                       | 893                      | 3.15                    | 5500                                 | 2800 (750)                                 | 209   | 31.0 (9.1)                                      | 39.2 (7.2)  | 35.8 (7.9) |
| 2.2 TDCi 125/155 PS (with Start-Stop)      | 1409                            | 3500                    | 2091                        | 1750/1850                   | 1196                      | 2150                       | 895                      | 3.15                    | 5500                                 | 2800 (750)                                 | 201   | 33.6 (8.4)                                      | 39.2 (7.2)  | 37.2 (7.6) |
| 2.2 TDCi 100 PS                            | 1416                            | 3500                    | 2084                        | 1750/1850                   | 1191                      | 2150                       | 893                      | 3.31                    | 5000                                 | 2650 (750)                                 | 216   | 29.1 (9.7)                                      | 38.7 (7.3)  | 34.5 (8.2) |
| 2.2 TDCi 100 PS (with Start-Stop)          | 1409                            | 3500                    | 2091                        | 1750/1850                   | 1196                      | 2150                       | 895                      | 3.31                    | 5000                                 | 2650 (750)                                 | 208   | 32.1 (8.8)                                      | 38.7 (7.3)  | 35.8 (7.9) |
| 2.2 TDCi 125/155 PS                        | 1416                            | 3500                    | 2084                        | 1750/1850                   | 1191                      | 2150                       | 893                      | 3.55                    | 6000/6300                            | 2800 (750)                                 | 221   | 28.3 (10.0)                                     | 38.2 (7.4)  | 33.6 (8.4) |
| 2.2 TDCi 125/155 PS (with Start-Stop)      | 1409                            | 3500                    | 2091                        | 1750/1850                   | 1196                      | 2150                       | 895                      | 3.55                    | 6000/6300                            | 2800 (750)                                 | 213   | 30.4 (9.3)                                      | 38.2 (7.4)  | 34.9 (8.1) |
| 2.2 TDCi 100 PS                            | 1416                            | 3500                    | 2084                        | 1750/1850                   | 1191                      | 2150                       | 893                      | 3.73                    | 5500                                 | 2800 (750)                                 | 232   | 26.7 (10.6)                                     | 36.7 (7.7)  | 32.1 (8.8) |
| 2.2 TDCi 100 PS (with Start-Stop)          | 1409                            | 3500                    | 2091                        | 1750/1850                   | 1196                      | 2150                       | 895                      | 3.73                    | 5500                                 | 2800 (750)                                 | 224   | 28.8 (9.8)                                      | 36.7 (7.7)  | 33.2 (8.5) |
| 2.2 TDCi HDT6 125/155 PS (with Start-Stop) | 1364                            | 3500                    | 2136                        | 1750/1850                   | 1232                      | 2150                       | 904                      | 3.31                    | 5500                                 | 2800 (750)                                 | 215   | 30.4 (9.3)                                      | 37.7 (7.5)  | 34.5 (8.2) |
| 350 L2 Van (RWD) H3 High Roof              |                                 |                         |                             |                             |                           |                            |                          |                         |                                      |  |   |   |             |            |
| 2.2 TDCi 125/155 PS                        | 1393                            | 3500                    | 2107                        | 1750/1850                   | 1196                      | 2150                       | 911                      | 3.15                    | 5500                                 | 2800 (750)                                 | 209   | 31.0 (9.1)                                      | 39.2 (7.2)  | 35.8 (7.9) |
| 2.2 TDCi 125/155 PS (with Start-Stop)      | 1386                            | 3500                    | 2114                        | 1750/1850                   | 1201                      | 2150                       | 913                      | 3.15                    | 5500                                 | 2800 (750)                                 | 204   | 32.8 (8.6)                                      | 38.7 (7.3)  | 36.2 (7.8) |
| 2.2 TDCi 100 PS                            | 1393                            | 3500                    | 2107                        | 1750/1850                   | 1196                      | 2150                       | 911                      | 3.31                    | 5000                                 | 2650 (750)                                 | 216   | 29.1 (9.7)                                      | 38.7 (7.3)  | 34.5 (8.2) |
| 2.2 TDCi 100 PS (with Start-Stop)          | 1386                            | 3500                    | 2114                        | 1750/1850                   | 1201                      | 2150                       | 913                      | 3.31                    | 5000                                 | 2650 (750)                                 | 210   | 31.7 (8.9)                                      | 38.2 (7.4)  | 35.3 (8.0) |
| 2.2 TDCi 125/155 PS                        | 1393                            | 3500                    | 2107                        | 1750/1850                   | 1196                      | 2150                       | 911                      | 3.55                    | 6000/6300                            | 2800 (750)                                 | 221   | 28.3 (10.0)                                     | 38.2 (7.4)  | 33.6 (8.4) |
| 2.2 TDCi 125/155 PS (with Start-Stop)      | 1386                            | 3500                    | 2114                        | 1750/1850                   | 1201                      | 2150                       | 913                      | 3.55                    | 6000/6300                            | 2800 (750)                                 | 214   | 30.1 (9.4)                                      | 37.7 (7.5)  | 34.5 (8.2) |
| 2.2 TDCi 100 PS                            | 1393                            | 3500                    | 2107                        | 1750/1850                   | 1196                      | 2150                       | 911                      | 3.73                    | 5500                                 | 2800 (750)                                 | 232   | 26.7 (10.6)                                     | 36.7 (7.7)  | 32.1 (8.8) |
| 2.2 TDCi 100 PS (with Start-Stop)          | 1386                            | 3500                    | 2114                        | 1750/1850                   | 1201                      | 2150                       | 913                      | 3.73                    | 5500                                 | 2800 (750)                                 | 226   | 28.5 (9.9)                                      | 36.2 (7.8)  | 32.8 (8.6) |
| 2.2 TDCi HDT6 125/155 PS (with Start-Stop) | 1342                            | 3500                    | 2158                        | 1750/1850                   | 1237                      | 2150                       | 921                      | 3.31                    | 5500                                 | 2800 (750)                                 | 215   | 30.4 (9.3)                                      | 37.7 (7.5)  | 34.5 (8.2) |
| 350 L2 Van (AWD) H2 Medium Roof            |                                 |                         |                             |                             |                           |                            |                          |                         |                                      |  |   |   |             |            |
| 2.2 TDCi 125/155 PS                        | 1335                            | 3500                    | 2165                        | 1750/1850                   | 1261                      | 2150                       | 904                      | 4.1                     | 5500                                 | 2800 (750)                                 | 255   | 24.6 (11.5)                                     | 32.5 (8.7)  | 29.1 (9.7) |
| 350 L2 Van (AWD) H3 High Roof              |                                 |                         |                             |                             |                           |                            |                          |                         |                                      |  |   |   |             |            |
| 2.2 TDCi 125/155 PS                        | 1313                            | 3500                    | 2187                        | 1750/1850                   | 1266                      | 2150                       | 921                      | 4.1                     | 5500                                 | 2800 (750)                                 | 255   | 24.6 (11.5)                                     | 32.5 (8.7)  | 29.1 (9.7) |



|  | Gross payload<br>(kg) <sup>®</sup> | Gross vehicle<br>mass (kg) | Kerb mass (kg) <sup>•</sup> | Front axle<br>plated mass (kg) | Front axle<br>kerb mass (kg) | Rear axle<br>plated mass (kg) | Rear axle<br>kerb mass (kg) | Axle ratio <sup>®</sup> | Max. GTM (kg)<br>with quoted<br>axle ratio | Max. trailer<br>weight braked<br>(unbraked) (kg) | CO <sub>2</sub> emissions<br>(g/km) <sup>®</sup> | Fuel consumption in mpg (L/100<br>km) <sup>®</sup> |             |            |
|--|------------------------------------|----------------------------|-----------------------------|--------------------------------|------------------------------|-------------------------------|-----------------------------|-------------------------|--|--|--|--|-------------|------------|
|  |                                    |                            |                             |                                |                              |                               |                             |                         |  |  |  | Urban  | Extra Urban | Combined   |
| 310 L3 Van (FWD) H2 Medium Roof                                    |                                    |                            |                             |                                |                              |                               |                             |                         |  |  |  |  |             |            |
| 2.2 TDCi 100 PS  | 1092                               | 3100                       | 2008                        | 1750                           | 1254                         | 1725                          | 754                         | 4.19                    | 4900                                       | 2600 (750)                                       | 200  | 33.2 (8.5)   | 40.4 (7.0)  | 37.2 (7.6) |
| 2.2 TDCi 100 PS (with Start-Stop)                                  | 1071                               | 3100                       | 2029                        | 1750                           | 1269                         | 1725                          | 760                         | 4.19                    | 4900                                       | 2600 (750)                                       | 193  | 36.2 (7.8)   | 40.4 (7.0)  | 38.7 (7.3) |
| 2.2 TDCi 125/155 PS  | 1092                               | 3100                       | 2008                        | 1750                           | 1254                         | 1725                          | 754                         | 4.19                    | 5100                                       | 2800 (750)                                       | 200  | 33.2 (8.5)   | 40.4 (7.0)  | 37.2 (7.6) |
| 2.2 TDCi 125/155 PS (with Start-Stop)                              | 1071                               | 3100                       | 2029                        | 1750                           | 1269                         | 1725                          | 760                         | 4.19                    | 5100                                       | 2800 (750)                                       | 193  | 36.2 (7.8)   | 40.4 (7.0)  | 38.7 (7.3) |
| 2.2 TDCi ECOnetic (with Start-Stop)                                | 1089                               | 3100                       | 2011                        | 1750                           | 1274                         | 1725                          | 737                         | 4.19                    | 3850                                       | 1550 (750)                                       | 179  | 38.2 (7.4)   | 42.8 (6.6)  | 40.9 (6.9) |
| 2.2 TDCi ECOnetic (with Start-Stop and fixed 62 mph Speed Limiter) | 1089                               | 3100                       | 2011                        | 1750                           | 1274                         | 1725                          | 737                         | 4.19                    | 3850                                       | 1550 (750)                                       | 171  | 38.2 (7.4)   | 47.1 (6.0)  | 43.5 (6.5) |
| 310 L3 Van (FWD) H3 High Roof                                      |                                    |                            |                             |                                |                              |                               |                             |                         |  |  |  |  |             |            |
| 2.2 TDCi 100 PS  | 1065                               | 3100                       | 2035                        | 1750                           | 1261                         | 1725                          | 774                         | 4.19                    | 4900                                       | 2600 (750)                                       | 200  | 33.2 (8.5)   | 40.4 (7.0)  | 37.2 (7.6) |
| 2.2 TDCi 100 PS (with Start-Stop)                                  | 1045                               | 3100                       | 2055                        | 1750                           | 1275                         | 1725                          | 780                         | 4.19                    | 4900                                       | 2600 (750)                                       | 193  | 36.2 (7.8)   | 40.4 (7.0)  | 38.7 (7.3) |
| 2.2 TDCi 125/155 PS  | 1065                               | 3100                       | 2035                        | 1750                           | 1261                         | 1725                          | 774                         | 4.19                    | 5100                                       | 2800 (750)                                       | 200  | 33.2 (8.5)   | 40.4 (7.0)  | 37.2 (7.6) |
| 2.2 TDCi 125/155 PS (with Start-Stop)                              | 1045                               | 3100                       | 2055                        | 1750                           | 1275                         | 1725                          | 780                         | 4.19                    | 5100                                       | 2800 (750)                                       | 193  | 36.2 (7.8)   | 40.4 (7.0)  | 38.7 (7.3) |
| 330 L3 Van (FWD) H2 Medium Roof                                    |                                    |                            |                             |                                |                              |                               |                             |                         |  |  |  |  |             |            |
| 2.2 TDCi 100 PS  | 1282                               | 3300                       | 2018                        | 1750                           | 1259                         | 2050                          | 759                         | 4.71                    | 4250                                       | 1950 (750)                                       | 201  | 32.5 (8.7)   | 40.9 (6.9)  | 36.2 (7.6) |
| 2.2 TDCi 100 PS (with Start-Stop)                                  | 1262                               | 3300                       | 2038                        | 1750                           | 1273                         | 2050                          | 765                         | 4.71                    | 4250                                       | 1950 (750)                                       | 194  | 35.8 (7.9)   | 40.9 (6.9)  | 38.7 (7.3) |
| 2.2 TDCi 125/155 PS  | 1282                               | 3300                       | 2018                        | 1750                           | 1259                         | 2050                          | 759                         | 4.71                    | 5325                                       | 2800 (750)                                       | 201  | 32.5 (8.7)   | 40.9 (6.9)  | 36.2 (7.6) |
| 2.2 TDCi 125/155 PS (with Start-Stop)                              | 1262                               | 3300                       | 2038                        | 1750                           | 1273                         | 2050                          | 765                         | 4.71                    | 5325                                       | 2800 (750)                                       | 194  | 35.8 (7.9)   | 40.9 (6.9)  | 38.7 (7.3) |
| 2.2 TDCi ECOnetic (with Start-Stop)                                | 1279                               | 3300                       | 2021                        | 1750                           | 1279                         | 2050                          | 742                         | 4.19                    | 4050                                       | 1750 (750)                                       | 179  | 38.2 (7.4)   | 42.8 (6.6)  | 40.9 (6.9) |
| 2.2 TDCi ECOnetic (with Start-Stop and fixed 62 mph Speed Limiter) | 1279                               | 3300                       | 2021                        | 1750                           | 1279                         | 2050                          | 742                         | 4.19                    | 4050                                       | 1750 (750)                                       | 171  | 38.2 (7.4)   | 47.1 (6.0)  | 43.5 (6.5) |
| 330 L3 Van (FWD) H3 High Roof                                      |                                    |                            |                             |                                |                              |                               |                             |                         |  |  |  |  |             |            |
| 2.2 TDCi 100 PS  | 1255                               | 3300                       | 2045                        | 1750                           | 1266                         | 2050                          | 779                         | 4.71                    | 4250                                       | 1950 (750)                                       | 201  | 32.5 (8.7)   | 40.9 (6.9)  | 36.2 (7.6) |
| 2.2 TDCi 100 PS (with Start-Stop)                                  | 1235                               | 3300                       | 2065                        | 1750                           | 1280                         | 2050                          | 785                         | 4.71                    | 4250                                       | 1950 (750)                                       | 194  | 35.8 (7.9)   | 40.9 (6.9)  | 38.7 (7.3) |
| 2.2 TDCi 125/155 PS  | 1255                               | 3300                       | 2045                        | 1750                           | 1266                         | 2050                          | 779                         | 4.71                    | 5325                                       | 2800 (750)                                       | 201  | 32.5 (8.7)   | 40.9 (6.9)  | 36.2 (7.6) |
| 2.2 TDCi 125/155 PS (with Start-Stop)                              | 1235                               | 3300                       | 2065                        | 1750                           | 1280                         | 2050                          | 785                         | 4.71                    | 5325                                       | 2800 (750)                                       | 194  | 35.8 (7.9)   | 40.9 (6.9)  | 38.7 (7.3) |
| 350 L3 Van (FWD) H2 Medium Roof                                    |                                    |                            |                             |                                |                              |                               |                             |                         |  |  |  |  |             |            |
| 2.2 TDCi 100 PS  | 1482                               | 3500                       | 2018                        | 1750                           | 1259                         | 2250                          | 759                         | 4.71                    | 4250                                       | 1950 (750)                                       | 201  | 32.5 (8.7)   | 40.9 (6.9)  | 36.2 (7.6) |
| 2.2 TDCi 100 PS (with Start-Stop)                                  | 1462                               | 3500                       | 2038                        | 1750                           | 1273                         | 2250                          | 765                         | 4.71                    | 4250                                       | 1950 (750)                                       | 194  | 35.8 (7.9)   | 40.9 (6.9)  | 38.7 (7.3) |
| 2.2 TDCi 125/155 PS  | 1482                               | 3500                       | 2018                        | 1750                           | 1259                         | 2250                          | 759                         | 4.71                    | 5325                                       | 2800 (750)                                       | 201  | 32.5 (8.7)   | 40.9 (6.9)  | 36.2 (7.6) |
| 2.2 TDCi 125/155 PS (with Start-Stop)                              | 1462                               | 3500                       | 2038                        | 1750                           | 1273                         | 2250                          | 765                         | 4.71                    | 5325                                       | 2800 (750)                                       | 194  | 35.8 (7.9)   | 40.9 (6.9)  | 38.7 (7.3) |
| 2.2 TDCi ECOnetic (with Start-Stop)                                | 1479                               | 3500                       | 2021                        | 1750                           | 1279                         | 2250                          | 742                         | 4.19                    | 4250                                       | 1950 (750)                                       | 179  | 38.2 (7.4)   | 42.8 (6.6)  | 40.9 (6.9) |
| 2.2 TDCi ECOnetic (with Start-Stop and fixed 62 mph Speed Limiter) | 1479                               | 3500                       | 2021                        | 1750                           | 1279                         | 2250                          | 742                         | 4.19                    | 4250                                       | 1950 (750)                                       | 171  | 38.2 (7.4)   | 47.1 (6.0)  | 43.5 (6.5) |
| 350 L3 Van (FWD) H3 High Roof                                      |                                    |                            |                             |                                |                              |                               |                             |                         |  |  |  |  |             |            |
| 2.2 TDCi 100 PS  | 1455                               | 3500                       | 2045                        | 1750                           | 1266                         | 2250                          | 779                         | 4.71                    | 4250                                       | 1950 (750)                                       | 201  | 32.5 (8.7)   | 40.9 (6.9)  | 36.2 (7.6) |
| 2.2 TDCi 100 PS (with Start-Stop)                                  | 1435                               | 3500                       | 2065                        | 1750                           | 1280                         | 2250                          | 785                         | 4.71                    | 4250                                       | 1950 (750)                                       | 194  | 35.8 (7.9)   | 40.9 (6.9)  | 38.7 (7.3) |
| 2.2 TDCi 125/155 PS  | 1455                               | 3500                       | 2045                        | 1750                           | 1266                         | 2250                          | 779                         | 4.71                    | 5325                                       | 2800 (750)                                       | 201  | 32.5 (8.7)   | 40.9 (6.9)  | 36.2 (7.6) |
| 2.2 TDCi 125/155 PS (with Start-Stop)                              | 1435                               | 3500                       | 2065                        | 1750                           | 1280                         | 2250                          | 785                         | 4.71                    | 5325                                       | 2800 (750)                                       | 194  | 35.8 (7.9)   | 40.9 (6.9)  | 38.7 (7.3) |
| 350 L3 Van (RWD) H2 Medium Roof                                    |                                    |                            |                             |                                |                              |                               |                             |                         |  |  |  |  |             |            |
| 2.2 TDCi 100 PS  | 1364                               | 3500                       | 2163                        | 1750/ 1850                     | 1265                         | 2250                          | 871                         | 3.31                    | 5000                                       | 2600 (750)                                       | 218  | 28.8 (9.8)   | 38.2 (7.4)  | 34.0 (8.3) |
| 2.2 TDCi 100 PS (with Start-Stop)                                  | 1357                               | 3500                       | 2143                        | 1750/ 1850                     | 1270                         | 2250                          | 873                         | 3.31                    | 5000                                       | 2600 (750)                                       | 210  | 31.7 (8.9)   | 38.2 (7.4)  | 35.3 (8.0) |
| 2.2 TDCi 100 PS  | 1364                               | 3500                       | 2163                        | 1750/ 1850                     | 1265                         | 2250                          | 871                         | 3.73                    | 5500                                       | 2800 (750)                                       | 234  | 26.4 (10.7)  | 36.2 (7.8)  | 31.7 (8.9) |
| 2.2 TDCi 100 PS (with Start-Stop)                                  | 1357                               | 3500                       | 2143                        | 1750/ 1850                     | 1270                         | 2250                          | 873                         | 3.73                    | 5500                                       | 2800 (750)                                       | 226  | 28.5 (9.9)   | 36.2 (7.8)  | 32.8 (8.6) |
| 2.2 TDCi 125/155 PS  | 1364                               | 3500                       | 2163                        | 1750/ 1850                     | 1265                         | 2250                          | 871                         | 3.15                    | 5500                                       | 2800 (750)                                       | 212  | 30.7 (9.2)   | 38.7 (7.3)  | 35.3 (8.0) |
| 2.2 TDCi 125/155 PS (with Start-Stop)                              | 1357                               | 3500                       | 2143                        | 1750/ 1850                     | 1270                         | 2250                          | 873                         | 3.15                    | 5500                                       | 2800 (750)                                       | 204  | 32.8 (8.6)   | 38.7 (7.3)  | 36.2 (7.8) |
| 2.2 TDCi 125/155 PS  | 1364                               | 3500                       | 2163                        | 1750/ 1850                     | 1265                         | 2250                          | 871                         | 3.55                    | 6000                                       | 2800 (750)                                       | 222  | 28.0 (10.1)  | 37.2 (7.6)  | 33.2 (8.5) |
| 2.2 TDCi 125/155 PS (with Start-Stop)                              | 1357                               | 3500                       | 2143                        | 1750/ 1850                     | 1270                         | 2250                          | 873                         | 3.55                    | 6000                                       | 2800 (750)                                       | 214  | 30.1 (9.4)   | 37.7 (7.5)  | 34.5 (8.2) |
| 2.2 TDCi HDT6 (with Start-Stop)                                    | 1312                               | 3500                       | 2188                        | 1750/1850                      | 1306                         | 2250                          | 882                         | 3.31                    | 5500                                       | 2800 (750)                                       | 215  | 30.4 (9.3)   | 37.7 (7.5)  | 34.5 (8.2) |
| 350 L3 Van (RWD) H3 High Roof                                      |                                    |                            |                             |                                |                              |                               |                             |                         |  |  |  |  |             |            |
| 2.2 TDCi 100 PS  | 1337                               | 3500                       | 2163                        | 1750/ 1850                     | 1272                         | 2250                          | 891                         | 3.31                    | 5000                                       | 2600 (750)                                       | 218  | 28.8 (9.8)   | 38.2 (7.4)  | 34.0 (8.3) |
| 2.2 TDCi 100 PS (with Start-Stop)                                  | 1330                               | 3500                       | 2143                        | 1750/ 1850                     | 1277                         | 2250                          | 893                         | 3.31                    | 5000                                       | 2600 (750)                                       | 210  | 31.7 (8.9)   | 38.2 (7.4)  | 35.3 (8.0) |
| 2.2 TDCi 100 PS  | 1337                               | 3500                       | 2163                        | 1750/ 1850                     | 1272                         | 2250                          | 891                         | 3.73                    | 5500                                       | 2800 (750)                                       | 234  | 26.4 (10.7)  | 36.2 (7.8)  | 31.7 (8.9) |
| 2.2 TDCi 100 PS (with Start-Stop)                                  | 1330                               | 3500                       | 2143                        | 1750/ 1850                     | 1277                         | 2250                          | 893                         | 3.73                    | 5500                                       | 2800 (750)                                       | 226  | 28.5 (9.9)   | 36.2 (7.8)  | 32.8 (8.6) |
| 2.2 TDCi 125/155 PS  | 1337                               | 3500                       | 2163                        | 1750/ 1850                     | 1272                         | 2250                          | 891                         | 3.15                    | 5500                                       | 2800 (750)                                       | 212  | 30.7 (9.2)   | 38.7 (7.3)  | 35.3 (8.0) |
| 2.2 TDCi 125/155 PS (with Start-Stop)                              | 1330                               | 3500                       | 2143                        | 1750/ 1850                     | 1277                         | 2250                          | 893                         | 3.15                    | 5500                                       | 2800 (750)                                       | 204  | 32.8 (8.6)   | 38.7 (7.3)  | 36.2 (7.8) |
| 2.2 TDCi 125/155 PS  | 1337                               | 3500                       | 2163                        | 1750/ 1850                     | 1272                         | 2250                          | 891                         | 3.55                    | 6000                                       | 2800 (750)                                       | 222  | 28.0 (10.1)  | 37.2 (7.6)  | 33.2 (8.5) |
| 2.2 TDCi 125/155 PS (with Start-Stop)                              | 1330                               | 3500                       | 2143                        | 1750/ 1850                     | 1277                         | 2250                          | 893                         | 3.55                    | 6000                                       | 2800 (750)                                       | 214  | 30.1 (9.4)   | 37.7 (7.5)  | 34.5 (8.2) |
| 2.2 TDCi HDT6 (with Start-Stop)                                    | 1285                               | 3500                       |                             | 1750/ 1850                     | 1313                         | 2250                          | 902                         | 3.31                    | 5500                                       | 2800 (750)                                       | 215  | 30.4 (9.3)   | 37.7 (7.5)  | 34.5 (8.2) |
| 350 L3 Van (AWD) H2 Medium Roof                                    |                                    |                            |                             |                                |                              |                               |                             |                         |  |  |  |  |             |            |
| 2.2 TDCi 125/155 PS  | 1283                               | 3500                       | 2217                        | 1850                           | 1335                         | 2250                          | 882                         | 4.1                     | 5500                                       | 2800 (750)                                       | 255  | 24.6 (11.5)  | 32.5 (8.7)  | 29.1 (9.7) |

Weights, loads and fuel

|                               | Gross payload<br>(kg) <sup>®</sup> | Gross vehicle<br>mass (kg) | Kerb mass (kg) <sup>•</sup> | Front axle<br>plated mass (kg) | Front axle<br>kerb mass (kg) | Rear axle<br>plated mass (kg) | Rear axle<br>kerb mass (kg) | Axle ratio <sup>®</sup> | Max. GTM (kg)<br>with quoted<br>axle ratio | Max. trailer<br>weight braked<br>(unbraked) (kg) | CO <sub>2</sub> emissions<br>(g/km) <sup>®</sup> | Fuel consumption in mpg (L/100<br>km) <sup>®</sup> |             |                       |
|-------------------------------|------------------------------------|----------------------------|-----------------------------|--------------------------------|------------------------------|-------------------------------|-----------------------------|-------------------------|--|--|--|--|-------------|-----------------------|
|                               |                                    |                            |                             |                                |                              |                               |                             |                         |  |  |  | Urban  | Extra Urban | Combined              |
| 350 L3 Van (AWD) H3 High Roof |                                    |                            |                             |                                |                              |                               |                             |                         |  |  |  |  |             |                       |
| 2.2 TDCi 125/155 PS           | 1256                               | 3500                       | 2244                        | 1850                           |                              | 1342                          | 2250                        | 902                     | 4.1  | 5500   | 2800 (750)                                       | 255  | 24.6 (11.5) | 32.5 (8.7) 29.1 (9.7) |

Extra long wheelbase

| Extra long wheelbase                   |                                 |                         |                             |                             |                           |                            |                          |                          |                                      |  | Fuel consumption in mpg (L/100 km) <sup>a</sup> |             |             |            |
|--|---------------------------------|-------------------------|-----------------------------|-----------------------------|---------------------------|----------------------------|--------------------------|--------------------------|--------------------------------------|--|---|-------------|-------------|------------|
|  | Gross payload (kg) <sup>o</sup> | Gross vehicle mass (kg) | Kerb mass (kg) <sup>•</sup> | Front axle plated mass (kg) | Front axle kerb mass (kg) | Rear axle plated mass (kg) | Rear axle kerb mass (kg) | Axle ratio <sup>oo</sup> | Max. GTM (kg) with quoted axle ratio | Max. trailer weight braked (unbraked) (kg) | CO <sub>2</sub> emissions (g/km) <sup>o</sup>   | Urban       | Extra Urban | Combined   |
| 350 L4 Van (RWD) H3                    |                                 |                         |                             |                             |                           |                            |                          |                          |                                      |  |   |             |             |            |
| 2.2 TDCi 100 PS                        | 1195                            | 3500                    | 2305                        | 1850                        | 1220                      | 2250                       | 1085                     | 3.31                     | 5000                                 | 2450 (750)                                 | 218   | 28.8 (9.8)  | 38.2 (7.4)  | 34.0 (8.3) |
| 2.2 TDCi 100 PS (with Start-Stop)      | 1189                            | 3500                    | 2311                        | 1850                        | 1224                      | 2250                       | 1087                     | 3.31                     | 5000                                 | 2450 (750)                                 | 210   | 31.7 (8.9)  | 38.2 (7.4)  | 35.3 (8.0) |
| 2.2 TDCi 100PS                         | 1195                            | 3500                    | 2305                        | 1850                        | 1220                      | 2250                       | 1085                     | 3.73                     | 5500                                 | 2800 (750)                                 | 234   | 26.4 (10.7) | 36.2 (7.8)  | 31.7 (8.9) |
| 2.2 TDCi 100 PS (with Start-Stop)      | 1189                            | 3500                    | 2311                        | 1850                        | 1224                      | 2250                       | 1087                     | 3.73                     | 5500                                 | 2800 (750)                                 | 226   | 28.5 (9.9)  | 36.2 (7.8)  | 32.8 (8.6) |
| 2.2 TDCi 125/155 PS                    | 1195                            | 3500                    | 2305                        | 1850                        | 1220                      | 2250                       | 1085                     | 3.15                     | 5500                                 | 2800 (750)                                 | 212   | 30.7 (9.2)  | 38.7 (7.3)  | 35.3 (8.0) |
| 2.2 TDCi 125/155 PS (with Start-Stop)  | 1189                            | 3500                    | 2311                        | 1850                        | 1224                      | 2250                       | 1087                     | 3.15                     | 5500                                 | 2800 (750)                                 | 204   | 32.8 (8.6)  | 38.7 (7.3)  | 36.2 (7.3) |
| 2.2 TDCi 125/155 PS                    | 1195                            | 3500                    | 2305                        | 1850                        | 1220                      | 2250                       | 1085                     | 3.55                     | 6000/6300                            | 2800 (750)                                 | 222   | 28.0 (10.1) | 37.2 (7.6)  | 33.2 (8.5) |
| 2.2 TDCi 125/155 PS (with Start-Stop)  | 1189                            | 3500                    | 2311                        | 1850                        | 1224                      | 2250                       | 1087                     | 3.55                     | 6000/6300                            | 2800 (750)                                 | 214   | 30.1 (9.4)  | 37.7 (7.5)  | 34.5 (8.2) |
| 350 L4 Van H3 Heavy Duty (DRW)         |                                 |                         |                             |                             |                           |                            |                          |                          |                                      |  |   |             |             |            |
| 2.2 TDCi 125/155 PS                    | 1130                            | 3500                    | 2370                        | 1850                        | 1218                      | 2450                       | 1152                     | 4.1                      | 6000/7000                            | 2800/3500 (750)                            | 244   | 25.2 (11.2) | 34.5 (8.2)  | 30.4 (9.3) |
| 2.2 TDCi 125/155 PS (with Start-Stop)  | 1123                            | 3500                    | 2377                        | 1850                        | 1223                      | 2450                       | 1154                     | 4.1                      | 6000/7000                            | 2800/3500 (750)                            | 236   | 27.2 (10.4) | 34.5 (8.2)  | 31.4 (9.0) |
| 350 L4 Van H3 (AWD)                    |                                 |                         |                             |                             |                           |                            |                          |                          |                                      |  |   |             |             |            |
| 2.2 TDCi 125 PS                        | 1115                            | 3500                    | 2385                        | 1850                        | 1289                      | 2250                       | 1096                     | 4.1                      | 5500                                 | 2800 (750)                                 | 255   | 24.6 (11.5) | 32.5 (8.7)  | 29.1 (9.7) |
| 430 L4 Van (RWD with DRW) H3           |                                 |                         |                             |                             |                           |                            |                          |                          |                                      |  |   |             |             |            |
| 2.2 TDCi HDT6 125 PS (with Start-Stop) | 1829                            | 4300                    | 2471                        | 1850                        | 1284                      | 3000                       | 1187                     | 3.31                     | 5500                                 | 2400 (750)                                 | 202   | 31.0 (9.1)  | 40.9 (6.9)  | 36.7 (7.7) |
| 470 L4 Van (RWD with DRW) H3           |                                 |                         |                             |                             |                           |                            |                          |                          |                                      |  |   |             |             |            |
| 2.2 TDCi 125/155 PS                    | 2281                            | 4700                    | 2419                        | 1850                        | 1243                      | 3300                       | 1176                     | 4.1                      | 6000/7000                            | 2300/2800 (750)                            | 244   | 25.2 (11.2) | 34.5 (8.2)  | 30.4 (9.3) |
| 2.2 TDCi 125/155 PS (with Start-Stop)  | 2274                            | 4700                    | 2426                        | 1850                        | 1248                      | 3300                       | 1178                     | 4.1                      | 6000/7000                            | 2300/2800 (750)                            | 236   | 27.2 (10.4) | 34.5 (8.2)  | 31.4 (9.0) |



Features

|  | ECOnetic | Base | Trend |
|--|----------|------|-------|
| Engine technology  |          |      |       |
| Auto-Start-Stop system (not available with AWD)  | ●        | ○    | ○     |
| Ford Eco Mode (driver information system)  | ●        | ●    | ●     |
| Acceleration Control   | ●        | ○    | ○     |
| cDPF (coated Diesel Particulate Filter)  | ●        | ●    | ●     |
| Brakes   |          |      |       |
| Dual-circuit, with self-adjusting servo-assistance and ABS. Front and rear discs   | ●        | ●    | ●     |
| Fuel tank  |          |      |       |
| Standard – 80 litres   | ●        | ●    | ●     |
| Long-range – 95/100 litres (FWD/RWD)   | –        | ○    | ○     |
| Ford Easy-Fuel capless refuelling system with misfuel inhibit  | ●        | ●    | ●     |
| Fuel filler – standard nozzle  | ○        | ○    | ○     |
| Steering   |          |      |       |
| Power-assisted steering  | ●        | ●    | ●     |
| Steering column – Rake- and reach-adjustable   | ●        | ●    | ●     |
| Suspension   |          |      |       |
| Front, independent MacPherson struts, variable rate coil springs, stabiliser bar and gas-pressurised shock absorbers. Rear, leaf springs and gas-pressurised shock absorbers | ●        | ●    | ●     |
| Engine governors   |          |      |       |
| Speed Limiter – 56 mph (legal requirement on vehicles over 3.5 GVM)  | ○        | ○    | ○     |
| Speed Limiter – 62 mph   | ○        | ○    | ○     |
| Speed Limiter – 70 mph   | ○        | ○    | ○     |
| Switchable Speed Limiter – 70 mph  | ●        | ○    | ○     |

● = Standard, ○ = Option, at extra cost.



Sidewall tie-downs

New Transit has DIN/ISO compliant tie-down points positioned just above the floor on the side wall of the load space. (Standard) This makes it easier to secure loads, while keeping the floor clear of obstructions, eliminating dirt traps and allowing the installation of the new Easy To Clean Load Floor. (Standard on Trend, option on other series)

Features

|  | ECOnetic | Base | Trend |
|--|----------|------|-------|
| Safety and driver assistance   |          |      |       |
| Anti-lock brakes – Electronic, 4-wheel <sup>1)</sup>   | ●        | ●    | ●     |
| Electronic Stability Control <sup>1)</sup>   | ●        | ●    | ●     |
| Curve Control <sup>1)</sup>  | ●        | ●    | ●     |
| Hill Start Assist (HSA) <sup>2)</sup>  | ●        | ●    | ●     |
| Load Adaptive Control (LAC) <sup>1)</sup>  | ●        | ●    | ●     |
| Emergency Brake Assist (EBA) <sup>1)</sup>   | ●        | ●    | ●     |
| Emergency Brake Warning <sup>2)</sup>  | ●        | ●    | ●     |
| Roll-Over Mitigation (ROM) <sup>1)</sup>   | ●        | ●    | ●     |
| Trailer Sway Control (TSC) <sup>1)</sup> (compatible with Ford tow attachments)  | ○        | ○    | ○     |
| Airbag – Driver's <sup>1)</sup>  | ●        | ●    | ●     |
| Airbag – Front passenger's* <sup>1)</sup> (includes passenger's airbag deactivation switch)  | ○        | ○    | ○     |
| Airbag – Front side airbags <sup>1)</sup>  | ○        | ○    | ○     |
| Airbag – Front side curtain airbags <sup>1)</sup>  | ○        | ○    | ○     |
| Seat belts – 3-point diagonal inertia reel (all seats) <sup>1)</sup>   | ●        | ●    | ●     |
| Tyre Pressure Monitoring <sup>1)</sup>   | ○        | ○    | ○     |
| Security   |          |      |       |
| Alarm – Perimeter  | ○        | ○    | ○     |
| Alarm – Thatcham Category 1 – Cab interior sensing, inclination sensor and trailer coupling, when fitted (includes remote locking with 2 key fobs) (only available with full steel bulkhead and unglazed rear doors) | ○        | ○    | ○     |
| Doors – Unglazed rear  | ●        | ●    | ●     |
| Immobiliser – Safeguard Passive Anti-Theft System (PATS) (Insurance-approved Category 2 immobiliser)   | ●        | ●    | ●     |
| Locks – Power door deadlocks, shielded with strengthened mountings   | ●        | ●    | ●     |
| Locks – Remote control central locking with one key fob  | ●        | ●    | –     |
| Locks – Remote control central locking with two key fobs   | –        | ○    | ●     |
| Locks – Manual fleet key   | ○        | ○    | –     |
| Locks – Configurable unlocking – 2-stage unlocking*  | ●        | ●    | ●     |
| Locks – Configurable unlocking – Independent driver's door unlocking*  | ○        | ○    | –     |
| Locks – Configurable unlocking – Courier unlocking with auto slam lock, zonal opposite door relocking and 3 second auto relocking*   | ○        | ○    | –     |
| Locks – Auto relocking, doors relock after 45 seconds if no door is opened   | ●        | ●    | ●     |
| Locks – Audio mis-lock feedback, audible signal if a door is ajar when locking activated   | ●        | ●    | ●     |
| Locks – Auto locking on drive-away, doors automatically lock at 5 mph  | ●        | ●    | ●     |
| Locks – Key-operated bonnet release  | ●        | ●    | ●     |
| Vehicle Identification Number – Visible  | ●        | ●    | ●     |

● = Standard, ○ = Option, at extra cost.

<sup>1)</sup>Safety feature, <sup>2)</sup>Driver assistance feature. \*For details of the configurations available please consult your Ford Dealer. Please note: Configurable locking must be defined at the time of order, it cannot be ordered as a Dealer-fitted option or accessory.  
**\*Note: A rear-facing child seat should never be placed in the front passenger seat when the Ford vehicle is equipped with an operational front passenger's airbag.**



Configurable unlocking

Transit's new locking system is more secure than ever. That's because you can open one individual door without automatically unlocking the others. The other doors stay securely locked until you activate a switch on the driver's door. (Option)



|  | ECOnetic | Base  | Trend |
|--|----------|-------|-------|
| Design features  |          |       |       |
| Body – H2 (Medium Roof; not available on L4)   | ●        | ●     | ●     |
| Body – H3 (High Roof; standard on L4)  | –        | ○ / ● | ○ / ● |
| Door mirrors – Blind spot eliminator and integrated side indicator   | ●        | ●     | ●     |
| Door mirrors – Manual adjust   | ●        | ●     | –     |
| Door mirrors – Electrically-operated and heated  | ○ / □    | ○ / □ | ●     |
| Door mirrors – Power-foldable, electrically-operated and heated  | ○        | ○     | ○     |
| Bodyside mouldings – Wide, self colour   | ●        | ●     | ●     |
| Front bumper – Partial body colour   | ●        | ●     | ●     |
| Rear bumper – Self colour with integrated step   | ●        | ●     | ●     |
| Door handles – Self colour   | ●        | ●     | ●     |
| Tailgate/cargo door handle – Self colour   | ●        | ●     | ●     |
| Front grille – Grey  | ●        | ●     | –     |
| Front grille – Titanium effect   | –        | –     | ●     |
| Mudflaps – Front   | ○        | ○     | ○     |
| Mudflaps – Rear  | ●        | ●     | ●     |
| Tow bar with Trailer Sway Control with 13-pin electrics (tachograph may be required)   | ○        | ○     | ○     |
| Paint – Metallic   | ○        | ○     | ○     |
| Wheels   |          |       |       |
| Steel – 15"x6½". (Fitted with 215/65 R15 BSW tyres; standard on 290 and 310 series only)   | –        | ●     | ●     |
| Steel – 16"x6½". (Fitted with 215/65 R16C tyres; standard on ECOnetic series; 350 series: 235/65 R16 BSW tyres; 430/470 series: 235/65 R16C 121/119 BSW tyres)   | ●        | ●     | ●     |
| Steel – 16"x6", dual rear wheels, hub caps on front wheels. (Fitted with 195/75 R16C BSW tyres; standard only on 430 and 470 series, and optional only on 350 L4 RWD series. Not available on AWD)   | –        | ○     | ○     |
| Alloy – 16"x6½", 5x2-spoke. (Fitted with 215/65 R16C BSW tyres; 290 and 310 series: 215/65 R16C BSW tyres; 330, 350 and 370 series: 235/65 R16C BSW 115/113 BSW tyres; 410 series: 235/65 R16C 121/119 BSW tyres; includes locking wheel nuts) | –        | –     | ○     |
| Wheel covers – Half caps   | –        | ●     | –     |
| Wheel covers – Full  | ●        | –     | ●     |
| Spare – Full-size steel with tool kit  | ○        | ●     | ●     |
| Tyre inflator kit  | ●        | ○     | ○     |



Headlights and front fog lights

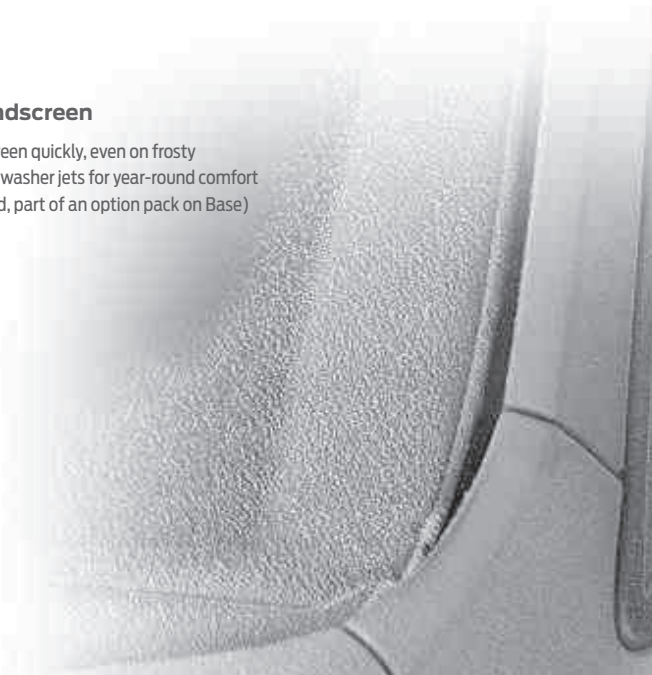
Trend series is equipped with projector-style signature headlights, featuring a chrome background and cornering light. Front fog lights further enhance Transit’s lighting performance.

|   | ECOnetic | Base | Trend |
|---|----------|------|-------|
| Convenience features  |          |      |       |
| Headlights – Projector-style halogen reflector lights with chrome background and blue highlight and static cornering lights   | ○        | ○    | ●     |
| Headlights – Day running lights   | ●        | ●    | ●     |
| Headlights – Courtesy delay, 30 seconds duration  | ●        | ●    | ●     |
| Front fog lights  | –        | ○    | ●     |
| Doors – Driver’s sliding side load door and step  | –        | ○    | ○     |
| Doors – Driver’s sliding side load door and power step (not available on FWD)   | –        | ○    | ○     |
| Doors – Passenger’s sliding side load door and step   | ●        | ●    | ●     |
| Doors – Unglazed hinged rear doors, 180° opening, positive stop at 90° (standard on L2 and L3, not available on L4)   | ●        | ●    | ●     |
| Doors – Unglazed hinged rear doors, 270° opening, with magnetic door retentioners (not available on L2, optional on L3 and standard on L4)  | –        | ○    | ○     |
| Doors – Hinged, with heated rear windows  | –        | ○    | ○     |
| Side and roof marker lights (DRW models only)   | –        | ●    | ●     |
| Wipers – Front, variable/intermittent with electric wash  | ●        | ●    | ●     |
| Wipers – Rear with auto reverse wipe and electric wash (only available with glazed rear doors)  | –        | ○    | ○     |
| Parking distance sensors – Front and rear (only available on Base with front fog lights)  | –        | ○    | ●     |
| Rear window ladder (only available with hinged rear doors)  | ○        | ○    | ○     |
| Option packs  |          |      |       |
| ECOPack – Auto-Start-Stop system; ‘ECO OFF’ switch on instrument panel, standard duty alternator, Acceleration Control and switchable Speed Limiter 70 mph (not available with AWD)                         | ●        | –    | –     |
| Visibility Pack (Low) – Heated windscreen, washer fluid sensor, and electrically-operated and heated door mirrors   | ○        | ○    | –     |
| Visibility Pack (High) – Heated windscreen, washer fluid sensor, electrically-operated and heated, power-foldable door mirrors, auto headlights, autowipers, front fog lights, and variable cluster dimming | –        | –    | ●     |
| Visibility Pack (Premium) – Rear-view camera, Lane Keeping Alert and high series instrument cluster   | –        | –    | ○     |

● = Standard, ○ = Option, at extra cost, □ = Part of an option pack, at extra cost. **L2** = MWB, **L3** = LWB, **L4** = ELWB.  
\*The wheel you choose will be fitted with the tyre size noted, but no choice of tyre brand is available.

Quickclear heated windscreen

Clears ice or demists the windscreen quickly, even on frosty mornings. Supplied with heated washer jets for year-round comfort and visibility. (Standard on Trend, part of an option pack on Base)





|   | ECOnetic | Base | Trend |
|---|----------|------|-------|
| Design features   |          |      |       |
| Floor covering – Cab, easy-clean rubber   | ●        | ●    | ●     |
| Headlining – Cab, moulded   | ●        | ●    | ●     |
| Steering wheel – 4-spoke, polyurethane  | ●        | ●    | –     |
| Steering wheel – 4-spoke, leather-trimmed   | ○        | ○    | ●     |
| Gearshift knob – Leather-trimmed  | –        | –    | ●     |
| Interior lighting   |          |      |       |
| Courtesy lights – Header-mounted, front with theatre dimming  | ●        | ●    | ●     |
| Courtesy lights – Header-mounted, front map lights  | –        | –    | ●     |
| Courtesy lights – Footwell illumination (side load door only)   | –        | –    | ●     |
| Loadspace compartment lights  | ●        | ●    | ●     |
| Loadspace compartment lights – LED  | ○        | ○    | ○     |
| Interior lighting/battery saver – 30 minutes  | ●        | ●    | ●     |
| Audio and communication systems   |          |      |       |
| Audio – Pre-equipment pack  | ○        | ○    | ○     |
| Radio with Bluetooth® Includes AUX connection for external music devices, Hands-Free Phone and Voice Control System with USB/iPod® connectivity port and iPod® functionality, remote audio controls, two front speakers <b>ICE Pack 2</b>   | ●        | ●    | –     |
| Radio with DAB and Bluetooth® Includes AUX connection for external music devices, Hands-Free Phone and Voice Control System with USB/iPod® connectivity port and iPod® functionality, remote audio controls, two front speakers <b>ICE Pack 3</b>   | ○        | ○    | –     |
| Radio/CD with Ford SYNC Includes 3.5" dot matrix display, extended integrated control panel, Ford SYNC – Includes Emergency Assistance*, Bluetooth® and Voice Control and audible text messaging, USB and Privacy Mode, AUX connection for external music devices, USB connectivity port with iPod® functionality, remote audio controls, four front speakers (two woofers and two tweeters) <b>ICE Pack 4</b>  | ○        | ○    | ●     |
| Radio/CD with DAB and Ford SYNC Includes 3.5" dot matrix display, extended integrated control panel, Ford SYNC – Includes Emergency Assistance*, Bluetooth® and Voice Control and audible text messaging, USB and Privacy Mode, AUX connection for external music devices, USB connectivity port with iPod® functionality, remote audio controls, four front speakers (two woofers and two tweeters) <b>ICE Pack 5</b>  | ○        | ○    | ○     |
| Radio/CD with Navigation, DAB and Ford SYNC Includes 5" TFT screen, extended integrated control panel, Ford SYNC – Includes Emergency Assistance*, Bluetooth® and Voice Control and audible text messaging, USB and Privacy Mode, AUX connection for external music devices (located in driver's fascia top stowage area), USB connectivity port with iPod® functionality, remote audio controls, four front speakers (two woofers and two tweeters; Available from summer 2014) <b>ICE Pack 11</b> | ○        | ○    | ○     |

Steering wheel-mounted controls

Allows you to operate the audio system and trip computer without taking your hands off the wheel. (Standard with Ford audio systems)



Lidded storage compartment with power point and USB port

Cleverly concealed storage compartment, located above the instrument cluster, features a 12-volt power supply, AUX input and USB port. (Standard)



|  | ECOnetic | Base  | Trend |
|--|----------|-------|-------|
| Instruments and controls   |          |       |       |
| Trip computer (distance to empty, instant and average fuel consumption, average speed, outside temperature)  | ●        | ●     | ●     |
| Water in fuel filter with sensor   | ●        | ●     | ●     |
| Battery – Cold start (-20°C)   | ●        | ●     | ●     |
| Single Battery (80Ah 700CCA; Standard on front wheel drive only)   | –        | ●     | ●     |
| Twin Battery (2 x 80Ah 700CCA; Standard on RWD and AWD. Optional on FWD)   | –        | ● / ○ | ● / ○ |
| Battery – Twin Improved Flooded IF, Cold start -29°C (75Ah, 700CCA; Standard with Start-Stop)  | ●        | □     | □     |
| Alternator – Standard duty (150 Amp)   | ●        | ●     | ●     |
| Alternator – Heavy duty (220 Amp)  | ○        | ○     | –     |
| Auxiliary Connection Point – 3 X 12V, 60A connections located under driver seat pedestal   | ●        | ●     | ●     |
| Tachograph – Digital, electronic, 24-hour  | –        | ○     | ○     |
| Cruise control (includes leather-trimmed steering wheel and Adjustable Speed Limiter)  | ○        | ○     | ●     |
| Adaptive Cruise Control with Forward Alert (includes leather-trimmed steering wheel, Adjustable Speed Limiter, and front and rear parking sensors) | –        | –     | ○     |
| Shift indicator light  | ●        | ●     | ●     |
| Seats  |          |       |       |
| Driver's seat – 8-way (fore/aft; recline; height; and tilt) with armrest   | ●        | ●     | –     |
| Driver's seat – 10-way (fore/aft; recline; height; tilt; and lumbar) with armrest  | ○        | ○     | ●     |
| Driver's seat – 10-way heated (fore/aft; recline; height; tilt; and lumbar) with armrest   | ○        | ○     | ○     |
| Front passenger's seat – Single, 8-way (fore/aft; height; tilt; and recline)   | ○        | ○     | ○     |
| Front passenger's seat – Single, 8-way heated (fore/aft; height; tilt; and recline)  | ○        | ○     | ○     |
| Front passenger's seat – Dual, heated, fixed back with lift-up seat cushion for stowage  | ○        | ○     | ○     |
| Front passenger's seat – Dual, fixed back with lift-up seat cushion for stowage, fold out table  | ●        | ●     | ●     |
| Front passenger's seat – Dual, heated, fixed back with lift-up seat cushion for stowage, fold out table  | ○        | ○     | ○     |

● = Standard, ○ = Option, at extra cost, □ = Part of an option pack, at extra cost.

\*Ford Emergency Assistance operates in over 30 European countries. This feature works when paired with a compatible connected mobile phone that is with you when an airbag is deployed (excludes knee airbags and rear inflatable safety belts, if equipped) or the fuel pump shut off switch is activated. See your local Ford website for latest information.  
The Bluetooth® word mark and logos are owned by the Bluetooth SIG, Inc. and any use of such marks by Ford Motor Company is under licence. Other trademarks and trade names are those of their respective owners.

Underseat stowage compartment

The front dual passenger seat cushions flip up to reveal a hidden compartment large enough to hold a toolbox. (Standard) The centre seat also incorporates a fold-down table, large enough to hold an A4 clipboard, tablet or a laptop computer. (Standard)





|   | ECOnetic | Base | Trend |
|---|----------|------|-------|
| Comfort and convenience   |          |      |       |
| Air conditioning – Front, filter-air pollen purifier  | ○        | ○    | ○     |
| Heater – Recirculation  | ●        | ●    | ●     |
| Assist handle – Located on B-pillar   | ●        | ●    | ●     |
| Bottle holder – Twin, 2-litre bottle capacity, facia-mounted  | ●        | ●    | ●     |
| Glovebox – With lid and A4 file storage capability  | ●        | ●    | ●     |
| Power point socket – 2 x 12V (located on instrument panel and in stowage bin)   | ●        | ●    | ●     |
| Power point – 150 Watt (230 volt/50 Hz) power converter (1500W maximum output)  | ○        | ○    | ○     |
| Power point socket – 12V (located in rear)  | ○        | ○    | ○     |
| Smokers' Pack – Cigar lighter and ash cups  | ○        | ○    | ○     |
| Storage – Front door map pockets  | ●        | ●    | ●     |
| Storage – Driver's side, storage compartment on facia top with lift up lid  | ●        | ●    | ●     |
| Storage – Underseat stowage compartment (under dual passenger seat)   | ●        | ●    | ●     |
| Storage – Overhead stowage shelf  | ●        | ●    | ●     |
| Windows – Electrically-operated front with one-touch on driver's side   | ●        | ●    | ●     |
| Rear-view camera in rear-view mirror (includes Trailer Hitch Assist)  | –        | ○    | ○     |
| Lane Keeping Alert (includes Driver Alert, high series instrument cluster, leather-trimmed steering wheel, autowipers, trip computer and heated windscreen) | ○        | ○    | ○     |



**Rear-view camera**

Select reverse and the image from the rear-view camera comes on automatically in the rear-view mirror. Marker lines overlaid on the camera image indicate where the vehicle is heading. (Option)

**Bottle holders**

Bottle holders are located on either side of the instrument panel, with cup holders above. In addition, the front door pockets are designed to accommodate a 2-litre drink bottle. (Standard)



|   | ECOnetic | Base | Trend |
|---|----------|------|-------|
| Load compartment  |          |      |       |
| Bulkhead – Delete (Vans only)                             | ○        | ○    | –     |
| Bulkhead – Full width steel, unglazed                     | ●        | ●    | ●     |
| Bulkhead – Full width steel with window                   | ○        | ○    | ○     |
| Complete rear trim half-height board                      | –        | ○    | ●     |
| Complete rear trim full-height board                      | –        | ○    | ○     |
| Easy Clean Load Floor                                     | –        | ○    | ●     |
| Phenolic Load Floor                                       | ○        | ○    | ○     |
| Load compartment – 8 x DIN 75410 compliant tie-down loops | ●        | ●    | ●     |
| Load retention pack                                       | ○        | ○    | ○     |
| Rear window protection grille                             | –        | ○    | ○     |
| Polytec interior roof rack (Van only)                     | ○        | ○    | ○     |

● = Standard, ○ = Option, at extra cost, □ = Part of an option pack, at extra cost.

**Braking system**

Whatever the working environment, Transit makes driver and passenger protection its top priority. Standard safety features include ABS with Emergency Brake Assist (EBA) to help reduce emergency stopping distances. Larger brake pads and discs last longer and are more resistant to brake fade, while wear sensors indicate when pads are due for replacement. For more challenging conditions, Transit is available with all-wheel drive (AWD). This latest system features an electronic pump that allows the AWD driveline to be locked from standstill, and incorporates a differential in the front axle for enhanced steering performance.





44

| Special Vehicle Options  |          |          |            |
|--|----------|----------|------------|
|  | SVO Code | ECONetic | Base/Trend |
| Body   |          |          |            |
| Omit passenger seat (Van only; no pedestal)  | A304     | ○        | ○          |
| Spare wheel access with rear doors closed  | A532     | –        | ○          |
| Electrical   |          |          |            |
| Engine RPM speed control, 1300-3000 rpm  | A003     | ○        | ○          |
| 2 high performance deep-cycle AGM batteries (2 x 95 Ah capacity, 850 CCA batteries under driver's seat)  | A736     | –        | ○          |
| Auxiliary fuse panel   | A526     | ○        | ○          |
| Beacon Preparation Pack – Switch and front and rear wiring (includes auxiliary fuse panel A526)  | A606     | ○        | ○          |
| Utility Vehicle Switch Pack (provides 3 switches for beacon and two power outputs; includes auxiliary fuse panel A526 and Beacon Preparation Pack A606)                                  | A607     | ○        | ○          |
| High specification interface connector (provides a range of hardwired signals and power; includes auxiliary fuse panel A526. Cannot be ordered with Utility Vehicle Switch Pack A607)    | A608     | ○        | ○          |
| Other  |          |          |            |
| Express Delivery Pack – Provides 9mm ply floor with waterproof and anti-skid covering, PP side lining, and medium and high position cargo rails (Van only)                               | E1       | –        | ○          |
| Paint  |          |          |            |
| Special paint, 130 solid colours available, consult Dealer for details*  | Various  | ○        | ○          |
| ○ = Option, at extra cost.<br>* SVO paint suffix must be entered at time of ordering. SVO paint pulls self-colour (black) bumpers, bodyside mouldings, mirror housings and door handles. |          |          |            |

## Colour and trim

Choose the body colour that you think best reflects your business brand.



**Frozen White**  
Solid body colour



**Race Red**  
Solid body colour



**Blazer Blue**  
Solid body colour



**Tectonic Silver**  
Metallic body colour\*



**Stratosphere**  
Metallic body colour\*



**Deep Impact Blue**  
Metallic body colour\*



**Midnight Sky**  
Metallic body colour\*



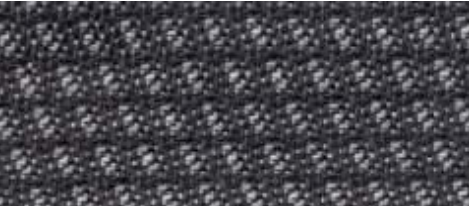
**Lunar Sky**  
Metallic body colour\*



**Moondust Silver**  
Metallic body colour\*

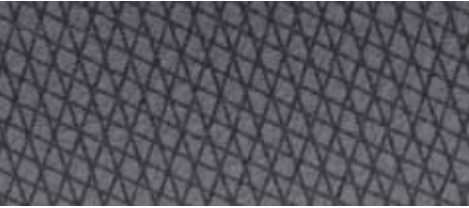


**Panther Black**  
Metallic body colour\*



**Base**

Max seat bolsters in Charcoal Black  
Traxon seat insert in Charcoal Black



**Base**

Prima Vinyl seat bolsters in Pewter\*\*  
Artec Vinyl seat insert in Pewter\*\*



**Trend**

Max seat bolsters in Charcoal Black  
Lane seat insert in Charcoal Black

**Special Vehicle Options (SVO)**

While the Ford Commercial Vehicle range already offers an extensive choice of off-the-shelf features and options, the Special Vehicle Options (SVO) programme goes a step further. Practical options range from high performance batteries to a choice of 130 colours to match your company's livery. For more information, please speak to your local Ford Transit Specialist Dealer.

\*Metallic body colours are options at extra cost.  
\*\*Option for Base.

The Ford Transit is covered by the Ford Corrosion Protection Warranty for 12 years from the date of first registration. Subject to terms and conditions.  
**Note** The vehicle images used are to illustrate body colours only and may not reflect current specification. Colours and trims reproduced within this brochure may vary from the actual colours, due to the limitations of the printing processes used.



### Commercial Vehicle Finance

At Ford, we can help you find the right vehicle to suit your needs, whether its for business or pleasure. Our wide range of competitive finance products can help you get on the road – quickly and easily.

**Ford Credit:** Provides a range of traditional finance products for customers who are interested in Commercial Vehicle ownership.

**Ford Lease:** Specialises in contract hire and leasing and provides an alternative range of finance products aimed at business customers (business users only).

Both are part of one of the world's biggest names in automotive finance, and can offer you affordable, flexible and innovative products.

#### Important Information:

Ford Credit: Finance subject to status. Guarantees may be required. Freepost Ford Credit.

Ford Lease: Ford Lease is provided by ALD Automotive Ltd, trading as Ford Lease, Oakwood Park, Lodge Causeway, Fishponds, Bristol, BS16 3JA. ALD Automotive is registered in England No. 987418. For the purposes of the Data Protection Act 1998 the data controllers in relation to any information you supply are Ford Motor Company Limited, FCE Bank Plc and ALD Automotive. Finance subject to status. Guarantees and indemnities may be required. ALD Automotive is authorised and regulated by the Financial Conduct Authority in respect of general insurance products. Ford Lease is a registered trademark of Ford Motor Company Limited.

### Services

There are 164 Sales and 219 Aftersales Ford Transit Specialist Dealers across the UK, equipped and trained to meet Commercial Vehicle customer requirements. From these, 101 Sales and 92 Aftersales Dealers have achieved the 'premium standard' as recognition of their total commitment to delivering dedicated and professional sales and service support.

To find the location of your nearest Ford Transit Specialist Dealer, simply call the Ford Information Service on 0845 7111 888, or visit the Ford Dealer locator at [www.fordvans.co.uk](http://www.fordvans.co.uk)

**Ford Protect** Every new Ford Fiesta Van is protected by a 3-year/ 60,000-mile Ford Protect Classic Warranty Plan, and also comes with a 1-year Ford Assistance package.

Ford Ranger is protected by a 3-year/60,000 mile Ford Protect Classic Warranty Plan.

Ford Transit, Transit/Tourneo Custom and Transit/Tourneo Connects are protected by a 3-year/100,000-mile bumper-to-bumper warranty.

Ford Transit Chassis Cab One-Stop bodywork is covered by a 3-year/ 100,000-mile warranty and a 3-year Perforation Warranty provided by the bodywork supplier.

**Ford Perforation Warranty** Ford Ranger, Transit, Transit/Tourneo Custom, Transit/Tourneo Connect and Fiesta Van are covered by the Ford Perforation Warranty for 12 years from the date of first registration. Subject to terms and conditions. Please see your Ford Transit Specialist Dealers for details.

**Ford Assistance** Ford Transit, Transit Custom, Transit Connect and Rangers are supplied with a minimum of a 1-year Ford Assistance roadside package. Further details are available either on [www.ford.co.uk](http://www.ford.co.uk) or from your local Ford Dealer.

**Ford Rapid Fit** Our 'no appointments necessary, while-you-wait' fast-fit service for exhausts, brakes, batteries and more, at over 240 sites nationally.

**Ford Accident Repair Centres** Approved Ford Accident Repair Centres meet rigorous Ford standards and are the best place to return your vehicle to its pre-accident condition.

### Contacts

**Ford Customer Relationship Centre** In the unlikely event that your Ford Dealer can't help you or if you need to speak to us directly, call 0845 841 1111 at local rates.

**Ford Rental** – local service nationwide Car and van rental from our latest model range. Contact your local Ford Dealer for more information.

**Talkback** – the company car drivers' club This is your club for extended test drives, special events, and advice on tax and buying issues. Join free, even if you don't drive a Ford, on [www.talkbackclub.com](http://www.talkbackclub.com) or call 0845 605 55 66.

**Ford Mobility** Our MAGIC care centre provides free information on all motoring and mobility issues, including special offers for HRDLA and Motability recipients. Call free on 0800 240 241.

\*Subject to terms and conditions.





MY 2014 GBR en

**Illustrations, descriptions and specifications.** This catalogue was correct at the time of going to print. However, Ford policy is one of continuous product development. The right is reserved to change specifications, colours and prices of the models and items illustrated and described in this publication at any time. For the latest details always consult your Ford Dealer. **Optional equipment.** Throughout this publication, wherever a feature is described as being an 'Option' or 'Option Fitment/Pack' etc, you should assume that it will be at extra cost to the base vehicle, unless specifically stated to the contrary. All models and colour combinations are subject to availability. **Note.** Some images portrayed are of a pre-production model and/or are computer generated, therefore, the design/features on the final version of the vehicle may differ in various respects. In addition, some of the features shown on the vehicles may be optional. **Note.** This brochure contains both original Ford accessories as well as a range of products from our suppliers. **+**The identified accessories are carefully selected third party supplier branded accessories which do not come with a Ford warranty but are instead covered by the third party supplier's own warranty, the details of which can be obtained from your Ford Dealer. **Note.** The Bluetooth® word mark and logos are owned by the Bluetooth SIG, Inc. and any use of such marks by Ford Motor Company is under licence. The iPod word mark and logos are the property of Apple Inc. Other trademarks and trade names are those of their respective owners. **Note.** Some driver assistance features and safety features described in this brochure are designed to function using sensors, whose performance may be affected under certain weather or environmental conditions.

**The Government fuel figures** do not express or imply any guarantee of the fuel consumption of any particular vehicle. The vehicles themselves have not been tested and there are inevitably differences between individual vehicles of the same model. In addition, a vehicle may incorporate particular modifications. Furthermore, the driver's style and road and traffic conditions, as well as the extent to which the vehicle has been driven and the standard of maintenance, will affect its fuel consumption. **Insurance groups** are only as recommended by the Association of British Insurers. You should always consult your insurance adviser for confirmation.



Ford and BP – working together to reduce fuel consumption and emissions.



Collect Nectar points at participating Ford Dealers and Authorised Repairers now. So take a look at the latest Ford Service Promotions by visiting the Owner Services section within [www.ford.co.uk](http://www.ford.co.uk).



#### Ford One Call

In the unlikely event that your Ford Dealer can't help you or if you need to speak to us directly, call 0203 564 4444.

#### Ford Rental - Local service nationwide

Car and van rental from our latest model range. Contact your local Ford Dealer for more information.

#### Ford Mobility

Our dedicated care centre provides free information on all motoring and mobility issues, including special offers for HRDLA and Motability recipients. Call free on 0845 604 0019

#### Finance

Ford Credit Customer Services 0845 712 5490  
Ford Lease Customer Services 0844 600 1405

Published by Ford Motor Company Limited,  
Brentwood, Essex, England.  
Registered in England No. 235446.

FA 1575  
BJN 202791. FoE H57E.  
PN 377511/1113/14m/GBR en  
November 2013.

© Ford Motor Company Limited.

[www.ford.co.uk](http://www.ford.co.uk)