

FORD FIESTA



Go Further



Visionary. Ingenious. Remarkable.  
Every car bears his signature.

*Henry Ford*



Unlock extra content online. If you use a smartphone or tablet, download the Fiesta Viewr app and point your device at any page with the phone icon.









Could this be  
the start of a  
long-lasting  
love affair?

With sparkling accents and high quality details, the Ford Fiesta is polished and poised. Look a little deeper and you discover every single component is engineered with one objective clearly in mind: quality that's built to last.





Use your voice like another pair of hands.

**Ford SYNC with AppLink\* and Emergency Assistance\*** lets you play music, make and receive hands-free calls, read out incoming text messages \*\* and even control apps on your smartphone. In the event of a collision Ford Emergency Assistance\* communicates with the Emergency services directly, providing coordinates of the incident and allowing occupant control at all times.



\*Compatible mobile phone required. You can browse a list of AppLink-compatible apps from [www.Ford.co.uk](http://www.Ford.co.uk), or via the **App Catalog** available in iOS and Android stores (coming soon). SYNC AppLink and Emergency Assistance are not supported by all European languages.  
\*\*With compatible mobile phones only.



A Sony car stereo unit is shown with various voice commands written around it. The stereo's screen displays 'Mobile Apps' with options for 'Spotify', 'Find new Apps', and 'App settings'. The time '12:34' is shown in the top right corner of the screen. The stereo has a large central knob and several buttons labeled 'CD', 'RADIO', 'AUX', 'PHONE', 'MENU', 'DISC', 'DSP', 'BLOCK', 'MUTE', and 'TA'. The Sony logo is visible above the central knob. The voice commands are: 'Call Dad', 'Shuffle', 'Read message', 'Call office', 'Play album Greatest Hits', 'Call Chris', 'Call home', 'List mobile apps', and 'What's playing?'.



## Indulge your love of style.

Enjoy high-quality partial or optional full leather seats, perfectly complemented by a leather-trimmed handbrake handle and gearshift knob in the Fiesta's beautifully crafted interior. A new premium flow through centre console with armrest, cup holder and chrome highlights – plus enhanced ambient lighting – complete your interior with finesse. (Standard on Titanium, Titanium X, ST-1, ST-2 & ST-3)





The steering system that always feels just right.

Ford Fiesta's sophisticated **electric power-assisted steering (EPAS)** is designed to achieve a balance that's just not possible with conventional power steering systems. At parking speeds, full power is delivered for feather-light manoeuvring. Once you're on the move, it steadily weights up to just the right extent for optimum feel and control. The height- and reach-adjustable steering wheel enables you to find your ideal driving position for a more relaxed driving experience. (Standard).





**ST**



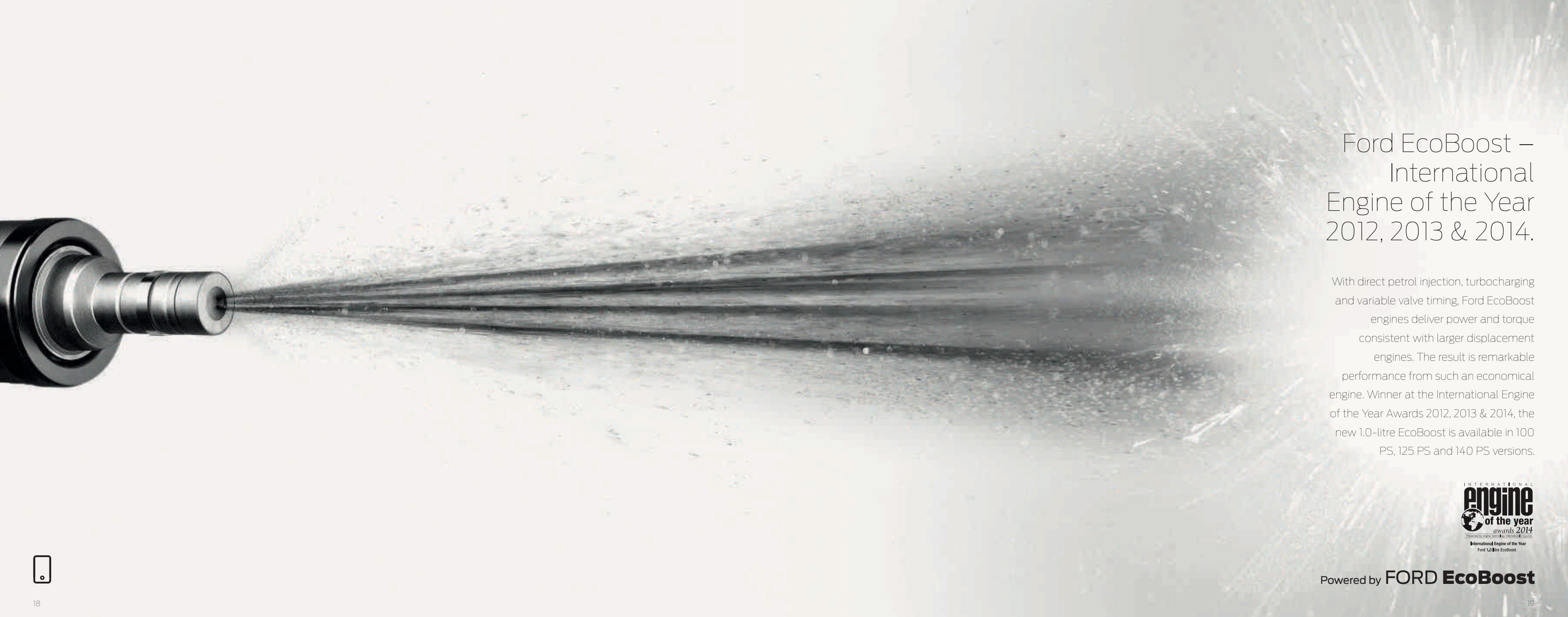
Enjoy the performance of a manual.



With the convenience of an automatic.

**Ford PowerShift** delivers the perfect combination between automatic convenience and manual efficiency. This 6-speed automatic transmission selects the next appropriate gear at precisely the right moment for smooth, lightning-fast gear changes, with no disruption to the flow of power. The manual mode lets you switch gears at the push of a button – no clutch pedal required.





## Ford EcoBoost – International Engine of the Year 2012, 2013 & 2014.

With direct petrol injection, turbocharging and variable valve timing, Ford EcoBoost engines deliver power and torque consistent with larger displacement engines. The result is remarkable performance from such an economical engine. Winner at the International Engine of the Year Awards 2012, 2013 & 2014, the new 1.0-litre EcoBoost is available in 100 PS, 125 PS and 140 PS versions.



Powered by **FORD EcoBoost**





Less fuel. More power.  
Lower emissions.

The new **1.0 EcoBoost 125 PS** petrol engine produces 30 percent more power than the larger capacity 1.4 96 PS engine available in the prior model Fiesta and yet can achieve around 32 percent better fuel economy on the combined test cycle and has 24 percent lower CO<sub>2</sub> emissions. The 1.6 Duratorq TDCI 95 PS diesel engine with auto start/stop is even more frugal, with CO<sub>2</sub> emissions of just 85 g/km\*. (Engine available across Style ECOnetic, Zetec ECOnetic & Titanium ECOnetic)

**85g/km CO<sub>2</sub>**

(\*See fuel, performance & emissions on page 66)




# The key that gives you peace of mind.

**Ford MyKey®** is an innovative programmable feature that encourages safer driving. MyKey® lets you tailor car settings to suit individual users. These settings include speed limit reminders and maximum audio volume. You can also prevent deactivation of driver assistance features where fitted. MyKey® settings are automatically activated each time MyKey® is used. (Standard on Style and above)





A close-up, low-angle shot of a car's headlight assembly. The headlight is illuminated, showing a bright white light from the projector and a series of smaller, rectangular LED lights along the bottom edge. The headlight is set into a blue car body with a sleek, aerodynamic design. The background is a solid blue color, matching the car's body.

Halogen projector headlights with  
LED day running lights.  
(Standard on Titanium, Titanium X,  
ST-2 & ST-3)



# See more in front and behind.

Fiesta's optional **built-in navigation system** eliminates the need for pre-route planning, by responding to real time road speed and traffic conditions to deliver more accurate estimated arrival times and trip information. Select reverse gear and the optional **rear-view camera** activates automatically in the central display, allowing you to see objects behind your car. (Rear-view camera is standard on Titanium X, optional on Titanium)





# Did someone say “fun”?

With a **182 PS 1.6 EcoBoost** turbocharged engine, exceptional handling and six-speed transmission, the sensational new **Fiesta ST** is born to lead. Its enhanced **Torque Vectoring Control** system is designed to put power on the road and help you maintain control. While the new **Electronic Stability Control system**, with three selectable settings, lets you choose precisely the amount of assistance you want the car to provide to match your driving style. For fast, safe, confidence-inspiring fun, nothing else comes close.

\*With time-limited overboost.



# ST

182 PS. 240 Nm (290 Nm\*).  
**0-62 mph 6.9 s.**





# Fiesta series



## Style

<b>Key exterior features</b> <ul style="list-style-type: none"><li>■ 15" 12-spoke wheel covers</li><li>■ Body colour power and heated door mirrors</li><li>■ Body colour door handles</li><li>■ Body colour rear spoiler</li><li>■ Chrome upper grille</li><li>■ Ford Easy-Fuel capless refuelling system</li><li>■ Headlight courtesy delay</li></ul>	<b>Bodystyles: 3- and 5-door</b>  <b>Engines:</b> <b>Petrol</b> 1.2 Duratec (60/82 PS)  <b>Diesel</b> 1.5 Duratorq (75 PS), 1.6 ECONetic (95 PS)
--	---

## Zetec

<b>Key exterior features additional to Style</b> <ul style="list-style-type: none"><li>■ 15" 5x2-spoke alloy wheels</li><li>■ Front fog lights with chrome surround</li><li>■ Quickclear heated windscreen</li><li>■ Chrome finish on upper door line</li></ul>	<b>Bodystyles: 3- and 5-door</b>  <b>Engines:</b> <b>Petrol</b> 1.0 (80 PS), 1.0 EcoBoost (100 PS), 1.25 / 1.6 Duratec (82 PS/105 PS),  <b>Diesel</b> 1.5 Duratorq (75 PS), 1.6 ECONetic (95 PS)
---	---

## Zetec S

<b>Key exterior features additional to Style</b> <ul style="list-style-type: none"><li>■ 16" 12-spoke alloy wheels</li><li>■ Full bodystyling kit</li><li>■ Front fog lights with sports bezel</li><li>■ Black upper and lower sports grille</li><li>■ Large body colour rear spoiler</li><li>■ Sports suspension</li><li>■ Quickclear heated windscreen</li></ul>	<b>Bodystyle: 3-door</b>  <b>Engines:</b> <b>Petrol</b> 1.0 EcoBoost (125 PS)  <b>Diesel</b> 1.6 Duratorq (95 PS)
--	--

## Titanium

<b>Key exterior features additional to Zetec</b> <ul style="list-style-type: none"><li>■ 16" 15-spoke alloy wheels</li><li>■ Power-foldable door mirrors with puddle lights</li><li>■ LED day running lights</li><li>■ Automatic headlights</li><li>■ Rain sensing wipers</li><li>■ Rear privacy glass</li></ul>	<b>Bodystyles: 3- and 5-door</b>  <b>Engines:</b> <b>Petrol</b> 1.0 (80 PS), 1.0 EcoBoost (100/125 PS), 1.6 Duratec (105 PS)  <b>Diesel</b> 1.5 Duratorq (75 PS), 1.6 ECONetic (95 PS)
--	---





Titanium X

Key exterior features additional to Titanium

- 16" 12-spoke alloy wheels
- Rear parking distance sensors
- Ford KeyFree System

Bodystyles: 3- and 5-door

Engines:

Petrol

1.0 EcoBoost (100/125 PS)

Diesel

1.6 Duratorq (95 PS)



ST-1

Key exterior features

- 17" ST alloy wheels
- ST full bodystyling kit and rear spoiler
- Chrome dual exhaust pipe
- Front and rear disc brakes
- ST suspension with 15-mm lowered ride height

ST-2

Key exterior features additional to ST-1

- Halogen projector headlights with LED day running lights
- Privacy glass

ST-3

Key exterior features additional to ST-2

- Ford KeyFree System
- Automatic headlights
- Rain sensing wipers
- Power-foldable door mirrors with puddle lights

Bodystyle: 3- door Engine: Petrol 1.6 EcoBoost (182 PS)







## Style

### Key interior features

- Manual air conditioning
- MyKey®
- Radio/CD with AUX input, USB connection and six speakers
- Electrically-operated front windows with 'one shot' up and down and anti-trap technology on driver and passenger side
- Remote central locking
- Manual driver's seat height adjustment
- Hill Start Assist
- Tyre Pressure Monitoring System

## Zetec

### Key interior features additional to Style

- Ford SYNC with Emergency Assistance
- 3-spoke leather-trimmed steering wheel
- Leather-trimmed handbrake handle
- Flow through centre console
- Trip computer
- Ambient lighting

## Zetec S

### Key interior features additional to Style

- Ford SYNC with Emergency Assistance
- Sports style front seats
- Sports pedals
- Perimeter alarm
- 3-spoke leather-trimmed steering wheel
- Leather-trimmed handbrake handle
- Centre console with armrest & illuminated cupholders
- Trip computer
- Ambient lighting

(Sports pedals design may vary from that shown)



# Titanium

## Key interior features additional to Zetec

- Sony DAB Digital Radio/CD with eight speakers
- Cruise control
- Electronic Automatic Temperature Control (EATC)
- Auto-dimming rear-view mirror
- Driver seat lumbar adjustment
- Centre console with armrest & illuminated cupholders
- Perimeter Alarm
- Front and rear floor mats







# Titanium X

## Key interior features additional to Titanium

- Partial leather heated seats
- Rear view camera
- Ford KeyFree System – Keyless entry with Ford Power Starter Button
- Electric rear windows (5 door only)
- Rear centre head restraint
- Front stainless steel scuff plates



# ST-1

## Key interior features

- DAB Digital Radio/CD with six speakers
- SYNC with Emergency Assistance
- Recaro cloth front seats
- MyKey®
- Leather-trimmed ST steering wheel and gearshift knob with red stitching
- Front and rear floor mats

# ST-2

## Standard features include

- Sony DAB Digital Radio/CD with eight speakers
- Recaro partial leather front seats
- Heated front seats
- Ford Power Starter Button

# ST-3

## Key interior features additional to ST-2

- Sony DAB Digital Radio/CD with Navigation system
- Electronic Automatic Temperature Control (EATC)
- Cruise Control
- Auto-dimming rear-view mirror

Image shown is ST-2

(Sports pedals design may vary from that shown)



**ST**



Find extra pleasure in the small details.

**Cruise Control**

With steering wheel-mounted controls for extra comfort and convenience (Standard on Titanium, Titanium X & ST-3)



**Electrically-operated and heated door mirrors with side indicators**

(Standard)



**Ford KeyFree System with Ford Power Starter Button**

Start the car and lock or unlock the doors without ever holding the key. Just keep the key fob with you in your pocket or bag. (Standard on Titanium X , ST-3 and an option on Zetec S, Titanium & ST-2)



**Ambient lighting**

A soft red glow discreetly highlights the interior of your Ford Fiesta. (Standard on Zetec, Titanium, Titanium X and all ST series) (Illuminated cupholders standard on Zetec S, Titanium, Titanium X & ST series)





**Frozen White**  
Solid body colour\*



**Race Red**  
Solid body colour



**Blazer Blue**  
Solid body colour



**Moondust Silver**  
Metallic body colour\*



**Hot Mustard**  
Metallic body colour\*



**Fashionista**  
Metallic body colour\*



**Midnight Sky**  
Metallic body colour\*



**Panther Black**  
Metallic body colour\*



**Copper Pulse**  
Metallic body colour\*



**Deep Impact Blue**  
Metallic body colour\*



**Spirit Blue**  
Metallic body colour\*



**Candy Blue**  
Special metallic body colour\*



**Hot Magenta**  
Special metallic body colour\*



**Molten Orange**  
Special metallic body colour\*

## More than just colour.

Ford Fiesta owes its beautiful and durable exterior to a special multi-stage painting process. From the wax-injected steel body sections to the water-based top coat, new materials and application processes ensure it's not only virtually solvent-free, but will retain its good looks for many years to come.

The Ford Fiesta is covered by the Ford Perforation Warranty for 12 years from the date of first registration. Subject to terms and conditions.

**Note** The car images used are to illustrate body colours only and may not reflect current specification or product availability in certain markets. Colours and trims reproduced within this brochure may vary from the actual colours, due to the limitations of printing processes used.

\*At extra cost.

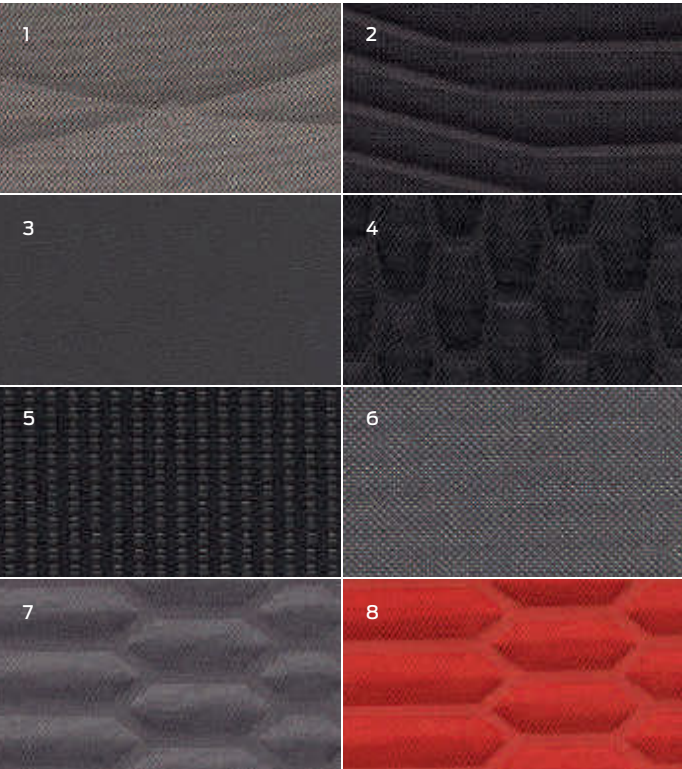


# A feel for comfort.

Right: Molten Orange with partial Torino leather in Charcoal Black (ST-2 & ST-3)

- 1. Match Point in Charcoal Black for Style
- 2. Lithos in Charcoal Black for Zetec/Titanium
- 3. Modena leather in Charcoal Black - Optional on Zetec S, Titanium & Titanium X
- 4. Ultimate/Lux soft in Charcoal Black for Zetec S
- 5. Partial Modena leather in Charcoal Black with Metal Grey stitching for Titanium X
- 6. Silverstone Grey with Charcoal Black seat fabric for ST-1
- 7. Smoke Storm with partial Torino leather in Charcoal Black for ST-2 & ST-3
- 8. Molten Orange with partial Torino leather in Charcoal Black for ST-2 & ST-3

For more trims, please refer to the specification table on page 70.







Wheels



14" 5x2-spoke alloy wheel  
(Standard on Zetec & Titanium ECONetic.  
Also available as an accessory)



15" 5x2-spoke alloy wheel  
(Standard on Zetec & available as an  
accessory)



16" 7x2-spoke alloy wheel  
(Option on Zetec & available as an  
accessory)



16" 12-spoke alloy wheel  
(Standard on Zetec S)

	Studio	Style	Zetec	Zetec S	Titanium	Titanium X	ST-1	ST-2	ST-3
Wheels									
Steel – 14"x5.5", 6-spoke wheel covers. (Fitted with 175/65 tyres)*	●	–	–	–	–	–	–	–	–
Steel – 14"x5.5", 12-spoke wheel covers. (Fitted with 175/65 tyres)* (Standard on Style with 1.6 Duratorq TDCi ECONetic with Auto-Start-Stop)	–	/E	–	–	–	–	–	–	–
Steel – 15"x6", 12-spoke wheel covers. (Fitted with 195/55 tyres)* (Not available on ECONetic with 1.6 Duratorq TDCi with Auto-Start-Stop)	–	●	–	–	–	–	–	–	–
	(See page 30)								
Alloy – 14"x5.5", 5x2-spoke. (Fitted with 175/65 tyres)* (Standard on Zetec and Titanium with 1.6 Duratorq TDCi ECONetic with Auto-Start-Stop)	–	–	/E	–	/E	–	–	–	–
	(See above)								
Alloy – 15"x6", 5x2-spoke. (Fitted with 195/55 tyres)* (Not available on ECONetic with 1.6 Duratorq TDCi with Auto-Start-Stop)	(See above)	–	●	–	–	–	–	–	–
Alloy – 16"x6.5", 7x2-spoke. (Fitted with 195/50 tyres)* (Not available on ECONetic with 1.6 Duratorq TDCi with Auto-Start-Stop)	(See above)	–	○	–	–	–	–	–	–
Alloy – 16"x6.5", 12-spoke. (Fitted with 195/50 tyres)*	(See above)	–	–	●	–	–	–	–	–
Alloy – 16"x6.5", 15-spoke. (Fitted with 195/50 tyres)* (Not available on ECONetic with 1.6 Duratorq TDCi with Auto-Start-Stop)	(See page 31)	–	–	–	●	–	–	–	–
Alloy – 16"x6.5", 12-spoke. (Fitted with 195/50 tyres)*	(See page 32)	–	–	–	–	●	–	–	–
Alloy – 17"x7", 8-spoke. (Fitted with 205/40 tyres)* (Not available with Powershift Transmission & ECONetic with 1.6 Duratorq TDCi with Auto-Start-Stop)	(See page 3)	–	–	○	○	○	–	–	–
Alloy – 17"x7 5-spoke. (Fitted with 205/40 tyres)*	(See page 33)	–	–	–	–	–	●	●	●
Alloy – 17"x7 5-spoke metallic grey (Available as part of ST Style Pack) (Fitted with 205/40 tyres)*	(See page 29)						□	□	□
Tyre mobility kit (Not available with spare wheel)	●	●	●	●	●	●	●	●	●
Spare – 14"x5.5" steel (not available with detachable tow bar) (Standard with 1.6 Duratorq TDCi ECONetic with Auto-Start-Stop)	○	○/E	○/E	○	○/E	○	–	–	–
ST Spare Wheel – 15" x 4"	–	–	–	–	–	–	○	○	○
Locking wheel nuts (only with alloy wheels)	–	–	●	●	●	●	●	●	●

● = Standard, ○ = Option, at extra cost, □ = Part of an option pack, at extra cost, /\* = Not available with City Pack or Full Bodystyling Kit /# = Not available with front parking sensors, /E = Standard with ECONetic models  
\*The wheel you choose will be fitted with the tyre size noted, but no choice of tyre brand is available.



**Obsessively driven**

During its development, we test drove the Ford Fiesta the equivalent of 87 times around the globe. It's a car you can rely on, right down to the smallest ball bearing.





Quickclear heated windscreen

Halogen projector lights with LED day running lights

Chrome front grille surround

Front fog lights with chrome surround

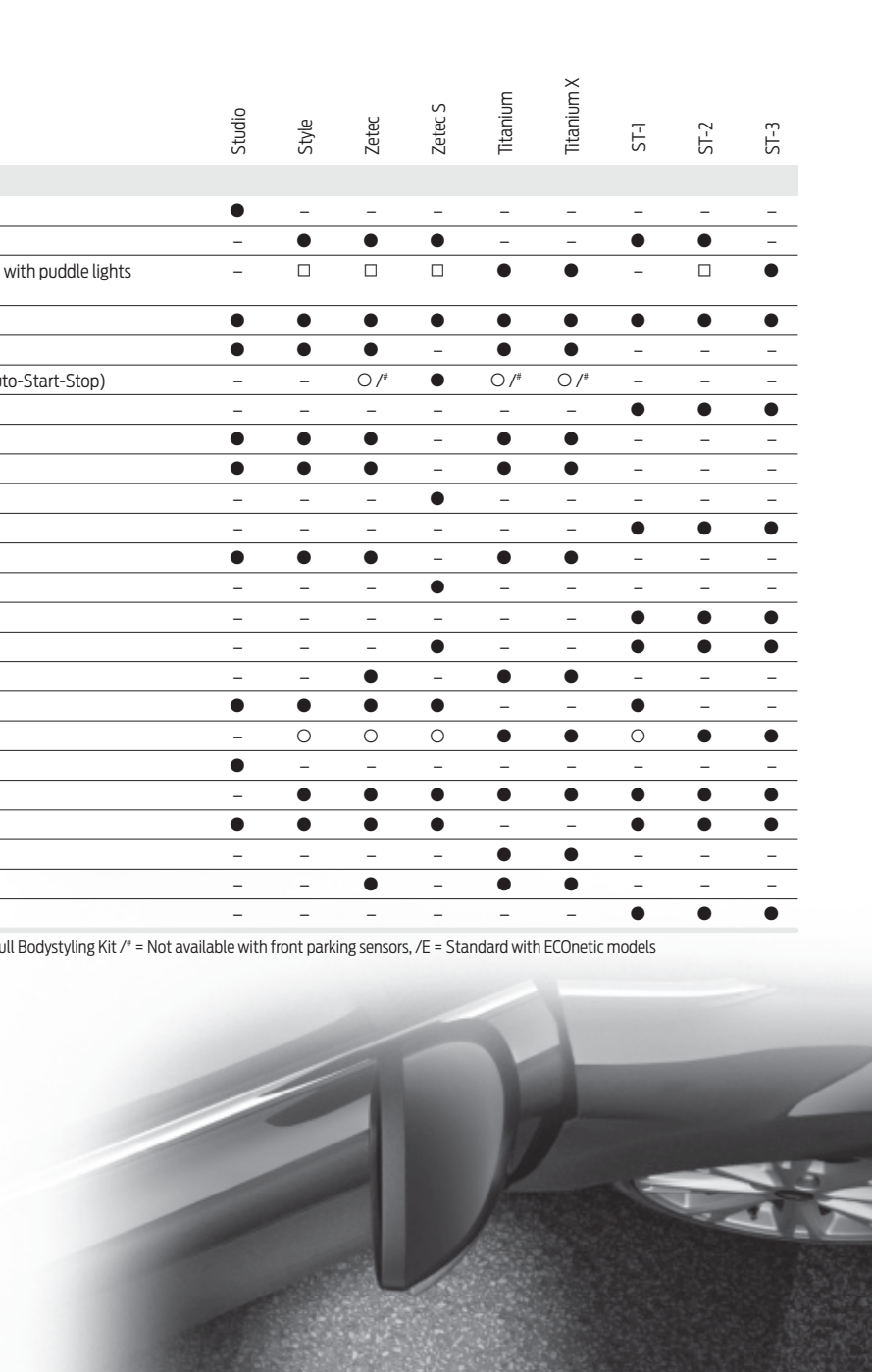
Exterior features

	Studio	Style	Zetec	Zetec S	Titanium	Titanium X	ST-1	ST-2	ST-3
Exterior Design features									
Door mirrors – Electrically-operated and heated, integrated side indicators, black housings	●	–	–	–	–	–	–	–	–
Door mirrors – Electrically-operated and heated, integrated side indicators, body colour housings	–	●	●	●	–	–	●	●	–
Door mirrors – Electrically-operated and heated, power-foldable, integrated side indicators, body colour housings with puddle lights (see Option Packs)	–	□	□	□	●	●	–	□	●
Bumpers – Front and rear, body colour	●	●	●	●	●	●	●	●	●
Rear spoiler – Body colour	●	●	●	–	●	●	–	–	–
Full Bodystyling Kit with large rear spoiler (3 door or 5 door, not available with 1.6 Duratorq TDCi ECONetic with Auto-Start-Stop)	–	–	○ /*	●	○ /*	○ /*	–	–	–
ST Full Bodystyling Kit with large rear spoiler	–	–	–	–	–	–	●	●	●
Front upper grille – Chrome finish surround	●	●	●	–	●	●	–	–	–
Front upper grille insert – Chrome bars	●	●	●	–	●	●	–	–	–
Front upper grille insert – Black mesh	–	–	–	●	–	–	–	–	–
ST Front upper grille insert – High Gloss Black Mesh	–	–	–	–	–	–	●	●	●
Front lower grille insert – Black	●	●	●	–	●	●	–	–	–
Front lower grille insert – Black Mesh	–	–	–	●	–	–	–	–	–
ST Front lower grille – Black	–	–	–	–	–	–	●	●	●
Front fog lights – Black bezel rings	–	–	–	●	–	–	●	●	●
Front fog lights – Chrome finish bezel rings	–	–	●	–	●	●	–	–	–
Tinted glass	●	●	●	●	–	–	●	–	–
Rear privacy glass	–	○	○	○	●	●	○	●	●
Door handles – Black colour	●	–	–	–	–	–	–	–	–
Door handles – Body colour	–	●	●	●	●	●	●	●	●
Tailgate handle – Body colour	●	●	●	●	–	–	●	●	●
Tailgate handle – Body colour with chrome finisher	–	–	–	–	●	●	–	–	–
Chrome finish on upper door line	–	–	●	–	●	●	–	–	–
Chrome tipped dual exhaust pipe	–	–	–	–	–	–	●	●	●

● = Standard, ○ = Option, at extra cost, □ = Part of an option pack, at extra cost, /\* = Not available with City Pack or Full Bodystyling Kit /\* = Not available with front parking sensors, /E = Standard with ECONetic models  
\*The wheel you choose will be fitted with the tyre size noted, but no choice of tyre brand is available.

Puddle Lights

Illuminate the ground by your vehicle when you unlock your car door to highlight any puddles that you may inadvertently step into. (Standard on Titanium ,Titanium X & ST-3).





Exterior features

	Studio	Style	Zetec	Zetec S	Titanium	Titanium X	ST-1	ST-2	ST-3
Exterior convenience features									
Ford Easy-Fuel capless refuelling system with misfuel inhibit	●	●	●	●	●	●	●	●	●
Front parking distance sensors			□		□	○/*			
Rear parking distance sensors	-	□	□	□	□	●	-	○	○
Headlights – Automatic headlights (includes autowipers & auto-dimming rear-view mirror)	-	-	-	○	●	●	-	○	●
Headlights – Twin chamber halogen reflector with Black bezel and day running lights	●	●	-	-	-	-	-	-	-
Headlights – Halogen projector with Silver bezel and day running lights	-	-	●	●	-	-	●	-	-
Headlights – Halogen projector with Silver bezel and LED day running lights	-	-	-	-	●	●	-	●	●
Headlights – Courtesy delay	●	●	●	●	●	●	●	●	●
Tailgate wash/wipe	●	●	●	●	●	●	●	●	●
Wipers – Front, variable intermittent	●	●	●	●	-	-	●	●	-
Wipers – Front, automatic with rain sensor (includes automatic headlights and auto-dimming rear-view mirror)	-	-	-	○	●	●	-	○	●
Quickclear heated windscreen	-	○	●	●	●	●	●	●	●
High-mounted rear brake light	●	●	●	●	●	●	●	●	●



Clever features that save time and hassle

Capless refuelling with Ford Easy Fuel

No dirty fuel caps to touch. Plus Ford Easy Fuel with its unique safeguard ensures nobody accidentally fills up with the wrong fuel. (Standard)

Option packs

	Studio	Style	Zetec	Zetec S	Titanium	Titanium X	ST-1	ST-2	ST-3
Option packs									
City Pack – Rear parking distance sensors and electric/heated power-foldable door mirrors with puddle lights	-	○	○	○	○	●	-	-	-
Front and Rear Parking Pack – Front and rear parking distance sensor and electric/heated power-foldable door mirrors with puddle lights	-	-	○/*	-	○/*	-	-	-	-
Convenience Pack - Keyless Entry, Ford Power Starter Button and power-foldable door mirrors with puddle lights	-	-	-	○	○	●	-	-	-
ST Convenience Pack – Keyless Entry and power-foldable mirrors with puddle lights	-	-	-	-	-	-	-	○	●
ST Style Pack – 17" metallic grey alloy wheels, illuminated scuff plates and red brake callipers	-	-	-	-	-	-	○	○	○

● = Standard, ○ = Option, at extra cost, □ = Part of an option pack, at extra cost, /\* = Not available with City Pack or Full Bodystyling Kit /\* = Not available with front parking sensors, /E = Standard with ECOnetic models

Choices that make a statement

Full Bodystyling Kit

Make a statement with this styling kit, perfectly designed to complement your Ford Fiesta and make it stand out from the crowd. (Option on Zetec,Titanium & Titanium X) (Standard on Zetec S). Components also available separately as accessories. Kit includes:

- Front, rear and side skirts in body colour
- Rear spoiler in body colour
- Black rear bumper diffuser







Interior features

	Studio	Style	Zetec	Zetec S	Titanium	Titanium X	ST-1	ST-2	ST-3
Interior Design Features									
Door lever – Chrome finish	-	●	●	●	●	●	●	●	●
Floor mats – Front and rear, velour	-	-	-	-	●	●	-	-	-
Floor mats – Front and rear, carpet with double stitching	-	-	-	-	-	-	●	●	●
Gearshift knob – Soft-feel	●	-	-	-	-	-	-	-	-
Gearshift knob with chrome finish bezel	-	●	-	-	-	-	-	-	-
Gearshift knob – Leather-trimmed with chrome finish bezel	-	-	●	●	●	●	-	-	-
Gearshift knob – Unique ST design, leather-trimmed	-	-	-	-	-	-	●	●	●
Headliner – Moulded	●	●	-	-	-	-	-	-	-
Headliner – Woven	-	-	●	●	●	●	-	-	-
Headliner – Woven (Dark)	-	-	-	-	-	-	●	●	●
Leather-trimmed handbrake	-	-	●	●	●	●	●	●	●
Sports pedals	-	-	-	●	-	-	●	●	●
Scuff plates – Front, stainless steel	-	-	-	-	-	●	-	-	-
Scuff plates – Front, stainless steel with ST logo	-	-	-	-	-	-	●	●	●
Steering wheel – 3-spoke	●	●	-	-	-	-	-	-	-
Steering wheel – 3-spoke, leather-trimmed	-	-	●	●	●	●	-	-	-
Steering wheel – 3-spoke, leather-trimmed with ST logo	-	-	-	-	-	-	●	●	●

● = Standard, ○ = Option, at extra cost, □ = Part of an option pack, at extra cost, /E = Standard with ECONetic Engines

Spend your driving time surrounded in luxury

Stainless steel Scuff Plates

Elegant front door stainless steel scuff plates add a premium feel as well as protecting your paintwork. (Standard on Titanium X and available as an accessory)



## Connect with your world

A choice of superb audio, navigation and entertainment systems, with built-in connectivity for your gadgets, lets you fill your Fiesta with your favourite music and connect to the outside world.



### Remote audio controls

Your hands on the wheel and your MP3 on the right track. (Remote audio controls shown on left are standard)

### Shown right: Sony DAB digital radio/CD with 4.2" TFT colour multi-functional display

DAB technology, MP3-compatible CD player with eight speakers (four front and four rear coaxial), remote audio controls, AUX and USB connection for external music devices and Ford SYNC including Ford Emergency Assistance, featuring hands-free Bluetooth® -enabled Voice Control System and audio streaming. (Standard on Titanium, Titanium X, ST-2 & ST-3)

Rear-view camera is a separate option that can be ordered in combination with Sony audio and navigation systems. (Standard on Titanium X and optional on Titanium)

### USB connection

Built-in connectivity lets you listen to, and operate, your digital music player via the car's Ford audio system.

**Note** The Bluetooth® word mark and logos are owned by the Bluetooth SIG, Inc. and any use of such marks by Ford Motor Company Limited and its associated companies is under licence. Other trademarks and trade names are those of their respective owners.







Interior features

	Studio	Style	Zetec	Zetec S	Titanium	Titanium X	ST-1	ST-2	ST-3
Audio and communication systems									
Radio/CD with multi-functional 2-line display, six speakers (four front and two rear), MP3-compatible, remote audio controls, AUX and USB connection for external music devices	●	●	–	–	–	–	–	–	–
Radio/CD with multi-functional matrix display, six speakers (four front and two rear), MP3-compatible, remote audio controls. <b>Ford SYNC</b> – Includes Emergency Assistance*, Bluetooth® hands-free phone and Voice Control, USB, AUX and USB connection for external music devices, diversity antenna	–	○	●	●	–	–	–	–	–
Radio/CD with DAB with multi-functional matrix display, six speakers (four front and two rear), MP3-compatible, remote audio controls. <b>Ford SYNC</b> – Includes Emergency Assistance*, Bluetooth® hands-free phone and Voice Control, USB, AUX and USB connection for external music devices, diversity antenna	–	○	○	○	–	–	●	–	–
Radio/CD/SD-navigation system with DAB, 5" TFT display , MP3-compatible, six speakers (four front and two rear), remote audio controls, <b>Ford SYNC</b> – Includes Emergency Assistance*, Bluetooth® hands-free phone and Voice Control, USB, AUX and USB connection for external music devices, diversity antenna	–	○	○	○	–	–	○	–	–
Sony radio/CD with DAB, 4.2" TFT display , MP3-compatible, eight speakers (four front and four rear), remote audio controls, <b>Ford SYNC</b> – Includes Emergency Assistance*, Bluetooth® hands-free phone and Voice Control, USB, AUX and USB connection for external music devices, diversity antenna	–	–	–	–	●	●	–	●	–
Sony radio/CD/SD-navigation system with DAB, 5" TFT display MP3-compatible, eight speakers (four front and four rear), remote audio controls, <b>Ford SYNC</b> – Includes Emergency Assistance*, Bluetooth® hands-free phone and Voice Control, USB, AUX and USB connection for external music devices, diversity antenna	–	–	–	–	○	○	–	○	●
Climate control									
Air conditioning – Manual control	–	●	●	●	–	–	●	●	–
Air conditioning – Electronic Automatic Temperature Control (EATC)	–	–	–	○	●	●	–	○	●
Pollen filter	●	●	●	●	●	●	●	●	●
Interior Comfort and Convenience									
Accessory power point (12 V) – Front	●	●	●	●	●	●	●	●	●
Centre console – With trinket tray, two cup holders	●	●	●	–	–	–	–	–	–
Centre console – With trinket tray, two cupholders with chrome accent ring, front centre armrest	–	–	–	●	●	●	●	●	●
Ambient Lighting	–	–	●	–	●	●	●	●	●
Footwell lights – Driver and passenger	–	–	●	●	●	●	●	●	●
Courtesy light – Overhead with theatre-style dimming	●	●	●	●	●	●	●	●	●
Courtesy light – Front with front map-reading lights	–	–	●	●	●	●	●	●	●
Courtesy light – Rear	●	●	●	●	●	●	●	●	●
Glovebox – With illumination	●	●	●	●	●	●	●	●	●
Cruise control	–	–	–	○	●	●	–	○	●
MyKey® – See Page 22	–	●	●	●	●	●	●	●	●
Rear-view camera (requires Sony radio/CD or navigation)	–	–	–	–	○	●	–	–	–
Rear-view mirror – Auto-dimming (only available with automatic rain-sensing wipers)	–	–	–	□	●	●	–	□	●
Trip computer	–	○/E	●	●	●	●	●	●	●
Windows – Electrically-operated front with one-touch lowering/closing on driver's and passenger's side	●	●	●	●	●	●	●	●	●
Windows – Electrically-operated front and rear, global opening/closing (5-door only)	–	–	○	–	○	●	–	–	–

● = Standard, ○ = Option, at extra cost, □ = Part of an option pack, at extra cost, /E = Standard with EConetic Engines  
The Bluetooth® word mark and logos are owned by the Bluetooth SIG, Inc. and any use of such marks by Ford Motor Company and its associated companies is under licence. Other trademarks and trade names are those of their respective owners.  
\*Ford Emergency Assistance operates in over 30 European countries. This feature works when paired with a compatible connected mobile phone that is with you when an airbag is deployed (excludes knee airbags and rear inflatable safety belts, if equipped) or the fuel pump shut off switch is activated. See your local Ford website for latest information. SYNC AppLink is available from Summer 2014 production.



Interior features

	Studio	Style	Zetec	Zetec S	Titanium	Titanium X	ST-1	ST-2	ST-3
Seats									
Front seats – Comfort-style	●	●	●	–	●	–	–	–	–
Front seats – Sports-style	–	–	–	●	–	–	–	–	–
Front seats – Sports-style (Partial leather seats)	–	–	–	–	–	●	–	–	–
Front seats – Recaro (Fabric)	–	–	–	–	–	–	●	–	–
Front seats – Recaro (Partial Leather)	–	–	–	–	–	–	–	●	●
Front seats – 2-way adjust head restraints	●	●	●	●	●	●	●	●	●
Front seats – Heated	–	–	○	○/□	○/□	●	–	●	●
Front seat – Driver's lumbar support adjustment	–	–	○	●	●	●	–	–	–
Front seat – Driver's manual fore/aft adjustment	●	–	–	–	–	–	–	–	–
Front seat – Driver's manual height and fore/aft adjustment	–	●	●	●	●	●	●	●	●
Front seat – Passenger's manual fore/aft adjustment	●	●	●	●	●	●	–	–	–
Front seat – Passenger's manual height and fore/aft adjustment	–	–	–	–	–	–	●	●	●
Rear seat – 60/40 split folding back and fixed cushion	●	●	●	●	●	●	●	●	●
Rear seat – Centre head restraint	–	○	○	○/□	○/□	●	○	○	○
Rear seats back – Carpet	●	●	●	●	●	●	●	●	●
Front seat map pockets (driver and passenger)	–	●	●	●	●	●	●	●	●
Leather Trim Pack – Leather trim, heated front sport seats, driver's seat lumbar support, centre rear head restraint	–	–	–	□	□	□	–	–	–
Loadspace									
Loadspace floor carpet	●	●	●	●	●	●	●	●	●
Loadspace compartment light	●	●	●	●	●	●	●	●	●
First aid kit strap and warning triangle storage	●	●	●	●	●	●	●	●	●
Removable package tray	●	●	●	●	●	●	●	●	●
Adjustable load floor in luggage compartment (eliminates first aid kit strap and warning triangle storage)	–	○	○	○	○	○	○	○	○

● = Standard, ○ = Option, at extra cost, □ = Part of an option pack, at extra cost, /E = Standard with ECOnetic Engines

An interior space built for comfort and flexibility



Adjustable load floor

The adjustable rear load floor can be fitted in two positions, either low on the boot floor to create a deeper boot space, or higher up to create a flatter load space with the rear seats lowered. It can also be removed completely. (Option)

Smart technology

Fiesta has a range of intelligent features designed to make life a little easier and offer peace of mind.

1 Active City Stop®

Designed to help reduce the likelihood or consequences of your car colliding with the vehicle in front in slow-moving traffic by applying the brakes if it is detected that a collision is likely. (Option) (Only available with 1.0 Petrol or Diesel Engines)

2 Parking distance sensors

Audible warnings help you park in tight spaces. Available for front and rear, or just rear. (See pages 52-53 for details on availability)

3 Ford SYNC with Emergency Assistance\*

The next generation of in-car connectivity. Ford SYNC lets you operate most popular MP3 players, Bluetooth®-enabled phones and USB drives with remarkably simple voice commands. Plus the Ford Emergency Assistance feature is designed to assist occupants to place an emergency call in the event of an accident - wherever you are in Europe. (Standard on Zetec & above)

4 Integrated navigation and rear-view camera

Fiesta's optional built-in navigation system eliminates the need for pre-route planning. Select reverse gear and the optional rear-view camera comes on automatically in the Sony or navigation display, allowing you to see objects behind your car. (Rear-view camera is standard only on Titanium X, option on Titanium)

\*Uses sensors. Designed to operate at speeds below 19mph.

\*Ford Emergency Assistance operates in over 30 European countries. This feature works when paired with a compatible mobile phone that is with you when any airbag is deployed (excludes knee aibags and rear inflatable safty belts, if equipped) or the fuel pump is shut off. Text function and Emergency Assistance not supported by all European languages. See [www.Ford.co.uk](http://www.Ford.co.uk) for the latest information.

**Note** The Bluetooth® word mark and logos are owned by the Bluetooth SIG, Inc. and any use of such marks by Ford Motor Company Limited and its associated companies is under licence. Other trademarks and trade names are those of their respective owners.

**Note** It is an offence for drivers to use a hand-held mobile phone or similar device while driving.





## Intelligent Protection System<sup>®</sup>

Ford's advanced IPS uses a range of sophisticated technologies designed to keep you protected, including ultra-high strength steel safety cage, Electronic Stability Programme with anti-lock braking system and Emergency Brake Assist and a total of seven airbags including front, side, knee and curtain protection.

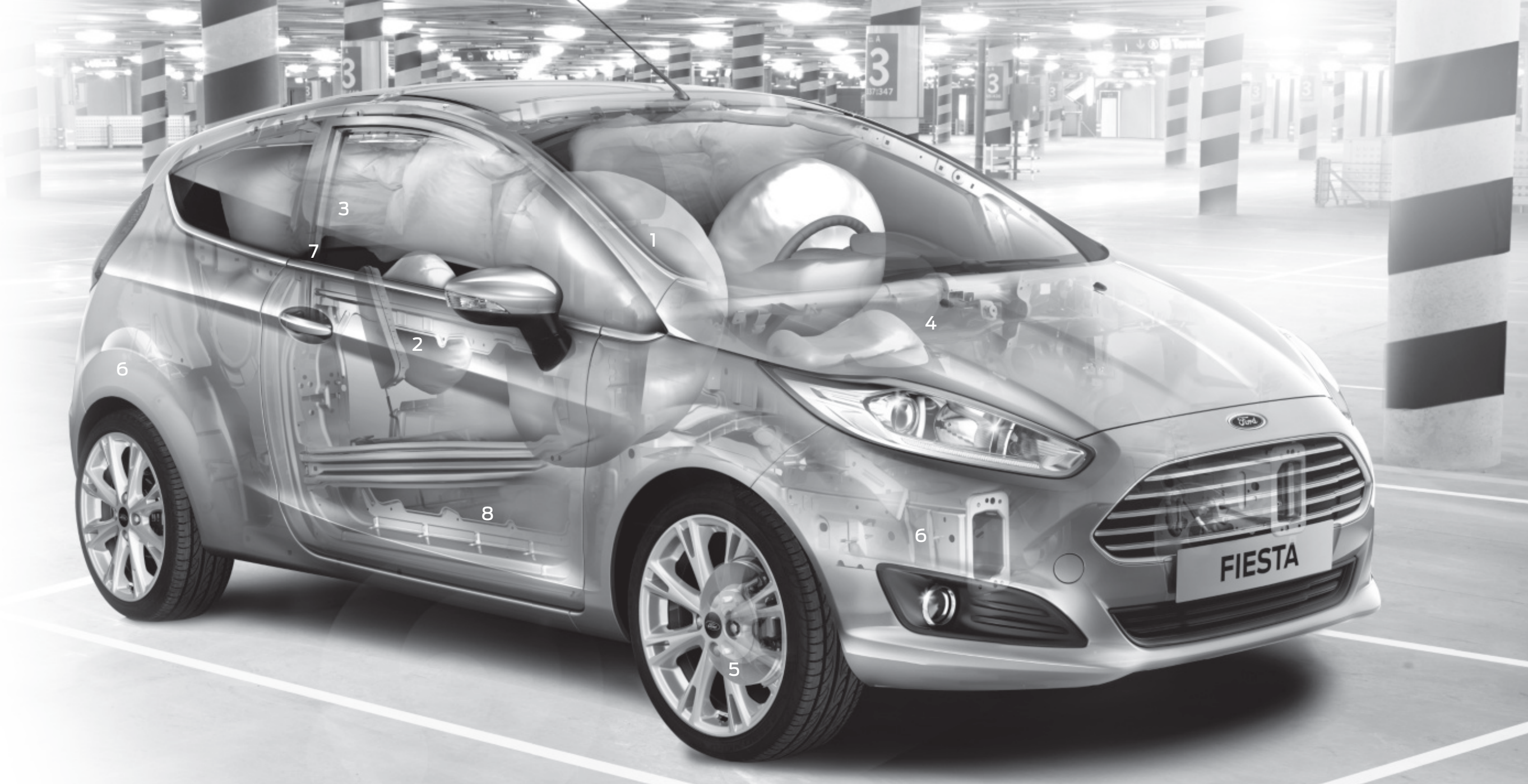
**The Ford Fiesta IPS includes:**

- 1. Driver's and front passenger's airbags and drivers knee airbag
- 2. Driver's and front passenger's side impact airbags
- 3. Side curtain airbags for front and rear seats
- 4. Collapsible steering column and pedals for optimised protection of driver's legs and feet
- 5. Electronic Stability Program with anti-lock brakes, electronic brake-force distribution and Emergency Brake Assist
- 6. Robust computer-optimised body structure with ultra-rigid safety cell and crumple zones
- 7. Pre-tensioners, load-limiting retractors and height-adjustable mounts\* on front seat belts
- 8. Anti-submarining seat bases

**Note:** A rear-facing child seat should never be placed in the front passenger seat when the Ford vehicle is equipped with an operational front passenger's airbag. The safest place for children is properly restrained on the rear seat.

\*Height-adjustable mounts available on 5-door models only.

<sup>®</sup>Uses sensors.





Safety and security equipment

	Studio	Style	Zetec	Zetec S	Titanium	Titanium X	ST	ST2	ST3
Safety and Driver Assistance									
Front disc and rear drum brakes	●	●	●	●	●	●	-	-	-
Front disc and rear disc brakes	-	-	-	-	-	-	●	●	●
Intelligent Protection System (IPS) <sup>1)</sup>	●	●	●	●	●	●	●	●	●
Anti-lock braking system <sup>1)</sup> with electronic brake-force distribution (EBD) <sup>1)</sup> and Emergency Brake Assist (EBA) <sup>1)</sup>	●	●	●	●	●	●	●	●	●
Electronic Stability Programme (ESP) <sup>1)</sup>	●	●	●	●	●	●	●	●	●
Hill Start Assist <sup>2)</sup>	●	●	●	●	●	●	●	●	●
Emergency Brake Warning <sup>2)</sup> – Automatic flashing of hazard warning lights under heavy braking	●	●	●	●	●	●	●	●	●
Airbags – Driver’s and front passenger’s <sup>3*)</sup>	●	●	●	●	●	●	●	●	●
Airbag – Front passenger’s airbag de-activation switch <sup>4*)</sup> and Passenger Airbag Deactivation Indicator <sup>1)</sup>	●	●	●	●	●	●	●	●	●
Airbags – Front side <sup>1)</sup>	●	●	●	●	●	●	●	●	●
Airbags – Curtain, driver side knee airbag <sup>1)</sup>	●	●	●	●	●	●	●	●	●
Active City Stop <sup>1)</sup> (only available with 1.0 petrol and all diesel engines)	-	-	○	○	○	○	-	-	-
Security									
Engine Immobiliser – Passive Anti-Theft System (PATS)	●	●	●	●	●	●	●	●	●
Central locking	●	-	-	-	-	-	-	-	-
Remote central locking with one flip key and one lollipop key	-	●	-	-	-	-	-	-	-
Remote central locking with two flip keys	-	-	●	●	●	-	●	-	-
Remote central locking with two key fobs	-	-	-	-	-	●	-	●	●
Double locking	-	●	●	●	●	●	●	●	●
Ford Power Starter Button	-	-	-	□	□	●	-	●	●
Ford Keyfree System - Keyless entry	-	-	-	□	□	●	-	□	●
Perimeter alarm	-	○	○	●	●	●	-	-	-
Thatcham Category 1 alarm	-	-	-	-	-	-	●	●	●

● = Standard, ○ = Option, at extra cost, □ = Part of an option pack, at extra cost.<sup>1)</sup>Safety feature, <sup>2)</sup>Driver assistance

\*Note: A child seat should never be placed in the front passenger seat when the Ford vehicle is equipped with an operational front passenger’s airbag. The safest place for children is properly restrained on the rear seat.

Hill Start Assist

Designed to prevent you from rolling down a slope when you move your foot from the brake pedal to the accelerator pedal. It works in forward and reverse gears. (Standard)

Mechanical features

	Studio	Style	Zetec	Zetec S	Titanium	Titanium X	ST-1	ST-2	ST-3
Steering									
Electric power-assisted steering (EPAS)	●	●	●	●	●	●	●	●	●
Steering wheel column – Rake- and reach-adjustable	●	●	●	●	●	●	●	●	●
Suspension									
Suspension – Standard tune	●	●/1	●/1	-	●/1	●	-	-	-
Suspension – Sports suspension	-	-	-	●	-	-	-	-	-
Suspension – ST Suspension (Lowered ride height)	-	-	-	-	-	-	●	●	●
Suspension – Lowered (standard only with 1.6 TDCi ECONetic with Auto-Start-Stop)	-	/E	/E	-	/E	-	-	-	-
Suspension – Front stabiliser bar	●	●	●	●	●	●	●	●	●
Technology									
Ford Eco Mode (driver information system) – Only in combination with audio system and trip computer	-	○/E	●	●	●	●	-	-	-
Shift gear indicator – Not available with 1.6 105PS Powershift Engine	●	●	●	●	●	●	●	●	●

● = Standard, ○ = Option, at extra cost. ●/1 Not available with ECONetic Powertrain, /E Standard with ECONetic Powertrain

Ford Auto-Start-Stop

Designed to automatically shut down the engine to save fuel when standing still. When you want to drive off, the engine immediately restarts. (Available on 1.0 petrol engines with manual transmissions and on 1.6 Duratorq TDCi ECONetic engines)

Sports suspension

(Standard on Zetec S)

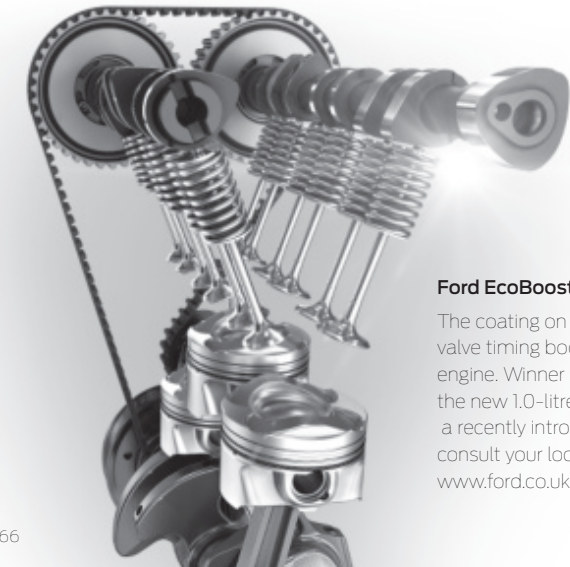


Fuel, performance and emissions

The fuel economy figures quoted in the table below are achieved by following strict EU governed test procedures and are specifically designed to enable customers to compare vehicles from all manufacturers on a like-for-like basis. Fuel consumption is directly affected by the length of the journey; number of passengers and amount of luggage carried; individual driving style; road and traffic conditions; weather conditions; vehicle age, mileage, condition and standard of maintenance; use of vehicle features such as air conditioning; and any modifications to the vehicle such as the addition of a roof rack. Your fuel economy will vary based on these and other factors and, for these reasons, many drivers may not achieve the EU fuel economy figures (below) in day-to-day driving, although the vehicle is technically capable of doing so.

	Euro Stage	Trans-mission	Maximum Power PS (kW)	Torque Nm (Nm with overboost)	CO <sub>2</sub> emissions (g/km) <sup>90</sup>	Fuel consumption (MPG) <sup>90</sup>			Performance <sup>90</sup>		
						Urban	Extra Urban	Combined	Max speed (mph)	0-62 mp/h (secs)	31-62 mp/h** (secs)
1.0 L (80 PS) with Auto-Start-Stop	Euro Stage VI	M5	80 (59)	105	99	5.1 (55.4)	3.8 (74.3)	4.3 (65.7)	103	14.9	17.9
1.0 EcoBoost (100 PS) with Auto-Start-Stop	Euro Stage VI	M5	100 (74)	170	99	5.3 (53.3)	3.7 (76.4)	4.3 (65.7)	112	11.2	14.7
1.0 EcoBoost (100 PS) PowerShift	Euro Stage VI	A6	100 (74)	170	114	6.6 (42.8)	3.9 (72.4)	4.9 (57.7)	112	10.8	N/A
1.0 EcoBoost (125 PS) with Auto-Start-Stop	Euro Stage VI	M5	125 (92)	170 (200)	99	5.3 (53.3)	3.7 (76.4)	4.3 (65.7)	122	9.4	12.2
1.25 Duratec (60 PS)	Euro Stage VI	M5	60 (44)	109	122	6.8 (41.5)	4.3 (65.7)	5.2 (54.3)	94	16.9	17.9
1.25 Duratec (82 PS)	Euro Stage VI	M5	82 (60)	114	122	6.8 (41.5)	4.3 (65.7)	5.2 (54.3)	104	13.3	17.6
1.6 Duratec Ti-VCT (105PS) PowerShift	Euro Stage VI	A6	105 (77)	150	138	8.4 (33.6)	4.5 (62.8)	5.9 (47.9)	114	10.5	N/A
1.6 EcoBoost (182 PS)	Euro Stage VI	M6	182 (134)	240 (290)	138	7.9 (35.8)	4.8 (58.9)	5.9 (47.9)	139	6.9	6.4
1.5 Duratorq TDCi (75 PS)	Euro Stage V	M5	75 (55)	185	98	4.4 (64.2)	3.3 (85.6)	3.7 (76.4)	104	13.5	13.3
1.6 Duratorq TDCi (95 PS)	Euro Stage V	M5	95 (70)	200	95	4.4 (64.2)	3.2 (88.3)	3.6 (78.5)	112	11.7	11.4
1.6 Duratorq TDCi ECOnetic with Auto-Start-Stop (95 PS)	Euro Stage V	M5	95 (70)	200	85	3.7 (76.4)	3.1 (91.1)	3.3 (85.6)	111	12.9	12.7

\*In 4th gear. <sup>90</sup>Ford test figures. <sup>90</sup>The declared fuel consumptions and CO<sub>2</sub> emissions are measured according to the technical requirements and specifications of the European Regulations (EC) 715/2007 and (EC) 692/2008 as last amended. Fuel consumption and CO<sub>2</sub> emissions are specified for a vehicle variant and not for a single car. The applied standard test procedure enables comparison between different vehicle types and different manufacturers. In addition to the fuel efficiency of a car, driving behaviour as well as other non-technical factors are very important in determining a car's fuel consumption and CO<sub>2</sub> emissions. CO<sub>2</sub> is the main greenhouse gas responsible for global warming. A guide on fuel economy and CO<sub>2</sub> emissions which contains data for all new passenger car models is available at any point of sale free of charge or can be downloaded under <http://carfueldata.dft.gov.uk/>.



EcoBoost = more power + better fuel economy

Ford EcoBoost engines

The coating on the piston rings reduces friction; the turbocharger, direct injection and variable valve timing boost efficiency. The result is remarkable performance from such an economical engine. Winner at the International Engine of the Year Awards 2014 for the third time in a row, the new 1.0-litre EcoBoost is available in 100 PS and 125 PS, as well as a recently introduced 140PS version available in the Zetec S Red and Black Editions. Please consult your local Ford dealer on these latest additions to the Fiesta range, or visit [www.ford.co.uk](http://www.ford.co.uk) to download a Zetec S Red and Black Editions brochure.

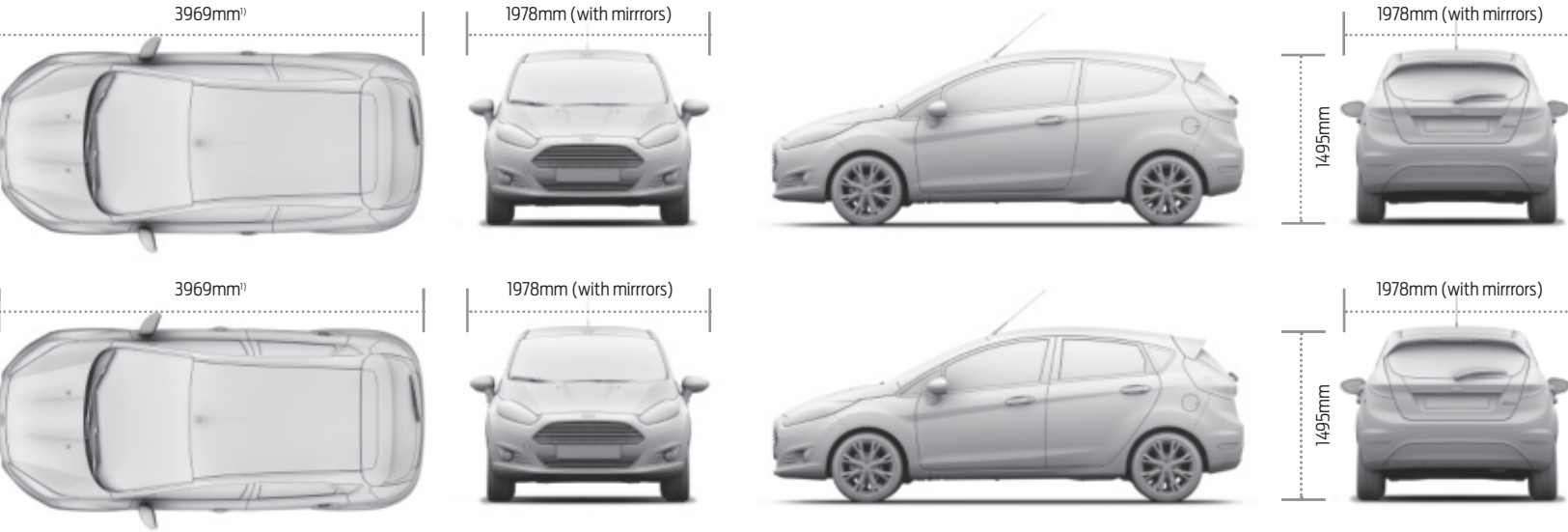


Dimensions

	3 Door	5 Door
Overall length (mm)	3969	3969
Overall length (mm) Zetec S & ST versions (3-Door only)	3982	3982
Overall length (mm) Bumper Styling Kit	3982	3982
Overall width with mirrors (mm)	1978	1978
Overall width without mirrors (mm)	1709	1722
Overall width with folded mirrors (mm)	1764	1764
Overall height (mm) max	1495	1495
Turning circle – Kerb to kerb (m)	10.1	10.1

	3 Door	5 Door
Luggage capacity (litres) <sup>†</sup>		
5-seat mode (with tyre repair kit)	290	290
5-seat mode (with steel spare)	276	276
2-seat mode (with tyre repair kit)	974	974
2-seat mode (with steel spare)	960	960
Fuel tank capacity (litres)		
Petrol	42	42
Diesel	40.5	40.5
ST	48	N/A

<sup>†</sup>Measured in accordance with ISO 3832. Dimensions may vary dependent on the model and equipment fitted.



<sup>1)</sup>Overall length is 3982mm on Zetec S/ST Series and when fitted with Bumper styling kit.



Weights and loads

	Kerbweight (kg)* 3 Door/5 Door	Gross Vehicle Mass (kg)			
		3-Door	5-Door	Max. Towable Mass (braked) (kg) 12%	Max. Towable Mass (unbraked) (kg) 3 Door/5 Door
1.0 Duratec (80 PS) with Auto-Start-Stop	1045/1055	1525	1530	650	520/525
1.0 EcoBoost (100 PS) with Auto-Start-Stop	1091/1101	1550	1555	900	545/550
1.0 EcoBoost (100 PS) PowerShift	1112/1122	1570	1575	900	555/560
1.0 EcoBoost (125 PS) with Auto-Start-Stop	1091/1101	1550	1555	900	545/550
1.25 Duratec (60 PS)	1045/1055	1525	1530	500	500/500
1.25 Duratec (82 PS)	1045/1055	1525	1530	600	520/525
1.6 Duratec Ti-VCT (105PS) PowerShift	1089/1098	1560	1565	650	540/545
1.6 EcoBoost (182PS)	1163	1575	N/A	N/A	N/A
1.5 Duratorq TDCi (75 PS)	1108/1118	1570	1575	750	550/555
1.6 Duratorq TDCi (95 PS)	1108/1118	1570	1575	750	550/555
1.6 Duratorq TDCi ECOnetic with Auto-Start-Stop (95 PS)	1108/1117	1560	1565	N/A	N/A

\*Represents the lightest kerbweight assuming driver at 75 kg, full fluid levels and 90% fuel levels, subject to manufacturing tolerances and options fitted. **Towing limits (braked)** quoted represent the maximum towing ability of the vehicle at its Gross Vehicle Mass to restart on a 12 per cent gradient at sea level. The performance and economy of all models will be reduced when used for towing. **Nose weight limit** is a maximum of 50 kg on all models. **Note** All vehicles are 5-speed manual, unless 1.6 EcoBoost (6-speed manual) or Powershift stated.

Insurance groups

	Studio	Style	Zetec	Zetec S	Titanium	Titanium X	ST-1	ST-2	ST-3
1.0 Duratec (80 PS (59 kW)) with Auto-Start-Stop			6E		7E				
1.0 EcoBoost (100 PS (74 kW)) with Auto-Start-Stop			11E		11E	11E			
1.0 EcoBoost (100 PS (74 kW)) PowerShift			11E		11E	11E			
1.0 EcoBoost (125 PS (92 kW)) with Auto-Start-Stop				15E	15E	16E			
1.25 Duratec (60 PS (44 kW))	3E	5E							
1.25 Duratec (82 PS (60 kW))		7E	7E						
1.6 Duratec Ti-VCT (105 (77 kW)) PowerShift			12E		12E				
1.6 EcoBoost (182 PS (134 kW))							30E	30E	30E
1.5 Duratorq TDCi (75 PS (55 kW))		8E	9E		9E				
1.6 Duratorq TDCi (95 PS (70 kW))				12E		13E			
1.6 Duratorq TDCi ECOnetic with Auto-Start-Stop (95 PS (70 kW))		11E	12E		12E				

E = Exceeds security requirement for model concerned and group rating has been reduced. Insurance ratings are issued by the Association of British Insurers and are shown above in the new 1-50 rating scales.

Roof base carrier, lockable

Lockable base load carrier compatible with a range of attachments. (Accessory)

Thule®\* roof ski/snowboard carrier 727 Deluxe – lockable and extendable

Innovative, fully-lockable ski carrier suitable for up to six pairs of skis or four snowboards. Comfortable slide-out function extends outside the roof area for easy access to your ski equipment. (Accessory)

Thule®\* roof box, lockable

Different sized boxes protect your luggage from weather and theft. Roof box shown is for illustration purposes only. (Accessory)

ClimAir®\* wind deflector

Reduces turbulence and noise for a more enjoyable drive with the windows down, even during light rain. (Accessory)

Mudflaps

Designed to reduce road spray and dirt, whilst protecting the vehicle by preventing damage from stones (accessory)



\*Please see back cover for warranty information.

www.ford-accessories.co.uk  
www.fordlifestylecollection.com



Colour and trim

Model	Studio	Style	Zetec	Zetec S	
Seat trim and colour	Max in Charcoal Black/Soft Charcoal	Match Point in Charcoal Black	Lithos in Charcoal Black	Ultimate/Lux Soft in Charcoal Black	Ultimate/Lux Soft in Charcoal Black
Seat bolster trim and colour	Max in Charcoal Black	View in Charcoal Black with Metal Grey stitching and Machine Silver piping	Domo in Charcoal Black with Metal Grey stitching	Monax/Lux Soft in Soft Charcoal/Charcoal Black with Generic Silver stitching	Monax/Lux Soft in Soft Charcoal/Charcoal Black/Red Hot with Generic Red stitching
Door trim and colour	View in Charcoal Black	View in Charcoal Black	Ambassador in Charcoal Black	Ambassador in Charcoal Black	Ambassador in Charcoal Black
Centre stack bezel	Pegasus	Graphite Anodized	Royal Black	Royal Black	Royal Black
Upper instrument panel/Environment colour	Charcoal Black/Charcoal Black	Charcoal Black/Charcoal Black	Charcoal Black/Charcoal Black	Charcoal Black/Charcoal Black	Charcoal Black/Charcoal Black
Solid body colours					
Blazer Blue	●	●	—	—	—
Frozen White*	*	*	*	*	*
Race Red	●	●	●	●	●
Metallic body colours*					
Copper Pulse	—	—	*	*	—
Fashionista	—	*	*	—	—
Hot Mustard	—	—	*	*	—
Midnight Sky	—	*	*	*	*
Moondust Silver	*	*	*	*	—
Deep Impact Blue	—	*	*	*	—
Panther Black	*	*	*	*	*
Spirit Blue	—	—	—	—	—
Pearlescent body colours*					
Candy Blue	—	—	*	*	—
Hot Magenta	—	*	*	*	—
Molten Orange	—	—	—	—	—

● = Available, \* = Option at extra cost, — = Not available

	Titanium		Titanium X		ST-1	ST-2/ST-3	ST-2/ST-3
Modena leather in Metallic Effect*	Lithos in Charcoal Black	Modena leather in Metallic Effect*	Smitty Tech in Silver/Black	Modena leather in Metallic Effect*	Airfield in Silverstone Grey	Protection in Molten Orange	Protection in Smoke Storm
Modena leather in Charcoal Black with Metal Grey stitching	Domo in Charcoal Black with Metal Grey stitching	Modena leather in Charcoal Black with Metal Grey stitching	Modena leather in Charcoal Black with Metal Grey stitching	Modena leather in Charcoal Black with Metal Grey stitching	Lux Soft in Charcoa Black with Generic Silver stitching	Torino leather in Charcoal Black/Lux Soft in Molten Orange with Molten Orange Stitching	Tornio leather in Charcoal Black/Lux Soft in Smoke Storm with Generic Silver stitching
Ambassador in Charcoal Black	Ambassador in Charcoal Black	Ambassador in Charcoal Black	Ambassador in Charcoal Black	Ambassador in Charcoal Black	Ambassador in Charcoal Black	Ambassador in Charcoal Black	Ambassador in Charcoal Black
Royal Black	Royal Black	Royal Black	Royal Black	Royal Black	Satin Black	Satin Black	Satin Black
Charcoal Black/Charcoal Black	Charcoal Black/Charcoal Black	Charcoal Black/Charcoal Black	Charcoal Black/Charcoal Black	Charcoal Black/Charcoal Black	Charcoal Black/Charcoal Black	Charcoal Black/Charcoal Black	Charcoal Black/Charcoal Black
—	—	—	—	—	—	—	—
*	*	*	*	*	*	*	*
●	●	●	●	●	●		●
*	*	*	*	*	—	—	—
—	*	*	*	*	—	—	—
*	*	*	*	*	—	—	—
*	*	*	*	*	—	—	—
*	*	*	*	*	—	—	—
*	*	*	*	*	—	—	—
*	*	*	*	*	*	*	*
—	—	—	—	—	*	—	*
*	*	*	*	*	—	—	—
*	*	*	*	*	—	—	—
—	—	—	—	—	*	*	*



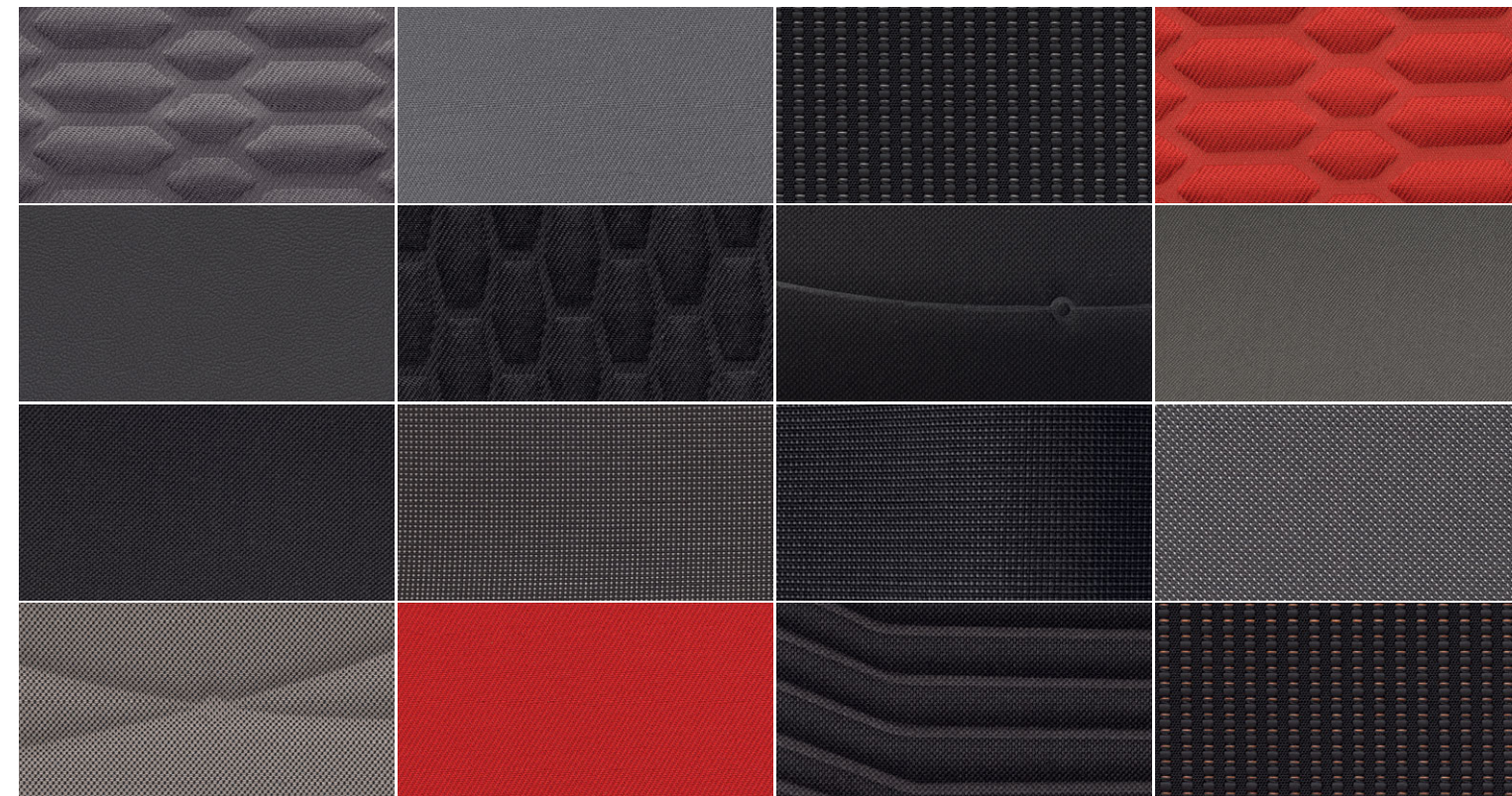
# More of what you want

When it comes to choosing your Fiesta, there really is something for everyone. Our full range of high-quality seat and door trims let you create a beautifully-crafted, comfortable environment that reflects the fun and spirited driving experience of Fiesta.



## FORD FIESTA

Trim appendix

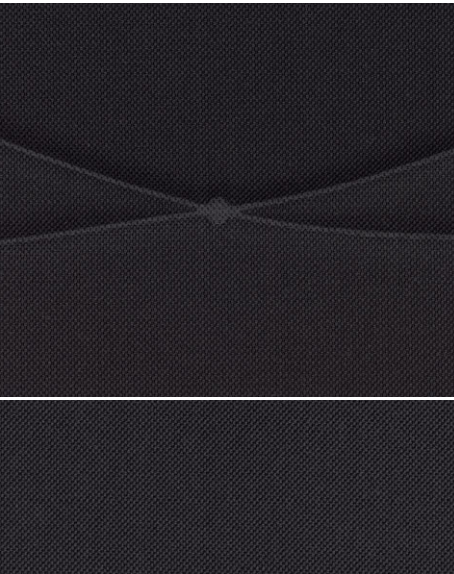


Not all trim combinations are available with all exterior colour options. Talk to your Ford Dealer for the latest information. Colours and trims reproduced in this brochure may vary from the actual colours due to the limitations of the printing processes used.



# Style

- Seat trim and colour**  
Match Point in Charcoal Black
- Seat bolster trim and colour**  
View in Charcoal Black with Metal Grey stitching and Machine Silver piping
- Door trim and colour**  
View in Charcoal Black
- Centre stack bezel**  
Graphite Anodized
- Upper instrument panel/Environment colour**  
Charcoal Black/Charcoal Black



# Zetec

- Seat trim and colour**  
Lithos in Charcoal Black
- Seat bolster trim and colour**  
Domo in Charcoal Black with Metal Grey stitching
- Door trim and colour**  
Ambassador in Charcoal Black
- Centre stack bezel**  
Royal Black
- Upper instrument panel/Environment colour**  
Charcoal Black/Charcoal Black





# Zetec S

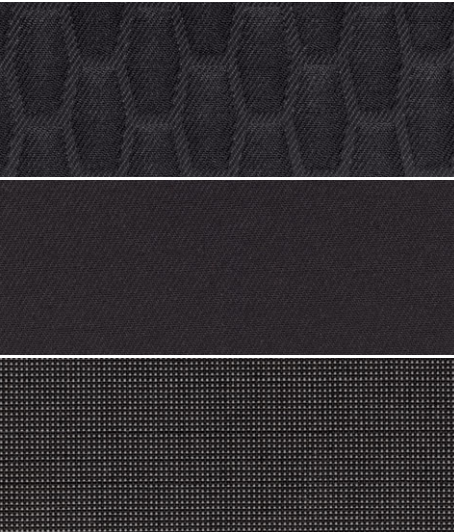
**Seat trim and colour**  
Ultimate/Lux Soft in Charcoal Black

**Seat bolster trim and colour**  
Monax/Lux Soft in Soft Charcoal/Charcoal Black with Generic Silver stitching

**Door trim and colour**  
Ambassador in Charcoal Black

**Centre stack bezel**  
Royal Black

**Upper instrument panel/Environment colour**  
Charcoal Black/Charcoal Black



# Zetec S

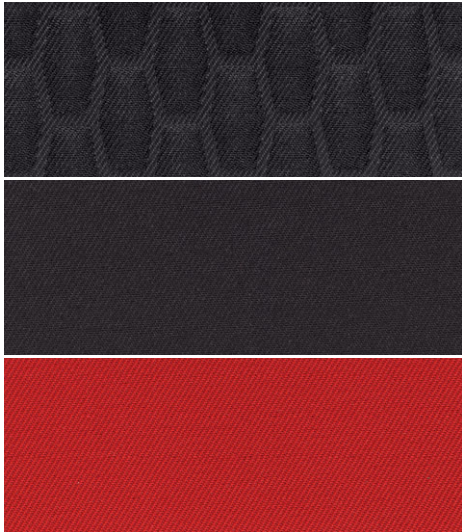
**Seat trim and colour**  
Ultimate/Lux Soft in Charcoal Black

**Seat bolster trim and colour**  
Monax/Lux Soft in Soft Charcoal/Charcoal Black/Red Hot with Generic Red stitching

**Door trim and colour**  
Ambassador in Charcoal Black

**Centre stack bezel**  
Royal Black

**Upper instrument panel/Environment colour**  
Charcoal Black/Charcoal Black





# Zetec S

**Seat trim and colour**  
Modena leather in Metallic Effect\*

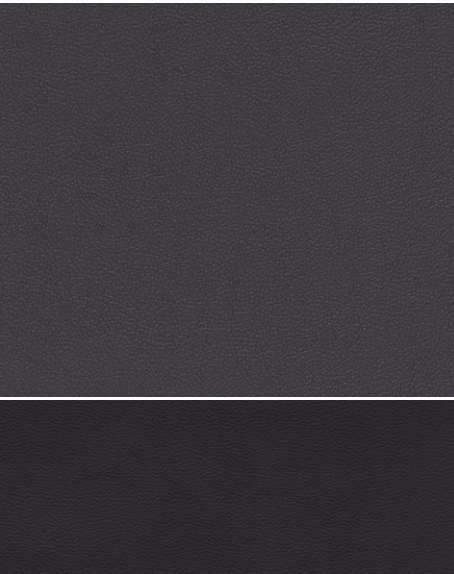
**Seat bolster trim and colour**  
Modena leather in Charcoal Black with Metal Grey stitching\*

**Door trim and colour**  
Ambassador in Charcoal Black

**Centre stack bezel**  
Royal Black

**Upper instrument panel/Environment colour**  
Charcoal Black/Charcoal Black

\*Option at extra cost.



# Titanium

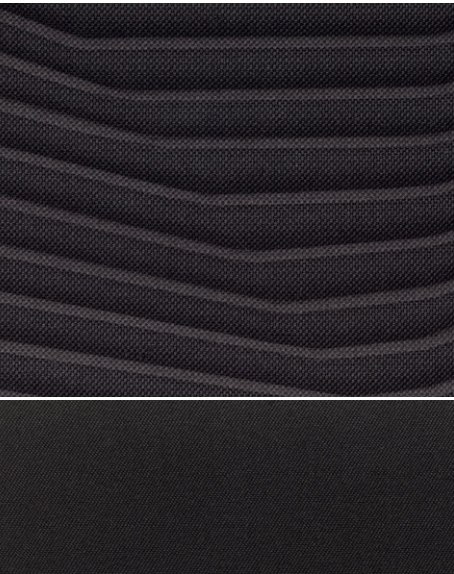
**Seat trim and colour**  
Lithos in Charcoal Black

**Seat bolster trim and colour**  
Domo in Charcoal Black with Metal Grey stitching

**Door trim and colour**  
Ambassador in Charcoal Black

**Centre stack bezel**  
Royal Black

**Upper instrument panel/Environment colour**  
Charcoal Black/Charcoal Black





# Titanium

**Seat trim and colour**  
Modena leather in Metallic Effect\*

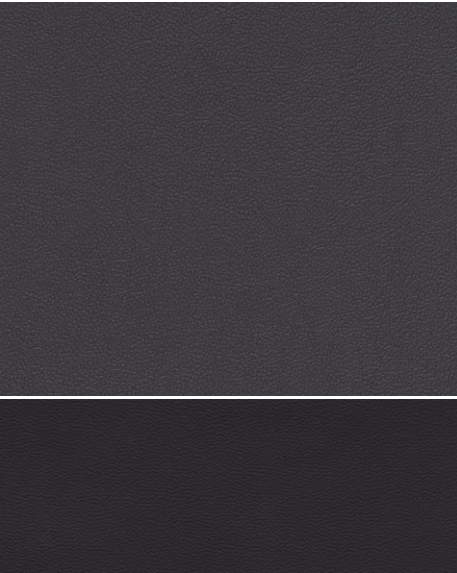
**Seat bolster trim and colour**  
Modena leather in Charcoal Black with Metal Grey stitching

**Door trim and colour**  
Ambassador in Charcoal Black

**Centre stack bezel**  
Royal Black

**Upper instrument panel/Environment colour**  
Charcoal Black/Charcoal Black

\*Option at extra cost.



# Titanium X

**Seat trim and colour**  
Smitty Tech in Silver

**Seat bolster trim and colour**  
Modena leather in Charcoal Black with Metal Grey stitching

**Door trim and colour**  
Ambassador in Charcoal Black

**Centre stack bezel**  
Royal Black

**Upper instrument panel/Environment colour**  
Charcoal Black/Charcoal Black





# Titanium X

**Seat trim and colour**  
Modena leather in Metallic Effect\*

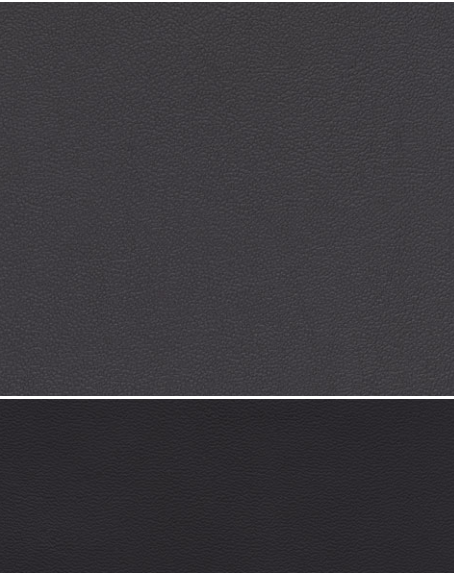
**Seat bolster trim and colour**  
Modena leather in Charcoal Black with Metal Grey stitching

**Door trim and colour**  
Ambassador in Charcoal Black

**Centre stack bezel**  
Royal Black

**Upper instrument panel/Environment colour**  
Charcoal Black/Charcoal Black

\*Option at extra cost.



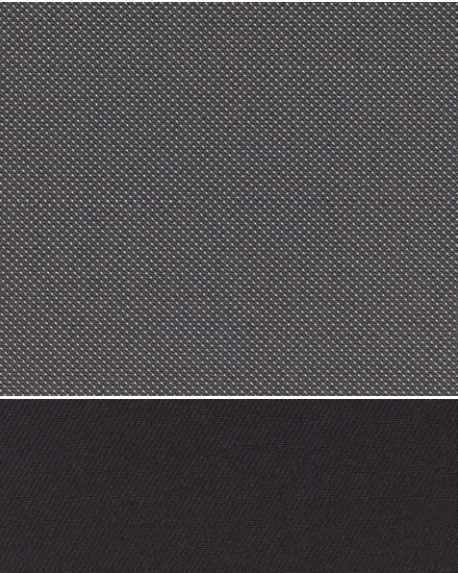
**Seat trim and colour**  
Airfield in Silverstone Grey

**Seat bolster trim and colour**  
Lux Soft in Charcoal Black with Generic Silver stitching

**Door trim and colour**  
Ambassador in Charcoal Black

**Centre stack bezel**  
Satin Black

**Upper instrument panel/Environment colour**  
Charcoal Black/Charcoal Black





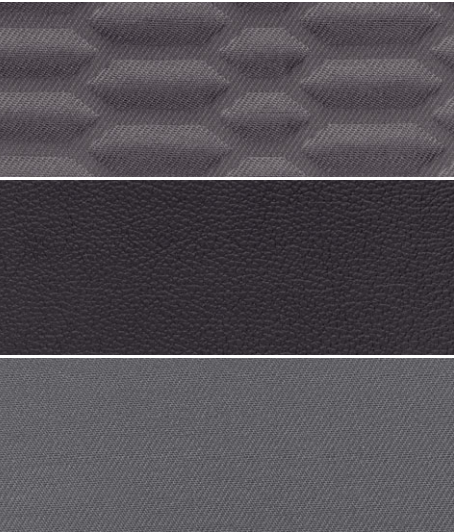
# ST-2/ST-3

- Seat trim and colour**  
Protection in Molten Orange
- Seat bolster trim and colour**  
Torino leather in Charcoal Black/Lux soft Orange with Molten Orange stitching
- Door trim and colour**  
Ambassador in Charcoal Black
- Centre stack bezel**  
Satin Black
- Upper instrument panel/Environment colour**  
Charcoal Black/Charcoal Black
- Image shown is ST-2



# ST-2/ST-3

- Seat trim and colour**  
Protection in Smoke Storm
- Seat bolster trim and colour**  
Torino leather in Charcoal Black/Lux soft in Smoke Storm with Generic Silver stitching
- Door trim and colour**  
Ambassador in Charcoal Black
- Centre stack bezel**  
Satin Black
- Upper instrument panel/Environment colour**  
Charcoal Black/Charcoal Black
- Image shown is ST-3





Bodystyle:

Series:

Engine:

Transmission:

Colour:

Trim:

Wheels:

Audio:

Options:

Option Packs:

Accessories:

Finance:

\* Finance subject to status. Guarantee/indemnities may be required. Freepost Ford Credit.

Ford Credit is a trading style of FCE Bank plc. which is authorised by the Prudential Regulation Authority and regulated by the Financial Conduct Authority and the Prudential Regulation Authority under firm reference number 204469.

<sup>†</sup>Ford Lease is provided by ALD Automotive Ltd, trading as Ford Lease, Oakwood Park, Lodge Causeway, Fishponds, Bristol, BS16 3JA. ALD Automotive is registered in England No. 987418. For the purposes of the Data Protection Act 1998 the data controllers in relation to any information you supply are Ford Motor Company Limited, FCE Bank plc and ALD Automotive. Finance subject to status. Guarantees and indemnities may be required. ALD Automotive is authorised and regulated by the Financial Conduct Authority in respect of general insurance products.

Choose

Use the form opposite to specify your new car right down to the wheels, audio, options and accessories, then take it to your Ford Dealer.

You can also specify your new car online using the Ford Configurator. It lets you instantly see what your car will look like – inside and out – from multiple angles. And a tally of your choices and their prices helps you keep to your budget. Visit [www.ford.co.uk/ConfigureyourCar](http://www.ford.co.uk/ConfigureyourCar)

Finance

When it comes to financing your car, our size and expertise means we’re well placed to provide you with a wide range of finance products.

Ford Credit\* provides a range of finance products for your car whether you are a private or business user.

Ford Lease<sup>†</sup> specialises in contract hire and leasing and provides an alternative range of finance plans which can be tailored to suit your business. Business users only.

For more information about our finance products visit [ford.co.uk](http://ford.co.uk)

Drive

When you drive away in your new car, we’re with you all the way. Ford has the largest authorised service network in the UK to help you keep your car in the best condition.

And should your new Ford ever require accident repair, a Ford Accident Repair Centre is the best place to get your car back to its pre-accident condition and on the road as quickly as possible.

Contact

Ford Credit Customer Services 0845 712 5490  
Ford Lease Customer Services 0844 600 1405

To configure your Ford online visit [www.ford.co.uk/ConfigureyourCar](http://www.ford.co.uk/ConfigureyourCar)  
To look at finance for your Ford visit [www.fordcredit.co.uk/BuyingAndProtectingYourFord](http://www.fordcredit.co.uk/BuyingAndProtectingYourFord)  
Business users visit [www.ford.co.uk/FordFleet](http://www.ford.co.uk/FordFleet)



Ford Warranty and Servicing Plans

	All Fiesta models
3-year/60,000 miles* Ford Warranty	●
1-year/unlimited miles* Ford Assistance Roadside Cover (Europe)	●
2-year/2 services or 3 years/3 services* Ford Protect Premium Plan, including scheduled servicing and extended Ford Assistance	○
1-year/unlimited miles* Paint Warranty	●
12-year/unlimited miles* Perforation Warranty	●

● = Standard, ○ = Optional, at extra cost.  
\*Whichever occurs soonest; from date of first registration. Year 1 - unlimited mileage. Subject to terms and conditions.

**Illustrations, descriptions and specifications.** This catalogue was correct at the time of going to print. However, Ford policy is one of continuous product development. The right is reserved to change specifications, colours and prices of the models and items illustrated and described in this publication at any time. For the latest details always consult your Ford Dealer. **Optional equipment.** Throughout this publication, wherever a feature is described as being an 'Option' or 'Option Fitment/Pack' etc, you should assume that it will be at extra cost to the base vehicle, unless specifically stated to the contrary. All models and colour combinations are subject to availability. **Note.** Some images portrayed are of a pre-production model and/or are computer generated, therefore, the design/features on the final version of the vehicle may differ in various respects. In addition, some of the features shown on the vehicles may be optional. **Note.** This brochure contains both original Ford accessories as well as a range of products from our suppliers. **†**The identified accessories are carefully selected third party supplier branded accessories which do not come with a Ford warranty but are covered by the third party supplier's own warranty, the details of which can be obtained from your Ford Dealer. **Note.** The Bluetooth® word mark and logos are owned by the Bluetooth SIG, Inc. and any use of such marks by Ford Motor Company is under licence. The iPod word mark and logos are the property of Apple Inc. Other trademarks and trade names are those of their respective owners. **Note.** Some driver assistance features and safety features described in this brochure are designed to function using sensors, whose performance may be affected under certain weather or environmental conditions.

**The Government fuel figures** do not express or imply any guarantee of the fuel consumption of any particular vehicle. The vehicles themselves have not been tested and there are inevitably differences between individual vehicles of the same model. In addition, a vehicle may incorporate particular modifications. Furthermore, the driver's style and road and traffic conditions, as well as the extent to which the vehicle has been driven and the standard of maintenance, will affect its fuel consumption. **Insurance groups** are only as recommended by the Association of British Insurers. You should always consult your insurance adviser for confirmation.



Ford and BP – working together to reduce fuel consumption and emissions.



EURO NCAP advanced  
2012 Reward for Ford MyKey



EURO NCAP advanced  
2012 Reward for Ford SYNC with Emergency Assistance



INTERNATIONAL  
**engine**  
of the year  
awards 2014  
Presented by engine technology international magazine  
International Engine of the Year  
Ford 1.0 litre EcoBoost



BEST  
GLOBAL  
GREEN  
BRAND  
2014  
International Engine of the Year

Published by Ford Motor Company Limited,  
Brentwood, Essex, England.  
Registered in England No. 235446.  
FA 1540/11  
BJN 202813. FoE H38E.  
PN 371502/0115/100m/GBR en  
February 2015.  
© Ford Motor Company Limited.





[www.ford.co.uk](http://www.ford.co.uk)



Go Further