

FORD TOURNEO CONNECT



Go Further



Visionary. Ingenious. Remarkable.
Every vehicle bears his signature.

Henry Ford



Model on the left is a Ford Tourneo Connect Titanium with Solar exclusive body colour (option) and 17" alloy wheels (option).
Model above is a Ford Grand Tourneo Connect Titanium with Tectonic Silver exclusive body colour (option) and 17" black machined alloy wheels (option).



Life should be a balance not a compromise.

The Ford Tourneo Connect is a relaxing and comfortable place to be. Great to drive, great to sit in, it boasts premium finishes, high-quality materials and fuel efficiency without compromising everyday practicality. Available in two sizes, the 5 seat Tourneo Connect and the 7 seat Grand Tourneo Connect, you'll find a model that fits your life perfectly.

Model shown is a Ford Tourneo Connect Titanium with Solar exclusive body colour (option) and 17" alloy wheels (option).

Built for a long and adventurous life.

Real life is about taking the rough with the smooth. It involves the occasional bump and scrape. It's about opening and closing doors thousands of times, sitting in traffic jams and enjoying the open road. Tested to extremes for toughness and durability, both in the laboratory and in real-world conditions, the Ford Tourneo Connect can take it all.

Model shown is a Ford Tourneo Connect Titanium with Solar exclusive body colour (option), 17" alloy wheels (option), roof rail crossbars (option) and Thule⁺ roof box (accessory).

⁺Item covered by third party supplier's warranty, please see back cover for details.



“Call Dad”

“Call Chris”

“Call home”

“Read message”

“Shuffle”

“Call office”

“Play album “Greatest Hits”

“What’s playing?”



Use your voice like another pair of hands.

Ford SYNC 2 with Voice Control and Touchscreen lets you select music, control built-in navigation (option), adjust climate control (when EATC is fitted), make and receive hands-free calls and choose contacts from your phone list with remarkably simple voice commands. It will even read out your incoming text messages (compatible mobile phones only). You can also do all that through the 6" high-resolution colour touchscreen.

The **Ford Emergency Assistance*** feature is designed to assist occupants to place an emergency call and provide the emergency services with vehicle location information in their own language.

*Ford Emergency Assistance is an innovative SYNC feature that uses a Bluetooth®-paired and connected mobile phone to help vehicle occupants initiate a direct call to the local Communications Centre, following a vehicle crash event involving an airbag deployment or fuel pump shut off. The feature operates in more than 40 European countries and regions.



Petrol or diesel?

We’ve made both options equally tempting.

1.0 EcoBoost petrol

With turbocharging, direct petrol injection and variable valve timing, our award-winning EcoBoost engines deliver the same performance as larger engines, but with much better fuel economy and lower emissions. Not available on Grand Tourneo Connect.



1.5 TDCi diesel

Our 100PS and 120PS TDCi diesel engines impress with their refined power and superb efficiency. Cruising on the motorway or out on the highways and byways, their smooth torque delivery is invaluable on inclines or when overtaking. Both the 100PS and 120 PS TDCi diesel engines are also available with a choice of manual or automatic transmission.

*100 PS automatic available summer 2016.



Surround yourself with smart ideas.

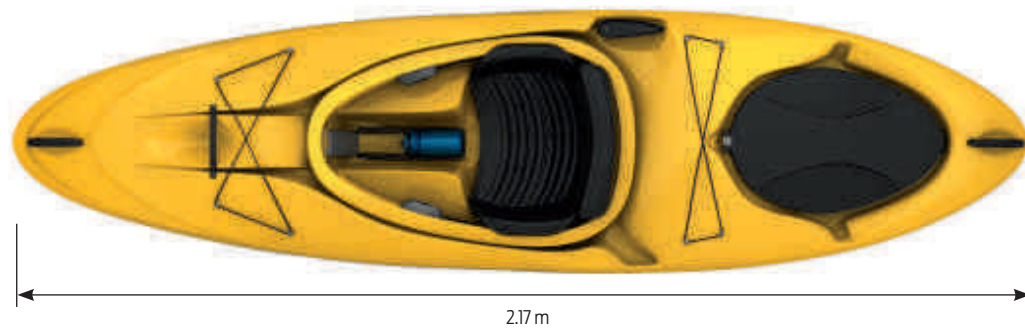
At Ford, the smart ideas are the ones that make your life a little easier. In the Tourneo Connect, you'll find front and rear parking sensors, auto headlights and wipers and a rear-view camera. Another innovative programmable feature is MyKey®, which lets you tailor vehicle settings to suit individual users and encourages safer driving. There's also a multitude of storage compartments, including underfloor stowage and a hidden compartment in the instrument panel that can store and charge your portable electronic devices.

Features listed above are optional and availability varies by series.

Note: Image shows automatic transmission, option on selected diesel models. Image also shows optional SYNC 2 with Satellite Navigation, DEATC and Medium Stone interior.

Flexibility is the mother of convenience.

The seats in the Tourneo and Grand Tourneo Connect take adaptability to a new level. The Tourneo second row seats tumble forward or can be removed. In the Grand Tourneo Connect the second row drops flat for easy access to the third row, which can also be folded flat to create a totally level surface to make room for larger loads. Handy stowage solutions, including overhead lockers for your passengers' belongings, keep the cabin clutter free. From 7 adults to a kayak, and most things in between, if you need to move it, the Tourneo and Grand Tourneo Connect can take it.



1. Secure high-level stowage space*
 2. Aircraft style overhead lockers*
 3. Overhead stowage*
- * Not all features are available on all models





Style

Key exterior features

- 16" steel wheels with full wheel covers
- Body colour front bumper
- Door mirrors with blind spot eliminator
- Dual sliding rear doors
- 'Easy fuel' fuel filler
- Rear liftgate with high mounted brake light
- Immobiliser, remote central/double locking

Key interior features

- DAB radio with USB, Bluetooth® and Voice Control, with Steering wheel controls
- Power front windows, one-shot down on driver's side
- Front overhead shelf & instrument panel stowage box
- 12 V power point in front and rear
- Rake & Reach adjustable steering column
- Full front, side and curtain airbags
- Trip computer

Engines:

- 1.0 EcoBoost 100 PS (74 kW) (not available for Grand Tourneo Connect)
- 1.5 TDCi 100 PS (74 kW)

Key Options available:

- Manual air conditioning, Power 2nd row windows, Quickclear heated windscreen



Ford Easy-Fuel capless refuelling system

(Standard)



Zetec

Exterior features in addition to Style

- Electrically-operated and heated door mirrors
- Front fog lights
- 'Quickclear' heated windscreen and washer jets

Interior features in addition to Style

- Power second row windows
- DAB radio/CD system with 3.5" dot-matrix multi-function display, MP3 capability, SYNC 1 with Emergency Assistance, Bluetooth® with Voice Control and six speakers
- Manual air conditioning
- Front dome light with two map lights
- 12V power point in luggage compartment
- 8 way drivers seat with fore/aft, recline, height and lumbar adjustment

Engines:

- 1.0 EcoBoost 100 PS (74 kW) (not available for Grand Tourneo Connect)
- 1.5 TDCi 100 PS (74 kW)
- 1.5 TDCi 120 PS (88 kW)

Key Options available:

- Sport styling kit, City safety pack, Front and rear parking aids

Note The Bluetooth® word mark and logos are owned by the Bluetooth SIG, Inc. and any use of such marks by Ford Motor Company Limited and its associated companies is under licence. Other trademarks and trade names are those of their respective owners.



Electrically-operated and heated door mirrors

(Standard)



Titanium

Exterior features in addition to Zetec

- 16" 5-spoke alloy wheels
- Body colour bodyside mouldings and door handles
- Panorama roof and rear privacy glass
- Body colour rear bumper
- Integrated roof rails
- Power-foldable, body coloured door mirrors
- Active City Stop
- Rear parking distance sensors
- Auto-headlamps & rain-sensing wipers
- Static cornering front fog lamps

Interior features in addition to Zetec

- One-touch up/down power front windows with global opening/closing
- Child observation mirror
- Front floor mats
- Cruise Control
- Leather-trimmed steering wheel & gearknob
- Auto-dimming rear-view mirror
- Chrome door handles
- Drivers seat armrest

Engines:

- 1.5 TDCi 100 PS (74 kW) (not available on Grand Tourneo Connect)
- 1.5 TDCi 120 PS (88 kW)

Key options:

- Dual automatic temperature control, 17" alloy wheels, SYNC 2 with Satellite Navigation



Panoramic roof with privacy glass

Image on far left shows Dual Automatic Temperature Control (option)

We chose
Moondust Silver.
Which one will
you choose?



Frozen White
Standard body colour



Moondust Silver
Premium body colour*



Solar
Exclusive body colour*



Shadow Black
Premium body colour*



Blazer Blue
Standard body colour



Tectonic Silver
Exclusive body colour*



Deep Impact Blue
Premium body colour*



Magnetic
Premium body colour*



Race Red
Standard body colour

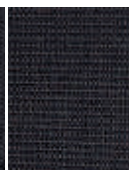
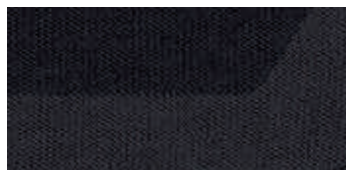
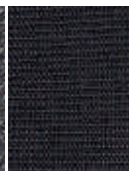
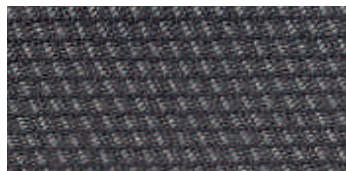


Metalicious
Exclusive body colour*
(Available from July, 2016)

*Premium and Exclusive body colours are optional at extra cost.
The Ford Tourneo Connect is covered by the Ford Perforation Warranty for 12 years from the date of first registration. Subject to terms and conditions.
Note The vehicle images used are to illustrate body colours only and may not reflect current specification or product availability in certain markets. Colours and trims reproduced within this brochure may vary from the actual colours, due to the limitations of printing processes used.

A feel for comfort.

Whether you choose Style, Zetec or Titanium, you'll find stylish but practical interior trims.



1. Style

Insert: Traxon in Charcoal Black
Bolster: Max in Charcoal Black

2. Zetec

Insert: Route in Charcoal Black
Bolster: Max in Charcoal Black

3. Zetec

Insert: Route in Medium Stone
Bolster: Max in Medium Stone

4. Titanium

Insert: Chicane in Charcoal Black
Bolster: Malt in Charcoal Black

5. Titanium

Insert: Chicane in Medium Stone
Bolster: Malt in Medium Stone





Wheels



16" 5-spoke premium silver alloy wheel
(Option and accessory)



16" 5-spoke alloy wheel
(Option and accessory)



17" 5-spoke black machined alloy wheel
(Option and accessory)



17" 10-spoke alloy wheel
(Option and accessory)

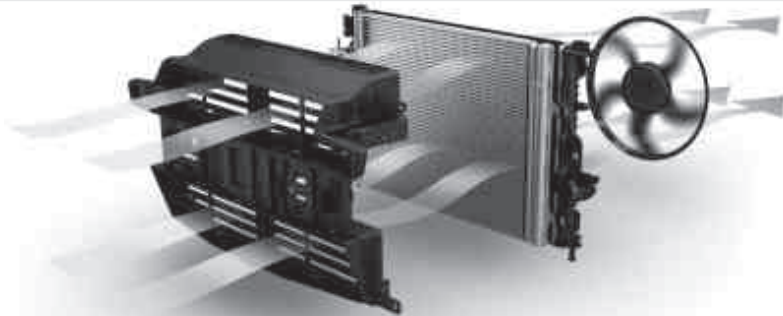
	Torneo Connect			Grand Torneo Connect		
	Style	Zetec	Titanium	Style	Zetec	Titanium
Wheels						
Steel – 16"x 6½, with Style wheel hub caps (Fitted with 205/60 tyres)*	●	-	-	-	-	-
Steel – 16"x 6½, wheel covers (Fitted with 205/60 tyres)*	-	●	-	●	●	-
Alloy – 16"x6½" 5-spoke (Fitted with 205/60 tyres)*	-	○	●	-	○	●
Alloy – Premium 16"x6½" 5-spoke (Fitted with 205/60 tyres)*	-	○	○	-	○	○
Alloy – 17"x6½" 10 spoke (Fitted with 205/55 tyres)*	-	-	○	-	-	○
Alloy – Premium 17"x6½" 5-spoke Black machined finish (Fitted with 205/55 tyres)*	-	○	○	-	○	○
Spare wheel (in lieu of standard inflator kit)	○	○	○	○	○	○

● = Standard, ○ = Option, at extra cost, □ = Part of an option pack, at extra cost.
*The wheel you choose will be fitted with the tyre size noted, but no choice of tyre brand is available.

Generous service intervals of up to 20,000 miles
(or 1 year) further reduce your running costs.

Exterior features

	Touneo Connect			Grand Touneo Connect		
	Style	Zetec	Titanium	Style	Zetec	Titanium
Design features						
Front bumper – Body colour	●	●	●	●	●	●
Rear bumper – Self colour	●	●	-	●	●	-
Rear bumper – Body colour	-	□	●	-	□	●
Rear bumper scratch pad (to protect rear bumper)	-	□	-	-	□	-
Door and liftgate handles – Self-colour	●	●	-	●	●	-
Door and liftgate handles – Body colour	-	□	●	-	□	●
Door mirrors – Manual with self-coloured housings	●	-	-	●	-	-
Door mirrors – Electrically-operated and heated, self-coloured housings	○	●	-	○	●	-
Door mirrors – Electrically-operated and heated, auto-fold, body-coloured housings	-	○	●	-	○	●
Blind Spot Information System	-	□	□	-	□	□
Front lower grilles – Self-colour	●	●	●	●	●	●
Active grille shutter (Standard 1.0 EcoBoost petrol, option on manual diesel engines, not available on automatic transmission)	● / □ / -	● / □ / -	- / □ / -	- / □ / -	- / □ / -	- / □ / -
Wide bodyside moulding – Self-colour	●	●	-	●	●	-
Wide bodyside moulding – Body colour	-	□	●	-	□	●
Fog light bezels – Black	●	-	-	●	-	-
Fog light bezels – Body colour	-	●	●	-	●	●
Roof rails	-	□	●	-	□	●
Roof rails with cross bars	○	○	○	○	○	○
Fixed tow bar (13 pin, includes Trailer Sway Control)	○	○	○	○	○	○
Detachable tow bar (includes 13 pin e-kit and Trailer Sway Control)	○	○	○	○	○	○
Mudflaps – Front and rear	○	○	○	○	○	○
Front lip spoiler (not fitted on the 1.0 EcoBoost engine)	● / -	● / -	●	●	●	●
Convenience features						
Doors – Dual side	●	●	●	●	●	●
Doors – Rear cargo liftgate	●	●	●	●	●	●
Parking distance sensors – Rear	○	○	●	○	○	●
Parking distance sensors – Front and rear	-	○	○	-	○	○



Active Grille Shutter

Designed to improve aerodynamics and lower fuel consumption. (Standard on 1.0-litre EcoBoost, option as part of Fuel Economy Pack)

Exterior features

	Touneo Connect			Grand Touneo Connect		
	Style	Zetec	Titanium	Style	Zetec	Titanium
Quickclear heated windscreen with heated washer jets						
Wipers – 2-speed variable intermittent	●	●	-	●	●	-
Door windows – Global open/close	-	-	●	-	-	●
Wipers rain sensitive	□	□	●	□	□	●
Wipers – Rear liftgate wash/wipe	●	●	●	●	●	●
Windows – Sliding second row, left hand and right hand sides	○	●	●	○	●	●
Windows – Fixed second row	●	-	-	●	-	-
Windows – Fixed third row, left hand and right hand sides	●	●	●	●	●	●
Rear window – Fixed, heated	●	●	●	●	●	●
Rear privacy glass	-	○	●	-	○	●
Panorama roof	-	○	●	-	○	●
Fog lights – Front	○	●	□	○	●	□
Fog lights – Static cornering lights	□	○	●	□	○	●
Fog lights – Rear	●	●	●	●	●	●
Headlights – Halogen, with Black Bezel (chrome on Titanium)	●	●	●	●	●	●
Headlights – Halogen with Chrome Bezel	-	□	●	-	□	●
Headlights – Courtesy delay	□	□	●	□	□	●
Headlights – Day running lights	●	●	●	●	●	●
Headlights – Automatic	□	○	●	□	○	●
High-mounted rear brake light	●	●	●	●	●	●
Option Packs						
Sport styling kit – Includes front and rear bumper skid plate, bumper scratch pad, 17" black machined alloy wheels, locking wheel nuts, roof rails in silver, body colour bodyside mouldings and door handles, body colour rear bumper, body colour mirror caps, upper front grille chrome bar, lower front grille chrome surround, chrome headlight bezel and static cornering lights	-	○	-	-	○	-
Comfort Pack – Includes manual air conditioning, cruise control and adjustable speed limiter	○	-	-	○	-	-
Style Pack - Includes roof rails, rear privacy glass and 5-spoke 16" alloy wheels	-	○	-	-	○	-

● = Standard, ○ = Option, at extra cost, □ = Part of an option pack, at extra cost.

Quickclear heated windscreen

Designed to demist the screen in seconds, even on frosty mornings.



Interior guide

Ford Tourneo Connect Titanium comes with a wealth of useful features to help make your life a little easier and delivers the most connected and enjoyable driving experience. Amongst the features you'll find are:

1. Leather-trimmed steering wheel with audio and cruise control toggles
2. Leather-trimmed gearshift knob
3. Radio/CD system with 3.5" dot-matrix multi-functional display, MP3 capability, SYNC with Emergency Assistance, Bluetooth® with Voice Control and six speakers
4. Dual-zone Electronic Automatic Temperature Control (DEATC) (optional)
5. Trip computer
6. Dual front cup holders
7. 12 V power point in instrument panel
8. Glovebox with illumination
9. Drivers's Instrument panel storage compartment
10. Driver's sunglasses holder
11. Child observation mirror
12. Heated windscreen
13. Cruise control with Adjustable Speed Limiter
14. Height- and reach-adjustable steering column
15. 1.5-litre bottle holder in door
16. Card/ticket holders in lower instrument panel

Audio technology

Radio/CD with 6" touchscreen, navigation and Ford SYNC 2 with Emergency Assistance*, USB and Bluetooth® connectivity with Voice Control, 6 speakers and rear-view camera. (Option)

Shown left and right: DAB radio/CD with Ford SYNC 2 and 6" Touchscreen colour multi-functional display.

*Ford Emergency Assistance operates in over 30 European countries. This feature works when paired with a compatible connected mobile phone that is with you when an airbag is deployed (excludes knee airbags) or a sensor that registers a crash deactivates the fuel pump. Text function and Emergency Assistance are not supported by all European languages. Compatible mobile phone required. See your local Ford website for latest information.

Note The Bluetooth® word mark and logos are owned by the Bluetooth SIG, Inc. and any use of such marks by Ford Motor Company Limited and its associated companies is under licence. Other trademarks and trade names are those of their respective owners.



Interior features

	Torneo Connect			Grand Torneo Connect		
	Style	Zetec	Titanium	Style	Zetec	Titanium
Design features						
Steering wheel – 4-spoke PU with black shells	●	●	-	●	●	-
Steering wheel – 4-spoke PU with aluminium shells	□	□	-	□	□	-
Steering wheel – 4-spoke leather-trimmed with aluminium shells	□	□	●	□	□	●
Steering column – Rake-and reach-adjustable	●	●	●	●	●	●
Door handle – Black	●	●	-	●	●	-
Door handle – Chrome finish	-	-	●	-	-	●
Gearshift knob – Leather-trimmed	-	-	●	-	-	●



Remote audio controls

Your hands on the wheel and your MP3 on the right track.
(Remote audio controls are standard)

The Bluetooth® word mark and logos are owned by the Bluetooth SIG, Inc. and any use of such marks by Ford Motor Company is under licence. Other trademarks and trade names are those of their respective owners.
Ford Emergency Assistance operates in over 30 European countries. This feature works when paired with a compatible connected mobile phone that is with you when an airbag is deployed (excludes knee airbags and rear inflatable safety belts, if equipped) or the fuel pump shut off switch is activated. See your local Ford website for latest information.

Interior features

	Torneo Connect			Grand Torneo Connect		
	Style	Zetec	Titanium	Style	Zetec	Titanium
Audio and communication systems						
DAB Radio, AUX connection for external music devices, Bluetooth® Hands-Free Phone and Voice Control System with USB/iPod® connectivity port and iPod® functionality, remote audio controls, two front speakers, two rear speakers. ICE Pack 2	●	-	-	●	-	-
DAB Radio/CD with DAB, 3.5" multi-functional display Includes message centre, four speakers (two front, two rear), MP3 capability, Ford SYNC (including Emergency Assistance**, Bluetooth® and Voice Control and audible text messaging, USB and Privacy mode). ICE Pack 6	○	●	●	○	●	●
DAB Radio/CD with DAB, 6" multi-functional display with Navigation, four (two front, two rear) speakers, MP3 capability and Ford SYNC 2, MFD TFT Touchscreen (including Emergency Assistance**, Bluetooth® and Voice Control and audible text messaging, USB and Privacy mode) includes Traffic Message Centre, and rear view camera ICE Pack 9	○	○	○	○	○	○
Climate control						
Pollen filter	●	●	●	●	●	●
Air conditioning – Manual control	○	●	●	○	●	
Air conditioning – Dual zone Electronic Automatic Temperature Control (DEATC)	-	○	○	-	○	○

● = Standard, ○ = Option, at extra cost, □ = Part of an option pack, at extra cost. ** Ford Emergency Assistance is an innovations SYNC feature that uses a Bluetooth®-paired and connected mobile phone to help vehicle occupants initiate a direct call to the local communications centre following a vehicle crash event involving an airbag deployment or fuel pump shut off. The feature operates in more than 40 European countries and regions.

Centre console with stowage bin including power point and AUX MP3 socket

Open centre console with 1 x 12 V socket, AUX connectivity, USB connectivity, USB connectivity with charging, 2 cup-holders and storage designed to accommodate an A4 folder. (Standard)



Interior features

	Tourneo Connect			Grand Tourneo Connect		
	Style	Zetec	Titanium	Style	Zetec	Titanium
Comfort and convenience						
Floor mats – Front	○	○	●	○	○	●
Rear mats	○	○	○	○	○	○
Trip/fuel computer	●	●	●	●	●	●
Ford Eco mode driver information system	–	●	●	–	●	●
Courtesy lights – Header mounted	●	–	–	●	–	–
Courtesy lights – Front dome light with two map lights	–	●	●	–	●	●
Courtesy lights – Rear overhead	●	●	●	●	●	●
Auto-dimming rear-view mirror	□	□	●	□	□	●
Dual front cup holders	●	●	●	●	●	●
MyKey®	○	○	○	○	○	○
Rear view camera – displays in SYNC screen	□	□	□	□	□	□
Rear view camera in rear view mirror (including Trailer Hitch Assist and front and rear parking sensors)	○	○	○	○	○	○
Power point socket – 12V (located in instrument panel)	□	●	●	□	●	●
Power point socket – 12V (located in front and rear of console)	●	●	●	●	●	●
Glovebox	●	●	●	●	●	●
Locking glovebox lid	–	○	○	–	○	○
Glovebox illumination	–	–	●	–	–	●
Instrument panel storage box	–	●	●	–	●	●
Rear seat centre armrest (Second row)	–	–	●	–	–	●
Full width front overhead shelf	●	●	●	●	●	●
Mid-vehicle overhead stowage (not available in combination with rear console, and not available with panoramic roof)	–	○	–	–	○	–
Overhead console – Rear seat (only available with Panorama roof). Must be ordered with delete 3rd row seats on Grand Tourneo Connect	–	○	○	–	○	○
Centre console	●	●	●	●	●	●
Driver's sunglasses holder	–	□	●	–	□	●
Windows – Electrically-operated front with driver one-touch lowering	●	●	–	●	●	–
Windows – Electrically-operated front with one-touch up/down and global opening/closing	–	–	●	–	–	●
Windows – Fixed 2nd row rear	●	–	–	●	–	–
Windows – Electrically-operated 2nd row (one-touch on Titanium)	□	●	●	□	●	●
Child observation mirror	–	□	●	–	□	●
Glovebox illumination	–	–	●	–	–	●
Smokers' Pack – Cigarette lighter and ashtray	○	○	○	○	○	○
Interior grab handles (front)	●	●	●	●	●	●

● = Standard, ○ = Option, at extra cost, □ = Part of an option pack, at extra cost. ** Ford Emergency Assistance is an innovations SYNC feature that uses a Bluetooth®-paired and connected mobile phone to help vehicle occupants initiate a direct call to the local communications centre following a vehicle crash event involving an airbag deployment or duel pump shut off. The feature operates in more than 40 European countries and regions.

Innovative stowage solutions

With both underfloor (in second row footwell) and overhead stowage capability and seats that can be removed, Tourneo Connect offers great ways to carry luggage items, no matter how large or small.





Interior features

	Tourneo Connect			Grand Tourneo Connect		
	Style	Zetec	Titanium	Style	Zetec	Titanium
Seats						
Driver's seat (4-way) (fore/aft + recline)	●	-	-	●	-	-
Driver's seat (8-way) (fore/aft + recline, height, lumbar)	○	●	●	○	●	●
Driver's seat – Rotary seat recline	●	●	●	●	●	●
Seat belt reminder system (driver and passenger)	●	●	●	●	●	●
Passengers seat – Flip/fold/tumble, fold flat seat function	●	●	-	●	●	-
Passenger seat (4-way) (fore/aft + recline)	●	●	●	●	●	●
Passenger lever recliner	●	●	●	●	●	●
Driver's seat – Map pocket	-	●	●	-	●	●
Passenger seat - Map pocket	-	-	●	-	-	●
Rear coat hook	●	●	●	●	●	●
Driver and Passenger heated front seats (with Dark interior trim only)	-	○	○	-	○	○
Rear seats – Second row 60/40 folding seats (fold/tumble/removeable in Tourneo, fold flat in Grand Tourneo)	●	●	●	●	●	●
Rear seats – Third row (7 seater)	-	-	-	●	●	●
Delete Third row seats	-	-	-	○	○	○
● = Standard, ○ = Option, at extra cost, □ = Part of an option pack, at extra cost. ** Ford Emergency Assistance is an innovations SYNC feature that uses a Bluetooth®-paired and connected mobile phone to help vehicle occupants initiate a direct call to the local communications centre following a vehicle crash event involving an airbag deployment or duel pump shut off. The feature operates in more than 40 European countries and regions.						



Folding seats

The seats in the Tourneo Connect take adaptability to a new level. Second and third row rear seats in Grand Tourneo fold flat, creating a myriad of passenger and load-carrying possibilities. Second row seats in Tourneo fold and tip to maximise luggage area and all rear seat backs tilt to optimise passenger comfort. And in the Style and Zetec series the front passenger seat can be folded forward to form a convenient flat surface or load-through area.

Stowage space

	Tourneo Connect			Grand Tourneo Connect		
	Style	Zetec	Titanium	Style	Zetec	Titanium
Loadspace						
Horizontal cargo net for the load compartment floor	-	●	●	-	●	●
Cargo tie down hooks (4)	●	●	●	●	●	●
Front overhead parcel shelf	●	●	●	●	●	●
Load compartment rubber mat	●	-	-	-	-	-
Load compartment carpet	-	●	●	●	●	●

● = Standard, ○ = Option, at extra cost, □ = Part of an option pack, at extra cost. ** Ford Emergency Assistance is an innovations SYNC feature that uses a Bluetooth®-paired and connected mobile phone to help vehicle occupants initiate a direct call to the local communications centre following a vehicle crash event involving an airbag deployment or duel pump shut off. The feature operates in more than 40 European countries and regions.

⁰Uses sensors.
¹Safety feature.
²Driver assistance feature.
*Towing capacity depends on engine and vehicle series, please refer to vehicle weight and load specifications.

Rear-view camera

Select reverse and the view from the rear-view camera is displayed automatically in the internal mirror. Marker lines overlaid on the camera image indicate where the vehicle is heading.

Tow bar, fixed

Subjected to rigorous testing to ensure the highest safety standards. (Option and accessory)

Traction Control¹⁾

If wheel slip is detected at low speed, this system can distribute torque to the wheel with most traction.

Trailer Sway Control¹⁾

When it detects trailer sway, the system is designed to reduce engine torque and apply the brakes to the appropriate wheel(s) to help maintain control. (Standard with Ford factory-fit tow bar)

Hill Start Assist²⁾

Designed to prevent you from rolling down a slope temporarily when you move your foot from the brake pedal to the accelerator. It works in forward and reverse gears, so is ideal for towing when pulling heavy items and equipment for outdoor pursuits. (Standard)

Electronic Stability Control (ESC)⁰¹⁾

ESC is designed to help you maintain control in unpredictable driving conditions. It senses when the vehicle is deviating from your chosen line and aims to keep you on track by automatically regulating engine output and braking to each of the wheels. (Standard)

Emergency Brake Assist⁰¹⁾

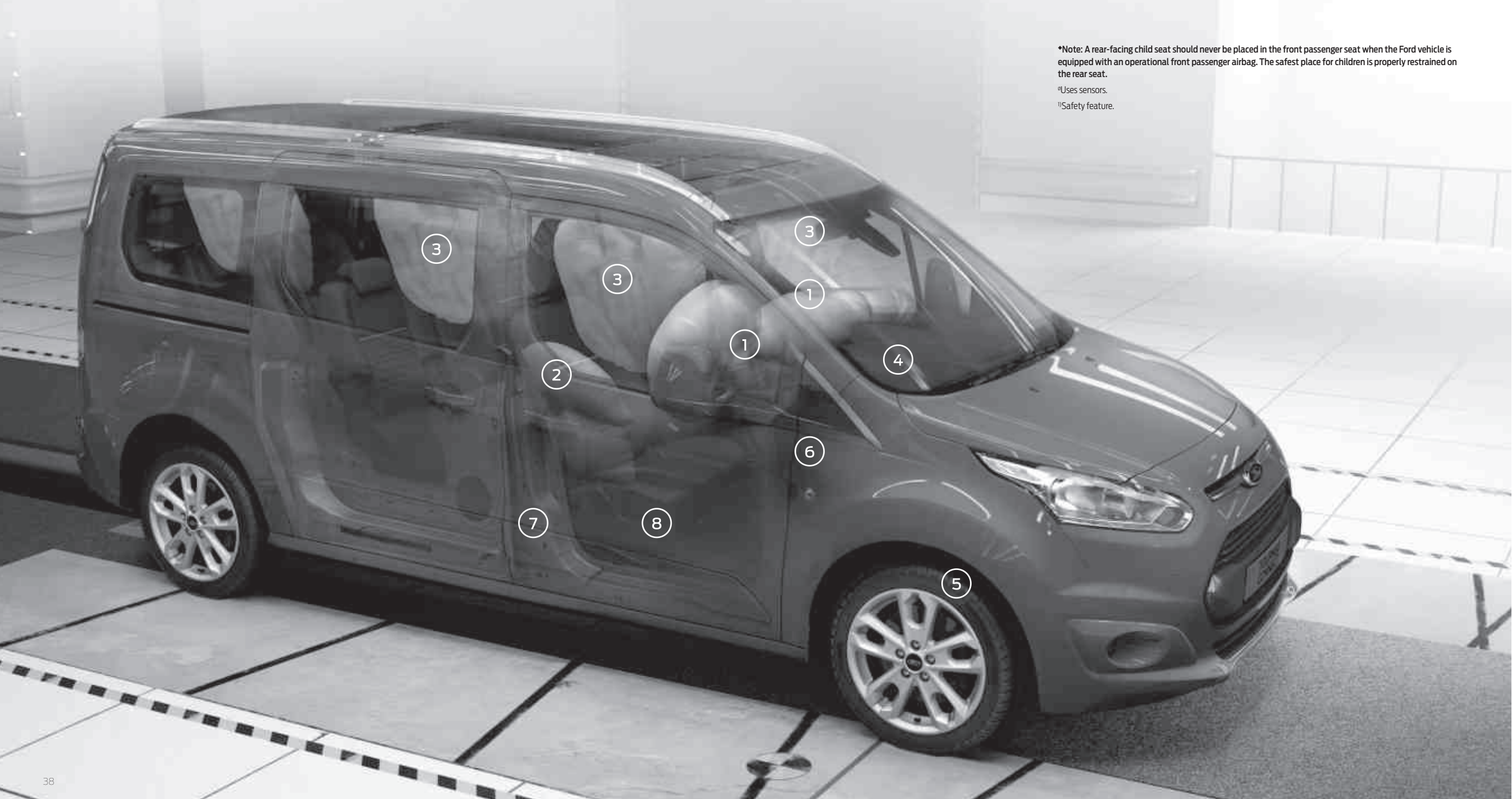
Senses an emergency braking situation and increases the pressure within the braking system to ensure maximum stopping power is used. (Standard)

Traffic Sign Recognition⁰⁾

Designed to automatically read standard format road-speed signs and display the last posted speed limit in the driver's instrument cluster. Also available with optional Satellite Navigation for enhanced traffic sign recognition. (Option)



Model shown is a Ford Grand Tourneo Connect Trend with Sport Pack (option).



*Note: A rear-facing child seat should never be placed in the front passenger seat when the Ford vehicle is equipped with an operational front passenger airbag. The safest place for children is properly restrained on the rear seat.

[¶]Uses sensors.

[†]Safety feature.

Intelligent Protection System[¶]

Ford's advanced IPS uses a range of sophisticated technologies designed to keep you protected, including an ultra-high strength steel safety cage, an anti-lock braking system with Emergency Brake Assist and front, side and curtain airbags.

The Ford Tourneo Connect IPS includes:

- 1. Driver and front passenger airbags[♦]
- 2. Driver and front passenger side impact airbags
- 3. Side curtain airbags for front and rear seats (including third row on 7-seater)
- 4. Collapsible steering column and pedals for optimised protection of driver's legs and feet
- 5. Electronic Stability Control with anti-lock brakes, electronic brake-force distribution and Emergency Brake Assist
- 6. Robust computer-optimised body structure with ultra-rigid safety cell and crumple zones
- 7. Pre-tensioners, load-limiting retractors and height-adjustable mounts on front seat belts
- 8. Anti-submarining seat bases

Safety equipment

	Torneo Connect			Grand Torneo Connect		
	Style	Zetec	Titanium	Style	Zetec	Titanium
Safety and driver assistance						
Active City Stop ¹⁾ (only available with SYNC)	○	○	●	○	○	●
Anti-lock braking system (ABS) with Traction Control ¹⁾	●	●	●	●	●	●
Emergency Brake Warning ¹⁾	●	●	●	●	●	●
Electronic Stability Control (ESC) ¹⁾	●	●	●	●	●	●
Trailer Sway Control (TSC) (effective when Ford towbar is fitted) ¹⁾	□	□	□	□	□	□
Emergency Brake Assist (EBA) ¹⁾	●	●	●	●	●	●
Cruise Control with Adjustable Speed Limit ²⁾	○	○	●	○	○	●
Hill Start Assist ²⁾	●	●	●	●	●	●
Lane Keeping Aid ²⁾	–	□	□	–	□	□
Driver Impairment monitor ²⁾	–	□	□	–	□	□
Traffic Sign Recognition ²⁾	–	□	□	–	□	□
Tyre Pressure Monitoring System (TPMS) ²⁾	●	●	●	●	●	●
Airbag – Driver's ¹⁾	●	●	●	●	●	●
Airbag – Front passenger's* ¹⁾	●	□	□	●	□	□
Airbag – Driver's side (thorax and pelvis) ¹⁾	●	●	●	●	●	●
Airbag – Passenger side (thorax and pelvis) ¹⁾	●	●	●	●	●	●
Airbags – Curtain first and second row ¹⁾	●	●	●	–	–	–
Airbags – Curtain first, second and third row ¹⁾	–	–	–	●	●	●
Seat belts – second /third row, inertia reel lap and diagonal ¹⁾	●	●	●	●	●	●

● = Standard, ○ = Optional, ¹⁾ Safety feature, ²⁾ Driver assistance.
*Note: A rear-facing child seat should never be placed in the front passenger seat when the Ford vehicle is equipped with an operational front passenger's airbag.

Ford Blind Spot Information System⁰²⁾†

As another vehicle – a car, van or lorry – enters your blind spot, it is designed to alert you with a discreet warning light built into the driver's and passenger's door mirrors.



Security equipment

	Torneo Connect			Grand Torneo Connect		
	Style	Zetec	Titanium	Style	Zetec	Titanium
Security						
Speed Limiter – 56 mph	○	○	○	○	○	○
Speed Limiter – 62 mph	○	○	○	○	○	○
Speed Limiter – 70 mph	○	○	○	○	○	○
Security						
Door auto re-locking	●	●	●	●	●	●
Power door deadlocks	●	●	●	●	●	●
Remote key + plain key	●	●	–	●	●	–
Two remote keys (no plain key included as part of this pack)	○	○	●	○	○	●
Fleet Key	○	–	–	○	–	–
Childproof rear door locks	●	●	●	●	●	●
Security – Passive Anti-Theft System (PATS)	●	●	●	●	●	●
Perimeter anti-theft alarm	○	○	○	○	○	○
Thatcham Category 1 alarm	○	○	○	○	○	○

● = Standard, ○ = Optional, ¹⁾ Safety feature, ²⁾ Driver assistance.

Active City Stop®

Designed to help reduce the likelihood or consequences of your vehicle colliding with the vehicle in front in slow-moving traffic. Applies emergency braking if it is detected that a collision is likely. (Standard on Titanium)



Lane Keeping Alert and Lane Keeping Aid®

It only takes a momentary slip in concentration to drift out of your lane when driving on the highway. Lane Keeping Alert is designed to recognise when you approach the road markings without using the indicator, and alerts you with vibrations through the steering wheel. Lane Keeping Aid is designed to apply a steering torque back towards the lane you were in to help you recognise that corrective action is required. (Option)



⁰⁾Uses sensors.
¹⁾Designed to operate at speeds above 10 km/h.
²⁾Driver assistance feature.

Mechanical features

	Tourneo Connect			Grand Tourneo Connect		
	Style	Zetec	Titanium	Style	Zetec	Titanium
Brakes						
Power 4 wheel disc	●	●	●	●	●	●
Fuel tank						
Ford Easy-Fuel capless refueling system	●	●	●	●	●	●
Fuel tank 60-litres	●	●	●	●	●	●
Engine						
Fuel economy pack - Includes Auto Start Stop (standard on 1.0 petrol, 100PS / 120PS Powershift autos and 120PS manual. Option on 100PS manual. Includes Active Grille Shutter (on manual only) and Heavy duty battery.	● / - / ○	● / ● / ○	- / ● / ○	- / - / ○	- / ● / ○	- / ● / -
Steering						
Rake and reach adjustable steering wheel	●	●	●	●	●	●
Electronic Power Assisted Steering (EPAS)	●	●	●	●	●	●
Suspension and body						
Rear – Twistbeam	●	●	●	●	●	●
Base payload pack	●	●	●	-	-	-
Max payload upgrade pack	-	-	-	●	●	●

● = Standard, ○ = Optional.



See round corners.

Adaptive cornering fog lights

Designed to provide additional illumination of the area to the side of the vehicle when cornering, making night-time parking and turning safer. (Option on Zetec, standard on Titanium)

Fuel and performance

The fuel economy figures quoted in the table below are achieved by following strict EU governed test procedures and are specifically designed to enable customers to compare vehicles from all manufacturers on a like-for-like basis. Fuel consumption is directly affected by the length of the journey; number of passengers and amount of luggage carried; individual driving style; road and traffic conditions; weather conditions; vehicle age, mileage, condition and standard of maintenance; use of vehicle features such as air conditioning; and any modifications to the vehicle such as the addition of a roof rack. Your fuel economy will vary based on these and other factors and, for these reasons, many drivers may not achieve the EU fuel economy figures (below) in day-to-day driving, although the vehicle is technically capable of doing so.

	Euro Stage	Transmission	Maximum Power PS (kW)	Torque Nm	CO ₂ emissions (g/km) ⁹⁰	Fuel consumption mpg (L/100km) ⁹⁰			Performance ⁹
						Urban	Extra Urban	Combined	Max. speed (mph)
Tourneo Connect									
1.0 EcoBoost (100 PS (74 kW)) with standard Auto-Start-Stop	VI	6 speed Manual	100 PS (74 kW)	170	129	44.1/6.4	55.4/5.1	50.4/5.6	103
1.5 TDCi (100 PS (74 kW))	VI	5-speed Manual	100 PS (74 kW)	250	124	52.3/5.4	64.2/4.4	58.9/4.8	101
1.5 TDCi (100 PS (74 kW)) (with optional Auto-Start-Stop)	VI	5-speed Manual	100 PS (74 kW)	250	115	60.1/4.7	65.7/4.3	64.2/4.4	101
1.5 TDCi (120 PS (88 kW)) (with standard Auto-Start-Stop)	VI	6-speed Manual	120 PS (88 kW)	270	119	57.6/4.9	64.2/4.4	61.4/4.6	106
1.5 TDCi (120 PS (88 kW)) (with standard Auto-Start-Stop)	VI	6-speed Automatic	120 PS (88 kW)	300	129	52.3/5.4	60.1/4.7	56.6/5.0	104
Grand Tourneo Connect									
1.5 TDCi (100 PS (74 kW))	VI	5-speed Manual	100 PS (74 kW)	250	124	52.3/ 5.4	64.2/4.4	58.9/4.8	101
1.5 TDCi (100 PS (74 kW)) (with optional Auto-Start-Stop)	VI	5-speed Manual	100 PS (74 kW)	250	115	60.1/4.7	65.7/4.3	64.2/4.4	101
1.5 TDCi (120 PS (88 kW)) (with standard Auto-Start-Stop)	VI	6-speed Manual	120 PS (88 kW)	270	119	57.6/4.9	64.2/4.4	61.4/4.6	106
1.5 TDCi (120 PS (88 kW)) (with standard Auto-Start-Stop)	VI	6-speed Automatic	120 PS (88 kW)	300	129	52.3/5.4	60.1/4.7	56.6/5.0	104

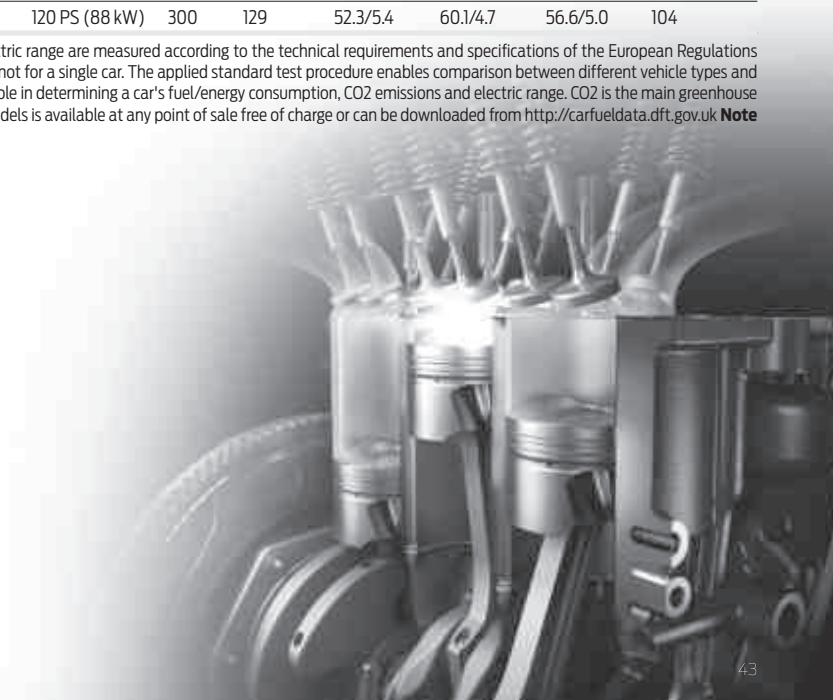
9Ford test figures. Note: All Euro stage engines are stage VI. 00The declared Fuel/Energy Consumptions, CO2 emissions and electric range are measured according to the technical requirements and specifications of the European Regulations (EC) 715/2007 and (EC) 692/2008 as last amended. Fuel consumption and CO2 emissions are specified for a vehicle variant and not for a single car. The applied standard test procedure enables comparison between different vehicle types and different manufacturers. In addition to the fuel efficiency of a car, driving behaviour as well as other non-technical factors play a role in determining a car's fuel/energy consumption, CO2 emissions and electric range. CO2 is the main greenhouse gas responsible for global warming. A guide on fuel economy and CO2 emissions which contains data for all new passenger car models is available at any point of sale free of charge or can be downloaded from <http://carfueldata.dft.gov.uk> **Note** All engines are Euro Stage VI emissions. All petrol engines are equipped with a catalytic converter.

50.4mpg*



Ford EcoBoost petrol technology gives you the power of a bigger engine with the fuel economy and emissions of a smaller one. The latest ultra-efficient 1.0-litre EcoBoost engine produces an impressive 100 PS, yet it delivers a combined fuel consumption of just 50.4 mpg and CO₂ emissions of only 129 g/km.

*1.0 EcoBoost 100 PS with standard Auto-Start-Stop.



Weights and loads

	Transmission	Style	Zetec	Titanium	Kerbweight (kg)*	Gross Vehicle Mass (kg)	Gross Train Mass (12%) (kg)	Max. Towable Mass (braked) (12%) (kg)	Max. Towable Mass (unbraked) (kg)
Tourneo Connect									
1.0 EcoBoost (100 PS (74 kW))	6-speed Manual	●	●	–	1419	2000	3145	1200	735
1.5 TDCi (100 PS (74 kW))	5-speed Manual	●	●	●	1450	2040	3145	1200	750
1.5 TDCi (100 PS (74 kW)) with optional Auto-Start-Stop	5-speed Manual	●	●	●	1460	2040	3145	1200	750
1.5 TDCi (100 PS (74 kW)) (with Auto-Start-Stop)*	6-speed Automatic	●	●	●	TBC	TBC	TBC	TBC	TBC
1.5 TDCi (120 PS (88 kW)) with standard Auto-Start-Stop	6-speed Manual	–	●	●	1449	2040	3200	1200	750
1.5 TDCi (120 PS (88 kW)) with MPS6 Powershift transmission with standard Auto-Start-Stop system	6-speed Automatic	–	●	●	1478	2065	3145	1200	750
Tourneo Connect Grand									
1.5 TDCi (100 PS (74 kW))	5-speed Manual	●	●	–	1480	2270	3145	1200	750
1.5 TDCi (100 PS (74 kW)) with optional Auto-Start-Stop system	5-speed Manual	●	●	–	1490	2270	3145	1200	750
1.5 TDCi (100 PS (74 kW)) (with Auto-Start-Stop)*	6-speed Automatic	●	●	●	TBC	TBC	TBC	TBC	TBC
1.5 TDCi (120 PS (88 kW)) with standard Auto-Start-Stop system	6-speed Manual	–	●	●	1483	2270	3145	1200	750
1.5 TDCi (120 PS (88 kW)) with MPS6 Powershift transmission with standard Auto-Start-Stop system	6-speed Automatic	–	●	●	1505	2270	3145	1180	750

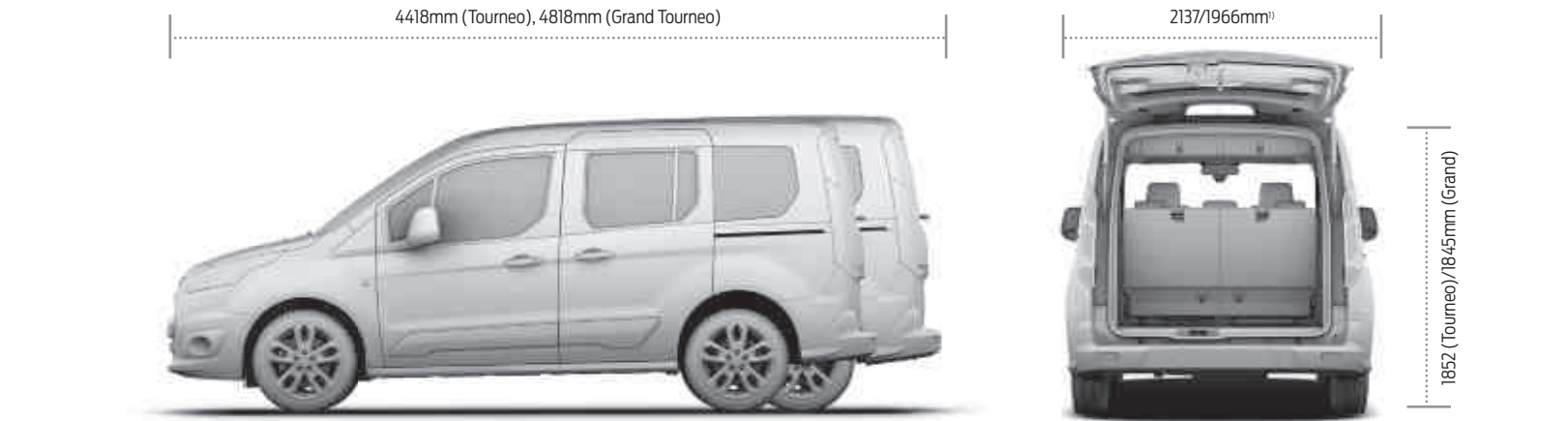
ØPayload = Gross vehicle mass, less kerb mass. All kerb masses quoted in this brochure are subject to manufacturing tolerances and are for Base models with minimum equipment. Trend and Titanium models will have greater kerb masses and, therefore, lower payloads due to the increased amount of standard equipment. Any additional options specified on the vehicle will reduce the payload accordingly. uRepresents the lightest kerbweight assuming no driver (industry standard 75 kg) full fluid levels and 90% fuel levels, subject to manufacturing tolerances and options, etc., fitted. Note All engines are fitted with a standard vDPF (vaporiser Diesel Particulate Filter (vDPF)). * This variant is available to order from July 2016
TBC = Data available in July 2016

Dimensions

	Tourneo Connect	Grand Tourneo Connect 5-seat	Grand Tourneo Connect 7-seat
A Overall length	4418	4818	4818
B Overall width with mirrors/with folded mirrors/without mirrors	2137/1966/1835	2137/1966/1835	2137/1966/1835
C Overall height	1852	1845	1840
D Side door entry width	612	839	839
I Loadspace width between wheel arches	1192	1149	1149
K Loadspace width	1477	1477	1477
M Loadspace floor to roof	1245	1234	1072
H Loadspace length 2 seat mode	1828	2179	2179
I Loadspace length 5 seat mode	913	1305	1264
I Loadspace length 7 seat mode	–	–	450
Loadspace capacity (litres) ‡			
K Loadspace capacity 2 seat mode	2410	2761	2620
K Loadspace capacity 5 seat mode	1029	1529	1287
K Loadspace capacity 7 seat mode (minimum/maximum)	–	–	322
Turning circle (m)			

Kerb to kerb

All dimensions (shown in mm) are subject to manufacturing tolerances and refer to minimum specification models and do not include additional equipment. These illustrations are for guidance only. Dimensions may vary dependent on the model and equipment fitted.



¹⁾ Mirrors out/folded

Enhanced versatility

Thule®* attachments

Choose from a wide variety of roof boxes and bike carriers. (Accessory)

Roof crossbars, for roof rails

Aerodynamic-shaped aluminium profiles, for all attachments such as roof boxes, bike carriers and ski racks. (Accessory)

Tow bar, fixed or detachable

Subjected to rigorous testing to ensure the highest safety standards. Towing capacity is up to 1,200 kg*. (Option and accessory)

Luggage compartment anti-slip mat

Durable mat, designed to keep the luggage compartment clean and tidy, ideal for transporting wet or dirty items (available as accessory for all 5-seater variants).

+Item covered by third party supplier's warranty, please see back cover for details.
*Towing capacity depends on engine and vehicle series, please refer to vehicle weight and load specifications.

For more accessories for your Ford Tourneo Connect visit www.ford-accessories.co.uk
For a range of Ford branded items – from clothing to lifestyle products and model cars – visit www.fordlifestylecollection.com



Sport styling kit

Highlights include 17" alloy wheels, additional skid plates for the front and rear, plus many more features. Please refer to exterior specifications for details. (Option)

ClimAir®* wind deflectors

Reduces wind turbulence and noise, allowing you a more enjoyable drive with the front windows down, even during light rain and whilst on the move. (Accessory)

Mudflaps

Contoured mudflaps help to keep your Ford Tourneo Connect clean by reducing road spray and stone chips. Available as sets for front and rear. (Option and accessory)

Rubber floor mats

Rubber floor mats are tailor-made to fit your Ford perfectly and protect against dirt and damp. (Accessory)

Colour and trim

Model	Style	Zetec	Zetec	Titanium	Titanium
	Standard	Standard	Optional	Standard	Optional
Seat facing trim and colour	Traxon in Charcoal Black	Route in Charcoal Black	Route in Medium Stone	Chicane in Charcoal Black	Chicane in Medium Stone
Seat bolster trim and colour	Max in Charcoal Black	Max in Charcoal Black	Max in Medium Stone	Malt in Charcoal Black	Malt in Medium Stone
Door trim and colour	PP in Charcoal Black	PP in Charcoal Black	PP in Charcoal Black	Max in Charcoal Black	Max in Charcoal Black
Centre stack bezels/Door handle deco strips	Pegasus/Black	Phoenix Silver/Radiant Silver	Phoenix Silver/Radiant Silver	Nebula/Radiant Silver	Nebula/Radiant Silver
Upper/lower instrument panel	Charcoal Black/Charcoal Black	Charcoal Black/Charcoal Black	Charcoal Black/Medium Stone	Charcoal Black/Charcoal Black	Charcoal Black/Medium Stone
Standard body colours					
Frozen White	●	●	●	●	●
Blazer Blue	●	●	●	●	●
Race Red	●	●	●	●	●
Premium body colours*					
Moondust Silver	○	○	○	○	○
Shadow Black	○	○	○	○	○
Deep Impact Blue	○	○	○	○	○
Magnetic Grey	○	○	○	○	○
Exclusive body colours*					
Solar	○	○	○	○	○
Tectonic Silver	○	○	○	○	○
Metalicious (from July 2016)	○	○	○	○	○

● = Standard, ○ = Optional *Premium and Exclusive body colours are optional at extra cost.



12-year perforation warranty

The Tourneo Connect owes its durable exterior to an advanced multi-stage painting process. From the wax-injected steel body sections to the hard-wearing top coat, new materials and application processes ensure it will retain its good looks for many years to come.

The Ford Tourneo Connect is covered by the Ford Corrosion Protection Warranty for 12 years from the date of first registration. Subject to terms and conditions.

Bodystyle:

Series:

Engine:

Transmission:

Colour:

Trim:

Wheels:

Audio:

Options:

Option Packs:

Accessories:

Finance:

Choose

Specify your new car right down to the wheels, audio, options and accessories then visit your Ford dealer.

You can specify your new car online using the Ford Configurator. It lets you instantly see what your car will look like – inside and out – from multiple angles. And a tally of your choices and their prices helps you keep to your budget. Visit www.ford.co.uk/ConfigureyourCar

Finance

When it comes to financing your car, our size and expertise means we’re well placed to provide you with a wide range of finance products.

Ford Credit provides a range of finance products for your car whether you are a private or business user.

Ford Lease specialises in contract hire and leasing and provides an alternative range of finance plans which can be tailored to suit your business. Business users only.

For more information about our finance products visit www.ford.co.uk

Drive

When you drive away in your new car, we’re with you all the way. Ford has the largest authorised service network in the UK to help you keep your car in the best condition.

And should your new Ford ever require accident repair, a Ford Accident Repair Centre is the best place to get your car back to its pre-accident condition and on the road as quickly as possible.

Contact

Ford Credit Customer Services 0345 712 5490

Ford Lease Customer Services 0344 600 1405

Calls to 0344 and 0345 numbers are charged at the same rate as standard 01 or 02 geographic numbers, and are included in any telephone or mobile package that offers free landline calls.

To configure your Ford online visit www.ford.co.uk/ConfigureyourCar
To look at finance for your Ford visit www.fordcredit.co.uk/BuyingAndProtectingYourFord
Business users visit www.ford.co.uk/FordFleet



Insurance Groups

	Style	Zetec	Titanium
Tourneo			
1.0 EcoBoost (100PS (74kW))	4E	6E	–
1.5 TDCi(100PS (74kW))	6E	7E	5E
1.5 TDCi(120PS (88kW))	–	10E	9E
1.5 TDCi(120PS (88kW)) MPS6 Powershift	–	10E	9E
Grand Tourneo			
1.5 TDCi(100PS (74kW))	6E	7E	–
1.5 TDCi(120PS (88kW))	–	10E	9E
1.5 TDCi(120PS (88kW)) MPS6 Powershift	–	10E	9E

E = Exceeds security requirement for model concerned and group rating has been reduced. Insurance ratings are issued by the Association of British Insurers and are shown above on the new 1-50 rating scales.

Illustrations, descriptions and specifications. This catalogue was correct at the time of going to print. However, Ford policy is one of continuous product development. The right is reserved to change specifications, colours and prices of the models and items illustrated and described in this publication at any time. For the latest details always consult your Ford Dealer. **Optional equipment.** Throughout this publication, wherever a feature is described as being an ‘Option’ or ‘Option Fitment/Pack’ etc, you should assume that it will be at extra cost to the base vehicle, unless specifically stated to the contrary. All models and colour combinations are subject to availability. **Note.** Some images portrayed are of a pre-production model and/or are computer generated, therefore, the design/features on the final version of the vehicle may differ in various respects. In addition, some of the features shown on the vehicles may be optional. **Note.** This brochure contains both original Ford accessories as well as a range of products from our suppliers. ♦The identified accessories are carefully selected third party supplier branded accessories which do not come with a Ford warranty but are covered by the third party supplier’s own warranty, the details of which can be obtained from your Ford Dealer. **Note.** The Bluetooth® word mark and logos are owned by the Bluetooth SIG, Inc. and any use of such marks by Ford Motor Company is under licence. The iPod word mark and logos are the property of Apple Inc. Other trademarks and trade names are those of their respective owners. **Note.** Some driver assistance features and safety features described in this brochure are designed to function using sensors, whose performance may be affected under certain weather or environmental conditions.

The Government fuel figures do not express or imply any guarantee of the fuel consumption of any particular vehicle. The vehicles themselves have not been tested and there are inevitably differences between individual vehicles of the same model. In addition, a vehicle may incorporate particular modifications. Furthermore, the driver’s style and road and traffic conditions, as well as the extent to which the vehicle has been driven and the standard of maintenance, will affect its fuel consumption. **Insurance groups** are only as recommended by the Association of British Insurers. You should always consult your insurance adviser for confirmation.



Ford and BP – working together to reduce fuel consumption and emissions.



Ford One Call

In the unlikely event that your Ford Dealer can’t help you or if you need to speak to us directly, call 0203 564 4444

Ford Rental - local service nationwide

Car and Van rental from our latest model range. Contact your local Ford Dealer for more information

Ford Motability

Call our Ford Motability team on 0345 6040019

Finance

Ford Credit Customer Services 0345 712 5490
Ford Lease Customer Services 0344 600 1405

Ford Warranty and Servicing Plans

	All Tourneo models
3-year/100,000 mls* Ford Warranty	●
1-year/unlimited mls* Ford Assistance Roadside Cover (Europe)	●
3-year/100,000 mls * Paint Warranty	●
12-year/unlimited mls Perforation Warranty	●
● = Standard, ○ = Optional, at extra cost *From the date of first registration. Subject to terms and conditions.	

Published by Ford Motor Company Limited, Brentwood, Essex, England. Registered in England No. 235446.

FA 1591/4
BJN 204831. FoE H61E.
PN 677501/0416/GBR en

January 2016.
© Ford Motor Company Limited.

