



New SANTA FE





We have passion for progress.

The “can-do” spirit is at the heart of Hyundai’s heritage. It’s the attitude of progressing, no matter what. From humble beginnings, this vision has driven us to seek new challenges, encapsulated since our founding in the name ‘Hyundai’ – meaning ‘modern times’.

It’s the persistent curiosity for what lies ahead. Of always chasing the next. What was once a man’s desire for better is today the ethos of an entire company. As our founder said: “How does one know it’s impossible if one hasn’t tried it?”

Progress doesn’t happen by chance. We’re always pushing the borders of the possible, building tomorrow’s technology today, and powering the future with an ever-evolving range of zero-emission engines, seamless in-car connectivity and more.

We’ve come a long way. And we won’t stop here.

Power, poise, and purpose.

The New SANTA FE brings a new level of refined power and poise to driving, with advanced safety systems, a completely re-designed body, plus new and more efficient powertrains giving you the drive of your life.



Car shown: New SANTA FE Hybrid Ultimate in Magnetic Grey Metallic.

With more power, control, and fewer emissions, the New SANTA FE SUV delivers sophisticated performance on every level. From the inside out, passenger comfort is matched by safety and convenience, with SmartSense safety systems that adapt and adjust to road conditions and personal preferences. Intuitive controls to make driving easier, more relaxed, and safer, no matter the journey. Improved load space, superior handling and refined power means the New SANTA FE takes everything in its stride, and the newly sculpted body means it does it all in style. For the challenges ahead, the New SANTA FE is purpose personified.



Car shown: left-hand drive New SANTA FE Hybrid Ultimate in Magnetic Grey Metallic.



Make a clean getaway.

The New SANTA FE delivers efficiency and flair with lower emissions, new Hybrid powertrains, adaptive terrain suspension and automatic transmission throughout the range.



New SANTA FE Ultimate. Car shown not to UK Specification.

With a choice of flexible powertrains and drive transmissions, the New SANTA FE brings clean, responsive power to your drive. The new 1.6T GDi engine comes in two formats, both delivering efficient power via automatic transmission. The Plug-in Hybrid has a larger 13.8kWh battery and is available in four-wheel drive only. For great towing capabilities a new diesel powertrain, coupled with a brand new DCT transmission, is available.

Signature styling.

Fine lines and daring design give the New SANTA FE a bold and distinctive presence on the road.



Car shown: New SANTA FE Premium.

The powerful front of the New SANTA FE features an imposing grille and sculpted bumper for a muscular silhouette, and boasts T-shaped light clusters for all-round visibility and increased light throw. Redesigned alloy wheels add a sense of proportion and poise, and the new rear bumper completes the look of the New SANTA FE with high visibility T-form rear lights for an overall impression of balanced power and sublime styling.



Car shown: New SANTA FE Ultimate in Taiga Brown Pearl.



Ventilated front seats standard across all trim levels.



Floating high console with shift-by-wire transmission standard across all trim levels. Aluminum finish standard with Luxury pack.



Quilted Nappa leather seat available on Ultimate trim with Luxury Pack.

The inside story.

High specification driver controls and information systems in a spacious interior.



Full 12.3" TFT cluster standard on Ultimate trim.

The interior of the New SANTA FE has been reimagined for today's driver. Increased visibility from a lowered dashboard gives a clear view of the immediate surrounds, and a stunningly designed centre console includes the new 10.25" touchscreen. With access to BlueLink, Apple Car Play/Android Auto and Bluetooth, you have the choice in how you connect to your vehicle. A new 12.3" instrument cluster provides you with performance information. Mood lighting adds an atmospheric touch to truly personalise your interior space. To drive forward or in reverse, simply use the shift by wire buttons. This new layout adds convenience and extra space to the interior.

Control through connectivity.

Take charge of a bigger world with personalised control.



The New SANTA FE's internal command systems take connectivity to another level. With voice control and personalised driver profiles, the New SANTA FE recognizes your preferences and automatically adjusts connectivity and comfort for individual control and command. BlueLink and Bluetooth® tightly sync your phone to in-car smart systems for hands-on or remote control, and the wireless charging pad means your phone is always topped up. With intuitive audio and navigation control from the 10.25" touchscreen display, driving and entertainment systems are clearly laid out before you for immediate access and instant control.



Wireless phone charging pad standard across all trim levels.



KRELL premium audio standard across all trim levels.



eCall standard across all trim levels.



10.25" touchscreen audio visual navigation standard across all trim levels, also used as the surround view monitor on Ultimate trim.





Street Smart for Total Safety.

When it comes to safety, forewarned is forearmed. With Smartsense safety systems, risks are recognised and autonomous action taken before hazards arise.



Lane Follow Assist (LFA): LFA helps prevent accidental lane departure and keeps your vehicle safely centered within the lane. Using a forward camera to recognise the intended lane, LFA will automatically provide corrective steering input to help maintain the centre path. This not only detects road lines but also the road edge.



Forward Collision Avoidance Assist - Junction Turning (FCA-JX): Smart sensors and cameras at the front of the New SANTA FE link to smart systems to warn of vehicles, cyclists or pedestrians in your path and alert drivers to oncoming vehicles when turning across lanes, automatically applying the brakes when necessary.



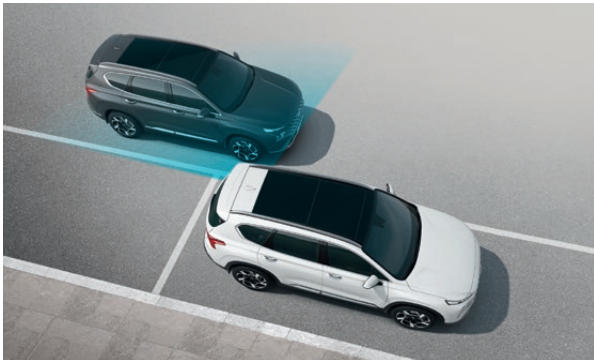
Highway Driving Assist (HDA): For additional safety, Highway Driving Assist keeps the New SANTA FE at your pre-set speed and maintains road position in your lane. HDA monitors the distance to the vehicles ahead, reducing speed automatically when the gap closes. When the safe distance is restored, HDA resumes the pre-set cruising speed.



Remote Smart Parking Assist (RSPA): Parking in a tight space is simple with RSPA. Using the smart key fob controls, the New SANTA FE can be driven or reversed into and out of narrow bays from up to 4m away — at the touch of a button.



Rear Cross-traffic Collision Avoidance Assist (RCCA): Sensors detect vehicles approaching from both sides when the New SANTA FE is in reverse, avoiding collisions in congested or reduced visibility environments such as car parks.



Reverse Parking Collision - Avoidance Assist (PCA): Using the rear camera and ultrasonic sensors whilst reversing at low speeds, a warning is issued on detecting the possibility of a collision with a pedestrian or obstacle. If necessary, brakes are applied.

The New SANTA FE protects its passengers from risks all round. With 360° awareness of traffic, pedestrians, and road conditions, the New SANTA FE feeds multiple streams of information to the driver with audible alarms and kinetic adjustments where necessary — without distracting the driver. Taking care of your safety, vigilant systems allow you to focus on the road ahead as they monitor the space around you. From Forward Collision Avoidance Assist, to protect you from hazards in front, to rear-facing sensors that alert you to pedestrians or objects behind, the New SANTA FE comes with technology to make every journey safer and more enjoyable.

The language of colours.

From Glacier White to Abyss Black, choose the colour that calls to you.



Taiga Brown Pearl (No-cost option)



Glacier White Pearl*



Lagoon Blue Pearl*



Typhoon Silver Metallic*



Forest Grey Metallic*



Magnetic Grey Metallic*



Abyss Black Pearl*



Creamy White Pearl*

Dimensions*.



1,710 mm



2,765 mm
4,785 mm



1,900 mm (Excluding Door Mirrors)

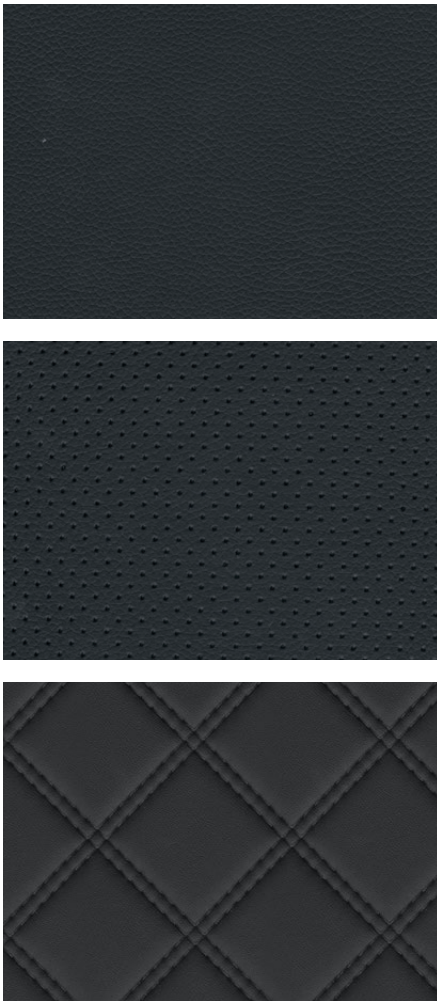
*Additional cost option.

All cars shown: New SANTA FE Hybrid Ultimate.

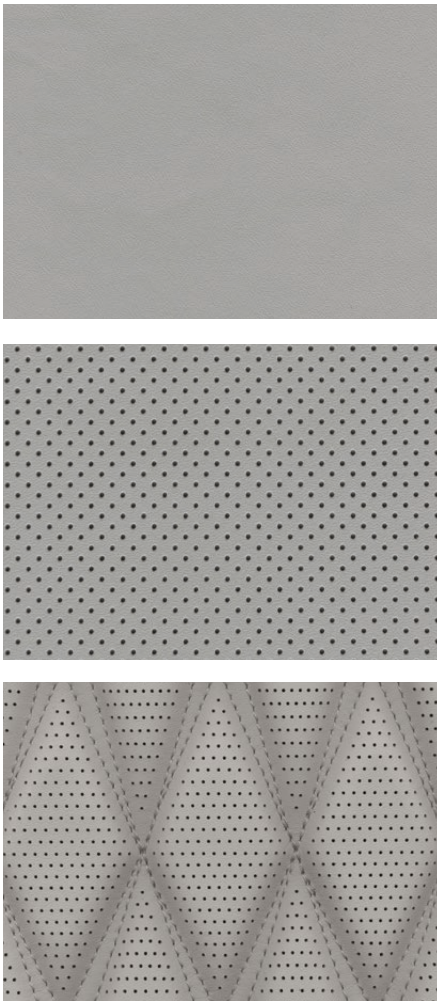
Interior colour combinations.

Tone and texture personalised for comfort.

Black One-tone – Leather Seat
Available on all trim levels.



Light Grey - Two-tone Nappa Leather Seat
Available on Luxury Pack only.



Specifications shown in this brochure are based upon the latest available information at the time of publication. The colours and finishes reproduced in this brochure are subject to the limitations of digital display and may vary from the actual colour and paint finish.

In line with our policy of continual product improvement, Hyundai Motor UK Ltd reserves the right to make changes at any time, without notice, to prices, colours, materials, designs, shapes, specifications and models, and to discontinue items. For the latest details, please consult your Hyundai dealer.



Your local Hyundai dealer:
www.hyundai.co.uk/dealer-locator
Customer enquiries: 0800 981 981



Hyundai Motor UK Ltd,
Ground Floor Birchwood Building,
The Office Park, Springfield Drive,
Leatherhead, KT22 7LP
T: 0800 981 981 www.hyundai.co.uk

Car shown: New SANTA FE Ultimate in Taiga Brown Pearl.
HB0012 03/21