



i10







# We have a passion for progress.

The “can-do” spirit is at the heart of Hyundai’s heritage. It’s the attitude of progressing, no matter what. From humble beginnings, this vision has driven us to seek new challenges, encapsulated since our founding in the name ‘Hyundai’ – meaning ‘modern times’.

It’s the persistent curiosity for what lies ahead. Of always chasing the next. What was once a man’s desire for better is today the ethos of an entire company. As our founder said: “How does one know it’s impossible if one hasn’t tried it?”

Progress doesn’t happen by chance. We’re always pushing the borders of the possible, building tomorrow’s technology today, and powering the future with an ever-evolving range of zero-emission engines, seamless in-car connectivity and more.

We’ve come a long way. And we won’t stop here. Next awaits.



Cars shown i10 N Line in Polar White Solid and i10 Premium in Aqua Turquoise Metallic. Optional two-tone roof available on selected models.



# Go ahead. Make a big statement.

Designed for the modern world, the i10 may seem like a small car, but it makes a big statement.



Image shown i10 Premium in Aqua Turquoise Metallic.

With seamless connectivity and the latest Hyundai Smart Sense active safety features, the i10 showcases advanced technology throughout, with the i10 N Line featuring track-inspired enhancements.



Car shown i10 Premium in Aqua Turquoise Metallic with optional two-tone roof, available on selected models.





# Go big and beautiful.

Travel in style with the ride that gets you where you want to go comfortably and safely – and with all eyes on you.



**Cascading grille:** The expressive shape of the cascading grille and LED Daytime Running Lights emphasises the confident character of the i10.



**Two-tone roof:** Selected i10 models feature eye-catching two-tone roof options.



**Wheels:** 16" alloy wheels\* add sporting poise and a confident finish to the style of the i10.

The i10 is built to be agile, with sleek, stylish features designed to turn heads. Strikingly sculpted from bonnet to boot with a cascading grille, stunning alloy wheels and LED Daytime Running Lights\*, as well as a two-tone roof on selected models and a front end that'll make jaws drop on your journey. Big on character and big on charisma, the flowing lines of the i10 are made to move.

\*16" alloy wheels standard on Premium and N Line models. 15" alloy wheels standard on SE Connect models. LED Daytime Running Lights standard on Premium and N Line models only.



# Stand out in a big way.

With dynamic styling and performance design from the chassis up, the i10 N Line sets a new standard for a car of this class. Taking inspiration from the N Line racing heritage, signature features make the i10 N Line stand out from the crowd to make a big impression.



16" N Line alloy wheels.

Design and styling take a front seat in the i10 N Line with performance enhancements throughout. From the 1.0 T-GDi powertrain delivering 100 PS on the road, N Line badging, unique front grille and the optional Phantom Black two-tone roof, the i10 N Line has a dynamic character all of its own. Exclusive design features include bumpers and LED daytime running lights to emphasise the i10 N Line's sporty attitude. Subtle pin stripe detail and exclusive alloy wheels complement the performance-enhancing diffuser and skid-plate for a sleek silhouette that underlines the racing pedigree of the N Line marque.



Car shown i10 N Line in Polar White Solid with optional two-tone roof, available on selected models.





# Big on flexibility, big on technology, big on style.

Advanced comfort and convenience in a compact car. Enjoy your time behind the wheel and stay in touch with the rest of the world with multimedia connectivity and an intuitive in-car interface.



8" Touchscreen Navigation makes multi-media access easy. Not available on SE.



In case of emergency, eCall directs first responders to you - fast.



Mobile wireless charging brings convenience to the cabin. Part of the optional Tech Pack available on Premium and N Line.



Honeycomb dash design adds 3D elegance to selected models. Shale Grey interior shown, available on Premium.

Inside the i10, you'll find an attractive, comfortable and surprisingly spacious cabin with the latest technology at your fingertips. Everything is designed with flexibility and comfort in mind, leaving you and your passengers to sit back and enjoy the ride in safety and in style. For a small car, there's plenty of 'big car' tech, such as a heated steering wheel and heated seats on Premium trim.



# Get connected to the bigger picture.

The i10 offers class-leading connectivity, with a range of advanced technology functions fully integrated into the 8" colour touchscreen\*.



8" Multi-media display features Rear View Camera and smartphone connectivity – available on SE Connect and above. Car shown i10 Premium with Shale Grey interior.

The i10 is a pioneer in its class. An 8" touchscreen display, seamless mobile integration with Apple CarPlay™ and Android Auto™ (with wireless functionality on selected models) to sync your smart phone and mirror its functionality, and a rear-view camera to guide you into those tight spaces come as standard on the SE Connect and above. Advanced Bluelink® telematics and wireless mobile phone charging are available on the i10 Premium and i10 N Line with the optional Hyundai Tech Pack.



Car shown i10 Premium in Aqua Turquoise Metallic with optional two-tone roof, available on selected models.





# Sitting pretty with N Line styling.

With signature styling and enhanced interior accents, N Line detail shines inside and out.



Image shown i10 N Line. Climate control standard on selected models of i10 Premium and N Line.

Red accent trims and fine N Line detail in the interior are inspired by motorsport, with the N Line branded steering wheel, gear shift lever and metal pedals a nod to the design of race car interiors. Sports seats give support for performance driving precision and the honeycomb dash inserts and black roof lining add to the feeling of stylish comfort. Packed with the latest Hyundai Smart Sense safety technology and connectivity equipment, the i10 N Line comes with an 8" touchscreen display including Apple CarPlay™ and Android Auto™ as standard. Selected N Line models also come with Climate Control.



# Even more of a good thing.

With precision designed inner space, 5 seats and one of the biggest boots in its class, the i10 has room to spare. Smart design at every level has focused on making the car fit your lifestyle, not the other way round.



The i10 boasts one of the largest boots in its class, with a capacity of up to 252 litres.

The i10 interior has been designed with space in mind. There's plenty of room to stretch your legs and five people can sit in comfort, even for rear passengers. The 252 litres of boot space expands to over 1,000 litres when the back seats are down. With one-handed seat folding and a 60/40 seat configuration to make even more of the space available, the i10 is practical and delightful.



Car shown i10 Premium in Aqua Turquoise Metallic with Shale Grey interior and optional two-tone roof.



# Making a Big impression.

The i10 has been engineered for poise and performance, with refined design and inner space, but it's the little things that add up to make a bold statement. Choose from a range of Hyundai Genuine Accessories to make the i10 all your own with inspired extras for that personal touch. Your style, your way.



Carpet mats.



Carpet mats with N Line Logo.



All-weather mats.



Boot liner.



Entry guards.



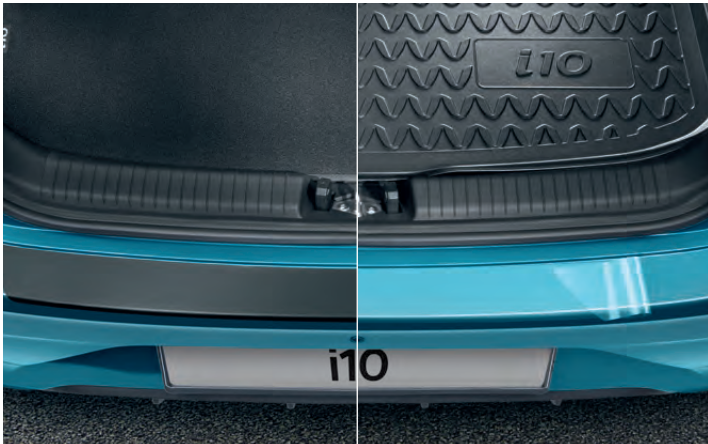
Racing stripes.



Speed stripe decals.



Side door mouldings and mudguards.



Rear bumper protection in black foil and transparent foil.





# Hyundai Smart Sense.

Taking safety to the next level.



**Lane Keeping Assist:** The Lane Keeping Assist (LKA) uses the front multi-function camera to monitor the lines of the road. In case of an unintended lane departure, it warns you and can apply counter steering torque to guide the car back to the lane.



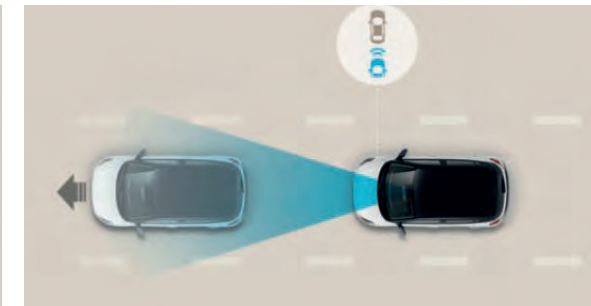
**High Beam Assist (HBA):** Less stress and maximum visibility. HBA not only detects oncoming vehicles but also vehicles in the same lane ahead and switches to low-beam as appropriate.



**Driver Attention Warning (DAW):** When a pattern of fatigue or distraction is identified, the system gets your attention with an alert and pop-up message suggesting a break.



**Forward Collision-Avoidance Assist (FCA):** Sensing the road ahead with the multi-function camera, FCA warns you and then automatically brakes when it detects sudden braking by a car ahead. Includes pedestrian detection.



**Leading Vehicle Departure Alert (LVDA):** This clever feature for city driving alerts the driver when the vehicle in front departs from an idle state, like at a stoplight or in a traffic jam.



**Intelligent Speed Limit Warning (ISLW)\*:** Recognises road speed signs and displays the speed limit in real time in both the navigation system display and instrument cluster.

With a vast array of Smart Sense technology on board as standard, automated sensors assist awareness and make safe driving even easier. Lane Keep Assist and Lane Departure Warnings make sure you stay where you're supposed to, with Intelligent Speed Limit Warning\* and Forward Collision Warnings and Driver Attention Alerts reading the road for you. eCall is also on board as standard - this feature automatically calls emergency services if you're in an accident and the airbags deploy. You can also push the SOS button for emergency assistance 24/7, 365 days a year.

\*Only available on the i10 Premium and N Line with the optional Tech Pack.



# Connecting the i10 to your lifestyle.

Bluelink® Connected Car Services bring seamless connectivity directly into the i10, with online voice recognition and a wide range of features to make your drive more convenient and enjoyable. Be in tune with your ride with Find My Car, remote door lock & unlock, and destination send to car.



We're changing the way we interact with cars and technology – with Bluelink® from Hyundai leading the way. Available as part of the optional Tech Pack for N Line and Premium models, Bluelink® gives seamless connectivity in-car and in-app. A free five-year subscription to Hyundai's LIVE Services lets you make the most of Bluelink® Connected Car Services, with real-time traffic information giving you the fastest route for the conditions, so you save time on the road and know precisely when you're going to arrive.



Car shown i10 Premium in Aqua Turquoise Metallic with optional two-tone roof, available on selected models.









SE offers the following features as standard:

- 5 Seats
- 14" Steel Wheels with Wheel Covers
- Air Conditioning - Manual
- Bluetooth® Connectivity
- Cruise Control with Speed Limiter
- DAB Radio
- Daytime Running Lights – Halogen
- Driver Attention Alert (DAA)
- eCall
- Electrically Adjustable Door Mirrors
- Electric Windows – Front and Rear
- Forward Collision Avoidance Assist (FCA)
- Forward Collision Warning System (FCWS)
- High Beam Assist (HBA)
- Hill-start Assist Control (HAC)
- Lane Departure Warning System with Lane Keep Assist (LKAS)
- Leather Wrapped Steering Wheel and Gear Knob
- Steering Wheel Audio, Phone and Cruise Controls
- Tyre Repair Kit



SE Connect offers the following features over SE:

- 2 Rear Speakers
- 8" Touchscreen Display Audio with Smart Device Integration & DAB
- 15" Alloy Wheels
- Bluetooth® Connectivity with Voice Recognition
- Phone Connection - Android Auto™ (with wireless functionality for selected models)
- Phone Connection - Apple CarPlay™ (with wireless functionality for selected models)
- Rear View Camera with Dynamic Guidelines





Premium offers the following features over SE Connect:

- 16" Alloy Wheels
- Choice of two interior colour pack options
- Climate Control (available on selected models)
- Daytime Running Lights - LED
- Front Fog Lights
- Front Seats - Heated
- Headlights - Bi-Function Projection Headlamps
- Heated Steering Wheel
- Privacy Glass - Rear Windows and Tailgate

#### Customer options

- Two-tone Roof
- Tech Pack
  - Bluelink® (Telematics)
  - Intelligent Speed Limit Warming (ISLW)
  - LIVE Services & DAB Navigation with Smart Device Integration
  - Wireless Charging Pad

Car shown i10 Premium in Dragon Red Pearl.



N Line offers the following features over SE Connect:

- 1.0 T-GDi powertrain
- 16" N Line Alloy Wheels
- Daytime Running Lights - LED
- Front Fog Lights
- Halogen Bi-function Lights
- N Line Design Package
- N Line Interior Design Accents
- Rear Lights - LED Combination

#### Customer options

- Two-tone Roof
- Tech Pack
  - Bluelink® (Telematics)
  - Intelligent Speed Limit Warming (ISLW)
  - LIVE Services & DAB Navigation with Smart Device Integration
  - Wireless Charging Pad

Car shown i10 N Line in Polar White Solid.





Mangrove Green Pearl (No-cost option)



Dragon Red Pearl\*



Intense Blue Pearl\*



Aurora Grey Pearl\*



Phantom Black Pearl\*



Polar White Solid\*



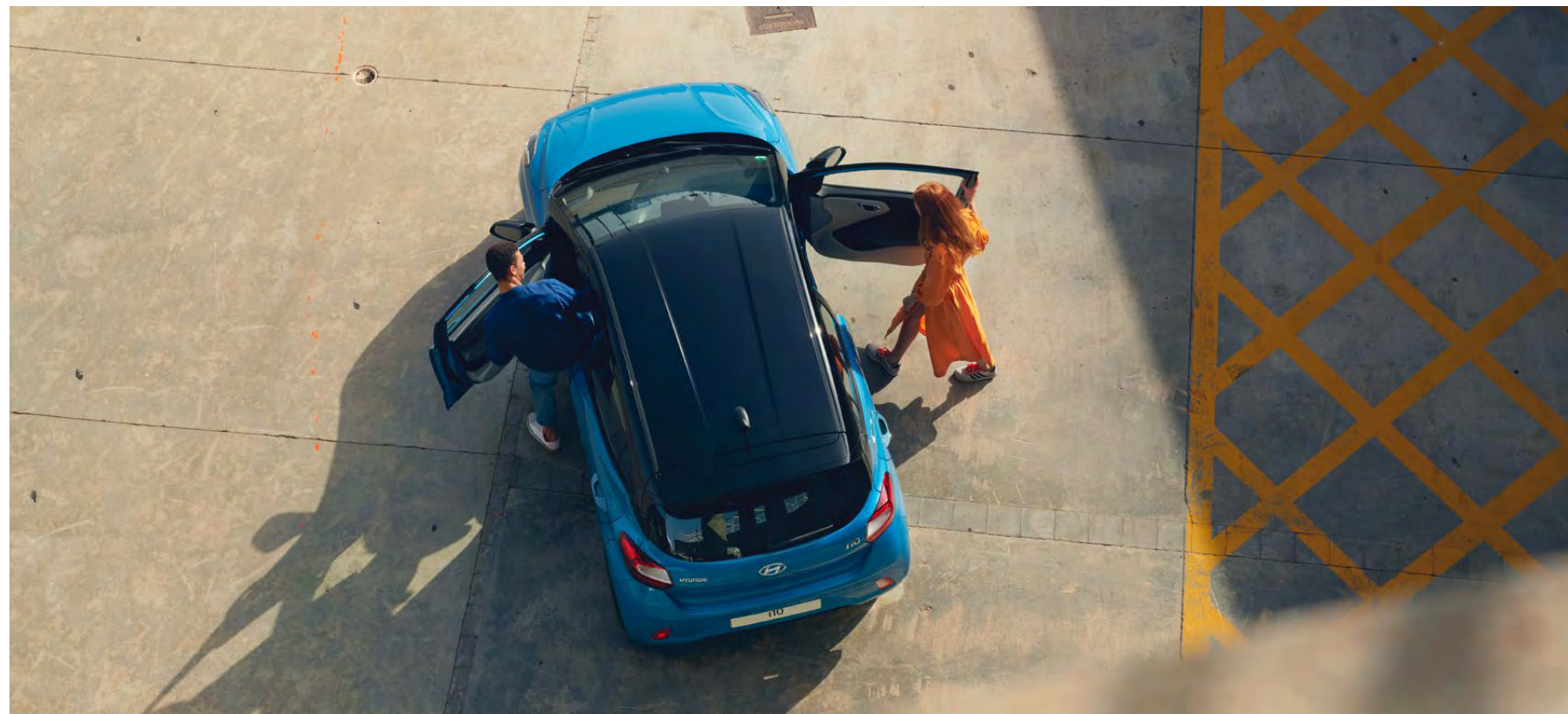
Sleek Silver Metallic\*



Aqua Turquoise Metallic\* (Not available on N Line)



Elemental Brass Metallic\* (Not available on N Line)



Car shown i10 Premium in Aqua Turquoise Metallic with optional two-tone roof, available on selected models.

## Black Two-tone roof

Available on Premium and N Line with these exterior colours\*:



Mangrove Green Pearl



Dragon Red Pearl



Intense Blue Pearl



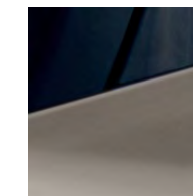
Polar White Solid



Sleek Silver Metallic



Aqua Turquoise Metallic (Not available on N Line)



Elemental Brass Metallic (Not available on N Line)



# Interior trims and cloth options

Choose from a range of sumptuously styled interior colour options.

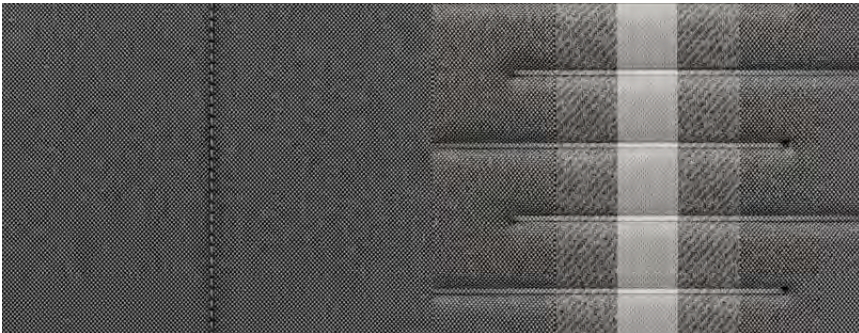
**Obsidian Black White Stripes**  
Standard on SE/SE Connect trims.



**White Interior pack**  
Available on selected models in Premium trim.



**Shale Grey**  
Available on Premium trim.



**Black with red stitching**  
Standard on N Line trim.



SE Connect interior shown.



## Dimensions\*



\*Car shown i10 Premium in Aqua Turquoise Metallic with optional two-tone roof, available on selected models.





# Hyundai Finance

Hyundai Finance provides a range of products to make the purchase of your Hyundai even more accessible. To meet your requirements, our plans are simple but offer you the same quality and flexibility as your new Hyundai. Applying for a finance plan through your local Hyundai dealer is easy and they will support you in choosing the right plan for your needs.

As a customer your satisfaction is at the heart of our business, and whilst you are able to manage your account online, we are only a phone call away should you require any help or assistance. We offer two main products to assist your car purchase:

## CONDITIONAL SALE

Conditional Sale is a simple and traditional way to finance your car over a fixed period. You decide to fund the entire purchase price or put down a deposit and as your interest rate is fixed you'll pay the same amount each month. After all repayments have been made you'll own the car.

## PERSONAL CONTRACT PURCHASE (PCP)

Personal Contract Purchase could make it easier for you to get behind the wheel of your Hyundai, it may also help you to change your car on a more regular basis.

The way it works is simple – you decide what level of deposit to pay. From nil, up to a maximum of 50%. You also decide your repayment period (typically 25, 37 or 49 months) and set your anticipated annual mileage. This will determine your optional final payment.

You will then make fixed monthly repayments based on the outstanding balance and interest, less your optional final payment, and at the end of your monthly repayment period you will have three choices: return, retain or renew.

RETURN: you can hand the car back to us with nothing further to pay (subject to fair wear and tear, and/or excess mileage charges may apply).

RETAIN: you can pay the optional final payment and the car is yours.

RENEW: you can part exchange the car, using any equity over and above the optional final payment as deposit on your next car (equity is anticipated, but this cannot be guaranteed).



# 5 Year Unlimited Mileage Warranty

At Hyundai we continually invest in the latest manufacturing technology designed to give you years of enjoyable motoring. Our trust in our products is backed up by our comprehensive aftercare package to ensure you have the best possible experience as a Hyundai owner.

Only Hyundai-trained technicians will carry out any warranty work, and we'll also check for any software updates to keep your car running smoothly. You can be sure that we'll only use Hyundai Genuine Parts - tested and approved by us.

## 5 YEAR UNLIMITED MILEAGE WARRANTY

Peace of mind comes as standard with our manufacturer-backed, unlimited mileage, 5 year warranty\* which protects your Hyundai against manufacturing defects and is fully transferable to the next owner.

## HYUNDAI ROADSIDE ASSISTANCE

24 hour roadside assistance should you ever need it, anywhere in the UK or Channel Islands, with Onward Travel included to get you home if your car can't be fixed at the roadside†.

## 5 ANNUAL VEHICLE HEALTH CHECKS

Free, expert visual inspections by your Hyundai dealer on key areas of your car, to help spot any potential problems early.

## ADDITIONAL AFTERCARE

A 12 year anti-perforation warranty against perforation of the bodywork, from the inside of the panel outwards.

\* Vehicles used for taxi, daily rental hire and reward or light commercial vehicles are limited to 100,000 miles. Terms and conditions apply. Visit [hyundai.co.uk/warranty](https://hyundai.co.uk/warranty) for further details.

† Complimentary Hyundai Roadside Assistance automatically covers your Hyundai for 12 months from the date of first registration and can be re-activated annually upon adhering to the recommended service schedule at an Authorised Hyundai Dealer. Visit [hyundai.co.uk/assistance](https://hyundai.co.uk/assistance) for further details.





# Motability Plans

The Motability plan will enable some of you to purchase a Hyundai at a preferential rate. If you receive the Higher Rate Mobility Component of the Disability Living Allowance, you're entitled to access this excellent scheme. In recognition of your requirements, many Hyundai models can be ordered on the 3 year Contract Hire Scheme.

You'll benefit from advantageous features like power steering, height-adjustable driver's seat and automatic gearbox, which all come as standard.

Most of our dealers are Motability Accredited, so just contact them and they'll be happy to help. If you'd like to read about the scheme in more depth, simply visit [www.motability.co.uk](http://www.motability.co.uk)



# Hyundai Service Plans

For the school runs and the shopping trips.  
The multi-storeys and the motorways.  
Holidays, the commute, the appointment you simply can't be late for.  
This is your driving life.

Hyundai Service Plans are a convenient way to plan ahead, with a bespoke plan, tailored for your individual circumstances.  
So you're simply free to live your driving life knowing your servicing costs are already covered.

With payment options to suit you and no interest or credit checks.  
Just the certainty that your Hyundai is always in great hands.

For more information visit [hyundai.co.uk/owning](http://hyundai.co.uk/owning), contact your local dealer or call us on **0800 981 981**.



# Hyundai Click To Buy™

Hyundai Click To Buy™ is the smarter, easier way to purchase a new car. Innovation has always been part of our DNA, and now we've streamlined the buying process itself. With a few simple clicks you can trade-in your old car, configure your new Hyundai, arrange finance and pay a deposit – all from your computer, tablet or smartphone device.

For added flexibility you can pay in cash, and the delivery arrangements couldn't be simpler. You can choose to get it delivered at your home at a cost, or collect it in the evening or weekend from your local dealer.

You'll be admiring your Hyundai in double-quick time thanks to the latest example of our new-thinking philosophy.

# MyHyundai

MyHyundai is a complimentary and exclusive owners' club with a variety of unique benefits that'll make your ownership experience even more enjoyable.

As well as amazing offers that range from incredible getaways to indulgent gifts, you'll also be able to set your own alerts and preferences, while storing all your car's details in one, easily-accessible place.



# Staying In Touch

We're committed to offering you the very best. That means, as well as delivering impressive cars, we'll also deliver helpful advice and service, every step of the way. For more information visit [hyundai.co.uk/owning](http://hyundai.co.uk/owning), call us on 0800 981 981 or contact your local dealer.



Keep up to date with our news on our Facebook page at [www.facebook.com/hyundaiuk](http://www.facebook.com/hyundaiuk)



See all our latest tweets at [www.twitter.com/hyundai\\_uk](http://www.twitter.com/hyundai_uk)

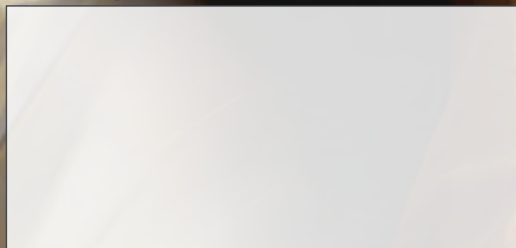


View our latest videos at [www.youtube.com/user/hyundaimotoruk](http://www.youtube.com/user/hyundaimotoruk)



Specifications shown in this brochure are based upon the latest available information at the time of publication. In line with our policy of continual product improvement, Hyundai Motor UK Ltd reserves the right to make changes at any time, without notice, to prices, colours, materials, designs, shapes, specifications and models, and to discontinue items. For the latest details, please consult your Hyundai dealer.

Your local Hyundai dealer:



Customer enquiries: 0800 981 981



Hyundai Motor UK Ltd  
Ground Floor, Birchwood Building, The Office Park,  
Springfield Drive, Leatherhead, KT22 7LP  
T: 0800 981 981 [www.hyundai.co.uk](http://www.hyundai.co.uk)

Front and rear cover car shown i10 Premium in  
Aqua Turquoise Metallic with optional two-tone roof.  
HB0010 12/20