

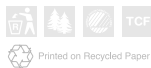
The Honda Accord Tourer



These specification details do not apply to any particular product which is supplied or offered for sale. The manufacturers reserve the right to vary their specifications, including colours, with or without notice and at such times in such manner as they think fit. Major as well as minor changes may be involved. Every effort, however, is made to ensure the accuracy of the particulars contained in this brochure. This publication shall not constitute in any circumstances whatsoever an offer by the Company to any person. All sales are made by the Distributor or Dealer concerned subject to and with the benefit of the standard Conditions of Sale and Warranty given by the Distributor or Dealer, copies of which may be obtained from him on request. This publicity material applies to the UK only Trade Descriptions Act (1968). Whilst efforts are made to ensure specification accuracy, brochures are prepared and printed several months in advance of distribution and consequently cannot always immediately reflect either changes in specification or in some isolated cases the provision of a particular feature. Customers are always advised to discuss specification details with the supplying Dealer especially if your model selection is dependent upon one of the features advertised.

Honda (UK) - Cars

470 London Road, Slough, Berkshire, SL3 8QY
Honda Contact Centre - Telephone: 0845 200 8000
www.honda.co.uk



Printed on Recycled Paper



“In a race competing for a split second, a tyre length on the finish line will decide whether you are a winner or loser. If you understand that, you cannot disregard the smallest improvement”

Soichiro Honda (1906 - 1991)



At Honda, belief is everything.

It's the belief that we have the power to change things.

To make the ordinary, extraordinary.

To question the status quo.

To take a boundary and extend it.

Our engineers and designers believed they could create an estate car with the perfect blend of performance and practicality.

We had the expertise from forty years on the racetrack.

And we believed in our philosophy – the power of dreams.

So judge for yourself: the Accord Tourer is the culmination of everything we have learnt so far.

By the look of it that's quite a lot.

CONTENTS	Exterior Design	3
	Interior Design	9
	Performance	23
	Safety	33
	Attention to Detail	39
	Product Details	45
	- Model Line Up	49
	- Satellite Navigation	53
	- Specification Summary	55
	Options	59
	Glossary	71
	Environment	73
	Finance/Aftercare	75
	Colour Options	77



?What inspires you

Honda engineers are inspired by the most unexpected things. The design of the Tourer was inspired by the falcon, stretched aerodynamically in full flight. Might not be as strange as it sounds. It's why the long rear quarter window of the Tourer tapers to create such a powerful, poised silhouette. It explains why our designers took so much care perfecting the Tourer's distinctive headlights, using the latest luminescent technology

to give a pin sharp view of the road. Why the Tourer's grille is distinctly V shaped, helping the air flow more smoothly, boosting the aerodynamics and engine cooling. And why the Tourer looks so sporty when it's really a versatile estate car with the biggest load capacity in its class. Sometimes a little inspiration can go a long way.

?How do you measure perfection

If you're a Honda engineer, a fraction of a millimetre could make the difference between something working ok or working perfectly. And that's the way we looked at every single part when we designed the new Tourer.

It's why our designers put so much thought into the precise shape of the chrome door handles. To make sure they give a grip that is absolutely right. And that's why we took so much care perfecting the smooth and uninterrupted character line from front to back, to give the Tourer a real

sense of purpose. This even involved moving the indicators to the door mirrors because that is the most visible place they can be, improving safety.

At Honda, we believe that taking care over the small, makes a huge difference to the big. Drive the new Tourer and you'll see what we mean.



?What if all you had to leave behind were your preconceptions

When we designed the Tourer we re-wrote the rule book. The one that says estate cars are just practical, end of story. We wanted to create a real driver's car that just happened to have a huge capacity. So you'll immediately notice that the sporty aerodynamic lines give a look that is more executive car than family estate. Yet they don't compromise on the load space. Far from it: the Tourer has the biggest capacity in its class. And though it's an estate, the Tourer has been finely tuned to give the handling you would expect from a sports saloon. The Tourer chassis has

specially engineered rear suspension to give a smooth, comfortable drive with outstanding handling, yet allowing a flat load capacity. The bodyshell is packed with strong, lightweight, sound absorbing materials to minimise vibration and enhance the driving experience. Even the chrome exhaust looks sleek and sporty. Erase any previous images you had of estate cars.







Model shown is 2.4 Executive

?What does the perfect driving experience feel like

Relaxed, powerful, exhilarating, calm. And what helps to give you that feeling is your driving environment.

The interior of the Tourer has inspiration and logic in equal measure. Leaving you to focus on the important bit. The road ahead.

The simple idea of putting the stereo and cruise controls on the wheel, so they're at your fingertips.

Satellite Navigation to get you safely to your destination anywhere in Europe, with easy touch screen operation. Because only orienteers should have to unfold a map.

A tilt and telescopic steering wheel, so you can achieve your perfect driving position.

And 3D blackout dials that automatically welcome you into the car when you open the door.

And that's all before you've even turned the ignition.



?What's your personal preference

Seat reclined? Or completely upright?

Our preferences are what make us individual. The beauty of the new Tourer is that it celebrates individuality. We've added a host of clever touches that allow you to express yourself.

So adjust the dual zone climate control that lets you and your passenger set your preferred temperatures.

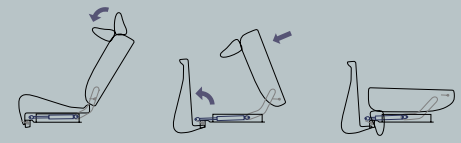
Move the seat a few millimetres forward at the touch of a button* and heat it up if you're cold. Alter the armrest position slightly to make yourself that little bit more comfortable. From the luxurious materials we've used to the carefully considered layout, you know that this is one journey both you and your passengers are going to really enjoy. Even the seat adapts itself to your individual shape. We have worked alongside Schukra, experts in seat technology, to research and develop the perfect driving seat. The result is a seat that moulds itself to your frame, pulling your pelvis into the seat for full spinal support and perfect posture.

* only available on Executive models



Model shown does not include luggage net

Here's how it works: with one hand, pull the seat back lever and watch as the head restraints flip forward. The seat base rises to a vertical position and the seat back folds totally flat, complete with the integrated seatbelts. Lifting the backrest replaces the seat base in one single-handed action. Maximum space, with minimum effort.



1. Rear seat side lock is released, headrest automatically folds down.
2. Seat cushion pops up as the seat back is pushed down.
3. The seat back forms a flat floor, with the headrest concealed beneath it.

Model shown is 2.4 Executive with black interior

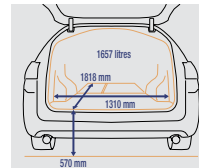


?Ever fallen out with a car seat

Introducing the Tourer's Intelligent Seat System. Never has putting the seats up or down been so effortless. Just one flick of a lever and it's done.

?Need more space

No problem. The Tourer has a huge load capacity, the biggest in its class, in fact. To create it, we started from the inside. Our engineers deliberately developed a unique rear trailing arm double wishbone suspension that is smaller and more compact. This allowed the Tourer's cargo floor to be lower, wider and longer. So much so, the luggage space is exceptionally tall (865mm to be precise). Even with all the seats upright you have 626 litres of storage space.



Luggage nets standard on Executive models

?Where's the spare

There isn't one. Having created an extra, lockable storage space under the boot floor*, it didn't make sense to fill it up again with a heavy spare wheel. Instead, we've fitted our easy-to-use Instant Mobility System (IMS). Reducing weight means improved fuel efficiency. Plus, it takes up less space. So how does it work? Simple. Connect the air compressor to the car's 12V supply, then pump sealant into the tyre, and reinflate the tyre. Drive for 10 minutes, check the pressure again, then head for the nearest tyre repair centre. Best of all, it's fast and easy to use. After all, wouldn't you rather be back on the road than waiting beside it?



*50 litres of additional storage space.



IMS kit shown. Space saver tyre available as an option.

?Wish you had more hands

It would be useful wouldn't it? Six would be about right. Two for the kids. One for answering your mobile. Two for the shopping. One to open the boot. Introducing the power operated tailgate.

Just press the key fob and it opens or closes in seconds. Or if you'd rather, you can close it with a switch on the tailgate. Whichever option you choose, you'll appreciate the gentle sound of the electric soft shut as it closes.

At Honda we always keep your safety in mind. Which is why the tailgate is also fitted with sensors. If there is an obstruction between the tailgate and the car, the tailgate reverses direction.







?Know anything about engines

We've tinkered a bit. At Honda, we've always used the racetrack as a training ground for our engineers. It challenges them to think in new ways. We've tested every type of engine under every type of condition over the years. And the hard work's paid off.

An unbeaten number of World Superbike victories. Six consecutive F1 constructor's championships. Our own four stroke engine powerboat race series.

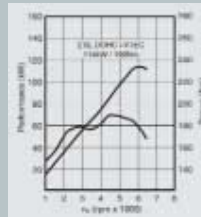
So you could say we know a thing or two about engine technology. In fact we're the largest engine manufacturer in the world. And everything we've learnt has gone into the new Accord.

Two all new i-VTEC engines, combining both VTEC (variable valve timing and lift, electronic control) and VTC (variable timing control) technology work to deliver power at the exact moment when you need it, but with remarkable fuel-efficiency.

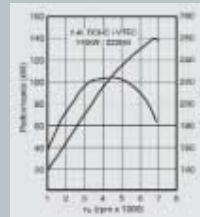
Perhaps tinkering was a bit of an understatement.

The new Accord's 2.0 litre i-VTEC engine produces 155 PS, (114kW) with peak torque of 190 Nm at 4,500 rpm while returning 34.0 mpg (combined cycle).

The 2.4 litre engine delivers 190 PS (140kW) and maximum torque of 223 Nm. Both engines comply with EU regulations due to be enforced in 2005, with CO₂ emissions among the lowest in their class.



2.0-litre engine performance and torque



2.4-litre engine performance and torque

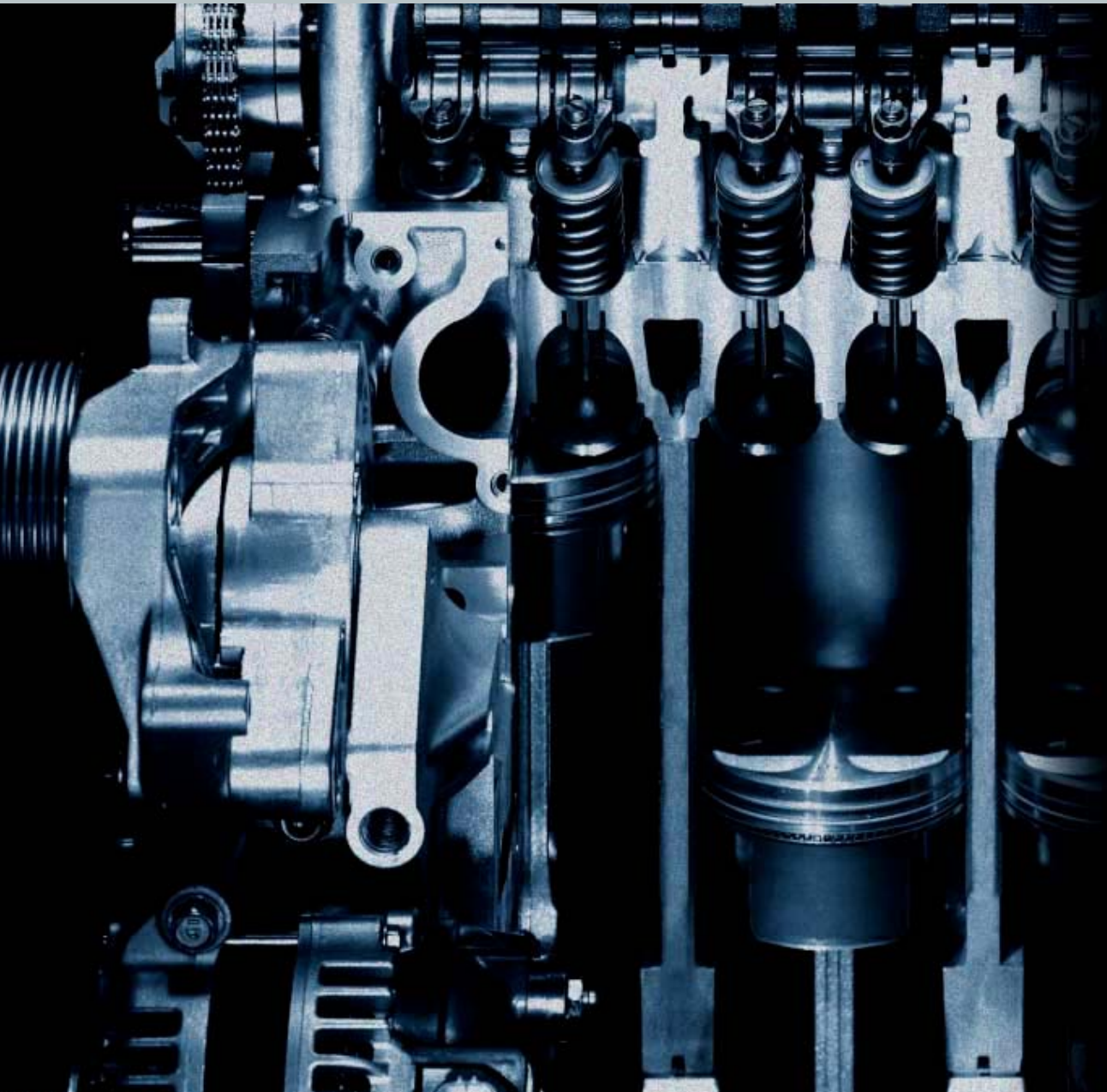
Our i-VTEC technology has allowed us to create an engine that adapts perfectly to your driving requirements.

Cruising? The engine draws an economical mix of fuel and air to maintain power and an effortless cruising speed.

Accelerating? The lightweight intake valves open for longer, giving instant power.

The Accord's new 5 and 6 speed manual gearboxes feel light and fluid, with ratios that achieve maximum fuel efficiency and acceleration.

While the new 5 speed automatic gearbox allows you to select the ratio best suited to your driving style and conditions.



These engines prove just how far we can go when we push the boundaries of technology. It's the same attitude that led us to develop ASIMO (Advanced Step in Innovative Mobility), the world's first robot to perform tasks from the simple, to what those in the robotics world previously thought impossible. ASIMO can walk, interpret the postures and gestures of humans and can even recognise their faces and address them by name. So why do we do it? We enjoy it. And because one day, robots based on our technology could help make life easier for real people. That's reason enough for us.



The Accord is just as innovative. Take the accelerator pedal. Instead of hinging it at the top, we've hinged it at the bottom and made it larger. So not only is it easier and more comfortable to use, the response you get is more instantaneous, giving you a more involved and exciting drive.

Yes, the Accord is undeniably a driver's car.



Organ accelerator pedal



Twin Ring Motegi race track

At Honda, the racetrack is our laboratory.

Where better to test our cars? To push them to the limit and see how they perform under pressure. The Grand Prix circuits are the most demanding. But not quite demanding enough for Honda. We wanted the ultimate Grand Prix testing ground, so we built two of our own. One at Suzuka, a classic F1 circuit and the other at Motegi, Japan's only CART series track. Through rigorous testing on these circuits, our engineers developed a unique rear suspension

for the Tourer. Why? To give it the pin sharp responses and superb ride and handling normally associated with a saloon. It also minimises intrusion into the cabin giving you maximum load space.

As for the brakes, all round disc brakes with ABS, EBD and brake assist, together with an improved power assisted steering system are standard on the new Tourer. And the 2.4 litre model has the added benefit of VSA (Vehicle Stability Assist). This can detect wheel slip and adjust power and braking to the affected wheel until traction is regained.

After all, if you need the extra capacity that an estate gives you, why should you have to compromise on driving performance?





?Who would spend hundreds of hours on something you can't even see

Honda would. Aerodynamics is an integral part of car design for us. So much so, we even built our own wind tunnel and provide training across the world for designers. Our award winning IMA car, the Insight, is the most aerodynamic production car in existence, with a drag co-efficient of just 0.25.

We've taken the lessons we've learnt into the Accord. The Tourer has an impressive drag co-efficient of 0.32.

For you this means a significant reduction in wind noise, increased maximum speed and enhanced fuel efficiency.

So even though you can't see some of our best work, the benefits are clearly visible.







?Peace of mind

There is with the Accord. Because we've carefully considered safety from the outside in.

The bodyshell is engineered to absorb and deflect impact energy away from the passengers.

It has front and side airbags, and the largest, fastest inflating curtain airbags in its class. Helium filled for a softer cushion.

There are pre-tensioners in the front and three-point seatbelts and head restraints in the front and rear.

And the industry standard ISOFix system on all Accords features top tether mounting points for added child safety.

But the Accord thinks beyond the obvious safety features.

You can't drive safely if you're too hot, or cold. So the dual zone climate control lets you set your own preferred driving temperature.

The cruise and in-car entertainment controls are mounted on the steering wheel, reducing the need to move your hands.

There are larger windows, making it easier to see.

Even the build ensures a quieter interior, giving an overall sense of calm and control.

If you can't find it, create it.

We wanted to put our cars through rigorous safety tests. But we couldn't find the facilities to do it to the standard we wanted. So we built our own crash test facilities at Tochigi. It's the largest indoor crash test facility in the world. And it has allowed us to test the Accord's crash resilience in all possible directions – because that's the way it happens in real life.

It's not only the people in our cars that we think about. It's the people outside. So we designed our own pedestrian crash test dummy, POLAR, to resemble as closely as possible the reactions of the human body. Our new generation dummy, POLAR II is the result of new advancements we've made in pedestrian safety. It's the closest we've ever got to replicating the reactions of the human body in a crash. Research using POLAR II has allowed us to collect valuable data on how our bodies would react in a variety of crash scenarios.

It has helped us to refine the Accord's design to reduce the risk of head, leg and knee injuries to pedestrians.

Because people come first.





Engine warning lights: battery, oil, and check engine.

Tachometer scale: 4, 5, 6, 7, 8 x1000r/min

Gear indicator: P, R, N, DM, D3

Speedometer scale: 0, 20, 40, 60, 80, 100, 120, 140, 160 mph

Inner scale: 0, 20, 40, 60, 80, 100, 120, 140, 160, 180, 200, 220, 240, 260 km/h

Digital display: 000229 TRIP A 19 19

Model ID: 6560-A9

ABS (Anti-lock Braking System) warning light

VSA (Vehicle Stability Assist) warning light

Key icon (immobilizer)

Headlight warning light

Fuel gauge

Tail gate warning light

Parking brake warning light

Here is a selection of the features available across the Accord range. Please refer to full specification tables for further details.



The dual zone climate control allows front seat passengers to set temperature independently.



The steering wheel has 40mm of telescopic adjustment to give you the perfect reach.



Four degrees of tilt adjustment ensures maximum comfort and a clear view of the instruments.



The armrest lifts to reveal a shallow trinkets tray, which can be raised using a separate lever to open up the deeper storage box underneath.



The lockable glovebox has plenty of room for maps, manuals or personal belongings, and is fitted with a light.



This handy compartment set low in the dash is the perfect place to store small essentials.



Controls for electric door mirrors and front and rear windows as well as the security lock are neatly mounted in the driver's door handle unit.



Heated seats with high and low heat settings are standard on Executive models, fitted with leather upholstery.



Executive models feature electric driver seat controls, with effortless eight-way adjustment including 40mm of height and 80mm fore-and-aft.



The sunglasses holder is conveniently located directly above the driving mirror and fitted with a secure damped-action cover on SE models.



On Executive and Type S models the ultrasonic alarm is discreetly stored in place of the sunglasses holder, for optimum interior monitoring.



Within the centre console are drink holders, ashtray, lighter and CD storage.



We chose the fully-adjustable Schukra-manufactured lumbar support, well known for its comfortable fit.



Driver and front passenger seatbelts are fitted with pre-tensioners and height adjust for perfect comfort and safety.



The centre armrest slides forward and back to match your ideal seat position.



Rear-seat passengers get twin cupholders too, built into the fold-down centre armrest.



Seatback pockets are standard on the rear of front passenger seat on all models, and the rear of driver seat on Executive models.



A removable panel in the side wall of the cargo area conceals a small storage compartment, with straps to secure a first-aid kit or other items.



The vanity mirror in the driver and passenger sun visor has its own light, on all models excluding 2.0 SE.



A warning light illuminates automatically as soon as either front door is opened.



Luggage area lights are located on both cargo walls, with a handy hook and 12V power outlet.



This unit behind the rear-view mirror activates the rain-sensing wiper system, which automatically adjusts the wiper speed according to rain intensity, and can be fine-tuned using a control on the stalk. Standard on Executive models.



Heated, electrically adjustable door mirrors are standard across the Accord range.



Door mirrors also feature indicator repeaters for enhanced visibility.



Tilt-and-slide electric sunroof is standard on SE and Executive models.



All Accords come equipped with dual front, side and curtain SRS (Supplemental Restraint System) airbags.



The three rear head restraints and three-point seatbelts are fully integrated into the seat back as part of the Tourer's unique One Motion rear seat folding mechanism.



All models (except 2.0 SE) feature fog lights adding style as well as safety.



New projector-style headlamps improve visibility and safety, with powerful high-intensity gas discharge (HID) headlamps which are standard on the 2.4 Executive model.



Headlight washers are standard on Executive models.



The Vehicle Stability Assist (VSA) system fitted as standard on 2.4-litre models.



The Premium Sound System, standard on Executive models, includes additional speakers, including a boot mounted subwoofer.



Instead of carrying around a heavy spare wheel, the Accord Tourer is equipped with a tyre repair kit, consisting of repair fluid and an air compressor powered by the car's 12V outlet. (Space saver spare wheel is available as an option.)



Chrome exhausts provide an impressive finishing touch on all models, with twin tail pipes on 2.4-litre models.



To preserve the Accord's clean, aerodynamic lines, the radio antenna is built into the rear side window - just another example of our attention to detail.



To allow best use of the power tail gate, the control is incorporated in the latest design ignition key.





We've always believed in building the cars we'd like to drive ourselves.

Our model line-up has been designed to appeal specifically to our customers tastes.

2.0 SE	49
2.0 Executive	50
2.4 Type S	51
2.4 Executive	52

2.0 SE



Silver coated trim with black fabric upholstery. Available with all exterior colour options. For full exterior colour options, please see colour palette at back of brochure.



Model shown is 2.0 SE with standard 15" Alloy Wheels

2.0 EXECUTIVE



Images shown on this page feature standard leather upholstery.



Light wood trim with ivory leather. Available with Graphite Pearl, Nighthawk Black Pearl, Indigo Blue Pearl, Arctic Blue Pearl and Royal Ruby Red exterior colour options. For full exterior colour options, please see colour palette at back of brochure.



Dark wood trim with black leather. Available with all exterior colour options. For full exterior colour options, please see colour palette at back of brochure.



Model shown is 2.0 Executive with standard 15" Alloy Wheels

2.4 TYPE S



Sport trim with sports upholstery. Available with Satin Silver Metallic, Graphite Pearl, Nighthawk Black Pearl, Arctic Blue Pearl, Milano Red exterior colour options. For full exterior colour options, please see colour palette at back of brochure.



Model shown is 2.4 Type S with standard 16" Alloy Wheels

2.4 EXECUTIVE



Images shown on this page feature standard leather upholstery.



Light wood trim with ivory leather. Available with Graphite Pearl, Nighthawk Black Pearl, Indigo Blue Pearl, Arctic Blue Pearl and Royal Ruby Red exterior colour options. For full exterior colour options, please see colour palette at back of brochure.



Dark wood trim with black leather. Available with all exterior colour options. For full exterior colour options, please see colour palette at back of brochure.



Model shown is 2.4 Executive with standard 16" Alloy Wheels

The Honda Accord features the latest technology with advanced touch screen Satellite Navigation system on the 2.4 Executive only.



Satellite Navigation, with Premium audio system, is standard on the 2.4 Executive, and includes a dash mounted six CD auto-changer loaded at the touch of a button.



Powerful, accurate yet incredibly user-friendly with its intuitive 7 inch touch-screen.



The Satellite Navigation system uses pan-european DVD based mapping software and GPS (Global Positioning System) and can determine your exact location.



Reflecting the Accord's international market and appeal, there are ten language options to choose from.



The Satellite Navigation screen also controls the air conditioning.



It also controls the radio station selection, volume, tone and sound balance.



Your CD selection can be changed simply by touching the screen.



Precise data is entered into the system using the easy to read alpha numeric keypad.

	2.0 SE	2.0 Executive	2.4 Type S	2.4 Executive
Engine				
Arrangement	Front, transverse mounted			
Type	4 cylinder in-line, all aluminium DOHC i-VTEC			
Working principle	Programmed multi-point fuel injection (PGM-FI)			
Engine capacity (cc)	1998	1998	2354	2354
Bore x stroke (mm)	86x86	86x86	87x99	87x99
Compression ratio	9.8	9.8	10.5	10.5
Max power (kW)	114@6000	114@6000	140@6800	140@6800
Max power (PS)	155@6000	155@6000	190@6800	190@6800
Max torque (Nm)	190@4500	190@4500	223@4500	223@4500
Performance (man/auto)				
Max speed (mph)	128 / 125	128 / 125	138	138 / 133
Acceleration 0-62mph (secs)	9.9 / 11.5	10.0 / 11.5	8.4	8.4 / 10.0
Fuel consumption (man/auto)†				
Exhaust emissions control	3 way catalytic converter with recirculation			
Emissions directive compliance	EU2005 (EURO IV)			
Fuel required	95RON	95RON	95RON	95RON
Urban cycle (mpg)	25.9 / 22.6	25.9 / 22.4	21.2	21.1 / 19.8
Urban cycle (L/100km)	10.9 / 12.5	10.9 / 12.6	13.3	13.4 / 14.3
Extra urban (mpg)	41.5 / 42.2	41.5 / 41.5	36.7	36.7 / 37.7
Extra urban (L/100km)	6.8 / 6.7	6.8 / 6.8	7.7	7.7 / 7.5
Combined cycle (mpg)	34.0 / 32.1	34.0 / 31.7	29.1	28.8 / 28.2
Combined cycle (L/100km)	8.3 / 8.8	8.3 / 8.9	9.7	9.8 / 10.0
CO ₂ emissions (g/km)	196 / 209	196 / 211	230	232 / 237
Fuel tank capacity (litres)	65	65	65	65
Transmission				
5-speed manual - dry single clutch	■	■	-	-
6-speed manual - dry single clutch	-	-	■	■
5-speed automatic (sequential shift) - triple cone synchronisation	○	○	-	○
Gear ratios - manual				
1st	3.266	3.266	3.533	3.533
2nd	1.769	1.769	1.880	1.880
3rd	1.212	1.212	1.354	1.354
4th	0.921	0.921	1.027	1.027
5th	0.738	0.738	0.825	0.825
6th	-	-	0.659	0.659
Reverse	3.583	3.583	3.583	3.583
Final	4.764	4.764	4.388	4.388
Gear ratios - automatic				
1st	2.652	2.652	-	2.652
2nd	1.516	1.516	-	1.516
3rd	1.082	1.082	-	1.082
4th	0.773	0.773	-	0.773
5th	0.566	0.566	-	0.566
Reverse	2.000	2.000	-	2.000
Final	4.563	4.563	-	4.438

■ standard ○ optional - not available

Wheels and tyres

	2.0 SE	2.0 Executive	2.4 Type S	2.4 Executive
Tyre size	195/65 R15	195/65 R15	205/55 R16	205/55 R16
Alloy wheel size	15x6JJ	15x6JJ	16x6.5JJ	16x6.5JJ
17" Alloy wheels	○	○	○	○
Instant mobility system (IMS) repair kit	■	■	■	■
Space saver spare wheel	○	○	○	○

Steering system

Hydraulic power assisted, rack and pinion	■	■	■	■
Overall ratio	15.2	15.2	15.2	15.2
Turns, lock to lock	2.98	2.98	2.98	2.98
Turning radius at body (m)	5.8	5.8	5.8	5.8
Turning radius at wheel (m)	5.5	5.5	5.5	5.5

Dimensions interior (mm)

Seating capacity	5	5	5	5
R-point to ground (front)	505	505	505	505
R-point to heel (front/rear)	259/293	259/293	259/293	259/293
Headroom (front)	970	970	1013	970
Headroom (rear)	947	947	983	947
R-point (front to rear seat)	788	788	788	788
R-point to centre of front wheel	1420	1420	1420	1420
Shoulder room (front/rear)	1403/1362	1403/1362	1403/1362	1403/1362
Hip room (front/rear)	1381/1324	1381/1324	1381/1324	1381/1324

Weights and towing data (kg)*

Kerb weight (man/auto)	1477 / 1509	1482 / 1560	1508	1561 / 1567
Maximum permissible weight	2030	2030	2060	2060
Maximum towing weight (with brakes man/auto)	1500/1500	1500/1500	1500	1500/1500
Maximum roof load	80	80	80	80
Maximum trailer nose weight	75	75	75	75

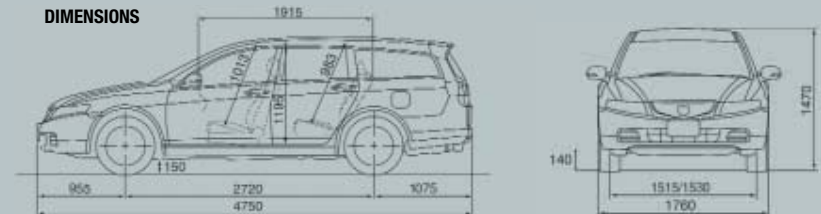
Boot capacity (VDA Method - litres)

Rear seat up (to window line)	626	626	626	626
Rear seat down (to window)	971	971	971	971
Rear seat down (to roof)	1707	1707	1707	1707

Safety

5 x 3 point seat belts with ELR	■	■	■	■
Dual front SRS (supplemental restraint system) airbags	■	■	■	■
Dual side SRS airbags	■	■	■	■
Dual curtain SRS airbags (front & rear)	■	■	■	■
Front seat belt pre-tensioners	■	■	■	■
Front seat belt height adjustment	■	■	■	■
Twin ISOFix child seat anchor fitting (with top tether)	■	■	■	■
External temperature monitor	■	■	■	■
Anti-lock braking system (ABS)	■	■	■	■
Electronic brake-force distribution (EBD)	■	■	■	■
Brake assist	■	■	■	■
Side impact protection beams	■	■	■	■
High level rear brake light	■	■	■	■
Honda advanced pedestrian safety system	■	■	■	■

DIMENSIONS



† **Fuel consumption** These are the results of the official new fuel consumption test which adheres to the EC Directive 1999/100/EC. The test is designed to give results that are more representative of actual average on-road fuel consumption. Please note that when accessories are fitted to a vehicle fuel consumption and CO₂ figures may differ from those quoted. NB: The figures shown in this leaflet are primarily for comparison and will not necessarily be the same as the fuel consumption actually achieved on the road.
* **Maximum towing weights** are based on the ability of the car, with two occupants of 75kg each, to restart on a 12% gradient at sea level. At altitudes in excess of 1500 metres, engine output may drop with a reduction in towing capability. Extra weight, such as additional passengers or luggage, should also be deducted from the maximum towing weight.

	2.0 SE	2.0 Executive	2.4 Type S	2.4 Executive
Suspension				
Suspension type - front	Independent Double Wishbone, coil spring with stabiliser			
Suspension type - rear	Independent Double Wishbone, coil spring with stabiliser			
Shock absorber - front	Telescopic, hydraulic nitrogen gas filled			
Shock absorber - rear	Telescopic, hydraulic nitrogen gas filled			
Stabilizer bar type - front	Φ 27.2 x 5.3	Φ 27.2 x 5.3	Φ 27.2 x 5.3	Φ 27.2 x 5.3
Stabilizer bar type - rear	Φ 22.2 x 3.2	Φ 22.2 x 3.2	Φ 22.2 x 3.2	Φ 22.2 x 3.2
Drive by wire	-	-	■	■
Vehicle stability assist	-	-	■	■
Brake system				
Brake type - front	Power assisted self-adjusting ventilated disc			
Brake type - rear	Power assisted self-adjusting solid disc			
Parking brake type	Mechanical actuating, rear two wheel brakes			
Brake circuit	X Split			
Braking power control system	Vacuum Booster			
Disc diameter - front (mm)	280	280	300	300
Disc diameter - rear (mm)	282	282	282	282
Security				
Perimeter alarm system with remote control	■	-	-	-
CAT1 Ultrasonic alarm system with remote control	-	■	■	■
Rolling code ECU engine immobiliser	■	■	■	■
Remote entry (including boot)	■	■	■	■
Honda Superlocks (deadlocks)	■	■	■	■
Locking wheel nuts	■	■	■	■
Lockable glove box storage	■	■	■	■
2 Remote entry keys	■	■	■	■
Visible VIN	■	■	■	■
Exterior				
Electric tilt and slide sunroof	■	■	-	■
Body coloured door mirrors	■	■	■	■
Body coloured bumper	■	■	■	■
Aerodynamic sports kit	○	○	■	○
Twin chrome exhaust	-	-	■	■
Chrome door handles	■	■	■	■
Chrome grille surround	■	■	■	■
Mesh front grille	-	-	■	-
Side screen integrated aerial	■	■	■	■
Heat absorbing tinted windows	■	■	■	■
Blue half shade windscreen	■	■	■	■
Mirror integrated indicators	■	■	■	■
Front fog lights	○	■	■	■
Comfort & Convenience				
Dual zone climate control	■	■	■	■
Pollen filter	■	■	■	■
Tilt and telescopic steering wheel adjustment	■	■	■	■
Leather multi function steering wheel	-	■	■	■
Leather gear knob	-	■	-	■
Alloy gear knob	○	○	■	○
Foot rest and organ accelerator pedal	■	■	■	■
Power windows (front & rear)	■	■	■	■
Power/heated door mirrors	■	■	■	■

Headlight washers	-	■	-	■
Internally adjustable halogen headlights	■	■	■	-
Auto levelling HID headlights	-	-	-	■
Rain sensing wipers	-	■	-	■
Panel and door type - standard	■	-	-	-
Panel and door type - sports	-	-	■	-
Panel and door type - wood and leather	-	■	-	■
Coin pocket	■	■	■	■
Ashtray - front and rear	■	■	■	■
Driver seat back pocket	-	■	-	■
Passenger seat back pocket	■	■	■	■
Rear seat folding armrest	■	■	■	■
Rear seat cupholder	■	■	■	■
Rear centre head rest	■	■	■	■
One motion fold flat rear seat	■	■	■	■
Vanity mirror - illuminated with lid	-	■	■	■
Sunglasses holder	■	-	-	-
Tie down hooks in boot	■	■	■	■
Lighting - Front reading light	■	■	■	■
Lighting - Front map light	■	■	■	■
Lighting - Welcome light	■	■	■	■
Lighting - Boot illumination	■	■	■	■
Lighting - Window switch	■	■	■	■
Front and rear power socket	■	■	■	■
Cruise control	-	■	■	■
Digital odometer	■	■	■	■
Digital clock	■	■	■	■
Dashboard illumination - white	■	■	-	■
Dashboard illumination - red	-	-	■	-
Variable illumination control	■	■	■	■
Ignition switch illumination	■	■	■	■
Red line (rpm)	6800	6800	7100	7100
Horn - single tone	■	-	-	-
Horn - dual tone	-	-	■	■
Power tailgate (remote operated)	■	■	■	■
Seating				
Interior upholstery - fabric	■	-	-	-
Interior upholstery - sports	-	-	■	-
Interior upholstery - leather	-	■	-	■
Ratchet seat height adjustment	■	-	■	-
Front seat - Full power adjustment	-	■	-	■
Front seat - three stage heating system	-	■	-	■
Front seat - sliding centre armrest	■	■	■	■
Driver lumbar support	■	■	■	■
Rear centre headrest and 3 point seatbelt	■	■	■	■
Rear seat luggage net	○	■	○	■
60/40 folding rear seats	■	■	■	■
In Car Entertainment				
Stereo CD tuner with RDS	■	-	■	-
Premium 6 CD tuner with RDS	-	■	-	■
Speakers	6	8	6	8
Pan European DVD touch screen Satellite Navigation	-	-	-	■

	2.0 SE	2.0 Executive	2.4 Type S	2.4 Executive
Headlight washers	-	■	-	■
Internally adjustable halogen headlights	■	■	■	-
Auto levelling HID headlights	-	-	-	■
Rain sensing wipers	-	■	-	■
Panel and door type - standard	■	-	-	-
Panel and door type - sports	-	-	■	-
Panel and door type - wood and leather	-	■	-	■
Coin pocket	■	■	■	■
Ashtray - front and rear	■	■	■	■
Driver seat back pocket	-	■	-	■
Passenger seat back pocket	■	■	■	■
Rear seat folding armrest	■	■	■	■
Rear seat cupholder	■	■	■	■
Rear centre head rest	■	■	■	■
One motion fold flat rear seat	■	■	■	■
Vanity mirror - illuminated with lid	-	■	■	■
Sunglasses holder	■	-	-	-
Tie down hooks in boot	■	■	■	■
Lighting - Front reading light	■	■	■	■
Lighting - Front map light	■	■	■	■
Lighting - Welcome light	■	■	■	■
Lighting - Boot illumination	■	■	■	■
Lighting - Window switch	■	■	■	■
Front and rear power socket	■	■	■	■
Cruise control	-	■	■	■
Digital odometer	■	■	■	■
Digital clock	■	■	■	■
Dashboard illumination - white	■	■	-	■
Dashboard illumination - red	-	-	■	-
Variable illumination control	■	■	■	■
Ignition switch illumination	■	■	■	■
Red line (rpm)	6800	6800	7100	7100
Horn - single tone	■	-	-	-
Horn - dual tone	-	-	■	■
Power tailgate (remote operated)	■	■	■	■
Seating				
Interior upholstery - fabric	■	-	-	-
Interior upholstery - sports	-	-	■	-
Interior upholstery - leather	-	■	-	■
Ratchet seat height adjustment	■	-	■	-
Front seat - Full power adjustment	-	■	-	■
Front seat - three stage heating system	-	■	-	■
Front seat - sliding centre armrest	■	■	■	■
Driver lumbar support	■	■	■	■
Rear centre headrest and 3 point seatbelt	■	■	■	■
Rear seat luggage net	○	■	○	■
60/40 folding rear seats	■	■	■	■
In Car Entertainment				
Stereo CD tuner with RDS	■	-	■	-
Premium 6 CD tuner with RDS	-	■	-	■
Speakers	6	8	6	8
Pan European DVD touch screen Satellite Navigation	-	-	-	■

† **Fuel consumption** These are the results of the official new fuel consumption test which adheres to the EC Directive 1999/100/EC. The test is designed to give results that are more representative of actual average on-road fuel consumption. Please note that when accessories are fitted to a vehicle fuel consumption and CO₂ figures may differ from those quoted. NB: The figures shown in this leaflet are primarily for comparison and will not necessarily be the same as the fuel consumption actually achieved on the road.
 * **Maximum towing weights** are based on the ability of the car, with two occupants of 75kg each, to restart on a 12% gradient at sea level. At altitudes in excess of 1500 metres, engine output may drop with a reduction in towing capability. Extra weight, such as additional passengers or luggage, should also be deducted from the maximum towing weight.

■ standard ○ optional - not available



Once you've chosen the colour for your new Accord Tourer, you can add further touches of individuality with one of our new options packages. The **City Pack*** includes rear, side and front mouldings to give your Accord Tourer a distinctive and elegant look. The 17" Epsilon alloy wheels and tyres shown here are available as a separate option.

**Standard City Pack is black. Accessorised image features painted City Pack.*



Choose our **Sport Pack**, and your Accord Tourer takes on a whole new persona, with front, rear and side skirts giving it a purposeful, road-hugging look. But this sporting edge can extend beyond mere appearances with 17" alloy wheels and tyres, lowered sports suspension* and elliptical front foglamps, all available as separate options.

**Available from October 2003.*



Given its impressive standard specification, you may decide your new Accord Tourer is perfect just the way it is. But if you're looking for enhanced practicality, a performance edge or simply want to express your own personality, let your imagination take over as you choose from our range of options. Designed and manufactured to the same rigorous standards as the car itself, they're all covered by the same no-quibble warranty. Please ask your Honda dealer for more information.



A more sporty looking interior is available. This features aluminium look panelling for dash, aluminium gearshift knob with leather boot and matching black door step garnish. Also shown with aluminium look door switch trim kit (front and rear).



An interior pack featuring dark wood effect trim for the dash, dark wood and leather steering wheel, together with matching black doorstep garnish is available to complement black interiors.



An interior pack featuring light wood effect trim for the dash, light wood and leather steering wheel, together with matching ivory doorstep garnish is available to complement ivory interiors.

Please ask your Honda dealer for more information on other available options.



We've developed this compact 8 disc CD changer to fit into the centre armrest for maximum convenience.



An aluminium gearshift knob (available for 5 and 6-speed manual transmissions) with a leather titanium-stitched gearshift boot provides a sportier look and feel.



This rear screen entertainment system is supplied with cordless headphones, remote control and single DIN in-dash DVD MP3 player.



17" Penta Alloys



17" Epsilon Alloys



17" Multi-spoke Alloys, available from November 2003.

Alloy wheels are standard across the Accord Tourer range, we also offer a number of 17" designs for a stylish, sporty look. These are only available as a factory fit option at the time of purchase.



Powerful elliptical foglights together with electrical harness and interior switch are a useful safety option.



This neat tie-down cargo net prevents small objects from slipping in the boot, improving safety and convenience and avoiding possible damage to internal fittings and finish. A tie-down belt is also available to secure larger items.



This durable and stylish stainless steel protector strip keeps your rear bumper free of scratches when loading and unloading heavy, awkward objects.



Our engineers developed lowered suspension to ensure sportier handling without compromising comfort. Available from October 2003.



The brushed metal finish on the door step garnish, available in both ivory and black, adds an extra touch of refinement to any Accord Tourer model.



Keep your children safe and secure with this ISOFix child seat for children weighing between 9-20kgs. All Accord Tourer 2003 models feature ISOFix mounting points.



The Top Tether mounting system provides additional security and reassurance.



ISOFix mounting point detail.



The detachable trailer hitch is easily removed between towing jobs. Fixed trailer hitch also available. Single and double 7 pin electrics available.



The tow hitch can be stored safely and cleanly in this storage bag (included).



This detachable tow hitch cover can be used to conceal the tow hitch when not in use (included). Tow hitch cover supplied black, can be painted.

Also included in the range is an ISOFix infant seat* for children weighing between 0-9kgs. For children over 20kgs a booster seat and back rest are also available. Please check with your local dealer for details.
* Available from June 2003.

Please ask your Honda dealer for more information on other available options.



Roof rails, available on all grades, open up numerous extra loading possibilities, and give your new Accord Tourer a stylish, purposeful look.



These tough yet lightweight aluminium cross bars attach to the roof rails quickly and easily, and can be used with a range of attachments for outstanding flexibility, safety and load-carrying capacity.



Quick and easy to install, this tough yet lightweight aluminium carrier can be used with a range of attachments to give superb flexibility and load-carrying capacity.



Light, strong and easy to install, the luggage net lets you make use of the Accord Tourer's class-leading load height, without risk to your rear-seat passengers.



This dog guard is of an innovative and superior design, with a robust and sturdy construction created to protect the cabin area.



Avoid scratched paint and backache with this bike lift that will hoist your cycle effortlessly into position.



The roof is the safest and most convenient place to carry a bike on a car. Our compact, practical new bike carrier is simple to use, and holds your bike firmly for safe, confident travel.



The semi-rigid trunk tray provides protection to the luggage area, keeping the boot clean and tidy.



A removable carpet mat tailored to cover the entire floor of your luggage area is available. Shown in black, also available in ivory.



Light and aerodynamic, our 350 litre lockable top box adds to your load carrying capacity.



For extra security and storage a lockable 320 litre ski box is available.



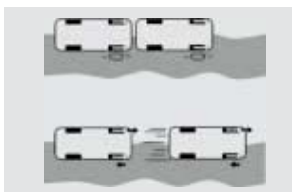
Our 320 litre top box is designed for all your equipment.



Add this front sports bumper to give a sportier look to your Accord Tourer (includes grille and fog lights).

GLOSSARY

ABS The Anti-lock Braking System prevents the wheels from locking when the brakes are applied in an emergency, reducing the possibility of a skid on wet, icy or loose surfaces, and enabling the driver to retain steering control.



Aerodynamics Aerodynamics refers to the ability of a car to overcome the resistance or 'drag' generated by its body as it moves through the atmosphere.

The Cd value multiplied by the cross section area of the car is the wind drag of the car. The new Accord Tourer's Cd value of 0,32 is among the best in its class.

The lower the Coefficient of Drag (Cd) the more aerodynamic the shape. An aerodynamic shape is more fuel efficient, quieter and generates less undesirable lift.

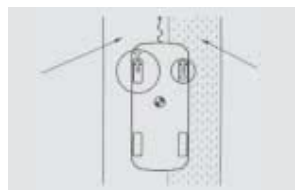
Brake Assist If you have to make an emergency stop, the system detects the quick pedal action and automatically boosts braking power to reduce the stopping distance.

CO₂ Carbon dioxide is one of the exhaust gases believed to be one of the causes of the green house effect. The lower the CO₂ emissions, the better for the environment.

Double wishbone suspension This wheel suspension layout provides maximum accuracy in defining the wheel movement during driving. The result is precise and predictable handling of the car as well as reduced body movement during braking and cornering. The Tourer has unique trailing arm double wishbone suspension, maintaining performance but allowing a wider, lower load area.



EBD Electronic Brake force Distribution works in tandem with ABS analysing weight distribution around the car and automatically adjusting the braking force applied to front and rear wheels to help maintain directional stability.

**Electronic Throttle Control System**

(ETCS or Drive-by-wire) The mechanical link from the accelerator pedal to the engine is replaced with sensors that detect the throttle position and feed instructions directly to the engine management system. This provides instant, directly proportional yet smooth responses to throttle inputs.

Ergonomics Ergonomics is the applied science of designing a working environment, in this case the car's cabin, in order to maximise the occupants comfort and safety. In simple terms, that means locating major controls and instruments in a way that makes them easy and comfortable to use and to see. This is extended to seating which minimises driver fatigue and discomfort.

Grade Logic An intelligent system built into our 5-speed automatic transmissions. When the Accord is in fully automatic mode, Grade Logic recognises different driving styles and road conditions, then selects the optimum gear ratio for smooth, seamless driving, particularly over hilly routes and through corners.

High-intensity Discharge (HID) headlamps

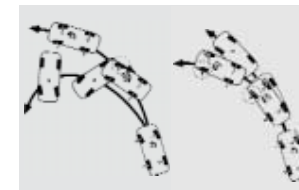
Instead of a bulb, the sealed HID headlamps contain xenon gas. An electric spark (arc) passing through the gas produces an even, true-white light with a higher intensity than conventional halogen units for improved visibility.

Rear trailing arm double wishbone suspension

The Tourer has a specially designed rear suspension system in which the damper and spring assemblies are arranged separately. By setting them lower and further out than a conventional five-link system, as used on the Accord Sedan, the wheel houses are pushed further apart, minimising intrusion and increasing the width and overall cargo space area.

Torque Torque is a twisting or rotational force. For example, when you use a spanner to tighten a bolt, you are actually applying torque to turn the bolt. The further out you hold the spanner, the more torque you apply. Low rev torque is the ability of an engine to develop strong response (rotational force), and hence, acceleration from lower revs and speeds. As speed rises, torque becomes less important than power for maintaining high speeds.

Power: Power is a measurement of how fast work can be done.



VSA Controlling oversteer

VSA Controlling understeer

VSA Vehicle Stability Assist helps you maintain control during cornering, acceleration and collision-avoidance manoeuvres. When it detects wheel-slip under acceleration, it applies braking to the affected wheel and reduces engine power until traction is regained. Any understeer and oversteer that falls outside the system's predicted range of vehicle responses is also corrected automatically.

VTC (Variable Timing Control) Changes the timing angle of the intake side camshaft relative to the crankshaft as engine speed and load change. This way the cylinder filling with air/fuel mixture is optimised for improved torque and performance, with 90% of torque available at just 3,000 rpm.

VTEC (Variable Valve Timing and Lift Electronic Control) Varies the amount of valve lift and the duration of valve opening during the intake stroke of each engine cylinder. The effect is optimised combustion over changing engine speeds with the result of reduced fuel consumption and emissions as well as increased engine performance.

i-VTEC The combination of VTEC and VTC for improved engine performance, fuel economy and emissions.

?Is this what it means to be a world leader



We're a global corporation that builds cars. Why does that make us the bad guys? We might be dreamers, but we're also realists: we can't un-invent the internal combustion engine. So instead of trying to turn back the clock, since the 70s we've been working on winding it forward.

At Honda of the UK Manufacturing in Swindon, we build cars with the future in mind. By 2010, we aim to send no waste to landfill. We're already well on the way. Cutting waste by 50% in just three years helped. It also made it easier for us to achieve the tough ISO4001 and EMAS 2 environmental management standards.

But what about the cars themselves?

What good are policies to reduce energy consumption, waste and emissions if you're still churning out gas-guzzlers?

As well as all our engines, we even make small parts like con-rod bolts and brackets from aluminium. Why? Because it's one-third the weight of steel. A lighter car needs less energy to get moving than a heavy one, so fuel economy's improved. We've also made our cars virtually PVC and lead-free, and upped our use of recycled and recyclable materials in areas like dashboards and

bumpers. But we're engine people at heart, so we've been busy here, too. The Insight is the most fuel-efficient production sports coupé in existence. Big claim. But backed up with first place in the Sports/Coupé category of the Environmental Transport Association's Car Buyer's Guide 2002. Love the idea but need more space? Good news: the same integrated motor assist (IMA) technology is now available in a 4 door Civic SE Executive.

And while others wonder whether they shouldn't be researching a zero-emission alternative, we've got on with actually building it. Our FCX fuel-cell vehicles are already on the streets of Tokyo and LA. And heading this way.

Which just leaves our bikes and boats. Reducing our motorcycles' emissions and fuel consumption by 30% is a work-in-progress, and soon we won't be building any two-strokes at all. If you're looking for an outboard, it's already four-stroke only. And when new emissions regulations come into force in 2006, you can relax knowing your engine already exceeds them.

Leadership is knowing where you're going and persuading others to come with you. Do you follow?

?Why do we find it hard to talk about money

You've studied it. Talked about it. Dreamed about it. Now you have to pay for it. Just doesn't feel like part of the fun, somehow. So we thought, there should be a better way to do this. Not a quick-fix, easy-terms, one-size-fits-all deal, either. Finance that sounds too good to be true usually is. We were thinking 'honest', 'straightforward' and 'flexible'. And that's what you get, right from making the deposit.

?So where do we start

With the deposit. Your current car or cash are both fine. You don't have either? No problem: we can work out a zero-deposit package, too.

?Done your sums

The most important part of any finance is the monthly payments. Only you know how much you can really afford. So tell us. That way, we can work out monthly payments to fit in with your budget. Our finance packages are flexible enough to work round just about anything. After that, it's up to you.

We give you choices right through the process. Including at the end of the agreement. You want to keep the car? Simple: make the final payment and it's all yours. Or, you can give it back. As long as it's in good condition and within the agreed mileage, you can walk away with nothing more to pay*. And if you're ready for a new

Honda, we'll arrange a part-exchange and a new finance package. Easy, really.

Making our finance more straightforward meant leaving out a few things. The long, complex forms. The dense technical jargon. The wait to see if you've got the go-ahead. We didn't think you'd miss them. We don't. All of which means you get your new Honda quicker.

Of course, none of this is any substitute for talking it over with your local Honda dealer. So now you know what to expect from a visit to us. When can we expect a visit from you?

Accord Tourer 2.0 SE manual

OTR Price	£17,495.00
Deposit	£3,307.00
Advance	£14,188.00
36x	£310.00
1x (GMFV)	£6,272.00
Total Amount Payable	£20,784.00
APR	10.7%
Annual Mileage	10,000
Excess Mileage	9p per mile

Honda Aspirations/Hire Purchase Legal Copy

Total cash price includes £475 delivery & number plates, £25 first registration fee and VED in line with Government Legislation. The Guaranteed Minimum Future Value ("Honda Aspirations only") will be used to pay the Final Payment if the car is returned after the last monthly payment provided the car has been serviced in accordance with the Honda service book, is in good condition and the maximum permitted mileage has not been exceeded. A £95 Credit Acceptance Fee is included in the monthly payments and a £45 Option to Purchase Fee is payable with the final payment. Offer not available to limited companies. Finance is only available to persons aged 18 or over subject to status. Indemnities may be required in certain circumstances. Full written quotations available on request. All figures are correct at time of publication but may be subject to change. Models subject to availability.

?Want to predict the future

The Accord, like all Hondas, is made to our exacting standards. But we take nothing for granted. So the New Accord is covered by a 3 year manufacturer's warranty*. You can extend this period of cover with a Hondacare Guarantee and give yourself peace of mind for up to a further 4 years. Hondacare Guarantee is unique and only available from authorised Honda dealerships.

Just choose the period of cover you want - from 4 months to 4 years. Then sit back and relax, knowing that help is only a telephone call away. Unexpected repair bills will be settled immediately.

Further benefits include:

- Repairs carried out by Honda Trained technicians
- Guarantees the use of only Genuine Honda parts
- Fully comprehensive AA cover

Just ask your authorised Honda Dealership for more details.

*Subject to the Warranty terms and conditions listed on pages 6 and 7 of your service book.

?Like beneficial Insurance rates

The Hondacare insurance scheme has been specially designed so that Honda owners receive beneficial insurance cover at competitive rates. To obtain details of all the benefits included and to receive a quotation, please contact your authorised Honda Dealer or call 0845 200 8000.

?Is help at hand when it really matters

With Honda it is. Because if you're unlucky enough to have an accident, we have a free Accident Management Service that will sort all the details for you and make it a priority to get your car back on the road. In the event of an accident please telephone 0800 521 728.

COLOUR OPTIONS

?Ready to make the big decision

With eight stunning colours, including pearl finishes, and a range of fabric and leather interior trims to choose from, we never promised it would be easy. All the colour schemes are designed to show off the Accord's bold, distinctive lines, and provide a relaxed, inspiring driving environment. All you have to do is decide which one's right for you. Take your time.

Satin Silver Metallic

Graphite Pearl

Nighthawk Black Pearl

Mist Opal Green Metallic

Indigo Blue Pearl

Arctic Blue Pearl

Milano Red

Royal Ruby Red Pearl

Graphite Pearl

	Black fabric	Sports upholstery	Black leather	Ivory leather
2.0 SE	■	-	-	-
2.0 Executive	-	-	■	■*
2.4 Executive	-	-	■	■*
2.4 Type S	-	■	-	-

■ standard - not available * available to customer order

Satin Silver Metallic

	Black fabric	Sports upholstery	Black leather	Ivory leather
2.0 SE	■	-	-	-
2.0 Executive	-	-	■	-
2.4 Executive	-	-	■	-
2.4 Type S	-	■	-	-

■ standard - not available

Mist Opal Green Metallic

	Black fabric	Sports upholstery	Black leather	Ivory leather
2.0 SE	■	-	-	-
2.0 Executive	-	-	■	-
2.4 Executive	-	-	■	-
2.4 Type S	-	-	-	-

■ standard - not available

Nighthawk Black Pearl

	Black fabric	Sports upholstery	Black leather	Ivory leather
2.0 SE	■	-	-	-
2.0 Executive	-	-	■	■*
2.4 Executive	-	-	■	■*
2.4 Type S	-	■	-	-

■ standard - not available * available to customer order

Arctic Blue Pearl

	Black fabric	Sports upholstery	Black leather	Ivory leather
2.0 SE	■	-	-	-
2.0 Executive	-	-	■	■*
2.4 Executive	-	-	■	■*
2.4 Type S	-	■	-	-

■ standard - not available * available to customer order

Indigo Blue Pearl

	Black fabric	Sports upholstery	Black leather	Ivory leather
2.0 SE	■	-	-	-
2.0 Executive	-	-	■*	■
2.4 Executive	-	-	■*	■
2.4 Type S	-	-	-	-

■ standard - not available * available to customer order

Royal Ruby Red Pearl

	Black fabric	Sports upholstery	Black leather	Ivory leather
2.0 SE	■	-	-	-
2.0 Executive	-	-	■*	■
2.4 Executive	-	-	■*	■
2.4 Type S	-	-	-	-

■ standard - not available * available to customer order

Milano Red

	Black fabric	Sports upholstery	Black leather	Ivory leather
2.0 SE	■	-	-	-
2.0 Executive	-	-	■	-
2.4 Executive	-	-	■	-
2.4 Type S	-	■	-	-

■ standard - not available