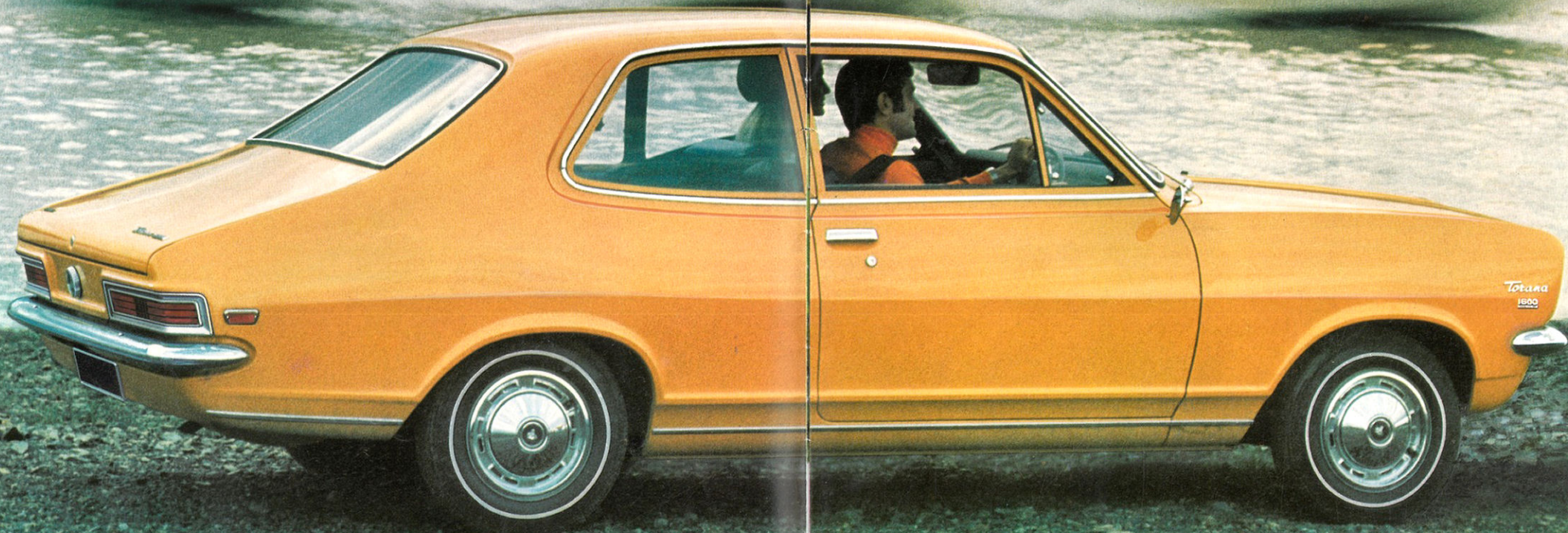


TORANA

"1600" OVERHEAD CAM DE LUXE / "1200" DE LUXE / "1200"

HOLDEN'S MIGHTY LITTLE MILE-EATER





TORANA 1600^o OVERHEAD CAM DELUXE... EFFORTLESS EXCITEMENT STARTS HERE

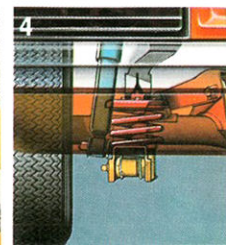
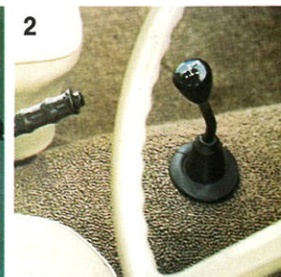
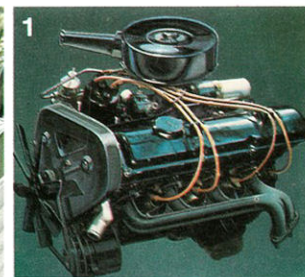
We repeat, overhead cam! This is the car that will set you talking the moment it sets you going. Because going is what Torana '1600' Deluxe is all about. Switch on, and you'll see what we mean. The overhead cam cross-flow, slant-four engine gives you all the power you need when you need it most, smoothly and economically. (That way, you eat miles—not petrol.)

But the good news is only beginning.

There's a whole lot more to Holden's mighty little mile-eater... including rally-winning features proven by big, big brother Torana GTR-XU1. Like 4-coil suspension, high rating front coil springs for improved handling, and 8.4" disc brakes up front for stopping power to match the going power. Plus wild, wonderful colours to let the world know where you're at.

Inside, the excitement continues. The fast short-throw 4-on-the-floor gear shift awaits your command. Or you can have the automatic ease of the ultra-smooth Tri-matic three-speed change—the quickest-thinking automatic in the world. Look around you and you'll like what you see... and feel. Contemporary trim, thick carpet, heating/demisting, deeply-padded seats with sewn and pleated upholstery, seat belts all round and a score of in-built safety features for your protection. Two or four-door Torana '1600' OHC Deluxe. Holden's mighty little mile-eater. Drive it and you'll know...

- 1 Cross-flow slant-four OHC engine for effortless, economical power.
- 2 Sporty 4-on-the-floor gear change for quick, positive shifting.
- 3 8.4" disc brakes are only part of the safety story.
- 4 4-coil suspension for smooth riding, great handling.
- 5 6.20 x 12 4-ply tyres, more rubber for more miles.





TORANA '1200'... MORE FUN THAN MANY A CAR TWICE ITS PRICE

Fun comes standard with the 2-door Torana '1200'. The sort of fun you get from a combination of sporty feel and sedan comfort.

And fun doesn't come expensive. No matter how far you go, you'll find petrol stops few and far between. Torana's 1200 cc. engine is a real miser on fuel. Steering is rack and pinion—very direct. Suspension is 4-coil—very smooth, and great handling. But above all, the Torana '1200' is a family car—and that means a roomy, practical, economical car.

Check the price and be pleasantly surprised. Then check what you get for the price, and be delighted. Because Torana '1200' is value for money from the time you buy right to the time you trade.

Torana's body construction of inner and outer stressed steel skins gives incredible strength and rigidity. Exclusive 'Rustgard' protection—an 8-stage coating process of primers and

sealants to vulnerable panel areas—stops rust before it can start. And the beautiful 'Magic-Mirror' acrylic lacquer finish keeps its showroom shine years longer.

Torana '1200'... less to buy... less to run... more smiles per gallon. Go Torana '1200', and go happy.

Low cost options for even more fun

Half the fun of buying your new car is being able to make it look the way you want it to look. And Torana gives you a choice of performance, luxury and convenience options to brighten your life at modest extra cost. These are just some of the choices open to you: **Vinyl roof.** On Deluxe models why not choose this distinctive look in a range of attractive colours?

Wheel trim rings. A popular option on all models to add that extra handsome touch.

Rally instrument cluster. Adds tachometer, ammeter, oil pressure and water temperature gauges to your instrument panel. Optional on all models.

Laminated windshield. Optional on all models. Offers increased protection against windshield shattering caused by stones, etc.

Two-tone treatment is available on Deluxe models.

Radio. Your choice of pushbutton or manual.

Increased clearance suspension. A boon if you have to travel over rough terrain.

Whitewall tyres will complement your Torana's good looks. Ask your Holden Dealer. He'll be happy to help you personalise your Torana just the way you want it, with factory-fitted options or Dealer-installed accessories.

GMH takes your safety seriously

Torana is safe to drive, safe to ride in. Because GMH cares about your safety. The Australian leader in automotive safety research, GMH proves Torana and all other Holdens at its huge \$750,000 Safety Design Test Centre at Lang Lang, Victoria.

Torana not only gives you all the safety features required by law—but a whole lot more that are ahead of their time. Dual-circuit braking ensures that, if there is a brake pressure loss on one circuit, the other will still pull you up. At the same time a warning light flashes on your dash panel.

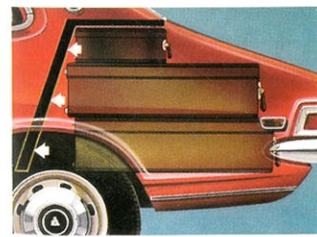
There's a strong sheet steel cargo barrier to prevent anything from moving out of the boot and into the passenger compartment in case of an accident.

Wheel rims incorporate safety beads to help keep the tyre on the wheel, even in the event of a blow-out.

The GM energy-absorbing steering column is designed to compress on impact to protect the driver. Safety padding is all around you and all instruments, knobs, switches and handles are recessed or low profile. Fusible-link wiring practically eliminates fire danger due to electrical fault or accident.

Just some of the many more safety features... knock-out, shatter-proof rearview mirror, rear side flasher lights, windscreen washers, safety door locks so children can't open doors from the inside, glare-reducing interiors, seat belts all round, modified zone windshield...

The list goes on and on. So you'll go on and on. In GMH protective safety.



SPECIFICATIONS

'1200' ENGINE 4 cylinders. OHV in-line engine, three bearing crankshaft. Bore 3.062". Stroke 2.400". Capacity 1159 cc. (70.7 cu.in.) Max. brake horsepower 56.2 at 5,400 r.p.m. Max. torque 66.5 lbs.ft. at 3,000 r.p.m. Compression ratio 8.5:1. Zenith downdraft carburettor. A 68.9 h.p. version of this engine is fitted when you choose optional Tri-matic automatic transmission on the '1200' Deluxe.

'1600' ENGINE 4 cylinders. Overhead camshaft engine. Bore 3.375". Stroke 2.726". Capacity 1599 cc. (97.5 cu.in.) Max. brake horsepower 80 at 5,500 r.p.m. Max. torque 96 lbs.ft. at 3,200 r.p.m. Zenith downdraft carburettor. **ELECTRICAL SYSTEM** 12 volt battery—38 amp, hour capacity.

FUEL TANK '1200' models: Capacity—8 imp. galls. '1600' models: Capacity—10 imp. galls. **COOLING** Pressurised cooling system with full length water jackets around each cylinder. Thermostat control, centrifugal water pump.

TRANSMISSION Manual: Four-speed all-synchromesh floor-mounted gear change is standard. Short ball-mounted lever. '1200' Ratios: first, 3.77:1; second, 2.21:1; third, 1.40:1; top, 1.00:1; reverse 3.71:1. '1600' Ratios: first, 2.78:1; second, 1.98:1; third, 1.41:1; top 1.00:1; reverse, 3.06:1.

Automatic: Optional on '1200' Deluxe and '1600' OHC Deluxe models. When you choose Tri-matic on '1200' Deluxe you get the bigger 68.9 h.p. engine. Tri-matic features three-speed, floor-mounted gear selector in console. 9" diameter hydro-dynamic torque converter, coupled to three-speed planetary gear train.

CLUTCH Diaphragm spring-action type, with mechanical operation and ball-bearing release. **REAR AXLES** '1200' models: 3.89:1 ratio with the 56.2 h.p. engine and manual transmission. When optional Tri-matic automatic and larger 68.9 h.p. engine are fitted 4.12:1 ratio axle is mandatory. '1600' models: 4.12:1 ratio axle with '1600' manual and automatic models.

WHEELS AND TYRES Short-spoke disc type wheels. On the '1200' 5.50 x 12 4-ply tubeless blackwall tyres are standard. On the '1200' Deluxe and the '1600' OHC models, 6.20 x 12 4-ply tyres are standard. Also available as an option on the '1200'.

STEERING Energy-absorbing steering column on all models. Rack and pinion. Overall ratio 16.5:1. Turning circle 31.25 ft.

SUSPENSION Front: Independent short and long arm type with coil springs and concentric shock absorbers. Ball-jointed steering knuckles. **Rear:** Four-link type, rubber bushed suspension arms, coil springs and hydraulic double-acting telescopic shock absorbers.

BRAKES 8.4" front disc brakes are standard on '1200' Deluxe and '1600' models. Optional on '1200' model, 8" diameter drum brakes are standard in '1200' model. All models feature dual-circuit hydraulic system for added safety.

DIMENSIONS Wheelbase 95.8". Track—Front 51.0". Rear 51.0". Overall Length 162.2". Overall Width 63.0". Overall Height 53.5". Approx. Kerb weight in lbs. 2-door 1880. 4-door 1929.

THE GMH WARRANTY protects your Holden Torana for the first 12 months or 12,000 miles, whichever arrives first. In addition, the GMH Guardian Maintenance Plan provides for inspection and adjustment by your Holden Dealer at the first 2,000 miles, and provides details of maintenance and labour times to 50,000 miles.

CONFIDENTIAL TIME PAYMENT—General Motors Acceptance Corporation provides low cost time payment facilities through Holden Dealers everywhere.

Note: Whitewall tyres and chrome finish wheel trim rings illustrated within this catalogue are optional appointments at modest extra cost.

PLEASE NOTE: As the policy of General Motors is one of continual improvement, all specifications, equipment and prices are subject to change without notice.



TORANA 4

GET IN AND GO WITH
HOLDEN'S MIGHTY
LITTLE MILE-EATER

