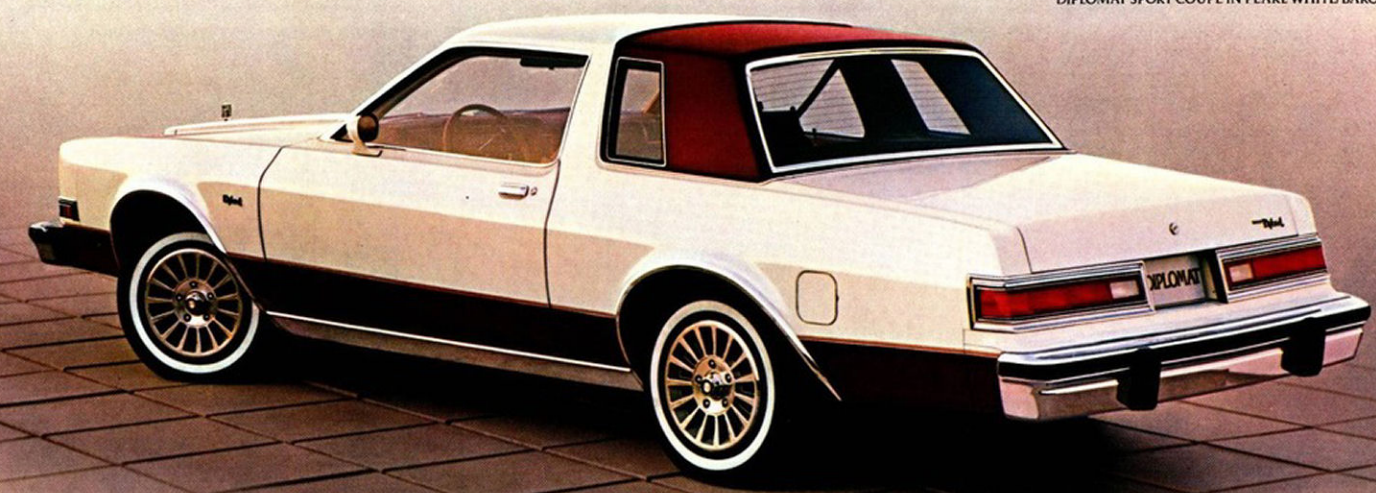


# 1981 DODGE DIPLOMAT





DIPLOMAT SPORT COUPE IN PEARL WHITE/BARON RED.



**DIPLOMAT. IT'S WHAT QUALITY AND VALUE ARE ALL ABOUT.**

1981 Diplomat. What sets it apart from other mid-size cars? A firm commitment to quality that's readily apparent everywhere you look... outside, inside and under the hood.

First and foremost, judge its outward appearance. Not just its graceful lines and styling refinements, mind you. But things more subtle, yet telling. Check the fit and finish at every turn. Dodge does. Time after time. During assembly and after, during actual on-road testing and especially just before delivery to dealers... and you, our customers.

Explore further. You'll find the same quality workmanship apparent inside Diplomat's surprisingly spacious interior. Quality that's obvious and pleasing to the eye.

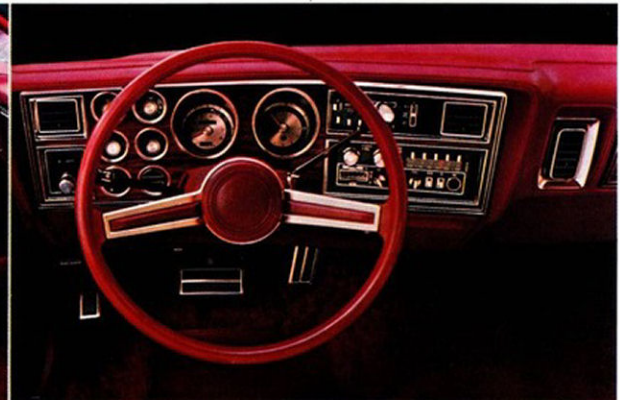
Then drive one. Note the response of its proven standard

Slant Six power plant, an engine that has been constantly refined over many years and millions of miles to make it one of the most dependable ever built.

You'll notice the smooth-shifting TorqueFlite wide-ratio automatic transmission and how well it works with the standard power steering, power brakes and radial tires to make Diplomat perform and handle like the quality mid-size car that it is. In fact, The New Chrysler Corporation is so sure of Diplomat's quality engineering and construction, it offers a 30-Day/1,000-Mile (whichever comes first) Satisfaction Money-Back Guarantee that's available at many dealers. See page 12 of this catalog for full details.



DIPLOMAT SALON'S OPTIONAL HIGH-BACK BUCKET SEAT INTERIOR, SHOWN HERE IN RED CLOTH.



DIPLOMAT SPORT COUPE'S STANDARD INSTRUMENT PANEL WITH STANDARD TWO-SPOKE STEERING WHEEL. SHOWN WITH OPTIONAL AM/FM STEREO RADIO WITH CB AND AIR CONDITIONING.

About this catalog. We have tried to make this catalog as complete as possible. And we hope you find it useful. However, since the time of printing some of the information you'll find here may have been updated. Also, some of the equipment shown or described throughout this catalog is available at extra cost. Your dealer has details and you should ask him for current information before ordering.

DIPLOMAT SALON TWO-DOOR IN BLACK.



DIPLOMAT MEDALLION FOUR-DOOR SEDAN SHOWN IN DAYSTAR BLUE.

DIPLOMAT SALON FOUR-DOOR SEDAN SHOWN IN LIGHT SEASPRAY GREEN METALLIC.



### DIPLOMAT FOUR-DOOR. THE SENSIBLE FAMILY FRIEND.

Sure, there's the convenience of four doors. Yes, there's plenty of room for friends and family. Of course it's responsive and the ride is comfortable and serene. Stop right there. Comparisons end. This is a Diplomat Four-Door.

Notice the dramatic front end design. Look at the smooth flanks, squared-off fenders and formal roof line. Feel the luxurious standard cloth-and-vinyl seats. Notice the new door trim panels with long armrests that conveniently house integrated controls for optional power windows, power door locks and remote outside mirrors.

Then check out its quality and value features. There's the quiet responsiveness of the standard 3.7-liter one-barrel Slant Six engine with standard TorqueFlite automatic transmission. Feel it all come together on a chassis

featuring isolated transverse torsion bar suspension up front and isolated leaf springs in back for a smooth, impressive ride.

A four-door should be a practical car. Solid, secure and long-lived. This Diplomat is all that and more. Consider its construction. Solid Unibody. Built with many galvanized sheet metal panels and other corrosion-resistant materials. The front suspension height is easily adjustable for quick service if it's ever needed. The ignition system is electronic for even quicker starts.

It all adds up to an admirable combination of engineering and assembly that reflects the quality inherent in Diplomat's basic design. Sensible? Very much so. But then Dodge...and you...wouldn't have it any other way.



OPTIONAL VINYL BENCH SEAT WITH FOLDING CENTER ARMREST. OFFERED IN GREEN, RED, CASHMERE.



DIPLOMAT'S TRUNK OFFERS 15.6 CUBIC FEET OF CARGO SPACE.



DIPLOMAT WAGON. A VERY PRACTICAL WAY TO CARRY ON.

This is a very special mid-size wagon. That's because it was sired in the Diplomat family. It's plush and practical. It's full of style, taste, quality and value. It's smart and bright and contemporary. But surrounding it all is the convenience of four doors, full six-passenger seating and mid-size station wagon capacity. In fact, with the rear seat folded down, you've got 73.3 cubic feet of useful cargo space.

You'll also appreciate the standard 3.7-liter Slant Six engine with standard wide-ratio TorqueFlite automatic transmission. And Diplomat Wagon doesn't bounce over rough roads, either. Standard patented transverse torsion bar front suspension and radial-ply tires take care of that.

You expect a wagon to be a worker. And work this wagon does. It was built for it. Under the watchful eye of Dodge's tough quality control program. Diplomat Wagons - all Diplomats, for that matter - are selected at random as they come off the assembly line or as they wait to be shipped. They're checked for fit, function and appearance ...before they are delivered to dealers or customers. If they don't make the grade, they're sent back. It's as simple as that. That's the only way to ensure a well-built, quality car. And that's the way Dodge builds its Diplomats. Every one is shown the special attention it deserves.



DIPLOMAT SALON WOODGRAIN WAGON SHOWN IN SPICE TAN STARMIST.



DIPLOMAT SALON WAGON OPTIONAL CLOTH-AND-VINYL 60/40 SEAT WITH FOLDING ARMREST. SHOWN IN CASHMERE.

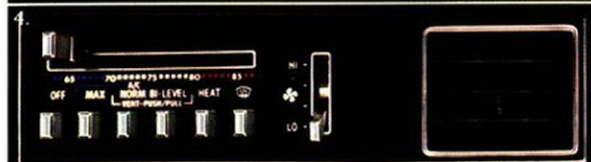
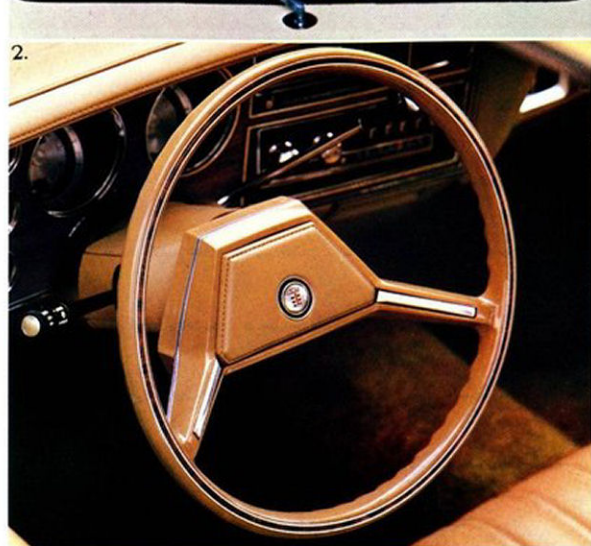


DIPLOMAT'S LIFTGATE OPENS WIDE TO PROVIDE A BIG ENTRYWAY TO ITS 73.3 CUBIC-FOOT CARGO AREA.

## DIPLOMAT OPTIONS

1. Get a better idea of what's going on behind you and your new Diplomat Wagon... with this liftgate wiper/washer system. 2. Wrap your hands around this handsome two-spoke luxury steering wheel. It's new for '81 and standard on Medallion models... optional on all other Diplomats. 3. An AM/FM stereo radio with cassette tape player and Dolby\* system will fill your Diplomat with the sound of music. Includes four speakers: two front and two rear.

\*Dolby is a trademark of Dolby Laboratories, Inc.  
4. Air conditioning is available on every 1981 Diplomat, with eight modes of operation for year-round comfort. 5. An illuminated entry system is another item on Diplomat's '81 options list. Lifting either front door handle turns on all interior courtesy lights and illuminates the door key cylinder for your safety and convenience. 6. Diplomat's automatic speed control and deluxe intermittent windshield wiper system are practical additions for anyone who does a lot of highway driving. 7. Finding your favorite station is as easy as using a pocket calculator or a push-button phone. A vacuum fluorescent digital display indicates station frequencies on Diplomat's electronic Search-Tune AM/FM stereo radio. 8. This handsome wire wheel cover is available on all Diplomats for that contemporary classic look. 9. 5/50 Protection Plan is an optional service contract. It's the longest protection plan\* of any domestic manufacturer and covers major power train components for five years or 50,000 miles (whichever comes first) from the time you take delivery of your new Dodge. Coverage begins after the limited warranty expires. The plan, which has a \$50 deductible per repair visit, also has an allowance for alternate transportation and towing. Ask your dealer for full details, including plan availability in your area. \*Provisions of plans may vary with manufacturer.



CHRYSLER CORPORATION'S PROTECTION PLAN

EXTENSIVE USE OF GALVANIZED SHEET METAL FOR CORROSION PROTECTION.

STANDARD POWER STEERING FOR EASY, PRECISE CONTROL.

ELECTRONIC IGNITION FOR SURE, QUICK STARTS.

A STANDARD PROVEN AND IMPROVED SIX-CYLINDER ENGINE FOR A GOOD BLEND OF RESPONSE AND ECONOMY.



STANDARD WIDE-RATIO AUTOMATIC TRANSMISSION.

A PATENTED TRANSVERSE TORSION BAR FRONT SUSPENSION FOR A QUIET, CONTROLLED RIDE.

STANDARD POWER BRAKES FOR SURE, FADE-RESISTANT STOPPING.

## A NEW SET OF VALUES CALLED DIPLOMAT.

**SLANT SIX ENGINE.** Diplomat's standard power plant is the proven 225 Slant Six engine which has demonstrated its reliability over the years in millions of miles of both private and commercial service. New for '81 are hydraulic valve lifters to further reduce engine noise. It's an engine that's both responsive and economical to maintain, thanks in part to the TorqueFlite automatic transmission which is also standard on Diplomat.

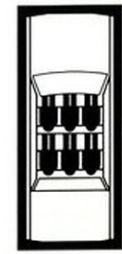
**CORROSION PROTECTION.** Chrysler Corporation's corrosion protection is among the best in the industry. It includes the use of galvanized sheet metal panels, one of the best known methods of corrosion protection, as well as the seven-step dip-and-spray process. Both keep your Diplomat looking new for years to come.

**RADIAL-PLY TIRES.** Chrysler was the first American automotive manufacturer to make radial-ply tires standard on all its domestic-built cars. And for good reason. Because of their advanced design, radial-ply tires roll more easily than standard bias-ply tires for greater fuel savings. Radials also wear better for longer tread life. And they grip the road more firmly for improved handling. Glass-belted radial white sidewalls are standard on all Diplomat models. Steel-belted radial white sidewalls are optional on all Diplomats.

**LARGE TRUNK CAPACITY.** Although some Diplomat models have become smaller and lighter in recent years, they still offer plenty of space for luggage or cargo. 14.8 cubic feet in the trunks of two-door models. 15.6 cubic feet in the trunks of four-doors. And 73.3 cubic feet in wagon models with the rear seat down. In addition, trunks are fully carpeted in Medallion models; the cargo area is fully carpeted in the Salon Wagon.

**ELECTRONIC IGNITION.** Another first for Chrysler is electronic ignition. It's standard on Diplomat, of course, to assure you of improved highway performance and sure, quick starts in all kinds of weather. It also helps prolong the life of spark plugs. And, because ignition points and condenser are eliminated, it reduces tune-up costs.

**SIX-PASSENGER ROOM.** And comfort. Every Diplomat with front bench seats offers plenty of both to handle the needs of six full-grown passengers. Some competitive models seat only five, even with front bench seats. Diplomat, unlike some competitors, offers seat construction similar to that used in fine furniture. Seats are offered in a choice of soft vinyl, rich cloth, or even optional leather in some models.



**EXTERIOR TRIM**



**Diplomat Sport Coupe** exterior and chassis features include: • Bright windshield, center pillar, rear quarter window, backlight and wheel openings — front and rear; sill moldings • Two-tone paint treatment with landau effect and painted/bright surround molding • Body-side and deck accent stripes • Sport wheel covers • Front bumper guards • Dual remote chrome sport mirrors • Front and rear bumper rub strips



**Diplomat Salon Two-Door** exterior and chassis features include: • Bright windshield molding • Bright center pillar moldings • Bright back window molding • Bright roof drip moldings • Bright quarter window moldings • Bright belt moldings • Bright sill moldings • Bright wheel openings — front and rear • Remote left side mirror • Deluxe wheel covers



**Diplomat Medallion Two-Door** has all the Diplomat Salon Two-Door exterior features plus these differences: • Body-side and deck accent stripes • Padded vinyl landau roof • Premier wheel covers



**Diplomat Salon Four-Door** exterior and chassis features include: • Bright windshield molding • Bright rear window molding • Bright roof drip moldings • Bright rear door glass division bar • Bright belt moldings • Bright sill moldings • Bright wheel opening moldings — front and rear • Bright upper door frame moldings • Front and rear bumper rub strips • Remote left chrome mirror • Front bumper guards • Deluxe wheel covers



**Diplomat Medallion Four-Door** has all the Diplomat Salon Four-Door exterior and chassis features, plus these differences: • Body-side and deck accent stripes • Full padded vinyl roof • Premier wheel covers



**Diplomat Wagon** exterior and chassis features include: • Bright windshield moldings • Bright drip rail moldings • Bright quarter window molding • Bright rear door glass division bar • Bright liftgate window surround molding • Center pillar Diplomat medallion • Bright wheel opening moldings — front and rear • Sill moldings • Front and rear bumper guards • Remote left chrome mirror • Front and rear bumper rub strips • Deluxe wheel covers



**Diplomat Salon Wagon** has all the Diplomat Wagon exterior and chassis features, plus these differences: • Bright belt moldings • Bright door upper frame moldings • Marine teak woodtone applique on front fenders, doors, quarter panels and liftgate with light woodgrain overlay stripe • Bright liftgate molding • Deluxe wheel covers

**INTERIOR TRIM**



Standard on Diplomat two-door Sport Coupe is this cloth-and-vinyl bench seat. Offered in Dark Blue, Red, Cashmere.



This vinyl seat with center armrest is optional on Diplomat two-door Sport Coupe. Offered in Green, Red, Cashmere.



Optional on Diplomat Salon two- and four-door models, this cloth-and-vinyl 60/40 seat comes in Dark Blue, Red, Cashmere, Heather.



Vinyl bench seat is standard on Diplomat Wagon. Offered in Red, Cashmere.



This vinyl bench seat with center armrest is standard on Diplomat Salon Wagon and optional on Diplomat Wagon and Diplomat Salon two- and four-door models. Offered in Green (not available on Wagon), Dark Blue, (not available on two- and four-door models), Red, Cashmere.



This cloth 60/40 seat with center armrest and passenger recliner is standard on Diplomat Medallion in Dark Blue, Green, Heather, Red, Cashmere. Optional on Wagon in Dark Blue, Red, Cashmere.



Standard on Diplomat Salon two-door and four-door models, this cloth-and-vinyl bench seat with center armrest is offered in Dark Blue, Heather, Red, Cashmere.



This optional all-vinyl 60/40 seat with folding center armrest is optional on Diplomat and Salon Wagons and all Salon models. Offered in Green (not available on Wagon), Red, Cashmere, and Dark Blue, (Dark Blue not available on two- and four-door models).



This optional leather-and-vinyl 60/40 seat with center armrest and passenger recliner is offered in Red or Cashmere on Wagon models; Dark Blue, Heather, Red, Cashmere on Medallion two-door and four-door models.



This optional leather-and-vinyl 60/40 seat with center armrest and passenger recliner is offered on Diplomat Medallion two-door models only. In White with Dark Blue, Green, Red or Cashmere interior accents.



These cloth high-back bucket seats are optional on Salon two-door models only. In Dark Blue, Heather Red, Cashmere. Center armrest cushion is available at extra cost.

**OPTIONS**

- Air Conditioning — Manual
- Air Conditioning — Semi-automatic temperature control
- Axle — Sure-Grip differential
- Battery — 500-amp Maintenance-Free Long-Life
- Bumper Guards — Rear
- Center Armrest
- Clock — Electronic digital
- Console
- Defroster — Rear window, electrically heated (required on all vehicles registered in New York State)
- Emissions Control System and Testing — Required on all vehicles registered in California
- Engine Cooling Package

- Gas Cap — Locking
- Glass — Tinted; all windows
- Headlamps — Halogen
- Horns — Dual
- Illuminated Entry System
- Lights — Cornering
- Mats — Accessory, floor; color-keyed, front and rear

- MIRRORS**
- Day/Night
- Remote Control — Dual sport; left and convex right; chrome
- Remote Control — Dual sport styled; color-keyed
- Remote Control — Right convex; chrome
- Vanity — Illuminated, left
- Vanity — Illuminated, right

- MOLDINGS**
- Belt (Wagon only)
- Door-Edge Protectors
- Pedal Dress-Up
- Upper Door Frame
- Vinyl Body Side

- RADIOS AND SPEAKERS**
- AM
- AM/FM Monaural
- AM/FM Stereo\*
- AM/FM Stereo with Cassette Player with Dolby\*\*†

- AM/FM Stereo with CB Transceiver and Fixed Tri-Band Antenna\*
- AM/FM Stereo with Eight-Track Stereo Tape Player\*
- AM/FM Stereo with Electronic Search Tune\*
- Radio Upgrade — Dual front speakers; prewiring for dual rear speakers
- Rear Speaker — Single

- Spare Tire — Conventional
- Speed Control — Automatic

- STATION WAGON ITEMS**
- Air Deflector\*
- Cargo Compartment Carpet
- Cargo Compartment Dress-Up — With lockable storage bins, carpet and skid strips
- Cargo Security Cover
- Liftgate Washer/Wiper
- Luggage Rack

- STEERING WHEELS**
- Luxury
- Luxury — Two-spoke, with leather-covered rim
- Sport
- Tilt Steering Column

- SUN ROOFS**
- Glass — Tinted, power operated
- T-Bar
- Suspension — Heavy-duty
- TIRES**
- P205/75R15 — Steel-belted radial wider white sidewall
- Trunk Dress-Up
- Undercoating
- WHEELS/ROAD**
- Forged Aluminum — Five-spoke (four)
- Styled Steel — Color keyed (four)
- WHEEL COVERS**
- Premier
- Premium
- Wire

**OPTIONAL PACKAGES**

- Basic Group**
- AM radio • Light Package
- Manual air conditioning
- Tinted glass; all windows
- Deluxe Wiper/Washer Package • Landau roof, padded vinyl (two-door; standard on Medallion); non-padded full vinyl roof (four-door); full padded vinyl roof (standard Medallion model) • Liftgate wiper/washer (Wagon) • Undercoating • Day/night mirror • Dual horns
- Light Package** (Included in Basic Group)

- Trunk or cargo light • Glove box light • Ash receiver light
- Map/dome reading lights
- Ignition switch light with time delay • Headlamp light with time delay switch • Fuel, temperature and battery warning lights • Door-ajar warning light • Headlights-on warning buzzer • Headlights-on warning chimes (Medallion model)
- Deluxe Wiper/Washer Package**
- Deluxe windshield wipers with intermittent wipe • Windshield washer fluid level warning

- Deluxe Insulation Package**
- Undercoating • Special sound insulation • Trunk dress-up
- Cargo compartment carpet (Wagon)
- Two-Tone Package**
- Two-tone exterior paint
- Color-break body accent stripes
- Protection Group**
- Door edge protectors
- Color-keyed accessory floor mats: front and rear
- Handling Package**
- Special Firm-Flex power

- steering • Extra-wide wheel rims • Rear sway bar
- Heavy-duty shock absorbers
- P205/75R15 steel-belted radial wider white sidewall tires
- Sport Appearance Package**
- Luxury two-spoke steering wheel • Color-keyed styled-steel road wheels • Dual sport-styled remote control mirrors, painted or chrome (NA Sport Coupe)
- Sport Coupe Appearance Package** (Sport Coupe model only)
- Two-tone paint • Accent stripe
- Dual sport-styled mirrors —

- color-keyed • See color chart for paint combinations
- Premium Speaker System**
- All stereo sound systems on Diplomat can be ordered with the optional Premium Speaker System. This system, featuring two front and two coaxial rear speakers, reproduces stereo programs and tapes with dramatic realism. A special 30-watt (15 watts per channel) rear amplifier with two piezo electric two-way coaxial rear speakers gives the stereo an exciting new dimension. Just

- push the power level switch button on the instrument panel to cut in the rear amplifier and coaxial speakers. A LED indicator light glows when the rear amplifier is functioning. When the switch is not on, the rear speakers are powered by the amplifier that drives the front speakers.

**ENGINES**

TYPE	DISPLACEMENT	BORE & STROKE	COMPRESSION RATIO	CARBURETION	HORSEPOWER		TORQUE	
					SAE NET @ RPM		SAE NET @ RPM	
Federal								
<input type="checkbox"/> 6-cyl OHV	3.7-liter (225 cu. in.)	3.40" x 4.12"	8.4:1	1-bbl	85 hp @ 3,600	165 lb-ft @ 1,600	130 hp @ 4,000	230 lb-ft @ 2,000
<input type="checkbox"/> V-8 OHV	5.2-liter (318 cu. in.)	3.91" x 3.31"	8.5:1	2-bbl				
California								
<input type="checkbox"/> 6-cyl OHV	3.7-liter (225 cu. in.)	3.40" x 4.12"	8.4:1	1-bbl	90 hp @ 3,600	165 lb-ft @ 1,200	165 hp @ 4,000	240 lb-ft @ 2,000
<input type="checkbox"/> V-8 OHV	5.2-liter (318 cu. in.)	3.91" x 3.31"	8.5:1	4-bbl				

**STANDARD SPECIFICATIONS**

ENGINE:	3.7-liter (225 CID) Slant Six
TRANSMISSION:	TorqueFlite automatic
SUSPENSION:	Front — Transverse torsion bar with antisway bar Rear — Leaf spring
AXLE RATIO:	2.7 (2.9 on Wagons and with air conditioning on two- and four-door models)
TIRES:	P195/75R15 glass-belted radial-ply white sidewall
BRAKES:	Power Front — Disc Rear — Drum
ELECTRICAL:	Battery — 430 amperes, Maintenance-Free Alternator — 60 amperes

**DIMENSIONS, WEIGHT AND CAPACITY**

	Two-Door	Four-Door	Station Wagon
LENGTH:	201.7" <sup>(1)</sup>	205.7" <sup>(1)</sup>	206.0" <sup>(2)</sup>
WIDTH:	74.2"	74.2"	74.2"
HEIGHT:	53.3"	55.3"	55.5"
WHEELBASE:	108.7"	112.7"	112.7"
TURNING DIAMETER:	39.5'	40.7'	40.7'
CURB WEIGHT (lbs):	3,291	3,395	3,594
TREAD (front/rear):	60.0"/59.5"	60.0"/59.5"	60.0"/59.5"
TRUNK CAPACITY:	14.8 cu ft	15.6 cu ft	—
CARGO CAPACITY:			73.3 cu ft
— Cargo length (to back of front seat)			81.5"
— Cargo width (between wheelhouseings)			43.3"
— Rear opening height			27.3"
PASSENGER CAPACITY:	6	6	6
FUEL CAPACITY:	18 gallons	18 gallons	18 gallons

<sup>(1)</sup>Includes standard front and optional rear bumper guards.  
<sup>(2)</sup>Includes standard front and standard rear bumper guards.

## STANDARD FEATURES

	Wagons				
	Sport Coupe	Salon	Medallion	Diplomat	Salon
Antisway Bar — Front	S	S	S	S	S
Brakes — Power front disc, rear drum	S	S	S	S	S
Braking System — Dual, with separate brake fluid reservoirs in master cylinder	S	S	S	S	S
Bumper Guards — Front	S	S	S	S	S
Bumper Guards — Rear	O	O	O	S	S
Bumper Systems — Energy absorbing	S	S	S	S	S
Carpets — Front and rear	S	S	S	S	S
Cigarette Lighter	S	S	S	S	S
Circuit Breakers — Headlamps and wipers: with automatic reset	S	S	S	S	S
Courtesy Lamps — Under panel	S	S	S	S	S
Engine Coolant Reserve System	S	S	S	S	S
Flasher System — Hazard warning	S	S	S	S	S
Hood Release — Inside	S	S	S	S	S
Horns — Dual	O	S	S	O	S
Ignition System — Electronic	S	S	S	S	S
Instrument Panel and Sun Visors — Padded	S	S	S	S	S
Lights — Backup	S	S	S	S	S
Lights and Reflectors — Side marker	S	S	S	S	S
Lock — Ignition and steering column	S	S	S	S	S
Mirror — Day/night, inside	O	S	S	O	S
Mirror — Remote control, left	NA	S	S	S	S
Mirrors — Outside; dual remote sport	S	O	O	O	O
Molding — Drip rail	S	S	S	S	S
Molding — Sill	S	S	S	S	S
Molding — Wheel opening	S	S	S	S	S
Moldings — Belt and center pillar (two-door)	S	S	S	O	S
Moldings — Belt and upper door (four-door)	NA	S	S	O	S
Roof — Full: padded vinyl (four-door)	NA	NA	S	NA	NA
Roof — Full: non-padded (four-door)	NA	O	NA	NA	NA
Roof — Landau: padded vinyl (two-door)	O	O	S	NA	NA
Rub Strips — Front and rear	S	S	S	S	S
Seat Belt Reminder System	S	S	S	S	S
Seat Belts — Deluxe color-keyed with tension reliever* and automatic belt rewind	S	S	S	S	S
Seat Belts — Combination lap-shoulder for driver and right-front passenger	S	S	S	S	S
Steering — Power	S	S	S	S	S
Steering Wheel — Luxury	O	O	S	O	O
Suspension System — Front transverse torsion bar	S	S	S	S	S
Tires — Glass-belted radial whitewall	S	S	S	S	S
Transmission — TorqueFlite	S	S	S	S	S
Trunk Dress-Up — Cargo compartment on wagons	O	O	S	O	S
Turn Signals — With lane-change feature	S	S	S	S	S
Wheel Covers — Deluxe	NA	S	NA	S	S
Wheel Covers — Premier	NA	O	S	O	O
Wheel Covers — Sport	S	NA	NA	NA	NA
Wheels — Safety-Rim	S	S	S	S	S
Windshield Washers and Wipers — Electric	S	S	S	S	S

S — Standard. NA — Not Available. O — Optional. \*Front outboard belts only.

All product illustrations and specifications are based on authorized information. Although descriptions are believed correct at publication approval, accuracy cannot be guaranteed. Some of the equipment shown on product illustrations is optional, at extra cost. Chrysler Corporation reserves the right to make changes from time to time without notice or obligation in prices, specifications, colors and materials and to change or discontinue models. See your dealer for the latest information.

## COLORS



**Appearance Package** (no-charge option — Sport Coupe only)  
Light Caramel Tan/Light Cashmere  
Baron Red/Pearl White  
Nightwatch Blue/Designer's Cream

NOTE: Due to occasional printing irregularities, the colors shown may vary slightly from actual hues. See your Dodge dealer for accurate color chips.

### 30-DAY SATISFACTION MONEY-BACK GUARANTEE

If you are not completely satisfied with your new Diplomat bring it back in good condition with no metal damage. Once your dealer receives clear title we'll refund your money less finance and insurance charges and less the difference, if any, between the trade-in refund value (as shown on the "Trade-In Refund Agreement") and the trade-in value allowed on the retail sales contract. One refund per customer. See your dealer for details.

### CORROSION PROTECTION

Chrysler Corporation's corrosion protection is among the best in the industry. It includes the use of galvanized sheet metal panels, one of the best known methods of corrosion protection, as well as the seven-step dip-and-spray process. Both keep your Diplomat looking new for years to come.

### Buy or Lease a Dodge Diplomat



MOPAR parts are engineered by Chrysler Corporation for use in your new Dodge. When replacement is necessary, be sure to specify MOPAR parts. Used by professional mechanics all over the world.

A PRODUCT OF THE  
NEW CHRYSLER  
CORPORATION