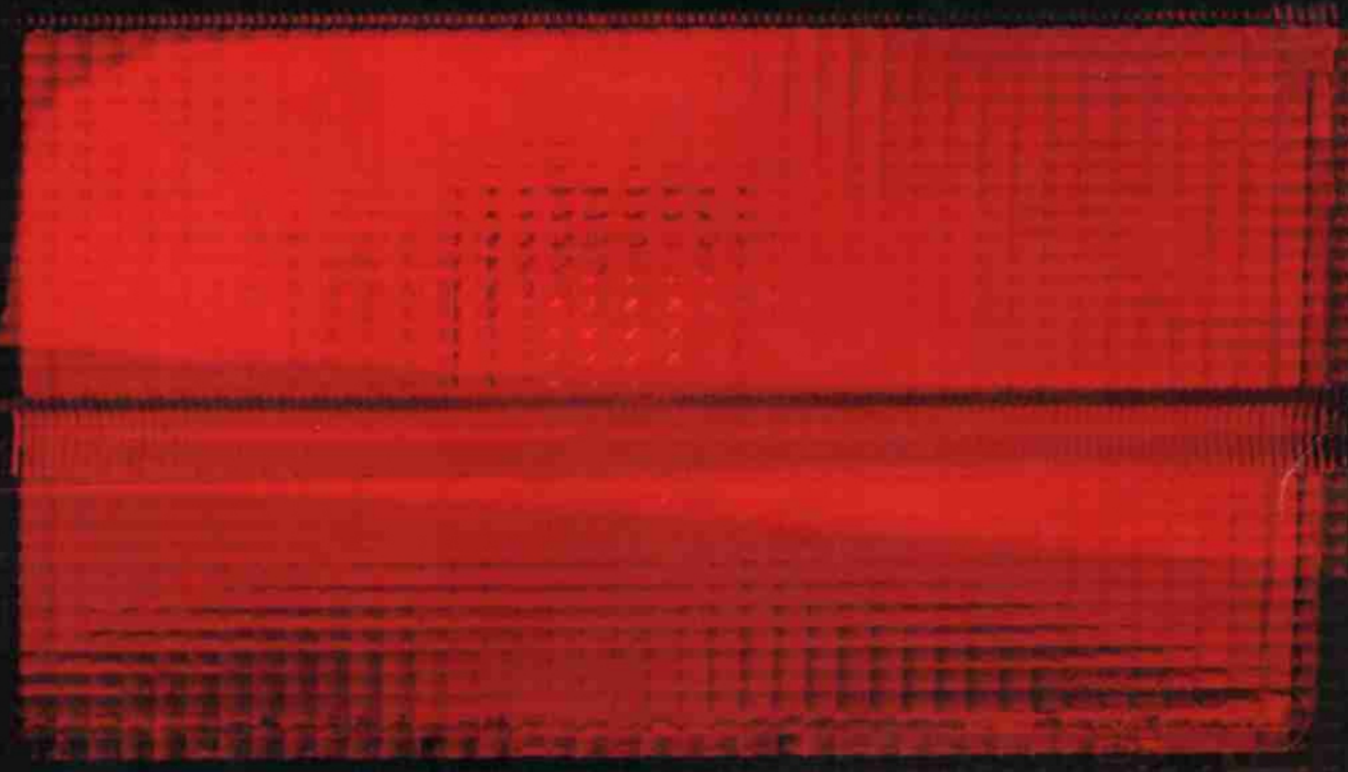


NISSAN SENTRA



The new Nissan Sentra. You need this car.

Over the past half century Nissan has earned a reputation for providing the kind of high-quality, high-mileage, economically priced cars people need. When they need them.

Now that heritage is being carried on with the new Nissan Sentra. There are seven models in all—four 2-Door Sedans, a 4-Door Sedan, a Hatchback Coupe and a Wagon—and they're all totally different from anything we've ever offered before:

Five-passenger economy cars, including one model with *the* highest gas-mileage figures in America.*

Cars that come with a staggering list of standard features, yet have prices that start at the low end of the economy car spectrum.

Cars that combine low price and fuel economy with the kind of quality that has made Nissan one of the leading car manufacturers in the world.

In short, cars that drive, feel and look like expensive cars, but which pay close attention to the pressing obligations of an automobile in this era.

As you look through this book, you'll discover that the Nissan Sentra incorporates some of the most innovative automotive technology of our time. Aerodynamics wed to esthetics for beautifully efficient low-drag shapes. Front-wheel drive together with some very advanced thinking in space utilization for more useable interior room than you



thought possible. A high-performance overhead-cam hemi engine designed to move you and your family briskly down the road, and pass a lot of gas pumps while you're at it.

You'll also see features like rack-and-pinion steering, fully independent suspension and others you'd expect to find on much more expensive automobiles. They make Nissan's newest a pleasure to drive and they're all included in a price you'll find a very pleasant surprise.

So if you'd like fuel economy but worry about pep...

You'd like a new car but prices have you scared...

You'd like an economy car but worry about the room...

You'd like an affordable car that's equipped, not stripped...

And you'd like an economy car that's built to last...

Meet the new front-wheel-drive Nissan Sentra, including the gas-mileage champion of America.

It's the car you need.

58/43^{*}
EST HWY EST MPG

*Remember: Compare these estimates to the "estimated MPG" of other cars. You may get different mileage, depending on how fast you drive, weather conditions and trip length. Your highway mileage will probably be less. MPG Model not available in California.

Nissan Sentra 2-Door Sedans. Name your needs.

Any car setting out to please the family car market today had better be aware of some very distinct needs: the need for fuel efficiency, the need for economy, and the need for comfortable passenger room.

The Nissan Sentra is our answer to those needs. The foundation of the line is the Nissan Sentra 2-Door Sedan, which is really four different cars sharing the same body.

The Nissan Sentra MPG:

The mileage champion of our line is also the most fuel-efficient gas-powered car in America.** The MPG version of our high-performance E-type hemi engine is tuned for maximum mileage. Long-legged final drive gearing and a five-speed manual transaxle with overdrive help to get the most out of every gallon.

The Nissan Sentra Deluxe 2-Door Sedan:

This is the one that's designed to bring comfort and pure driving pleasure to the Ultra Mileage class. Like every Nissan Sentra, it has plenty of room for five passengers. The comfortable front bucket seats are fully reclining and there's full carpeting, plus amenities like a vanity mirror behind the passenger sun visor and tinted glass all around.

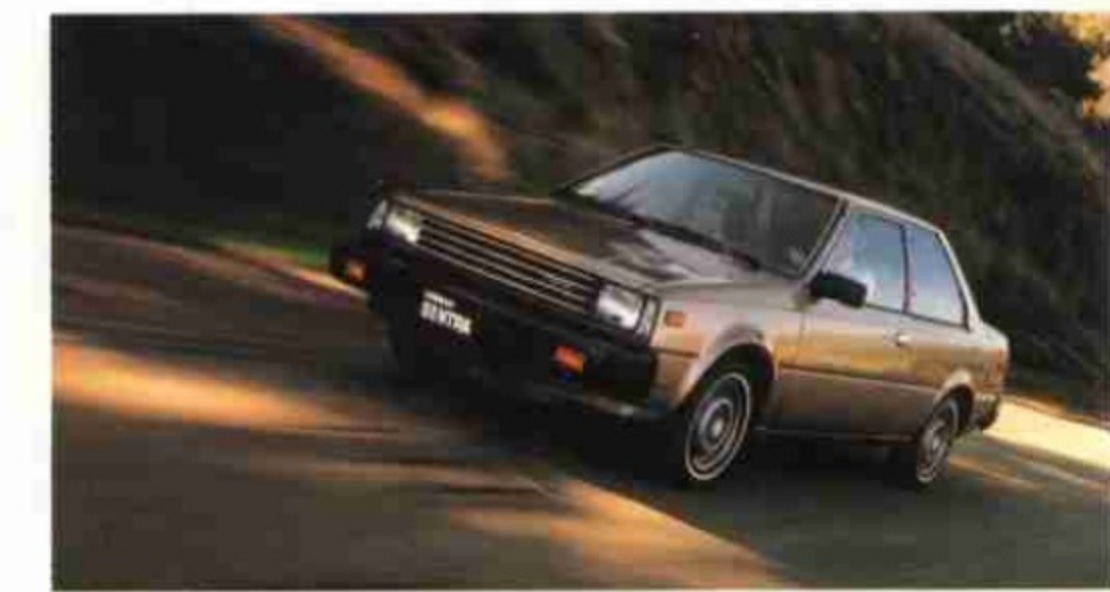
The Nissan Sentra Deluxe MPG:

If you want high mileage with all the trimmings, this is the car you need. This Deluxe MPG is a duplicate of the 2-Door Deluxe. But the engine and four-speed overdrive gear ratios are put together with an eye to fuel economy. In a sense, you get the best of both worlds: all the comfort and convenience features of the Deluxe Nissan Sentra, plus astonishing fuel economy.

The Nissan Sentra Standard.

This one puts the emphasis on price, without giving up the comforts. Although it comes with such features as electric rear-window defroster, power-assisted front disc brakes, 5-speed overdrive transaxle, rack-and-pinion steering, fully independent suspension and highback bucket seats (the driver's seat is fully reclining), it's still the price leader of the Nissan Sentra line.

*Not available in California.
**See EPA estimates, page 19.



Nissan Sentra 2-Door Sedan Deluxe, shown with optional wheel trim rings.

Just what you need: A big wagon in a small package.

When you need an economy wagon, you don't have to think small. The new Nissan Sentra Deluxe Wagon is loaded with big ideas, all wrapped neatly in an efficient and economical package.

With more than 23.5 cubic feet of load space in back (even with the seat back raised) and Nissan's new E-type 1.5-liter overhead-cam hemi engine mounted crossways up front between the drive wheels, it's set up to take on practically any job you

can think up. But it's still an Ultra Mileage car that whips past gas pumps with the greatest of ease.*

And it'll do it in style. Standard features include just about everything you'd want in a car. Thick, rich carpeting, even in the load area. Tinted glass all around. A rear-window washer and wiper. Fully reclining front bucket seats and split fold-down rear seats. There's a convenient console, even a resettable trip odometer.

Want your wagon even dressier? Not to worry. A special accessory package, including woodgrain trim, roof rack and stainless steel wheel-lip moldings will be available.

Best of all it's filled with the most valuable standard feature of all: Nissan quality. These days, that's just exactly the kind of car you need.

* See EPA estimates, page 19.



Nissan Sentra Wagon Deluxe, shown with optional sun roof, wheel trim rings and body side moldings.

Inside the Nissan Sentra: All the room you need.

One of the hardest things to find in the Ultra Mileage class is room.* But it's also one of the most important needs of any car buyer.

As a result, one of the biggest pleasures of our new car is the incredible amount of interior space. A roomy 98.6 cubic feet in the Hatchback Coupe, for instance. Enough to keep five passengers comfortably happy.

What's done with all that space is something else. The Hatchback Coupe XE is upholstered in plush velour. In Deluxe models the seats are upholstered in velour or handsome, long-lasting vinyl, depending on the color you choose. The seats recline, of course. And in two-door models there's a walk-in device. It's a release you pull to slide the passenger seat forward while simultaneously releasing the seatback.

It's there to ease the way for rear-seat passengers.

Next to the driver's seat in Deluxe and XE models is another handy lever. Lift it and it unlatches the trunk or hatch. Push it and it opens the fuel filler door.

No matter where you sit in a Nissan Sentra, you'll have a great view. Visibility was a high priority in its design, and it shows. The low beltline and vast window area gives

you an almost unobstructed view. In fact, there's a measured 306 degrees of clear visibility from the driver's seat.

The new Nissan Sentra. It's built with traditional Nissan quality and remarkable concern for your comfort. Because you want to save money, but you need to do it in style.

* See EPA estimates, page 19.



The Deluxe interior, with room for five passengers.

A. Deluxe instrument panel, with optional air conditioning and AM/FM stereo, puts all the controls at your fingertips. B. Your back-seat passengers will have plenty of legroom. C. Sun roof is optional on Hatchback Coupe XE and Wagon. D. Load-area light is standard on Hatchback Coupe XE. E. Convenient passenger-side vanity mirror is standard on all Nissan Sentra Deluxe models and the Hatchback Coupe XE.

Everything you need is right where you need it.

One of the first things you notice at the controls of a new Nissan Sentra is Nissan's meticulous attention to detail.

Your first glance tells you just how much care went into the design of this car. Not only is everything here, everything is in its place.

Directly in front of you, a main control center contains all the primary instruments. In the XE model

these include coolant temperature gauge, fuel gauge, MPH/KPH speedometer, tachometer, resettable trip odometer, low fuel warning light, rear window wiper/washer switch and vent directional controls for the dashboard.

Switches for headlights and windshield wiper/washer with intermittent cycle are conveniently grouped on stalk controls at the steering column.

Secondary controls are clustered in the center of the instrument panel for the greatest accessibility to both you and a passenger. Heating/cooling/ventilation slide controls, AM/FM stereo, and quartz clock are all here. This is also where you'll find the cigarette lighter, thoughtfully rimmed with orange light so you won't have to grope for it at night.

The dashboard has a coin holder, along with numerous storage nooks, crannies and trays.

And leave it to the Nissan Sentra to subtly illuminate the instruments with unique edge lighting in yellow.

No need goes unnoticed with Nissan.

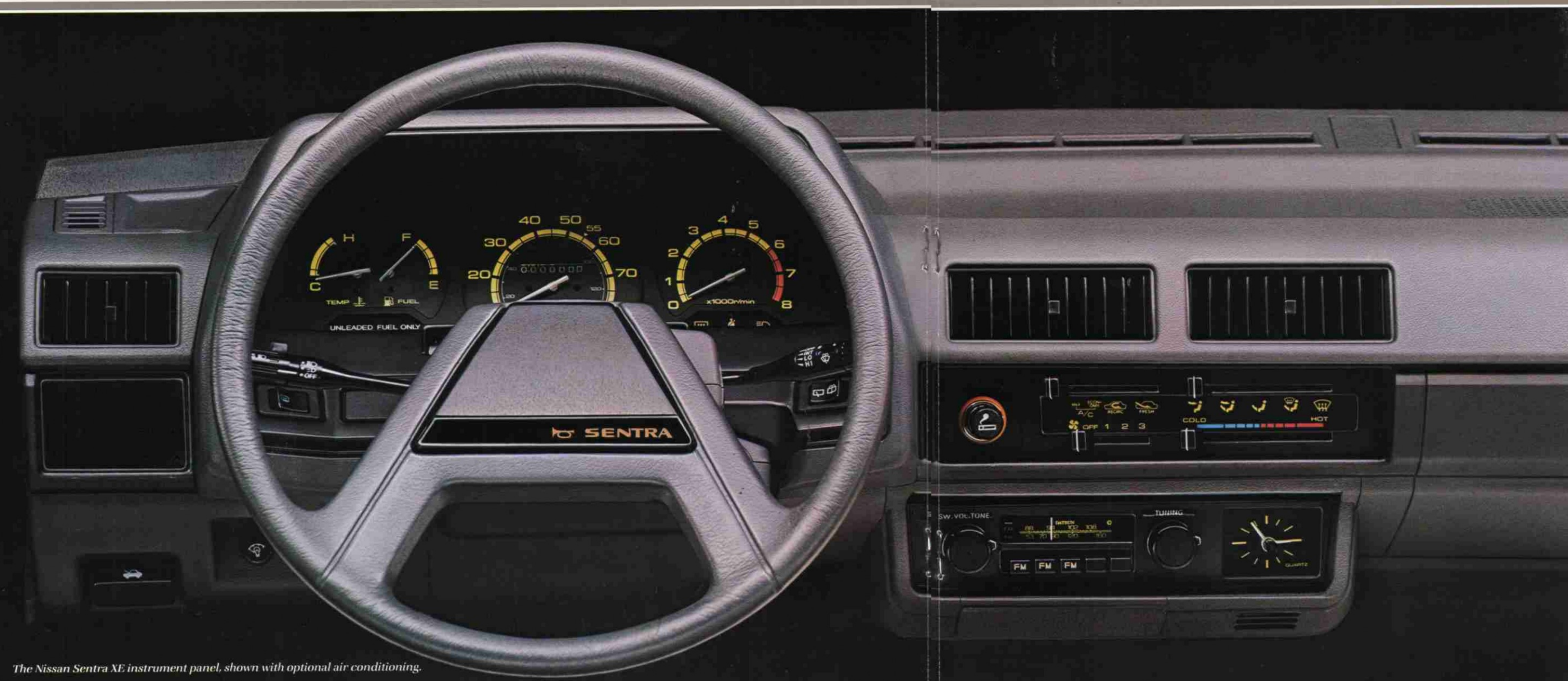
A SMART BRAKE VALVE

In every Nissan Sentra, there's a valve that isn't very big, but is very, very smart. It's called a brake proportioning valve. Here's how it works:

When you apply the brakes on any car, inertia tends to transfer weight forward. (You can prove it by running, then trying to stop abruptly. You'll feel the upper portion of your body trying to continue in motion, effectively shifting your balance forward.)



That weight transfer puts an extra load on the front brakes of your car, and that's where the brake proportioning valve comes in. It sends more of the braking power to the front brakes than to the rear brakes in just the right proportion. The result is balanced braking, tending to take the unnecessary adventure out of getting stopped.



A. Optional air conditioning features a new economy mode. B. Every Hatchback Coupe XE comes with AM/ FM stereo radio. C. Electronic tach is standard on the Hatchback Coupe XE. D. Hatchback Coupe XE comes with a quartz clock, standard.

OUR TRANSISTORIZED IGNITION SYSTEM

The ignition system of the Nissan Sentra has only one primary moving part. It's a spinning shaft that turns a reluctor through a series of magnetic fields inside the distributor. As it breaks each magnetic field, transistors send an extra-hot charge from the coil to a spark plug. There are two advantages to this system:



First, the maintenance is simpler and cheaper, since there are normally no parts to replace. Plugs last longer, too—usually 30,000 miles or more—because of the hot spark and the use of unleaded fuel.

Second, this system permits much finer control of the ignition timing. That means better performance and efficiency from your engine.*

The Nissan Sentra XE instrument panel, shown with optional air conditioning.

* See EPA estimates, page 19.

The Nissan Sentra 4-Door Sedan. A new answer to an old need.

There have been 4-Door Sedans just about as long as there have been automobiles. But if you think there are no surprises left, you haven't seen the Nissan Sentra. It's going to be a revelation.

Not just because it's new.

But because nothing about it is old. From its wind-cheating design to its robot-welded execution, this Nissan Sentra represents the very latest automotive technology of our day.

What's more, it's powered by our

new E-type hemi engine, a 1.5-liter overhead-cam design that's pounds lighter, inches more compact, yet more powerful than last year's most powerful Nissan engine of its size. And if you think the power moves you, wait until you check the mileage.*

Best of all, this is the kind of car you'll find yourself driving just for the pure sensory pleasure of it. Rack-and-pinion steering, front-wheel drive, fully independent suspension front and rear, and power-

assisted front disc brakes combine to provide the kind of responsive handling that smooths out the twisty stuff.

The Nissan Sentra 4-Door Sedan. It's everything you've always wished you could find in a five-passenger family car, plus one thing more: Nissan's traditional combination of quality, economy and value. Doesn't that sound like the kind of car you need today?

* See EPA estimates, page 19.



Nissan Sentra 4-Door Sedan Deluxe, shown with optional wheel trim rings and body side moldings.

Economical need not be dull.

If you've been hoping to find a car that combines virtue and temptation, the Nissan Sentra XE Hatchback Coupe is the one you need.

It was designed in a wind tunnel to cheat the wind up hills, down valleys, around esses. Yes, to work, too. And ultimately past pump after pump.*

That's the beauty of Nissan's new

E-type hemi engine. It's a 1.5-liter overhead-cam four that's designed to squeeze the maximum performance out of every hydrocarbon molecule.

A fully independent suspension, rack-and-pinion steering (power-assist is standard) and power-assisted front disc brakes assure agility on the road and in traffic. And front-wheel drive keeps it that way come rain or shine or snow.

Because XE stands for extra equipment, you can count on this version of the Nissan Sentra to come with more than its share of goodies. There's AM/FM stereo, quartz clock, tachometer, rear-window wiper and washer, detachable color-coordinated cargo cover, remote rear side-window openers and even dual remote-control tinted mirrors, to

mention just a few of the standard comforts.

In fact, just about the only optional choices left to make are air conditioning, the new three-speed automatic transaxle with its fuel-saving lock-up torque converter and a three-position lift-out sun roof.

* See EPA estimates, page 19.



A. Bright rectangular halogen headlights are standard on all Deluxe Nissan Sentra models and the Hatchback Coupe XE.
 B. Hatchback Coupe XE has tinted remote-controlled mirrors.
 C. Lever next to driver's seat opens fuel-filler door and unlatches trunk or hatch on Deluxe models and XE Coupe.
 D. This optional three-speed automatic transaxle comes with a lock-up torque converter that adds to its fuel efficiency.
 E. Hatchback Coupe XE has remote rear-window openers.

Nissan for 1982. The technology of excellence.

With every model year, Nissan's designers and engineers face an array of challenges. Some of them are old and familiar; some new and fascinating: how to make a more fuel-efficient engine; how to provide smoother ride; better handling; more comfort for your dollar.

In meeting the challenges, they bring to bear the full force of modern technology from disciplines as diverse as electronics and aerodynamics.

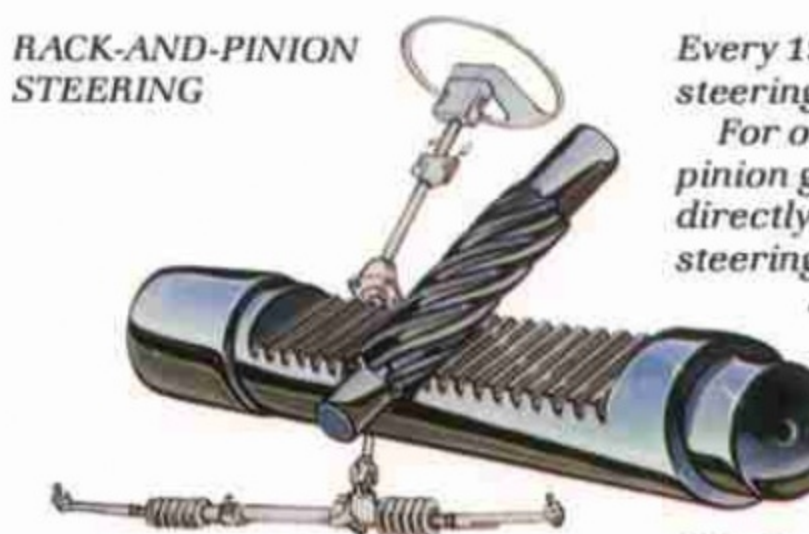
Their tools are microchips and wind tunnels. Computers and dynamometers. And most of all, the imagination of the human mind.

Throughout this book you have seen some examples of the results

they have achieved. Taken individually, these design features are valuable contributions to your enjoyment of your new car.

But taken as a whole, they represent something even more promising. They represent what can be accomplished when technology is harnessed to the pursuit of excellence.

RACK-AND-PINION STEERING



Every 1982 Nissan Sentra comes with rack-and-pinion steering, and that's good for some important reasons. For one, the steering is light and precise. A small pinion gear at the end of the steering column operates directly on a "rack" of gear teeth that connects to the steering arms. Turn the wheel one notch of the pinion and the rack moves exactly one notch. No more, no less. It's ideal for a car like this. For another thing, the system is direct so it gives you superb road feel. Your sense of control isn't lost in a sea of mush. Lightness with control. That's a very desirable bit of teamwork.



A. The huge load compartment in the Wagon Deluxe makes it a whole lot of car in an economical and efficient package. B. A convenient rear-window wiper and washer are standard equipment on the Hatchback Coupe XE and the Wagon Deluxe.

NISSAN'S NEW HIGH-POWERED LIGHTWEIGHT ENGINE

Conventional wisdom has it that increased fuel efficiency exacts a price in lower engine power.

But the 1.5-liter overhead-cam engine in the new Nissan Sentra delivers more power from less gas than our most powerful 1.5-liter engine last year. It's also much lighter, considerably smaller and a lot quieter.

Some of the ways that was achieved include quiet rubber timing belt, new aluminum rocker arms and a special intake port design that swirls the fuel into the combustion chamber.

More power, less weight, better mileage and less noise, all in the same new engine. So much for conventional wisdom.



1 NISSAN SENTRA'S FRONT-WHEEL DRIVE

One of the reasons for the generous room in the five-passenger Nissan Sentra is its front-wheel-drive design. Because the engine is mounted crosswise, the panel between the engine compartment and the passenger compartment is far forward of its usual position, leaving more room for passengers. Also, the only "tunnel" is a small one to stiffen the floor pan and provide passage for hydraulic lines, wiring and the exhaust pipe.

2 AN AUTOMATIC THAT SAVES GAS

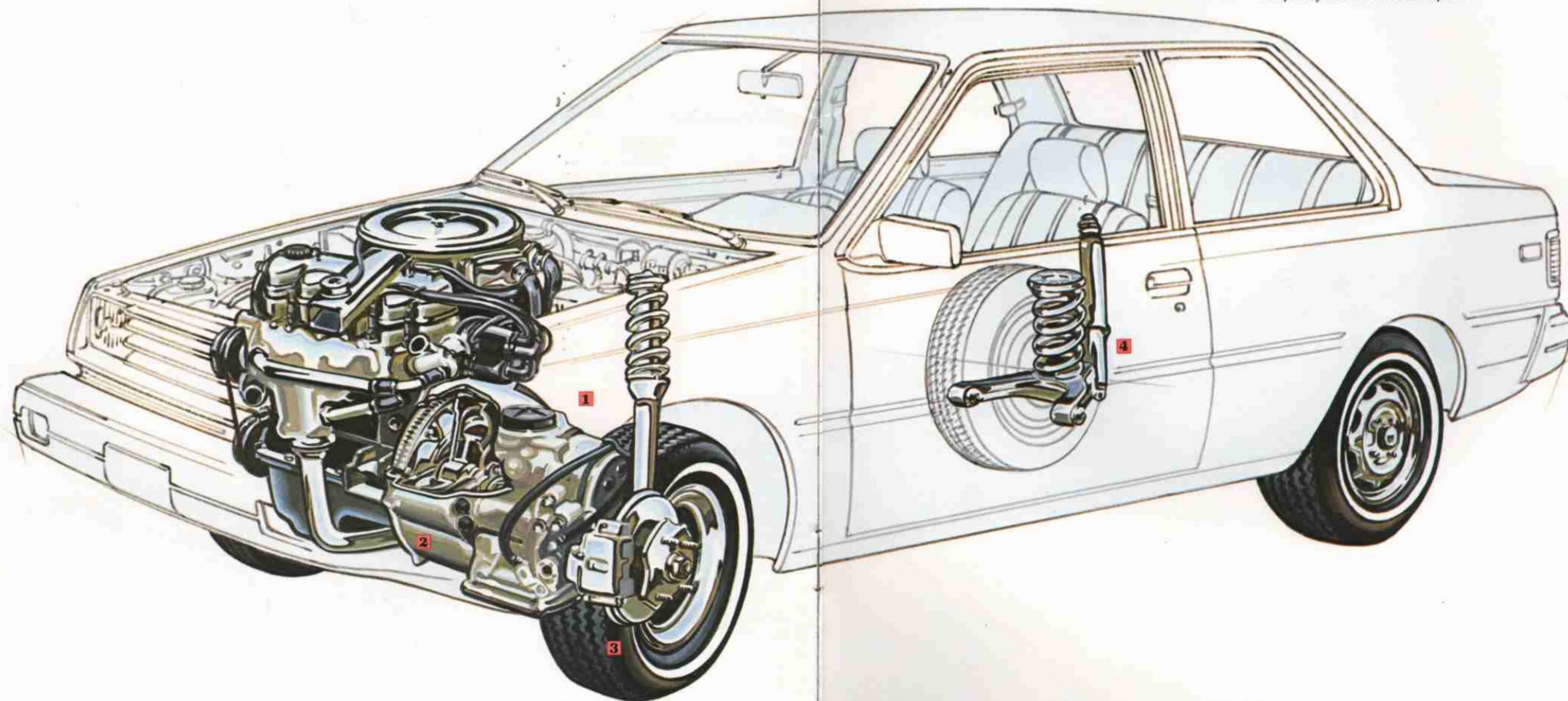
The Nissan Sentra has an optional automatic transaxle that's not only snugged up next to the engine to save space, but has a lock-up torque converter to save fuel.* When the car reaches road speed (around 40 mph), a mechanical clutch locks up the connection between the engine and the drive gears. It's more fuel efficient than other automatics with ordinary torque converters.

3 POWER-ASSISTED FRONT DISC BRAKES

Every Nissan Sentra has power-assisted disc brakes in front, where most of the braking is done. That's good because disc brakes are self-drying in wet weather and self-adjusting. Discs are also lighter than drums, which contributes to handling and fuel efficiency.

4 INDEPENDENT REAR SUSPENSION

Independent rear suspension permits each rear wheel to react to bumps on its own. On cars without such a system, a bump deflects the whole rear suspension as a unit and both tires lose a little bit of their road contact. Also, because the mass of one wheel reacting to a bump is less than the whole rear suspension reacting, it's easier to control uncomfortable jolts to the passengers. It's just one more example of the commitment to quality that sets Nissan apart.



C. The Hatchback Coupe XE load area is roomy and carpeted. D. The trunk in Sedan models accommodates a lot of luggage.

NEGATIVE SCRUB-RADIUS STEERING GEOMETRY

Most cars have positive scrub-radius steering, which gives them a tendency to "pull" the steering wheel if you have a flat, if you brake while you're turning the steering wheel or if one of the front tires hits a slick spot.

Nissan's negative scrub-radius steering solves that. Look at the pictures here and you'll see that the difference is the angle of the steering pivot.

If the pivot line points toward a spot inside of the place where the tire contacts the road, you've got positive scrub-radius (left picture) and a car that can't try to steer itself in the conditions mentioned above.

But if the pivot line points outside that contact patch, as in the Nissan Sentra, you've got negative scrub-radius (right picture) and a car that leaves the steering up to you.



* See EPA estimates, page 19.

From Nissan with pride.

Nissan Motor Co., Ltd., manufacturer of Datsun cars and trucks, Nissan Stanza and new Nissan Sentra, has a firm commitment to quality. The depth of that commitment is apparent in every vehicle we sell.

It starts with a concept that takes into account the function of the car, the comfort of the user and the kind of driving that will be done with it.

It includes design excellence. The kind of technical achievements and

innovations you've seen throughout this brochure. Nissan's engineers never stop looking for ways to apply the latest technology to the car you'll be driving.

And it includes the kind of meticulous construction and relentless testing that go into every single vehicle we sell. Production lines aren't just a chain of individual jobs. They're teamwork, with every person on the line entitled to stop production if a problem comes up.

Nissan workers have the right—indeed, are expected—to check the quality of the pieces they're given to work on. And rigorous tests, including dumping tons of high-pressure water on the finished vehicle, are conducted on every single car and truck they make.

Which is why we say we are driven to offer you vehicles built to last. The kind of cars you've come to expect from us. The kind of cars you need.



Genuine Datsun Accessories: Your Assurance of Quality.

For nearly fifty years, Nissan Motor Co., Ltd., has been building Datsun and Nissan cars and trucks with a single-minded devotion to quality.

It's this kind of drive and dedication to excellence that's your assurance of quality in every Genuine Datsun Accessory.

EXTERIOR ACCESSORIES

A. 4-Seasons Roof Rack. Like having an extra trunk on top. (Bike and ski attachments available.)

B. Remote-Control Passenger-Door Mirror. Double your viewing with a great-looking mirror.

C. Halogen Fog Lights. Slice through the fog like a knife. Helpful in any weather. (NOT SHOWN.)

Rear Spoiler. Standard on the MPG Model, an eye-catching addition to other Nissan Sentras.

Resin Glaze and Touchup Paint. Helps keep your finish looking showroom new.

Car Cover. A custom-fitted cover to keep away salt air, smog and weather.

Deck Rack. Made of rugged stainless steel and polished chrome.

Wagon Woodgrain Trim. Hard to believe it isn't wood but tough, durable vinyl.

Rocker Moldings and Wheel Lip Moldings. Stainless steel for durability and looks.

Wagon Roof Rack. Give your Nissan Sentra Wagon even more carrying capacity.

Pillar-Mount Antenna. Slides into the windshield pillar. One-piece solid steel.

Engine Block Heater. An easy way to ensure fast starts in cold weather. Just plug it into an electrical outlet.

INTERIOR ACCESSORIES

D. Digital Clock. This accurate quartz time/date clock counts months, days, hours, minutes and seconds. (SHOWN ELSEWHERE)

Air Conditioning. Fully integrated. Includes new "economy" cycle for fuel efficiency. (NOT SHOWN.)

Floor Mats. Carpeted or rubber mats that are easy-to-clean, long-lasting, color-coordinated and beautiful.

AUDIO ACCESSORIES

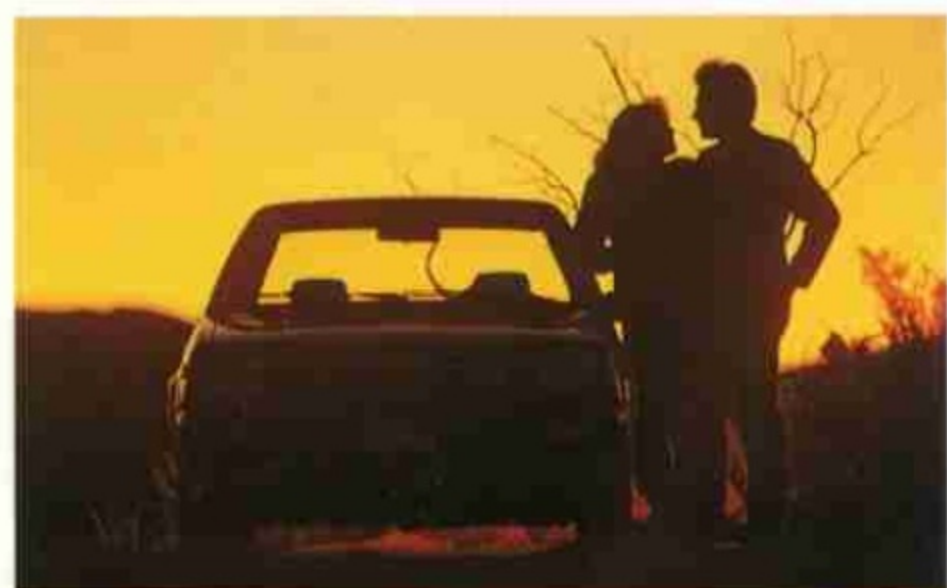
E. Cassette Tape Deck. Order the cassette tape deck and get more than a way to program your own listening pleasure; you also get a solid enclosure for mounting with built-in tape storage compartment.

F., G., H. Radios. AM, AM/FM stereo and AM/FM stereo with cassette tape deck add to your driving pleasure. (NOT SHOWN.)

Speaker Kits. Look and sound as if they belong in your living room.

	2-Door Standard	2-Door MPG ¹	2-Door Deluxe MPG ²	2-Door Deluxe	4-Door Deluxe	Wagon Deluxe	Coupe XE
MECHANICAL FEATURES							
Engine							
1.5-liter (1,487cc) 4-cyl. OHC	STD	STD	STD	STD	STD	STD	STD
Catalytic converter	STD	—	—	STD	STD	STD	STD
3-way catalytic converter	—	STD	STD	—	—	—	—
Electrical							
Transistorized ignition system	STD	STD	STD	STD	STD	STD	STD
Solid-state voltage regulator	STD	STD	STD	STD	STD	STD	STD
Maintenance-free battery, 12V, 60AH	STD	STD	STD	STD	STD	STD	STD
Transmission							
4-speed overdrive manual all-synchromesh with 3.550 final drive ratio	—	—	STD	—	—	—	—
5-speed overdrive manual all-synchromesh with 3.789 final drive ratio	STD	—	—	STD	STD	STD	STD
5-speed overdrive manual all-synchromesh with 3.550 final drive ratio	—	STD	—	—	—	—	—
3-speed automatic with lock-up torque converter and 3.600 final drive ratio	—	—	—	OPT	OPT	OPT	OPT
Brakes, Steering & Suspension							
Power-assist front disc/rear drum brakes	STD	STD	STD	STD	STD	STD	STD
Rack-and-pinion steering	STD	STD	STD	STD	STD	STD	STD
Power-assisted steering	—	—	—	OPT ³	OPT ³	OPT ³	STD
Fully independent suspension: MacPherson strut front; semi-trailing link rear	STD	STD	STD	STD	STD	STD	STD
Wheels & Tires							
Bright 4 1/2 J13 styled steel wheels	STD	STD	STD	STD	STD	STD	STD
Bright trim rings and hub caps	—	—	—	—	—	—	STD
6.15x13 4-ply rated blackwall tires	STD	—	—	—	—	—	—
155 SR13 steel-belted radial whitewall tires	—	—	STD	STD	STD	STD	—
155 SR13 steel-belted radial blackwall tires	—	STD	—	—	—	—	—
175/70 SR13 steel-belted radial tires with raised white letters	—	—	—	—	—	—	STD
EXTERIOR FEATURES							
Mirrors							
Black patch door mirror	STD	STD	STD	STD	STD	STD	—
Dual remote-control black patch tinted mirrors	—	—	—	—	—	—	STD
Wipers/Washers							
2-speed windshield wiper/washer	STD	STD	STD	STD	STD	STD	STD
Rear-window wiper/washer	—	—	—	—	—	STD	STD
Intermittent wiper feature	—	—	—	—	—	—	STD
Windows							
Clear glass all around	STD	STD	—	—	—	—	—
Tinted glass all around	—	—	STD	STD	STD	STD	STD
Roll-down rear side windows	—	—	—	—	STD	STD	—
Flip-out rear side windows	STD	STD	STD	STD	—	—	STD
Remote rear-window openers	—	—	—	—	—	—	STD
Other							
Rectangular headlights	STD	STD	STD	STD	STD	STD	STD
Halogen headlights	—	—	STD	STD	STD	STD	STD

	2-Door Standard	2-Door MPG ¹	2-Door Deluxe MPG ²	2-Door Deluxe	4-Door Deluxe	Wagon Deluxe	Coupe XE
EXTERIOR FEATURES (cont.)							
Black urethane-coated, impact-absorbing bumpers	STD	STD	STD	STD	STD	STD	STD
Three-position lift-out sun roof with inner sun screen, wind deflector and storage bag	—	—	—	—	—	OPT	OPT
Keyless locking of doors	STD	STD	STD	STD	STD	STD	STD
Corrosion protection	STD	STD	STD	STD	STD	STD	STD
INTERIOR FEATURES							
Instruments							
Speedometer	STD	STD	STD	STD	STD	STD	STD
Trip odometer	—	—	STD	STD	STD	STD	STD
Tachometer	—	—	—	—	—	—	STD
Fuel gauge	STD	STD	STD	STD	STD	STD	STD
Coolant temperature	STD	STD	STD	STD	STD	STD	STD
Quartz clock	—	—	—	—	—	—	STD
Warning Lights							
Parking brake/low fluid	STD	STD	STD	STD	STD	STD	STD
Charging	STD	STD	STD	STD	STD	STD	STD
Hazard flasher	STD	STD	STD	STD	STD	STD	STD
High beam	STD	STD	STD	STD	STD	STD	STD
Oil pressure	STD	STD	STD	STD	STD	STD	STD
Rear-window defroster	STD	STD	STD	STD	STD	STD	STD
Seat-belt warning	STD	STD	STD	STD	STD	STD	STD
Low fuel	—	—	—	—	—	—	STD
Stoplight/taillight bulb failure	—	—	—	—	—	—	STD
Heating/Ventilation							
Flow-through ventilation	STD	STD	STD	STD	STD	STD	STD
Bi-level heater/defroster with 3-speed fan	STD	STD	STD	STD	STD	STD	STD
Side-window defoggers	STD	STD	STD	STD	STD	STD	STD
Electric rear-window defroster	STD	STD	STD	STD	STD	STD	STD
Seating							
Lowback front bucket seats with adjustable head restraints	—	—	STD	STD	STD	STD	STD
Highback front bucket seats	STD	STD	—	—	—	—	—
Fully reclining backrest	STD ⁴	STD ⁴	STD	STD	STD	STD	STD
Walk-in device	—	—	STD	STD	—	—	STD
Split fold-down rear seat	—	—	—	—	—	STD	STD
Convenience							
Cargo light	—	—	—	—	—	—	STD
Inside hood release	STD	STD	STD	STD	STD	STD	STD
Warning chimes, seat-belt and keys	STD	STD	STD	STD	STD	STD	STD
Flash-to-pass switch on headlights	STD	STD	STD	STD	STD	STD	STD
Ash trays, front and rear	STD	STD	STD	STD	STD	STD	STD
Cigarette lighter	—	—	STD	STD	STD	STD	STD
Center console and front storage ¹	OPT	OPT	OPT	OPT	OPT	OPT	STD
Color-coordinated removable rear cargo cover	—	—	—	—	—	—	STD
Passenger-side vanity mirror	—	—	STD	STD	STD	STD	STD



	2-Door Standard	2-Door MPG ¹	2-Door Deluxe MPG ²	2-Door Deluxe	4-Door Deluxe	Wagon Deluxe	Coupe XE
INTERIOR FEATURES (cont.)							
Other							
AM/FM stereo	OPT ⁵	OPT ⁵	OPT ⁵	OPT ⁵	OPT ⁵	OPT ⁵	STD
Full carpeting	—	—	STD	STD	STD	STD	STD
Color-coordinated 2-spoke steering wheel	STD	STD	STD	STD	STD	STD	—
Wrapped-look, color-coordinated 2-spoke steering wheel	—	—	—	—	—	—	STD
Day/night rear view mirror	—	—	STD	STD	STD	STD	STD
Rear view mirror	STD	STD	—	—	—	—	—
Child-safety rear door locks	—	—	—	—	STD	STD	—
SAFETY FEATURES							
Energy-absorbing steering column	STD	STD	STD	STD	STD	STD	STD
Seat belts for 5 passengers	STD	STD	STD	STD	STD	STD	STD
Front seat-belt warning light	STD	STD	STD	STD	STD	STD	STD
Dual brake system	STD	STD	STD	STD	STD	STD	STD
Impact-absorbing bumpers	STD	STD	STD	STD	STD	STD	STD
4-way hazard warning lights	STD	STD	STD	STD	STD	STD	STD
Steering-column lock	STD	STD	STD	STD	STD	STD	STD
Padded instrument panel	STD	STD	STD	STD	STD	STD	STD
Backup lights	STD	STD	STD	STD	STD	STD	STD
Padded sun visors	STD	STD	STD	STD	STD	STD	STD
Front and rear side-marker lights	STD	STD	STD	STD	STD	STD	STD
Safety door locks	STD	STD	STD	STD	STD	STD	STD
DIMENSIONS AND WEIGHT¹							
		2-Door Deluxe	4-Door Deluxe	Wagon Deluxe	Coupe XE		
Wheelbase (in.)		94.5	94.5	94.5	94.5		
Length (in.)		167.3	167.3	172.2	167.3		
Width (in.)		63.7	63.7	63.7	63.7		
Height (in.)		54.5	54.5	53.5	53.3		
Turning diameter, curb-to-curb (ft.)		29.5	29.5	29.5	29.5		
Curb weight* (lbs.)		1830	1850	1950	1890		
Fuel capacity (gal.)		13.2 ⁷	13.2	13.2	13.2		
<small>*MPG model not available in California. ²Deluxe MPG not available in California. ³Driver's seat only. ⁴Required for cassette deck option. ⁵Part of convenience group, including AM/FM stereo and power-assisted steering. ⁶Vehicles with optional equipment or California emissions equipment will be slightly heavier. 2-Door Standard: 1820 lbs. 2-Door MPG: 1750 lbs. 2-Door Deluxe MPG: 1830 lbs. ⁷MPG model: 10.5.</small>							
1982 E.P.A. ESTIMATED NISSAN SENTRA MPG							
	MPG	Sedans and Coupe			Wagon		
		5-speed	4-speed	5-speed	Auto	5-speed	Auto
49-States HWY MPG/EST MPG	58/ (43)	55/ (41)	50/ (35)	39/ (30)	47/ (33)	38/ (30)	
California HWY MPG/EST MPG	N.A.	N.A.	48/ (33)	35/ (27)	45/ (31)	34/ (27)	
<small>1982 E.P.A. estimates. Remember: Compare these estimates to the "estimated MPG" of other cars. You may get different mileage, depending on how fast you drive, weather conditions and trip length. Also remember that your actual highway mileage will probably be less than the EPA estimated highway fuel economy.</small>							
<small>All illustrations and specifications in this catalog are based on the latest product information available at time of publication. Nissan Motor Corporation in U.S.A. reserves the right to make changes at any time, without notice, in prices, colors, materials, equipment, specifications and models, and to discontinue models or equipment. For information on additional options and accessories, contact your Datsun dealer. All specifications, options and accessories in this catalog apply to the 49 states. Specifications, options and accessories may differ in Hawaii, U.S. territories and other countries.</small>							

Built by Nissan, sold by your Datsun Dealer: a full selection of quality cars and trucks.



Datsun 310. A sporting approach to front-wheel drive.



Datsun Maxima. Luxury with gasoline or diesel power.



Nissan Stanza. The shape of things to come.



Datsun 280-ZX. Awesome and then some for 1982.



Datsun 200-SX. Sophistication that speaks for itself.



Datsun Trucks. From one tough customer to another.

DATSUN
WE ARE DRIVEN
PRODUCT OF NISSAN

