

Ford
Falcon
Futura
and
GLI





THE SPIRIT OF CONTINUOUS IMPROVEMENT.



| | |
|---------------------|----|
| Introduction | 5 |
| Engineering | 6 |
| Interior Design | 10 |
| Safety and Security | 12 |
| Accessories | 11 |
| Options | 14 |
| FordCare | 14 |

Falcon Futura sedan in Regency Red, Falcon Futura wagon in Arctic Blue.



INTRODUCTION

There's a spirit at Ford. Driving. Dynamic. Ever challenging. A spirit of continuous improvement. It fuels our constant pursuit of higher standards of vehicle quality, safety, efficiency and owner satisfaction.

This spirit has inspired the latest Falcons. They introduce significantly revised suspension and steering systems. They have engines that run smoother and quieter.

They bring you new ideas like "Smart Tint" glass. And today's Falcon Futura and GLi have interiors that offer more comfort and refinement than ever before.

So come and discover how immensely enjoyable the newest Falcon sedans and wagons really are.

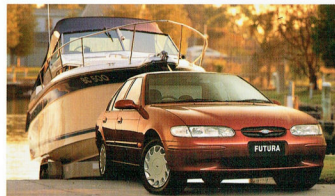
Making the latest generation of Falcons the safest, the finest handling and the most rewarding to drive that we've ever built... that's the spirit at Ford.



A smooth shifting 5-speed manual transmission is standard on Falcon GL3 sedans and wagons and Futura sedan. Futura wagon is fitted with an advanced electronically controlled 4-speed automatic transmission (optional on the other models). It features "normal" and "economy" modes for greater efficiency.

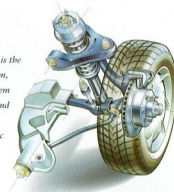
Ford's advanced 4.0 litre 6-cylinder and 5.0 litre V8 engines are computer-managed to deliver high power and torque outputs with efficiency and smoothness.

The 4.0 litre six develops 157 kW @ 4900 rpm. The Ford V8 produces 165 kW @ 4500 rpm.



Falco's got the power and strength to do all the things you want to do - like tow that boat or van or haul a trailer.

Falco's front suspension is the reliable short and long arm, long spindle (SLAS) system tuned to keep harshness and road noise at low levels. Fade resistant 4-wheel disc brakes provide efficient stopping power.



SPIRITED PERFORMANCE.

ENGINEERING

One drive and you'll appreciate the improvements we've made to the steering and suspension geometry.

Straight off you'll notice how Falcon soaks up the

bumps, yet remains taut and ever-responsive. Moving into a corner, body roll is minimal and stability is maintained, even with every seat occupied and the boot full of luggage.

The handling matches the capability of Falcon's powerful and efficient 6-cylinder and V8 engines which run more smoothly and quietly than ever before.

The power rack and pinion steering makeover

delivers an excellent feeling of control - it's quick and responsive, with a very positive 'on-centre' feel. You're left in absolutely no doubt that you're driving a car - or wagon - that truly enjoys the road!



**Console covering may vary from that shown*

©2005 Ford Motor Company



Relax – Futura gives you cruise control.



Cup holder convenience.* Anyone for coffee?



Futura's quality 6-speaker 40 watt audio system.



Steering column adjusts for personal comfort.



Quality time – Futura's digital clock.



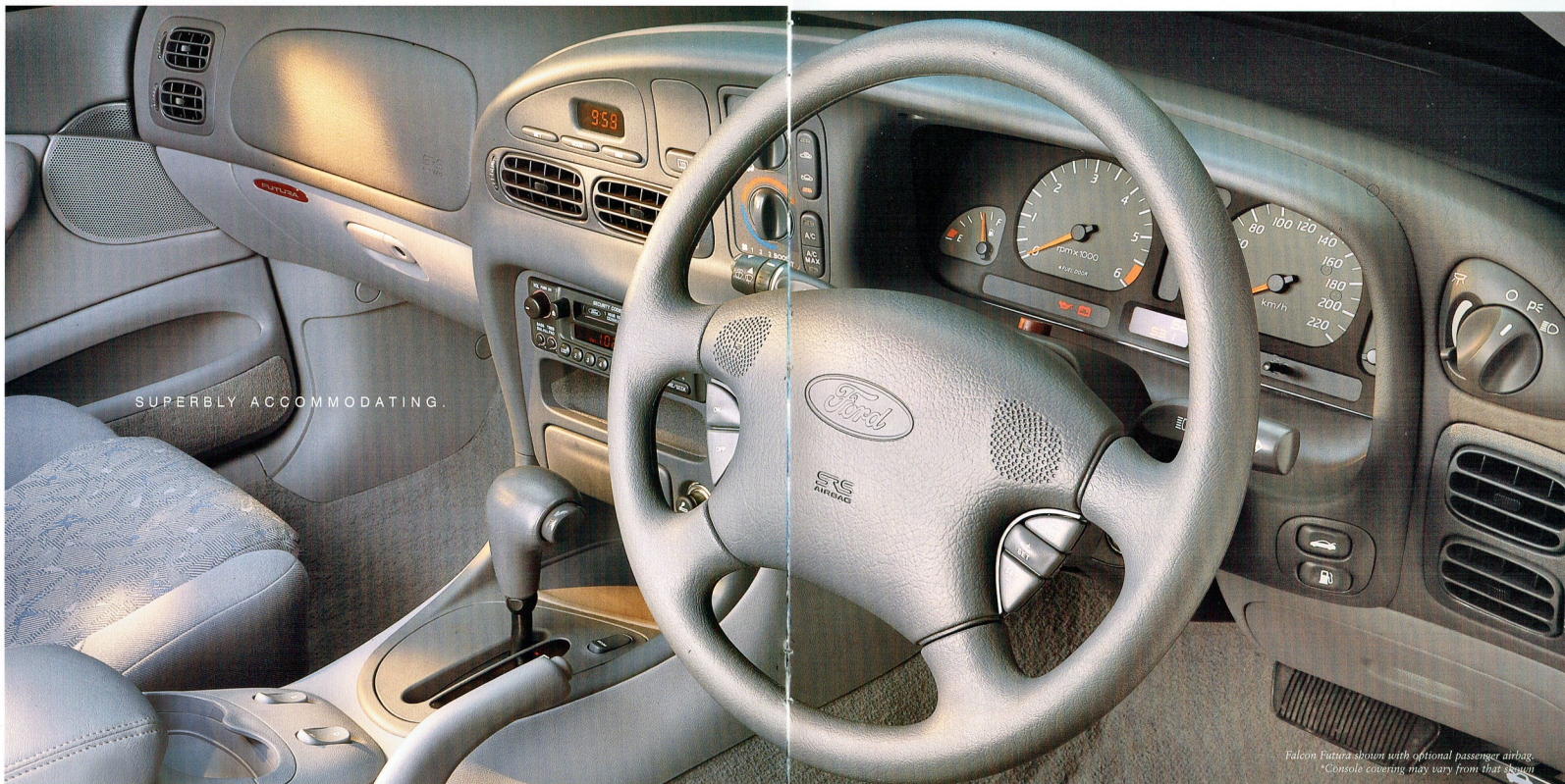
Vent and heat controls (air conditioning optional).



Front seats have plenty of comfort controls.*



60/40 split fold backrest handles awkward objects.



SUPERBLY ACCOMMODATING.

INTERIOR DESIGN

In so many ways, you'll find Ford Falcon really gets it right. Right down to the smallest details.

Falcon has always been big on comfort. Now, both

front seats have vertically adjustable lumbar support. Seat belts and switches are colour-keyed to the interior. Seat fabrics and door trims feature up-to-the-minute designs, the instrument panel has a fresh new look.

Speed sensitive intermittent windscreen wipers are included for the first time on Futura. And if you need a mobile phone, Falcon is wired up ready for one.

Has someone left a reading light on? No worries,

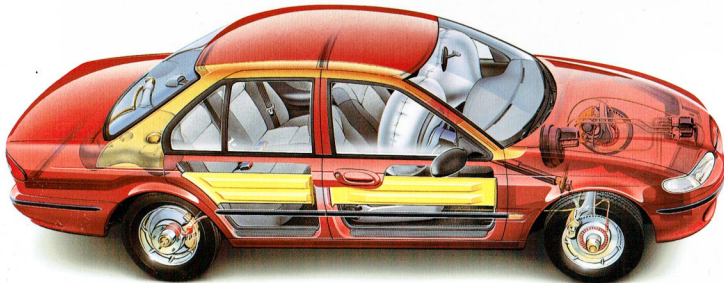
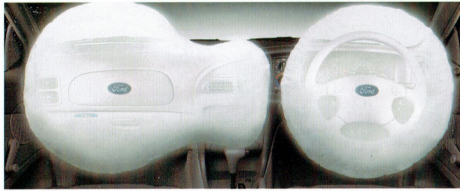
the lamp will turn off automatically, helping to save the battery. And you're surrounded by "Smart Tint" glass that has a protection rating of UPF 15+. All to ensure you feel much more comfortable in a Falcon.

Falcon Futura shown with optional passenger airbag.
*Console covering may vary from that shown.

Some people feel safer driving a full size car. With Ford, safety is more than a perception. It's a fact. It's the product of a commitment that has seen Falcon evolve into one of the safest cars on the road.

Falcon is still the only range of Australian-built cars with a driver's airbag fitted as standard equipment. A new generation ABS is also standard on Futura and available as an option on GLi.

Falcon Futura and GLi are equipped with a standard driver airbag. (Left front passenger airbag optional.) Sensors in the vehicle detect the severity of an impact. If the collision meets the criteria for deployment, the driver airbag and passenger airbag, if fitted, will inflate and be released.



The passenger compartment features side intrusion beams, and integrated front and rear crumple zones.

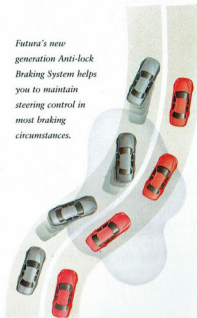


Falcon has 'best in class' roof crush strength.



Front seat belt lockers minimise payout of seat belt webbing in extreme conditions. (Futura front seat belts are height adjustable.)

Futura's new generation Anti-lock Braking System helps you to maintain steering control in most braking circumstances.



Smartlock engine immobilisation and keyless entry on all Falcons.

When these accessories are fitted by your Authorised Ford Dealer before you take delivery, they're covered, reassuringly, by Ford's 3 year/100,000 km 'Bumper to Bumper' Warranty* – just like your new Falcon itself.

Your Authorised Ford Dealer can help you select from a wide range of Ford Approved Accessories that have been designed to add greater functionality, more protection or even a touch of personal flair to your new Falcon.



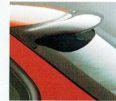
CRUISE CONTROL
(Standard on Futura)
Helps to maintain a constant pre-set speed. Disengages when brakes or clutch are applied.



BOOT LINER
(Optional only)
Removable moulded boot liner helps to protect boot carpet from wear and soiling. Resistant to most chemical and liquid spills.



FRONT SUNVISOR
Adds an extra touch of style while helping to provide protection from heat and glare.



REAR SUNSHADE
Made from dark grey translucent acrylic and offers practical benefits with an extra splash of style.



CARPET MATS
Help protect your Falcon carpet from wear and soiling with heavy duty mats embossed with Ford logos.



SPORTS ROAD WHEELS
Add that extra touch of style and performance with these alloy wheels designed for Falcon.



1600 kg TOWBAR*
Designed to comply with Australian Design Rule (ADR 62) specification. (Rated at 1200 kg for manual vehicles.)



1600 kg HEAVY DUTY TOWBAR*
Addition of a load levelling hitch (purchased separately) increases capacity to 2300 kg. Designed to comply with ADR 62. Suitable for automatic vehicles only.



SECURITY SYSTEM
The only car alarm system approved by Ford. Designed to integrate with Falcon's standard Smartlock keyless entry and engine immobilisation system.

ELECTRIC AERIAL

Extends when radio is switched on while travelling, or using keyless play. Retracts when cassette player is selected, audio system or ignition is switched off.

WAGON CARRY BARS WAGON ROOF RACK

Add extra carrying versatility to your Falcon wagon.

WAGON CARGO BARRIER

Helps to keep luggage in place in an emergency.

WAGON DUST DEFLECTOR

Especially designed for Falcon Wagon to help prevent dust from accumulating on the rear window and obscuring vision.

TRIP COMPUTER

Useful driving aid calculates data relating to speed and fuel consumption, including distance to empty, average speed, average fuel consumption, etc.

FIRE EXTINGUISHER

Important safety accessory. Supplied with mounting bracket.

DISABLED DRIVERS KIT

Makes driving easier for those with certain disabilities. Available free of charge with new vehicle purchase.

LOAD LEVELLING HITCH

(Suitable for automatic vehicles only.) Specially designed to suit the Ford heavy duty tow bar (to tow 2300 kg*).

AIR CONDITIONING

CFC-free unit provides relief from heat and rapid de-misting.

*Subject to State and Territory regulations.



Falcon GLi fitted with the fully airbag compatible Smart Ball Bar, bonnet protector, headlamp guards, driver's weathershield, front and rear mudflaps, carry bars and rear louvre.

Tickford Vehicle Engineering, Ford's partner in performance-enhanced vehicles, offer these options. They're backed by the Ford 3 year/100,000 km 'Bumper to Bumper' Warranty* if fitted prior to delivery.



on petrol or LPG! Developed jointly by Ford and TVE and tuned specifically for Falcon, this LPG system is the only LPG fitment covered by the Ford 3 Year/100,000 km 'Bumper to Bumper' Warranty.* Available on automatic sedans and wagons.

Sports suspension.

Stiffer front and rear springs, sports tuned shock absorbers and bushes and revised wheel alignment.

16" wheels and tyres.

The option of a 16" x 7" alloy wheel design fitted with a high performance Yokohama 510 series 225/50 VR 16 tyre for exceptional wet and dry road grip. (Available only with optional Sports Suspension.)

Momo steering wheel.

Sculpted leather bound steering wheel for the ultimate in feel and control. (Not available with cappuccino trim.)

LPG.

With this LPG system, Falcon delivers the same power

2300 kg rated tow pack*

(auto. transmission only).

Heavy Duty Towbar and Load Distributing Hitch, trailer wiring kit, revised turn signal flasher, transmission oil cooler.

Heavy duty tow pack*.

For those who already have a 2100 kg or 2300 kg Load Distributing Hitch. Heavy Duty Towbar (2300 kg rated when used with 2300 kg Load Distributing Hitch), trailer wiring kit, revised turn signal flasher, transmission oil cooler and a 1600 kg rated capacity plug-in tow ball mount.

* Subject to State and Territory regulations.

FORDCARE. OUR COMMITMENT TO YOUR SATISFACTION



Fordcare.

Fordcare is a whole range of programs, products and services designed to make Ford owners the most satisfied motor vehicle owners in Australia.

The well-being of your Ford is supported by these warranties and services:



New Vehicle Warranty.*

Covers your Ford against defects in factory materials or workmanship for the first 3 years or 100,000 km - whichever occurs first. When fitted at or prior to the time of vehicle delivery, Ford Approved Accessories are also covered by the Ford 3 Year/100,000 km 'Bumper to Bumper' Warranty.



Five Year Perforation Corrosion Warranty.*

Covers the original vehicle's body against perforation corrosion for the first five years of its life.



Lifelong Panel Warranty.*

Covers replacement of outer body panels against perforation corrosion for the life of the vehicle.



Ford Customer Assistance Centre.

We're always happy to hear from you and you will find us responsive to your needs. *Customer Assistance Centre - Telephone 1800 333 306 (TOLL FREE), in Melbourne telephone 9359 7023.*



Ford Credit Financial Services.

Ford Leasing and Red Carpet Options are available to approved applicants of Ford Credit Australia Limited. Enquire at your Authorised Ford Dealer.



Fleet Communication Centre.

Our Fleet Communication Centre is available to assist fleet customers with information on Ford products and services. Telephone 1800 673 207.

Further information on these warranties and services may be obtained from your Authorised Ford Dealer.

www.ford.com.au

*Conditions and exclusions apply. See your Authorised Ford Dealer for details.