

2007 Nissan Sentra



Shake up expectations. Shift into 6th or go gearless with CVT. Sentra's different. It's all about you. Invite your inner circle, but live by your own soundtrack. Remix road-tripping and pack with gusto. Stash your laptop in the glove compartment. Go wireless and keyless, enjoying up to 36 mpg¹. Grab friends, go from AM to PM and back again. Playing it smart with 6 standard air bags. Redesigned for your life – everybody in. The next generation Nissan Sentra.

SHIFT_anticipation



- 06 Mobile Knapsack
- 12 Hands-free
- 14 It's All About the Music
- 18 Fun to Drive
- 20 You Can Only Choose One – Transmission
- 24 Stay Safe
- 28 Models/Specifications
- 32 Paint+Fabric
- 34 Accessories



¹2007 EPA fuel economy estimates 29 city/36 highway for Sentra equipped with Xtronic CVT transmission. Actual mileage may vary with driving conditions – use for comparison only.



Sentra 2.0 SL shown in Magnetic Gray with accessory equipment.



Interior

Sentra 2.0 SL shown in Saddle Leather with optional equipment.



Stash and go big time. Friendly and accommodating describes it best. Purses stay put, your essentials come along. Even your laptop sleeps easy in the largest glove compartment among competitors.



Your big life has found the perfect home. An organized place that loves to road-trip. Versatile and generous, it's got you and friends in mind. Along with your laptop, giant drinks, even a special spot just for those cool shades. Sentra means everything in its place and a place for everything.



Save your shades. Give your favorites a spot of their own. This driver-focused compartment with flocked lining is also perfect protection for your shiny new phone or the latest PDA.



Sliding cup holder for giant drinks or gamer favorites. The adjustable divider moves to make room for two cups or to grab onto a monster 32 oz. Then slide it out of the way and make room for DVDs or video games.



Hear it, hide it, take it. Store 8 CDs in the available integrated overhead CD holder. Built right into the headliner, magnets hold it into place behind the visor. Always within reach, and removable, so it's easy to reload.



A pocket for everyone. These available seatback pockets are made for sharing. Their mesh design means nothing – cameras, keys or phones – gets left behind by backseat drivers or friends.





Pass through this. Mountain bikes, luggage, and so much more. The extra-wide opening with high interior arch maximizes your flexibility and your fun. The rear seats conveniently split 60/40, then fold flat, with no need to remove the head restraints.



Ice, ice. Who brought the ice? You did, because Sentra's hidden storage panel lays flat and can contain up to 72 ounces of the melted stuff. Ideal for anything wet or dripping.

Of course you can bring it along. Sentra gets it. Real life can be complicated. But taking it with you doesn't have to be. Meet everyday conveniences for almost every occasion. Bike trek, day at the beach, week with your family. More places to go. With up to 13 cubic feet in the trunk alone, problem solved.



x7

Keep some things all to yourself. The available Divide-N-Hide™ trunk system creates a hidden compartment for valuables or keeps bags, balls, and coolers from rolling around. You can even access the space from the cabin – cold drinks, anyone?



x4

What will you do with all the space? Keeping convenience a top priority, the available Divide-N-Hide™ trunk system has bag hooks built right in – so that no more goodies go MIA.





Where art and engineering come together. As in a “floating” shifter that looks sleek but is also easier to reach and quicker to shift. Only a glance away, Sentra’s available drive computer lets you see the pertinent info. You’ll find the ever-important distance to empty, fuel economy, outside temperature, and trip time. Open door? It even tells you which one. An interior surrounding you with both beauty and knowledge. How great is that?

Intelligent Key. You just had your key. Or maybe it's in your pocket. But your days of hide-and-seek are over. Nissan's available Intelligent Key senses your approach and lets you unlock the doors just by pushing a button on the handle. So your key can stay in your bag or pocket where it is. You can open the doors or the trunk, let your friends in, and start the engine, all without even taking your key out. Or even having to find it.



Never dig for it again.

Bluetooth® Hands-free Phone System. Of course, your phone only rings while you're driving. With available Bluetooth, you can answer it, even if it's still in that bag. Use your compatible phone just by pressing a button on the steering wheel. It's wireless, voice-activated, and plays through the speaker system, even muting your music for you. You can program in as many as 40 numbers and talk whenever you feel like it. Even to yourself. There's a "memo pad" feature that lets you record messages for playback later. So speak up!

*Availability of specific features is dependent upon the phone's Bluetooth® support. Please refer to your phone owner's manual for details. Cell phone not included. The Bluetooth word mark and logos are owned by Bluetooth SIG, Inc., and any use of such marks by Nissan is under license.

No matter your mood, there's a song to match. How you infuse it is all up to you. Connect your MP3 player through the auxiliary audio input. Dig state-of-the-art satellite radio. Or load 6 MP3/WMA discs for over 1,000 of your favorite songs. All of it blasting through a high-performance Rockford Fosgate-powered audio system. Musical justice, now yours.



Deep Excitable Reflective Mellow

Is it loud in here, or is it just you? If it's music you're in the mood for, Sentra comes with a CD player and an auxiliary audio input for your MP3 player. Then there's the available Rockford Fosgate-powered audio system – pre-wired for satellite radio¹ and ready to amp up your playlist. Eight speakers in total, including two 6" x 9" mid-woofers up front and two 8" subwoofers in rear. Plus an in-dash 6-CD changer with MP3/WMA CD playback capability. This must be what good karma sounds like.



¹No satellite radio reception is available unless optional satellite receiver and antenna were purchased and installed and an XM® or Sirius™ satellite radio service subscription is active. Satellite radio option can only be installed in vehicles that were factory pre-wired for satellite radio. Satellite radio not available in Hawaii and Alaska.



Fun to Drive



Your on-ramp to fun has arrived. Packed with some of our best thinking, this Sentra keeps up. A powerful new engine is as smart as you are, with an advanced suspension to keep you ahead of the curves. And two transmissions to check out, spicy or smooth. You know you wanna drive, and this one will be a blast. It is a Nissan, after all.



Sentra's all-new 2.0-liter engine revs right past shy. Its 140 hp is more accessible than ever, and its low-end torque (147 lb-ft) will soon be your best friend. With a lightweight, all-aluminum core, weight is down and muscle is up. While performance-enhancing

technologies like microfinished camshafts increase your smooth factor, and continuously variable valve timing makes for more power and efficiency. All of this while averaging a competitive mpg of around 36! No gas hogging here. Just fun, and all the road you can handle.

Rev Happy



A GEAR FOR EVERY SITUATION

A SITUATION FOR EVERY GEAR

RIGHT-HAND NIRVANA

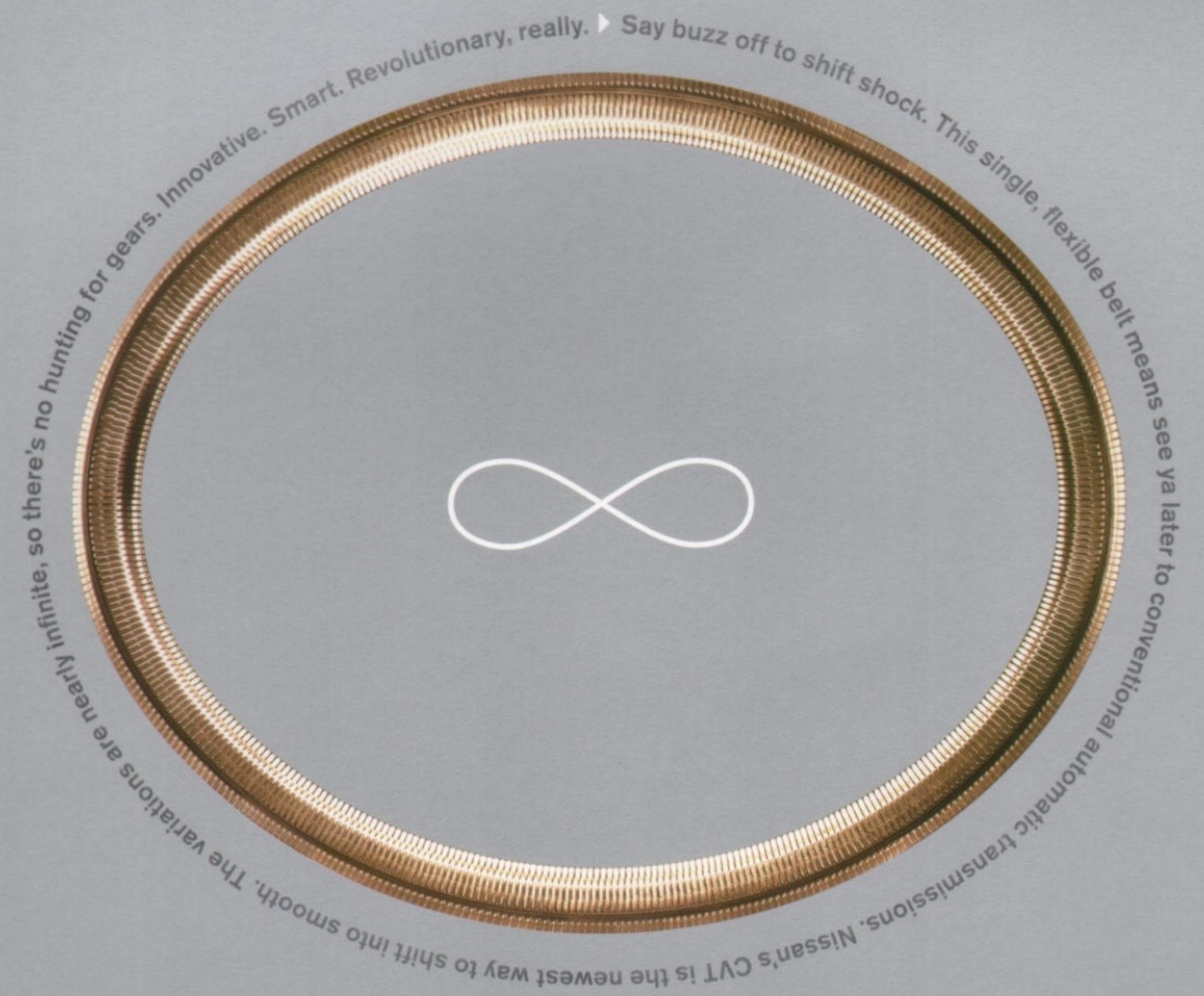
SIX IS BETTER THAN FIVE

FIRST ONE TO VEGAS WINS

ZIP PAST THAT 18-WHEELER

For you, nothing less than 6 will do. Control is king and this 6-speed manual keeps you close to the action. Triple-cone synchronizers in first and second make for brisk and precise shifting. While a smaller rpm drop with each upshift means a more seamless response to your demands.

Revolutionary



so there's no hunting for gears. Innovative. Smart. Revolutionary, really. ▶ Say buzz off to shift shock. This single, flexible belt means see ya later to conventional automatic transmissions. Nissan's CVT is the newest way to shift into smooth. The variations are nearly infinite.

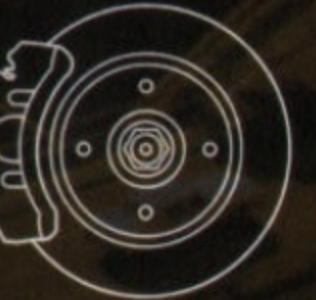
If you're into what's next, Xtronic CVT takes you there, to that "sweet spot" faster. Unlike ordinary automatics, Continuously Variable Transmission is a virtually "gearless" transmission. It keeps the engine performing at optimal rpm, for efficient cruising with maximum fuel economy. You're in for one quick rush of linear acceleration and a super-smooth ride. Lucky you.

On the bumpy, curvy, pothole-filled road of life, take confidence along. It's always better to worry less and enjoy more. That's what our engineers strive for – an assurance that's more than facts and figures on a page, but something you will appreciate every time you leave your driveway.

You've never ever met a curve that you didn't like, or at least want to get to know a lot better.



Rebound spring/vehicle speed-sensitive steering. All curves ahead, you can handle it. Rebound springs help control motion during cornering and curves for a smoother, flatter, more secure ride. Sentra also has vehicle speed-sensitive steering that gives you a more solid feel at higher speeds and more power assist at lower speeds, such as parking.



No one else drives as well as you do, so you never know what can happen next.

Braking. Sentra's available Anti-lock Braking System (ABS) helps prevent brakes from locking up during panic stops. It's offered with Electronic Brake force Distribution (EBD), designed to compensate for any extra weight by increasing rear brake force.

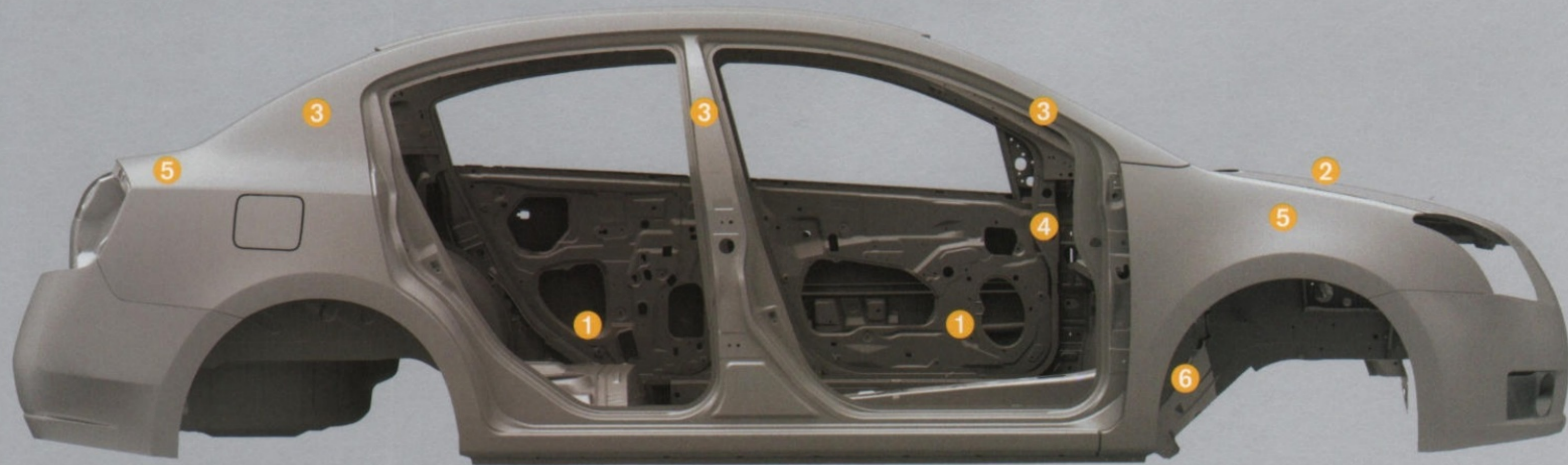


Ouch! It's good to be greedy when it's your comfort on the line. From now on, bumps beware.

Ripple control. Conventional shock absorbers are designed to absorb shocks. But when they hit a bump, they tend to vibrate, sending little "ripples" through the suspension. Using suspension technologies developed for premium luxury sedans and sports cars, Nissan "ripple-control" shocks help damp out unwanted vibrations for a smoother, more controlled ride.

Safety is the ultimate must-have and Sentra takes that seriously. The Nissan Safety Shield is our comprehensive approach to safety. It includes rigorous crash testing, over 50 standard safety features on every vehicle, available advanced technologies, and child-safety programs like Snug Kids. In Sentra, safety comes first, thanks to 6 standard air bags, including seat-mounted side-impact supplemental air bags and roof-mounted curtain side-impact air bags. Confidence-inspiring, it's our safety philosophy in action.

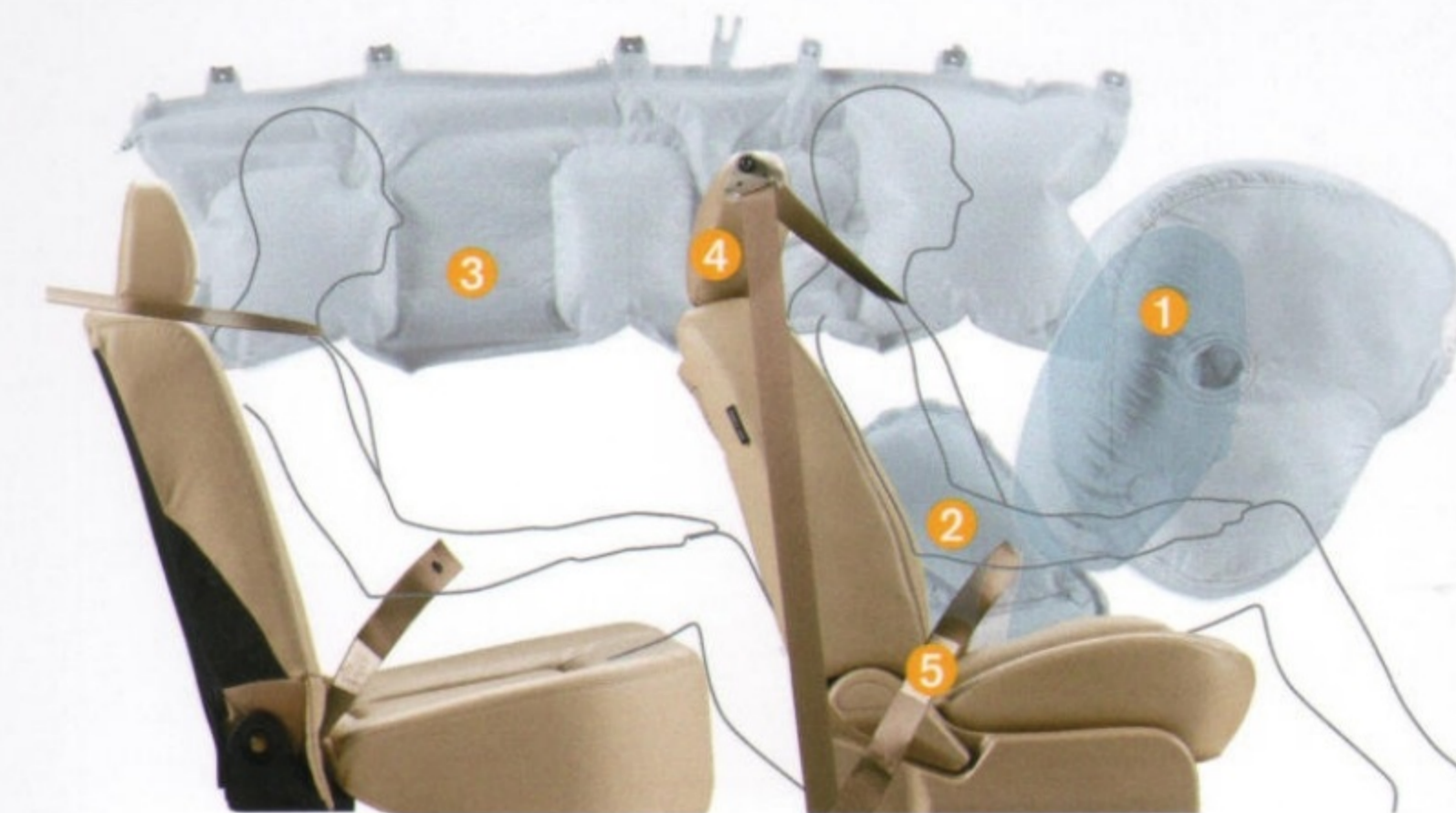
- 1 Pipe-style steel guard beams are welded into every door to help protect in the event of side impacts.
- 2 Hood buckling creases allow the hood to buckle at predetermined points, to help prevent it from intruding into the passenger compartment in certain frontal impacts.



- 3 Reinforced pillars utilize high-strength steel for improved strength.
- 4 Energy-absorbing steering column helps reduce the likelihood of injury in certain frontal impacts.
- 5 Front and rear crumple zones help absorb impact energy.
- 6 Engine pull-down system helps reduce engine intrusion into occupant area.

Stay Safe

- 1 **Nissan's Advanced Air Bag System (AABS).** This comprehensive system includes dual-stage supplemental front air bags with seat belt sensors and an occupant-classification sensor. The inflation rate of these dual-stage air bags adjusts depending on crash severity and seat belt usage. If the front seat is empty, a sensor will deactivate the air bag!
- 2 **Standard side-impact air bags.** These air bags are actually built into the driver seat and front-passenger's seat, so they move with you as you adjust your seating position!
- 3 **Standard roof-mounted curtain side-impact air bags.** These help protect front and rear outboard passengers in side-impact collisions!
- 4 **Front-seat Active Head Restraints.** By moving up and forward in the event of a rear-end collision, Sentra's Active Head Restraints help reduce whiplash-type injuries to front-seat occupants.
- 5 **Seat belts.** Still your primary restraint system. Sentra's front seat belts feature pretensioners that automatically help tighten the belts when the air bags deploy, as well as load limiters that help give a little when too much force is put on the belt.



Another Nissan first. NHTSA-certified 'Child Passenger Safety' technicians have dedicated over 1,000 man-hours to checking over 4,000 child seat installations in Nissans. The result: An industry first, The Snug Kids Child Safety Seat Fit Guide. This guide lists child seats that fit the rear seats of Nissan vehicles, as well as offers invaluable tips on correct installation. Look for the latest Fit Guide at NissanUSA.com/SnugKids



*Air bags are only a supplemental restraint system; always wear your seat belt. Even with the occupant-classification sensor, rear-facing child restraints should not be placed in the front-passenger's seat. Also, all children 12 and under should ride in the rear seat properly secured in child restraints, booster seats, or seat belts according to their size. Air bags will only inflate in certain accidents; see your owner's manual for more details. Inflated air bags shown for illustration purposes only. Actual air bags deflate after deployment.

SHIFT_technology



Specifications

| Engine | 2.0 | 2.0 S | 2.0 SL |
|---|-----|-------|--------|
| MR20DE – 2.0-liter DOHC 16-valve 4-cyl. engine | ■ | ■ | ■ |
| — Horsepower – 140 hp @ 5,100 rpm | | | |
| — Torque – 147 lb-ft @ 4,800 rpm | | | |
| Emissions – ULEV | ■ | ■ | ■ |
| Continuously Variable Valve Timing Control System (CVTCS) | ■ | ■ | ■ |
| Nissan Direct Ignition System with iridium-tipped spark plugs | ■ | ■ | ■ |
| Electronic drive-by-wire throttle | ■ | ■ | ■ |

| Drivetrain | 2.0 | 2.0 S | 2.0 SL |
|--|-----|-------|--------|
| Front engine/front-wheel drive | ■ | ■ | ■ |
| 6-speed manual transmission | ■ | ■ | ■ |
| Xtronic CVT (Continuously Variable Transmission) | □ | □ | ■ |

| Wheels/Tires | 2.0 | 2.0 S | 2.0 SL |
|---|-----|-------|--------|
| 15" x 6.5" Steel wheels with wheel covers | ■ | ■ | ■ |
| 16" x 6.5" Steel wheels with wheel covers | | ■ | |
| 16" x 6.5" 7-spoke aluminum-alloy wheels | | W | ■ |
| P205/60HR15 Tires | ■ | ■ | ■ |
| P205/55HR16 Tires | | ■ | ■ |

| Brakes | 2.0 | 2.0 S | 2.0 SL |
|---|-----|-------|--------|
| 11.02" Vented front disc/rear drum brakes | ■ | ■ | ■ |
| 4-wheel Anti-lock Braking System (ABS) | AB | W | ■ |
| Electronic Brake force Distribution | AB | W | ■ |

| Suspension/Steering | 2.0 | 2.0 S | 2.0 SL |
|---|-----|-------|--------|
| Front: Independent strut suspension | ■ | ■ | ■ |
| Rear: Torsion beam axle with integrated rear stabilizer bar | ■ | ■ | ■ |
| Ripple-control shock absorbers | ■ | ■ | ■ |
| Front stabilizer bar | ■ | ■ | ■ |
| Electric power-assisted steering | ■ | ■ | ■ |

■ Standard
□ Optional
AC Accessory

C Part of 2.0 S Convenience Package
A Part of Audio Package
SR Part of 2.0 SL Sunroof Package

| Exterior | 2.0 | 2.0 S | 2.0 SL |
|---|-----|-------|--------|
| Fog lights | AC | AC | AC |
| Rear spoiler | AC | AC | AC |
| Splash guards | AC | AC | AC |
| Dual power body-color outside mirrors | | ■ | ■ |
| Power sliding glass sunroof with tilt feature | | | SR |

| Audio | 2.0 | 2.0 S | 2.0 SL |
|--|-----|-------|--------|
| AM/FM/CD audio system | ■ | | |
| Premium AM/FM/CD audio system | | ■ | ■ |
| Rockford Fosgate-powered AM/FM/in-dash 6-CD changer audio system | | A | A |
| MP3/WMA CD playback capability | | A | A |
| Auxiliary audio input | ■ | ■ | ■ |
| Illuminated steering wheel-mounted audio controls | | ■ | ■ |
| Radio Data System (RDS) | | ■ | ■ |
| Speed-sensitive audio volume | | ■ | ■ |
| Four speakers | ■ | | |
| Six speakers | | ■ | ■ |
| Eight speakers, including two 8" subwoofers | | A | A |
| Satellite radio pre-wiring ¹ | | C A | |
| Satellite radio receiver (XM® or Sirius™) ¹ | | SA | SA |

| Interior | 2.0 | 2.0 S | 2.0 SL |
|---|-----|-------|--------|
| Intelligent Key keyless ignition and entry system | | C | ■ |
| Bluetooth® Hands-free Phone System | | C | ■ |
| Integrated overhead CD holder | | C | ■ |
| Divide-N-Hide™ trunk system | | C | ■ |
| Rear seating with trunk-accessible pass-through | ■ | ■ | ■ |
| Air conditioning (with in-cabin microfilter) | ■ | ■ | ■ |
| Trip computer | | ■ | ■ |
| Outside temperature display | | ■ | ■ |
| Tachometer | ■ | ■ | ■ |
| Power windows with driver's one-touch auto-down feature | ■ | ■ | ■ |
| Power door locks | ■ | ■ | ■ |
| Remote keyless entry | | ■ | ■ |
| Remote trunk release | | ■ | ■ |
| Cruise control with illuminated steering wheel-mounted switches | | C | ■ |
| Oversize locking glove compartment with light | ■ | ■ | ■ |
| Front seatback pockets | | ■ | ■ |

AB Part of 2.0 ABS Option
W Part of 2.0 S Alloy Wheel/ABS Package
SA Part of Satellite Radio Option

| Interior (continued) | 2.0 | 2.0 S | 2.0 SL |
|--|-----|-------|--------|
| Overhead map lights | | ■ | ■ |
| Interior accent lights | | ■ | ■ |
| Center console with adjustable cup holders | ■ | ■ | ■ |
| Center console storage light | | ■ | ■ |
| Driver-side sunglasses compartment | ■ | ■ | ■ |
| Upper dash storage | ■ | ■ | ■ |
| Front door pockets | | ■ | ■ |
| Battery saver | ■ | ■ | ■ |
| Tilt steering column | ■ | ■ | ■ |
| Rear defroster with timer | ■ | ■ | ■ |
| Variable intermittent windshield wipers | ■ | ■ | ■ |
| Driver visor vanity mirror | ■ | ■ | ■ |
| Passenger visor vanity mirror | ■ | ■ | ■ |
| Dual illuminated visor vanity mirrors | | | SR |
| Digital clock (in radio) | ■ | ■ | ■ |
| Auxiliary 12-volt DC power outlet | ■ | ■ | ■ |
| Cargo net | | C | ■ |

| Seating/Appointments | 2.0 | 2.0 S | 2.0 SL |
|--|-----|-------|--------|
| 4-way manual adjustable driver's seat | ■ | ■ | ■ |
| 6-way manual adjustable driver's seat (includes height adjustment) | | ■ | ■ |
| 4-way manual front-passenger's seat | ■ | ■ | ■ |
| Suede cloth seats | ■ | ■ | ■ |
| Leather-appointed seats | | ■ | ■ |
| Rear seat center armrest with cup holders | ■ | ■ | ■ |
| 60/40 split fold-flat rear seats | | ■ | ■ |
| Leather-wrapped steering wheel | | C | ■ |
| Height-adjustable 3-point front seat belts | ■ | ■ | ■ |
| Trunk lid trim | | ■ | ■ |

| Safety/Security | 2.0 | 2.0 S | 2.0 SL |
|--|-----|-------|--------|
| Nissan Advanced Air Bag System with dual-stage supplemental front air bags with seat belt and occupant-classification sensor | ■ | ■ | ■ |
| Driver and front-passenger seat-mounted side-impact supplemental air bags | ■ | ■ | ■ |
| Roof-mounted curtain side-impact supplemental air bags for front and rear-seat outboard occupant head protection | ■ | ■ | ■ |
| 3-point ALR/ELR passenger seat belt system (ELR for driver) | ■ | ■ | ■ |
| Front seat belts with pretensioners and load limiters | ■ | ■ | ■ |
| Front-seat Active Head Restraints | ■ | ■ | ■ |
| LATCH System (Lower Anchors and Tethers for Children) | ■ | ■ | ■ |
| Child-safety rear door locks | ■ | ■ | ■ |
| Zone Body construction with front and rear crumple zones | ■ | ■ | ■ |
| Energy-absorbing steering column | ■ | ■ | ■ |
| Hood buckling creases | ■ | ■ | ■ |
| Pipe-style steel side-door guard beams | ■ | ■ | ■ |
| Tire Pressure Monitoring System (TPMS) | ■ | ■ | ■ |
| Nissan Vehicle Immobilizer System | ■ | ■ | ■ |
| Vehicle security system | ■ | ■ | ■ |

Packages

C 2.0 S Convenience Package

Intelligent Key keyless ignition and entry system (requires Xtronic CVT)
Bluetooth® Hands-free Phone System
Cruise control with illuminated steering wheel-mounted switches
Leather-wrapped steering wheel
Integrated overhead CD holder
Divide-N-Hide™ trunk system
Cargo net
Satellite radio pre-wiring¹

A Audio Package (2.0 S, 2.0 SL)

Rockford Fosgate-powered AM/FM/In-dash 6-CD audio system
MP3/WMA CD playback capability
Eight speakers, including two 8" subwoofers
Satellite radio pre-wiring¹ (2.0 S only)
This package requires 2.0 S Wheel/ABS Package on 2.0 S and 2.0 SL Sunroof Package on 2.0 SL.

SR 2.0 SL Sunroof Package

Power sliding glass sunroof with tilt feature
Dual illuminated visor vanity mirrors

AB 2.0 ABS Option

Anti-lock Braking System (ABS)
Electronic Brake force Distribution (EBD)

W 2.0 S Alloy Wheel/ABS Package

16" 7-spoke aluminum-alloy wheels
Anti-lock Braking System (ABS)
Electronic Brake force Distribution (EBD)
This package requires 2.0 S Convenience Package.

SA Satellite Radio Option

Satellite radio receiver (XM® or Sirius™)
Includes activation and 3 months of service
This package requires Audio Package.

Dimensions/Capacities

Interior Dimensions – Inches

| Front/rear | |
|------------------------|-----------|
| Head room ² | 40.6/37.3 |
| Leg room | 42.4/34.5 |
| Hip room | 54.1/53.0 |
| Shoulder room | 56.9/55.1 |

Capacities

| | |
|-------------------------------------|-------------------------|
| Interior passenger volume (cu. ft.) | 97.4, 97.7 ³ |
| Cargo volume (cu. ft.) | 13.1 |
| Fuel tank (gals.) | 14.5 |

Curb Weights – Lbs.

| | 2.0 | 2.0 S | 2.0 SL |
|---------------------|-------|-------|--------|
| Manual transmission | 2,853 | 2,907 | N/A |
| Xtronic CVT | 2,897 | 2,951 | 2,991 |

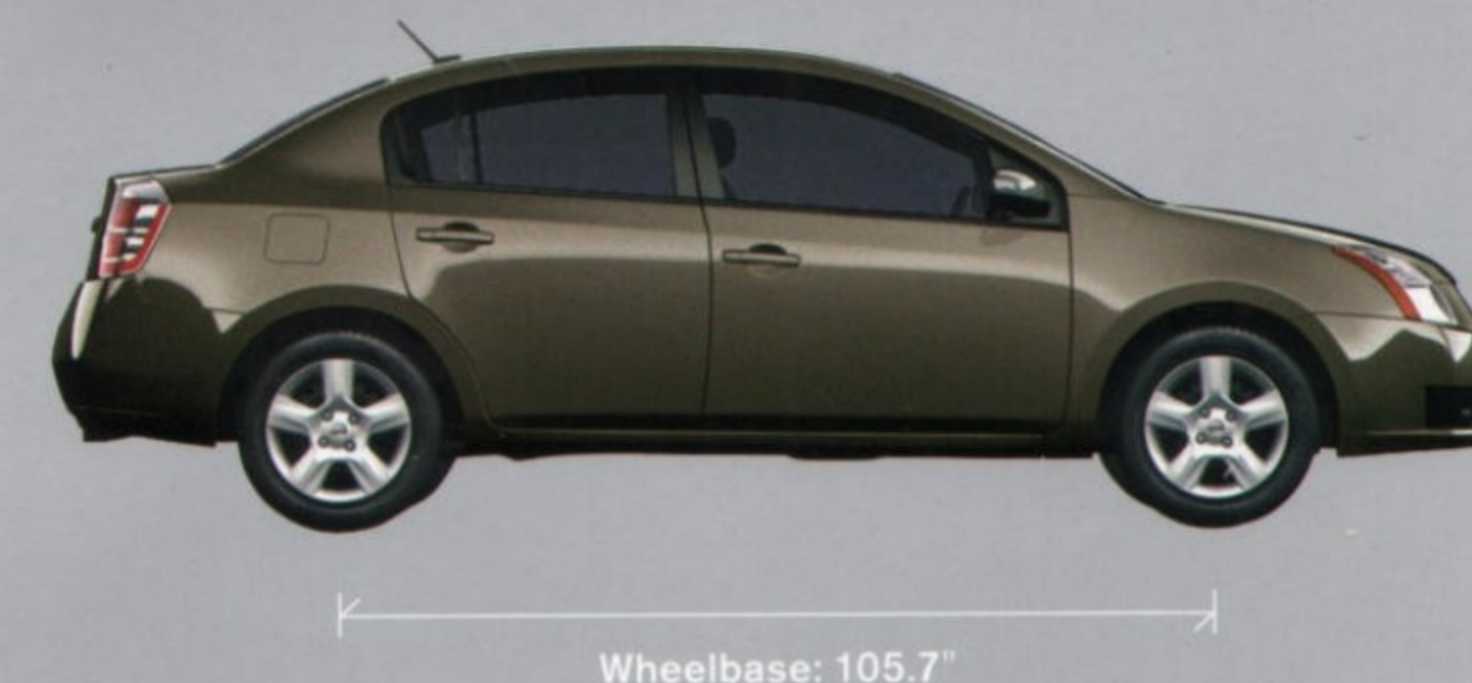
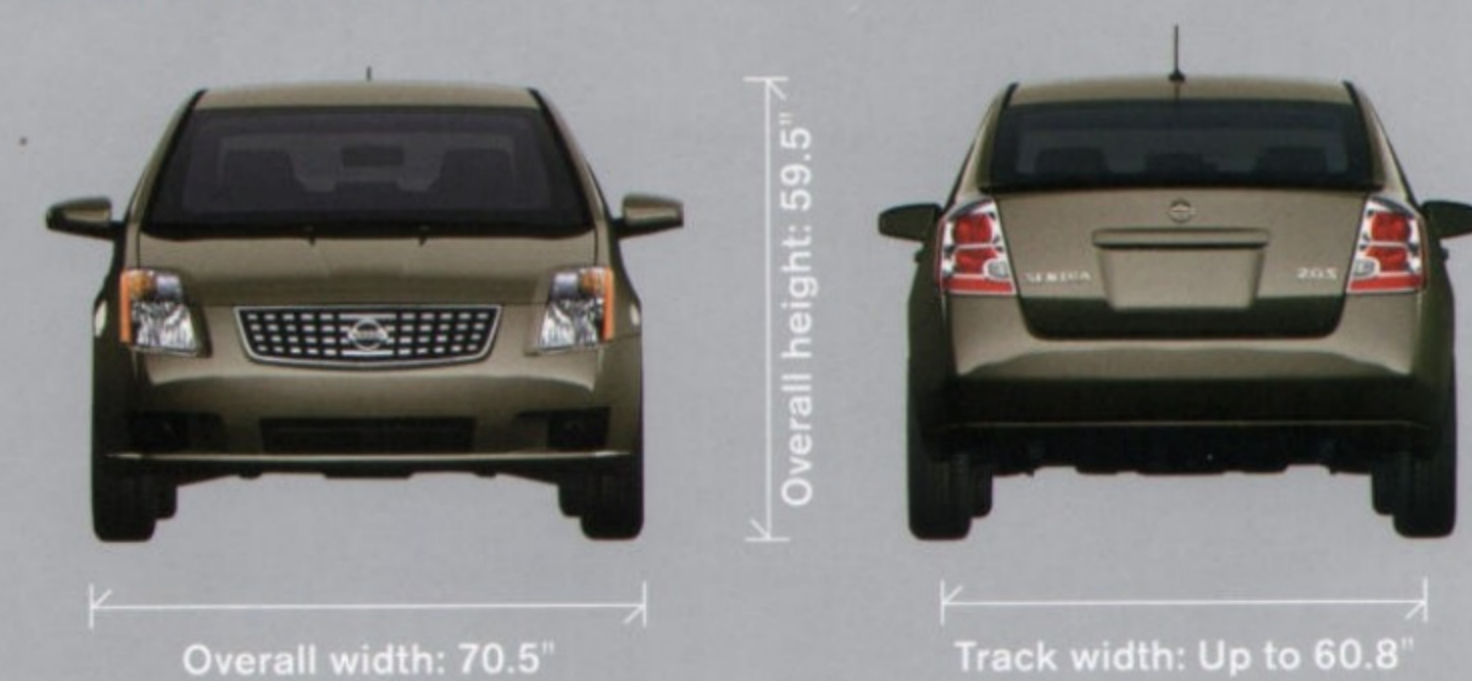
2007 EPA Fuel Economy Estimates – City/Hwy

| | 2.0 | 2.0 S | 2.0 SL |
|---------------------|-------|-------|--------|
| Manual transmission | 28/34 | 28/34 | N/A |
| Xtronic CVT | 29/36 | 29/36 | 29/36 |

¹ Actual mileage may vary with driving conditions – use for comparison only.

² N/A – Not available.

Exterior Dimensions



Trim Levels



Sentra 2.0

- 140-hp 2.0-liter 4-cylinder engine with a 6-speed manual transmission
- Electric power-assisted steering
- Ripple-control shock absorbers
- 60/40 split fold-flat rear seats
- Power windows and door locks
- Air conditioning (with in-cabin microfilter)
- AM/FM/CD audio system with auxiliary audio input
- Oversize locking glove compartment with light
- Rear seat center armrest with cup holders
- Driver and front-passenger seat-mounted side-impact supplemental air bags
- Roof-mounted curtain side-impact supplemental air bags
- Tire Pressure Monitoring System (TPMS)

Sentra 2.0 S

Includes 2.0 equipment, plus:

- 16" Wheels
- Power outside mirrors
- AM/FM/CD audio system with six speakers
- Illuminated steering wheel-mounted audio controls
- Remote keyless entry with trunk release
- Trip computer and outside temperature display
- Height-adjustable driver seat

Additional key options:

- Xtronic CVT transmission
- Intelligent Key keyless ignition and entry system
- Bluetooth® Hands-free Phone System
- Rockford Fosgate-powered AM/FM/in-dash 6-CD audio system



Sentra 2.0 SL

Includes 2.0 S equipment, plus:

- Xtronic CVT transmission
- 4-wheel Anti-lock Braking System (ABS)
- 16" Aluminum-alloy wheels
- Intelligent Key keyless ignition and entry system
- Bluetooth® Hands-free Phone System
- Cruise control
- Integrated overhead CD holder
- Divide-N-Hide™ trunk system
- Leather-appointed seats and leather-wrapped steering wheel
- Vehicle security system

Additional key option:

- Rockford Fosgate-powered AM/FM/in-dash 6-CD audio system



All illustrations, photographs and specifications in this publication are based on the latest product information available at the time of printing. Some vehicles shown with optional equipment. See the actual vehicle for complete accuracy. Availability and delivery times for particular models or equipment may vary. Nissan North America, Inc. reserves the right to make changes at any time, without prior notice, in prices, colors, materials, equipment, specifications, and models and to discontinue models or equipment. Specifications, options and accessories may differ in Hawaii, U.S. territories and other countries. For additional information on availability, options or accessories, see your Nissan dealer.



Blue Onyx B23

| | 2.0 | 2.0 S | 2.0 SL |
|----------------|-----|-------|--------|
| Beige Cloth | ■ | ■ | |
| Beige Leather | | | ■ |
| Charcoal Cloth | ■ | ■ | |



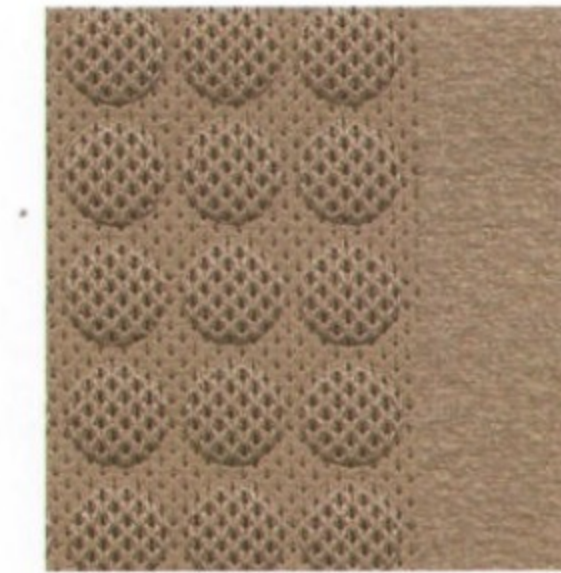
Brilliant Silver K23

| | 2.0 | 2.0 S | 2.0 SL |
|------------------|-----|-------|--------|
| Charcoal Cloth | | ■ | |
| Charcoal Leather | | | ■ |



Magnetic Gray K36

| | 2.0 | 2.0 S | 2.0 SL |
|------------------|-----|-------|--------|
| Beige Cloth | ■ | ■ | |
| Beige Leather | | | ■ |
| Charcoal Cloth | ■ | ■ | |
| Charcoal Leather | | | ■ |
| Saddle Leather | | | ■ |



Beige Cloth



Charcoal Cloth



Beige Leather



Charcoal Leather



Sonoma Sunset A15

| | 2.0 | 2.0 S | 2.0 SL |
|------------------|-----|-------|--------|
| Charcoal Cloth | ■ | ■ | |
| Charcoal Leather | | | ■ |



Polished Granite K37

| | 2.0 | 2.0 S | 2.0 SL |
|----------------|-----|-------|--------|
| Beige Cloth | | ■ | |
| Saddle Leather | | | ■ |



Super Black KH3

| | 2.0 | 2.0 S | 2.0 SL |
|------------------|-----|-------|--------|
| Beige Cloth | ■ | ■ | |
| Beige Leather | | | ■ |
| Charcoal Cloth | ■ | ■ | |
| Charcoal Leather | | | ■ |
| Saddle Leather | | | ■ |



Saddle Leather

Find the Sentra that reflects your style. The choices are many. And this brochure has them all. Or, if you want an interactive experience, go to NissanUSA.com and find great ways to configure your Sentra.

Please see the actual colors at your local Nissan dealer.

■ Standard



Metallic Jade J40

| | 2.0 | 2.0 S | 2.0 SL |
|----------------|-----|-------|--------|
| Charcoal Cloth | | ■ | |



Sandstone K32

| | 2.0 | 2.0 S | 2.0 SL |
|----------------|-----|-------|--------|
| Charcoal Cloth | | ■ | |



Fresh Powder QM1

| | 2.0 | 2.0 S | 2.0 SL |
|----------------|-----|-------|--------|
| Beige Cloth | ■ | ■ | |
| Charcoal Cloth | ■ | ■ | |

Genuine Nissan Accessories

See your Nissan dealer for a Sentra accessories brochure, or download one at NissanUSA.com



Rear Spoiler

Choose a Rear Spoiler for a sportier attitude and to enhance aerodynamic rear down-force. The spoiler is pre-painted to match your vehicle's factory color. (Late availability.)



Nissan Gear

Shirts by Nike®. Bags by High Sierra®. And a whole lot more. Plus a line of merchandise that includes everything from T-shirts to key chains. All of it high-quality, well-designed, and modern in attitude. Like Sentra.

Why choose Genuine Nissan Accessories? First, they're backed by Nissan's 3-year/36,000-mile Parts and Accessories limited warranty,¹ when installed at time of vehicle purchase. And you can finance them when you finance your vehicle, adding just a nominal fee to your monthly payment. Only Genuine Nissan Accessories are custom-designed and custom-fit for your Sentra. Plus, they're durability-tested, and meet Nissan standards as well as any applicable Federal Motor Vehicle Safety Standards. Look for a wide selection of accessories at over 1,000 Nissan dealers nationwide.

▶ Splash Guards

A great way to help protect your Sentra's lower body panels. The Splash Guards are painted to match your vehicle's factory color, contoured to match the wheel openings, and feature easy, no-drill installation.



▲ License Plate Frames

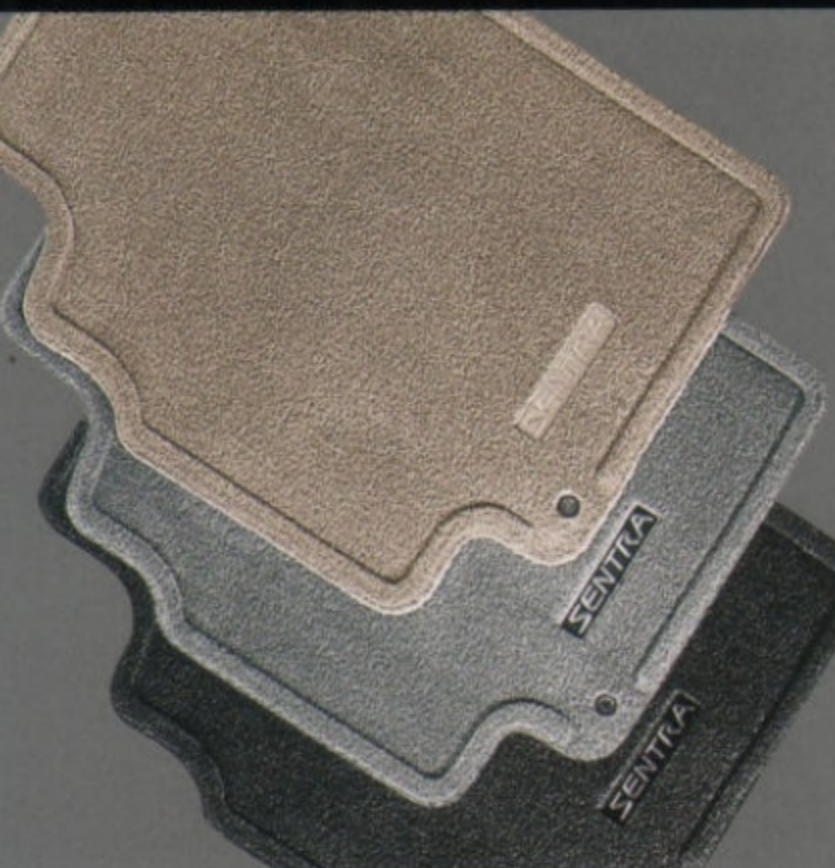
Stainless steel License Plate Frames are available with or without a Nissan logo, and come in polished, satin, and black pearl finishes.

◀ Carpeted Floor Mats

Help protect the carpeting with high-density mats, featuring a grommet/hook system to help keep the driver's mat in place.

▼ All-season Floor Mats

These durable mats feature deep-ribbed channels to help trap dirt, mud, snow, and water.



▶ Carpeted Trunk Mat

This high-density, cut-pile nylon mat helps protect your trunk's carpeting and matches the trunk interior.



For the complete line of Nissan merchandise and lifestyle gear, log on to:

NissanUSA.com/gear

®Nike is a registered trademark of Nike, Inc.
®High Sierra is a registered trademark of High Sierra Sport Company.



Custom Sunglasses

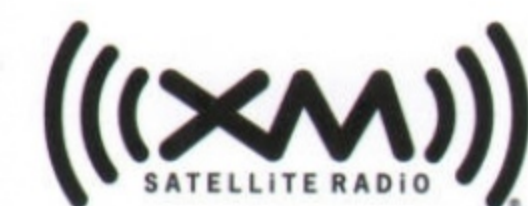
▲ Nose Mask

Helps protect against rock chips, bugs, and road debris. A 2-piece design lets you open the hood without removing the mask.



▶ Satellite Radio²

Add XM® or Sirius™ satellite radio and enjoy programming in digital sound from coast to coast. Either fully integrated system fits seamlessly into your existing radio.



Also Available

Body Side Moldings
Emergency Road Kit
First-aid Kit
In-cabin Microfilter
Vehicle Cover
Wheel Locks

¹See your Nissan dealer and read the actual limited warranty for complete details. ²Includes activation and 3 months of service. No satellite radio reception is available unless optional satellite receiver and antenna were purchased and installed and an XM® or Sirius™ satellite radio service subscription is active. Satellite radio option can only be installed in vehicles that were factory pre-wired for satellite radio. Satellite radio not available in Hawaii and Alaska. The XM name and related logos are registered trademarks of XM Satellite Radio Inc. SIRIUS and related marks are trademarks of Sirius Satellite Radio Inc. All rights reserved.



What is **SHIFT_**?



Changing for the better. We start with the end-user. Identifying needs. Coming up with one-of-a-kind solutions. Take Titan's revolutionary Utili-track Bed. Inspired by truck owners, it changed the full-size bed forever. Seeking higher standards. Superior engineering has landed our VQ engine on *Ward's* 10 Best Engines list for the past twelve years.¹ And every year, we push it more. Thinking beyond the future. Motivated by motorcycle styling and gamer passion, the URGE concept vehicle combines the performance of a rear-wheel drive three-seater sports car with the power of an integrated Xbox 360™ video game system. For more info, go to NissanUSA.com

¹Ward's Automotive Group, January 2006. ™Xbox 360 is a trademark of Microsoft Corporation in the United States and/or other countries.

More ways we shift the experience.

Warranties Every Nissan is backed by a 36-month/36,000-mile vehicle warranty coverage and a 5-year/60,000-mile powertrain coverage. (For complete information, see your Nissan dealer and read the actual limited warranty.)

Signature Financing When you've decided which Nissan is right for you, Nissan Motor Acceptance Corporation (NMAC) offers a variety of financing options, attractive rates, and flexible terms to make your decision easier and helps make your purchase more accessible. See your Nissan dealer or visit NissanUSA.com/Financing for more details. Qualifications and restrictions may apply.

Security+Plus and Maintenance+Plus For ultimate peace of mind, consider the Nissan Security+Plus® Plan, our extended service contract. It's our commitment to be there for you, and to help you leave your worries behind. Different plans, available for both purchase and lease vehicles, let you tailor the coverage to your driving habits. Maintenance+Plus® coverage, on the other hand, ensures your vehicle will receive up to 17 different services and over 33 different inspection items at each visit, using the most up-to-date diagnostic equipment available. (For complete information, see your Nissan dealer and read the actual plan.)

Genuine Nissan Parts and Service Every part we make is manufactured to the same exacting standards as the original. And they're the only parts to carry Nissan's factory-backed limited warranty. At Nissan dealers, you'll find factory-trained, certified service technicians who are just as precision-oriented.



At NissanUSA.com, you'll find virtual product demonstrations, a way to "build your own Nissan," a dealer locator, and more information about key Nissan support services. Or if you'd prefer, call 1-800-NISSAN-3 for answers to specific questions about Sentra or any other Nissan vehicle. The Nissan names, logos, product names, feature names, and slogans are trademarks owned by or licensed to Nissan Motor Co. Ltd. and/or its North American subsidiaries. **Always wear your seat belt, and please don't drink and drive.** © 2006 Nissan North America, Inc. '07 Sentra. 070012-09/06-300M-CGI.



SHIFT_individuality

We see **SHIFT_** as an invitation. To challenge whatever feels too familiar. To open your mind to the unfamiliar. To ask the questions no one else is asking. And to find answers no one else can. At Nissan, we do this every day. And it shapes everything we do. The result is a lineup of vehicles that represents a pure, uncompromising shift from the ordinary. **NissanUSA.com**