



2011 QUEST



INNOVATION FOR FAMILY.

Today will be different. You've got Quest[®] on your side. When life comes calling, rely on the all-new modern 7-seater with style. Daily routine or family road trip, celebrate it all – with accommodations that are nothing but first-class. Say yes to a roof made of sky, sliding doors that open with one touch, and seats so incredibly easy to configure, you'll look for excuses to pack up and go. Quest. Innovation for family. Innovation for all.





A THOUSAND THINGS TO DO.
SO MUCH TO APPRECIATE.

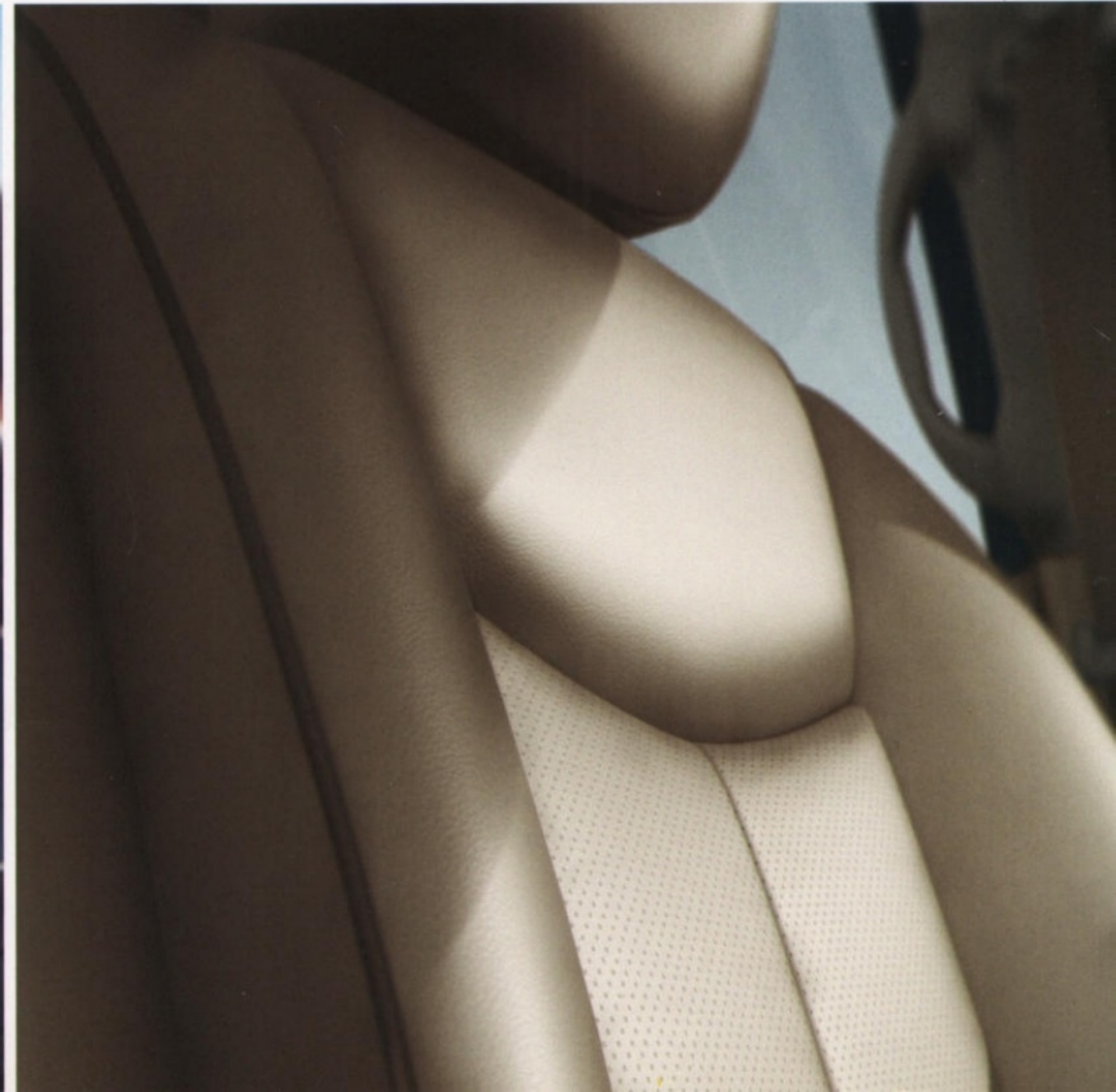
Nissan Quest LE shown in Platinum Graphite.



Nissan Quest LE shown in Beige Leather.



**SELFLESS. SELFISH.
BOTH SIDES ARE HAPPY.**





NEW WORLD.
YOUR QUEST.



Nissan Quest LE shown in Beige Leather.

WE LOOK AT THINGS DIFFERENTLY.

NOW YOU CAN TOO.

On the next few pages, you'll see what it's like to have a Quest in your life. Not just a minivan, but possibly the most helpful member of your family. Imagine putting air in your tires and hearing a friendly beep of the horn when they're full. Freezing outside? Quick Comfort heated front seats get you warm fast. Look up to see not one, but dual-opening moonroofs. Multi-tasking? Quest makes you a hero. Whether seating 7 or filling with gardening supplies, you've never flipped and folded seats so easily. With a unique third row that folds forward instead of stowing in the rear, you can load up on spring blooms without stopping to drop off the groceries. It's your life Quest has in mind.



SCAN THIS QR CODE WITH
YOUR SMARTPHONE AND SEE
VIDEOS OF QUEST IN ACTION.



Permanent rear storage well – The cargo well behind the rear seats is always open for business, thanks to third-row seats that fold forward.

Easy up, easy down – Push the release button and the third-row seats fold right down. The power-up feature brings them back into place at the push of a button.

A second row you never have to remove – The second row folds flat, which means no more wrestling with seats.

Power-down rear windows – Fresh air for all. In Quest, your second-row passengers have their own power window.

Where to put the long legs? – With Quest's sliding second row, you can create more leg room where you need it, in the second or third row.

Quick Comfort heated front seats – Get to cozy quicker. Key areas of the body are heated in sequence for warming that's ASAP.

Comfort seating design – Shaped and padded especially for improved posture support and comfort. Designed with your next road trip in mind.



Third-row seat down – Up to 75 cu. ft. of cargo room.¹ And thanks to the clever no-stow, forward-folding third row, you can pack some gear in the permanent rear storage well in the back.



Second- and third-row seats down – Just the pair of you cruising the flea market. What will you bring home? With up to 119.8 cu. ft. to fill, no telling.² And you won't even have to remove the second row.

¹75 cu. ft. on S, SV and SL models without Bose® audio system. 70.3 cu. ft. on SL and LE models with Bose® audio system. ²119.8 cu. ft. on S, SV and SL models without Bose® audio system. 115.1 cu. ft. on SL and LE models with Bose® audio system.

QUEST DOES CARGO SMARTER.

Sometimes the simplest innovation is also the most helpful. In Quest, not only does the second row fold flat, forward, and out of the way, so does the third. So unlike other minivans, instead of stowing seats, the cargo well behind the third row is a permanent place to put whatever you like, eliminating the need to ever empty it out.



All seats up – 7 on board and you still have room for gear. The permanent storage well has two separate lids. You can keep a flat cargo floor on one side, and leave the other lid open to carry taller things.



All seats down – Go full cargo mode, while Quest's practical and permanent rear storage well is always at the ready.



Any way you look at it, Quest flips and folds like no other minivan.

Power second-row windows
Open up to let fresh air in, or to just wave goodbye.

Conversation mirror
Don't miss a thing. See who's behaving, or not, in the rows behind.

BIG LIFE. NEVER SIMPLER.

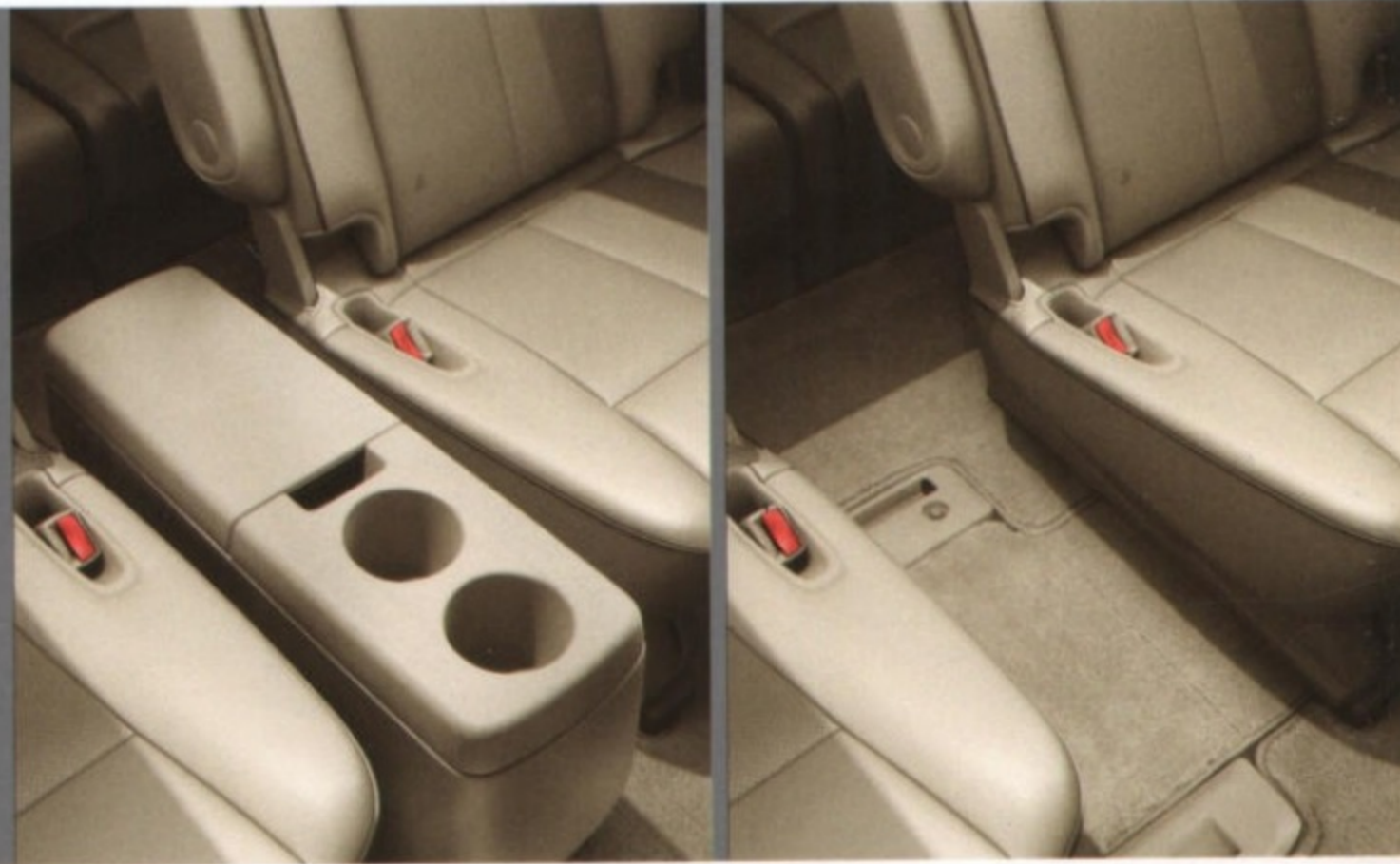
Go ahead and embrace the chaos. Quest makes it seem effortless, even fun. From an easier way to get everyone inside to a better way to wave goodbye, you'll see innovative design at work for you – everywhere you look.

Power rear liftgate
This available feature is the next best thing to your own doorman. Just push a button on your keyless remote, the liftgate or on the dash.



Nissan Intelligent Key® and Push Button Ignition – A system so smart, you can unlock the doors, open the rear liftgate and start the engine, all without taking the key out of your pocket or purse.

Removable 2nd-row console – Your choice. Cup holders for the rear and a place to stash small items. Or remove this handy console to create some walk-around space.



Low step-in height
It's easy for anyone to get in a Quest.

One-touch power sliding doors
Hands full? No problem. Quest's one-touch power sliding doors open easily.

TECHNOLOGY CHANGES EVERYTHING.

Hungry? Lost? Bored back there? With high tech and instant entertainment, Quest has you covered. Let the road trip begin.

11" DVD monitor – Our best-in-class 11" 16:9 viewing area DVD monitor keeps them happy for hours and even has inputs for gaming.

Advanced Climate Control System – First in its class. Control your inside climate and clean the air quickly, when you need to. Filter the cabin air or help reduce outside intrusion, and even help reduce bothersome allergens.

Nissan Navigation System – Quest's advanced navigation system gives you the tools to make every trip a snap. Find a new restaurant and even see what *Zagat Survey*[®] has to say. Hear turn-by-turn voice guidance, then get around jams with available real-time traffic reports from XM NavTraffic.[®] Know the weather, the quickest way to the freeway and make it there on time.^{1,2}

iPod[®] connectivity – Your music comes along. An available USB input is ideal for your iPod[®] or playing MP3s off a thumb drive, so you can easily control your playlist on the available navigation display. On Quest S models, you can plug your player into a standard auxiliary audio input.^{3,4}

Bluetooth[®] Hands-free Phone System – A safer way to stay in touch. Now you can make calls using the buttons on the steering wheel and listen via the speakers. You can also store your address books and use voice-activation to make calls by name.⁵

Bose[®] Audio System – An available 13-speaker digital Bose[®] audio system is made just for Quest, designed around the cabin's unique acoustics to enhance its performance. From the driver's seat to the third row, every passenger enjoys the clarity and depth of a live show.



¹Never program while driving. GPS mapping may not be detailed in all areas or reflect current road regulations. ²Required XM Radio, XM NavTraffic and XM NavWeather subscriptions sold separately after trial period. Installation costs, one-time activation fee, other fees and taxes will apply. XM NavTraffic available in select markets. XM Services available only to those at least 18 years of age in the 48 contiguous United States and D.C. Fees and programming subject to change. Subscriptions governed by XM Customer Agreement available at xmradio.com. ©2011 SIRIUS XM Radio Inc. SIRIUS, XM and all related marks and logos are trademarks of SIRIUS XM Radio Inc. and its subsidiaries. ³Driving is serious business and requires your full attention. Do not operate any devices connected to the USB or auxiliary audio input jack while driving. ⁴Always give your full attention to driving. Avoid

operating your iPod[®] in such a way that you can be distracted during vehicle operation. See dealer for details. iPod is a registered trademark of Apple, Inc. All rights reserved. iPod not included. ⁵Availability of specific features is dependent upon the phone's Bluetooth[®] support. Please refer to your phone Owner's Manual for details. Cell phone not included. The Bluetooth word mark and logos are owned by Bluetooth SIG, Inc., and any use of such marks by Nissan is under license. ⁶Zagat Survey is a registered trademark of Zagat Survey, LLC Ltd.



YOU CAN HANDLE THIS.

You're in a Quest, after all. Changing lanes – we've got your back. Maneuvering in tight spaces – no problem. Powerful? Yes. Easy? Of course.

Powerful V6 – How about getting up to highway speed on the on-ramp? Piece of cake. Quest's powerful V6 with 260 horsepower and 240 lb-ft of torque gives you the confidence and the power to get around the way you need to. Then change the filters and fluids regularly and cover 105,000 miles before needing a tune-up.¹

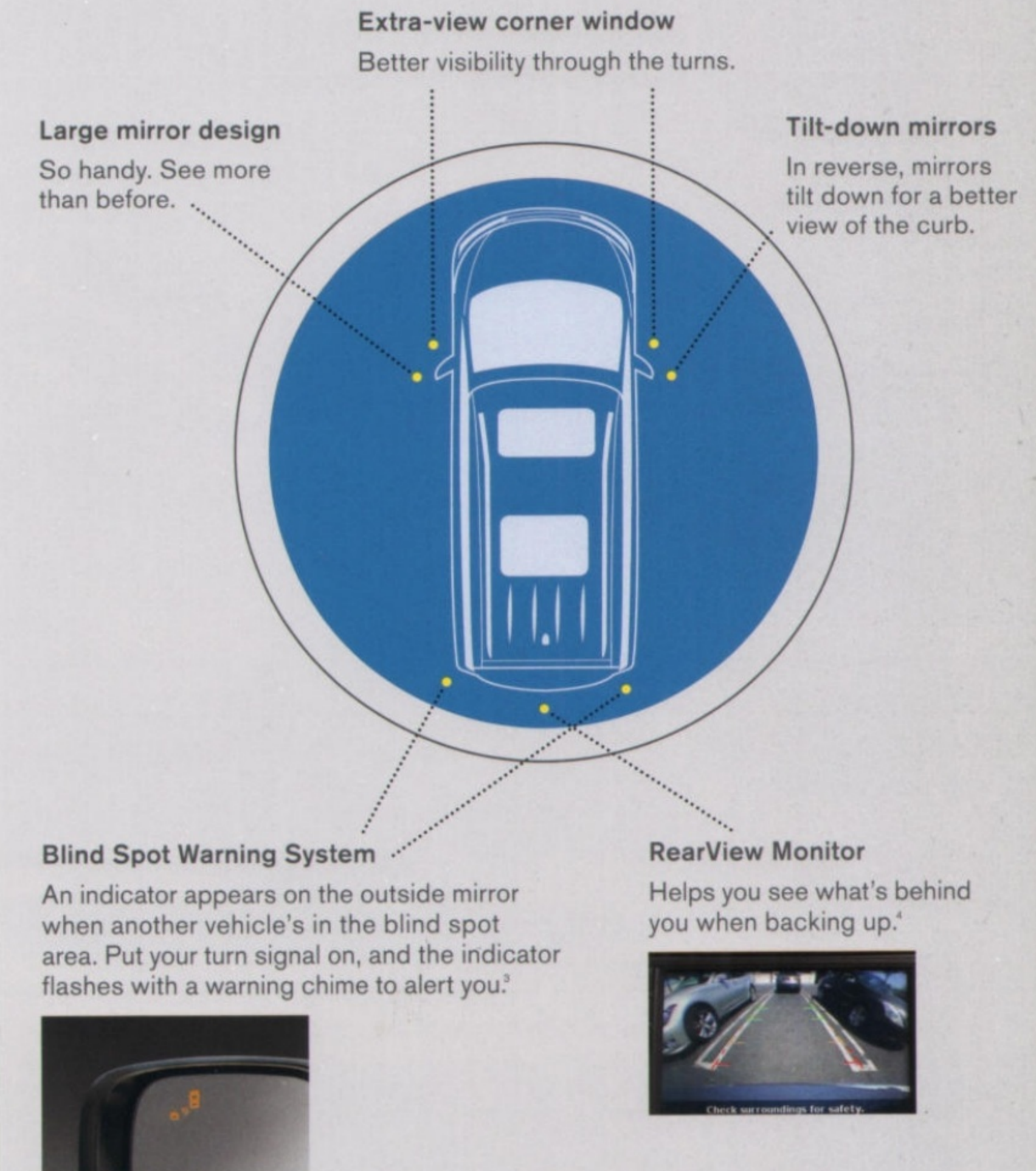
CVT – The smarter way to shift. Quest's virtually "gearless" and smooth CVT transmission keeps you in the sweet spot. When accelerating, the CVT maintains engine rpm – instead of shifting – for a seamless wave of power.

Speed-sensitive steering – So responsive, it gives you the assist you need at different speeds. Steering is easier at low speeds (for parking), then firms up at higher cruising speeds.

Easy Fill Tire Alert – No more taking your chances with that sketchy gauge at the gas station. Just fill with air until a friendly beep of the horn signals that you've reached the correct pressure.²



IT'S CLEAR TO SEE HOW QUEST ASSISTS.



¹Under normal driving conditions with routine fluid/filter changes. See Owner's Manual for details. ²Vehicle must be on for Easy Fill Tire Alert to operate. ³The Blind Spot Warning System is not a substitute for proper lane change procedures. The system will not prevent contact with other vehicles or accidents due to careless or dangerous driving techniques or detect every vehicle or object around you. ⁴Parking aid/convenience feature. Cannot completely eliminate blind spots or warn of moving objects. May not detect every object. Always check surroundings before moving vehicle. Not a substitute for proper backing procedures. Always turn to check what is behind you before backing up.

SAFETY ALL AROUND.

It's protecting you and your most precious cargo that drives our comprehensive approach to safety.

Six Standard Air Bags – The Nissan Advanced Air Bag System incorporates seat belt sensors and an occupant-classification sensor to inflate the dual-stage supplemental front air bags according to crash severity and seat belt usage. Quest also has front side-impact supplemental air bags built into each front seat so they move with you as you adjust your seat. And two roof-mounted curtain side-impact supplemental air bags help provide head protection for all of the outboard occupants.¹

Active Front-seat Head Restraints – These help reduce the chance of whiplash injuries to you and your front passenger by moving up and forward during certain rear-end collisions.


Vehicle Dynamic Control/Traction Control System – Stay on your steered path with Vehicle Dynamic Control (VDC) that senses understeer or oversteer and compensates accordingly.² Get a grip with Traction Control System (TCS). It senses drive-wheel spin and reduces engine power or applies front brakes to help maintain traction.

Anti-lock Braking System – ABS pumps the brakes faster than you could in sudden-braking situations, to help prevent wheel lockup.

Electronic Brake force Distribution (EBD) – Monitors weight distribution and adjusts rear brake force for more balanced braking.

Brake Assist – Quick! In an emergency, Brake Assist helps boost braking by applying additional braking pressure.

LATCH – The Quest LATCH System (Lower Anchors and Tethers for CHildren) lets you easily secure LATCH-compatible child restraints in the second or third row without using a seat belt or a locking clip.

 **Snug Kids** – Nissan safety engineers have dedicated thousands of hours to evaluating hundreds of child restraints in Nissans. The result: An industry first, The Snug Kids Child Safety Seat Fit Guide. This guide lists child seats that fit the rear seats of Nissan vehicles, as well as offers invaluable tips on correct installation. Look for the latest Fit Guide at NissanUSA.com/SnugKids.

Quest for Safety® Program – Committed to child-seat safety, Nissan launched the award-winning Quest for Safety® program in 1998 to inform caregivers how to ensure proper child seat safety usage.

¹Air bags are only a supplemental restraint system; always wear your seat belt. Even with the occupant-classification sensor, rear-facing child restraints should not be placed in the front-passenger's seat. Also, all children 12 and under should ride in the rear seat properly secured in child restraints, booster seats, or seat belts according to their size. Air bags will only inflate in certain accidents. See your Owner's Manual for more details. Inflated air bags shown for illustration purposes only. Coverage area is not exactly as depicted. Actual air bags deflate after deployment. ²VDC, which should remain on when driving except when freeing the vehicle from mud or snow, cannot prevent accidents due to abrupt steering, carelessness, or dangerous driving techniques. Always drive safely.

SPECIFICATIONS

Engine	S	SV	SL	LE
VQ35DE – 3.5-liter DOHC 24-valve V6 engine ¹				
— Horsepower – 260 hp @ 6,000 rpm				
— Torque – 240 lb-ft @ 4,400 rpm				
Emissions – Tier 2, Bin 5				
Continuously Variable Valve Timing Control System (CVTCS)				
Nissan Direct Ignition System with double-tipped iridium spark plugs				
Electronic drive-by-wire throttle				

Drivetrain	S	SV	SL	LE
Front engine/Front-Wheel Drive				
Xtronic CVT ² (Continuously Variable Transmission)				

Wheel/Tires	S	SV	SL	LE
16" x 6.5" steel wheels with bolt-on wheel covers				
16" x 7" aluminum-alloy wheels				
18" x 7" aluminum-alloy wheels				
P225/65TR16 all-season tires				
P235/55TR18 all-season tires				

Brakes	S	SV	SL	LE
4-wheel vented disc brakes				
Anti-lock Braking System (ABS)				
Electronic Brake force Distribution (EBD)				
Brake Assist				

Suspension/Steering	S	SV	SL	LE
Front: Independent strut suspension				
Rear: Multi-link independent suspension				
Front stabilizer bar				
Vehicle speed-sensitive electric power-assisted rack-and-pinion steering				

Exterior	S	SV	SL	LE
Automatic on/off headlights				
High Intensity Discharge (HID) xenon headlights				
Fog lights				
Dual sliding rear doors				
One-touch power sliding doors				
One-touch power liftgate				
Roof rack side rails	AC	AC		
Roof rack crossbars	AC	AC	AC	AC
Dual opening glass moonroof			M	M
Power outside mirrors				
Power outside mirrors with turn signal indicators				
Heated outside mirrors				
Automatic tilt-in-reverse outside mirrors				

■ Standard
 AC Accessory
 □ Part of DVD Entertainment System Package

Exterior (continued)	S	SV	SL	LE
Front UV-reducing solar glass and rear privacy glass				
Chrome door handles				
Side sill spoilers with chrome accents				

Entertainment	S	SV	SL	LE
AM/FM/in-dash 6-CD audio system				
Premium AM/FM/CD audio system with 4.3" color display				
Digital Bose ³ audio system with AM/FM/CD and 13 speakers			B	
XM ⁴ Satellite Radio ²			B	
9.3 GB Music Box ⁵ hard drive for digital music storage and playback				
DVD Entertainment System with 7.0" color in-dash monitor (8.0" on LE)			D	
Second-row 11.0" WVGA DVD monitor with auto-dimming function			D	
Dual Media Playback capability			D	
Two wireless headsets and remote control			D	
Auxiliary audio/video input jacks			D	
MP3/WMA CD playback capability				
Radio Data System (RDS)				
Speed-sensitive volume control				
Auxiliary audio input jack				
USB connection port for iPod ⁶ interface and other compatible devices				
Illuminated steering wheel-mounted audio controls				
4 Speakers				
6 Speakers				
13 Speakers			B	

Interior	S	SV	SL	LE
Blind Spot Warning System				
RearView Monitor				
Nissan Intelligent Key ⁷ with Push Button Ignition				
Remote keyless entry with remote front windows down				
Nissan Hard Drive Navigation System with 8.0" color touch-screen monitor and voice recognition				
XM NavTraffic ⁸ and XM NavWeather ⁹				
Zagat Survey ¹⁰ restaurant reviews				
Bluetooth ¹¹ Hands-free Phone System				
HomeLink Universal Transceiver				
Auto-dimming inside rearview mirror (SL with digital compass)				
Air conditioning				
Tri-zone Automatic Temperature Control (ATC)				
Advanced Climate Control System				

B Part of Bose Audio System Package
 M Part of Dual Opening Glass Moonroof Package

Interior (continued)	S	SV	SL	LE
In-cabin charcoal microfilter				
Polyphenol microfilter				
Second- and third-row air conditioning/heater vents with second-row controls				
Power door locks with auto-locking feature				
Power front windows with driver's one-touch auto-up/down				
Power front windows with one-touch auto-up/down				
Power second-row side windows				
Second- and third-row manual side sunshades				
Tilt and telescoping steering column				
Cruise control with illuminated steering-wheel-mounted switches				
Variable intermittent speed-sensitive windshield wipers and rear wiper				
Dual front map lights, dual second- and dual third-row reading lights				
Dual illuminated visor vanity mirrors with extenders				
Conversation mirror				
Sunglasses storage				
Mood lighting				
First- and second-row height-adjustable seat belts				
Two 12-volt DC power outlets				
120-volt AC power outlet			D	
Retained accessory power and battery saver				
First-row center console with cup holders				
Removable second-row center console with cup holders				
First- and third-row seatback grocery bag hooks				
Passenger seatback pocket				
Driver seatback pocket				
Permanent rear storage well				

Seating/Appointments	S	SV	SL	LE
6-way manual driver's seat with center armrest				
8-way power driver's seat with center armrest				
4-way power front-passenger's seat				
Driver's seat power adjustable lumbar support				
Driver's memory seat system (two presets, remote-activated)				
Quick Comfort heated front seats				
Second-row captain's chairs (sliding and reclining) with third-row easy-entry feature				
Fold-flat second-row captain's chairs				
60/40 Split fold-flat third-row bench seat				
Quick Release third-row folding seatbacks				
Power-return third-row seat				
Cloth seat trim				
Leather-appointed seats				
Leather-wrapped steering wheel				
Leather-wrapped shift knob				
Wood-tone trim				

Safety/Security	S	SV	SL	LE
Nissan Advanced Air Bag System with dual-stage supplemental front air bags, seat belt sensors and occupant-classification sensor				
Driver and front-passenger seat-mounted side-impact supplemental air bags				
Roof-mounted curtain side-impact supplemental air bags for first-, second- and third-row out-board occupant head protection				
3-point ALR/ELR passenger seat belt system (ELR for driver)				
Front seat belts with pre-tensioners and load limiters				
Front-seat Active Head Restraints and height-adjustable head restraints for all positions				
LATCH System (Lower Anchors and Tethers for CHildren)				
Child-safety sliding rear door locks				
Zone Body construction with front and rear crumple zones and hood-buckling creases				
Energy-absorbing steering column				
High-strength steel side-door guard beams				
Traction Control System (TCS)				
Vehicle Dynamic Control (VDC)				
Tire Pressure Monitoring System (TPMS) with Easy Fill Tire Alert				
Nissan Vehicle Immobilizer System				
Vehicle Security System				

PACKAGES

D DVD Entertainment System Package (SL)
 DVD Entertainment System with 7.0" color in-dash monitor
 Second-row 11.0" WVGA DVD monitor with auto-dimming function
 Auxiliary audio/video input jacks
 Dual Media Playback capability
 Two wireless headsets and remote control
 120-volt AC power outlet
 This package replaces standard auxiliary audio input jack.

M Dual Opening Glass Moonroof Package (SL, LE)
 This package requires DVD Entertainment System Package on SL models.

B Bose Audio System Package (SL)
 Digital Bose³ audio system with AM/FM/CD and 13 speakers
 XM⁴ Satellite Radio²
 This package requires Dual Opening Glass Moonroof Package and DVD Entertainment System Package.

¹Use regular unleaded fuel with 87 octane. For maximum power, use premium fuel. ²Required XM Radio, XM NavTraffic and XM NavWeather subscriptions sold separately after trial period. Installation costs, one-time activation fee, other fees and taxes will apply. XM NavTraffic available in select markets. XM Services available only to those at least 18 years of age in the 48 contiguous United States and D.C. Fees and programming subject to change. Subscriptions governed by XM Customer Agreement available at xmradio.com. ©2010 SIRIUS XM Radio Inc. SIRIUS, XM and all related marks and logos are trademarks of SIRIUS XM Radio Inc. and its subsidiaries. ³Bose is a registered trademark of The Bose Corporation. ⁴The Bluetooth word mark and logos are owned by Bluetooth SIG, Inc., and any use of such marks by Nissan is under license.

All illustrations, photographs and specifications in this publication are based on the latest product information available at the time of printing. Some vehicles shown with optional equipment. See the actual vehicle for complete accuracy. Availability and delivery times for particular models or equipment may vary. Nissan North America, Inc. reserves the right to make changes at any time, without prior notice, in prices, colors, materials, equipment, specifications, and models and to discontinue models or equipment. Specifications, options and accessories may differ in Hawaii, U.S. territories and other countries. For additional information on availability, options or accessories, see your Nissan dealer.

DIMENSIONS/CAPACITIES

Exterior Dimensions - Inches

Wheelbase	118.1
Overall length	200.8
Overall width	77.6
Overall height	71.5/73.0 with roof rack
Track width (front/rear)	
16" Wheels	68.1/68.1
18" Wheels	67.7/67.7
Step-in height	
16" Wheels	15.7
18" Wheels	16.1

Interior Dimensions - Inches

Front/second row/third row

Head room	42.1/41.6/40.0 without moonroof 40.9/39.9/38.0 with moonroof
Leg room	43.8/36.7/40.5
Hip room	57.3/66.0/49.6
Shoulder room	64.5/63.2/61.2

Capacities

Interior passenger volume (cu. ft.)	177.8 without moonroof 170.9 with moonroof
Interior volume index (cu. ft.)	214.8 without moonroof
Cargo volume (cu. ft.)	
Permanent rear storage well (S, SV, SL)	11.4
Permanent rear storage well with Bose® audio system (SL, LE)	6.7
All seats in user positions	25.7
Second row upright, third row folded flat	63.6
Second row folded, third row folded flat	108.4
Fuel tank (gals.)	20.0

Curb Weights - Lbs.

	S	SV	SL	LE
Xtronic CVT*	4,367	4,389	4,480	4,548

2011 EPA Fuel Consumption Estimates - City/Hwy

	S	SV	SL	LE
Xtronic CVT*	19/24	19/24	19/24	19/24

*Actual mileage may vary with driving conditions - use for comparison only.

Buying and owning a Nissan is like driving one: quick, convenient, confidence-inspiring.



Nissan Motor Acceptance Corporation. Whether you're buying or leasing, you'll find attractive rates and flexible terms to make your purchase more accessible.

New Vehicle Limited Warranties. Protection for your new Nissan includes 3-year/36,000-mile "bumper to bumper" basic coverage and 5-year/60,000-mile powertrain coverage.

Security+Plus.* For additional peace of mind, a variety of extended service plans lets you tailor the coverage to your driving habits.

Maintenance+Plus.* This extended plan ensures your Nissan will receive up to 17 different services and over 33 different inspection items at each visit, using the most up-to-date diagnostic equipment available.

Genuine Nissan Parts. When it comes time for service, any necessary replacement parts will be made using Genuine Nissan new or remanufactured parts, or Nissan-approved parts. And they're the only parts to carry Nissan's factory-backed limited warranty.

Nissan's philosophy toward the environment, "Seeking a symbiosis of people, vehicles and nature," describes our ideal for a sustainable mobile society, now and in the future. We launched the Nissan Green Program with specific objectives to realize this goal, and we are pursuing it energetically. For more information, log on to NissanUSA.com/green



THERE'S A QUEST FOR YOU.



S

- 3.5-liter V6 engine with Xtronic CVT* (Continuously Variable Transmission)
- Anti-lock Braking System (ABS)
- Vehicle Dynamic Control (VDC) and Traction Control System (TCS)
- Tire Pressure Monitoring System (TPMS) with Easy Fill Tire Alert
- Nissan Intelligent Key® with Push Button Ignition
- AM/FM/in-dash 6-CD audio system with auxiliary audio input jack
- Power second-row side windows
- 7-passenger seating capacity and permanent rear storage (behind third row)
- Fold-flat second-row captain's chairs and fold-flat third-row bench seat
- Wood-tone trim
- Nissan Advanced Air Bag System and 6 standard air bags



SV

Includes S equipment, plus:

- 16" Aluminum-alloy wheels and fog lights
- One-touch power sliding doors
- RearView Monitor and conversation mirror
- Premium AM/FM/CD audio system with 4.3" color display and 6 speakers
- Bluetooth® Hands-free Phone System
- USB connection port for iPod® interface and other compatible devices
- Leather-wrapped steering wheel with illuminated audio controls
- Tri-zone Automatic Temperature Control



SL

Includes SV equipment, plus:

- 18" Aluminum-alloy wheels, roof rack side rails and side sill spoilers
- One-touch power liftgate
- Leather-appointed seats and leather shift knob
- Quick Comfort heated front seats
- 8-way power driver's seat with power lumbar support
- Auto-dimming inside rearview mirror with digital compass
- HomeLink Universal Transceiver



LE

Includes SL equipment, plus:

- Blind Spot Warning System and automatic tilt-in-reverse outside mirrors
- Nissan Hard Drive Navigation System with 8.0" touch-screen monitor and voice recognition
- DVD Entertainment System with second-row 11.0" DVD monitor
- Bose® audio system with 13 speakers and XM® Satellite Radio
- Advanced Climate Control System with polyphenol microfilter
- Driver's memory seat system and 4-way power front-passenger's seat
- Power-return third-row seat

PAINT SELECTIONS



Pearl White QAB

	S	SV	SL	LE
Gray Cloth	■	■		
Gray Leather			■	■
Beige Leather			■	■



Brilliant Silver K23

	S	SV	SL	LE
Gray Cloth	■	■		
Gray Leather			■	■



Twilight Gray FAA

	S	SV	SL	LE
Gray Leather			■	■
Beige Cloth	■	■		
Beige Leather			■	■



Black Amethyst LAE

	S	SV	SL	LE
Gray Leather			■	■
Beige Leather			■	■



Dark Mahogany GAE

	S	SV	SL	LE
Gray Leather			■	■
Beige Leather			■	■



Titanium Beige KAY

	S	SV	SL	LE
Beige Cloth	■	■		
Beige Leather			■	■



Platinum Graphite K51

	S	SV	SL	LE
Gray Cloth	■	■		
Gray Leather			■	■

FABRIC SELECTIONS

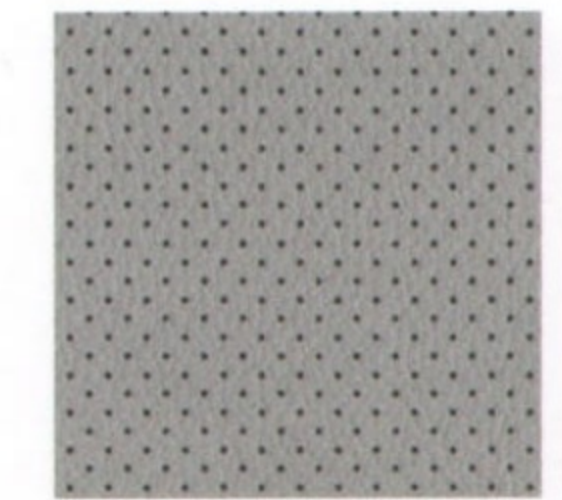
Gray Cloth



Beige Cloth



Gray Leather



Beige Leather



Please see the actual colors at your local Nissan dealer.

■ Standard

Vehicle Configuration

Time to narrow it down to just one Quest. It might be easier than you think with this selection guide. Or, if you want an interactive experience, go to NissanUSA.com and find great ways to configure your Quest.

ACCESSORIZE.

Every Genuine Nissan Accessory is:

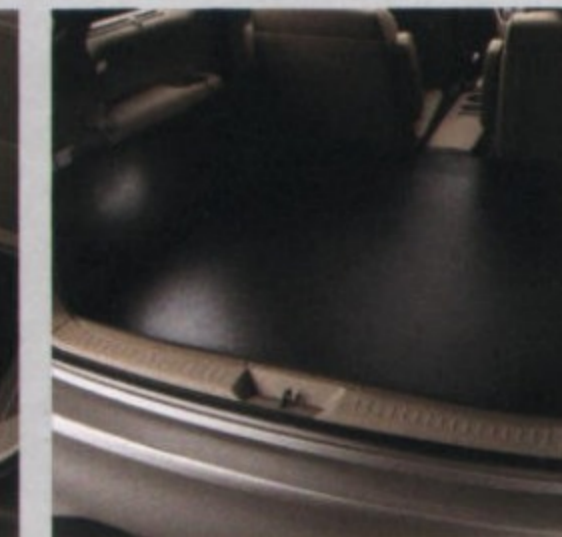
- Custom-fit, custom-designed and durability-tested.
- Backed by Nissan's 3-year/36,000-mile limited warranty.
- Easy to finance with vehicle purchase, for just a few dollars a month.

See your Nissan dealer for details, or go to NissanUSA.com

Cargo Organizer
(with Sliding Tray)



Full-length Vinyl
Cargo Area Protector



Illuminated Kick Plates



Rear Bumper Protector



Roof Rail Crossbars





10 REASONS TO MAKE A QUEST[®] YOUR OWN.

One-touch power sliding doors help you out when your hands are full

Goes from carpool to cargo easier than any other minivan

Permanent rear storage, thanks to a unique, no-stow third row

Second-row seats you never have to remove

Standard Nissan Intelligent Key[®] with Push Button Ignition

Nissan Navigation System with real-time traffic and weather updates^{1,2}

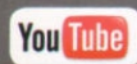
The Blind Spot Warning System³ gives a heads-up for easier lane changes

Best-in-class 11" 16:9 DVD monitor means big-screen fun

The Nissan Advanced Air Bag System, with six standard air bags⁴

An Easy Fill Tire Alert that beeps the horn when you've reached the right pressure⁵

See Quest on YouTube. Become a fan on Facebook.



Find us on
Facebook

visit www.NissanUSA.com/quest



SHIFT the way you move

¹Never program while driving. GPS mapping may not be detailed in all areas or reflect current road regulations. ²Required XM Radio, XM NavTraffic and XM NavWeather subscriptions sold separately after trial period. Installation costs, one-time activation fee, other fees and taxes will apply. XM NavTraffic available in select markets. XM Services available only to those at least 18 years of age in the 48 contiguous United States and D.C. Fees and programming subject to change. Subscriptions governed by XM Customer Agreement available at xmradio.com. ©2011 SIRIUS XM Radio Inc. SIRIUS, XM and all related marks and logos are trademarks of SIRIUS XM Radio Inc. and its subsidiaries. ³The Blind Spot Warning System is not a substitute for proper lane change procedures. The system will not prevent contact with other vehicles or accidents due to careless or dangerous driving techniques or detect every vehicle or object around you. ⁴Air bags are only a supplemental restraint system; always wear your seat belt. Even with the occupant-classification sensor, rear-facing child restraints should not be placed in the front-passenger's seat. Also, all children 12 and under should ride in the rear seat properly secured in child restraints, booster seats, or seat belts according to their size. Air bags will only inflate in certain accidents. See your Owner's Manual for more details. ⁵Vehicle must be on for Easy Fill Tire Alert to operate.

PRINTED IN USA.